

Contents

General Information.....	2
Hardware introduction.....	2
Accessories.....	3
Safety information.....	3
Application.....	4
PC environment.....	4
5.1 home theater system.....	4
PC stereo speaker.....	4
DVD player.....	4
Audio player.....	4
Operation.....	5
Power connection.....	5
Single cable.....	5
Placement and Antenna angle.....	5
Turning on the transceiver/receiver.....	6
Pairing.....	6
Turning on the amplifier.....	7
Volume control.....	7
Connection & Disconnection.....	7
Playing music or video.....	8
Specifications.....	49

General Information

Hardware introduction



Transceiver

1. Antenna
2. Power Button
3. Pairing Button
4. Transceiver
5. LED
6. RCA connector
7. DC jack

Receiver



1. Antenna
2. Power Button
3. Pairing Button
4. Receiver
5. LED
6. RCA connector
7. DC jack

Amplifier



1. Amplifier
2. Input: RCA connector
3. Volume control
4. Power Switch
5. DC jack
6. DC 5V Output
7. Output: Speaker connector

Accessories



Aluminum Cradle x 2



RCA Hi-Fi Plug Cable x 1



RCA Speaker cable x 1



RCA Hi-Fi Jack Cable x 1



RCA cable x 1



5V AC Adapter x 1



Power Adapter for BT460 X 1

Safety information

Don't use this system in Emergency system, Hospital, Airplane and Outdoor.

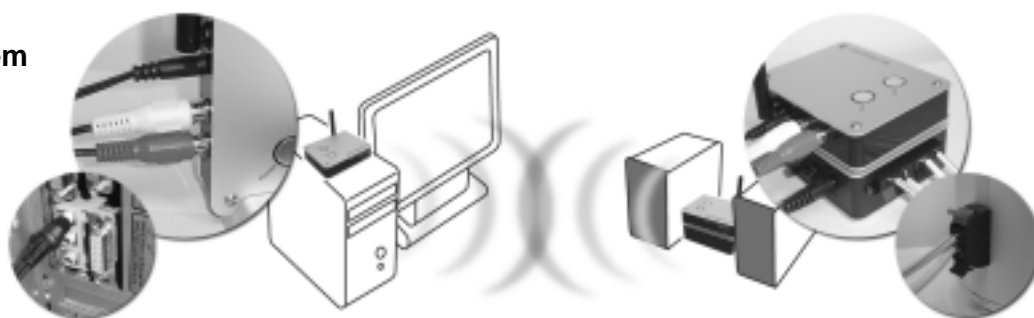
Please place this system on a flat, stable and hard surface.

Keep away from the strong radio system to make sure the single quality.

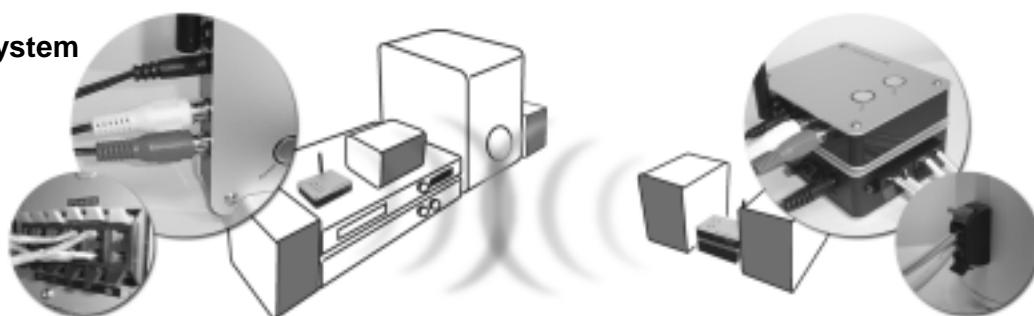
Don't put receiver on the speaker to reduce the interference.

Application

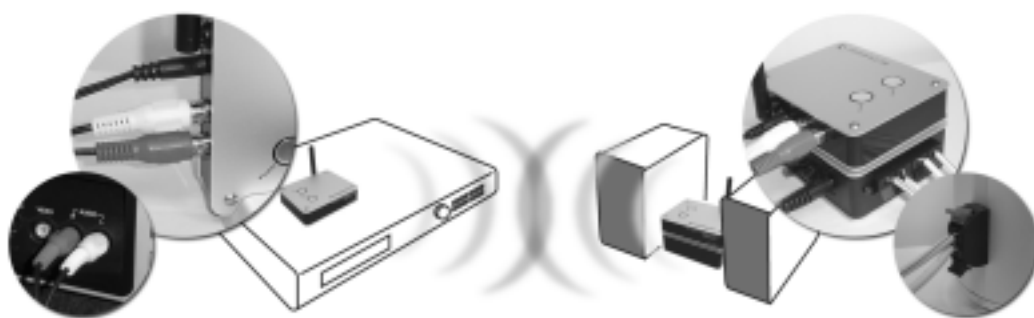
PC stereo system



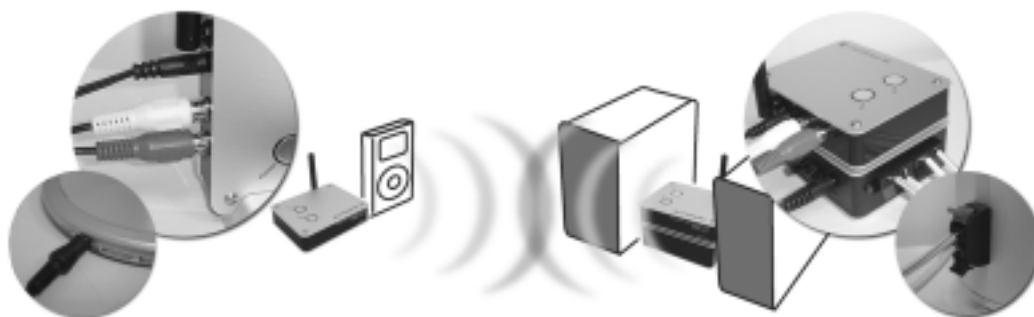
Home theater system



DVD player



Audio player



English

Operation

Power connection



Before connecting the AC Adapter to the outlet, please ensure local power line voltage. Plug the AC adapter to the outlet then connect the AC adapter to the DC jack on the rear side of the Transceiver / Receiver / Amplifier.

Single cable



Connect the RCA cable to the RCA connector on the rear side of Transceiver / Receiver.
For the Transceiver, the other end to an available DVD player, Home theater system or PC.....
For the Receiver, the other end to an available Amplifier RCA connector.

Placement and Antenna angle

Please see figure to adjust the antenna angle.



Turning on the transceiver / receiver

Press the power button on transceiver/receiver. The LED indicator will light blue to indicate that Transceiver/Receiver is working.



Pairing

Please follow the below instruction to pair the Transceiver and receiver:

1. Press and hold the pairing button on Transceiver or receiver for 2-3sec until the LED starts to flash.
2. Release the pairing button after the LED is flashing, the status indicates the transceiver or receiver is in pairing mode.
3. After 2-3 sec the LED stops flash light. That means the pairing process is finished. The transceiver and receiver will return to normal status.



Turning on the amplifier

The blue LED will start to lighten as soon as the power switch in back of amplifier is turned on.



p.s. Please twist (or twiddle) the knob to the low volume before turn on the power.

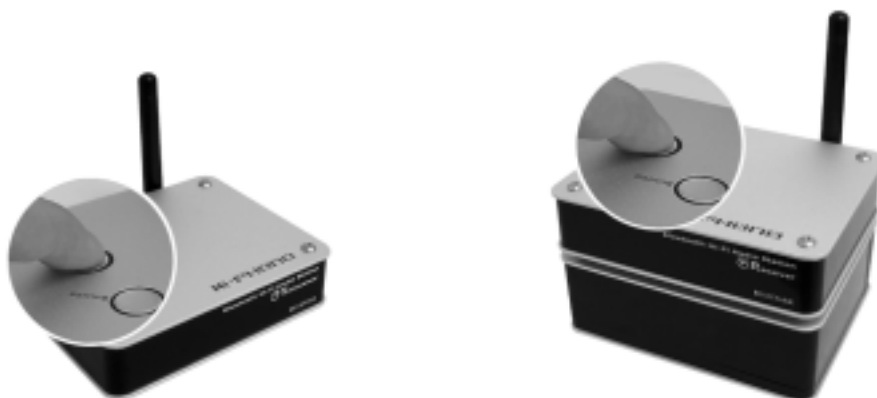
Volume control

The volume control switch is in back of amplifier. Please twist (or twiddle) the knob to the low volume at first. Then adjust the sound to the comfortable level after play the music or video.



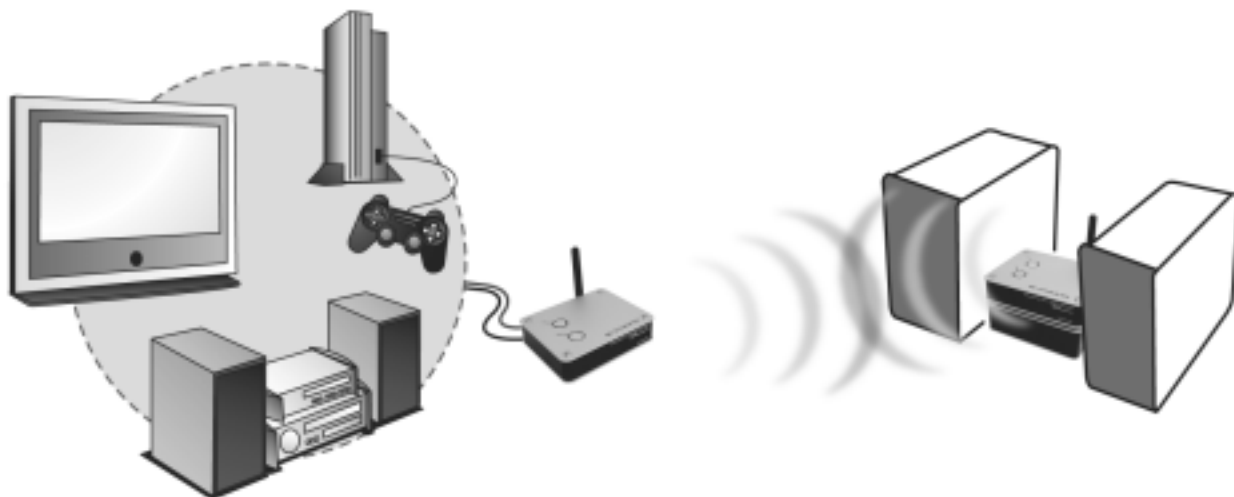
Connection & Disconnection

You can press the pairing button of transceiver to stop the music or sound. To return the music and sound, please press the pairing button again.



Playing the music or video

Before playing the music, please ensure the transceiver has already been paired with receiver



Turn on the Transceiver, receiver and amplifier. Play the music or video. And then you will hear the music or sound from speaker.

Transceiver and receiver

LED introduction

	Blue	Interval
Standby/disconnect	on	
Connection	once	3sec
Pairing	once	0.5sec

Button and switch introduction

	Function	Process
Pairing	Pairing	Press the Pairing button and keep it pressed for about 3 sec until the blue and red indicators flash alternately
	Interrupt Radio Signal	Press once to stop signal. Press once again to return it.
Power Switch	Power on	Power turn on
	Power off	Power turn off

Federal Communications Commission (FCC) Statement

15.21

You are cautioned that changes or modifications not expressly approved by the part responsible for compliance could void the user's authority to operate the equipment.

15.105(b)

This equipment has been tested and found to comply with the limits for a Class B digital device, pursuant to part 15 of the FCC rules. These limits are designed to provide reasonable protection against harmful interference in a residential installation. This equipment generates, uses and can radiate radio frequency energy and, if not installed and used in accordance with the instructions, may cause harmful interference to radio communications. However, there is no guarantee that interference will not occur in a particular installation. If this equipment does cause harmful interference to radio or television reception, which can be determined by turning the equipment off and on, the user is encouraged to try to correct the interference by one or more of the following measures:

- Reorient or relocate the receiving antenna.
- Increase the separation between the equipment and receiver.
- Connect the equipment into an outlet on a circuit different from that to which the receiver is connected.
- Consult the dealer or an experienced radio/TV technician for help.

You are cautioned that changes or modifications not expressly approved by the party responsible for compliance could void your authority to operate the equipment.