

Remote Keyless Entry
(BONTEC-003)

FCC NOTICE

THIS DEVICE COMPLIES WITH PART 15 OF THE FCC RULES.
OPERATION IS SUBJECT TO THE FOLLOWING TWO CONDITION:
(1) THIS DEVICE MAY NOT CAUSE HARMFUL INTERFERENCE, AND
(2) THIS DEVICE MUST ACCEPT ANY INTERFERENCE RECEIVED,
INCLUDING INTERFERENCE THAT MAY CAUSE UNDERSIRED OPERATION.

This equipment has been tested and found to comply with the limits for a Class B digital device, pursuant to part 15 of the FCC Rules. These limits are designed to provide reasonable protection against harmful interference in a residential installation. This equipment generates, uses and can radiate radio frequency energy and, if not installed and used in accordance with the instructions, may cause harmful interference to radio

communication. However, there is no guarantee that interference will not occur in a particular installation. If this equipment does cause harmful interference to radio or television reception, which can be determined by turning the equipment off and on, the user is encouraged to try to correct the interference by one or more of the following measures :

- Reorient or relocate the receiving antenna.
- Increase the separation between the equipment and receiver.
- Connect the equipment into an outlet on a circuit different from that to which the receiver is connected.
- Consult the dealer or an experienced radio/TV technician for help.

NOTE : The manufacturer is not responsible for any radio or TV interference caused by unauthorized modifications to this equipment. Such modifications could void the user's authority to operate the equipment.

– INDEX –

- Description of transmitter and receiver
- Block diagram from transmitter and receiver
- Circuit diagram from transmitter and receiver

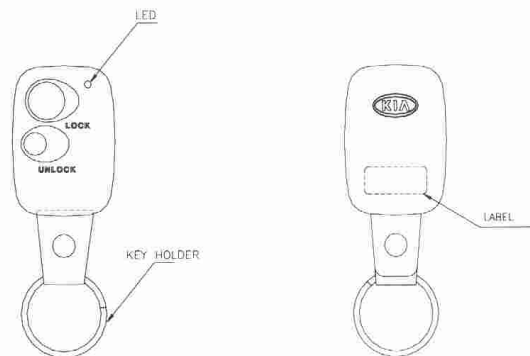
Description of transmitter and receiver

1. PRIMARY FUNTION

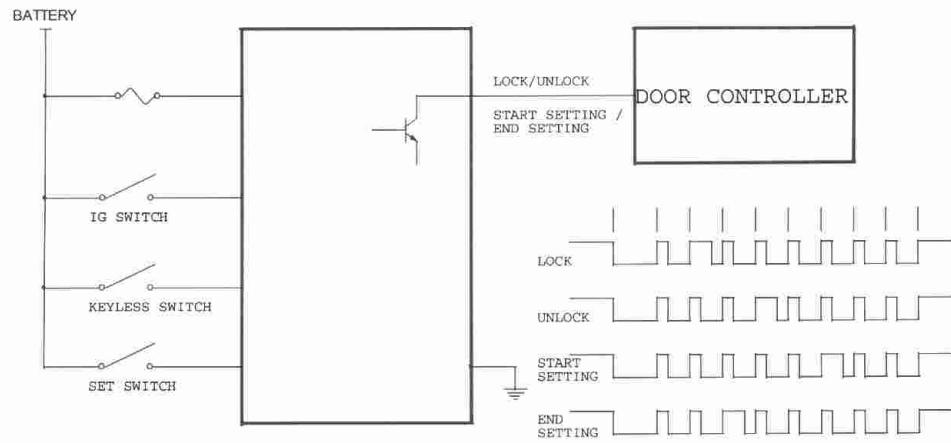
- Remeto door lock/unlock
- LED turn on (When the lock/unlock button is pushed)
- Operating distance : 7~ 10 m

2. ELECTRICAL CHARACTERISTICS

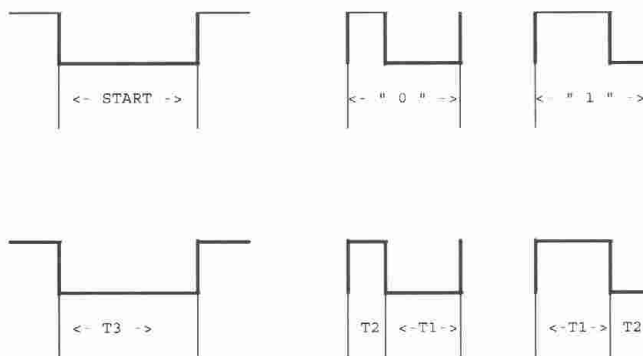
	TRANSMITTER	RECEIVER
Operating voltage	4.5 ~ 6 VDC	10 ~ 16 VDC
Consumption current	Max 20mA	Max 5mA
Operating frequency	315MHz	
Power	10mW under	-
Sensitivity	-	-95dBm(typical)
Operating temperature	-30 ~ +80℃	-30 ~ +80℃
etc	AM modulation	LC superregenerative rx



3. OPERATING DIAGRAM



* DESCRIPTION OF OUTPUT SIGNAL



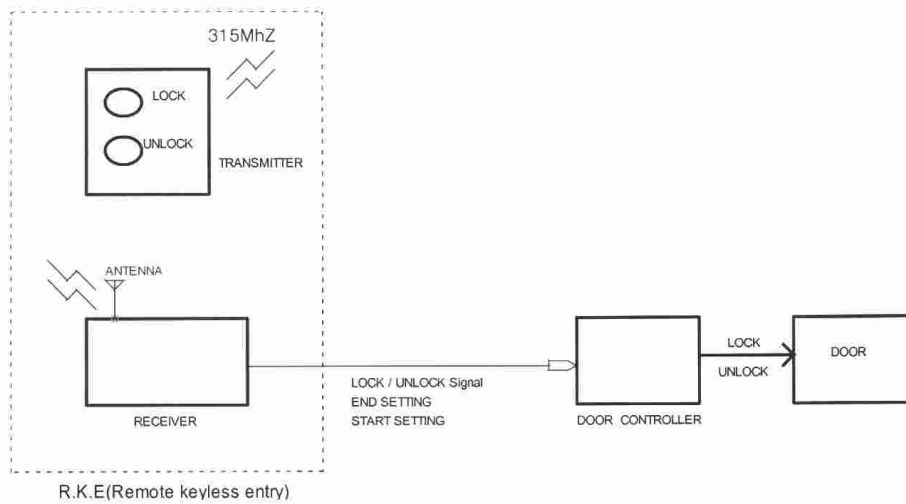
T1 : 24 msec

T2 : 8 msec

T3 : 49 msec

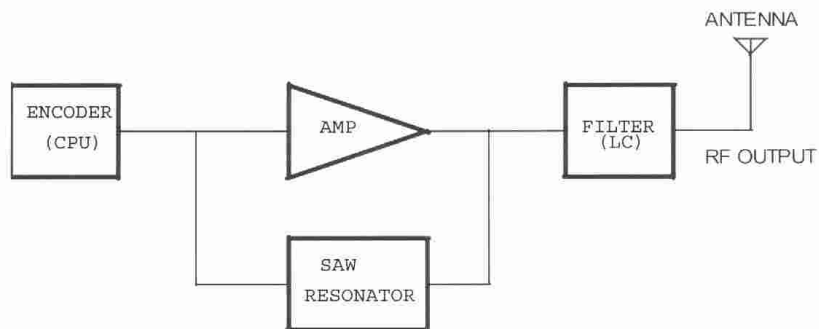
* A cause

BATTERY	IG SW.	SET SW.	KEYLESS SW.	OPERATING MODE	SETTING MODE
	OFF	OFF	OFF	ENABLE	DISABLE
	OFF	OFF	ON	DISABLE	DISABLE
	OFF	ON	OFF	DISABLE	DISABLE
	OFF	ON	ON	DISABLE	DISABLE
	ON	OFF	OFF	DISABLE	DISABLE
	ON	OFF	ON	DISABLE	DISABLE
	ON	ON	OFF	DISABLE	DISABLE
	ON	ON	ON	DISABLE	ENABLE

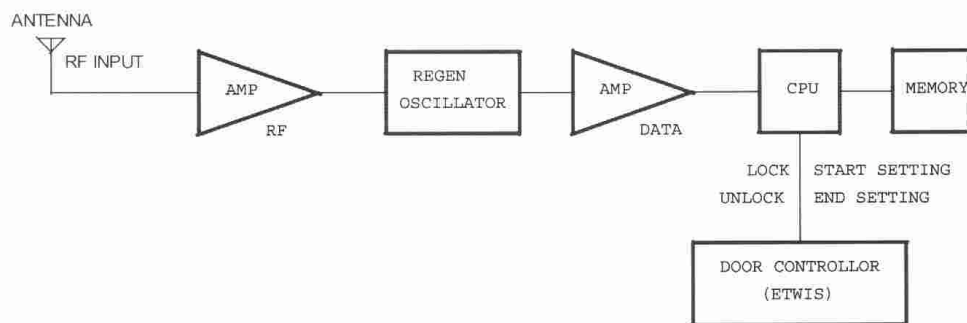


Block diagram from transmitter and receiver

A. TRANSMITTER

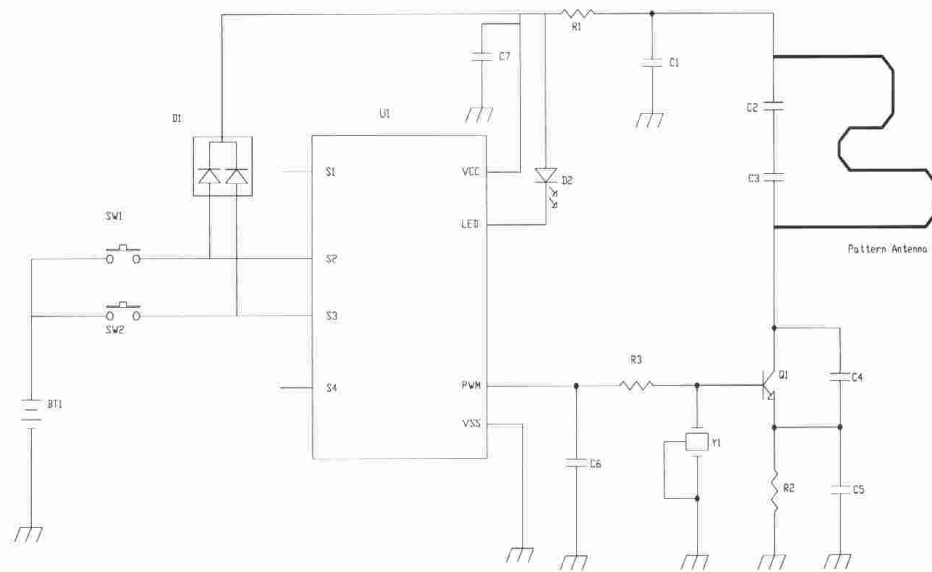


B. RECEIVER



Block diagram from transmitter and receiver

A. TRANSMITTER



B. RECEIVER

