

Remote Keyless Entry  
(HM-T003)

Users Manual

HYUNDAI MOBIS Co., Ltd.

#80-9, MABOOK-RI, GUSEONG-EUP, YONGIN-SHI, GYUNGGI, 449-910, KOREA

# - INDEX -

- An outline
- Description of Transmitter
- Block diagram for Transmitter
- Circuit diagram for Transmitter

# An outline of Transmitter

---

## 1. How to use HM-T003

- HM-T003 is Remote Keyless Transmitter
- This unit controll door lock/unlock with wireless.
- This unit consist of Transmitter(HM-T003) & Receiver
- Push button , then door lock. Or Unlock

## 2. Introduction of Transmitter(HM-T003)

- Transmitter has one button
- Button marking are LOCK, UNLOCK
- Transmitter use 3V DC internal battery
- Frequency is 315MHz
- Modulation item is SAW Resonator
- Transmitter use Rolling code algorithm

This device complies with Part 15 of the FCC Rules. Operation is subject to the following two conditions: (1) This device may not cause harmful interference, and (2) this device must accept any interference received, including interference that may cause undesired operation.

The manufacturer is not responsible for any Radio or TV Interference caused by unauthorized modifications to this Equipment. Such modifications could void the user's authority To operate the equipment.

# Description of Transmitter and ETACS

---

## 1. PRIMARY FUNTION

- Remote door lock/unlock
- LED turn on ( When The button is pushed )
- Operating distance :10 m over
- Id input(setting mode)

## 2. ELECTRICAL CHARACTERISTICS

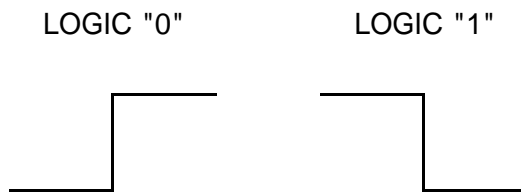
	TRANSMITTER
model name	HM - T003
Operating voltage	3 VDC
Consumption current	Max 15mA
Operating frequency	315MHz
Power	10mW under
Sensitivity	-
Operating temperature	-20 ~ +60

## 1) TRANSMITTER

### A) DATA FRAME

BIT NO	H1~H178	D1~D8	D9~D32	D33~D40	D41~D52	D53~D56
DATA	HEADER	User Code	ID Code	Function Code	Rolling Code	Parity Code
BIT 수	178bit	8bit	24bit	8bit	12bit	4bit

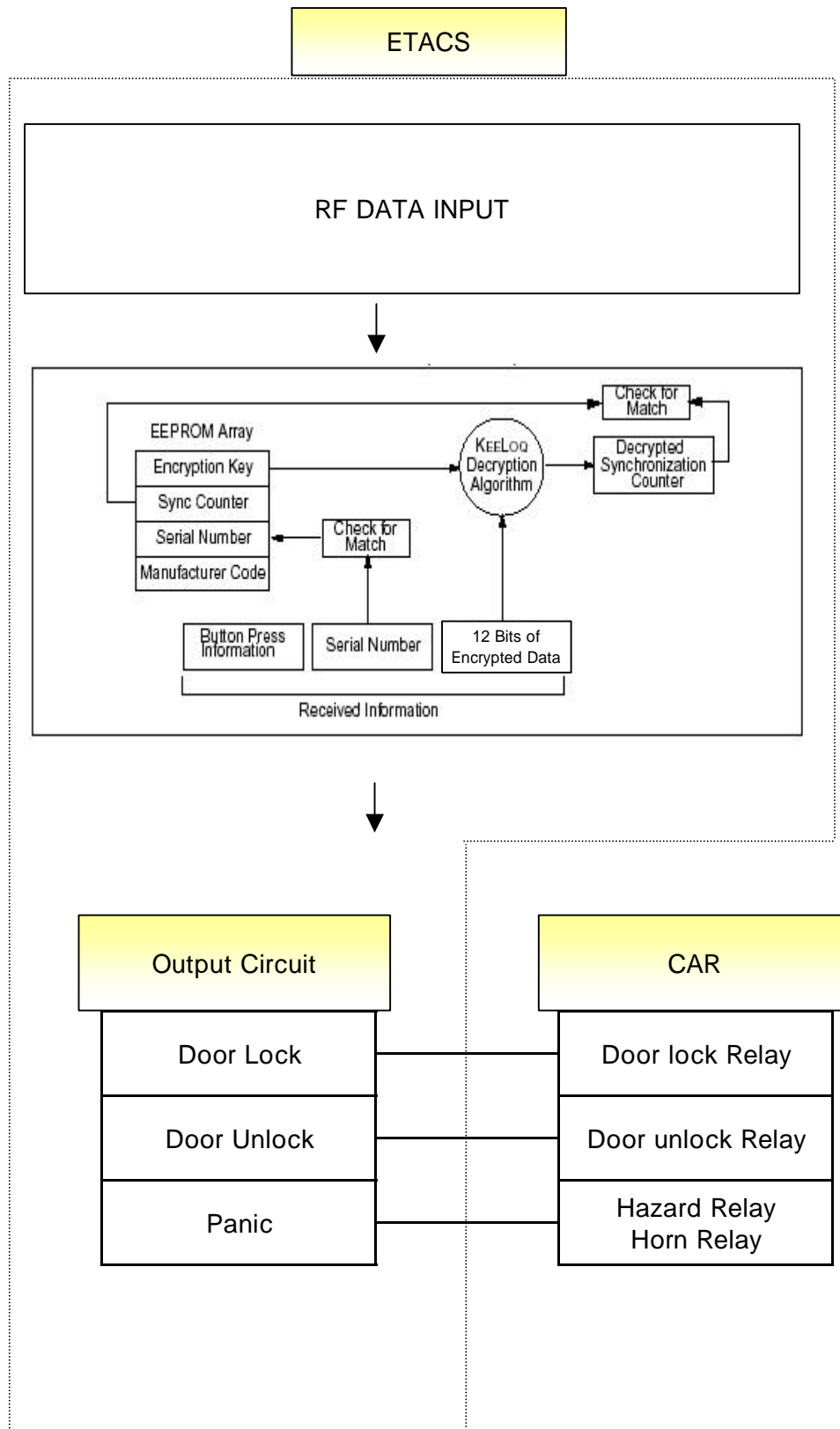
### B) DATA FORMAT



### C) TRANSMISSION SPECIFICATION

- BAUD RATE : 625bps
- CODING METHOD : MANCHESTER
- TRANSMISSION BIT COUNT : 1 FRAME = 234BIT
- TRANSMISSION TIME : 377.4msec

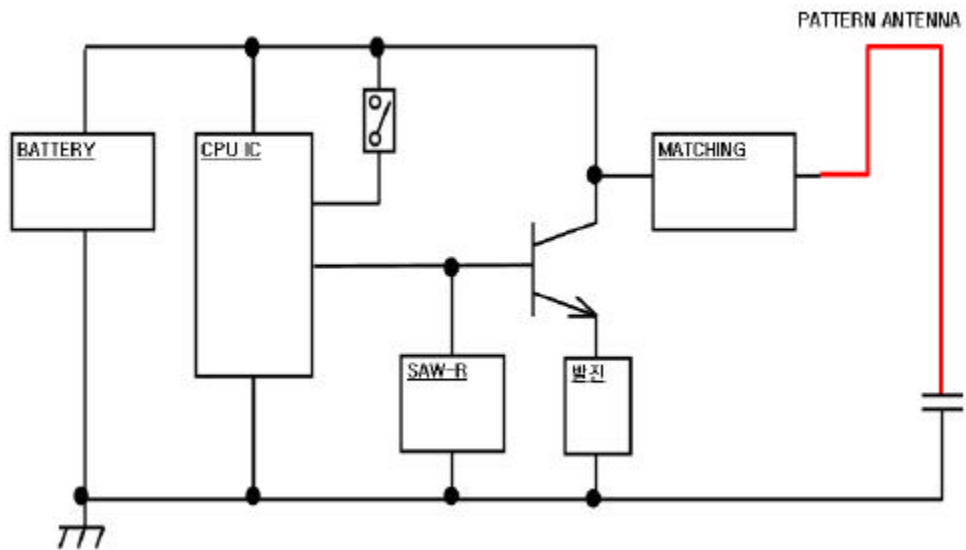
## 2) ETACS



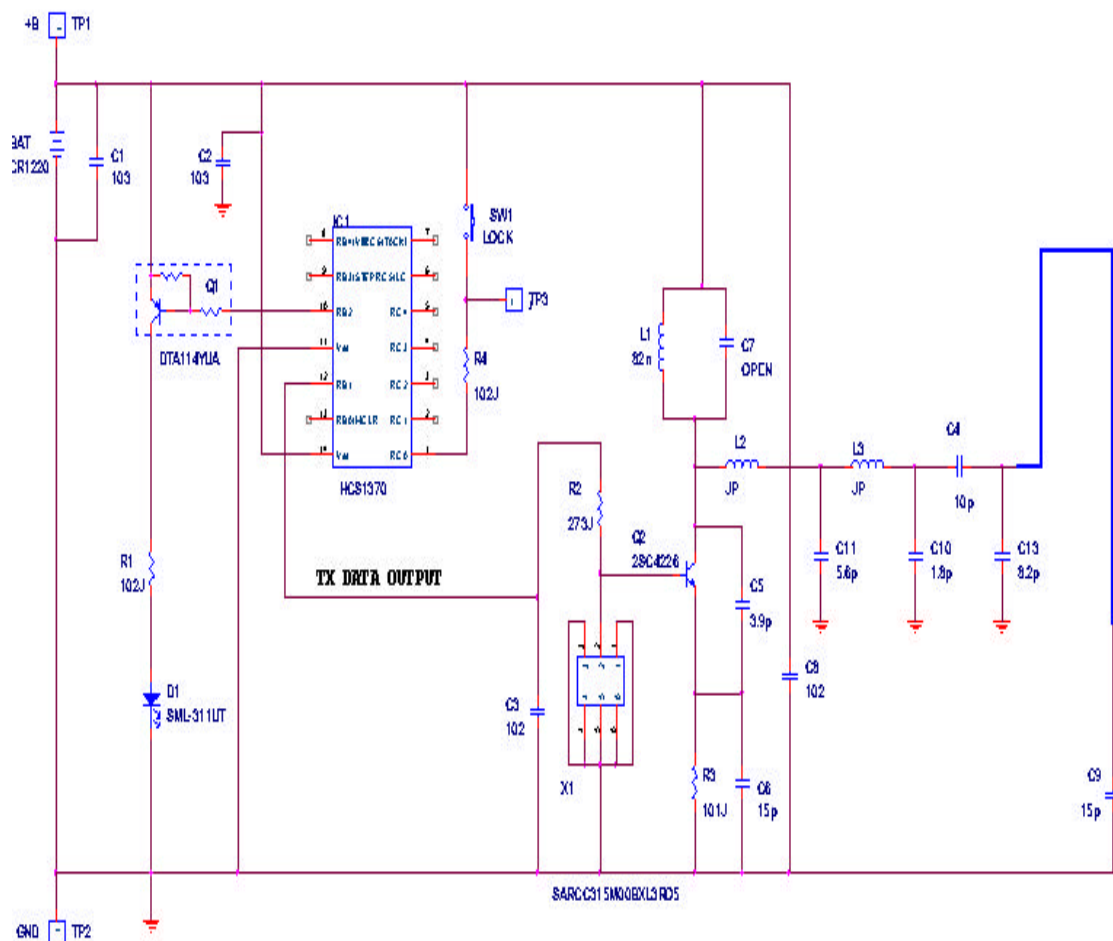
## Block diagram for Transmitter and Receiver

---

### TRANSMITTER(HM-T003)



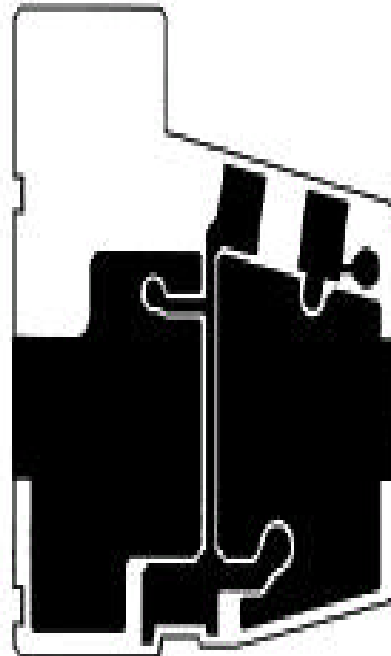
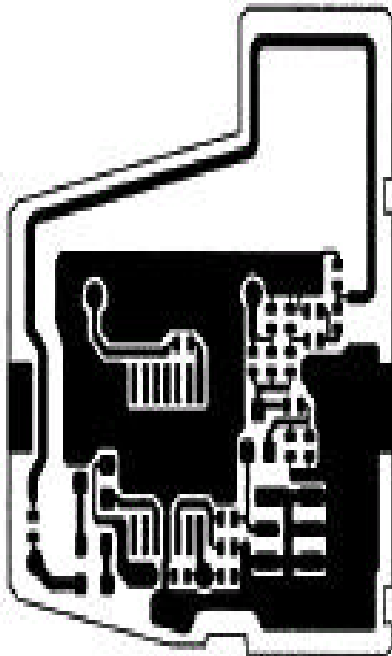
## TRANSMITTER(HM-T003)



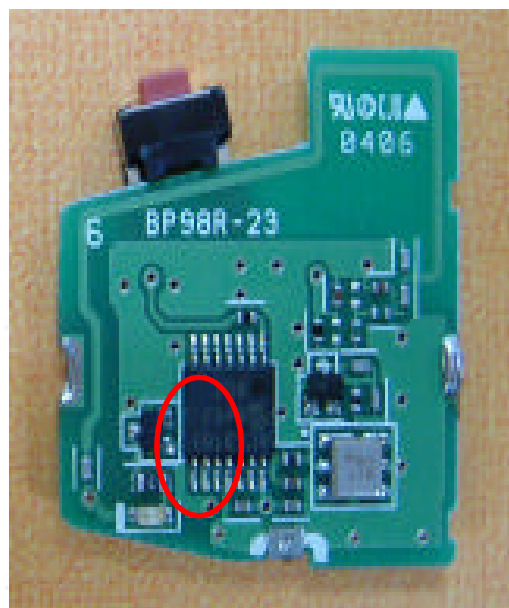
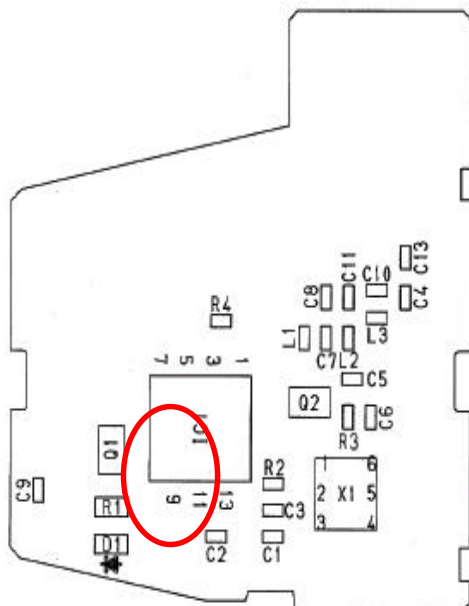


\* PCB PATTERN

Product ; HM-T003



\* Method of continuous transmit



Short #14 Pin of R2/C3 CPU IC