

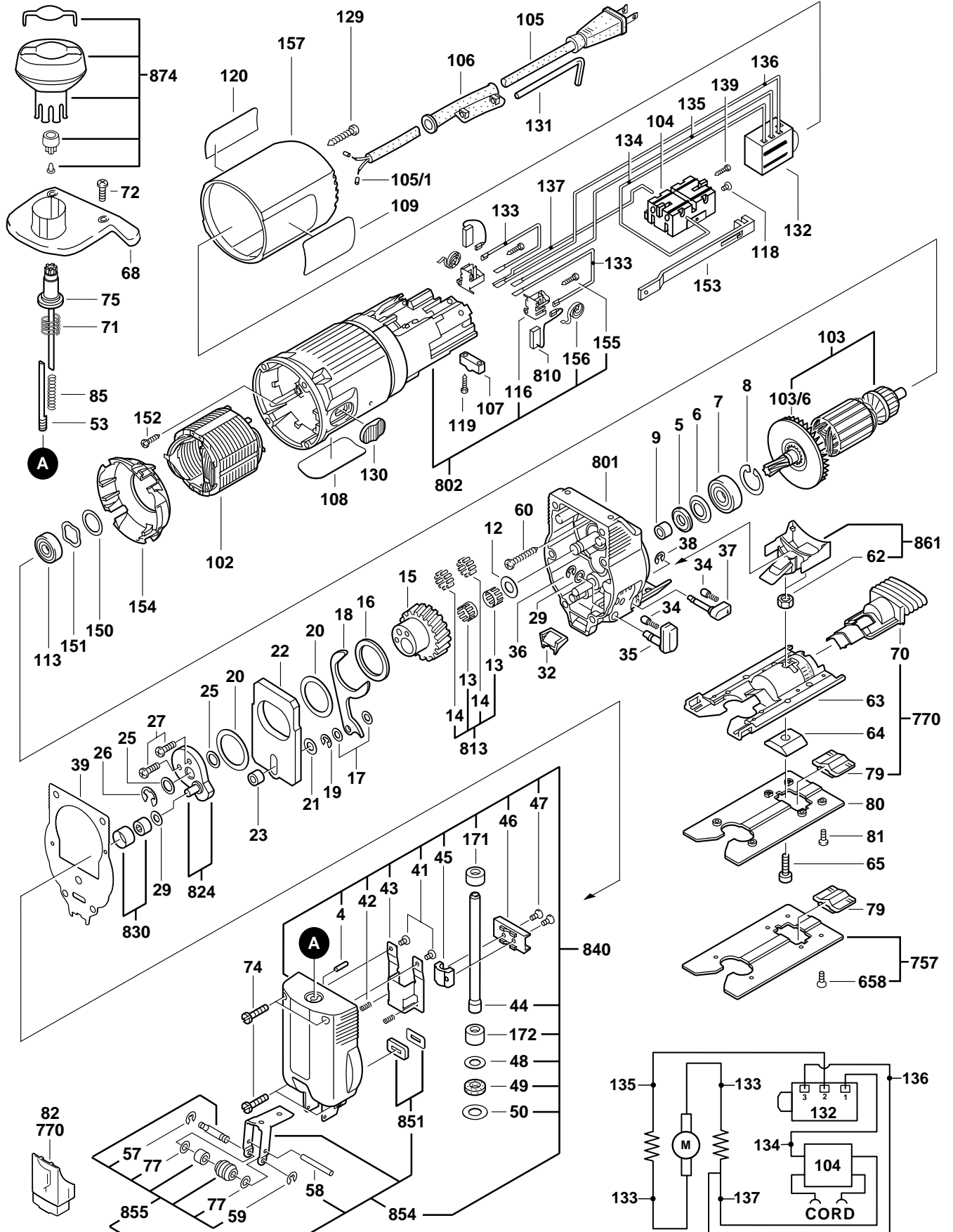
# BOSCH

October 1997  
INDUSTRIAL

## JIGSAW

Model 0601584651

# 1584AVS



# 1584AVS JIGSAW

Pos.	Part Number	Description {Qty}	F/C	Pos.	Part Number	Description {Qty}	F/C
4	1 903 201 042	Needle {2}	66	79	2 601 099 013	Cover	9
5	2 600 108 077	Felt Seal	77	80	2 601 099 029	Plastic Base	88
6	2 600 500 002	Washer	65	81	2 910 001 116	Screw {6}	89
7	2 600 905 021	Ball Bearing	61	82	2 601 320 022	Cover	92
8	2 916 669 008	Retaining Ring	89	85	2 604 610 040	Spring	27
9	2 600 400 008	Bushing	82	102	2 610 909 245	Field 120V	22
12	2 600 101 616	Washer	65	103	2 610 909 242	Armature w/Fan 120V	AW
13	2 600 913 036	Needle Cage {2}	56	103/6	2 610 909 244	Fan	23
14	2 603 201 037	Needle {20}	56	104	2 607 200 093	Switch On/Off	15
15	2 606 320 048	Eccentric Gear	34	105	3 604 460 555	Cord 120V 18/2	11
16	2 600 102 653	Shim 1.0mm	65	105/1	1 900 452 012	Terminal {2}	10
* 17	2 600 100 515	Shim 0.3mm	65	106	2 600 703 028	Strain Relief	11
* 17.1	2 600 100 516	Shim 0.5mm	65	107	2 601 035 001	Cord Clamp	89
18	2 601 923 004	Fork Lever	62	108	2 610 994 118	Nameplate	9
19	2 916 080 907	Circlip	89	109	2 610 994 117	Label "1584AVS"	9
20	2 600 102 652	Shim 0.5mm {2}	65	113	1 900 905 018	Ball Bearing	60
* 21	2 600 100 625	Shim 0.1mm	65	116	2 601 323 021	Brush Holder {2}	25
* 21.1	2 600 100 626	Shim 0.2mm	65	118	2 603 410 001	Screw {4}	89
* 21.2	2 600 100 627	Shim 0.3mm	65	119	2 610 315 386	Screw {2}	89
22	2 601 098 003	Plate	68	120	2 610 906 855	Label "Caution"	9
23	2 600 309 009	Bushing	82	129	2 910 601 321	Screw	89
* 25	2 600 100 575	Shim 0.2mm	65	130	2 602 026 015	Switch Button	9
* 25.1	2 600 100 576	Shim 0.3mm	65	131	1 907 950 006	Allen Wrench 5mm	9
* 25.2	2 600 100 577	Shim 0.5mm	65	132	2 607 230 011	Switch VS	17
26	2 916 080 010	Circlip	89	133	2 604 448 034	Cable 88mm {2}	10
27	2 914 551 176	Screw & Washer {2}	89	134	2 604 448 044	Cable 86mm	10
* 29	2 600 100 568	Shim 0.5mm	65	135	2 604 448 045	Cable 100mm	10
* 29.1	2 600 100 569	Shim 1.0mm	65	136	2 604 448 046	Cable 128mm	10
* 29.2	2 600 100 607	Shim 0.3mm	65	137	2 604 448 040	Cable 125mm	10
32	2 602 305 042	Air Eliminator	9	139	2 910 611 006	Screw	89
34	2 600 590 006	Cap/spring {2}	9	* 150	2 600 101 023	Shim 0.3mm	65
35	2 602 026 036	Orbital Lever	63	* 150.1	2 600 101 022	Shim 0.2mm	65
36	2 916 080 008	Circlip	89	151	2 600 150 004	Spring Washer	65
37	2 602 026 037	Air Blower Lever	64	152	2 603 435 015	Screw {2}	89
38	2 600 116 006	Circlip	89	153	2 602 319 005	Switch Slide	15
39	2 601 015 050	Gasket	79	154	2 601 328 045	Air Deflector	24
41	2 603 410 042	Screw {2}	89	155	2 910 611 005	Screw {4}	89
42	2 604 613 000	Spring {2}	27	156	1 604 652 014	Brush Spring {2}	27
43	2 601 322 010	Bow	43	157	2 605 500 074	Motor Housing Cover	9
44	2 600 780 012	Plunger	52	171	2 600 301 046	Bushing	82
45	2 602 329 011	Clamp	80	172	2 600 301 045	Bushing	82
46	2 601 321 017	Yoke	57	+ 656	2 600 306 005	Vacuum Tube	9
47	2 603 421 040	Screw {2}	89	658	2 910 771 118	Screw {6}	89
48	2 600 112 031	Washer	65	757	2 607 001 085	Metal Base w/pos. 658	88
49	2 600 290 017	Felt Washer	77	770	2 610 994 544	Dust Collection Kit	9
50	2 600 101 612	Washer	65			w/pos. 70, 79, 82, 656	
53	2 603 490 007	Blade Screw	85	801	2 605 808 917	Gear Housing	72
57	2 600 116 011	Circlip	89	802	2 605 108 904	Motor Housing Assembly	71
58	2 917 530 101	Pin	66			w/pos. 116, 155, 156	
59	2 916 080 006	Circlip	89	810	2 604 320 910	Brush Set	26
60	2 610 323 133	Screw {4}	89	813	2 607 001 130	Needle Bearing Assembly	56
62	2 915 011 007	Nut {2}	89			w/pos. 13, 14	
63	2 608 000 073	Foot Plate	88	824	2 601 072 901	Eccentric	53
64	2 601 030 007	Plate	65	830	2 600 917 900	Needle Bearing Assembly	56
65	2 910 141 197	Screw	89	840	2 605 808 921	Gear Cover Assembly	70
68	2 605 702 016	Cover	9			w/pos. 4, 41-50, 171, 172, 854	
70	2 605 730 033	Suction Flange	9	851	2 601 015 901	Gasket Assembly	77
71	2 604 617 003	Spring	80	854	2 601 321 902	Roller Guide Assembly	87
72	2 914 501 023	Screw & Washer {2}	89			w/pos. 58, 851, 855	
74	2 914 501 012	Screw & Washer {4}	89	855	2 600 326 903	Roller Assembly	87
75	2 606 491 015	Ratchet	80			w/pos. 57, 59, 77	
77	2 600 100 032	Shim 0.2mm {2}	65	861	2 605 500 900	Cover w/pos. 62	9
+ 78	2 610 907 132	Label "clic directions"	9	874	2 602 026 900	"Clic" Handle Assembly	74

+ = Not Illustrated \* = As Required F/C = Failure Code AW = Refer to AW Labor Time Chart

<b>BOSCH</b>	April 1999 <b>TECHNICAL BULLETIN</b>	<b>Section 7 - Saws</b>	model(s) affected
		"Roller Guide Service"	<b>Various</b>

To: All Authorized and Factory Service Centers,  
Field Sales and Internal Support Personnel

Re: Roller Guide Service for models

1581	(060 1581 234)	1584VS	(060 1584 639)
1581VS	(060 1581 534)	1584AVS	(060 1584 651)
1581AVS	(060 1581 666)	1584DVS	(060 1584 839)
1581DVS	(060 1581 434)	1587VS	(060 1587 639)
1581DVS	(060 1581 934)	1587AVS	(060 1587 651)
1582	(060 1582 234)	1587DVS	(060 1587 839)
1582VS	(060 1582 534)	B4200	(060 1581 535)
1582DVS	(060 1582 934)	B4201	(060 1587 635)
7561-118	(060 7561 118)	B4300	(060 1582 535)
		B4301	(060 1584 635)

Please insert this bulletin into the "Technical Bulletins" section of your Bosch Parts Manual, only after making any additions or notes to your Illustrated Parts List(s).

Please be advised that part number 2600 326 903 Roller Assembly (pos. 855 on Illustrated Parts Lists) is no longer available. A change was made that affects this parts interchangeability with older tools.

Please use part number 2601 321 902\* Roller Guide Assembly (pos. 854 on Illustrated Parts Lists) in place of 2600 326 903. The List Price for 2601 321 902 has been adjusted to \$9.00 effective immediately.

\*For exact models listed above only. Older models not listed may require different assembly number.

All questions should be directed to your Authorized Service Manager.

Product Service Department