

Release Notes: Access Professional Edition

Content

Release Notes: Access Professional Edition	1
Access Professional Edition V3.4, build 3.4.1.1	4
New Features	4
Improvements, fixed issues and customer complaints	4
New AMC Firmware:	4
Installation Notes for Windows 10.....	4
Known limitations and restrictions	5
Access Professional Edition V3.3, build 3.3.1.2	7
Hotfix	7
Improvements, fixed issues and customer complaints	7
Access Professional Edition V3.3, build 3.3.1.1	7
New Features	7
Improvements, fixed issues and customer complaints	7
Access Professional Edition and <i>SDK for cardholder data</i> compatibility list.....	8
See also notes in chapter <i>Known limitations and restrictions</i>	8
New AMC Firmware: x20	8
Installation Notes for Windows 10.....	8
Known limitations and restrictions	8
Access Professional Edition V3.2, build 3.2.1.10	11
New Features	11
Fixed issues and customer complaints	11
Access Professional Edition and API for cardholder data compatibility list	11
See also notes in chapter <i>Known limitations and restrictions</i>	11

Installation Notes for Windows 10.....	12
Known limitations and restrictions.....	13
Access Professional Edition V3.1, build 3.1.7.7	15
New features	15
Fixed issues and customer complaints	15
Known limitations and restrictions.....	15
Access Professional Edition V3.0, build 3.0.5	17
New features	17
Fixed issues and customer complaints	17
Access Professional Edition V3.0, build 3.0.4	17
New features	17
Fixed issues and customer complaints	17
Access Professional Edition V3.0, build 3.0.3	17
New features	17
Fixed issues and customer complaints	17
Access Professional Edition V3.0, build 3.0.2	18
New features	18
Fixed issues and customer complaints	18
Known limitations and restrictions.....	18
Access Professional Edition V3.0, build 3.0.1	18
New features	18
Fixed issues and customer complaints	18
Known limitations and restrictions.....	18
Access Professional Edition V3.0, build 3.0.0	20
New features	20
Fixed issues and customer complaints	20
Known limitations and restrictions.....	20

Access Professional Edition V2.1 TU1, build 2.7.60	21
New features	21
Fixed issues and customer complaints	21
Known limitations and restrictions	21
Access Professional Edition V2.1, build 2.7.52	22
New features	22
Fixed issues and customer complaints	22
Known limitations and restrictions	22

Access Professional Edition V3.4, build 3.4.1.1

Date: 20.10.2016

New Features

- Facelift – New Icons and Bmps following current Bosch style
- Support of Japanese
- New common AMC firmware for AccessPE 3.4 and BIS/ACE 4.3
- Updated documentation related to the use of single-board computer (Intel Compute Stick)
- Bug fixing of known issues

Improvements, fixed issues and customer complaints

ID#	Description
145085	The last admin user could not be deleted to prevent lock out of administration possibility.
151770	It is possible to store and reactivate filter settings made in the Logviewer.
152437	Video clips from Logviewer can be stored.
145860	Lectus 5000 MD is supported correctly.
	Device configuration – entrance definition, button to read out the device cache removed (not supported any longer by AMC)
151548 155434	ACConfig - Signal Conditions can be added and removed correctly by the offered buttons.
135900	Alarm managment: Actual alarm could be confirmed after restart of LacSP (two alarms with identical id)
147374	BadgeDesigner Text field does not show unwanted characters any longer

New AMC Firmware:

The AccessPE 3.4 installation setup includes also the new AMC firmware.
The latest AMC firmware version listed below should be used with AccessPE 3.4.

AMC type /Reader technology	Firmware filename
AMC2-4W/Wiegand	LCMV3744.RUN
AMC2-4R4/L-BUS	LCMV6022.RUN
AMC2-4R4/BG900	LCMV6122.RUN
AMC2-4R4/OSDP	LCMV6222.RUN

Installation Notes for Windows 10

For details regarding installation of Windows 10 refer to the section of the release notes of Access Professional Edition V3.2, build 3.2.1.10 in this document.

During bigger updates it may happen that, due to password restrictions, .net 3.5 is disabled. Customer has to enable it manually again after update is finished.

If after the update to Access Professional Edition 3.4 the desktop icons have not changed, the icon cache of Windows must be cleared.

Known limitations and restrictions

Upgrade to Access PE 3.4

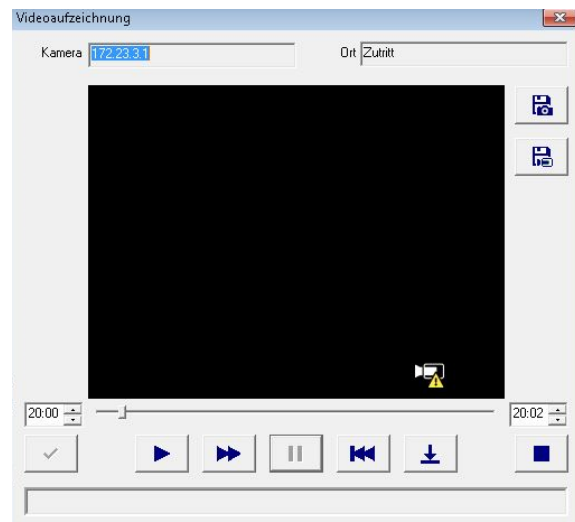
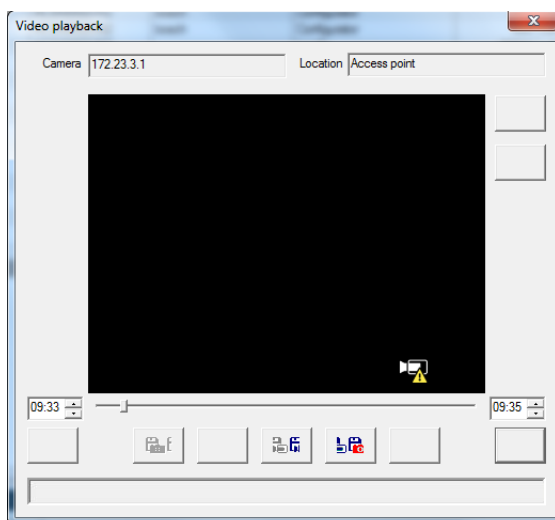
- If the setup file for an upgrade to Access Professional Edition 3.4 is started, the install routine uninstalls the existing Access Professional Edition version. The configuration can be saved during this procedure. For the final installation, the setup file has to be started again.
- In case of an update from Access Professional Edition 3.0 or an earlier release to the new release 3.4, all single authorizations IDS-ON / - OFF assigned to persons will be lost. Follow the instructions under "Update to Access PE 3.3"

Video devices supported

- Access PE 3.4 supports the video cameras as listed under:
<http://ipp.boschsecurity.com/integration-partner-program/tools/video-tools/firmware-overview/hardware-to-firmware/hardware-to-firmware>.
- Access PE supports searching for these devices in the network, live video, creating a snapshot and playback directly from the device (SD-card or CF-card recording).
- In addition, Access PE does support Divar IP 2000, however it does not support playback managed by VRM. For playback Divar IP 2000 needs to be re-configured to have the cameras directly record on Divar IP 2000 as an iSCSI target.
- For requirements beyond the support within APE, please refer to other Video Management System solutions, as e.g. Bosch Video Management System or Milestone XProtect.

Viewlog video playback

- The video playback dialog in Viewlog misses icons or does not contain the correct icons. The pictures below show the current state and the dialog with correct icons.



Group access

- Group Access can only be configured for the door models 1+3
- Group access and several cards is working with counting cards, but possibly not the persons entering
- Group access and identification PIN cannot be used together. The same keys are used to finalize the group and to start with identification PIN.

Anti-Passback

- Anti-Passback is working with cards, a person with several cards can pass his other cards to unauthorized persons
- Anti-Passback can be bypassed if you offer the card to multiple readers within opening time without entering. Once entered Anti-Passback is working.

CP service

- Shutting down the service an exception will be shown.
After restart the service will work as expected.

SQL database

- Default settings use the small date-time format: Only hh:mm is stored in the database. Seconds are rounded. If needed the exact time can be looked up in the MsgLogs.

WAV-files

- If the Wav-Files used in the APE are not working, please check under Windows\Media if they exist there and if necessary correct the settings in the ClientIni-file

Access Professional Edition V3.3, build 3.3.1.2

Date: 23.05.2016

Hotfix

- Enrolment reader LECTUS 5000 MD supported
Reader can be used without error message and ACPers shutting down. Enrolling of cards working

Improvements, fixed issues and customer complaints

ID#	Description
145860	LECTUS 5000 MD not working

Access Professional Edition V3.3, build 3.3.1.1

Date: 20.04.2016

New Features

- Support of standard communication protocol OSDP v2.1.6 via RS485 interface for encrypted bus communication between reader and controller
- Support of ancillary MS SQL database for event data to enable further utilization/management of log data in standardized data structure
- New common AMC firmware for AccessPE 3.3 and BIS/ACE 4.2
- Updated SDK for cardholder data V1.3.0.2
- Improved documentation
- Bug fixing of known issues

Improvements, fixed issues and customer complaints

ID#	Description
135410	SDK Demo App: Improvements of user interface
135691	Configurator: Improvement of random screening configuration
137588	Configurator: Support of AMC I/O boards 2 & 3 by Emergency license
138036	Logbook: Special characters for entrances like ÄÖÜ now displayed in logbook
138614	Improvements of alarm message handling
139398	Configurator: Max number of days to store log messages can be configured now
139605	Configurator: One Configurator instance can change the data at the same time
143441	Personnel Management: Improved focus handling for search field
143497	LAC-SP do not stop, in case of uninstalling clients
144287	Configurator: It is now prevented to have more than one active Configuration session
134476	LAC-SP stability improvements
144790	Pegasys: Improved deleting of Pegasys cards

Access Professional Edition and *SDK for cardholder data* compatibility list

The installed Access Professional Edition release must match to a corresponding *SDK for cardholder data* version. In case of incompatibility, the *SDK for cardholder data* is not able to connect to the Access PE service.

The *SDK for cardholder data* is replacement for the former *API for cardholder data*.

Access Professional Edition release	SDK for cardholder data version
3.3.1.1	1.3.0.2

See also notes in chapter *Known limitations and restrictions*.

New AMC Firmware: x20

The AccessPE 3.3 installation setup includes also the new AMC firmware.

The latest AMC firmware version listed below should be used with AccessPE 3.3.

AMC type /Reader technology	Firmware filename
AMC2-4W/Wiegand	LCMV3741.RUN
AMC2-4R4/L-BUS	LCMV6020.RUN
AMC2-4R4/BG900	LCMV6120.RUN
AMC2-4R4/OSDP	LCMV6220.RUN

Installation Notes for Windows 10

For details regarding installation of Windows 10 refer to the section of the release notes of Access Professional Edition V3.2, build 3.2.1.10 in this document.

Known limitations and restrictions

Upgrade to Access PE 3.3

- If the setup file for an upgrade to Access Professional Edition 3.3 is started, the install routine uninstalls the existing Access Professional Edition version. The configuration can be saved during this procedure. For the final installation, the setup file has to be started again.
- In case of an update from Access Professional Edition 3.0 or an earlier release to the new release 3.3, all single authorizations IDS-ON / - OFF assigned to persons will be lost. To keep your configuration consistent, follow the instructions below:
 - Before starting the installation of release 3.3, create a report of “Authorization-persons” by selecting all IDS-ON / -OFF authorization. Look for persons which are assigned to this specific authorizations.

- Start the *Configurator*, select each entrance configured as door model 14 by a double click, and update the entrance by clicking OK.
- Save the configuration and send it to the LAC-Service.
- Start *Personnel Management*, select the persons with single authorization for IDS-ON / -OFF authorization, and set the authorization again.

Video devices supported

- Access PE 3.3 supports the video cameras as listed under:
<http://ipp.boschsecurity.com/integration-partner-program/tools/video-tools/firmware-overview/hardware-to-firmware/hardware-to-firmware>.
- Access PE supports searching for these devices in the network, live video, creating a snapshot and playback directly from the device (SD-card or CF-card recording).
- In addition, Access PE does support Divar IP 2000, however it does not support playback managed by VRM. For playback Divar IP 2000 needs to be re-configured to have the cameras directly record on Divar IP 2000 as an iSCSI target.
- For requirements beyond the support within APE, please refer to other Video Management System solutions, as e.g. Bosch Video Management System or Milestone XProtect.

Emergency Backup license ASL-APE2P-EBL and Milestone integration

- The emergency backup license also supports the Milestone X-Protect integration. If the Milestone X-Protect integration shall be enabled, the file ...|BOSCH|Access Professional Edition|PE|Data|Cfg|Client.ini needs to be modified. See below.
[General]
BoschApeMileStoneEnabled=Y
- In case that an emergency backup license and a Milestone X-Protect license are activated in parallel, the parameter *BoschApeMileStoneEnabled* has also to be set to “Y”.
- The default setting of the parameter *BoschApeMileStoneEnabled* is “N”.
In this case, the internal Bosch video verification is enabled.
- After changing the parameter *BoschApeMileStoneEnabled*, the Access PE server should be rebooted.

Installation settings for the SDK for cardholder data

- If the *SDK for cardholder data* is installed on a PC on which an Access Professional Edition server or client is also installed, the *SDK for cardholder data* should only access to the Access PE on the local PC.
- If the API for cardholder data version V1.0.10 shipped with the AccessPE release 3.2. is updated by the latest *SDK for cardholder data* version 1.3.0.2, the API V1.0.10 needs to be uninstalled before.

Application icons disappear

- In case that an AccessPE application icon disappears, clear the Windows icon cache. For more details, refer to the Microsoft support web page.

Reader

- Only reader for L-Bus protocol are supporting write access e.g. for Pegasys offline systems.
- In case of OSDP reader installation, the OSDP reader might take several seconds to get into operation after a configuration is updated.
- If an OSDP v2 reader is configured by an AccessPE (A) and should be re-configured at an AccessPE (B), the reader needs to be set in installation mode.

Video Verification

- One AMC supports only one door model with Video Verification.
- One additional AMC must be used for each additional door model with Video Verification.

AMC

- If an AMC is configured by a system AccessPE (A) and re-configured at a system AccessPE (B), the AMC needs to reset.
- If an AccessPE in server mode is re-installed on a PC and the previous existing configuration is lost, AMCs, which are still in operation needs to reset.

VSDK

- Installation of the VSDK on Virtual Machines is not supported.

Door model 7a: Main authorization has no influence

- Authorization is implicit given. Setting the authorization manually does not make any difference.

Exit reader and arming

- Arming is not activated at exit reader, even reader has a keypad. System asks to enter a PIN, but this has no impact to arming.

Anti pass-back functionality

- Anti pass-back with timeout parameter and group check is limited to readers connected to a single AMC.
- Anti pass-back with area check works with readers connected to multiple AMCs.

Access Professional Edition V3.2, build 3.2.1.10

Date: 14.12.2015

New Features

- Microsoft *Windows 10 Pro x64 Support*
- API for cardholder data
API with development support tools for interfacing cardholder data, open/close door control and T&A / payroll systems
- Enhanced emergency license
The X-Protect integration for Milestone, API for Cardholder Data and 512 reader support are usable with the emergency license
- Video SDK 5.90 integrated, support of a selected range of latest Bosch video devices.
- 512 reader license support for all regions
- Improved documentation

Fixed issues and customer complaints

ID#	Description
123774	Personnel Management: Set location of all present persons to --unknown--: Now the events appear in the logbook
125667	Personnel Management: Double assignment of same card to a person is now prevented
129051	The persons limit is now the number of cardholders no more the number of cards
129069	33 or more AMCs are now listed in the status bar
129124	Improvement on logging for Personnel Management "Online swipe" on client
131361	Personnel Management: Wrong handling of locking after "Cancel" and changing the focus of the selected person is now fixed
132239	State of AMC was sometimes not correct if more than 32 AMC are configured
133480	Video verification while downloading 10000 persons on AMC improved

Access Professional Edition and API for cardholder data compatibility list

The installed Access Professional Edition release must match to a corresponding API for cardholder data version. In case of incompatibility, the API for cardholder data is not able to connect to the Access PE service.

Access Professional Edition release	API for cardholder data version
3.2.1.10	1.0.10.0

See also notes in chapter *Known limitations and restrictions*.

Installation Notes for Windows 10

Supported Windows 10 upgrade paths

1. The Access Professional Edition 3.2 can be installed on a PC with a pre-installed Windows 10 Professional Edition x64. Please use a language pack that supports your language. For the installation of language packs please see the hints mentioned below.
2. If the Access Professional Edition 3.2 is installed on a computer using Windows 7, you can upgrade to Windows 10. Please use the official upgrade tools for Windows 10 from Microsoft (e.g. the MediaCreationTool).

Installation of Language Packs for Windows 10 (Hints)

- Install OS language packs using lpksetup (at the command prompt with administrator rights)
- Configure a language:
 - Select your language.
 - Make sure, that the language preferences show your language at the top.
 - Change the System Locale.
 - Copy your language settings to the system account and default user.

Enrollment reader support

- For Pegasys R/W reader use the device parameters from the ISO image:
 - 3rdParty\Interflex\Device Parameters Interflex
- For LECTUS enroll 5000 MD reader use the latest driver from the ISO image:
 - 3rdParty\phg Admitto

.NET 3.5 Installation

The Video SDK requires the .NET 3.5 framework. This is included in Windows 10 but not enabled by default.

To enable this feature:

1. Open Control Panel.
2. Select "Programs and Features" and from there "Turn Windows features on or off".
3. Select ".NET Framework 3.5". The Sub-Features are not required.

This step requires administrative privileges and a running internet connection.

If this does not work for you (i.e. you are not connected to the internet) use the following workaround:

- Mount a windows 10 installation kit (e.g. to F:)
- use `"dism /online /enable-feature /featurename:NetFx3 /all /source:F:\sources\sxs /limitaccess"`

Known limitations and restrictions

Upgrade to Access PE 3.2

- If the setup file for an upgrade to Access Professional Edition 3.2 is started, the install routine uninstalls the existing Access Professional Edition version. The configuration can be saved during this procedure. For the final installation, the setup file has to be started again.
- In case of an update from Access Professional Edition 3.0 or an earlier release to the new release 3.2, all single authorizations IDS-ON / - OFF assigned to persons will be lost. To keep your configuration consistent, follow the instructions below:
 - Before starting the installation of release 3.2, create a report of “Authorization-persons” by selecting all IDS-ON / -OFF authorization. Look for persons which are assigned to this specific authorizations.
 - Start the *Configurator*, select each entrance configured as door model 14 by a double click, and update the entrance by clicking OK.
 - Save the configuration and send it to the LAC-Service.
 - Start *Personnel Management*, select the persons with single authorization for IDS-ON / -OFF authorization, and set the authorization again.

Video devices supported

- Access PE 3.2 supports the video cameras as listed under:
<http://ipp.boschsecurity.com/integration-partner-program/tools/video-tools/firmware-overview/hardware-to-firmware/hardware-to-firmware>.
- Access PE supports searching for these devices in the network, live video, creating a snapshot and playback directly from the device (SD-card or CF-card recording).
- In addition, Access PE does support Divar IP 2000, however it does not support playback managed by VRM. For playback Divar IP 2000 needs to be re-configured to have the cameras directly record on Divar IP 2000 as an iSCSI target.
- For requirements beyond the support within APE, please refer to other Video Management System solutions, as e.g. Bosch Video Management System or Milestone XProtect.

Feature: Access as group

- Reader without keyboard: To finish the access as a group, the exact number of required persons must be reached.
- Reader with keyboard: The last person of the group has to confirm the access of the group by pressing the *Enter* button of the keyboard.

Milestone integration and area behavior parameters

- In case of a Milestone X-Protect configuration, the area behavior parameters should not be set.

Emergency Backup license ASL-APE2P-EBL and Milestone integration

- The emergency backup license also supports the Milestone X-Protect integration. If the Milestone X-Protect integration shall be enabled, the file ...|BOSCH|Access Professional Edition\PE\Data\Cfg\Client.ini needs to be modified. See below.
[General]
BoschApeMilestoneEnabled=Y
- In case that an emergency backup license and a Milestone X-Protect license are activated in parallel, the parameter *BoschApeMilestoneEnabled* has also to be set to “Y”.
- The default setting of the parameter *BoschApeMilestoneEnabled* is “N”. In this case, the internal Bosch video verification is enabled.

Installation settings for the API for cardholder data

- If the API for cardholder data is installed on a PC on which an Access Professional Edition server or client is also installed, the API for cardholder data should only access to the Access PE on the local PC.

Access Professional Edition V3.1, build 3.1.7.7

Date: 06.07.2015

New features

- Video SDK 5.82 implemented, support of a selected range of latest Bosch video devices.
- Improved documentation

Fixed issues and customer complaints

ID#	Description
99428	A necessary video setting was not described in online help
99429	Configuration, button description was not consistent in German version
102939	ACAlarm stability issue fixed
104912	Doormodel 7b, input of floor numbers with two digits not possible
105068	New cameras do not work with VSDK V4.32.03.01 (new VSDK 5.82 added)
106367	Access Monitoring area issue fixed
107187	Configurator: Card type was set to default after setup with previous saved data
107381	APE customer gets randomly access rights by random
107574	APE with Pegasys: Delete person with cards in one step does not delete the whole person record
109212	Context menu of door control in map : 'Door control' independent from authorization, is always available
110576	Wrong number of possible offline groups in documentation
111269	Log viewer: System generates a lot of online/offline messages if continuous mode is off
111285	Configuration: GUI size adjusted as parts of screen were cut off
111346	Reporting, locked persons with assigned card do not appear in report "Locked persons"
112109	Setup, folders are not always deleted after uninstall
112920	Licensing of 512 readers (Chinese Market only) corrected
113018	Reporting: Includes card number 2 and card number 3 in reports persons and persons / authorizations
113019	Fixed search for card number 2 or card number 3
113201	Video Clip is reported as stored, but isn't stored
115021	Holidays depending on eastern can be defined but do not work
115041	Create video clip from of the log viewer is not possible
119207	APE with Pegasys: Fixed issue to support additional offline doors by another facility card

Known limitations and restrictions

- With APE V3.1 Windows XP is not longer supported
- After upgrade to version 3.1 or higher no backwards compatibility for the authorization configuration.
Work around: In this case use a backup of your previous configuration or reconfigure the authorizations.
- Pegasys: Depending on encoding of "Valid for" (1h, 1d, 1 week etc.), a card cannot be used for a second person in this period. (Standard setting is one day)
In case that an AMC is offline, this period is enhanced until the AMC is online again
- If the APE 3.1 is installed in a domain server environment, sharing of the "data" folder is not set.

Work around: Set the share of the folder manually as "APEDATA\$"

- For using evaluators with more than 9 floors, the input of floor number needs 2 digits. Change the reader text configuration in the configuration dialogue. Change the placeholder for floor numbering from "_" to "__"
- After a new installation, the number of activated card types should be verified. The number of activated card types should be reduced to the maximum of four.

Video SDK 5.82

- Video SDK is not supported on Windows Server operation systems.
- Windows 7 SP1 (32bit, 64bit in 32bit emulation mode), .Net framework 3.5 required.
- All Microsoft updates and hot fixes are expected to be installed on target PCs, graphics card drivers are also expected to have the latest officially released version.
- Supported graphics cards:
 - The list of supported graphics cards lists all graphics cards that have been successfully tested with Video SDK. Graphics cards not listed here must be at least fully compatible to DirectX 9.
 - ATI :
FirePro V2460 V3700 V3800 V3900 V4800 V4900 V5700 V5800
V5900 V7900 V8800
FireGL V5600 V7200
 - NVIDIA :
Quadro 600 2000 5000
Quadro FX 580 1400 1500 1700 1800 3500 3700 3800 4000 4600
4700 4800
Quadro Fermi 2000 4000
NVS 295 440 450
GTS 52

Access Professional Edition V3.0, build 3.0.5

Date: 06.02.2015

New features

- No new features

Fixed issues and customer complaints

ID#	Description
106245	Milestone Time zone issues
101881	Disabled unused "Web access to PE" on "Access Control Administration" at Milestone XProtect Client

Access Professional Edition V3.0, build 3.0.4

Date: 23.10.2014

New features

- No new features

Fixed issues and customer complaints

ID#	Description
102116	Authorization group with time model doesn't work

Access Professional Edition V3.0, build 3.0.3

Date: 01.10.2014

New features

- No new features

Fixed issues and customer complaints

ID#	Description
101801	Milestone: APE together with Milestones does not work without APE-Video-License
101857	MapEditor and MapViewer is not showing device delete notification (crossed symbol) for camera devices

Access Professional Edition V3.0, build 3.0.2

Date: 21.08.2014

New features

- No new features

Fixed issues and customer complaints

Description
Communication with 12 th and 24 th AMC Online status corrected on the Log Viewer UI (Existing known bug: After AMC Offline, door status may be wrong, it is actualized after the next access with AMC online)
Help files for configuration dialog for German language is updated.

Known limitations and restrictions

- Existing Log viewer delay in updating device states and events still persist.
- Camera search will not work in case of workstation is configured multiple IP address in the network settings.

Access Professional Edition V3.0, build 3.0.1

Date: 07.07.2014

New features

- No new features

Fixed issues and customer complaints

Description
Debug log information issue has been fixed for simplified Chinese & Russian language
Door model name display issue has been fixed for simplified Chinese & Russian language
Overwritten Alarm message has been fixed for various Input/output point
Help files for configuration dialog all language is updated

Known limitations and restrictions

- After AMC Offline, door status may be wrong, it is actualized after the next access with AMC online.
- Existing Log viewer delay in updating device states and events still persist.
- Camera search will not work in case of workstation is configured multiple IP address in the network settings.



Access Professional Edition V3.0, build 3.0.0

Date: 09.04.2014

New features

- Introduced new Map editor UI under AC Config application to configure building floor plans.
 - Map editor gives flexibility to drag and drops the access control & camera devices on the maps.
 - Building floor plan maps can be organized as map tree to represented their building floor plan in a hierarchy model.
- Alarm management UI enhanced to show animation alarms on the devices, in case of alarm.
 - In case of alarm, respective map will be populated automatically along with animation alarm to the operators.
 - Supports map navigation
 - Supports several control commands for access control devices.
 - Supports live device state updates on the maps.
- Extended Enrollment Readers
 - Field readers that are connected to AMC can be reusable for card enrollment process.
 - Supports LECTUS enroll 5000 MD – MIFARE Data Recording (PXX) for card enrollment.
- Support new Mifare 56bit card type.
- Support new 63 bit Bosch Code card data record format.

Fixed issues and customer complaints

Description
APE client Installation works with domain network
Revised elevator configuration
Elevator pin supports more than 1 digit
If there was an Access Personal Edition and an Access Professional Edition 2.0 installed on the same computer, the registry key of the Access Personal Edition remains and has to be removed manually
Separate PIN code for arming / disarming
Added Pegasys multiple authorization button
Communication with 64 th AMC is connected successfully
Blocking Wiegand Extension Board to 4R4 AMC
Test connection to AMC is enabled after the configuration is active
User can select manual mode in Card definition dialog
Double click selected alarm for acknowledging alarm is removed to avoid accidentally acknowledge. Only button click allowed for acknowledge any alarm
Avoid multiple LAC entries with same IP address
Pegasys: A card with valid from cannot longer be written
Pegasys: Defining the "Valid for" after rewriting the time is wrong for month and Year
APE accepts only „old“ facility cards with a length of 85 Byte. However, the factory standard at Normbau is a facility card with the size of 89 Byte
APE can use only one sector for Pegasys, therefore a quantity structure of 256/2 (door groups/single authorizations). APE creates no error when reading a bigger card.

Known limitations and restrictions

- After AMC Offline, door status may be wrong, it is actualized after the next access with AMC online

- Existing Log viewer delay in updating device states and events still persist.
- Camera search will not work in case of workstation is configured multiple IP address in the network settings.

Access Professional Edition V2.1 TU1, build 2.7.60

Date: 01.10.2012

New features

- No new features

Fixed issues and customer complaints

Description
Additional output signals (e.g. door opened) can be configurated, but they are not sent to the AMC
The time models init card for offline systems was written incorect, time models could not be assigned correctly to a person
The evaluation of the validity of offline cards has been corrected
Installshield gives a warning, that older versions have to be deinstalled before installation
The door status showed not the correct state of the door and sometimes the context menu freezes
Support Mifare Desfire readers with new software to avoid that cards are destroyed while writing offline rights
The APE persons dialog crashes when using Admitto enrolment readers
Log entries with daylight saving incorrect
The coming/leaving time of persons was not always shown in the main dialog

Known limitations and restrictions

- After AMC Offline, door status may be wrong, it is actualized after the next access with AMC online.
- If there was an Access Personal Edition and an Access Professional Edition 2.0 installed on the same computer, the registry key of the Access Personal Edition remains and has to be removed manually.
- Camera search will not work in case of workstation is configured multiple IP address in the

Access Professional Edition V2.1, build 2.7.52

Date: 20.06.2012

New features

- APE supports Windows 7 and Windows Server 2008
- APE is installable and workable without Video SDK.
- Confirmation of successful license activation.

Fixed issues and customer complaints

Description
Save CP settings at update
Grant access after time out of video surveillance if configured
Appearance of message filter fixed, filtering of messages with more than three digits
Setting of number of bits and modes in card definition fixed
Assignment single access entries fixed
Searching is now also possible by pressing the "Enter"-key
Update of license dialog fixed
Log entries with daylight saving incorrect
Configuration of video verification per reader instead of door
Pin transfer to LAC fixed
Change of display texts in all languages
Door Pin will not be checked against identification PIN
Using Pegasys you often have the message maximum reached
Reset of PIN error counter fixed
Update of Wiegand card definition on system update fixed
Randomly lost of the authorization when cardholder is deleted
Layout of persons table fixed
User cannot start up Configurator via personal management and client PC
LAC sent timemodels only for 2 months
Cards are not correctly written if MAG set with sector 0
USB-Reader and entry read/write reader writing different information
Door PIN is not door specific defined

Known limitations and restrictions

- Video SDK is not able to save files with Windows Server 2008.