


B Series Control Panel

Installer Quick Start Guide

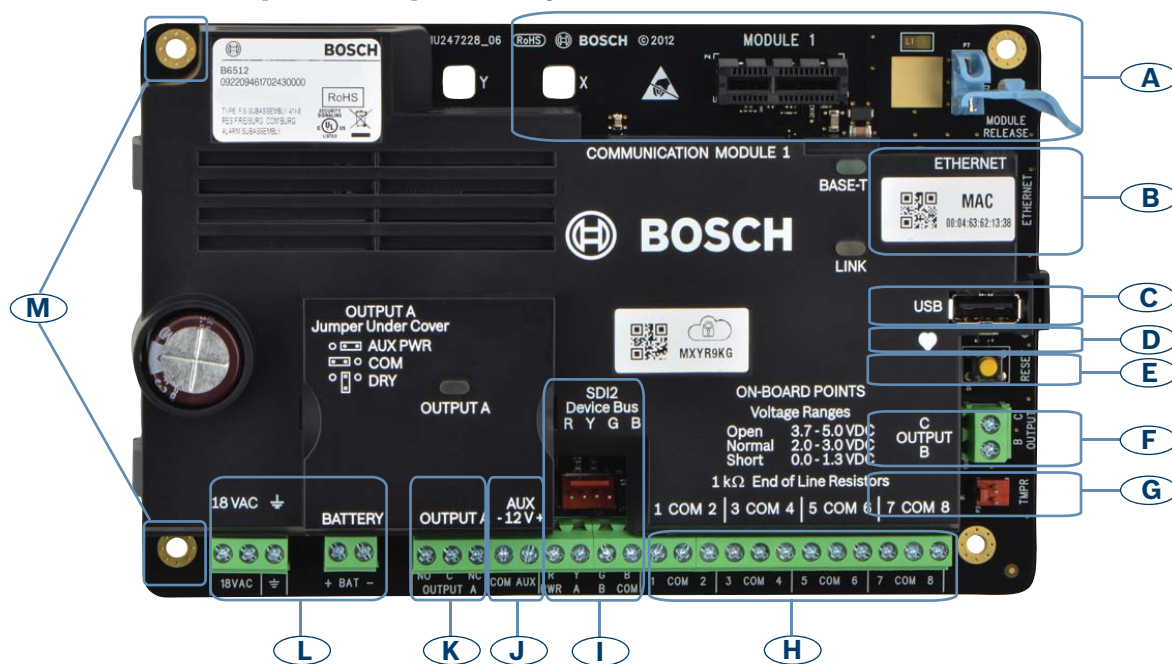
Use this guide to quickly install a B6512/B5512/B4512/B3512 Bosch security system. Additional information is found in the Control Panel Installation & System Reference Guide.

 When you see this icon, use your smart phone with a QR code reader app to view helpful videos.


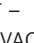
For Additional Training:



Control panel component layout



Control panel connection location

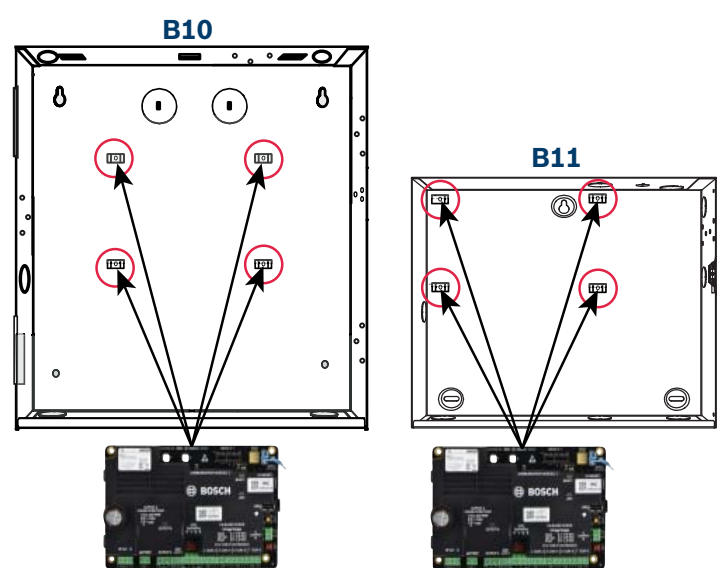
Location	Item	Description	Specification
A	MODULE 1	Plug-in comm module	Communication module options
B	ETHERNET	Ethernet port	built-in on-board Ethernet connection (10Base-T/100Base-T)
C	USB	USB port	USB connector (for firmware updates and RPS connection)
D		Heartbeat LED	Slow=normal, rapid=service mode
E	Reset	Reset switch	Hold five seconds to enter or exit service mode
F	B C	Outputs B(2) C(3)	Open collector, 50mA, active low
G	TMPR	Tamper	Optional Tamper Switch Connector
H	1 COM 2 to 7 COM 8	Alarm inputs	1k Ω EOL
I	R Y G B	SDI2 bus	SDI2 device bus
J	COM AUX	Aux power	12 VDC, 800mA
K	NO C NC	Output A(1)	Programmable relay output
L	+ BAT - 18 VAC, 	Battery, Earth ground, 18 VAC	Primary/Secondary power and Earth Ground connections
M	Mounting	Mounting holes	Mounting holes for Control panel

Step 1 Mounting the control panel

Location **M**

Bosch Tips:

- Mount the enclosure prior to mounting the control panel.
- Mount control panel into enclosure with hardware provided.

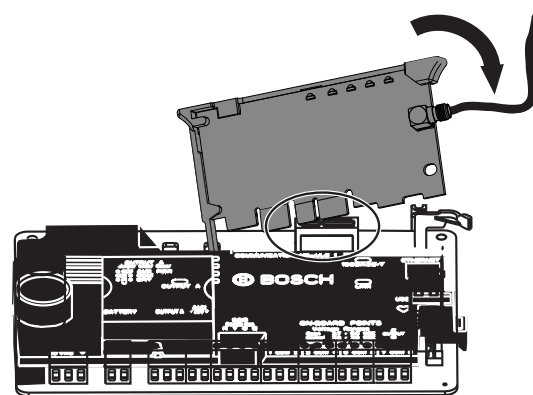


Step 2 Installing a communication module

Location **A**

Bosch Tips:

- Insert leg of module into slot marked "x."
- Cellular:** Place antenna on top of enclosure and run cable inside, then connect to module.
- PSTN:** Connect module to a D166 (RJ31x) jack using a D161/D162 cable.

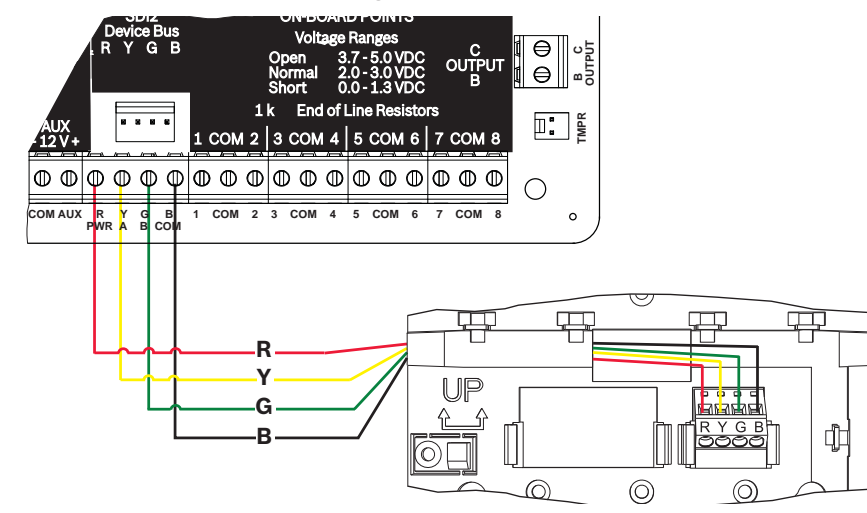


Step 3 Installing a keypad

Location **I**

Bosch Tips:

- If installing a B942 or B915, refer to keypad installation guide for wiring diagrams.
- If installing more than one keypad, refer to keypad installation guide for unique address settings.

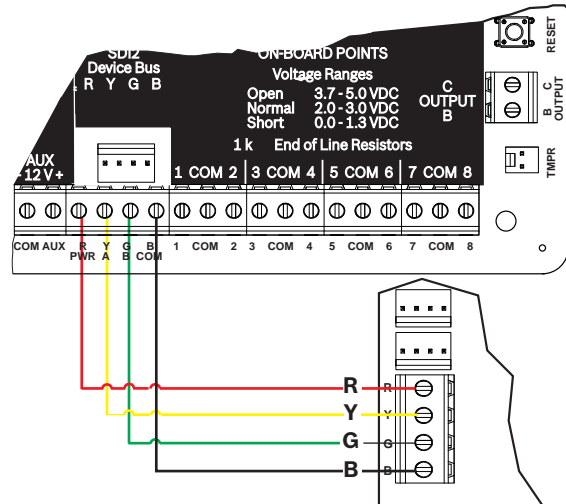


Step 4 Installing expansion modules

Location **I**

Bosch Tips:

- If installing more than one device that is similar, refer to the modules installation guide for address settings (for example, two of the same device).
- If installing a RADION B810 wireless receiver, use address 1 only.

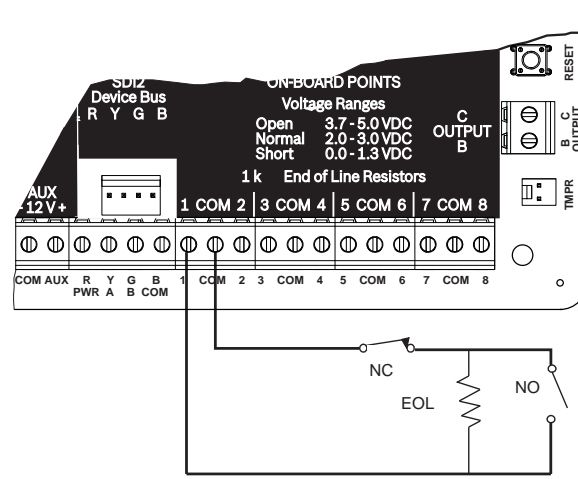


Step 5 Installing wired inputs

Location **H**

Bosch Tips:

- If using a dual EOL, 2K EOL, or No EOL, refer to control panel installation guide for control panel settings.
- If using 2-wired powered devices, use a B201 or D125B.

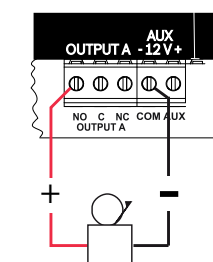


Step 6 Installing a bell or siren

Location **JK**

Bosch Tips:

- Output A can supply up to 1 amp at 12 VDC when sourced from a control panel (Jumper in AUX PWR position).
- Output A can support up to 3 amps at 12 VDC when using a separate power supply (Jumper in DRY position).
- Output B and C are open collector and are limited to 50 mA at 12 VDC.

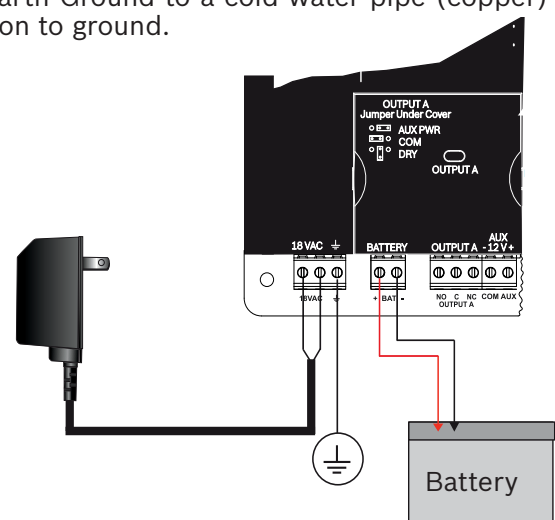


Step 7 Powering the control panel

Location **L**

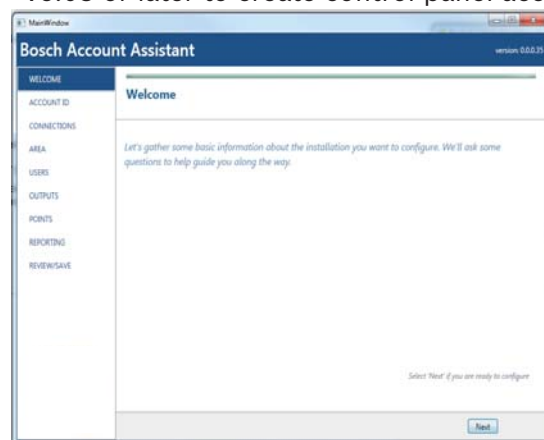
Bosch Tips:

- Connect wires to control panel before applying battery or AC power.
- Connect Earth Ground to a cold water pipe (copper) or other solid connection to ground.



Step 8 Creating control panel accounts

- Follow Account Assistant instructions within RPS v6.03 or later to create control panel accounts.



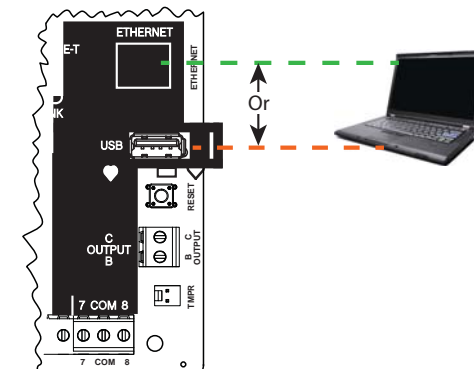
- If RPS is not available, Keypad Programming is an option. Refer to Installation Instructions.

Step 9 Connecting the control panel

Location **BC**

Bosch Tips:

- Connect a computer with Remote Programming Software (RPS) installed. Connecting to RPS can be done through the use of a USB or Ethernet connection.
- Launch RPS 6.03 or greater. The Account Assistant automatically launches when you create a new account.
- For USB direct connect use a B99 USB cable.



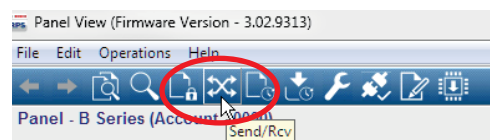
B Series Control Panel Installer Quick Start Guide



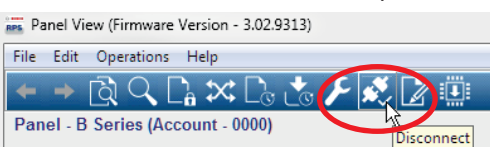
Step 10 Send program to control panel

Bosch Tips:

- Press **Send** from the Account Assistant when program is ready.



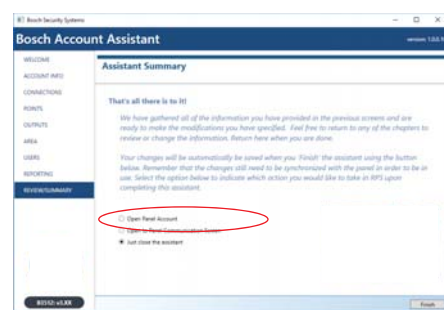
- Press **Disconnect** from control panel when programming is complete.



Step 11 Entering Classic Mode in RPS

Bosch Tips:

- Switch to **Classic Mode** if your system requires further programming such as using multiple areas. After programming changes, repeat step 10.



Step 12 Disconnect from RPS and test the system

After system installation and control panel programming, perform a complete system test. A complete system test includes testing the control panel, all devices, and communication destinations for proper operation.

Bosch Tips:

- Perform a Walk Test.
- Send a test report



FAQs

What is my default code?

User Code: **123456**
Installer Code: **123**

How do I use Output B and C?

Outputs B and C are Open Collector Outputs. Wiring can be found in control panel installation manual, section heading **Open Collector Outputs**.

How do you remotely turn on and turn off the control panel?

This can be done through the use of the Remote Security Control App (RSC).

How do I connect directly to the control panel with Ethernet?

By default, the control panel is set up to auto detect and negotiate a connection to RPS when an ethernet cable is connected between them.

What do I need to be able to send personal notifications?

SMS (Text) messages require the use of a cellular module and emails can be sent by either an Ethernet or Cellular connection.

How do I enter "Service Mode"?

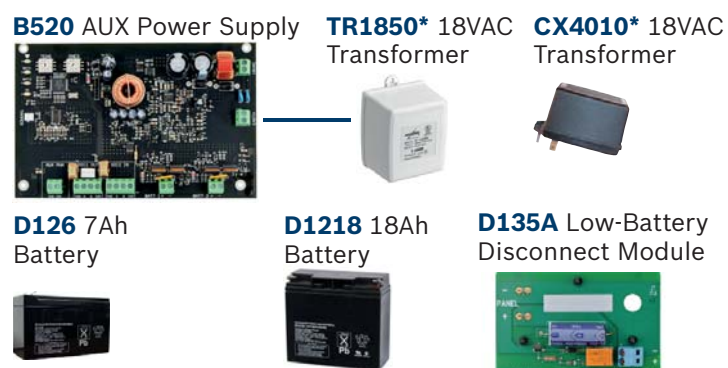
Press and hold the yellow reset button on the control panel for 5 seconds (repeat to exit).

B Series Control Panel Accessories (partial list)

Note: Not all products and features are available in all regions. Consult your Bosch representative or product datasheets for details.

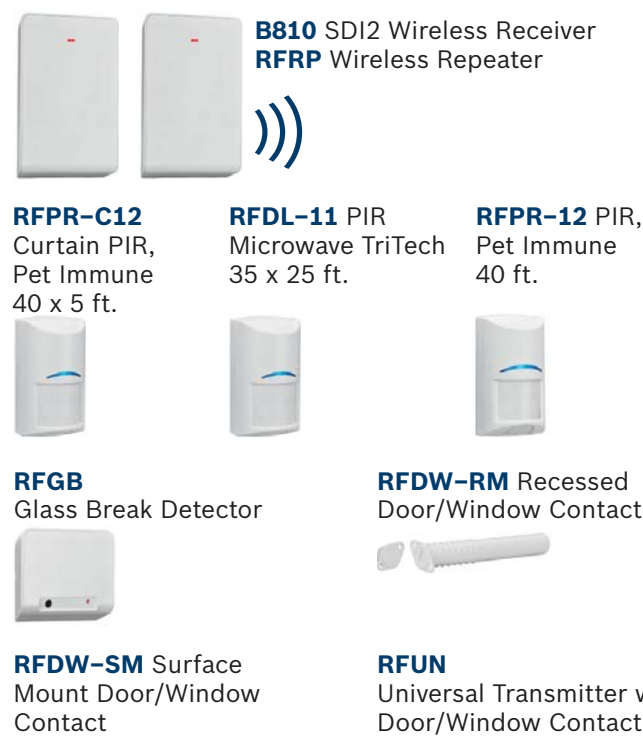
Power

*Country Specific variants will apply



RADION Wireless Devices

-A versions of RADION devices are used in North and South America. Non -A versions are used in Europe, Africa, and Australia.



Inovonics Wireless Devices



Programming and Software



Control panel



Keypads



RFID Tags for Readers & B942 Keypads

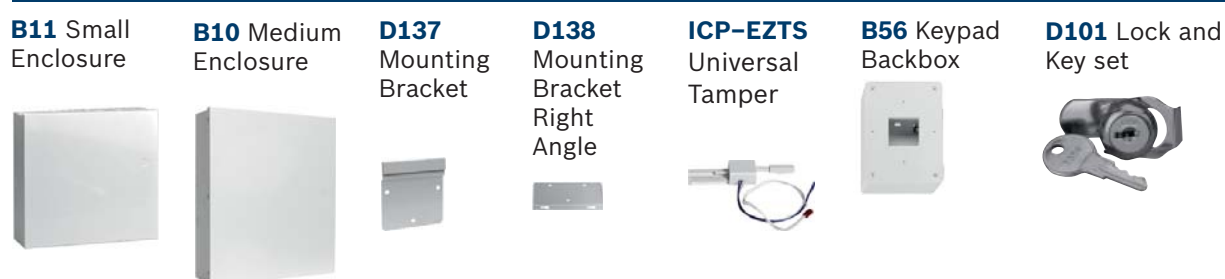


IP Camera Integration

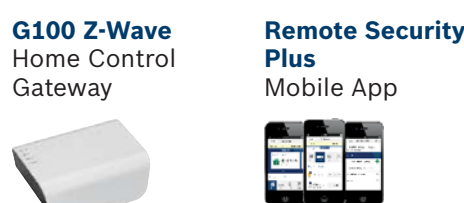
Any Bosch IP camera



Enclosures & Accessories



*Automation



*Home automation may not be available in all regions. Consult your Bosch representative for details.

Communicators

B430 Telephone (PSTN)



B440-C Cellular (Verizon 3G CDMA)



B441-C Cellular (Verizon CDMA)



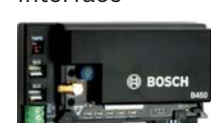
B442 Cellular (GPRS SIM Required)



B443 Cellular (HSPA+ SIM Required)



B450 Remote Cellular Interface



Residential Fire

D132A Reversing Relay



D125B Dual Class B Initiating Module



D192G Bell Super Vision Module



B201 2-wire powered loop



F220/F220-B6R Smoke Detector plus Base



Access Modules (B6512 only)

B901 Access Module



I/O Expansion Modules

B208 Octo-Input Module



B308 Octo-Output Module



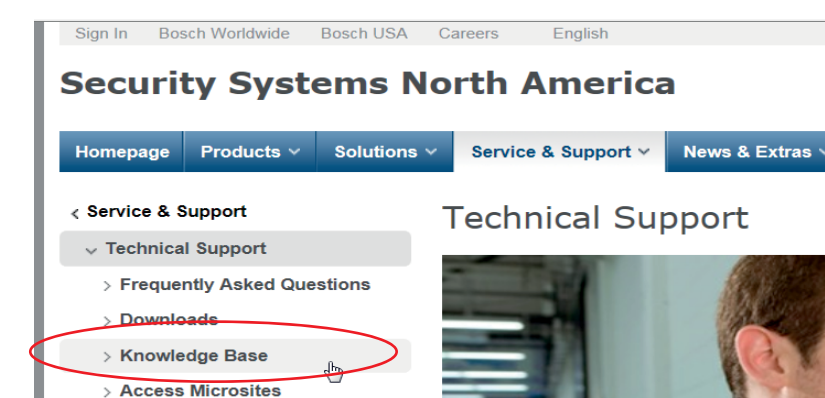
Where can I go for additional help?

For additional help, tips and other useful information, visit the Security Knowledge Base link on our website.

Go to: <http://us.boschsecurity.com>

You can also scan in the QR code.

Navigate to the **Knowledge Base** link as shown in the adjacent illustration.



us.boschsecurity.com

