

***BOSE***<sup>®</sup>



---

# SoundLink<sup>®</sup> Air

## digital music system

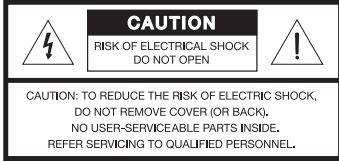
---

Owner's Guide

## SAFETY INFORMATION

### Please read this owner's guide

Please take the time to follow the instructions in this owner's guide carefully. It will help you to set up and operate your system properly and enjoy its advanced features. Please save this owner's guide for future reference.



The lightning flash with arrowhead symbol within an equilateral triangle alerts the user to the presence of uninsulated, dangerous voltage within the system enclosure that may be of sufficient magnitude to constitute a risk of electric shock.



The exclamation point within an equilateral triangle, as marked on the system, is intended to alert the user to the presence of important operating and maintenance instructions in this owner's guide.



**WARNING:** This product contains magnets which can be harmful to pacemaker wearers.



**WARNING:** Contains small parts which may be a choking hazard. Not suitable for children under age 3.



**WARNING:**

- To reduce the risk of fire or electrical shock, do not expose the product to rain or moisture.
- Do not expose this apparatus to dripping or splashing, and do not place objects filled with liquids, such as vases, on or near the apparatus. As with any electronic products, use care not to spill liquids into any part of the system. Liquids can cause a failure and/or a fire hazard.
- Keep the remote control battery away from children. It may cause a fire or chemical burn if mishandled. Do not recharge, disassemble, heat above 100°C (212°F), or incinerate. Dispose of used batteries promptly. Replace only with a battery of the correct type and model number.
- Danger of explosion if battery is incorrectly replaced. Replace only with an agency-approved (e.g., UL) CR2032 or DL2032 3-volt lithium battery.
- Do not place any naked flame sources, such as lighted candles, on or near the apparatus.



**CAUTION:** Make no modifications to the system or accessories. Unauthorized alterations may compromise safety, regulatory compliance, and system performance.



**CAUTION:** Operate this product within the temperature range of -4°F to 113°F (-20°C to 45°C).

### Please complete and retain for your records:

The serial number can be found on the bottom panel.

Serial number \_\_\_\_\_

Purchase date \_\_\_\_\_

## SAFETY INFORMATION

### Note:

- Where the mains plug or appliance coupler is used as the disconnect device, such disconnect device shall remain readily operable.
- The product must be used indoors. It is neither designed nor tested for use outdoors, in recreation vehicles, or on boats.
- This product is intended to be used only with the power supply provided.
- The product label is located on the bottom of the product.

**CE** Bose Corporation hereby declares that this product is in compliance with the essential requirements and other relevant provisions of Directive 1999/5/EC and all other applicable EU directive requirements. The complete Declaration of Conformity can be found at [www.Bose.com/compliance](http://www.Bose.com/compliance).



**Please dispose of used batteries properly**, following local regulations. Do not incinerate.

### Important Safety Instructions

1. Read these instructions.
2. Keep these instructions.
3. Heed all warnings.
4. Follow all instructions.
5. Do not use this apparatus near water.
6. Clean only with a dry cloth.
7. Do not block any ventilation openings. Install in accordance with the manufacturer's instructions.
8. Do not install near any heat sources, such as radiators, heat registers, stoves, or other apparatus (including amplifiers) that produce heat.
9. Protect the power cord from being walked on or pinched, particularly at plugs, convenience receptacles, and the point where they exit from the apparatus.
10. Use only attachments/accessories specified by the manufacturer.
11. Unplug this apparatus during lightning storms or when unused for long periods of time.
12. Refer all servicing to qualified service personnel. Servicing is required when the apparatus has been damaged in any way, such as power supply cord or plug is damaged, liquid has been spilled or objects have fallen into the apparatus, the apparatus has been exposed to rain or moisture, does not operate normally, or has been dropped.

### Information about products that generate electrical noise

#### U.S.A. only

This equipment has been tested and found to comply with the limits for a Class B digital device, pursuant to Part 15 of the FCC rules. These limits are designed to provide reasonable protection against harmful interference in a residential installation. This equipment generates, uses, and can radiate radio frequency energy and, if not installed and used in accordance with the instructions, may cause harmful interference to radio communications. However, there is no guarantee that interference will not occur in a particular installation. If this equipment does cause harmful interference to radio or television reception, which can be determined by turning the equipment off and on, you are encouraged to try to correct the interference by one or more of the following measures:

- Reorient or relocate the receiving antenna.
- Increase the separation between the equipment and receiver.
- Connect the equipment to an outlet on a different circuit than the one to which the receiver is connected.
- Consult the dealer or an experienced radio/TV technician for help.

## SAFETY INFORMATION

### Canada

These devices comply with FCC and Industry Canada RF radiation exposure limits set forth for general population. This device complies with Industry Canada license-exempt RSS standards. Operation is subject to the following two conditions: (1) This device may not cause interference, and (2) this device must accept any interference, including interference that may cause undesired operation of the device.

Output power: 12 dBuV/m at 3m @ 2.45 GHz

### U.S.A. and Canada

This equipment complies with FCC and Industry Canada radiation exposure limits set forth for an uncontrolled environment. This equipment should be installed and operated with a minimum distance of 20 cm between radiator and your body. This transmitter must not be co-located or operating in conjunction with any other antenna or transmitter.

### FCC WARNING

Changes or modifications not expressly approved by Bose Corporation could void the user's authority to operate this equipment.

Names and Contents of Toxic or Hazardous Substances or Elements						
Part Name	Toxic or Hazardous Substances and Elements					
	Lead (Pb)	Mercury (Hg)	Cadmium (Cd)	Hexavalent (CR(VI))	Polybrominated Biphenyl (PBB)	Polybrominated diphenylether (PBDE)
PCBs	X	0	0	0	0	0
Metal parts	X	0	0	0	0	0
Plastic parts	0	0	0	0	0	0
Speakers	X	0	0	0	0	0
Cables	X	0	0	0	0	0

0: Indicates that this toxic or hazardous substance contained in all of the homogeneous materials for this part is below the limit requirement in SJ/T 11363-2006.

X: Indicates that this toxic or hazardous substance contained in at least one of the homogeneous materials used for this part is above the limit requirement in SJ/T 11363-2006.



The SoundLink® Air digital music system works with iPod touch, iPhone, and iPad devices with iOS 4.3.3 or later, and computers running iTunes 10.2.2 or later.

SoundLink is a registered trademark of Bose Corporation in the U.S. and other countries.

AirPlay, the AirPlay logo, iPad, iPhone, iPod Touch, iTunes, Mac, Bonjour, and Safari are trademarks of Apple Inc., registered in the U.S. and other countries.

Wi-Fi is a trademark of the Wi-Fi Alliance.

©2012 Bose Corporation. No part of this work may be reproduced, modified, distributed, or otherwise used without written permission.

## CONTENTS

---

<b>INTRODUCTION</b>	<b>6</b>
Overview . . . . .	6
Unpacking . . . . .	6
<b>GETTING STARTED</b>	<b>7</b>
Connecting the system to power . . . . .	7
System setup . . . . .	8
Moving the system after Wi-Fi® setup . . . . .	10
<b>OPERATION</b>	<b>11</b>
Power on/off (standby) . . . . .	11
Controlling the volume . . . . .	11
Listening to an AirPlay compatible device . . . . .	11
Listening to a device using AUX . . . . .	12
<b>CARE AND MAINTENANCE</b>	<b>13</b>
Troubleshooting . . . . .	13
Contacting Customer Service . . . . .	13
Replacing the remote battery . . . . .	14
Alternate setup method . . . . .	15
Configuring your network manually . . . . .	15
Turning on/off Wi-Fi capability . . . . .	16
Updating system software . . . . .	17
Software update procedure . . . . .	17
Alternate update method . . . . .	18
Optional battery (not included) . . . . .	19
Performing a factory reset . . . . .	20
Limited warranty information . . . . .	21
Technical information . . . . .	21

## INTRODUCTION

### Overview

Thank you for purchasing the SoundLink Air® digital music system. This system lets you enjoy clear, room-filling sound, streamed wirelessly via AirPlay using your iPad, iPhone, iPod touch or any computer running iTunes.

#### Using the SoundLink Air you can:

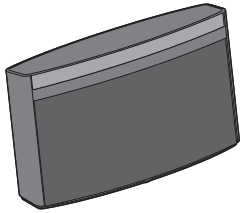
- Stream your favorite music from the music library or other AirPlay enabled apps on your iPod touch, iPhone, or iPad.
- Stream music from iTunes on your computer over your Wi-Fi network.
- Connect an additional analog audio source to the AUDIO IN connector.

#### To use AirPlay with the SoundLink Air system you will need any one of these:

- iPod touch, iPhone, or iPad device with iOS 4.3.3 or later
- PC or Mac running iTunes 10.2.2 or later

### Unpacking

Carefully unpack the carton and confirm that you have all the parts shown here:



SoundLink® Air  
digital music system



Remote control



Power supply



USB cable



Power supply  
AC adapter(s)\*

*\*The appropriate AC adapter is supplied for your region. The plastic bag may contain more than one adapter.*

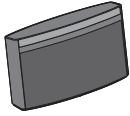
If any part of the product appears to be damaged, do not attempt to use it. Contact your authorized Bose® dealer immediately or contact Bose customer service. Refer to the contact list enclosed in the carton for contact information.

Be sure to save the carton and packing materials. They provide the safest means for transporting or storing the product.

## GETTING STARTED

### Connecting the system to power

#### What you need:



SoundLink® Air  
digital music system



Power  
supply

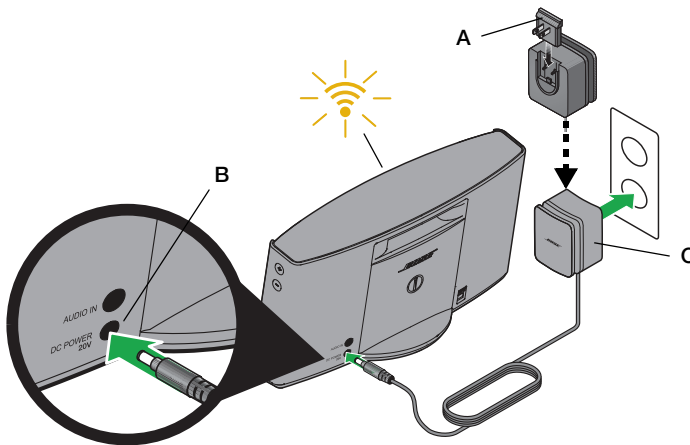


AC  
adapter

**CAUTION: FOR CHINA AND KOREA –**  
An adaptor for your system is provided in a small bag that is labeled with the name of your country. Be sure to use only that adaptor.

1. Place the system close to your computer.  
Keep all system parts close by so they are easy to reach when you need them.
2. Connect the system to power:
  - A. Attach the AC adapter for your region to the power supply.
  - B. Plug the DC power cord on the power supply into the **DC POWER** connector on the SoundLink Air system.
  - C. Plug the power supply into an AC (mains) outlet.

You will hear a short tone indicating a power connection was made. The front panel Wi-Fi® indicator should start blinking amber.



## GETTING STARTED

# System setup

The SoundLink® Air system requires a connection to your Wi-Fi® network to receive AirPlay streamed audio. The following steps guide you through the *preferred* method for setting up your system.

**Note:** For another setup method, see “Alternate setup method” on page 15.

### What you need:



USB cable



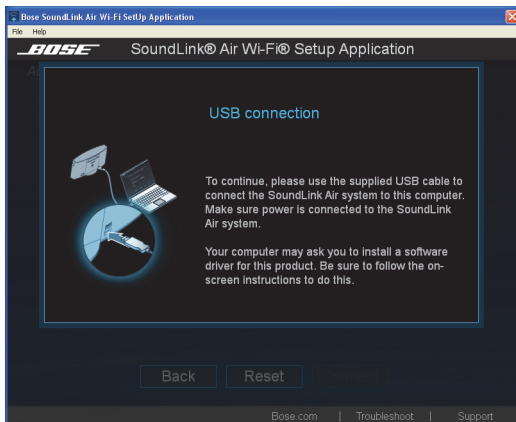
Remote control

1. Open a browser on your computer and go to <http://www.Bose.com/wifisetup>.
  - For convenience, the URL is written on the product label located on the bottom of the system.
  - Make sure the SoundLink Air is connected to power before you continue.
2. Follow the online instructions to download and run the Wi-Fi Setup Application.

**Note:** After starting the setup application, you may be asked to install a software driver. Make sure you do this before connecting the SoundLink Air system to your computer.

**Note:** Do not remove power from the SoundLink Air system while downloading and running the Wi-Fi setup application.

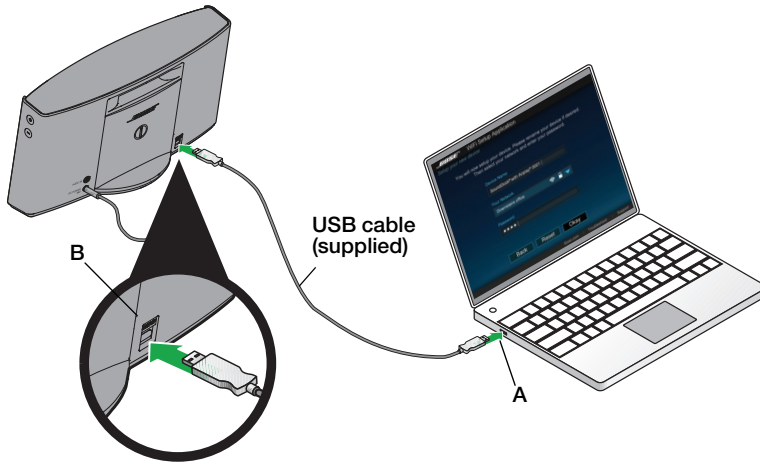
3. When prompted by the following image, connect the system to your computer using the supplied USB cable.





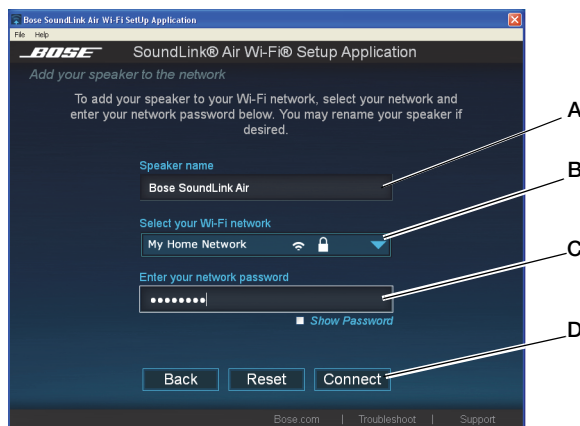
## GETTING STARTED

- A. Plug the large connector of the provided USB cable into a USB port on your computer.
- B. Plug the other end into the **SETUP** connector on the SoundLink® Air system.



**Note:** The **SETUP** connector is used only for system setup functions. This connector can not be use to play audio from any device.

4. In the setup window, enter the requested information
  - A. **Speaker name** - This field displays the system name “Bose SoundLink Air.” We recommend that you select the **Speaker name** and change it to something that helps you identify it better, such as “Living Room SoundLink Air.” This is the name that will appear in the list of available devices on your AirPlay compatible device.



## GETTING STARTED

---

- B. **Select your Wi-Fi network** - This field should display the name of your wireless network. If you have more than one, click the triangle (▼) and select the network you want from the drop-down list.

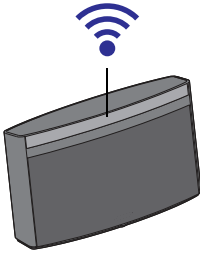
If your network name does not appear in the list or it is hidden, select **Other** from the drop-down list and manually set up your network

- C. **Enter your network password** - If you are using a secured network, enter your password.
- D. Click **Connect**.

A progress screen is displayed while the system works on connecting. This may take up to three minutes. You may cancel at any time during the process. If it fails to make a connection, make sure your network name and password are correct and try again.

5. Wait for the connection confirmation:

A confirmation dialog is displayed on your computer, the system emits a tone and the front panel Wi-Fi indicator changes to solid blue.



Your system is now ready to stream audio from an AirPlay compatible device. See “Listening to an AirPlay compatible device” on page 11.

## Moving the system after Wi-Fi setup

---


After the initial setup, you can move the SoundLink Air system to any location within the range of your Wi-Fi network. Remove the power cord from the AC outlet, move the system and plug it in again. The Wi-Fi indicator will start blinking blue as the system works on automatically connecting to your network again. When connected, the system will emit a tone and the Wi-Fi indicator will be solid blue.


**Note:** If you change anything in your Wi-Fi network, or move the system to a location where it is within the range of a different Wi-Fi network, you will need to run the setup application again. When you move it back to within range of your original network, the system will automatically connect without needing to run the setup application again. The system remembers the last four Wi-Fi networks used.

---

## OPERATION

### Power on/off (standby)

To turn the system on, press the remote power button . If the system is connected to your Wi-Fi network (solid blue Wi-Fi indicator), you can also turn it on by streaming AirPlay audio.




Press the remote power button  to turn the system off (put in standby).


If the system is connected to your Wi-Fi network when you turn it off, the Wi-Fi connection is maintained (Wi-Fi indicator is still solid blue but dimmed).

**Note:** After 30 minutes of no activity, the system automatically turns off (standby).

### Controlling the volume

To increase or decrease the system volume:

- Use the volume up  and down  buttons on the remote, on the right-hand side of the speaker, or the volume controls on your AirPlay compatible device.
- Press the remote mute button  to silence the system. Press it again to restore the sound. When muted, the front panel mute icon glows white.

**Note:** The front panel indicator for the selected source ( or AUX) blinks with every button press to verify the command.


### Listening to an AirPlay compatible device




After connecting to your wireless router, the SoundLink® Air digital music system is ready to stream AirPlay audio at any time. If an AUX source is connected and playing when you begin streaming audio from your AirPlay compatible device, that source stops and you will hear the AirPlay audio stream.

To listen to streamed audio:

1. Start a music app on your AirPlay compatible device or computer. Make sure it is connected to the same Wi-Fi network as the SoundLink Air system.
2. To make sure the initial volume is not too loud, move the volume slider in the music app to within the lower third of the scale.

## OPERATION

3. Tap or click the AirPlay icon  and select the “SoundLink Air” (or the name you gave it) from the list of available speakers.
4. Start playing music tracks.

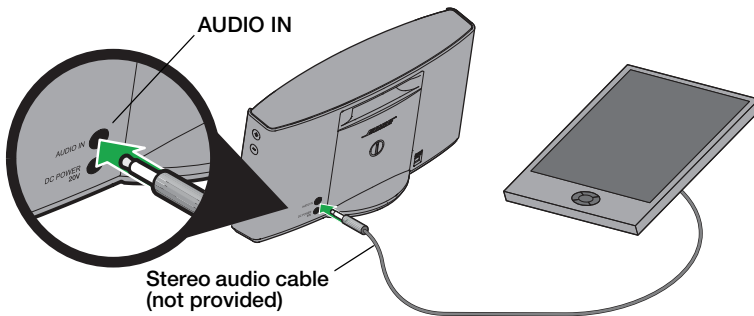
You can use the play/pause , skip forward , or skip backward  buttons on the SoundLink Air remote to control playback of your music.


**Note:** To remotely control iTunes using the SoundLink Air remote, you will need to change a setting in the iTunes **Preferences** menu. Start iTunes and open the **Edit** menu. Select **Preferences** and click on **Devices**. Click to place a checkmark next to “**Allow iTunes audio control from remote speakers.**”

## Listening to a device using AUX

You can use the SoundLink Air system to listen to any audio device that can connect to the 3.5 mm **AUDIO IN** connector on the rear panel.

1. Plug the device into the **AUDIO IN** connector.



2. Set the volume control of the device to slightly less than maximum.
3. Press the remote AUX button . The front panel AUX indicator (AUX) glows white.
4. Use the SoundLink Air system volume buttons to set the audio level.

**Note:** The SoundLink Air remote does not control any functions on an AUX device connected to the **AUDIO IN** connector.

## CARE AND MAINTENANCE

### Troubleshooting

Problem	What to do
System cannot connect to my network	<ul style="list-style-type: none"> <li>• Make sure your network password is correct.</li> <li>• Move the system closer to the wireless router.</li> <li>• Stop any other audio or video streaming.</li> <li>• Close the setup application, disconnect the system from your computer and AC power, and start the setup again. Refer to “Getting Started” on page 7.</li> <li>• If you continue to experience Wi-Fi® connection problems, contact Bose customer service.</li> </ul>
System audio is dropping out	<ul style="list-style-type: none"> <li>• Point the system in a different direction, or move it a few feet to a new location.</li> <li>• Move the system away from possible sources of interference, such as microwaves and cordless phones.</li> <li>• Move the system closer to the wireless router.</li> <li>• Stop any other audio or video streaming.</li> </ul>
No sound	<ul style="list-style-type: none"> <li>• Make sure system has power (AC or optional battery).</li> <li>• Make sure the system has a Wi-Fi connection.</li> <li>• Make sure the system and the AirPlay compatible device are connected to the same network.</li> <li>• Make sure your AirPlay compatible device is playing and the volume is turned up.</li> <li>• Make sure the system is not muted.</li> <li>• Increase the system volume.</li> <li>• Remove power (AC or optional battery) for one minute and then reapply it.</li> <li>• If using the optional battery, make sure it is adequately charged.</li> <li>• Perform a factory reset (page 20).</li> </ul>
The Wi-Fi indicator is flashing red	<ul style="list-style-type: none"> <li>• System error. Contact Bose customer service.</li> </ul>

### Contacting Customer Service

For questions about the SoundLink® Air system, contact your local Bose® dealer. To contact Bose directly, see the contact list on the Quick Start Guide.

## CARE AND MAINTENANCE

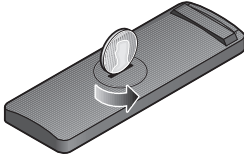
# Replacing the remote battery

When the remote stops operating or its range seems reduced, it is time to change the remote battery.

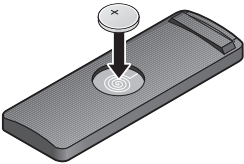
**WARNING:** Keep the remote control battery away from children. It may cause a fire or chemical burn if mishandled. Do not recharge, disassemble, heat above 100°C (212°F), or incinerate. Dispose of used batteries promptly. Replace only with a battery of the correct type and model number.

**WARNING:** Danger of explosion if battery is incorrectly replaced. Replace only with an agency-approved (e.g., UL) CR2032 or DL2032 3-volt lithium battery.

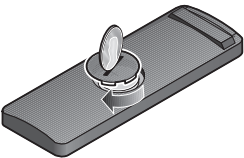
1. Using a coin, turn the battery cover slightly counterclockwise.



2. Remove the cover and insert the new battery (CR2032 or DL2032) flat side up, with the + symbol in view.



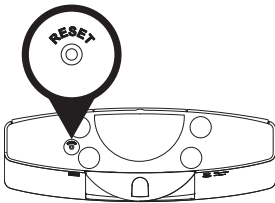
3. Reseat the cover and turn it clockwise to lock into place.



## Alternate setup method

Using this method you can set up the SoundLink Air System by first joining its own built-in wireless network and then connecting to your home wireless network.

1. Place the SoundLink Air system near your computer/mobile device.
2. Make sure there are no cables or power connected to the SoundLink Air system.
3. Connect the SoundLink Air system to power (refer to “Connecting the system to power” on page 7) and wait 30 seconds.
4. Press and hold the **Reset** button on the bottom of the SoundLink Air System for at least two seconds until the Wi-Fi indicator turns solid amber.

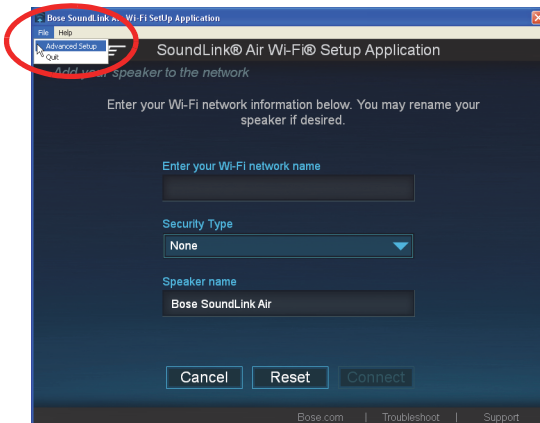


5. Wait for an audio tone (after approximately 30 seconds) before proceeding.
6. Using your computer/mobile device, turn on Wi-Fi and connect to the “Bose SoundLink Air Network.”
7. Open a browser and type: <http://192.168.1.1>.
8. Follow the onscreen instructions.

## Configuring your network manually

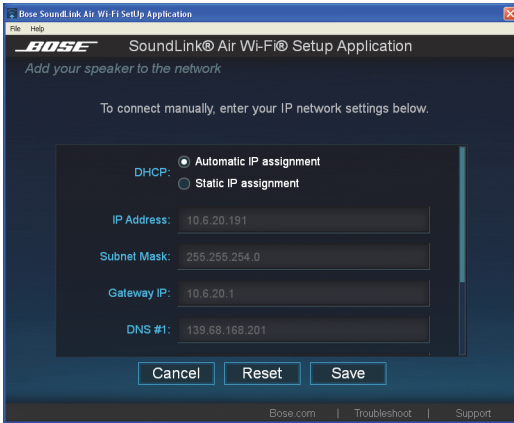
To manually configure your network or change the settings:

1. Select **Advanced Configuration** from the File menu.



## CARE AND MAINTENANCE

### 2. Enter or change the settings.



- **DHCP** – Sets the IP assignment to either Automatic or Static
- **IP Address** – Host IP address
- **Subnet Mask** – Subnet within the IP address for your network
- **Gateway IP** – IP address of a router that serves as an access point for another router
- **DNS #1 IP** – IP address for your #1 Domain Name Server
- **DNS #2 IP** – IP address for your #2 Domain Name Server
- **Proxy Server** – Address used for making an indirect network connection
- **Proxy Port** – Specifies the port to connect to the proxy

3. Click **Save**. A progress dialog is displayed followed by a confirmation dialog box.

4. Click **Close**.

## Turning on/off Wi-Fi® capability

Your SoundLink® Air has built-in Wi-Fi capability that enables wireless connectivity and AirPlay. If you would like to turn off Wi-Fi, press and hold the Play/Pause button on the remote for 10 seconds until the Wi-Fi indicator turns off.

To turn on Wi-Fi, press and hold the Play/Pause button on the remote for 10 seconds until the Wi-Fi indicator starts blinking.



---

## Updating system software

---

Software updates sometimes become available to improve the performance of your system. The following is the *preferred* method for installing software updates.

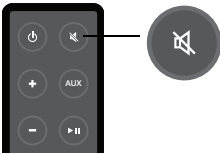
---

**Note:** For another software update method, see "Alternate update method" on page 18.

---

### Software update procedure

1. Make sure your SoundLink Air system is connected to your Wi-Fi® network and that there is an Internet connection. The front panel Wi-Fi indicator (📶) should be solid blue.
2. On the remote, press and hold **Mute** for 10 seconds while watching the front panel Wi-Fi indicator.



- If the Wi-Fi indicator double-blinks green twice, you can release the **Mute** button:  
The system software is up to date and the system returns to the previous operating mode.
- If the Wi-Fi indicator starts quickly blinking green, release the **Mute** button:

A software update is necessary and the software starts downloading. The Wi-Fi indicator continues blinking until the download is finished. While the software update is installed, the Wi-Fi indicator glows solid green for three seconds followed by a double blink. This pattern repeats until the installation is finished. At the end of the installation, the system emits a tone and automatically restarts. After restart, the system will automatically connect to your Wi-Fi network again.

---

**CAUTION:** Do not remove power from the SoundLink Air system while updating the system software.

---

---

**Note:** If the Wi-Fi indicator starts blinking red, a system error has occurred. Contact Bose Customer Service for assistance.

---

## CARE AND MAINTENANCE

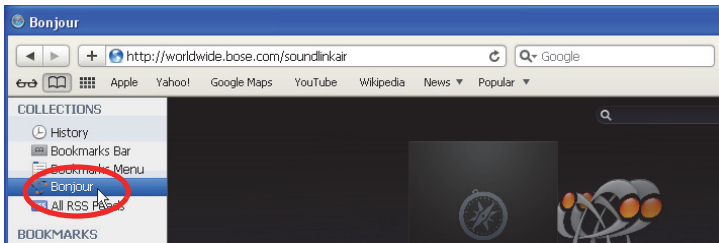
### Alternate update method

This procedure will work on either a Mac or Windows computer providing it has the Safari browser installed on its hard drive.

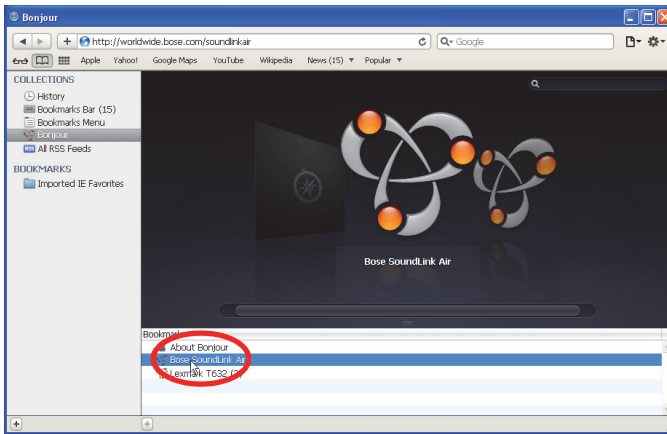
1. Make sure your SoundLink Air system is connected to your Wi-Fi network.
2. On your computer, open Safari and go to: <http://worldwide.bose.com/soundlinkair>
3. In the upper right corner of Safari, click **Bookmarks**.



4. Under **Collections**, click **Bonjour**.



5. In the **Bonjour** bookmarks, open (double-click) **Bose SoundLink Air**.



6. On the lower left, click **Update**.
7. Follow the onscreen instructions.

## CARE AND MAINTENANCE

### Optional battery (not included)

You can purchase a battery to add portability to your SoudLink® Air system. Contact your local authorized Bose® dealer or visit [www.Bose.com](http://www.Bose.com) for assistance. To contact Bose by phone, refer to the contact list on the Quick Start Guide.

To install the battery, follow the instructions included with the battery.

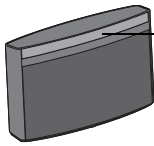
**WARNING:** Only use a genuine battery from Bose or an authorized Bose dealer. Bose cannot warrant the safety and compatibility or assure the operability of batteries from other manufacturers for use in operating the SoundLink Air digital music system.


**CAUTION:** The battery needs to be fully charged before using the Wi-Fi setup application or performing a system update when running on battery power. These functions will fail if the battery has insufficient power.

**Note:** After 30 minutes of no activity when on battery power, the system automatically switches to standby and does not maintain a Wi-Fi connection. Press any system button to turn power on again.

### Battery status indicator


The battery status indicator on the front panel tells you when you need to charge the battery.

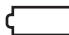


 Flashing red: .....20% or less of full charge remaining (charging needed)

A fully charged battery provides approximately three hours of use if the SoundLink Air system is set to maximum volume. However, the rate of battery discharge varies with the type of music played and the volume setting. You can extend the battery operating time significantly by lowering the volume.

### Manual battery check

The battery indicator is normally off to conserve battery power. To check the charge level, press and hold the remote Power button  and observe the indicator color.

 Green: .....70% or more of full charge  
Amber: .....20% to 70% of full charge  
Flashing red: .....20% or less (charging needed)

**Note:** The battery should be replaced if the battery status indicator remains yellow after 10 hours of charging or the amount of time you can operate on battery power decreases significantly.

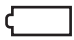
## CARE AND MAINTENANCE

### Battery protection mode

If the battery is not being charged and the SoundLink Air system is unused for more than 14 days, it enters battery protection mode to preserve battery power. To reactivate your SoundLink Air system, connect the power supply to the system and charge the battery.

### Charging the battery

To charge the battery, plug the power supply into a live AC outlet and plug the cord into the DC POWER connector on the back panel of the SoundLink Air system. Recommended charging time is 10 hours. The battery indicator will turn off when the battery is fully charged.

 Amber: .....Battery charging  
Off: .....Charging cycle done

### Packing the power supply for traveling

Wind the cord into the groove around the top of the power supply. Slide the small round ball along the cord as needed to press it into the channel.



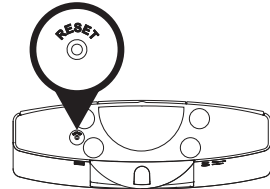
## Performing a factory reset

**A factory reset clears all source, volume, and network settings from the SoundLink Air system and returns it to its original factory settings.**

To reset your system, press and hold the **Reset** button on the bottom panel for 10 seconds.

When reset is complete the Wi-Fi indicator will blink amber.

To reconnect with your Wi-Fi network, run the Wi-Fi setup application again.



**CARE AND MAINTENANCE**

---

## Limited warranty information

---

Your SoundLink Air system is covered by a limited warranty. Details of the limited warranty are provided on the product registration card that is included in the carton. Please refer to the card for instructions on how to obtain warranty service and register your product. Failure to register will not affect your limited warranty rights.

---

## Technical information

---

**Power supply rating:** Input: 100-240V $\sim$  50-60Hz, 1.3A  
Output: 20V  $\text{---}$ , 2A

**Size and weight:** 6 $\frac{3}{4}$ "H x 12 $\frac{1}{16}$ "W x 4 $\frac{1}{16}$ "D (17.5 cm x 30.7 cm x 10.3 cm)  
4.67 lb (2.4 kg)



352050-0010

***BOSE***<sup>®</sup>  
*Better sound through research*<sup>®</sup>

©2012 Bose Corporation, The Mountain,  
Framingham, MA 01701-9168 USA  
AM352050 Rev.00