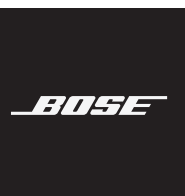


Owner's Guide
Guía del usuario
Notice d'utilisation
使用者指南

DRAFT - 423816



PRODUCT NAME
PRODUCT DESCRIPTION

IMPORTANT SAFETY INSTRUCTIONS

Please read and keep all safety and use instructions.

Important Safety Instructions

1. Read these instructions.
2. Keep these instructions.
3. Heed all warnings.
4. Follow all instructions.
5. Only use attachments/accessories specified by the manufacturer.
6. Unplug this apparatus during lightning storms or when unused for long periods of time.
7. Refer all servicing to qualified personnel. Servicing is required when the apparatus has been damaged in any way, such as power-supply cord or plug is damaged, does not operate normally, or has been dropped.

WARNINGS/CAUTIONS



This product contains magnetic material. Consult your physician on whether this might affect your implantable medical device.

- Keep the product away from fire and heat sources. Do NOT place naked flame sources, such as lighted candles, on or near the product.
- Do NOT make unauthorized alterations to this product.
- Use this product only with an agency approved power supply which meets local regulatory requirements (e.g., UL, CSA, VDE, CCC).
- Do not expose products containing batteries to excessive heat (e.g. from storage in direct sunlight, fire or the like).
- The product label is located on the bottom of the product.

NOTE: This equipment has been tested and found to comply with the limits for a Class B digital device, pursuant to Part 15 of the FCC Rules. These limits are designed to provide reasonable protection against harmful interference in a residential installation. This equipment generates, uses, and can radiate radio frequency energy and, if not installed and used in accordance with the instructions, may cause harmful interference to radio communications. However, there is no guarantee that interference will not occur in a particular installation. If this equipment does cause harmful interference to radio or television reception, which can be determined by turning the equipment off and on, the user is encouraged to try to correct the interference by one or more of the following measures:

- Reorient or relocate the receiving antenna.
- Increase the separation between the equipment and receiver.
- Connect the equipment into an outlet on a circuit different from that to which the receiver is connected.
- Consult the dealer or an experienced radio/TV technician for help.

Changes or modifications not expressly approved by Bose Corporation could void the user's authority to operate this equipment.

This device complies with part 15 of the FCC Rules and with Industry Canada license-exempt RSS standard(s). Operation is subject to the following two conditions: (1) This device may not cause harmful interference, and (2) this device must accept any interference received, including interference that may cause undesired operation.

This device complies with FCC and Industry Canada radiation exposure limits set forth for general population. This transmitter must not be co-located or operating in conjunction with any other antenna or transmitter.

Meets IMDA Requirements.

CE Bose Corporation hereby declares that this product is in compliance with the essential requirements and other relevant provisions of Directive 1999/5/EC and all other EU directive requirements. The complete declaration of conformity can be found at: www.Bose.com/compliance

Management Regulation for Low-power Radio-frequency Devices

Article XII

According to "Management Regulation for Low-power Radio-frequency Devices" without permission granted by the NCC, any company, enterprise, or user is not allowed to change frequency, enhance transmitting power or alter original characteristic as well as performance to an approved low power radio-frequency devices.

Article XIV

The low power radio-frequency devices shall not influence aircraft security and interfere legal communications; If found, the user shall cease operating immediately until no interference is achieved. The said legal communications means radio communications operated in compliance with the Telecommunications Act.

The low power radio-frequency devices must be susceptible with the interference from legal communications or ISM radio wave radiated devices.

REGULATORY INFORMATION

DON'T attempt to remove the rechargeable lithium-ion battery from this product. Contact your local Bose retailer or other qualified professional for removal.



廢電池請回收

Please dispose of used batteries properly, following local regulations. Do not incinerate.



This symbol means the product must not be discarded as household waste, and should be delivered to an appropriate collection facility for recycling. Proper disposal and recycling helps protect natural resources, human health and the environment. For more information on disposal and recycling of this product, contact your local municipality, disposal service, or the shop where you bought this product.



Li-ion Removal of the rechargeable lithium ion battery in this product should be conducted only by a qualified professional. Please contact your local Bose retailer or see <http://products.bose.com/static/compliance/index.html> for further information.



Names and Contents of Toxic or Hazardous Substances or Elements						
Part Name	Toxic or Hazardous Substances and Elements					
	Lead (Pb)	Mercury (Hg)	Cadmium (Cd)	Hexavalent (CR(VI))	Polybrominated Biphenyl (PBB)	Polybrominated diphenylether (PBDE)
PCBs	X	0	0	0	0	0
Metal Parts	X	0	0	0	0	0
Plastic Parts	0	0	0	0	0	0
Speakers	X	0	0	0	0	0
Cables	X	0	0	0	0	0
This table is prepared in accordance with the provisions of SJ/T 11364.						
O: Indicates that this toxic or hazardous substance contained in all of the homogeneous materials for this part is below the limit requirement of GB/T 26572.						
X: Indicates that this toxic or hazardous substance contained in at least one of the homogeneous materials used for this part is above the limit requirement of GB/T 26572.						

Please complete and retain for your records

The serial and model numbers are located on the bottom of the speaker.

Serial number: _____

Model number: _____

Please keep your receipt with your owner's guide. Now is a good time to register your Bose product.

You can easily do this by going to <http://global.bose.com/register>

Date of Manufacture: The eighth digit in the serial number indicates the year of manufacture; “7” is 2007 or 2017.

China Importer: Bose Electronics (Shanghai) Company Limited, Part C, Plan 9, No. 353 North Riyang Road, China (Shanghai) Pilot Free Trade Zone

EU Importer: Bose Products B.V., Gorslaan 60, 1441 RG Purmerend, The Netherlands

Taiwan Importer: Bose Taiwan Branch, 9F-A1, No.10, Section 3, Minsheng East Road, Taipei City 104, Taiwan
Phone Number: +886-2-2514 7676

Mexico Importer: Bose de México, S. de R.L. de C.V. , Paseo de las Palmas 405-204, Lomas de Chapultepec, 11000 México, D.F. Phone Number: 001 800 900 2673

Input Rating: 5V  1A

Charging temperature range: 32° F – 140° F (0° C – 60° C)

Discharging temperature range: -4° F – 158° F (-20° C – 70° C)

Apple, the Apple logo, iPad, iPhone, iPod, and Siri are trademarks of Apple Inc., registered in the U.S. and other countries. App Store is a service mark of Apple Inc. The trademark “iPhone” is used with a license from Aiphone K.K.

Android, Google Now, Google Play, and the Google Play logo are trademarks of Google Inc.

The *Bluetooth*[®] word mark and logos are registered trademarks owned by Bluetooth SIG, Inc. and any use of such marks by Bose Corporation is under license.

“Made for iPod,” “Made for iPhone,” and “Made for iPad” mean that an electronic accessory has been designed to connect specifically to iPod, iPhone, or iPad, respectively, and has been certified by the developer to meet Apple performance standards. Apple is not responsible for the operation of this device or its compliance with safety and regulatory standards. Please note that the use of this accessory with iPod, iPhone, or iPad may affect wireless performance.

The N-Mark is a trademark or registered trademark of NFC Forum, Inc. in the United States and in other countries.

Bose Corporation Headquarters: 1-877-230-5639

©2017 Bose Corporation. No part of this work may be reproduced, modified, distributed or otherwise used without prior written permission.

CONTENTS

Bose® Connect App

What can I do with the Bose® Connect app?.....	8
--	---

What's in the Carton

Contents	9
----------------	---

Speaker Portability

Strap configurations	10
Water resistance.....	10

Speaker Controls

Power on/off	12
Auto-off timer	12
Disable the auto-off timer	12
Speaker functions	13
Media playback and volume functions.....	13
Call functions.....	14
Access voice control.....	15

Battery Charging

Connect the USB cable	16
Hear the battery level.....	16
Battery protection mode	17

Status Indicators

<i>Bluetooth</i> indicator	18
Battery indicators	19

Voice Prompts

Pre-installed languages	20
Change the language	20
Disable voice prompts	20

Bluetooth Connections

Pair your mobile device using the Bose® Connect app (recommended)	21
Choose an alternative pairing method.....	22
Pair using the <i>Bluetooth</i> menu on your mobile device.....	23
Pair using NFC on your mobile device	25
Disconnect a mobile device.....	26
Reconnect a mobile device.....	26

Multiple Bluetooth Connections

Pair an additional mobile device.....	27
Identify connected mobile devices.....	27
Switch between two connected mobile devices.....	27
Reconnect a previously paired mobile device.....	28
Clear the speaker pairing list.....	28

Pair Bose Speakers Together

Pair the speakers using the Bose® Connect app (recommended)	29
Pair the speakers manually	29
Party mode.....	29
Stereo mode	31
Switch between Party mode and Stereo mode.....	31
Disable Party mode or Stereo mode.....	31

Care and Maintenance

Clean the speaker	32
Replacement parts and accessories.....	32
Limited warranty	32

Troubleshooting

Common solutions	33
Reset your speaker.....	35

BOSE® CONNECT APP

Download the Bose® Connect app to keep your software up-to-date, personalize your speaker settings, easily manage *Bluetooth* connections and access new features.

What can I do with the Bose® Connect app?

- Easily connect to and switch between multiple mobile devices with a single swipe.
- Customize your speaker experience:
 - Name your speaker.
 - Select a voice prompt language or disable voice prompts.
 - Adjust the auto-off timer.
- Pair two Bose speakers to play in Party mode or Stereo mode. Refer to the Bose® Connect app for more information about these modes.
- Find answers to frequently asked questions.

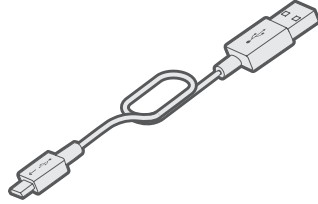


Contents

Confirm that the following parts are included:



<Product name>

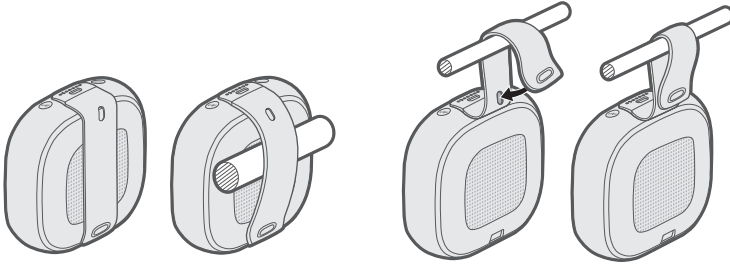


USB cable

Note: If any part of the product is damaged, do not use it. Contact your authorized Bose® dealer immediately or Bose customer service.
Visit: <product specific URL>

Strap configurations

You can adjust the strap to easily transport the speaker. To secure the speaker, attach it to an object, such as a bicycle handlebar or backpack strap.



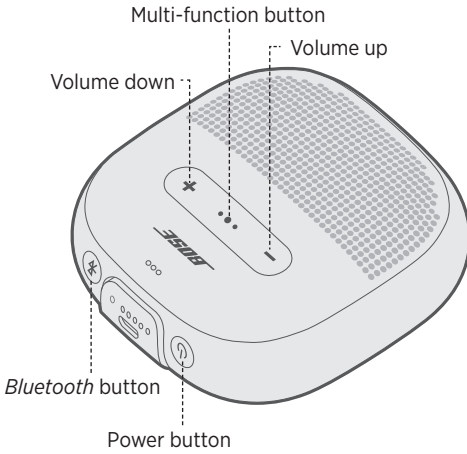
Water resistance

Your speaker is rated IPX7 water resistant and can withstand small splashes of water, showering, rain or snow.

CAUTION: Do NOT swim with this speaker or submerge it in any pool of water deeper than 3.2 ft (1 m).



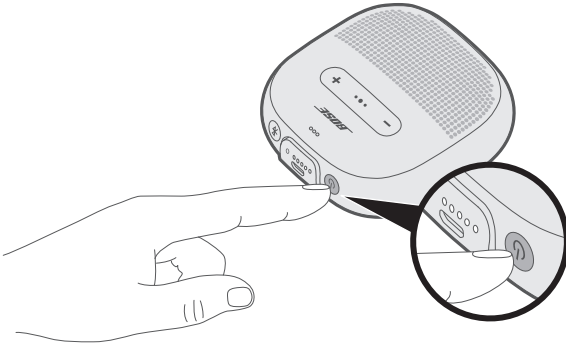
Controls are located on the top and outer edge of the speaker.



Power on/off

Press the Power button .

The battery indicators glow solid white.



Auto-off timer

The auto-off timer conserves the battery when the speaker is operating on battery power. The speaker switches off when audio has stopped and no buttons have been pressed for 30 minutes.

Note: To adjust the time it takes for your speaker to automatically power off, use the Bose® Connect app.

Disable the auto-off timer

Press and hold **+** and the Multi-function button **•••** simultaneously.

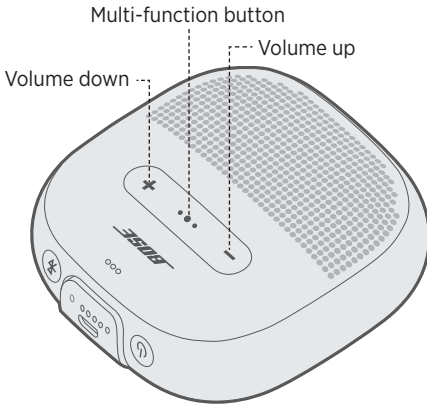
You hear “Auto-off disabled.”

Repeat to re-enable the auto-off timer.

Tip: You can also disable the auto-off timer using the Bose® Connect app.

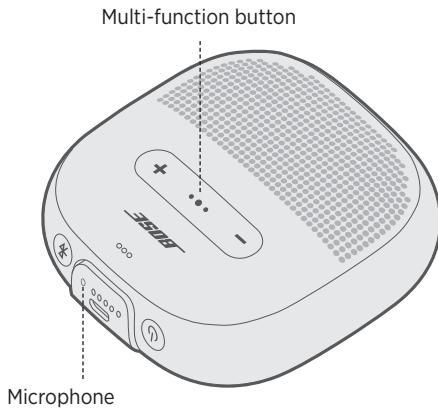
Speaker functions

Media playback and volume functions



Function	What to do
Play/Pause	Press the Multi-function button ●●.
Skip Forward	Press ●● twice quickly.
Skip Backward	Press ●● three times quickly.
Fast forward	Press ●● twice quickly and hold the second press.
Rewind	Press ●● three times quickly and hold the third press.
Volume Up	Press +.
Volume Down	Press -.

Call functions



Function	What to do
Answer a call	Press the Multi-function button ●●●.
End a call	Press ●●●.
Decline an incoming call	Press and hold ●●● for one second.
Answer a second incoming call and put the current call on hold	While on a call, press ●●●.
Decline a second incoming call and stay on current call	While on a call, press and hold ●●● for one second.
Switch between two calls	With two active calls, press ●●● twice quickly.
Create a conference call	With two active calls, press and hold ●●● for one second.
Access voice control to make a call	While not on a call, press and hold ●●● for one second. Your mobile device may not support voice control. Refer to your device owner's guide for more information.
Mute/unmute a call	While on a call, press + and - simultaneously.

Voice prompt notifications

Your speaker identifies incoming callers (when applicable).

To disable this feature, see “Disable voice prompts” on page 20.

Note: Disabling voice prompt notifications also disables voice prompts.

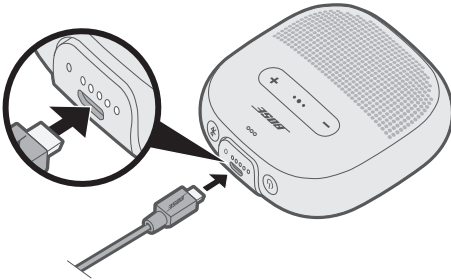
Access voice control

The speaker microphone acts as an extension of the microphone in your mobile device. Using the Multi-function button ●●● on the speaker, you can access the voice control capabilities on your device to make/take calls or ask Siri® or Google Now™ to play music, tell you the weather, give you the score of a game and more.

Press and hold ●●● to access voice control on your device. You hear a tone that indicates voice control is active.

Connect the USB cable

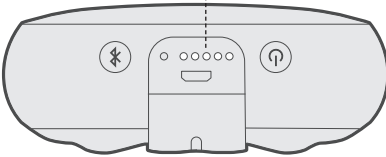
1. Plug the small end of the USB cable into the USB connector.



2. Plug the other end of the USB cable into a wall charger or computer that is powered on.


While charging, the last lit battery indicator blinks white. Allow up to **three** hours to fully charge the battery. When the battery is fully charged, all five battery indicators glow solid white. A full charge powers the speaker for up to **six** hours.


Battery indicators



Hear the battery level

Each time you power on the speaker, a voice prompt announces the battery level. When the speaker is in use, a voice prompt announces if the battery needs to be charged.

To hear the battery charge level while using your speaker, press and hold the Power button  until you hear a voice prompt.

Note: To visually check the battery, press and hold  while viewing the battery indicators (see page 19).

Battery protection mode

When your speaker battery is depleted (0%), or your speaker is unplugged and unused for more than three days with a remaining charge of less than 10 percent, it enters battery protection mode. To reactivate your speaker, connect it to AC (mains) power.

When not in use, store your speaker in a cool place.

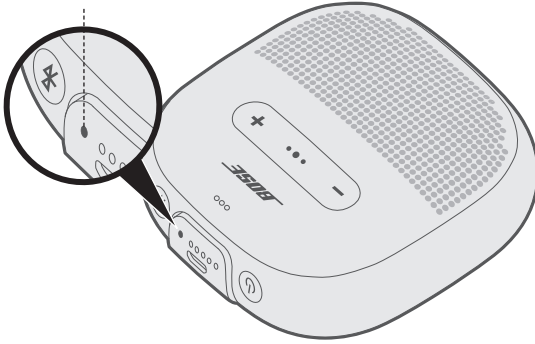
CAUTION: Do not store your speaker for extended periods when fully charged or when the battery indicator blinks red.

STATUS INDICATORS

The *Bluetooth* and battery indicators are located on the outer edge of the speaker.

Bluetooth indicator

Bluetooth indicator



Indicator activity	System state
Blinking blue	Ready to pair
Blinking white	Connecting
Solid white	Connected
Solid blue	Select language


Battery indicators



Battery indicators

Indicator activity	Charging percentage
●○○○○	0% - 20%
●●○○○	20% - 40%
●●●○○	40% - 60%
●●●●○	60% - 80%
●●●●●	80% - 100%

Notes:

- When charging, the last lit battery indicator blinks white. When the speaker is fully charged, all battery indicators glow solid white.
- To visually check the battery level, press and hold the Power button  while viewing the battery indicators.
- If connected to an Apple device, the device displays the speaker battery level near the upper right corner of the screen and in the notification center.

VOICE PROMPTS

Voice prompts guide you through the pairing and connecting processes and announce the battery level. You can customize voice prompts using the buttons on your speaker.

Tip: You can also easily manage multiple connected devices using the Bose® Connect app.

Pre-installed languages

The following languages are pre-installed on your speaker:

- English
- Spanish
- French
- German
- Mandarin
- Cantonese
- Japanese
- Korean
- Arabic
- Italian
- Portuguese
- Swedish
- Dutch
- Danish
- Norwegian
- Finnish
- Russian
- Polish

To check for additional languages

Visit: updates.Bose.com

Change the language

When you power on the speaker for the first time, the voice prompts are in English.

1. Press and hold the Multi-function button **•••** and **+** simultaneously until you hear the voice prompt for the first language option.
2. Press **+** or **-** to move through the list of languages.
3. When you hear your language, press and hold **•••** to select.

Disable voice prompts

Press and hold **+** and **-** simultaneously until you feel a vibration.

Note: Repeat to re-enable voice prompts.

Bluetooth wireless technology lets you stream music from mobile devices such as smartphones, tablets and laptop computers. Before you can stream music from a device, you must pair the device with your speaker.

Pair your mobile device using the Bose® Connect app (recommended)

Download the Bose® Connect app and follow the on-screen connection instructions.



Once paired, you hear “Connected to <mobile device name>,” and the *Bluetooth* indicator glows solid white.

Choose an alternative pairing method

You can pair your mobile device with your speaker using *Bluetooth* wireless technology or Near Field Communication (NFC).


What is NFC?

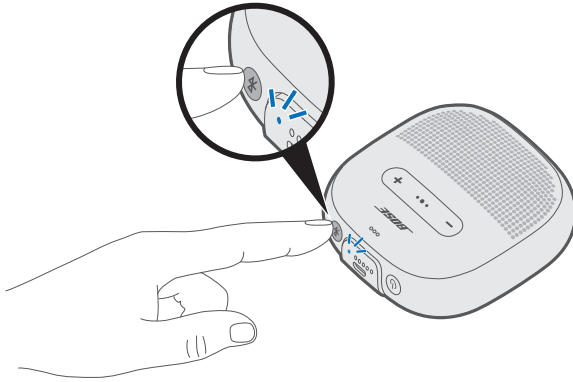
NFC enables a *Bluetooth* connection by simply tapping two devices together. Refer to your device owner's guide to see if your model supports NFC.

If your mobile device does not support <i>Bluetooth</i> pairing via NFC or if you are unsure:	Follow the instructions for "Pair using the <i>Bluetooth</i> menu on your mobile device" on page 23.
If your mobile device supports <i>Bluetooth</i> pairing using NFC:	Follow the instructions for "Pair using NFC on your mobile device" on page 25.

Note: If your device supports *Bluetooth* pairing via NFC, you can use either pairing method.

Pair using the *Bluetooth* menu on your mobile device

1. With your speaker powered on, press and hold the *Bluetooth* button  until you hear "Ready to pair," and the *Bluetooth* indicator blinks blue.

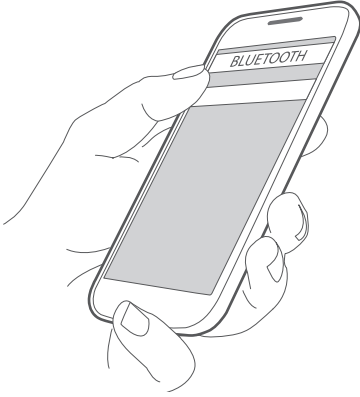


2. On your device, enable the *Bluetooth* feature.

Tip: The *Bluetooth* feature is usually found in the Settings menu.

BLUETOOTH CONNECTIONS

3. Select your speaker from the device list.

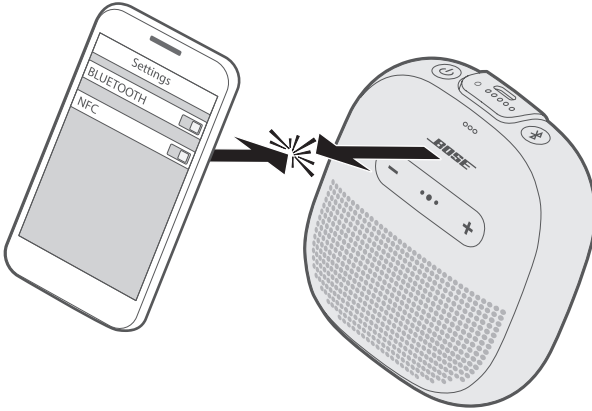


Once paired, you hear “Connected to <mobile device name>,” and the *Bluetooth* indicator glows solid white.

Tip: Look for the name you entered for your speaker in the Bose® Connect app. If you didn’t name your speaker, the default name appears.

Pair using NFC on your mobile device

1. With your speaker powered on, unlock your device and enable the *Bluetooth* and *NFC* features. Refer to your device owner's guide to learn more about these features.
2. Tap the NFC touchpoint on your device to the top of the speaker.
Your device may prompt you to accept pairing.



Once paired, you hear “Connected to <mobile device name>,” and the *Bluetooth* indicator glows solid white.

Disconnect a mobile device

- Disable the *Bluetooth* feature on your device.
- If your device supports NFC, tap the NFC touchpoint on your device to the top of the speaker.

Reconnect a mobile device

- When powered on, the speaker tries to reconnect with the two most recently-connected devices.
Note: The devices must be within range (30 ft. or 9 m) and powered on.
- If your device supports NFC, tap the NFC touchpoint on your device to the left underside of the speaker.

You can pair additional devices to your speaker. These *Bluetooth* connections are controlled with the Multi-function button ●●●.

Note: You cannot use ●●● to pair your mobile device.

Tip: You can also easily manage multiple connected devices using the Bose® Connect app.

Pair an additional mobile device

You can store up to eight paired devices in the speaker pairing list and your speaker can be actively connected to two devices at a time.

To pair an additional device, follow the instructions for your preferred pairing method (see page 21).

Note: You can only play audio from one device at a time.

Identify connected mobile devices

Press ●●● to hear which devices are currently connected.


Switch between two connected mobile devices

1. Pause audio on your first device.
2. Play audio on your second device.

Reconnect a previously paired mobile device

1. Press the Multi-function button ●●● to hear which device is connected.
2. Press ●●● again within three seconds to connect to the next device in the speaker pairing list.
3. Repeat until you hear the correct device name.
4. Play audio on the connected device.

Clear the speaker pairing list

1. Press and hold the *Bluetooth* button  for 10 seconds until you hear “*Bluetooth* device list cleared,” and the *Bluetooth* indicator blinks blue.
2. Delete your speaker from the *Bluetooth* list on your mobile device.
All devices are cleared and the speaker is ready to pair.

You can pair your Bose speakers together to play in the following modes using the Bose® Connect app (recommended) or the speakers' control buttons:

- Party mode (left and right speakers in unison)
- Stereo mode (left speaker and right speaker separate)

Refer to your Bose owner's guide to determine if your secondary speaker supports these modes.



Pair the speakers using the Bose® Connect app (recommended)

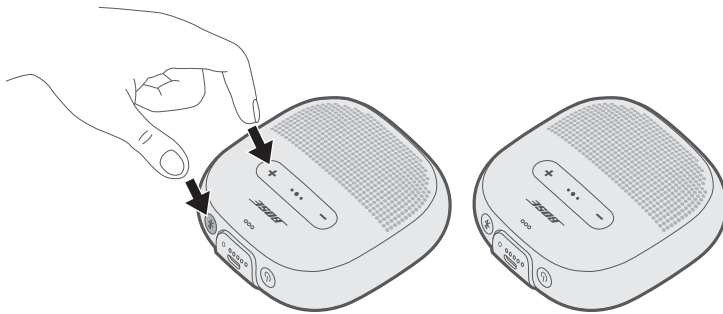
For information about the Bose® Connect app, see page 8.

Pair the speakers manually

If you are unable to access the Bose® Connect app, follow the instructions below.

Party mode

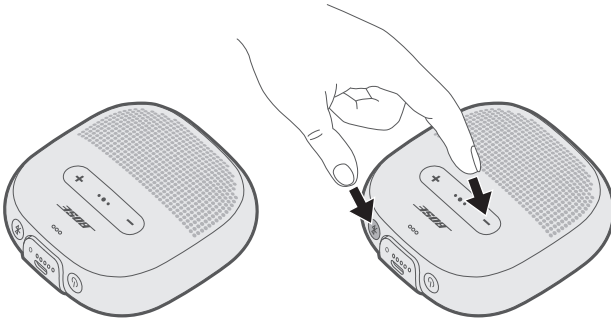
1. Make sure both speakers are powered on.
2. Make sure a speaker is connected to your mobile device.
3. On the speaker connected to your device, press and hold the *Bluetooth* button  and  simultaneously.



4. Release the buttons when you hear "Press the *Bluetooth* and volume down buttons simultaneously on a second Bose device."

PAIR BOSE SPEAKERS TOGETHER

5. On the other speaker, press and hold the *Bluetooth* button  and  simultaneously.



6. Release the buttons when the speaker emits a tone.


After 10 seconds, you hear “Party mode” from both speakers simultaneously. Party mode is enabled. You are now able to play audio in unison using your mobile device.

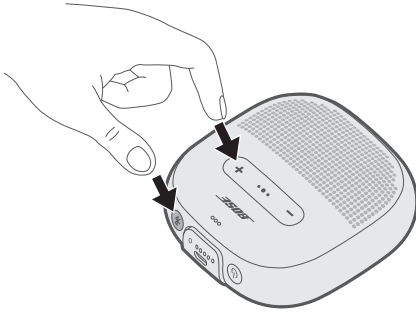
7. For an optimal experience, position your speakers:

- In the same room or outdoor area
- So there are no obstructions between them

Note: Performance may vary based on mobile device, distance and environmental factors.

Stereo mode

1. Configure your speakers for Party mode (see “Party mode” on page 29).
2. On a speaker, press the *Bluetooth* button  and **+** simultaneously.



3. Release the buttons when you hear “Stereo mode.”
You hear “Left” from the left speaker and “Right” from the right speaker.
Stereo mode is enabled. You are now able to play audio in stereo using your mobile device.
4. For an optimal experience, position your speakers:
 - In the same room or outdoor area
 - Within 10 feet of each other, free from obstructions
 - So that your distance to each speaker is equal

Note: Performance may vary based on device, distance and environmental factors.

Switch between Party mode and Stereo mode

On either speaker, press  and **+** simultaneously.

Disable Party mode or Stereo mode

Power off the speaker.

Clean the speaker

Your speaker may require periodic cleaning.

- Clean the surface of the speaker with a soft, damp cloth (water only).
- Do not use any solvents, chemicals, or cleaning solutions containing alcohol, ammonia, or abrasives.
- Do not allow any liquids to spill into any openings.

Replacement parts and accessories

Replacement parts and accessories can be ordered through Bose customer service. Visit: <global.Bose.com/Support/xxxx>

Limited warranty

The speaker is covered by a limited warranty. Details of the limited warranty are provided on the product registration card that is included in the carton. Please refer to the card for instructions on how to register. Failure to register will not affect your limited warranty rights.

The warranty information provided with this product does not apply in Australia and New Zealand. See our website at www.bose.com.au/warranty or www.bose.co.nz/warranty for details of the Australia and New Zealand warranty.

If you experience problems with your speaker:

- Power on the speaker (see page 12).
- Check the state of the status indicators (see page 18).
- Make sure your mobile device supports *Bluetooth* or pairing via NFC technology (see page 22).
- Charge the battery (see page 16).
- Increase the volume on your speaker, device and music app.
- Move your device closer to the speaker and away from any interference or obstruction.
- Try connecting another device (see page 27).



If you could not resolve your issue, see the table below to identify symptoms and solutions to common problems. If you are unable to resolve your issue, contact Bose customer service.

Common solutions

The following table lists symptoms and possible solutions to common problems.

Problem	What to do
No power (battery)	<ul style="list-style-type: none"> • Battery may be in protection mode or discharged. Connect your speaker to AC (mains) power.
Speaker does not pair with mobile device	<ul style="list-style-type: none"> • On your device: <ul style="list-style-type: none"> – Disable and then enable the <i>Bluetooth</i> feature. – Delete your speaker from the <i>Bluetooth</i> list on your device. Pair again (see page 27). • Pair a different device (see page 28). • Visit: <support site> to see how-to videos. • Clear the speaker pairing list (see page 28). Pair again.
Speaker does not pair with NFC	<ul style="list-style-type: none"> • Unlock your device and enable the <i>Bluetooth</i> and NFC features. • Tap the NFC touchpoint on the back of your device to the left underside of the speaker.
Bose speakers do not pair together manually	<ul style="list-style-type: none"> • Download the Bose Connect app for an additional method for pairing your Bose speakers (see page 8). • Your second speaker may not support Stereo or Party mode. Refer to your Bose speaker owner's guide.

TROUBLESHOOTING

Problem	What to do
No sound	<ul style="list-style-type: none">• Make sure voice prompts are on. Press the <i>Bluetooth</i> button  to hear the connected device. Make sure you are using the correct device.• Use a different music source.• Pair a different mobile device (see page 27).• If two devices are connected, pause audio on the first device and play audio on the other device.• If two devices are connected, move the devices within range of the speaker (30 ft. or 9 m).
Poor sound quality	<ul style="list-style-type: none">• Use a different music source.• Pair a different device.• Disconnect the second device.• Disable any audio enhancement features on the device or music app.
Speaker does not charge	<ul style="list-style-type: none">• Make sure the connector on the cable is correctly aligned with the connector on the speaker.• Try another charging source.• Secure both ends of the USB cable.• If your speaker has been exposed to high or low temperatures, let it return to room temperature and then try charging again.• Reset your speaker (see page 35).
Microphone is not picking up sound	<ul style="list-style-type: none">• Make sure the microphone opening on the left side of the speaker is not blocked.• Try another phone call.• Try another compatible device.
Mobile device not responding to button presses	<ul style="list-style-type: none">• For multi-press functions using the Multi-function button , vary speed of presses.• Full controls may not be available for some models.• Try another compatible device.

Reset your speaker

Factory reset clears paired devices and language settings from your speaker and returns it to the original factory settings.

1. Power on your speaker.
2. Press and hold the Multi-function button ●●● and ─ simultaneously for 10 seconds, until the *Bluetooth* indicator glows blue, and you hear a voice prompt to select a language (see page 21).

Lea y conserve todas las instrucciones de uso y seguridad.

Instrucciones importantes de seguridad

1. Lea estas instrucciones.
2. Conserve estas instrucciones.
3. Tenga en cuenta las advertencias.
4. Siga todas las instrucciones.
5. Use solamente los accesorios especificados por el fabricante.
6. Desenchufe este aparato durante tormentas eléctricas o cuando no lo utilice durante períodos de tiempo prolongados.
7. Derive todas las tareas de servicio a personal calificado. Se requiere reparar el equipo cuando el cable de la fuente de alimentación o el enchufe esté dañado, no funcione correctamente o se ha caído.

ADVERTENCIAS/PRECAUCIONES



Este producto contiene material magnético. Consulte con su médico si esto podría afectar a un dispositivo médico implantable.

- Mantenga el producto lejos del fuego y de fuentes de calor. NO coloque sobre el producto, o en su proximidad, fuentes de llamas al descubierto, como velas encendidas.
- NO realice alteraciones no autorizadas a este producto.
- Use este producto solamente con una fuente de alimentación aprobada por la agencia que cumpla con las reglamentaciones (p. ej. UL, CSA, VDE, CCC).
- No exponga productos con batería al calor excesivo (por ejemplo, almacenar a la luz directa del sol, cerca de fuego o similar).
- La etiqueta del producto se encuentra en la parte inferior del producto.

NOTA: Este equipo ha sido sometido a prueba y se ha comprobado que cumple con los límites de un dispositivo digital Clase B, conforme a la Parte 15 de las reglas de la FCC. Estos límites están diseñados para ofrecer una protección razonable contra la interferencia perjudicial en una instalación domiciliaria. Este equipo genera, usa y puede irradiar energía de radiofrecuencia y, si no se instala y se usa conforme a las instrucciones, puede causar una interferencia perjudicial a las comunicaciones de radio. Sin embargo, no se garantiza que la interferencia no se produzca en una instalación en particular. Si este equipo causa interferencias perjudiciales en la recepción de radio o televisión, que se puede determinar al apagar y encender el equipo, se aconseja al usuario intentar corregir la interferencia mediante una o más de las siguientes medidas:

- Reoriente o reubique la antena receptora.
- Aumente la separación entre el equipo y el receptor.
- Conecte el equipo a una salida eléctrica en un circuito diferente al que está conectado el receptor.
- Consulte con el distribuidor o con un técnico en radio o televisión experimentado para obtener ayuda.

Los cambios o las modificaciones no aprobadas expresamente por Bose Corporation podrían invalidar la autoridad del usuario para operar el equipo.

Este dispositivo cumple con la parte 15 de las reglas de la FCC y con las normas RSS sin licencia de la Industry Canada. El funcionamiento está sujeto a las siguientes dos condiciones: (1) Este dispositivo no debe provocar interferencias dañinas y (2) Este dispositivo debe aceptar cualquier interferencia recibida, incluida la interferencia que puede causar un funcionamiento no deseado.

Este dispositivo cumple con los límites de exposición a la radiación de la FCC y de la Industry Canada establecidos para la población en general. Este transmisor no se debe ubicar ni operar conjuntamente con ninguna otra antena o transmisor.

Cumple con los requisitos IMDA.

CE Por la presente, Bose Corporation declara que este producto cumple con los requisitos esenciales y con otras cláusulas relevantes de la Directiva 1999/5/EC y con todos los demás requisitos de directivas de la UE. La declaración de conformidad completa se puede encontrar en www.Bose.com/compliance

Normas de gestión para dispositivos de radiofrecuencia de baja potencia

Artículo XII

Según la "Regulación de administración para dispositivos de radiofrecuencia de bajo consumo" sin el permiso concedido por la NCC, cualquier empresa, compañía o usuario no puede cambiar la frecuencia, mejorar la potencia de transmisión ni alterar las características originales así como el desempeño de los dispositivos de radiofrecuencia de bajo consumo.

Artículo XIV

Los dispositivos de radiofrecuencia de baja potencia no deberían afectar la seguridad del avión ni interferir con las comunicaciones legales; si se determinara una interferencia, el usuario deberá dejar de operar de inmediato hasta que no se perciba interferencia. Dichas comunicaciones legales significan comunicaciones de radio operadas conforme con la Ley de telecomunicaciones.

Los dispositivos de radiofrecuencia de baja potencia deben ser susceptibles a la interferencia de las comunicaciones legales o de los dispositivos de ondas de radio ISM.

INFORMACIÓN REGULATORIA

NO intente quitar la batería de ion-litio recargable de este producto. Contacte al distribuidor local de Bose u otro profesional calificado para quitar la batería.



Deseche correctamente las baterías usadas, cumpliendo con las reglamentaciones locales. No incinere.

廢電池請回收



Este símbolo significa que el producto no debe desecharse como residuo doméstico y debe entregarse a un centro de recolección apropiado para reciclado. La eliminación y el reciclado adecuados ayudan a proteger los recursos naturales, la salud de las personas y el medioambiente. Para obtener más información sobre la eliminación y el reciclado de este producto, póngase en contacto con su municipio, el servicio de gestión de residuos o el comercio donde haya comprado este producto.

Li-ion



La extracción de la batería de iones de litio recargable de este producto debe ser realizada por un profesional calificado. Póngase en contacto con el distribuidor Bose de su zona o vea <http://products.bose.com/static/cumplimiento//index.html> para información adicional.



Nombres y contenidos de las sustancias o elementos tóxicos o peligrosos						
Nombre de parte	Sustancias y elementos tóxicos o peligrosos					
	Plomo (pb)	Mercurio (Hg)	Cadmio (Cd)	Hexavalente	Bifenilo polibromado (PBB)	Difeniléter polibromado (PBDE)
PCB	X	0	0	0	0	0
Partes metálicas	X	0	0	0	0	0
Partes plásticas	0	0	0	0	0	0
Altavoces	X	0	0	0	0	0
Cables	X	0	0	0	0	0
Esta tabla se preparó conforme a las cláusulas de SJ/T 11364.						
O: Indica que esta sustancia tóxica o peligrosa contenida en todos los materiales homogéneos para esta parte es inferior al requisito de límite de GB/T 26572.						
X: Indica que esta sustancia tóxica o peligrosa que está presente en al menos uno de los materiales homogéneos utilizados para esta parte se encuentra por encima del requisito de límite de GB/T 26572.						

Complete y conserve para su registro

Los números de serie y de modelo se encuentran en la parte inferior del altavoz.

Número de serie: _____

Número de modelo: _____

Guarde el recibo con la guía del usuario. Ahora es un buen momento para registrar su producto Bose. Puede hacerlo fácilmente visitando <http://global.Bose.com/register>

Fecha de fabricación: El octavo dígito del número de serie indica el año de fabricación; "7" es 2007 ó 2017.

Importador en China: Bose Electronics (Shanghai) Company Limited, Part C, Plan 9, No. 353 North Riyang Road, China (Shanghai) Pilot Free Trade Zone

Importador en UE: Bose Products B.V., Gorslaan 60, 1441 RG Purmerend, Países Bajos

Importador en Taiwán: Sucursal de Bose en Taiwán, 9F-A1, No.10, Section 3, Minsheng East Road, Taipei City 104, Taiwán
Número de teléfono: +886-2-25147676

Importador en México: Bose de México, S. de R.L. de C.V., Paseo de las Palmas 405-204, Lomas de Chapultepec, 11000 México, D.F. Número de teléfono: 001 800 900 2673

Potencia de entrada: 5V  1A

Rango de temperatura de carga: 0° C – 60° C

Rango de temperatura de descarga: -20° C – 70° C

Apple, el logotipo de Apple, iPad, iPhone, iPod y Siri son marcas registradas de Apple Inc., registradas en los Estados Unidos y en otros países. App Store es una marca de servicio de Apple Inc. La marca comercial "iPhone" se usa con una licencia de Aiphone K.K.

Android, Google Now, Google Play y el logotipo de Google Play son marcas registradas de Google Inc.

La marca y los logotipos de *Bluetooth*® son marcas comerciales registradas propiedad de Bluetooth SIG Inc. y cualquier uso de dichas marcas por parte de Bose Corporation se encuentra bajo licencia.

"Made for iPod", "Made for iPhone" y "Made for iPad" significa que se ha diseñado un accesorio electrónico para conectar específicamente a iPod, iPhone, o iPad, respectivamente, y ha sido certificado por el desarrollador para cumplir con los estándares de desempeño de Apple. Apple no es responsable por el funcionamiento de este dispositivo o su cumplimiento con estándares regulatorios y de seguridad. Observe que el uso de este accesorio con iPod, iPhone o iPad puede afectar el desempeño inalámbrico.

La marca N-Mark es una marca comercial o marca comercial registrada de NFC Forum, Inc. en los Estados Unidos de América y en otros países.

Sede central de Bose Corporation: 1-877-230-5639

©2017 Bose Corporation. No se puede reproducir, modificar, distribuir, o usar de otra manera ninguna parte de este trabajo sin previo consentimiento por escrito.

CONTENIDO

Aplicación Bose® Connect

¿Qué puedo hacer con la aplicación Bose® Connect?.....	8
--	---

En la caja

Contenido	9
-----------------	---

Portabilidad del altavoz

Configuración de la correa.....	10
Resistencia al agua.....	10

Controles del altavoz

Encender/apagar.....	12
Temporizador de apagado automático.....	12
Desactivar el temporizador de apagado automático	12
Funciones del altavoz.....	13
Funciones de reproducción multimedia y volumen.....	13
Funciones de llamadas	14
Acceder al control de voz.....	15

Cargar la batería

Conectar el cable USB.....	16
Escuchar el nivel de carga de la batería	16
Modo de protección de la batería.....	17

Indicadores de estado

Indicador <i>Bluetooth</i>	18
Indicadores de la batería	19

Indicaciones de voz

Idiomas preinstalados	20
Cambio del idioma	20
Desactive las indicaciones de voz.....	20

Conexiones *Bluetooth*

Emparejar el dispositivo móvil usando la aplicación Bose® Connect (recomendado).....	21
Elegir un método de emparejamiento alternativo.....	22
Emparejar usando la función <i>Bluetooth</i> en su dispositivo móvil.....	23
Emparejar usando NFC en su dispositivo móvil.....	25
Desconectar un dispositivo móvil.....	26
Volver a conectar un dispositivo móvil.....	26

Múltiples conexiones *Bluetooth*

Emparejar otro dispositivo móvil.....	27
Identificar dispositivos móviles conectados.....	27
Cambiar entre dos dispositivos móviles conectados.....	27
Reconectar un dispositivo móvil previamente emparejado.....	28
Borrar la lista de emparejamiento del altavoz.....	28

Emparejar los altavoces Bose a la vez

Emparejar los altavoces con la aplicación Bose® Connect (recomendada).....	29
Emparejar los altavoces de forma manual.....	29
Modo Fiesta.....	29
Modo Estéreo.....	31
Cambiar entre el modo Fiesta y el modo Estéreo.....	31
Deshabilitar el modo Fiesta o el modo Estéreo.....	31

Cuidado y mantenimiento

Limpiar el altavoz.....	32
Repuestos y accesorios.....	32
Garantía limitada.....	32

Solución de problemas

Soluciones comunes.....	33
Restaurar el altavoz.....	35

APLICACIÓN BOSE® CONNECT

Descargue la aplicación Bose® Connect para mantener el software actualizado, personalizar la configuración del altavoz, manejar fácilmente las conexiones *Bluetooth* y acceder a las nuevas funciones.

¿Qué puedo hacer con la aplicación Bose® Connect?

- Conecte y cambie fácilmente entre múltiples dispositivos móviles con un solo toque.
- Personalice la funcionalidad del altavoz:
 - Asigne un nombre al altavoz.
 - Seleccione un idioma para las indicaciones de voz o desactive las indicaciones de voz.
 - Ajuste el temporizador de apagado automático.
- Empareje dos altavoces Bose para reproducir en modo Fiesta o modo Estéreo. Consulte la aplicación Bose® Connect para más información sobre estos modos.
- Encuentre las respuestas a las preguntas frecuentes.

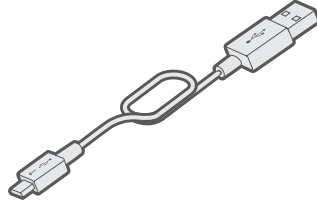


Contenido

Confirme que estén incluidas las siguientes partes:



<Product name>

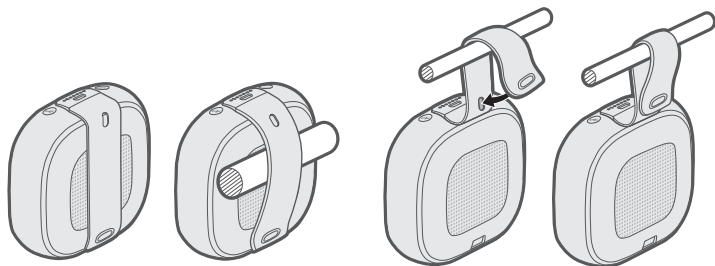


Cable USB

Nota: Si cualquier parte del producto está dañada, no lo use. Comuníquese con un representante autorizado de Bose® de inmediato o al Servicio al cliente de Bose. Visite: <product specific URL>

Configuración de la correa

Puede ajustar la correa para transportar el altavoz con facilidad. Para asegurar el altavoz, ajústelo a un objeto, como el manillar de una bicicleta o la correa de una mochila.



Resistencia al agua

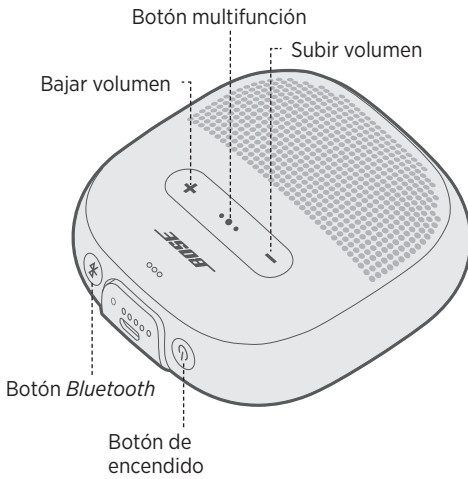
El altavoz tiene clasificación de resistencia al agua IPX7 y admite salpicaduras de agua, ducha, lluvia o nieve.

PRECAUCIÓN: NO nade con este altavoz ni lo sumerja en una piscina de agua de más de 1 m de profundidad.



CONTROLES DEL ALTAVOZ

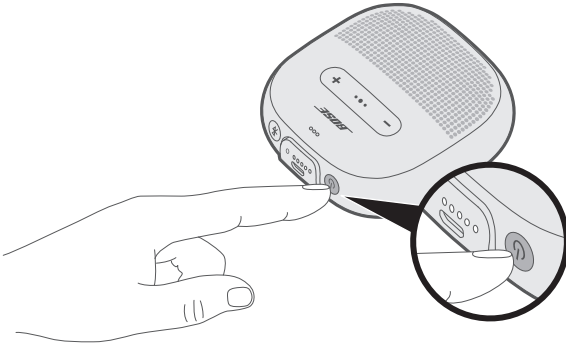
Los controles se encuentran en el borde superior y exterior del altavoz.



Encender/apagar

Presione el botón de encendido .

Los indicadores de la batería se iluminan de color blanco.



Temporizador de apagado automático

El temporizador de apagado automático ahorra la batería cuando el altavoz funciona con la batería. El altavoz se apaga cuando se detiene el audio y no se presionaron botones por 30 minutos.

Nota: Para ajustar el tiempo que tarda el altavoz en apagarse automáticamente, use la aplicación Bose® Connect.

Desactivar el temporizador de apagado automático

Mantenga presionado **+** y el botón Multifunción **•••** simultáneamente.

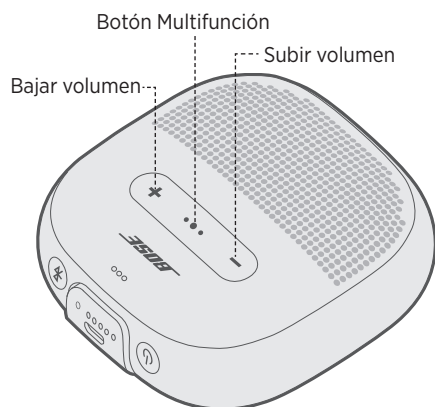
Escuchará “Desactivación de apagado automático”.

Repita para volver a activar el temporizador de apagado automático.

Sugerencia: También puede desactivar el temporizador de apagado automático mediante la aplicación Bose® Connect.

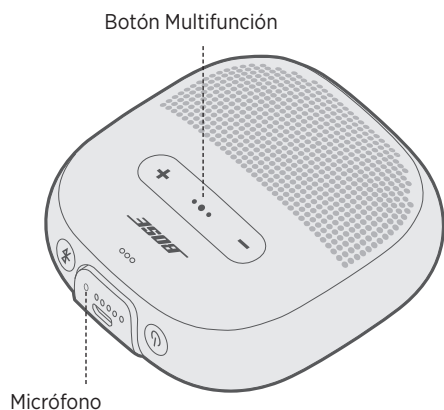
Funciones del altavoz

Funciones de reproducción multimedia y volumen



Función	Qué hacer
Reproducir/Pausa	Presione el botón Multifunción ●●●.
Saltar adelante	Presione ●●● dos veces.
Saltar atrás	Presione ●●● tres veces rápidamente.
Avanzar	Presione ●●● dos veces rápidamente y mantenga presionado la segunda vez.
Retroceder	Presione ●●● tres veces rápidamente y mantenga presionado la tercera vez.
Subir volumen	Presione +.
Bajar volumen	Presione -.

Funciones de llamadas



Función	Qué hacer
Contestar una llamada	Presione el botón Multifunción ●●●.
Finalizar una llamada	Presione ●●●.
Rechazar una llamada entrante	Mantenga presionado ●●● durante un segundo.
Contestar una segunda llamada entrante y poner la llamada en curso en espera.	Durante una llamada, presione ●●●.
Rechazar la segunda llamada entrante y continuar con la llamada en curso.	Durante una llamada, mantenga presionado ●●● por un segundo.
Cambiar entre dos llamadas	Con dos llamadas en curso, presione ●●● dos veces rápidamente.
Crear una llamada conferencia	Con dos llamadas en curso, mantenga presionado ●●● por un segundo.
Acceder al control de voz para hacer una llamada	Sin ninguna llamada en curso, mantenga presionado ●●● por un segundo. Es posible que el dispositivo móvil no sea compatible con el control de voz. Consulte la guía del usuario del dispositivo para obtener más información.
Silenciar/restaurar el audio de una llamada	Durante una llamada, presione + y - simultáneamente.

Avisos de indicaciones de voz

Su altavoz identifica las llamadas entrantes (según corresponda).

Para desactivar esta función, vea “Desactive las indicaciones de voz” en la página 20.

Nota: Si desactiva los avisos de las indicaciones de voz también desactiva las indicaciones de voz.

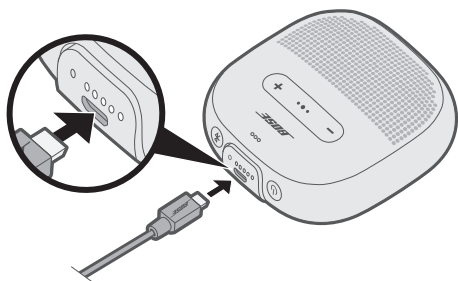
Acceder al control de voz

El micrófono del altavoz actúa como una extensión del micrófono en el dispositivo móvil. Con el botón multifunción ●●● en el altavoz, puede acceder a las prestaciones de control de voz en su dispositivo para hacer/responder llamadas o pedir a Siri® o Google Now™ que reproduzca música, informe sobre el tiempo, le de los resultados de un partido, entre otras cosas.

Mantenga presionado ●●● para acceder al control de voz en su dispositivo. Oye un tono que indica que el control de voz está activo.

Conectar el cable USB

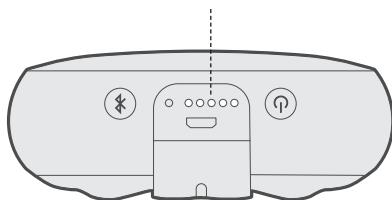
1. Conecte el extremo pequeño del cable USB al conector USB.



2. Conecte el otro extremo del cable USB al cargador de pared o en la computadora que está encendida.

Mientras se carga, el último indicador de la batería iluminado parpadea de color blanco. Espere **tres** horas para cargar completamente la batería. Cuando la batería está totalmente cargada, los cinco indicadores de la batería se iluminan de color blanco. Con una carga completa, el altavoz dura hasta **seis** horas.


Indicadores de la batería



Escuchar el nivel de carga de la batería

Cada vez que enciende el altavoz, las indicaciones de voz anuncian el nivel de carga de la batería. Cuando el altavoz está en uso, las indicaciones de voz anuncian si la batería necesita cargarse.

Para escuchar el nivel de carga de la batería mientras usa el altavoz, mantenga presionado el botón de encendido  hasta que oiga una indicación de voz.

Nota: Para verificar visualmente la carga de la batería, mantenga presionado  mientras verifica los indicadores de la batería (vea la página 19).

Modo de protección de la batería

Cuando la batería del altavoz está descargada (0%), o el altavoz está desenchufado y sin usar por más de tres días con una carga restante de menos del 10 por ciento, entra en el modo de protección de la batería. Para reactivar el altavoz, conéctelo a la red eléctrica de CA.

Cuando no esté en uso, almacene el altavoz en un lugar fresco.

PRECAUCIÓN: No almacene su altavoz durante períodos prolongados si está completamente cargado o cuando el indicador de la batería parpadea en rojo.