

START HERE

The Bose logo is displayed in white, italicized, uppercase letters on a black rectangular background.

HEARPHONES™

CONVERSATION-ENHANCING HEADPHONES

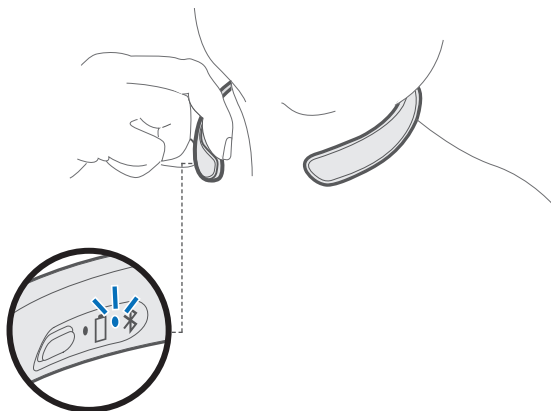
Please read and keep all safety and use instructions.

1



Download the **Bose® Hear** app.

2



Press the Power/*Bluetooth*® button.

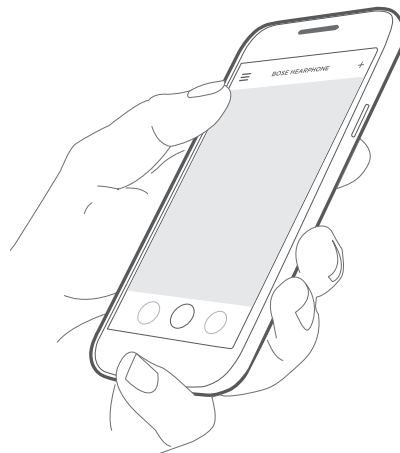
When the *Bluetooth* indicator blinks blue, you hear
“Battery <number> percent. Ready to pair.”

3

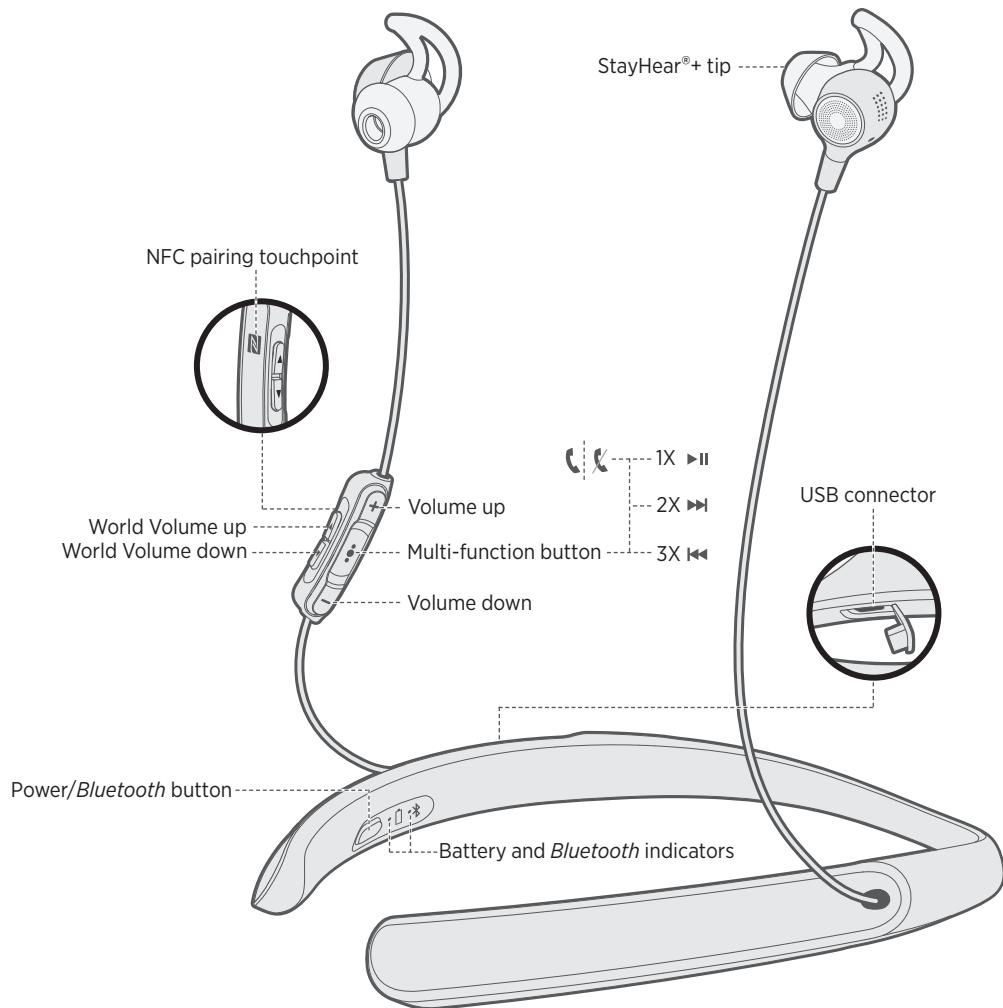


1. On your mobile device, turn on the *Bluetooth* feature.
2. Using the **Bose® Hear** app, pair your mobile device.
Once paired, you hear “Connected to <device name>.” The *Bluetooth* indicator glows solid white.

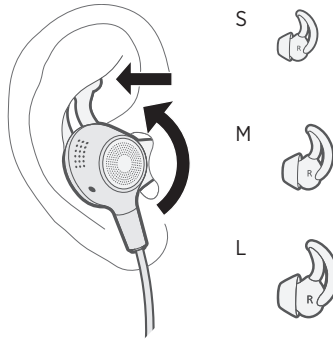
4



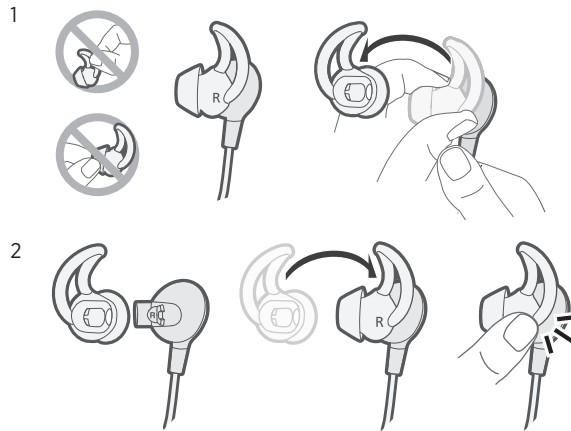
Adjust conversation-enhancement settings only accessible through the **Bose Hear** app.

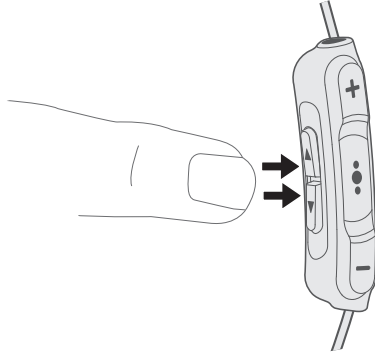


Fitting the earbuds



Changing the StayHear®+ tips



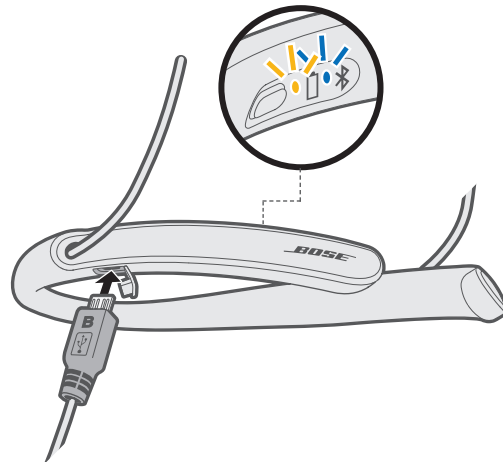








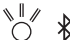
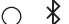
Press ▲ and ▼ simultaneously to focus on sounds coming from different areas in your environment.

Focused (low tone): Focus on a conversation with someone in a noisy environment.

Front (medium tone): Concentrate on a conversation with multiple people.

Everywhere (high tone): Hear sounds from all directions.



-  Full charge
-  Low charge
-  Need to charge
-  Charging
-  Charging error
-  Ready to pair
-  Connecting
-  Connected



global.Bose.com/Support/Hearphones
Bose customer service: 800-761-2673



Please read and keep all safety and use instructions.

Refer to the owner's guide (online) for more information about your Bose® Headphones™ (including accessories and replacement parts).

WARNINGS/CAUTIONS:

- Use caution and follow applicable laws regarding mobile phone and headphone use if using the headphones for calls while driving. Some jurisdictions impose specific limitations, such as single earpiece configuration, on the use of such products while driving. Do NOT use the headphones for any other purpose while driving.
- Do NOT use the headphones with World Volume below 0 or with "Focused" or "Front" microphone directivity selected whenever the inability to hear surrounding sounds may present a danger to yourself or others (for example, while riding a bicycle or walking in or near traffic, a construction site or railroad tracks).
 - Where appropriate, adjust the headphones to ensure you can hear surrounding sounds, including alarms and warning signals.
 - Be aware of how sounds that you rely on as reminders or warnings may vary in character when using the headphones.
 - Be aware that it may be more difficult to identify where a sound is coming from when using the headphones, particularly in "Focused" or "Front" directivity.
- Do NOT use the headphones at a high volume for any extended period.
 - To avoid hearing damage, use your headphones at a comfortable, moderate volume level.
 - Turn the volume down on your device before placing the headphones in/on your ears, then turn the volume up gradually until you reach a comfortable listening level.
- Do NOT use the headphones if they emit any loud unusual noise. If this happens, turn the headphones off and contact Bose® customer service.
- Do NOT submerge or expose the headphones for extended period to water, or wear while participating in water sports, e.g., swimming, waterskiing, surfing, etc.
- Remove headphones immediately if you experience a warming sensation or loss of audio.



Contains small parts which may be a choking hazard. Not suitable for children under age 3.



This product contains magnetic material. Consult your physician on whether this might affect your implantable medical device.

- Do NOT make unauthorized alterations to this product.
- Use this product only with an agency approved power supply which meets local regulatory requirements (e.g., UL, CSA, VDE, CCC).
- Do NOT expose products containing batteries to excessive heat (e.g. from storage in direct sunlight, fire or the like).

Regulatory Information

This is not a hearing instrument or hearing aid as defined in the Hearing Instrument Consumer Protection Act of Illinois, but a personal amplifier and not intended to replace a properly fitted and calibrated hearing instrument.


Note: This equipment has been tested and found to comply with the limits for a Class B digital device, pursuant to Part 15 of the FCC Rules. These limits are designed to provide reasonable protection against harmful interference in a residential installation. This equipment generates, uses, and can radiate radio frequency energy and, if not installed and used in accordance with the instructions, may cause harmful interference to radio communications. However, there is no guarantee that interference will not occur in a particular installation. If this equipment does cause harmful interference to radio or television reception, which can be determined by turning the equipment off and on, the user is encouraged to try to correct the interference by one or more of the following measures:

- Reorient or relocate the receiving antenna.
- Increase the separation between the equipment and receiver.
- Connect the equipment into an outlet on a circuit different from that to which the receiver is connected.
- Consult the dealer or an experienced radio/TV technician for help.

Changes or modifications not expressly approved by Bose Corporation could void the user's authority to operate this equipment.

This device complies with part 15 of the FCC Rules. Operation is subject to the following two conditions: (1) This device may not cause harmful interference, and (2) this device must accept any interference received, including interference that may cause undesired operation.

This device complies with FCC and Industry exposure limits set forth for general population. This transmitter must not be co-located or operating in conjunction with any other antenna or transmitter.

Input Rating: 5V  1A



Date of Manufacture: The eighth digit in the serial number indicates the year of manufacture; "6" is 2006 or 2016.

Android, Google Play and the Google Play logo are trademarks of Google Inc.

Apple, the Apple logo, iPad, iPhone, and iPod are trademarks of Apple Inc., registered in the U.S. and other countries. App Store is a service mark of Apple Inc. The trademark "iPhone" is used with a license from Apple Inc. K.K.

The *Bluetooth*® word mark and logos are registered trademarks owned by Bluetooth SIG, Inc. and any use of such marks by Bose Corporation is under license.

The N-Mark is a trademark or registered trademark of NFC Forum, Inc. in the United States and in other countries.

"Made for iPod," "Made for iPhone," and "Made for iPad" mean that an electronic accessory has been designed to connect specifically to iPod, iPhone, or iPad, respectively, and has been certified by the developer to meet Apple performance standards. Apple is not responsible for the operation of this device or its compliance with safety and regulatory standards. Please note that the use of this accessory with iPod, iPhone or iPad may affect wireless performance.

©2016 Bose Corporation. No part of this work may be reproduced, modified, distributed or otherwise used without prior written permission.



785819-0010

BOSE

©2016 Bose Corporation, The Mountain,
Framingham, MA 01701-9168 USA
AM785819 Rev. 00