

BRADFORD WHITE  
WHOLESALE  
COMMERCIAL  
PRICE SCHEDULE

EFFECTIVE DATE  
FEBRUARY 11, 2019



# What American Strong means to Bradford White.



**American Pride has always been in everything we do.** Bradford White began over 135 years ago with a simple vision, to deliver high quality, superior products made by American craftspeople.

**We are committed to American manufacturing.** We are an American-owned company, with all our manufacturing facilities located in the United States. Bradford White proudly employs over 1,500 people at our American facilities.

**We proudly support the professional.** At Bradford White, we focus on the professional. Our quality product deserves a quality installation.

**American Strong...around the world.** Bradford White products are available to professionals around the world. For example, our Halton Hills, ON sales, training and distribution center provides full support to our Canadian customers.

**Built to be the Best™.** Bradford White proudly brings American ingenuity and quality to customers around the world. By combining American Strong manufacturing with select components and products sourced from top international partners, the result is all Bradford White products are Built to be the Best™ - now and in the future.

# Index

|   |                          |
|---|--------------------------|
| <b>Terms of Sale</b> .....  | <b>3</b>                 |
| ■ General Information   | ■ Parts                  |
| ■ Freight Policy  | ■ Return Material Policy |
| <b>Warranty Information</b> .....                                       | <b>4</b>                 |
| <b>New Model Number Naming Structure</b> .....                          | <b>5</b>                 |
| <b>Commercial Gas Models</b>  |                          |
| Light Duty Atmospheric Vent High Input Models .....                     | <b>7</b>                 |
| Light Duty Commercial High Efficiency eF Series® Power Vent Model ..... | <b>8</b>                 |
| Light Duty Power Vent (TTW®) Models .....                               | <b>8</b>                 |
| Light Duty Power Direct Vent Models .....                               | <b>8</b>                 |
| Light Duty Direct Vent Models .....                                     | <b>9</b>                 |
| Light Duty Ultra Low NOx Atmospheric Vent High Input Models .....       | <b>9</b>                 |
| Light Duty Ultra Low NOx Direct Vent Models .....                       | <b>10</b>                |
| Light Duty Ultra Low NOx Power Vent (TTW®) Models .....                 | <b>10</b>                |
| Light Duty Ultra Low NOx Power Direct Vent Models .....                 | <b>10</b>                |
| Commander Series™ Atmospheric Vent Models .....                         | <b>11</b>                |
| Electronic Ignition Models .....  | <b>12</b>                |
| Induced Draft Models .....  | <b>13</b>                |
| Millivolt Models .....  | <b>13</b>                |
| eF Series® Ultra High Efficiency Models .....                           | <b>14-15</b>             |

|   |              |
|---|--------------|
| <b>Commercial Electric Models</b>                   |              |
| ElectriFLEX LD™ (Light Duty) Upright .....          | <b>16-17</b> |
| ElectriFLEX LD™ (Light Duty) Lowboy .....           | <b>16-17</b> |
| ElectriFLEX LD™ (Light Duty) Utility .....          | <b>18</b>    |
| ElectriFLEX LD™ (Light Duty) Wall Hung .....        | <b>18</b>    |
| ElectriFLEX MD™ (Medium Duty) .....                 | <b>19</b>    |
| ElectriFLEX HD™ (Heavy Duty) .....                  | <b>20-22</b> |
| ASME Models .....                                   | <b>23-24</b> |
| Brute® Vertical Round .....                         | <b>25-28</b> |
| <b>Commercial Indirect-Fired</b>                    |              |
| PowerStor Series™ Single-Wall Indirect Models ..... | <b>29</b>    |
| <b>Commercial Storage Tank</b>                      |              |
| Large Volume Storage Tank Models .....              | <b>30-35</b> |

BLUE SHADED HEADERS INDICATE PRODUCTS THAT ARE NET AND NOT SUBJECT TO PERFORMANCE INCENTIVE PROGRAM.

YELLOW SHADED AREAS INDICATE PRODUCTS INTRODUCED IN THIS PRICE SCHEDULE.

## Terms of Sale

### ■ GENERAL INFORMATION

1. This price schedule does not constitute an offer to sell. All orders are subject to final approval and acceptance. **Prices, terms and specifications are subject to change without notice.** Billing prices are those in effect on the date of order entry for immediate shipment only.
2. **All shipments are F.O.B. shipping point.** Under such F.O.B. terms, the beneficial and legal title to, ownership of, right to possession of, control over and risk of loss and damage to the goods shall pass to Customer at the F.O.B. shipping point upon Seller's tender of the goods for delivery to Customer or a common carrier. For purposes of this Agreement, delivery of the goods includes tendering the goods to be loaded into the transportation unit of the Customer or common carrier located on Seller's property.
3. **Terms 2% 10th prox. Net 30th prox. origin.**
4. All gas water heaters are design certified by CSA International (formerly AGA and CGA) in accordance with ANSI Z21.10.1 or 10.3 latest edition. Closed combustion manufactured home heaters are listed by Underwriters Laboratories.
5. All electric water heaters are listed by Underwriters Laboratories and/or Intertek (ETL).
6. Please specify type of gas, element wattages, phase, and voltages when ordering.

### ■ PARTS

#### (Standard stock Shipments)

All parts orders under **\$500.00** net will be shipped prepaid and charged F.O.B. shipping point. Parts orders totaling **\$500.00** or more net will be shipped F.F.A.

**"Surface"**. We reserve the right to ship by the carrier of our choice.

Water heater replacement parts that are defective will be replaced free of charge (exclusive of freight charges) within 1 year of purchase. The return must be accompanied by a receipt providing date of purchase and statement of defect.

### ■ FREIGHT POLICY

**The following terms apply to shipment of orders to one destination. Commercial heaters each have a unit value of one. 150 or more units to one destination qualify for a \$3.00 per unit truckload allowance.**

**Large Volume Storage Tanks are excluded from this freight policy. These units are shipped prepaid and charged F.O.B. shipping point. No freight allowed.**

**1 to 3 units** - Shipped prepaid, full freight allowed, plus **\$75.00** per unit handling charge. The per unit handling charge is for factory and rep warehouse orders. This applies to both shipments and pick-ups.

**4 or more units** - Shipped prepaid, full freight allowed, no handling charge.

### COMBINED HEATER FREIGHT TERMS

Handling charge for commercial heaters is waived if order is accompanied by a residential order of 50 or more pieces shipping to the same destination.

**Power Lift Gate Charge .....\$125.00**

**Special LTL Packaging Charge.....\$75.00 per unit**

### ■ RETURN MATERIAL POLICY

No merchandise may be returned for credit until written authorization has been received from Bradford White Corporation. When so returned (provided the equipment is saleable, unused, no more than six months old based on manufacturing date and in original carton), it must be returned freight prepaid, and will be subject to a minimum 15% re-stocking charge. Custom built Commercial Electric product cannot be returned for credit. All merchandise returned without authorization will be refused and returned to the customer with any incurred expenses being charged back to the customer.

**Any product not manufactured by Bradford White cannot be returned for credit.**

# Warranty Information

|   | Limited Tank<br>Warranty | Limited Parts<br>Warranty |  | Limited Tank<br>Warranty | Limited Parts<br>Warranty |
|---|--------------------------|---------------------------|--|--------------------------|---------------------------|
| <b>Commercial Gas Models</b>  |                          |                           | <b>Commercial Electric Models</b>                                |                          |                           |
| Light Duty Atmospheric Vent High Input Models .....                         | 3 year                   | 1 Year                    | ElectriFLEX LD™ (Light Duty) Upright.....                        | 3 year                   | 1 Year                    |
| Light Duty Power Vent (TTW®) Models .....                                   | 3 year                   | 1 Year                    | ElectriFLEX LD™ (Light Duty) Lowboy.....                         | 3 year                   | 1 Year                    |
| Light Duty Power Direct Vent Models.....                                    | 3 year                   | 1 Year                    | ElectriFLEX LD™ (Light Duty) Utility .....                       | 3 year                   | 1 Year                    |
| Light Duty Direct Vent Models.....  | 3 year                   | 1 Year                    | ElectriFLEX LD™ (Light Duty) Wall Hung .....                     | 3 year                   | 1 Year                    |
| Light Duty Ultra Low NOx Atmospheric Vent High Input Models.....            | 3 year                   | 1 Year                    | ElectriFLEX MD™ (Medium Duty).....                               | 3 year                   | 1 Year                    |
| Light Duty Ultra Low NOx Direct Vent Models .....                           | 3 year                   | 1 Year                    | ElectriFLEX HD™ (Heavy Duty) .....                               | 3 year                   | 1 Year                    |
| Light Duty Commercial High Efficiency eF Series® Power Vent Model... 3 year | 1 Year                   | 1 Year                    | Surface Mounted & Immersion Thermostat (Heavy Duty) Models ..... | 3 year                   | 1 Year                    |
| Light Duty Ultra Low NOx Power Vent (TTW®) Models .....                     | 3 year                   | 1 Year                    | ASME Models.....   | 3 year                   | 1 Year                    |
| Light Duty Ultra Low NOx Power Direct Vent Models .....                     | 3 year                   | 1 Year                    | Brute™ Vertical Round.....                                       | 3 year                   | 1 Year                    |
| Commander Series™ Atmospheric Vent Models.....                              | 3 year                   | 1 Year                    | <b>Commercial Indirect-Fired</b>                                 |                          |                           |
| Electronic Ignition Models .....  | 3 year                   | 1 Year                    | PowerStor Series® Single-Wall Indirect Models .....              | 3 year                   | 1 Year                    |
| Induced Draft Models.....   | 3 year                   | 1 Year                    | <b>Commercial Storage Tank</b>                                   |                          |                           |
| Millivolt Models.....   | 3 year                   | 1 Year                    | M3ST Models (80,120,200).....                                    | 5 year                   | 1 Year                    |
| eF Series® Ultra High Efficiency Models.....                                | 3 year                   | 1 Year                    | Custom Models.....   | Varies by tank lining    |                           |

Some states do not allow limitations on warranties. See copy of the Warranty included with the heater. \*Heat Exchanger Only \*\*10 year parts warranty on warranty upgrade kit models only. †Heater Body Element Assembly.

# Warranty Extension Commercial Products Only

## ASME Electric

|            |          |
|------------|----------|
| 6A .....   | \$255.00 |
| 12A .....  | \$255.00 |
| 20A .....  | \$255.00 |
| 30A .....  | \$434.00 |
| 40A .....  | \$434.00 |
| 50A .....  | \$434.00 |
| 80A .....  | \$829.00 |
| 120A ..... | \$829.00 |

## Commander Series™

|                             |          |
|-----------------------------|----------|
| UCG-80H-125-3(N,X)* .....   | \$342.00 |
| UCG-80H-125-3(N,X)A* .....  | \$464.00 |
| UCG-80H-199-3(N,X)* .....   | \$447.00 |
| UCG-80H-199-3(N,X)A* .....  | \$536.00 |
| UCG-80H-270-3(N,X)* .....   | \$562.00 |
| UCG-80H-270-3(N,X)A* .....  | \$613.00 |
| UCG-80H-399-3(N,X)* .....   | \$783.00 |
| UCG-80H-399-3(N,X)A* .....  | \$839.00 |
| UCG-100H-199-3(N,X)* .....  | \$447.00 |
| UCG-100H-199-3(N,X)A* ..... | \$567.00 |
| UCG-100H-270-3(N,X)* .....  | \$509.00 |
| UCG-100H-270-3(N,X)A* ..... | \$598.00 |
| UCG-100H-399-3N .....       | \$733.00 |
| UCG-100H-399-3NA .....      | \$773.00 |

## HD Immersion Electrics

|                |          |
|----------------|----------|
| CEHD50 .....   | \$365.00 |
| CEHD50A .....  | \$393.00 |
| CEHD80 .....   | \$365.00 |
| CEHD80A .....  | \$393.00 |
| CEHD120 .....  | \$365.00 |
| CEHD120A ..... | \$393.00 |

## Light Duty Electric

|                |          |
|----------------|----------|
| LE16U3 .....   | \$113.00 |
| LE110U3 .....  | \$113.00 |
| LE112T3 .....  | \$113.00 |
| LE115U3 .....  | \$113.00 |
| LE120L3 .....  | \$113.00 |
| LE120U3 .....  | \$113.00 |
| LE130L3 .....  | \$113.00 |
| LE140L3 .....  | \$113.00 |
| LE150L3 .....  | \$113.00 |
| LE230S3 .....  | \$126.00 |
| LE240S3 .....  | \$126.00 |
| LE250S3 .....  | \$126.00 |
| LE265T3 .....  | \$126.00 |
| LE280T3 .....  | \$126.00 |
| LE2120T3 ..... | \$126.00 |

|                |          |
|----------------|----------|
| LE16WV3 .....  | \$113.00 |
| LE112WV3 ..... | \$113.00 |
| LE120WV3 ..... | \$113.00 |

## D-Series

|                           |          |
|---------------------------|----------|
| D-38T-155-3(N,X)* .....   | \$354.00 |
| D-65T-370-3(N,X)* .....   | \$491.00 |
| D-65T-370-3(N,X)A* .....  | \$580.00 |
| D-65T-399-3N .....        | \$613.00 |
| D-65T-399-3NA .....       | \$704.00 |
| D-65T-625-3(N,X)* .....   | \$809.00 |
| D-65T-625-3(N,X)A* .....  | \$829.00 |
| D-75T-125-3(N,X)* .....   | \$278.00 |
| D-75T-160-3(N,X)* .....   | \$354.00 |
| D-75T-300-3(N,X)* .....   | \$437.00 |
| D-75T-300-3(N,X)A* .....  | \$525.00 |
| D-80L-399-3(N,X)* .....   | \$613.00 |
| D-80L-399-3(N,X)A* .....  | \$704.00 |
| D-80L-450-3(N,X)* .....   | \$690.00 |
| D-80L-450-3(N,X)A* .....  | \$766.00 |
| D-80L-505-3(N,X)* .....   | \$690.00 |
| D-80L-505-3(N,X)A* .....  | \$766.00 |
| D-80T-180-3(N,X)* .....   | \$365.00 |
| D-80T-199-3(N,X)* .....   | \$367.00 |
| D-80T-250-3(N,X)* .....   | \$392.00 |
| D-80T-250-3(N,X)A* .....  | \$483.00 |
| D-80T-425-3(N,X)* .....   | \$467.00 |
| D-80T-425-3(N,X)A* .....  | \$525.00 |
| D-80T-505-3(N,X)* .....   | \$467.00 |
| D-80T-505-3(N,X)A* .....  | \$525.00 |
| D-80T-725-3(N,X)* .....   | \$822.00 |
| D-80T-725-3(N,X)A* .....  | \$853.00 |
| D-100L-199-3(N,X)* .....  | \$375.00 |
| D-100L-250-3(N,X)* .....  | \$416.00 |
| D-100L-250-3(N,X)A* ..... | \$508.00 |
| D-100L-270-3N .....       | \$428.00 |
| D-100L-270-3NA .....      | \$522.00 |
| D-100L-300-3(N,X)* .....  | \$437.00 |
| D-100L-300-3(N,X)A* ..... | \$525.00 |
| D-100S-199-3(N,X)* .....  | \$375.00 |
| D-100S-250-3(N,X)* .....  | \$416.00 |
| D-100S-250-3(N,X)A* ..... | \$508.00 |
| D-100T-199-3(N,X)* .....  | \$375.00 |
| D-100T-250-3(N,X)* .....  | \$416.00 |
| D-100T-250-3(N,X)A* ..... | \$508.00 |
| DM-80T-199-3N .....       | \$387.00 |
| DM-100T-199-3N .....      | \$398.00 |

## eF Series®

|                          |          |
|--------------------------|----------|
| EF60T125E3(N,X)* .....   | \$315.00 |
| EF60T125E3(N,X)A* .....  | \$404.00 |
| EF60T150E3(N,X)* .....   | \$448.00 |
| EF60T150E3(N,X)A* .....  | \$557.00 |
| EF60T199E3(N,X)* .....   | \$515.00 |
| EF60T199E3(N,X)A* .....  | \$630.00 |
| EF100T150E3(N,X)* .....  | \$428.00 |
| EF100T150E3(N,X)A* ..... | \$527.00 |
| EF100T199E3(N,X)* .....  | \$439.00 |
| EF100T199E3(N,X)A* ..... | \$538.00 |
| EF100T250E3(N,X)* .....  | \$497.00 |
| EF100T250E3(N,X)A* ..... | \$591.00 |
| EF100T300E3(N,X)* .....  | \$567.00 |
| EF100T300E3(N,X)A* ..... | \$667.00 |
| EF120T4003(N)* .....     | \$618.00 |
| EF120T4003(N)A* .....    | \$715.00 |
| EF120T5003(N)* .....     | \$713.00 |
| EF120T5003(N)A* .....    | \$784.00 |

## Ultra Low Nox Light Duty Gas

|                         |          |
|-------------------------|----------|
| ULG250H553N .....       | \$139.00 |
| ULG275H763N .....       | \$169.00 |
| ULG2100H853N .....      | \$199.00 |
| ULG2DV50H453N-FLX ..... | \$217.00 |
| ULG2DV50H453N-OLY ..... | \$217.00 |
| ULG2DV50H453N-SLD ..... | \$217.00 |
| ULG2PDV50H503N .....    | \$219.00 |
| ULG2PV50H563N .....     | \$239.00 |
| ULG2PV75H763N .....     | \$202.00 |

## Light Duty Gas

|                             |          |
|-----------------------------|----------|
| LC2PV50H763(N,X)* .....     | \$278.00 |
| LG1PV55H783(N,X)* .....     | \$228.00 |
| LG2PV50H653(N,X)* .....     | \$206.00 |
| LG2PV75H763(N,X)* .....     | \$169.00 |
| LG250H653(N,X)* .....       | \$103.00 |
| LG255H803(N,X)* .....       | \$103.00 |
| LG275H763(N,X)* .....       | \$147.00 |
| LG2100H853(N,X)* .....      | \$182.00 |
| LG2DV50H503(N,X)*-FLX ..... | \$184.00 |
| LG2DV50H503(N,X)*-OLY ..... | \$184.00 |
| LG2DV50H503(N,X)*-SLD ..... | \$184.00 |
| LG2PDV50H603(N,X)* .....    | \$197.00 |
| LG2PDV75H803(N,X)* .....    | \$197.00 |

## Medium Duty Electrics

|                   |          |
|-------------------|----------|
| E32-50S3-3 .....  | \$283.00 |
| E32-80R3-3 .....  | \$283.00 |
| E32-120R3-3 ..... | \$283.00 |

### How to change model number when ordering five year warranty product!

Change the **3** to a **5**

Examples:

EF100T199E**3**N to EF100T199E**5**N

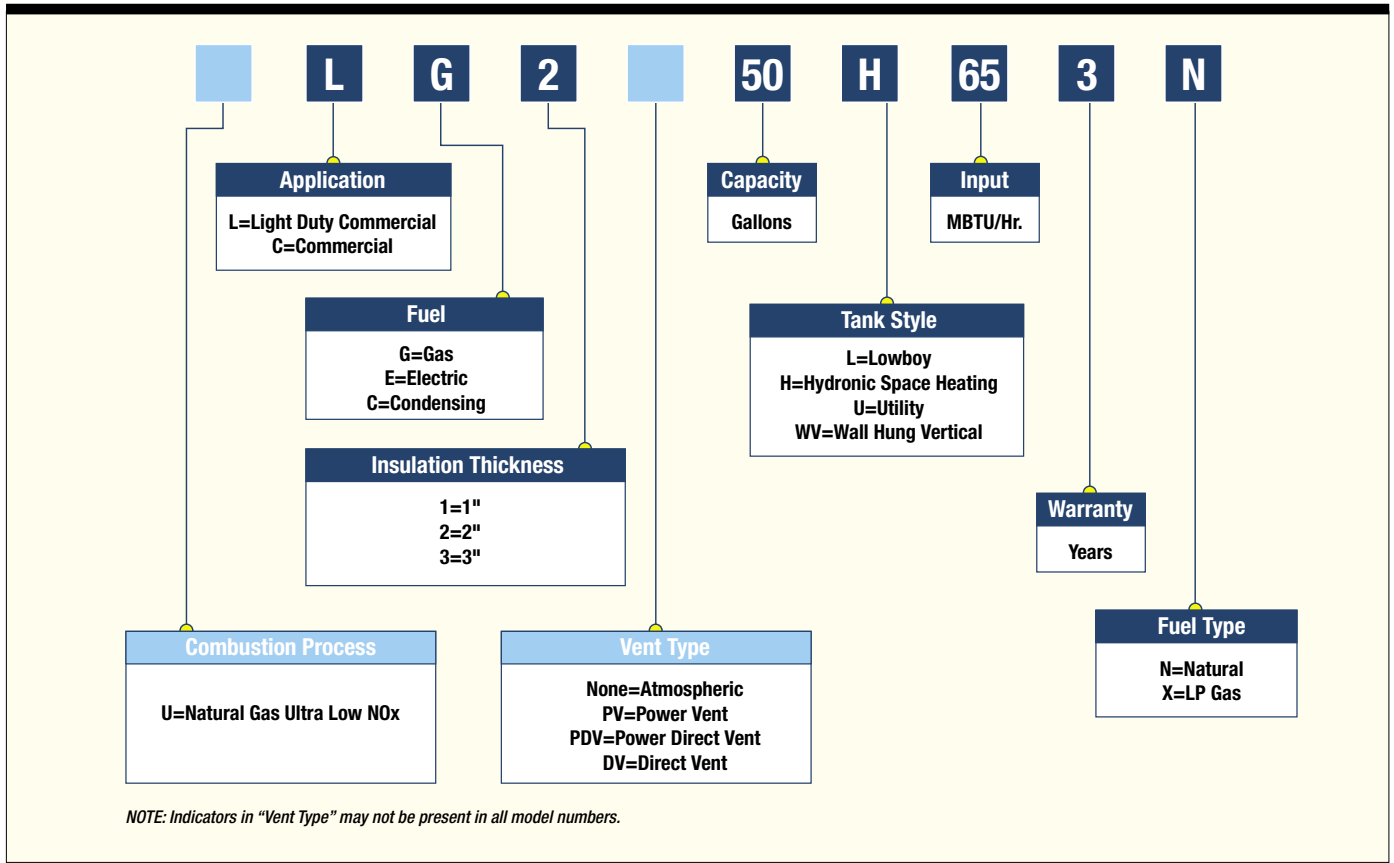
D-75T-125-**3**N to D-75T-125-**5**N

## Warranty Options

- \*\*N = Natural Gas, "X" = Propane, A = ASME
- Extends standard three year tank warranty to five year
- Parts warranty remains at one year when upgrading to five year tank warranty
- To ship five year warranty product from plant, in lieu of upgrading to five year product, use invoice cost for three year warranty product plus warranty increase upgrade cost!
- Use CEHD equivalent gallon product to upgrade MII products

# Model Number Naming Structure

## Light Duty Commercial Model Number Structure





Built to be the Best™



Bradford White **FIND A PRO** Contractor Directory

# HELP HOMEOWNERS FIND YOUR PRO CUSTOMERS!

Our contractor directory has been updated and improved to add valuable new features - and we want your professional customers to be on it! Encourage your contractor customers to put their business listing on the **Bradford White FIND A PRO** directory today and they'll:

- **Get Great New Features**

Expanded profiles, customer reviews, ability to upload project photos, list certifications, industry associations and more.

- **Attract More Customers**

New expanded profile will help contractors stand out more and promote their business.

- **Grow Their and *Your* Business**

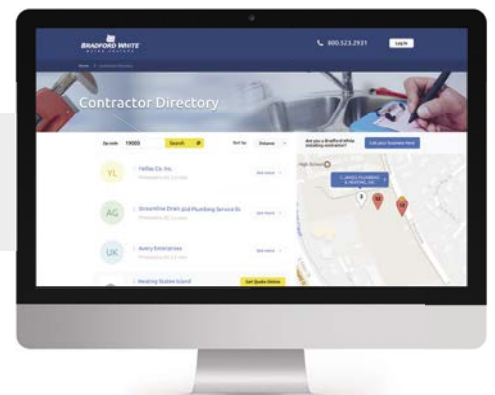
Local customers will be connected directly with contractors, delivering new sales opportunities for them and you.

- **Close New Leads FAST**

Contractors get notified instantly about new customer leads so they can lock-up jobs quickly.

**Takes just 5 minutes to register - it's fast, easy and FREE!**

**Visit [bwfindapro.com](http://bwfindapro.com)**





## COMMERCIAL WATER HEATERS TO MEET ANY INDUSTRY NEED

All Models meet or exceed both the Recovery Efficiency and Standby Loss Requirements of ASHRAE 90.1b (current standard) and are listed with the California Energy Commission (CEC).

Model numbers shown are for Natural Gas. For LP Gas (Propane) change the suffix "N" to "X" and add \$40.00 to Natural Gas net prices.

EX: LG250H653N becomes LG250H653X.

Some LP Gas inputs and recoveries vary from their Natural Gas counterparts. Consult current specification sheets for accurate information.

Because some states require that heaters 200,000 BTU/Hr. and over, or 120 gallons of storage and over, to be ASME constructed, check with local codes and authorities for applicability.

All Commercial Gas models are designed certified by CSA International (formerly AGA and CGA).

## High Performance Models



### Light Duty Commercial Atmospheric Vent High Input Models

Non-CFC Foam Insulation

| Model Number | Nominal Capacity (Gal.) | DOE Rated Storage Volume (Gal.) | Input BTU/Hr. | GPH Rec. 100°F Rise | First Hour Rating (Gal.) | Style    | Floor to Flue Conn.               | Jacket Dia.                      | Vent Size | Approx. Shpg. Wt. | Limited 3 Year Tank Warranty Price |
|--------------|-------------------------|---------------------------------|---------------|---------------------|--------------------------|----------|-----------------------------------|----------------------------------|-----------|-------------------|------------------------------------|
| LG250H653N   | 48                      | 46                              | 65,000        | 63                  | 106                      | Standard | 60 <sup>1</sup> / <sub>2</sub> "  | 22"                              | 4"        | 193               | \$2,150.00                         |
| LG255H783N   | 55                      | 55                              | 78,000        | 78                  | 117                      | Standard | 58 <sup>1</sup> / <sub>2</sub> "  | 24"                              | 4"        | 207               | 2,300.00                           |
| LG275H763N   | 75                      | 72                              | 76,000        | 74                  | 135                      | Standard | 62 <sup>5</sup> / <sub>8</sub> "  | 26"                              | 4"        | 263               | 3,070.00                           |
| LG2100H803N  | 100                     | 95                              | 80,000        | 82                  | 157                      | Standard | 70 <sup>1</sup> / <sub>16</sub> " | 28 <sup>1</sup> / <sub>4</sub> " | 4"        | 424               | 3,810.00                           |

T&P Valve installed.

Temperature adjustment up to 180°F.

All models feature side connections for space heating and two anode rods.

\*When tested to the industry standard Residential First Hour Delivery procedure.

Temperature adjustment up to 180°F.

NSF compliance kits available for all models.

#### Circulating Loop Installation Kit:

P/N 265-43103-00 (Dielectric unions, Isolation valves and Extended nipples) . . . \$68.25

#### Water Connection Centers as Follows:

LG250H653N = 11"

LG255H783N = 8"

LG275H763N = 11"

LG2100H803N = 16"

#### Water Connection Sizes as Follows:

LG250H653N = ¾"

LG255H783N = ¾"

LG275H763N = 1"

LG2100H803N = 1<sup>1</sup>/<sub>4</sub>"

Hand Hole cleanout standard on 100 gallon model only.

# Commercial Gas Models

## Power Vent, Power Direct Vent Models



### Light Duty Commercial High Efficiency eF Series® Power Vent Model

2" Non-CFC Foam Insulation — 120 VAC required



| Model Number | Nominal Capacity (Gal.) | DOE Rated Storage Volume (Gal.) | Input BTU/Hr. | GPH Rec. 100°F Rise | First Hour Rating (Gal.) | Style    | Floor to Vent Conn.                | Jacket Dia. | Vent Size    | Approx. Shpg. Wt. | Limited 3 Year Tank Warranty Price |
|--------------|-------------------------|---------------------------------|---------------|---------------------|--------------------------|----------|------------------------------------|-------------|--------------|-------------------|------------------------------------|
| LC2PV50H763N | 50                      | 49                              | 76,000        | 83                  | 120                      | Standard | 67 <sup>31</sup> / <sub>74</sub> " | 24"         | 2", 3" or 4" | 225               | \$3,085.00                         |

T&P Relief Valve Installed.

Feature side connections for space heating.



### Light Duty Commercial TTW® Power Vent Models

2" Non-CFC Foam Insulation - 120 VAC required

(LG1PV55H783N has 1" Non-CFC Foam Insulation)



| Model Number | Nominal Capacity (Gal.) | DOE Rated Storage Volume (Gal.) | Input BTU/Hr. | GPH Rec. 100°F Rise | First Hour Rating (Gal.) | Style    | Floor to Vent Conn.                | Jacket Dia. | Vent Size | Approx. Shpg. Wt. | Limited 3 Year Tank Warranty Price |
|--------------|-------------------------|---------------------------------|---------------|---------------------|--------------------------|----------|------------------------------------|-------------|-----------|-------------------|------------------------------------|
| LG2PV50H653N | 48                      | 46                              | 65,000        | 63                  | 116                      | Standard | 64 <sup>3</sup> / <sub>4</sub> "   | 22"         | 3" or 4"  | 186               | \$3,300.00                         |
| LG1PV55H783N | 55                      | 55                              | 78,000        | 76                  | 125                      | Standard | 64 <sup>3</sup> / <sub>8</sub> "   | 22"         | 3" or 4"  | 253               | 4,154.00                           |
| LG2PV75H763N | 75                      | 72                              | 76,000        | 74                  | 121                      | Standard | 67 <sup>11</sup> / <sub>16</sub> " | 26"         | 3" or 4"  | 252               | 3,505.00                           |

T&P Relief Valve Installed. LG1PV55H783N Includes Mixing Valve.

All models feature side connections for space heating.

NSF compliance kits available for all models

Temperature adjustments up to 180°F.

Commercial Gas Models



### Light Duty Commercial Power Direct Vent Models

2" Non-CFC Foam Insulation - 120 VAC required



| Model Number  | Nominal Capacity (Gal.) | DOE Rated Storage Volume (Gal.) | Input BTU/Hr. | GPH Rec. 100°F Rise | First Hour Rating (Gal.) | Style    | Floor to Exhaust Conn.             | Jacket Dia. | Vent Size | Approx. Shpg. Wt. | Limited 3 Year Tank Warranty Price |
|---------------|-------------------------|---------------------------------|---------------|---------------------|--------------------------|----------|------------------------------------|-------------|-----------|-------------------|------------------------------------|
| LG2PDV50H603N | 48                      | 46                              | 60,000        | 58                  | 103                      | Standard | 67 <sup>5</sup> / <sub>16</sub> "  | 22"         | 3" or 4"  | 205               | \$2,910.00                         |
| LG2PDV75H803N | 75                      | 72                              | 80,000        | 77                  | 134                      | Standard | 67 <sup>11</sup> / <sub>16</sub> " | 26"         | 3" or 4"  | 392               | 4,104.00                           |

T&P Relief Valve Installed.

All models feature side connections for space heating.

NSF compliance kits available for all models.

Temperature adjustments up to 180°F.

- 3" Concentric Vent Kit Termination
- Air Intake Relief Device

P/N 239-44069-01 .....\$67.20

P/N 239-48392-00 .....\$70.35



# Commercial Gas Models

## Direct Vent Models

### Light Duty Commercial Direct Vent Models

2" Non-CFC Foam Insulation



| Model Number     | Nominal Capacity (Gal.) | DOE Rated Storage Volume (Gal.) | Input BTU/Hr. | GPH Rec. 100°F Rise | First Hour Rating (Gal.) | Style    | Floor to C/L of Vent Conn. (min.)  | Jacket Dia. | Vent Size I.D. O.D. | Approx. Shpg. Wt. | Limited 3 Year Tank Warranty Price |
|------------------|-------------------------|---------------------------------|---------------|---------------------|--------------------------|----------|------------------------------------|-------------|---------------------|-------------------|------------------------------------|
| LG2DV50H503N-SLD | 48                      | 46                              | 50,000        | 47                  | 96                       | Standard | 75 <sup>11</sup> / <sub>16</sub> " | 22"         | 4" 6"               | 217               | \$2,905.00                         |
| LG2DV50H503N-FLX | 48                      | 46                              | 50,000        | 47                  | 96                       | Standard | 75 <sup>11</sup> / <sub>16</sub> " | 22"         | 4" 6"               | 217               | 3,010.00                           |
| LG2DV50H503N-OLY | 48                      | 46                              | 50,000        | 47                  | 96                       | Standard | 75 <sup>11</sup> / <sub>16</sub> " | 22"         | 4" 6"               | 217               | 2,850.00                           |

T&P Relief Valve Installed.

All models feature side connections for space heating.

NSF compliance kits available for all models. Water connections are 3/4" on 11" centers.

Temperature adjustments up to 180°F.

Telescoping Solid Vent Kit (-SLD), or Flexible Vent Kit (-FLX) is shipped with the water heater.

Ex: LG2DV50H503N-SLD. This model ships with Telescoping Solid Vent Kit

Ex: LG2DV50H503N-FLX. This model ships with Flexible Vent Kit

When a Vent Kit is not needed or is required to be shipped separately add (-OLY) to the model number.

EX: LG2DV50H503N-OLY. This model ships without a Vent Kit.

Solid Vent Kit shipped separately.

P/N 239-51286-00 . . . . . \$136.00

Flexible Vent Kit shipped separately.

P/N 239-51287-00 . . . . . \$172.00

Refer to Installation and Operating Manual for Vent Kit Components. Horizontal vent termination only.

Optional Telescoping Solid Vent Kits:

■ Kit "F" Telescopes from 4<sup>3</sup>/<sub>8</sub>" to 5<sup>1</sup>/<sub>8</sub>" P/N 239-42516-00 . . . . . \$47.25

■ Kit "G" Telescopes from 6<sup>1</sup>/<sub>2</sub>" to 9<sup>1</sup>/<sub>8</sub>" P/N 239-42517-00 . . . . . \$59.85

■ Kit "H" Telescopes from 13<sup>3</sup>/<sub>8</sub>" to 23<sup>1</sup>/<sub>8</sub>" P/N 239-42514-00 . . . . . \$73.50

■ Kit "I" Telescopes from 49<sup>1</sup>/<sub>8</sub>" to 95<sup>1</sup>/<sub>8</sub>" P/N 239-42512-00 . . . . . \$129.15

## Ultra Low NOx Models

### Light Duty Commercial Ultra Low NOx Atmospheric Vent High Input Models

2" Non-CFC Foam Insulation



| Model Number | Nominal Capacity (Gal.) | DOE Rated Storage Volume (Gal.) | Input BTU/Hr. | GPH Rec. 100°F Rise | First Hour Rating (Gal.) | Style    | Floor to Flue Conn.               | Jacket Dia.                      | Vent Size | Approx. Shpg. Wt. | Limited 3 Year Tank Warranty Price |
|--------------|-------------------------|---------------------------------|---------------|---------------------|--------------------------|----------|-----------------------------------|----------------------------------|-----------|-------------------|------------------------------------|
| ULG250H553N  | 48                      | 46                              | 55,000        | 53                  | 110                      | Standard | 60 <sup>1</sup> / <sub>2</sub> "  | 22"                              | 4"        | 193               | \$3,421.00                         |
| ULG275H763N  | 75                      | 72                              | 76,000        | 74                  | 135                      | Standard | 64 <sup>3</sup> / <sub>4</sub> "  | 26"                              | 4"        | 263               | 3,510.00                           |
| ULG2100H803N | 100                     | 95                              | 80,000        | 82                  | 157                      | Standard | 72 <sup>5</sup> / <sub>16</sub> " | 28 <sup>1</sup> / <sub>4</sub> " | 4"        | 424               | 4,104.00                           |

T&P Relief Valve Installed.

All models feature side connections for space heating.

NSF compliance kits available for all models.

Temperature adjustments up to 180°F.

# Commercial Gas Models

## Light Duty Commercial Ultra Low NOx Direct Vent Models

1" Non-CFC Foam Insulation



| Model Number      | Nominal Capacity (Gal.) | DOE Rated Storage Volume (Gal.) | Input BTU/Hr. | GPH Rec. 100°F Rise | First Hour Rating (Gal.) | Style    | Floor to C/L of Vent Conn. (min.) | Jacket Dia. | Vent Size I.D. O.D. | Approx. Shpg. Wt. | Limited 3 Year Tank Warranty Price |
|-------------------|-------------------------|---------------------------------|---------------|---------------------|--------------------------|----------|-----------------------------------|-------------|---------------------|-------------------|------------------------------------|
| ULG2DV50H453N-SLD | 48                      | 46                              | 45,000        | 43                  | 83                       | Standard | 75 <sup>5</sup> / <sub>16</sub> " | 22"         | 4" 6"               | 201               | \$3,268.00                         |
| ULG2DV50H453N-FLX | 48                      | 46                              | 45,000        | 43                  | 83                       | Standard | 75 <sup>5</sup> / <sub>16</sub> " | 22"         | 4" 6"               | 201               | 3,359.00                           |
| ULG2DV50H453N-OLY | 48                      | 46                              | 45,000        | 43                  | 83                       | Standard | 75 <sup>5</sup> / <sub>16</sub> " | 22"         | 4" 6"               | 201               | 3,178.00                           |

T&P Relief Valve Installed. All models feature side connections for space heating. NSF compliance kits available for all models. Water connections are 3/4" on 11" centers. Temperature adjustments up to 180°F.

**Telescoping Solid Vent Kit (-SLD), or Flexible Vent Kit (-FLX) is shipped with the water heater.**

**Ex: ULG2DV50H453N-SLD.** This model ships with Telescoping Solid Vent Kit

**Ex: ULG2DV50H453N-FLX.** This model ships with Flexible Vent Kit

**When a Vent Kit is not needed or is required to be shipped separately add (-OLY) to the model number.**

**EX: ULG2DV50H453N-OLY.** This model ships without a Vent Kit.

Solid Vent Kit shipped separately. P/N 239-51286-00 . . . . . \$136.00

Flexible Vent Kit shipped separately. P/N 239-51287-00 . . . . . \$172.00

**Refer to Installation and Operating Manual for Vent Kit Components. Horizontal vent termination only.**

**Optional Telescoping Solid Vent Kits:**

- Kit "F" Telescopes from 4¾" to 5<sup>1</sup>/<sub>16</sub>" P/N 239-42516-00 . . . . . \$47.25
- Kit "G" Telescopes from 6½" to 9¾" P/N 239-42517-00 . . . . . \$59.85
- Kit "H" Telescopes from 13¾" to 23<sup>1</sup>/<sub>16</sub>" P/N 239-42514-00 . . . . . \$73.50
- Kit "I" Telescopes from 49<sup>1</sup>/<sub>16</sub>" to 95<sup>1</sup>/<sub>16</sub>" P/N 239-42512-00 . . . . . \$129.15

Commercial Gas Models

## Light Duty Commercial Ultra Low NOx TTW® Power Vent Models

2" Non-CFC Foam Insulation - 120 VAC required



| Model Number  | Nominal Capacity (Gal.) | DOE Rated Storage Volume (Gal.) | Input BTU/Hr. | GPH Rec. 100°F Rise | First Hour Rating (Gal.) | Style    | Floor to Vent Conn.               | Jacket Dia. | Vent Size | Approx. Shpg. Wt. | Limited 3 Year Tank Warranty Price |
|---------------|-------------------------|---------------------------------|---------------|---------------------|--------------------------|----------|-----------------------------------|-------------|-----------|-------------------|------------------------------------|
| ULG2PV50H563N | 48                      | 46                              | 56,000        | 54                  | 107                      | Standard | 64¾"                              | 22"         | 3" or 4"  | 190               | \$3,597.00                         |
| ULG2PV75H763N | 75                      | 72                              | 76,000        | 74                  | 121                      | Standard | 67 <sup>1</sup> / <sub>16</sub> " | 26"         | 3" or 4"  | 270               | 5,124.00                           |

T&P Relief Valve Installed. All models feature side connections for space heating. NSF compliance kits available for all models. Temperature adjustments up to 180°F.

## Light Duty Ultra Low NOx Power Direct Vent Models

2" Non-CFC Foam Insulation - 120 VAC required



| Model Number   | Nominal Capacity (Gal.) | DOE Rated Storage Volume (Gal.) | Input BTU/Hr. | GPH Rec. 100°F Rise | First Hour Rating (Gal.) | Style | Floor to Vent Conn.               | Jacket Dia. | Vent Size | Approx. Shpg. Wt. | Limited 3 Year Tank Warranty Price |
|----------------|-------------------------|---------------------------------|---------------|---------------------|--------------------------|-------|-----------------------------------|-------------|-----------|-------------------|------------------------------------|
| ULG2PDV50H503N | 48                      | 46                              | 50,000        | 48                  | 82                       | Tall  | 67 <sup>5</sup> / <sub>16</sub> " | 22"         | 3" or 4"  | 201               | \$3,902.00                         |

T&P Relief Valve Installed. Feature side connections for space heating. NSF compliance kits available for all models. Water connections are 3/4" on 11" centers. Temperature adjustments up to 180°F.

- 3" Concentric Vent Kit Termination P/N 239-44069-01 . . . . . \$67.20
- Air Intake Relief Device P/N 239-48392-00 . . . . . \$70.35

### Light Duty Commercial Gas Product Options

Add

- NSF Compliance Kit: (All models except (U)LG100H  
P/N 243-41203-00 . . . . . \$76.65
- NSF Compliance Kit: (U)LG2100H Only  
P/N 243-41209-00 . . . . . \$76.65
- For LP gas (propane) change suffix "N" to "X" and add . . . . . \$40.00  
to natural gas net prices where applicable.
- Circulating Loop Installation Kit:  
P/N 265-43103-00 (Dielectric unions, Isolation valves and Extended nipples) . . . . . \$68.25

The NSF kit for Light Duty Commercial Gas water heaters is ordered as a separate line item with the water heater using the applicable part number. The kits are also available for order through our parts department for field conversions.

# Commercial Gas Models



## Heavy Duty Atmospheric Vent Models



### Commander Series™ Atmospheric Vent Models — Non-ASME

Non-CFC Foam Insulation - 120 VAC Required

| Model Number    | Nominal Capacity (Gal.) | Input BTU/Hr. | GPH Rec. 100°F Rise | Style    | Floor to Flue Conn.                | Jacket Dia. | Vent Size | Approx. Shpg. Wt. | Limited 3 Year Tank Warranty Price |
|-----------------|-------------------------|---------------|---------------------|----------|------------------------------------|-------------|-----------|-------------------|------------------------------------|
| UCG-80H-125-3N  | 80                      | 125,000       | 123                 | Standard | 68 <sup>15</sup> / <sub>16</sub> " | 28"         | 5"        | 535               | \$7,165.00                         |
| UCG-80H-199-3N  | 80                      | 199,999       | 197                 | Standard | 62 <sup>13</sup> / <sub>16</sub> " | 28"         | 6"        | 535               | 9,370.00                           |
| UCG-80H-270-3N  | 80                      | 270,000       | 266                 | Standard | 62 <sup>13</sup> / <sub>16</sub> " | 28"         | 6"        | 545               | 10,750.00                          |
| UCG-80H-399-3N  | 80                      | 399,999       | 384                 | Standard | 68 <sup>15</sup> / <sub>16</sub> " | 28"         | 8"        | 545               | 15,390.00                          |
| UCG-100H-199-3N | 100                     | 199,999       | 197                 | Standard | 73 <sup>1</sup> / <sub>4</sub> "   | 28"         | 6"        | 632               | 9,370.00                           |
| UCG-100H-270-3N | 100                     | 270,000       | 266                 | Standard | 73 <sup>1</sup> / <sub>4</sub> "   | 28"         | 6"        | 632               | 10,685.00                          |
| UCG-100H-399-3N | 98                      | 399,999       | 398                 | Standard | 77 <sup>7</sup> / <sub>16</sub> "  | 28"         | 8"        | 657               | 16,425.00                          |

T&P Relief Valve Installed.

NSF compliance kits available for all models.

#### Product Options

■ For propane gas models change suffix "N" to "X" (Propane Gas not available on UCG-100H-399-3N)

Example: UCG-100H-199-3X, and add ..... \$40.00 to natural gas net prices where applicable.



### Commander Series™ Atmospheric Vent Models — ASME

Non-CFC Foam Insulation - 120 VAC Required

| Model Number     | Nominal Capacity (Gal.) | Input BTU/Hr. | GPH Rec. 100°F Rise | Style    | Floor to Flue Conn.                | Jacket Dia. | Vent Size | Approx. Shpg. Wt. | Limited 3 Year Tank Warranty Price |
|------------------|-------------------------|---------------|---------------------|----------|------------------------------------|-------------|-----------|-------------------|------------------------------------|
| UCG-80H-125-3NA  | 80                      | 125,000       | 123                 | Standard | 68 <sup>15</sup> / <sub>16</sub> " | 28"         | 5"        | 535               | \$10,015.00                        |
| UCG-80H-199-3NA  | 80                      | 199,999       | 197                 | Standard | 62 <sup>13</sup> / <sub>16</sub> " | 28"         | 6"        | 535               | 11,569.00                          |
| UCG-80H-270-3NA  | 80                      | 270,000       | 266                 | Standard | 62 <sup>13</sup> / <sub>16</sub> " | 28"         | 6"        | 545               | 14,050.00                          |
| UCG-80H-399-3NA  | 80                      | 399,999       | 384                 | Standard | 68 <sup>15</sup> / <sub>16</sub> " | 28"         | 8"        | 545               | 17,650.00                          |
| UCG-100H-199-3NA | 100                     | 199,999       | 197                 | Standard | 73 <sup>1</sup> / <sub>4</sub> "   | 28"         | 6"        | 632               | 11,910.00                          |
| UCG-100H-270-3NA | 100                     | 270,000       | 266                 | Standard | 73 <sup>1</sup> / <sub>4</sub> "   | 28"         | 6"        | 632               | 13,250.00                          |
| UCG-100H-399-3NA | 98                      | 399,999       | 398                 | Standard | 77 <sup>7</sup> / <sub>16</sub> "  | 28"         | 8"        | 657               | 18,830.00                          |

# Commercial Gas Models

## Flue Damper and Induced Draft Models



### Electronic Ignition Models — Non-ASME

Non-CFC Foam Insulation - 120 VAC required

| Model Number    | Nominal Capacity (Gal.) | Input BTU/Hr. | GPH Rec. 100°F Rise | Floor to Top of Heater             | Dia.                             | Vent Size | Approx. Shpg. Wt. | Limited 3 Year Tank Warranty Price |
|-----------------|-------------------------|---------------|---------------------|------------------------------------|----------------------------------|-----------|-------------------|------------------------------------|
| D-38T-155-3N    | 38                      | 155,000       | 150                 | 47 <sup>1</sup> / <sub>16</sub> "  | 28 <sup>1</sup> / <sub>4</sub> " | 6"        | 438               | \$7,885.00                         |
| D-65T-370-3N    | 65                      | 370,000       | 359                 | 68 <sup>5</sup> / <sub>16</sub> "  | 28 <sup>1</sup> / <sub>4</sub> " | 8"        | 665               | 10,990.00                          |
| D-65T-399-3N††  | 65                      | 399,999       | 388                 | 68 <sup>5</sup> / <sub>16</sub> "  | 28 <sup>1</sup> / <sub>4</sub> " | 8"        | 665               | 13,055.00                          |
| D-75T-125-3N    | 75                      | 125,000       | 121                 | 69 <sup>1</sup> / <sub>16</sub> "  | 28 <sup>1</sup> / <sub>4</sub> " | 5"        | 520               | 5,880.00                           |
| D-75T-160-3N    | 75                      | 160,000       | 155                 | 69 <sup>1</sup> / <sub>16</sub> "  | 28 <sup>1</sup> / <sub>4</sub> " | 6"        | 520               | 7,345.00                           |
| D-75T-300-3N    | 75                      | 300,000       | 291                 | 69 <sup>13</sup> / <sub>16</sub> " | 28 <sup>1</sup> / <sub>4</sub> " | 7"        | 590               | 9,135.00                           |
| D-80T-180-3N    | 80                      | 180,000       | 175                 | 68 <sup>5</sup> / <sub>16</sub> "  | 28 <sup>1</sup> / <sub>4</sub> " | 6"        | 540               | 7,600.00                           |
| D-80T-199-3N    | 80                      | 199,999       | 194                 | 68 <sup>5</sup> / <sub>16</sub> "  | 28 <sup>1</sup> / <sub>4</sub> " | 6"        | 540               | 7,600.00                           |
| D-80T-250-3N    | 80                      | 250,000       | 242                 | 68 <sup>5</sup> / <sub>16</sub> "  | 28 <sup>1</sup> / <sub>4</sub> " | 6"        | 540               | 8,100.00                           |
| D-80L-399-3N    | 80                      | 399,999       | 388                 | 64 <sup>1</sup> / <sub>4</sub> "   | 30 <sup>1</sup> / <sub>4</sub> " | 8"        | 800               | 10,345.00                          |
| D-80L-450-3N    | 80                      | 450,000       | 436                 | 64 <sup>1</sup> / <sub>4</sub> "   | 30 <sup>1</sup> / <sub>4</sub> " | 10"       | 800               | 14,475.00                          |
| D-80T-425-3N    | 80                      | 425,000       | 412                 | 79 <sup>5</sup> / <sub>16</sub> "  | 28 <sup>1</sup> / <sub>4</sub> " | 10"       | 750               | 14,680.00                          |
| D-80L-505-3N    | 80                      | 505,000       | 489                 | 64 <sup>1</sup> / <sub>4</sub> "   | 30 <sup>1</sup> / <sub>4</sub> " | 10"       | 800               | 14,510.00                          |
| D-80T-505-3N    | 80                      | 505,000       | 489                 | 79 <sup>5</sup> / <sub>16</sub> "  | 28 <sup>1</sup> / <sub>4</sub> " | 10"       | 750               | 14,510.00                          |
| D-100L-199-3N   | 100                     | 199,999       | 194                 | 68 <sup>15</sup> / <sub>16</sub> " | 30 <sup>1</sup> / <sub>4</sub> " | 6"        | 725               | 7,825.00                           |
| D-100S-199-3N   | 100                     | 199,999       | 194                 | 79 <sup>5</sup> / <sub>16</sub> "  | 28 <sup>1</sup> / <sub>4</sub> " | 6"        | 667               | 7,825.00                           |
| D-100T-199-3N   | 98                      | 199,999       | 194                 | 79 <sup>5</sup> / <sub>16</sub> "  | 28 <sup>1</sup> / <sub>4</sub> " | 6"        | 610               | 7,825.00                           |
| D-100L-250-3N   | 100                     | 250,000       | 242                 | 68 <sup>5</sup> / <sub>16</sub> "  | 30 <sup>1</sup> / <sub>4</sub> " | 6"        | 725               | 8,705.00                           |
| D-100S-250-3N   | 100                     | 250,000       | 242                 | 79 <sup>5</sup> / <sub>16</sub> "  | 28 <sup>1</sup> / <sub>4</sub> " | 6"        | 667               | 8,705.00                           |
| D-100T-250-3N   | 98                      | 250,000       | 242                 | 79 <sup>5</sup> / <sub>16</sub> "  | 28 <sup>1</sup> / <sub>4</sub> " | 6"        | 610               | 8,705.00                           |
| D-100L-270-3N†† | 100                     | 270,000       | 262                 | 68 <sup>5</sup> / <sub>16</sub> "  | 30 <sup>1</sup> / <sub>4</sub> " | 6"        | 725               | 8,980.00                           |
| D-100L-300-3N   | 100                     | 300,000       | 291                 | 68 <sup>5</sup> / <sub>16</sub> "  | 30 <sup>1</sup> / <sub>4</sub> " | 7"        | 725               | 9,200.00                           |

†† Available in Natural Gas only.

### Electronic Ignition Models — ASME

Non-CFC Foam Insulation - 120 VAC required

| Model Number     | Nominal Capacity (Gal.) | Input BTU/Hr. | GPH Rec. 100°F Rise | Floor to Top of Heater             | Dia.                             | Vent Size | Approx. Shpg. Wt. | Limited 3 Year Tank Warranty Price |
|------------------|-------------------------|---------------|---------------------|------------------------------------|----------------------------------|-----------|-------------------|------------------------------------|
| D-65T-370-3NA    | 65                      | 370,000       | 359                 | 68 <sup>5</sup> / <sub>16</sub> "  | 28 <sup>1</sup> / <sub>4</sub> " | 8"        | 720               | \$12,755.00                        |
| D-65T-399-3NA††  | 65                      | 399,999       | 388                 | 68 <sup>5</sup> / <sub>16</sub> "  | 28 <sup>1</sup> / <sub>4</sub> " | 8"        | 720               | 13,485.00                          |
| D-75T-300-3NA    | 75                      | 300,000       | 291                 | 69 <sup>13</sup> / <sub>16</sub> " | 28 <sup>1</sup> / <sub>4</sub> " | 7"        | 645               | 11,010.00                          |
| D-80T-250-3NA    | 80                      | 250,000       | 242                 | 68 <sup>5</sup> / <sub>16</sub> "  | 28 <sup>1</sup> / <sub>4</sub> " | 6"        | 590               | 10,045.00                          |
| D-80L-399-3NA    | 80                      | 399,999       | 388                 | 64 <sup>1</sup> / <sub>4</sub> "   | 30 <sup>1</sup> / <sub>4</sub> " | 8"        | 835               | 12,160.00                          |
| D-80L-450-3NA    | 80                      | 450,000       | 436                 | 64 <sup>1</sup> / <sub>4</sub> "   | 30 <sup>1</sup> / <sub>4</sub> " | 10"       | 835               | 15,930.00                          |
| D-80T-425-3NA    | 80                      | 425,000       | 412                 | 79 <sup>5</sup> / <sub>16</sub> "  | 28 <sup>1</sup> / <sub>4</sub> " | 10"       | 800               | 15,985.00                          |
| D-80L-505-3NA    | 80                      | 505,000       | 489                 | 64 <sup>1</sup> / <sub>4</sub> "   | 30 <sup>1</sup> / <sub>4</sub> " | 10"       | 835               | 15,995.00                          |
| D-80T-505-3NA    | 80                      | 505,000       | 489                 | 79 <sup>5</sup> / <sub>16</sub> "  | 28 <sup>1</sup> / <sub>4</sub> " | 10"       | 800               | 15,995.00                          |
| D-100L-250-3NA   | 100                     | 250,000       | 242                 | 68 <sup>5</sup> / <sub>16</sub> "  | 30 <sup>1</sup> / <sub>4</sub> " | 6"        | 765               | 10,690.00                          |
| D-100S-250-3NA   | 100                     | 250,000       | 242                 | 79 <sup>5</sup> / <sub>16</sub> "  | 28 <sup>1</sup> / <sub>4</sub> " | 6"        | 702               | 10,690.00                          |
| D-100T-250-3NA   | 98                      | 250,000       | 242                 | 79 <sup>5</sup> / <sub>16</sub> "  | 28 <sup>1</sup> / <sub>4</sub> " | 6"        | 690               | 10,690.00                          |
| D-100L-270-3NA†† | 100                     | 270,000       | 262                 | 68 <sup>5</sup> / <sub>16</sub> "  | 30 <sup>1</sup> / <sub>4</sub> " | 6"        | 765               | 10,885.00                          |
| D-100L-300-3NA   | 100                     | 300,000       | 291                 | 68 <sup>5</sup> / <sub>16</sub> "  | 30 <sup>1</sup> / <sub>4</sub> " | 7"        | 765               | 10,995.00                          |

†† Available in Natural Gas only.

**Low NOx Models:** For Low NOx models add "E" to the model number as displayed, EX: D-100T-199E-3N and increase net price by: ..... \$175.00  
 The Low NOx option is available on Natural Gas Models ONLY, with inputs from 125,000 to 399,999.

T&P Relief Valve Installed and Hand Hole Cleanout is standard.



# Commercial Gas Models



## Induced Draft Models — Non-ASME

Non-CFC Foam Insulation - 120 VAC required

| Model Number | Nominal Capacity (Gal.) | Input BTU/Hr. | GPH Rec. 100°F Rise | Floor to Top of Heater             | Dia.                             | Vent Size | Approx. Shpg. Wt. | Limited 3 Year Tank Warranty Price |
|--------------|-------------------------|---------------|---------------------|------------------------------------|----------------------------------|-----------|-------------------|------------------------------------|
| D-65T-625-3N | 65                      | 625,000       | 606                 | 73 <sup>3</sup> / <sub>16</sub> "  | 28 <sup>1</sup> / <sub>4</sub> " | 8"        | 720               | \$15,040.00                        |
| D-80T-725-3N | 80                      | 725,000       | 703                 | 83 <sup>15</sup> / <sub>16</sub> " | 28 <sup>1</sup> / <sub>4</sub> " | 8"        | 800               | 15,770.00                          |



## Induced Draft Models — ASME

Non-CFC Foam Insulation - 120 VAC required

| Model Number  | Nominal Capacity (Gal.) | Input BTU/Hr. | GPH Rec. 100°F Rise | Floor to Top of Heater             | Dia.                             | Vent Size | Approx. Shpg. Wt. | Limited 3 Year Tank Warranty Price |
|---------------|-------------------------|---------------|---------------------|------------------------------------|----------------------------------|-----------|-------------------|------------------------------------|
| D-65T-625-3NA | 65                      | 625,000       | 606                 | 73 <sup>3</sup> / <sub>16</sub> "  | 28 <sup>1</sup> / <sub>4</sub> " | 8"        | 775               | \$16,045.00                        |
| D-80T-725-3NA | 80                      | 725,000       | 703                 | 83 <sup>15</sup> / <sub>16</sub> " | 28 <sup>1</sup> / <sub>4</sub> " | 8"        | 880               | 16,805.00                          |

### Product Options

- Power Vent Kits Available for Electronic Ignition models ONLY with inputs from 125,000 to 505,000 BTU's/Hr.
  - 125,000 - 270,000 BTU/Hr. P/N 239-81764-00 ..... \$635.25
  - 300,000 - 399,999 BTU/Hr. P/N 239-81766-00 ..... \$752.85
  - 400,000 - 505,000 BTU/Hr. P/N 239-82148-00 ..... \$843.15
- NSF Compliance Kits: P/N 265-44541-01 (D-Series T and S Models) ..... \$76.65  
 P/N 265-44541-02 (D-Series L Models) ..... \$76.65

## Millivolt Models



## Millivolt Models — Non-ASME

Non-CFC Foam Insulation - No electricity required

| Model Number   | Nominal Capacity (Gal.) | Input BTU/Hr. | GPH Rec. 100°F Rise | Floor to Top of Heater             | Dia.                             | Vent Size | Approx. Shpg. Wt. | Limited 3 Year Tank Warranty Price |
|----------------|-------------------------|---------------|---------------------|------------------------------------|----------------------------------|-----------|-------------------|------------------------------------|
| DM-80T-199-3N  | 80                      | 199,999       | 194                 | 76 <sup>3</sup> / <sub>16</sub> "  | 28 <sup>1</sup> / <sub>4</sub> " | 6"        | 540               | \$8,025.00                         |
| DM-100T-199-3N | 98                      | 199,999       | 194                 | 88 <sup>15</sup> / <sub>16</sub> " | 28 <sup>1</sup> / <sub>4</sub> " | 6"        | 610               | 8,236.00                           |

- Low NOx Models: For Low NOx models add "E" to the model number as displayed, EX: DM-100T-199E-3N and increase net price by: ..... \$175.00  
 The Low NOx option is available on Natural Gas Models ONLY, with inputs from 125,000 to 270,000.  
 T&P Relief Valve Installed and Hand Hole Cleanout is standard.

### Product Options

- NSF Compliance Kits:
  - P/N 265-44541-05 DM-Series T and S Models ..... \$76.65
  - P/N 265-44541-06 DM-Series L Models ..... \$76.65

# Commercial Gas Models



## Ultra High Efficiency Models — Non-ASME

Non-CFC Foam Insulation - 120 VAC required

| Model Number      | Nominal Capacity (Gal.) | Input BTU/Hr. | GPH Rec. 100°F Rise | Floor to Top of Heater | Dia. | Vent Size | Approx. Shpg. Wt. | Limited 3 Year Tank Warranty Price |
|-------------------|-------------------------|---------------|---------------------|------------------------|------|-----------|-------------------|------------------------------------|
| ★ EF-60T-125E-3N  | 60                      | 125,000       | 145                 | 56¾"                   | 28¼" | 3" or 4"  | 570               | \$6,558.00                         |
| EF-60T-150E-3N    | 60                      | 150,000       | 169                 | 56¾"                   | 28¼" | 3" or 4"  | 570               | 8,825.00                           |
| EF-60T-199E-3N    | 60                      | 199,999       | 223                 | 56¾"                   | 28¼" | 3" or 4"  | 570               | 8,975.00                           |
| ★ EF-100T-150E-3N | 100                     | 150,000       | 180                 | 85¾"                   | 28¼" | 3" or 4"  | 900               | 9,150.00                           |
| ★ EF-100T-199E-3N | 100                     | 199,999       | 239                 | 85¾"                   | 28¼" | 3" or 4"  | 900               | 9,195.00                           |
| ★ EF-100T-250E-3N | 100                     | 250,000       | 294                 | 85¾"                   | 28¼" | 3" or 4"  | 900               | 10,280.00                          |
| EF-100T-300E-3N   | 100                     | 300,000       | 335                 | 85¾"                   | 28¼" | 3" or 4"  | 900               | 11,595.00                          |
| ★ EF-100T-399E-3N | 100                     | 399,999       | 451                 | 85¾"                   | 28¼" | 3" or 4"  | 950               | 12,895.00                          |

★ = ENERGY STAR® Qualified.



## Ultra High Efficiency Models — ASME

Non-CFC Foam Insulation - 120 VAC required

| Model Number       | Nominal Capacity (Gal.) | Input BTU/Hr. | GPH Rec. 100°F Rise | Floor to Top of Heater | Dia. | Vent Size    | Approx. Shpg. Wt. | Limited 3 Year Tank Warranty Price |
|--------------------|-------------------------|---------------|---------------------|------------------------|------|--------------|-------------------|------------------------------------|
| ★ EF-60T-125E-3NA  | 60                      | 125,000       | 145                 | 56¾"                   | 28¼" | 2", 3" or 4" | 570               | \$8,375.00                         |
| EF-60T-150E-3NA    | 60                      | 150,000       | 169                 | 56¾"                   | 28¼" | 2", 3" or 4" | 570               | 10,040.00                          |
| EF-60T-199E-3NA    | 60                      | 199,999       | 223                 | 56¾"                   | 28¼" | 2", 3" or 4" | 570               | 10,500.00                          |
| ★ EF-100T-150E-3NA | 100                     | 150,000       | 180                 | 85¾"                   | 28¼" | 2", 3" or 4" | 900               | 11,175.00                          |
| ★ EF-100T-199E-3NA | 100                     | 199,999       | 239                 | 85¾"                   | 28¼" | 2", 3" or 4" | 900               | 11,195.00                          |
| ★ EF-100T-250E-3NA | 100                     | 250,000       | 294                 | 85¾"                   | 28¼" | 3" or 4"     | 900               | 12,300.00                          |
| EF-100T-300E-3NA   | 100                     | 300,000       | 335                 | 85¾"                   | 28¼" | 3" or 4"     | 900               | 13,725.00                          |
| ★ EF-100T-399E-3NA | 100                     | 399,999       | 451                 | 85¾"                   | 28¼" | 3", 4" or 6" | 950               | 14,905.00                          |

★ = ENERGY STAR® Qualified.



### Product Options

- Direct Spark Ignition Conversion Kit: P/N 265-48866-01 (125,000 - 199,000 BTU/Hr.) ..... \$676.20  
 P/N 265-48866-02 (250,000 & 300,000 BTU/Hr.) ..... \$736.05
- 2" Concentric Vent Kit Termination: P/N 239-44069-02 ..... \$57.75
- 3" Concentric Vent Kit Termination: P/N 239-44069-01 ..... \$67.20
- NSF Compliance Kit: P/N 265-44542-04 ..... \$75.60
- Maxitrol Pressure Regulator:  
 For separate part order 243-45517-00 ..... \$102.90
- Low Inlet Gas Pressure (3.5" w.c.):  
 For eF heater (except EF-100T-300) with Low Inlet Gas Pressure option  
 order with a "-879", and add ..... \$77.00
- For propane gas models change suffix "N" to "X" and remove "E" from the model number.  
 Example: EF-100T-150-3X, and add ..... \$40.00  
 to natural gas net prices where applicable. Low NOx construction standard.  
 T&P Relief Valve installed and Hand Hole Cleanout is standard.
- Optional Condensate Neutralizer: P/N A2123601 (125,000 - 250,000 BTU/Hr.) ..... \$144.90  
 P/N A2123602 (300,000 BTU/Hr.) ..... \$235.20

# Commercial Gas Models



## Ultra High Efficiency Models — Non-ASME

Non-CFC Foam Insulation - 120 VAC required

| Model Number     | Nominal Capacity (Gal.) | Input BTU/Hr. | GPH Rec. 100°F Rise | Floor to Top of Heater | Dia. | Vent Size | Approx. Shpg. Wt. | Limited 3 Year Tank Warranty Price |
|------------------|-------------------------|---------------|---------------------|------------------------|------|-----------|-------------------|------------------------------------|
| ★ EF-120T-400-3N | 119                     | 399,999       | 456                 | 77½"                   | 33"  | 4" or 6"  | 1,120             | \$12,725.00                        |
| ★ EF-120T-500-3N | 119                     | 499,000       | 568                 | 77½"                   | 33"  | 4" or 6"  | 1,135             | 14,665.00                          |

★ = ENERGY STAR® Qualified.



## Ultra High Efficiency Models — ASME

Non-CFC Foam Insulation - 120 VAC required

| Model Number      | Nominal Capacity (Gal.) | Input BTU/Hr. | GPH Rec. 100°F Rise | Floor to Top of Heater | Dia. | Vent Size | Approx. Shpg. Wt. | Limited 3 Year Tank Warranty Price |
|-------------------|-------------------------|---------------|---------------------|------------------------|------|-----------|-------------------|------------------------------------|
| ★ EF-120T-400-3NA | 119                     | 399,999       | 456                 | 77½"                   | 33"  | 4" or 6"  | 1,120             | \$14,715.00                        |
| ★ EF-120T-500-3NA | 119                     | 499,000       | 568                 | 77½"                   | 33"  | 4" or 6"  | 1,135             | 16,075.00                          |

★ = ENERGY STAR® Qualified.



### Product Options

- NSF Compliance Kit—p/n 265-44542-04..... \$75.60

# Commercial Electric Models

All models are UL and/or ETL listed. All water connections are 3/4" NPT (LE2120T3-3 has 1" NPT). All electrical connections are 3/4". All models are certified at 300 psi test pressure and 150 psi working pressure. All models come equipped with two installed heat traps (except LE2120T, LE120L, and Utility and Wall Hung Models). T&P Valve Installed.

## Commercial Light Duty Upright and Lowboy Model Number Suffix

**NOTE: WHEN ORDERING WATER HEATERS SPECIFY VOLTAGE AND KW INPUT ONLY. THE FOLLOWING TABLES ARE FOR INFORMATIONAL PURPOSES ONLY.**

Phase and Operation are determined by the voltage.

All 208V, 240V and 480V models are shipped standard three phase, non-simultaneous.

Can be converted to single phase and/or simultaneous operation in the field.

All 120V and 277V models are shipped standard single phase, non-simultaneous.

Can be converted to simultaneous operation in the field. Three phase not available.

| Wattage Limitations | Voltage |      |      |      |      |
|---------------------|---------|------|------|------|------|
|                     | 120V    | 208V | 240V | 277V | 480V |
| 1500W / 1500W       | yes     | yes  | yes  | yes  | yes  |
| 2000W / 2000W       | no      | yes  | yes  | yes  | yes  |
| 2500W / 2500W       | no      | yes  | yes  | yes  | yes  |
| 3000W / 3000W       | no      | yes  | yes  | yes  | yes  |
| 3500W / 3500W       | no      | yes  | yes  | no   | no   |
| 4000W / 4000W       | no      | yes  | yes  | yes  | yes  |
| 4500W / 4500W       | no      | yes  | yes  | yes  | yes  |
| 5000W / 5000W       | no      | yes  | yes  | yes  | yes  |
| 5500W / 5500W       | no      | no   | yes  | yes  | yes  |
| 6000W / 6000W       | no      | no   | no   | yes  | yes  |

| Phase | 1 | Single Phase | Operation | N | Non-Simultaneous |
|-------|---|--------------|-----------|---|------------------|
|       | 3 | Three Phase  |           | S | Simultaneous     |

EX: LE250S3-3NCWW

EX: LE250S3-3NCWW

| Designator | A   | C       | E   | H   | J   | L*  |
|------------|-----|---------|-----|-----|-----|-----|
| Voltage    | 120 | 208/240 | 277 | 480 | 600 | 208 |

EX: LE250S3-3NCWW

\* Use "L" voltage designator if wiring 208V with 4500W or 5000W.

For 120V, 277V, 480V, and 600V operation

| Designator | J    | K    | L    | M    | N    | P    | R    | S    | T    | W    | X    | Y    | Z    |
|------------|------|------|------|------|------|------|------|------|------|------|------|------|------|
| Wattage    | 1000 | 1250 | 1500 | 2000 | 2500 | 3000 | 3500 | 3800 | 4000 | 4500 | 5000 | 5500 | 6000 |

EX: LE250S3-3NCWW

For 240V and 208V operation (Dual rated elements show a value for both 240V and 208V)

| Designator   | J    | K    | L    | M    | N    | P    | R    | S    | T    | W    | X    | Y    | Z    | X**  | Y** | Z** |
|--------------|------|------|------|------|------|------|------|------|------|------|------|------|------|------|-----|-----|
| 240V Wattage | 1000 | 1250 | 1500 | 2000 | 2500 | 3000 | 3500 | 3800 | 4000 | 4500 | 5000 | 5500 | —    | —    | —   | —   |
| 208V Wattage | —    | —    | 1000 | 1500 | 2000 | —    | 2500 | —    | 3000 | 3500 | —    | 4000 | 4500 | 5000 | —   | —   |

EX: LE250S3-3NCWW, will give 240V with 4500W/4500W. This same heater can also be energized at 208V with reduced wattage of 3500W/3500W.

\*\* Use "L" voltage designator if wiring 208V with 4500W or 5000W.

## ElectriFLEX LD™ Light Duty Commercial Upright Models

Non-CFC Foam Insulation



| Model Number | Nominal Capacity (Gal.) | Floor to Top of Heater | Floor to Water Conn. | Jacket Dia. | Approx. Shpg. Wt. | Limited 3 Year Tank Warranty Price |
|--------------|-------------------------|------------------------|----------------------|-------------|-------------------|------------------------------------|
| LE230S3-3    | 30                      | 46 $\frac{1}{8}$ "     | 47 $\frac{3}{4}$ "   | 18"         | 85                | \$1,850.00                         |
| LE240S3-3    | 40                      | 47 $\frac{5}{8}$ "     | 48 $\frac{3}{4}$ "   | 20"         | 103               | 2,025.00                           |
| LE250S3-3    | 50                      | 47 $\frac{5}{8}$ "     | 48 $\frac{9}{16}$ "  | 22"         | 130               | 2,270.00                           |
| LE265T3-3    | 65                      | 60"                    | 61"                  | 22"         | 156               | 2,595.00                           |
| LE280T3-3    | 80                      | 60"                    | 61"                  | 24"         | 183               | 2,880.00                           |
| LE2120T3-3   | 119                     | 63"                    | 64 $\frac{13}{16}$ " | 28"         | 305               | 4,040.00                           |

■ NSF Kit: P/N 265-44542-04 . . . . . \$75.60

For voltage and wattage conversions, order one of the kits from chart below.

For INCOLOY® Elements add . . . \$8.00 for each element. No additional charges for 277 volt or 480 volt.

## ElectriFLEX LD™ Light Duty Commercial Lowboy Models

Non-CFC Foam Insulation



| Model Number | Nominal Capacity (Gal.) | Floor to Top of Heater | Floor to Water Conn. | Jacket Dia. | Approx. Shpg. Wt. | Limited 3 Year Tank Warranty Price |
|--------------|-------------------------|------------------------|----------------------|-------------|-------------------|------------------------------------|
| LE120L3-3    | 19                      | 24 $\frac{3}{4}$ "     | 25 $\frac{3}{4}$ "   | 18"         | 58                | \$910.00                           |
| LE130L3-3**  | 30                      | 30"                    | 32 $\frac{3}{4}$ "   | 20"         | 86                | 1,845.00                           |
| LE140L3-3**  | 40                      | 32 $\frac{13}{16}$ "   | 33 $\frac{3}{4}$ "   | 22"         | 115               | 2,110.00                           |
| LE150L3-3**  | 47                      | 32 $\frac{13}{16}$ "   | 34 $\frac{1}{2}$ "   | 24"         | 140               | 2,340.00                           |

\* Dimension does not include additional insulation blanket.

\*\* Models include supplied insulation blanket.

■ NSF Kit: P/N 265-44542-04 . . . . . \$75.60

For voltage and wattage conversions, order one of the kits from chart below.

For INCOLOY® Elements add . . . \$8.00 for each element. No additional charges for 277 volt or 480 volt.



# Commercial Electric Models

## Voltage and Wattage Conversion Kits for Upright and Lowboy Models

| Simultaneous and Non-Simultaneous Wattage | Voltage                 |                         |                         |                           |                         |                         |                           |
|---|-------------------------|-------------------------|-------------------------|---------------------------|-------------------------|-------------------------|---------------------------|
|   | 120                     | 208                     | 240                     | 277                       | 380                     | 415                     | 480                       |
| 1500/1500<br>Price                        | 265-46409-01<br>\$34.65 | 265-46409-05<br>\$34.65 | 265-46409-13<br>\$34.65 | 265-46409-16<br>\$34.65   | 265-46409-24<br>\$57.75 | 265-46409-41<br>\$57.75 | 265-46409-32<br>\$34.65   |
| 2000/2000<br>Price                        | N/A<br>N/A              | 265-46409-06<br>\$34.65 | 265-46409-05<br>\$34.65 | 265-46409-17<br>\$34.65   | 265-46409-43<br>\$57.75 | 265-46409-24<br>\$57.75 | 265-46409-33<br>\$34.65   |
| 2500/2500<br>Price                        | N/A<br>N/A              | 265-46409-07<br>\$34.65 | 265-46409-06<br>\$34.65 | 265-46409-18<br>\$34.65   | 265-46409-25<br>\$57.75 | 265-46409-43<br>\$57.75 | 265-46409-34<br>\$34.65   |
| 3000/3000<br>Price                        | N/A<br>N/A              | 265-46409-08<br>\$34.65 | 265-46409-14<br>\$34.65 | 265-46409-19<br>\$57.75   | 265-46409-26<br>\$57.75 | 265-46409-25<br>\$57.75 | 265-46409-35<br>\$57.75   |
| 3500/3500<br>Price                        | N/A<br>N/A              | 265-46409-09<br>\$34.65 | 265-46409-07<br>\$34.65 | N/A<br>N/A                | 265-46409-27<br>\$57.75 | 265-46409-26<br>\$57.75 | N/A<br>N/A                |
| 4000/4000<br>Price                        | N/A<br>N/A              | 265-46409-10<br>\$34.65 | 265-46409-08<br>\$34.65 | 265-46409-20<br>\$57.75   | 265-46409-29<br>\$57.75 | 265-46409-27<br>\$57.75 | 265-46409-36<br>\$57.75   |
| 4500/4500<br>Price                        | N/A<br>N/A              | 265-46409-11<br>\$34.65 | 265-46409-09<br>\$34.65 | 265-46409-21<br>\$57.75   | 265-46409-30<br>\$57.75 | 265-46409-28<br>\$57.75 | 265-46409-37<br>\$57.75   |
| 5000/5000<br>Price                        | N/A<br>N/A              | 265-46409-12<br>\$34.65 | 265-46409-15<br>\$34.65 | 265-46409-22<br>\$57.75   | 265-46409-31<br>\$57.75 | 265-46409-29<br>\$57.75 | 265-46409-38<br>\$57.75   |
| 5500/5500<br>Price                        | N/A<br>N/A              | N/A<br>N/A              | 265-46409-10<br>\$34.65 | 265-46409-40**<br>\$57.75 | 265-46409-44<br>\$57.75 | 265-46409-30<br>\$57.75 | 265-46409-42**<br>\$57.75 |
| 6000/6000<br>Price                        | N/A<br>N/A              | N/A<br>N/A              | N/A<br>N/A              | 265-46409-23<br>\$57.75   | 265-46409-45<br>\$57.75 | 265-46409-31<br>\$57.75 | 265-46409-39<br>\$57.75   |

Note: Above chart can be used to determine maximum wattage at certain voltages.

\*\*INCOLOY® element only.

Each kit will include two replacement elements, two gaskets, a rating plate overlay and one set of instructions. For water heaters with only one element, please retain the extra element and gasket as a service part.

All models are UL and/or ETL listed. All water connections are 3/4" NPT (LE2120T has 1" NPT). All electrical connections are 3/4". All models are certified at 300 psi test pressure and 150 psi working pressure. All models come equipped with two installed heat traps (Except LE2120T, LE120L, and Utility and Wall Hung Models). T&P Valve Installed.

## Commercial Light Duty Utility and Wall Hung Model Number Suffix

**NOTE: WHEN ORDERING WATER HEATERS SPECIFY VOLTAGE AND KW INPUT ONLY. THE FOLLOWING TABLES ARE FOR INFORMATIONAL PURPOSES ONLY.**

All models (120V, 208V, 240V, 277V and 480V) are shipped standard single phase, non-simultaneous. Three phase, simultaneous operation is not available.

| Phase | 1 | Single Phase | Operation | N | Non-Simultaneous |
|-------|---|--------------|-----------|---|------------------|
|       | 3 | Three Phase  |           | S | Simultaneous     |

EX: LE120U3-1NAL

EX: LE120U3-1NAL

| Designator | A   | C       | E   | H   | J   | L*  |
|------------|-----|---------|-----|-----|-----|-----|
| Voltage    | 120 | 208/240 | 277 | 480 | 600 | 208 |

EX: LE120U3-1NAL

\* Use "L" voltage designator if wiring 208V with 5000, 5500 or 6000 watt; also 2500W or 3000W on LE16U, LE112T, & LE16VV models

For 120V, 277V, 480V, and 600V operation

| Designator | J    | K    | L*   | M    | N    | P    | R    | S    | T    | W    | X    | Y    | Z    |
|------------|------|------|------|------|------|------|------|------|------|------|------|------|------|
| Wattage    | 1000 | 1250 | 1500 | 2000 | 2500 | 3000 | 3500 | 3800 | 4000 | 4500 | 5000 | 5500 | 6000 |

EX: LE120U3-1NAL

\* Use "L" voltage designator if wiring 208V with 2500W or 3000W on LE16U, LE112T, & LE16VV models.

For 240V and 208V operation (Dual rated elements show a value for both 240V and 208V)

| Designator   | J    | K    | L    | M    | N    | P    | R    | S    | T    | W    | X    | Y    | Z    | X**  | Y**   | Z**   |
|--------------|------|------|------|------|------|------|------|------|------|------|------|------|------|------|-------|-------|
| 240V Wattage | 1000 | 1250 | 1500 | 2000 | 2500 | 3000 | 3500 | 3800 | 4000 | 4500 | 5000 | 5500 | 6000 | —    | —     | —     |
| 208V Wattage | —    | —    | 1000 | 1500 | 2000 | —    | 2500 | —    | 3000 | 3500 | —    | 4000 | 4500 | 5000 | 5500† | 6000† |

EX: LE120U3-1NAL, will give 240V with 4500W/4500W. This same heater can also be energized at 208V with reduced wattage of 3500W/3500W.

\*\* Use "L" voltage designator if wiring 208V with 5000, 5500 or 6000 watt.

† Available in non-simultaneous only.

# Commercial Electric Models



## ElectriFLEX LD™ Light Duty Commercial Utility Models — Non-CFC Foam Insulation

| Model Number | Nominal Capacity (Gal.) | Floor to Top of Heater | Floor to Hot Water Conn. | Jacket Dia. | Approx. Shpg. Wt. | Price    |
|--------------|-------------------------|------------------------|--------------------------|-------------|-------------------|----------|
| LE16U3-1†    | 6                       | 16½"                   | 10½"                     | 14"         | 33                | \$735.00 |
| LE110U3-1    | 10                      | 17½"                   | 15"                      | 16"         | 48                | 790.00   |
| LE112T3-1†   | 12                      | 27¾"                   | 21½"                     | 14"         | 48                | 830.00   |
| LE115U3-1    | 15                      | 20¼"                   | 17¾"                     | 18"         | 55                | 840.00   |
| LE120U3-1    | 19                      | 24¾"                   | 18½"                     | 18"         | 59                | 905.00   |

† Maximum wattage at any voltage is 3000W.

\* Height bottom to top.

■ **NSF Kit:** Kit Utility 265-44542-04 . . . . . **\$75.60**

For voltage and wattage conversions, order one of the kits from chart below.

The 6 and 12 gallon Utility models have water connections standard on the side and optional connections on the top.

For INCOLOY® Elements add . . . **\$8.00** for each element. No additional charges for 277 volt or 480 volt.



## ElectriFLEX LD™ Light Duty Commercial Wall Hung Models

Non-CFC Foam Insulation

| Model Number | Nominal Cap. (Gal.) | Height of Heater | Wall to Front | Height to Bracket | Height to T&P Conn. | Jacket Dia. | Approx. Shpg. Wt. | Price    |
|--------------|---------------------|------------------|---------------|-------------------|---------------------|-------------|-------------------|----------|
| LE16WV3-1†   | 6                   | 16½"             | 14½"          | 12                | 12"                 | 14"         | 33                | \$870.00 |
| LE112WV-3-1  | 12                  | 16½"             | 18½"          | 12½"              | 13"                 | 18"         | 48                | 930.00   |
| LE120WV-3-1  | 19                  | 24½"             | 18½"          | 18¼"              | 21"                 | 18"         | 59                | 1,020.00 |

† Maximum wattage at any voltage is 3000W.

\* Height bottom to top.

■ **NSF Kit:** Wall Hung 265-44542-05 . . . . . **\$39.90**

For voltage and wattage conversions, order one of the kits from chart below.

For INCOLOY® Elements add . . . **\$8.00** for each element. No additional charges for 277 volt or 480 volt.

Commercial Electric Models

## Voltage and Wattage Conversion Kits for Utility, Wall Hung and Single Element Heaters

| Single Element Wattage | Voltage       |               |               |                |              |              |                |
|------------------------|---------------|---------------|---------------|----------------|--------------|--------------|----------------|
|                        | 120           | 208           | 240           | 277            | 380          | 415          | 480            |
| 1500                   | 265-46409-01  | 265-46409-05  | 265-46409-13  | 265-46409-16   | 265-46409-24 | 265-46409-41 | 265-46409-32   |
| Price                  | \$34.65       | \$34.65       | \$34.65       | \$34.65        | \$57.75      | \$57.75      | \$34.65        |
| 2000                   | 265-46409-02* | 265-46409-06  | 265-46409-05  | 265-46409-17   | 265-46409-43 | 265-46409-24 | 265-46409-33   |
| Price                  | \$26.25       | \$34.65       | \$34.65       | \$34.65        | \$57.75      | \$57.75      | \$34.65        |
| 2500                   | 265-46409-03* | 265-46409-07  | 265-46409-06  | 265-46409-18   | 265-46409-25 | 265-46409-43 | 265-46409-34   |
| Price                  | \$26.25       | \$34.65       | \$34.65       | \$34.65        | \$57.75      | \$57.75      | \$34.65        |
| 3000                   | 265-46409-04* | 265-46409-08  | 265-46409-14  | 265-46409-19   | 265-46409-26 | 265-46409-25 | 265-46409-35   |
| Price                  | \$26.25       | \$34.65       | \$34.65       | \$57.75        | \$57.75      | \$57.75      | \$57.75        |
| 3500                   | N/A           | 265-46409-09  | 265-46409-07  | N/A            | 265-46409-27 | 265-46409-26 | N/A            |
| Price                  | N/A           | \$34.65       | \$34.65       | N/A            | \$57.75      | \$57.75      | N/A            |
| 4000                   | N/A           | 265-46409-10  | 265-46409-08  | 265-46409-20   | 265-46409-29 | 265-46409-27 | 265-46409-36   |
| Price                  | N/A           | \$34.65       | \$34.65       | \$57.75        | \$57.75      | \$57.75      | \$57.75        |
| 4500                   | N/A           | 265-46409-11  | 265-46409-09  | 265-46409-21   | 265-46409-30 | 265-46409-28 | 265-46409-37   |
| Price                  | N/A           | \$34.65       | \$34.65       | \$57.75        | \$57.75      | \$57.75      | \$57.75        |
| 5000                   | N/A           | 265-46409-12  | 265-46409-15  | 265-46409-22   | 265-46409-31 | 265-46409-29 | 265-46409-38   |
| Price                  | N/A           | \$34.65       | \$34.65       | \$57.75        | \$57.75      | \$57.75      | \$57.75        |
| 5500                   | N/A           | 265-46409-46* | 265-46409-10  | 265-46409-40** | 265-46409-44 | 265-46409-30 | 265-46409-42** |
| Price                  | N/A           | \$57.75       | \$34.65       | \$57.75        | \$57.75      | \$57.75      | \$57.75        |
| 6000                   | N/A           | 265-46409-47* | 265-46409-48* | 265-46409-23   | 265-46409-45 | 265-46409-31 | 265-46409-39   |
| Price                  | N/A           | \$57.75       | \$57.75       | \$57.75        | \$57.75      | \$57.75      | \$57.75        |

Note: Above chart can be used to determine maximum wattage at certain voltages.

\*\* INCOLOY® element only. \* 265-46409-02, -03, -04, -46, -47, & -48 contain only one element.

These kits cannot be wired as simultaneous. These are non-simultaneous kits only. Except where noted above, each kit will include two replacement elements, two gaskets, a rating plate overlay and one set of instructions. For water heaters with only one element, please retain the extra element and gasket as a service part.

# Commercial Electric Models

## Commercial ElectriFLEX MD™ Model Number Suffix

**NOTE: WHEN ORDERING WATER HEATERS SPECIFY VOLTAGE, PHASE AND WATTAGE. THE FOLLOWING TABLES ARE FOR INFORMATIONAL PURPOSES ONLY.**

|       |   |              |
|-------|---|--------------|
| Phase | 1 | Single Phase |
|       | 3 | Three Phase  |

EX: E32-120R-3-3C18, Three Phase 240V, 18kW.

|            |     |     |     |     |
|------------|-----|-----|-----|-----|
| Designator | L   | C   | E   | H   |
| Voltage    | 208 | 240 | 277 | 480 |

EX: E32-120R-3-3C18

|            |      |      |       |       |       |       |
|------------|------|------|-------|-------|-------|-------|
| Designator | 06   | 09   | 12    | 135   | 15    | 18    |
| Wattage    | 6000 | 9000 | 12000 | 13500 | 15000 | 18000 |

EX: E32-120R-3-3C18



### ElectriFLEX MD™ Commercial Models 2" Non-CFC Foam Insulation

| Model Number | Nominal Cap. (Gal.) | Floor to Top of Heater | Floor to Water Conn. | Jacket Dia. | Floor to T&P Conn. | Floor to Control Box | Control Box to Back of Heater | Approx. Shpg. Wt. | Limited 3 Year Tank Warranty Price |
|--------------|---------------------|------------------------|----------------------|-------------|--------------------|----------------------|-------------------------------|-------------------|------------------------------------|
| E32-50S-3    | 50                  | 47½"                   | 47½"                 | 22"         | 48½"               | 44½"                 | 24½"                          | 137               | \$3,000.00                         |
| E32-80R-3    | 80                  | 59¼"                   | 61"                  | 24"         | 61¾"               | 57"                  | 26½"                          | 190               | 3,600.00                           |
| E32-120R-3   | 119                 | 63"                    | 64½"                 | 28¼"        | 65"                | 61½"                 | 30½"                          | 312               | 4,100.00                           |

All Medium Duty water heaters are wired 240v, 3 phase, 18kW as standard.

Other wattages, wiring phase, and kW are available and must be specified when ordering.

All 277V models are shipped standard single phase. Three phase not available.

No additional charges for 277 volt or 480 volt.

#### Product Options

##### ■ NSF Compliance Kits:

|                               |         |
|-------------------------------|---------|
| P/N 265-45446-01 (50S) .....  | \$39.90 |
| P/N 265-45446-02 (80R) .....  | \$39.90 |
| P/N 265-45446-03 (120R) ..... | \$39.90 |

#### Field Conversion Kit For ElectriFLEX MD™ Models

| Required Total Heater kW | Kit Part Numbers |              |              |         |
|--------------------------|------------------|--------------|--------------|---------|
|                          | 208 Volts        | 240 Volts    | 480 Volts    | Price   |
| 6                        | 265-43942-13     | 265-43942-07 | 265-43942-01 | \$75.60 |
| 9                        | 265-43942-14     | 265-43942-08 | 265-43942-02 | 75.60   |
| 12                       | 265-43942-15     | 265-43942-09 | 265-43942-03 | 75.60   |
| 13.5                     | 265-43942-16     | 265-43942-10 | 265-43942-04 | 75.60   |
| 15                       | 265-43942-17     | 265-43942-11 | 265-43942-05 | 75.60   |
| 18                       | —                | 265-43942-12 | 265-43942-06 | 75.60   |
| 18                       | 265-43942-18     | —            | —            | 479.85  |

# Commercial Electric Models

## ElectriFLEX HD™ Commercial Models

**NOTE WHEN ORDERING WATER HEATERS SPECIFY VOLTAGE AND kW INPUT. THE FOLLOWING TABLES ARE FOR INFORMATIONAL PURPOSES ONLY.**

All 208V, 240V and 480V models are shipped standard three phase.

Can be converted to single phase in the field.

All 277V models are shipped standard single phase. Three phase not available.



### ElectriFLEX HD™ Commercial Models — Non-ASME 3" Non-CFC Foam Insulation

| Model Number      | Nominal Cap. (Gal.) | Input kW | Number of Elements | GPH Rec. 100°F Rise | Jacket Dia.                      | Floor to Top of Htr.              | Approx. Shpg. Wt. | Limited 3 Year Tank Warranty |
|-------------------|---------------------|----------|--------------------|---------------------|----------------------------------|-----------------------------------|-------------------|------------------------------|
| CEHD-50-6-3CF     | 50                  | 6        | 3                  | 25                  | 24"                              | 50 <sup>1</sup> / <sub>16</sub> " | 270               | \$3,320.00                   |
| CEHD-50-9-3CF     | 50                  | 9        | 3                  | 37                  | 24"                              | 50 <sup>1</sup> / <sub>16</sub> " | 270               | 3,520.00                     |
| CEHD-50-12-3CF    | 50                  | 12       | 3                  | 50                  | 24"                              | 50 <sup>1</sup> / <sub>16</sub> " | 270               | 3,530.00                     |
| CEHD-50-13.5-3CF  | 50                  | 13.5     | 3                  | 56                  | 24"                              | 50 <sup>1</sup> / <sub>16</sub> " | 270               | 3,590.00                     |
| CEHD-50-15-3CF    | 50                  | 15       | 3                  | 62                  | 24"                              | 50 <sup>1</sup> / <sub>16</sub> " | 270               | 3,590.00                     |
| CEHD-50-18-3CF    | 50                  | 18       | 3                  | 74                  | 24"                              | 50 <sup>1</sup> / <sub>16</sub> " | 270               | 3,660.00                     |
| CEHD-50-24-3CF    | 50                  | 24       | 6                  | 99                  | 24"                              | 50 <sup>1</sup> / <sub>16</sub> " | 270               | 4,990.00                     |
| CEHD-50-27-3CF    | 50                  | 27       | 6                  | 112                 | 24"                              | 50 <sup>1</sup> / <sub>16</sub> " | 270               | 5,185.00                     |
| CEHD-50-30-3CF    | 50                  | 30       | 6                  | 124                 | 24"                              | 50 <sup>1</sup> / <sub>16</sub> " | 270               | 5,310.00                     |
| CEHD-50-36-3CF    | 50                  | 36       | 6                  | 149                 | 24"                              | 50 <sup>1</sup> / <sub>16</sub> " | 270               | 5,350.00                     |
| CEHD-50-45-3CF    | 50                  | 45       | 9                  | 186                 | 24"                              | 50 <sup>1</sup> / <sub>16</sub> " | 270               | 7,250.00                     |
| CEHD-50-54-3CF    | 50                  | 54       | 9                  | 223                 | 24"                              | 50 <sup>1</sup> / <sub>16</sub> " | 270               | 7,475.00                     |
| CEHD-80-6-3CF     | 80                  | 6        | 3                  | 25                  | 26"                              | 61 <sup>1</sup> / <sub>4</sub> "  | 335               | \$4,235.00                   |
| CEHD-80-9-3CF     | 80                  | 9        | 3                  | 37                  | 26"                              | 61 <sup>1</sup> / <sub>4</sub> "  | 335               | 4,430.00                     |
| CEHD-80-12-3CF    | 80                  | 12       | 3                  | 50                  | 26"                              | 61 <sup>1</sup> / <sub>4</sub> "  | 335               | 4,435.00                     |
| CEHD-80-13.5-3CF  | 80                  | 13.5     | 3                  | 56                  | 26"                              | 61 <sup>1</sup> / <sub>4</sub> "  | 335               | 4,490.00                     |
| CEHD-80-15-3CF    | 80                  | 15       | 3                  | 62                  | 26"                              | 61 <sup>1</sup> / <sub>4</sub> "  | 335               | 4,490.00                     |
| CEHD-80-18-3CF    | 80                  | 18       | 3                  | 74                  | 26"                              | 61 <sup>1</sup> / <sub>4</sub> "  | 335               | 4,570.00                     |
| CEHD-80-24-3CF    | 80                  | 24       | 6                  | 99                  | 26"                              | 61 <sup>1</sup> / <sub>4</sub> "  | 335               | 5,870.00                     |
| CEHD-80-27-3CF    | 80                  | 27       | 6                  | 112                 | 26"                              | 61 <sup>1</sup> / <sub>4</sub> "  | 335               | 6,070.00                     |
| CEHD-80-30-3CF    | 80                  | 30       | 6                  | 124                 | 26"                              | 61 <sup>1</sup> / <sub>4</sub> "  | 335               | 6,180.00                     |
| CEHD-80-36-3CF    | 80                  | 36       | 6                  | 149                 | 26"                              | 61 <sup>1</sup> / <sub>4</sub> "  | 335               | 6,210.00                     |
| CEHD-80-45-3CF    | 80                  | 45       | 9                  | 186                 | 26"                              | 61 <sup>1</sup> / <sub>4</sub> "  | 335               | 7,700.00                     |
| CEHD-80-54-3CF    | 80                  | 54       | 9                  | 223                 | 26"                              | 61 <sup>1</sup> / <sub>4</sub> "  | 335               | 7,830.00                     |
| CEHD-120-6-3CF    | 119                 | 6        | 3                  | 25                  | 30 <sup>1</sup> / <sub>4</sub> " | 64 <sup>1</sup> / <sub>16</sub> " | 430               | \$5,025.00                   |
| CEHD-120-9-3CF    | 119                 | 9        | 3                  | 37                  | 30 <sup>1</sup> / <sub>4</sub> " | 64 <sup>1</sup> / <sub>16</sub> " | 430               | 5,230.00                     |
| CEHD-120-12-3CF   | 119                 | 12       | 3                  | 50                  | 30 <sup>1</sup> / <sub>4</sub> " | 64 <sup>1</sup> / <sub>16</sub> " | 430               | 5,235.00                     |
| CEHD-120-13.5-3CF | 119                 | 13.5     | 3                  | 56                  | 30 <sup>1</sup> / <sub>4</sub> " | 64 <sup>1</sup> / <sub>16</sub> " | 430               | 5,245.00                     |
| CEHD-120-15-3CF   | 119                 | 15       | 3                  | 62                  | 30 <sup>1</sup> / <sub>4</sub> " | 64 <sup>1</sup> / <sub>16</sub> " | 430               | 5,245.00                     |
| CEHD-120-18-3CF   | 119                 | 18       | 3                  | 74                  | 30 <sup>1</sup> / <sub>4</sub> " | 64 <sup>1</sup> / <sub>16</sub> " | 430               | 5,350.00                     |
| CEHD-120-24-3CF   | 119                 | 24       | 6                  | 99                  | 30 <sup>1</sup> / <sub>4</sub> " | 64 <sup>1</sup> / <sub>16</sub> " | 430               | 6,660.00                     |
| CEHD-120-27-3CF   | 119                 | 27       | 6                  | 112                 | 30 <sup>1</sup> / <sub>4</sub> " | 64 <sup>1</sup> / <sub>16</sub> " | 430               | 6,825.00                     |
| CEHD-120-30-3CF   | 119                 | 30       | 6                  | 124                 | 30 <sup>1</sup> / <sub>4</sub> " | 64 <sup>1</sup> / <sub>16</sub> " | 430               | 6,970.00                     |
| CEHD-120-36-3CF   | 119                 | 36       | 6                  | 149                 | 30 <sup>1</sup> / <sub>4</sub> " | 64 <sup>1</sup> / <sub>16</sub> " | 430               | 6,990.00                     |
| CEHD-120-45-3CF   | 119                 | 45       | 9                  | 186                 | 30 <sup>1</sup> / <sub>4</sub> " | 64 <sup>1</sup> / <sub>16</sub> " | 430               | 8,545.00                     |
| CEHD-120-54-3CF   | 119                 | 54       | 9                  | 223                 | 30 <sup>1</sup> / <sub>4</sub> " | 64 <sup>1</sup> / <sub>16</sub> " | 430               | 8,625.00                     |

Specify Voltage, Wattage, and Phase when ordering.

### Product Options

|   | <b>Add</b>     |
|---|----------------|
| For 277/480 volt (INCOLOY® Elements standard) . . . . . | <b>\$60.00</b> |
| <b>NSF Compliance Kits:</b>                             |                |
| 265-44542-01 CEHD-50 Models . . . . .                   | <b>\$75.60</b> |
| 265-44542-02 CEHD-80 Models . . . . .                   | <b>\$75.60</b> |
| 265-44542-03 CEHD-120 Models . . . . .                  | <b>\$75.60</b> |

# Commercial Electric Models



## ElectriFLEX HD™ Commercial Models — ASME 3" Non-CFC Foam Insulation

| Model Number       | Nominal Cap. (Gal.) | Input kW | Number of Elements | GPH Rec. 100°F Rise | Jacket Dia.                      | Floor to Top of Htr.             | Approx. Shpg. Wt. | Limited 3 Year Tank Warranty |
|--------------------|---------------------|----------|--------------------|---------------------|----------------------------------|----------------------------------|-------------------|------------------------------|
| CEHD-50A-6-3CF     | 50                  | 6        | 3                  | 25                  | 24"                              | 50 <sup>1</sup> / <sub>6</sub> " | 302               | \$3,805.00                   |
| CEHD-50A-9-3CF     | 50                  | 9        | 3                  | 37                  | 24"                              | 50 <sup>1</sup> / <sub>6</sub> " | 302               | 3,995.00                     |
| CEHD-50A-12-3CF    | 50                  | 12       | 3                  | 50                  | 24"                              | 50 <sup>1</sup> / <sub>6</sub> " | 302               | 4,000.00                     |
| CEHD-50A-13.5-3CF  | 50                  | 13.5     | 3                  | 56                  | 24"                              | 50 <sup>1</sup> / <sub>6</sub> " | 302               | 4,100.00                     |
| CEHD-50A-15-3CF    | 50                  | 15       | 3                  | 62                  | 24"                              | 50 <sup>1</sup> / <sub>6</sub> " | 302               | 4,100.00                     |
| CEHD-50A-18-3CF    | 50                  | 18       | 3                  | 74                  | 24"                              | 50 <sup>1</sup> / <sub>6</sub> " | 302               | 4,140.00                     |
| CEHD-50A-24-3CF    | 50                  | 24       | 6                  | 99                  | 24"                              | 50 <sup>1</sup> / <sub>6</sub> " | 302               | 5,450.00                     |
| CEHD-50A-27-3CF    | 50                  | 27       | 6                  | 112                 | 24"                              | 50 <sup>1</sup> / <sub>6</sub> " | 302               | 5,650.00                     |
| CEHD-50A-30-3CF    | 50                  | 30       | 6                  | 124                 | 24"                              | 50 <sup>1</sup> / <sub>6</sub> " | 302               | 5,770.00                     |
| CEHD-50A-36-3CF    | 50                  | 36       | 6                  | 149                 | 24"                              | 50 <sup>1</sup> / <sub>6</sub> " | 302               | 5,800.00                     |
| CEHD-50A-45-3CF    | 50                  | 45       | 9                  | 186                 | 24"                              | 50 <sup>1</sup> / <sub>6</sub> " | 302               | 7,795.00                     |
| CEHD-50A-54-3CF    | 50                  | 54       | 9                  | 223                 | 24"                              | 50 <sup>1</sup> / <sub>6</sub> " | 302               | 7,620.00                     |
| CEHD-80A-6-3CF     | 80                  | 6        | 3                  | 25                  | 26"                              | 61 <sup>1</sup> / <sub>4</sub> " | 378               | \$4,750.00                   |
| CEHD-80A-9-3CF     | 80                  | 9        | 3                  | 37                  | 26"                              | 61 <sup>1</sup> / <sub>4</sub> " | 378               | 4,940.00                     |
| CEHD-80A-12-3CF    | 80                  | 12       | 3                  | 50                  | 26"                              | 61 <sup>1</sup> / <sub>4</sub> " | 378               | 4,955.00                     |
| CEHD-80A-13.5-3CF  | 80                  | 13.5     | 3                  | 56                  | 26"                              | 61 <sup>1</sup> / <sub>4</sub> " | 378               | 5,010.00                     |
| CEHD-80A-15-3CF    | 80                  | 15       | 3                  | 62                  | 26"                              | 61 <sup>1</sup> / <sub>4</sub> " | 378               | 5,010.00                     |
| CEHD-80A-18-3CF    | 80                  | 18       | 3                  | 74                  | 26"                              | 61 <sup>1</sup> / <sub>4</sub> " | 378               | 5,070.00                     |
| CEHD-80A-24-3CF    | 80                  | 24       | 6                  | 99                  | 26"                              | 61 <sup>1</sup> / <sub>4</sub> " | 378               | 6,400.00                     |
| CEHD-80A-27-3CF    | 80                  | 27       | 6                  | 112                 | 26"                              | 61 <sup>1</sup> / <sub>4</sub> " | 378               | 6,580.00                     |
| CEHD-80A-30-3CF    | 80                  | 30       | 6                  | 124                 | 26"                              | 61 <sup>1</sup> / <sub>4</sub> " | 378               | 6,680.00                     |
| CEHD-80A-36-3CF    | 80                  | 36       | 6                  | 149                 | 26"                              | 61 <sup>1</sup> / <sub>4</sub> " | 378               | 6,700.00                     |
| CEHD-80A-45-3CF    | 80                  | 45       | 9                  | 186                 | 26"                              | 61 <sup>1</sup> / <sub>4</sub> " | 378               | 8,240.00                     |
| CEHD-80A-54-3CF    | 80                  | 54       | 9                  | 223                 | 26"                              | 61 <sup>1</sup> / <sub>4</sub> " | 378               | 8,410.00                     |
| CEHD-120A-6-3CF    | 119                 | 6        | 3                  | 25                  | 30 <sup>1</sup> / <sub>4</sub> " | 64 <sup>1</sup> / <sub>6</sub> " | 485               | \$5,500.00                   |
| CEHD-120A-9-3CF    | 119                 | 9        | 3                  | 37                  | 30 <sup>1</sup> / <sub>4</sub> " | 64 <sup>1</sup> / <sub>6</sub> " | 485               | 5,690.00                     |
| CEHD-120A-12-3CF   | 119                 | 12       | 3                  | 50                  | 30 <sup>1</sup> / <sub>4</sub> " | 64 <sup>1</sup> / <sub>6</sub> " | 485               | 5,720.00                     |
| CEHD-120A-13.5-3CF | 119                 | 13.5     | 3                  | 56                  | 30 <sup>1</sup> / <sub>4</sub> " | 64 <sup>1</sup> / <sub>6</sub> " | 485               | 5,795.00                     |
| CEHD-120A-15-3CF   | 119                 | 15       | 3                  | 62                  | 30 <sup>1</sup> / <sub>4</sub> " | 64 <sup>1</sup> / <sub>6</sub> " | 485               | 5,795.00                     |
| CEHD-120A-18-3CF   | 119                 | 18       | 3                  | 74                  | 30 <sup>1</sup> / <sub>4</sub> " | 64 <sup>1</sup> / <sub>6</sub> " | 485               | 5,850.00                     |
| CEHD-120A-24-3CF   | 119                 | 24       | 6                  | 99                  | 30 <sup>1</sup> / <sub>4</sub> " | 64 <sup>1</sup> / <sub>6</sub> " | 485               | 7,130.00                     |
| CEHD-120A-27-3CF   | 119                 | 27       | 6                  | 112                 | 30 <sup>1</sup> / <sub>4</sub> " | 64 <sup>1</sup> / <sub>6</sub> " | 485               | 7,200.00                     |
| CEHD-120A-30-3CF   | 119                 | 30       | 6                  | 124                 | 30 <sup>1</sup> / <sub>4</sub> " | 64 <sup>1</sup> / <sub>6</sub> " | 485               | 7,320.00                     |
| CEHD-120A-36-3CF   | 119                 | 36       | 6                  | 149                 | 30 <sup>1</sup> / <sub>4</sub> " | 64 <sup>1</sup> / <sub>6</sub> " | 485               | 7,440.00                     |
| CEHD-120A-45-3CF   | 119                 | 45       | 9                  | 186                 | 30 <sup>1</sup> / <sub>4</sub> " | 64 <sup>1</sup> / <sub>6</sub> " | 485               | 8,920.00                     |
| CEHD-120A-54-3CF   | 119                 | 54       | 9                  | 223                 | 30 <sup>1</sup> / <sub>4</sub> " | 64 <sup>1</sup> / <sub>6</sub> " | 485               | 9,155.00                     |

Specify Voltage, Wattage, and Phase when ordering.

### Product Options

**Add**

#### ASME Construction

For ASME Construction add "A" to model number as displayed

For 277/480 volt (INCOLOY® Elements standard) . . . . . **\$60.00**

#### NSF Compliance Kits:

265-44542-01 CEHD-50 Models . . . . . **\$75.60**  
 265-44542-02 CEHD-80 Models . . . . . **\$75.60**  
 265-44542-03 CEHD-120 Models . . . . . **\$75.60**

Commercial Electric Models

# Commercial Electric Models

## ElectriFLEX HD™ Commercial Models — ASME 3" Non-CFC Foam Insulation

| Model Number         | Desired Input |            | Conversion Kit Part Numbers***      |                                   |                                   |                                   |                                   |                                   |                                   |
|----------------------|---------------|------------|-------------------------------------|-----------------------------------|-----------------------------------|-----------------------------------|-----------------------------------|-----------------------------------|-----------------------------------|
|                      | Total kW      | Element kW | 208 Volts                           | 240 Volts                         | 277 Volts                         | 380 Volts                         | 415 Volts                         | 480 Volts                         | 600 Volts*                        |
| CEHD with 3 Elements | 6             | 2          | 265-51043-73<br>Price<br>\$72.00    | 265-51043-61<br>Price<br>\$72.00  | 265-51043-49<br>Price<br>\$72.00  | 265-51043-37<br>Price<br>\$72.00  | 265-51043-25<br>Price<br>\$72.00  | 265-51043-13<br>Price<br>\$72.00  | 265-51043-01<br>Price<br>\$72.00  |
|                      | 9             | 3          | 265-51043-74<br>Price<br>\$72.00    | 265-51043-62<br>Price<br>\$72.00  | 265-51043-50<br>Price<br>\$72.00  | 265-51043-38<br>Price<br>\$72.00  | 265-51043-26<br>Price<br>\$72.00  | 265-51043-14<br>Price<br>\$72.00  | 265-51043-02<br>Price<br>\$72.00  |
|                      | 12            | 4          | 265-51043-75<br>Price<br>\$72.00    | 265-51043-63<br>Price<br>\$72.00  | 265-51043-51<br>Price<br>\$72.00  | 265-51043-39<br>Price<br>\$72.00  | 265-51043-27<br>Price<br>\$72.00  | 265-51043-15<br>Price<br>\$72.00  | 265-51043-03<br>Price<br>\$72.00  |
|                      | 13.5          | 4.5        | 265-51043-76<br>Price<br>\$72.00    | 265-51043-64<br>Price<br>\$72.00  | 265-51043-52<br>Price<br>\$72.00  | 265-51043-40<br>Price<br>\$72.00  | 265-51043-28<br>Price<br>\$72.00  | 265-51043-16<br>Price<br>\$72.00  | 265-51043-04<br>Price<br>\$72.00  |
|                      | 15            | 5          | 265-51043-77<br>Price<br>\$72.00    | 265-51043-65<br>Price<br>\$72.00  | 265-51043-53<br>Price<br>\$72.00  | 265-51043-41<br>Price<br>\$72.00  | 265-51043-29<br>Price<br>\$72.00  | 265-51043-17<br>Price<br>\$72.00  | 265-51043-05<br>Price<br>\$72.00  |
|                      | 18            | 6          | 265-51043-78<br>Price<br>\$72.00    | 265-51043-66<br>Price<br>\$72.00  | 265-51043-54<br>Price<br>\$72.00  | 265-51043-42<br>Price<br>\$72.00  | 265-51043-30<br>Price<br>\$72.00  | 265-51043-18<br>Price<br>\$72.00  | 265-51043-06<br>Price<br>\$72.00  |
| CEHD with 6 Elements | 24            | 4          | 265-51043-79<br>Price<br>\$124.00   | 265-51043-67<br>Price<br>\$124.00 | 265-51043-55<br>Price<br>\$124.00 | 265-51043-43<br>Price<br>\$124.00 | 265-51043-31<br>Price<br>\$124.00 | 265-51043-19<br>Price<br>\$124.00 | 265-51043-07<br>Price<br>\$124.00 |
|                      | 27            | 4.5        | 265-51043-80<br>Price<br>\$124.00   | 265-51043-68<br>Price<br>\$124.00 | 265-51043-56<br>Price<br>\$124.00 | 265-51043-44<br>Price<br>\$124.00 | 265-51043-32<br>Price<br>\$124.00 | 265-51043-20<br>Price<br>\$124.00 | 265-51043-08<br>Price<br>\$124.00 |
|                      | 30            | 5          | 265-51043-81<br>Price<br>\$124.00   | 265-51043-69<br>Price<br>\$124.00 | 265-51043-57<br>Price<br>\$124.00 | 265-51043-45<br>Price<br>\$124.00 | 265-51043-33<br>Price<br>\$124.00 | 265-51043-21<br>Price<br>\$124.00 | 265-51043-09<br>Price<br>\$124.00 |
|                      | 36            | 6          | 265-51043-82<br>Price<br>\$124.00   | 265-51043-70<br>Price<br>\$124.00 | 265-51043-58<br>Price<br>\$124.00 | 265-51043-46<br>Price<br>\$124.00 | 265-51043-34<br>Price<br>\$124.00 | 265-51043-22<br>Price<br>\$124.00 | 265-51043-10<br>Price<br>\$124.00 |
| CEHD with 9 Elements | 45            | 5          | 265-51043-83<br>Price<br>\$175.00   | 265-51043-71<br>Price<br>\$175.00 | 265-51043-59<br>Price<br>\$175.00 | 265-51043-47<br>Price<br>\$175.00 | 265-51043-35<br>Price<br>\$175.00 | 265-51043-23<br>Price<br>\$175.00 | 265-51043-11<br>Price<br>\$175.00 |
|                      | 54            | 6          | 265-51043-84**<br>Price<br>\$175.00 | 265-51043-72<br>Price<br>\$175.00 | 265-51043-60<br>Price<br>\$175.00 | 265-51043-48<br>Price<br>\$175.00 | 265-51043-36<br>Price<br>\$175.00 | 265-51043-24<br>Price<br>\$175.00 | 265-51043-12<br>Price<br>\$175.00 |

\* Only kW conversion is allowed for models rated 600V. Models rated 480V and below must not be converted to 600V.

\*\* Only available as a three phase conversion kit.

| *** Converting 3 Element Configurations (6-18kW) |                  |                                | *** Converting 6 or 9 element configurations (24-54kW) |                  |                                |
|--|------------------|--------------------------------|--|------------------|--------------------------------|
| From   | To               | Transformer Required           | From   | To               | Transformer Required           |
| 208/240/480 Volt                                 | 277/380/415 Volt | 264-41994-02                   | 208/240/480 Volt                                       | 277/380/415 Volt | 264-41995-02                   |
| 277/380/415 Volt                                 | 208/240/480 Volt | 264-41994-01                   | 277/380/415 Volt                                       | 208/240/480 Volt | 264-41995-01                   |
| 208/240/480 Volt                                 | 208/240/480 Volt | No Transformer Change Required | 208/240/480 Volt                                       | 208/240/480 Volt | No Transformer Change Required |
| 277/380/415 Volt                                 | 277/380/415 Volt | No Transformer Change Required | 277/380/415 Volt                                       | 277/380/415 Volt | No Transformer Change Required |

### Note

3 element models may convert 6 kW thru 18 kW ONLY

6 element models may convert 24 kW thru 36 kW ONLY

9 element models may convert 45 kW thru 54 kW ONLY

# Commercial Electric Models

## ASME Models



### Commercial ASME Models

#### 2" Non-CFC Foam Insulation

| Model Number | Nom. Cap. (Gal.) | Input kW | Number of Elements |             | Floor to Top of Heater | Floor to CW Inlet | Floor to HW Outlet | Jacket Dia. | Approx. Shpg. Wt. | Limited 3 Year Tank Warranty Price |
|--------------|------------------|----------|--------------------|-------------|------------------------|-------------------|--------------------|-------------|-------------------|------------------------------------|
|              |                  |          | Single Phase       | Three Phase |                        |                   |                    |             |                   |                                    |
| 6A-3-3       | 6                | 3        | 1                  | 1           | 17 $\frac{1}{8}$ "     | 6 $\frac{1}{8}$ " | 18 $\frac{1}{4}$ " | 16"         | 83                | \$3,944.00                         |
| 12A-3-3      | 12               | 3        | 1                  | 1           | 28"                    | 6 $\frac{1}{8}$ " | 29"                | 16"         | 118               | 4,114.00                           |
| 12A-6-3      | 12               | 6        | 3                  | 3           | 28"                    | 6 $\frac{1}{8}$ " | 29"                | 16"         | 118               | 4,375.00                           |
| 12A-9-3      | 12               | 9        | 3                  | 3           | 28"                    | 6 $\frac{1}{8}$ " | 29"                | 16"         | 118               | 4,751.00                           |
| 20A-3-3      | 20               | 3        | 1                  | 1           | 27 $\frac{7}{8}$ "     | 6 $\frac{1}{8}$ " | 28 $\frac{1}{2}$ " | 20"         | 145               | 4,298.00                           |
| 20A-6-3      | 20               | 6        | 3                  | 3           | 27 $\frac{7}{8}$ "     | 6 $\frac{1}{8}$ " | 28 $\frac{1}{2}$ " | 20"         | 145               | 4,504.00                           |
| 20A-9-3      | 20               | 9        | 3                  | 3           | 27 $\frac{7}{8}$ "     | 6 $\frac{1}{8}$ " | 28 $\frac{1}{2}$ " | 20"         | 145               | 4,919.00                           |
| 20A-12-3     | 20               | 12       | 3                  | 3           | 27 $\frac{7}{8}$ "     | 6 $\frac{1}{8}$ " | 28 $\frac{1}{2}$ " | 20"         | 145               | 5,003.00                           |
| 20A-13.5-3   | 20               | 13.5     | 3                  | 3           | 27 $\frac{7}{8}$ "     | 6 $\frac{1}{8}$ " | 28 $\frac{1}{2}$ " | 20"         | 145               | 5,273.00                           |
| 20A-15-3     | 20               | 15       | 3                  | 3           | 27 $\frac{7}{8}$ "     | 6 $\frac{1}{8}$ " | 28 $\frac{1}{2}$ " | 20"         | 145               | 5,273.00                           |
| 20A-18-3     | 20               | 18       | 3                  | 3           | 27 $\frac{7}{8}$ "     | 6 $\frac{1}{8}$ " | 28 $\frac{1}{2}$ " | 20"         | 145               | 5,430.00                           |
| 30A-3-3      | 30               | 3        | 1                  | 1           | 38"                    | 6 $\frac{1}{8}$ " | 39"                | 20"         | 180               | 4,478.00                           |
| 30A-6-3      | 30               | 6        | 3                  | 3           | 38"                    | 6 $\frac{1}{8}$ " | 39"                | 20"         | 180               | 4,712.00                           |
| 30A-9-3      | 30               | 9        | 3                  | 3           | 38"                    | 6 $\frac{1}{8}$ " | 39"                | 20"         | 180               | 4,969.00                           |
| 30A-12-3     | 30               | 12       | 3                  | 3           | 38"                    | 6 $\frac{1}{8}$ " | 39"                | 20"         | 180               | 5,207.00                           |
| 30A-13.5-3   | 30               | 13.5     | 3                  | 3           | 38"                    | 6 $\frac{1}{8}$ " | 39"                | 20"         | 180               | 5,369.00                           |
| 30A-15-3     | 30               | 15       | 3                  | 3           | 38"                    | 6 $\frac{1}{8}$ " | 39"                | 20"         | 180               | 5,369.00                           |
| 30A-18-3     | 30               | 18       | 3                  | 3           | 38"                    | 6 $\frac{1}{8}$ " | 39"                | 20"         | 180               | 5,624.00                           |
| 30A-24-3     | 30               | 24       | 4                  | 6           | 38"                    | 6 $\frac{1}{8}$ " | 39"                | 20"         | 180               | 5,817.00                           |
| 30A-27-3     | 30               | 27       | 6                  | 6           | 38"                    | 6 $\frac{1}{8}$ " | 39"                | 20"         | 180               | 7,127.00                           |
| 30A-30-3     | 30               | 30       | 6                  | 6           | 38"                    | 6 $\frac{1}{8}$ " | 39"                | 20"         | 180               | 7,732.00                           |
| 30A-36-3     | 30               | 36       | 6                  | 6           | 38"                    | 6 $\frac{1}{8}$ " | 39"                | 20"         | 180               | 7,813.00                           |
| 40A-3-3      | 40               | 3        | 1                  | 1           | 48 $\frac{1}{4}$ "     | 6 $\frac{1}{8}$ " | 49 $\frac{1}{4}$ " | 20"         | 220               | \$4,641.00                         |
| 40A-6-3      | 40               | 6        | 3                  | 3           | 48 $\frac{1}{4}$ "     | 6 $\frac{1}{8}$ " | 49 $\frac{1}{4}$ " | 20"         | 220               | 4,859.00                           |
| 40A-9-3      | 40               | 9        | 3                  | 3           | 48 $\frac{1}{4}$ "     | 6 $\frac{1}{8}$ " | 49 $\frac{1}{4}$ " | 20"         | 220               | 5,094.00                           |
| 40A-12-3     | 40               | 12       | 3                  | 3           | 48 $\frac{1}{4}$ "     | 6 $\frac{1}{8}$ " | 49 $\frac{1}{4}$ " | 20"         | 220               | 5,369.00                           |
| 40A-13.5-3   | 40               | 13.5     | 3                  | 3           | 48 $\frac{1}{4}$ "     | 6 $\frac{1}{8}$ " | 49 $\frac{1}{4}$ " | 20"         | 220               | 5,574.00                           |
| 40A-15-3     | 40               | 15       | 3                  | 3           | 48 $\frac{1}{4}$ "     | 6 $\frac{1}{8}$ " | 49 $\frac{1}{4}$ " | 20"         | 220               | 5,574.00                           |
| 40A-18-3     | 40               | 18       | 3                  | 3           | 48 $\frac{1}{4}$ "     | 6 $\frac{1}{8}$ " | 49 $\frac{1}{4}$ " | 20"         | 220               | 5,767.00                           |
| 40A-24-3     | 40               | 24       | 4                  | 6           | 48 $\frac{1}{4}$ "     | 6 $\frac{1}{8}$ " | 49 $\frac{1}{4}$ " | 20"         | 220               | 5,993.00                           |
| 40A-27-3     | 40               | 27       | 6                  | 6           | 48 $\frac{1}{4}$ "     | 6 $\frac{1}{8}$ " | 49 $\frac{1}{4}$ " | 20"         | 220               | 7,371.00                           |
| 40A-30-3     | 40               | 30       | 6                  | 6           | 48 $\frac{1}{4}$ "     | 6 $\frac{1}{8}$ " | 49 $\frac{1}{4}$ " | 20"         | 220               | 7,949.00                           |
| 40A-36-3     | 40               | 36       | 6                  | 6           | 48 $\frac{1}{4}$ "     | 6 $\frac{1}{8}$ " | 49 $\frac{1}{4}$ " | 20"         | 220               | 8,602.00                           |
| 50A-3-3      | 48               | 3        | 1                  | 1           | 48 $\frac{3}{4}$ "     | 7"                | 49 $\frac{1}{4}$ " | 24"         | 270               | \$5,921.00                         |
| 50A-6-3      | 48               | 6        | 3                  | 3           | 48 $\frac{3}{4}$ "     | 7"                | 49 $\frac{1}{4}$ " | 24"         | 270               | 5,978.00                           |
| 50A-9-3      | 48               | 9        | 3                  | 3           | 48 $\frac{3}{4}$ "     | 7"                | 49 $\frac{1}{4}$ " | 24"         | 270               | 6,038.00                           |
| 50A-12-3     | 48               | 12       | 3                  | 3           | 48 $\frac{3}{4}$ "     | 7"                | 49 $\frac{1}{4}$ " | 24"         | 270               | 6,213.00                           |
| 50A-13.5-3   | 48               | 13.5     | 3                  | 3           | 48 $\frac{3}{4}$ "     | 7"                | 49 $\frac{1}{4}$ " | 24"         | 270               | 6,237.00                           |
| 50A-15-3     | 48               | 15       | 3                  | 3           | 48 $\frac{3}{4}$ "     | 7"                | 49 $\frac{1}{4}$ " | 24"         | 270               | 6,303.00                           |
| 50A-18-3     | 48               | 18       | 3                  | 3           | 48 $\frac{3}{4}$ "     | 7"                | 49 $\frac{1}{4}$ " | 24"         | 270               | 6,383.00                           |
| 50A-24-3     | 48               | 24       | 4                  | 6           | 48 $\frac{3}{4}$ "     | 7"                | 49 $\frac{1}{4}$ " | 24"         | 270               | 8,410.00                           |
| 50A-27-3     | 48               | 27       | 6                  | 6           | 48 $\frac{3}{4}$ "     | 7"                | 49 $\frac{1}{4}$ " | 24"         | 270               | 8,824.00                           |
| 50A-30-3     | 48               | 30       | 6                  | 6           | 48 $\frac{3}{4}$ "     | 7"                | 49 $\frac{1}{4}$ " | 24"         | 270               | 8,914.00                           |
| 50A-36-3     | 48               | 36       | 6                  | 6           | 48 $\frac{3}{4}$ "     | 7"                | 49 $\frac{1}{4}$ " | 24"         | 270               | 9,179.00                           |
| 50A-45-3     | 48               | 45       | 9                  | 9           | 48 $\frac{3}{4}$ "     | 7"                | 49 $\frac{1}{4}$ " | 24"         | 270               | 10,871.00                          |
| 50A-54-3     | 48               | 54       | 9                  | 9           | 48 $\frac{3}{4}$ "     | 7"                | 49 $\frac{1}{4}$ " | 24"         | 270               | 11,040.00                          |
| 50A-81-3     | 48               | 81       | 9                  | 9           | 48 $\frac{3}{4}$ "     | 7"                | 49 $\frac{1}{4}$ " | 24"         | 270               | 18,185.00                          |

Specify Voltage, Wattage, and Phase when ordering.

All models available in 208, 240, 277 and 480 volt at above prices.

All 277V models are shipped standard single phase. Three phase not available.

INCOLOY® elements standard.

Hand Hole cleanout opening standard, except 6 and 12 gallon models.

T&P relief valve supplied (not installed) with heater.

# Commercial Electric Models

## Commercial ASME Models

2" Non-CFC Foam Insulation



| Model Number | Nom. Cap. (Gal.) | Input kW | Number of Elements |             | Floor to Top of Heater | Floor to CW Inlet | Floor to HW Outlet | Jacket Dia. | Approx. Shpg. Wt. | Limited 3 Year Tank Warranty Price |
|--------------|------------------|----------|--------------------|-------------|------------------------|-------------------|--------------------|-------------|-------------------|------------------------------------|
|              |                  |          | Single Phase       | Three Phase |                        |                   |                    |             |                   |                                    |
| 80A-3-3      | 78               | 3        | 1                  | 1           | 60¼"                   | 7"                | 61¼"               | 26"         | 335               | \$7,285.00                         |
| 80A-6-3      | 78               | 6        | 3                  | 3           | 60¼"                   | 7"                | 61¼"               | 26"         | 335               | 7,355.00                           |
| 80A-9-3      | 78               | 9        | 3                  | 3           | 60¼"                   | 7"                | 61¼"               | 26"         | 335               | 7,355.00                           |
| 80A-12-3     | 78               | 12       | 3                  | 3           | 60¼"                   | 7"                | 61¼"               | 26"         | 335               | 7,404.00                           |
| 80A-13.5-3   | 78               | 13.5     | 3                  | 3           | 60¼"                   | 7"                | 61¼"               | 26"         | 335               | 7,450.00                           |
| 80A-15-3     | 78               | 15       | 3                  | 3           | 60¼"                   | 7"                | 61¼"               | 26"         | 335               | 7,524.00                           |
| 80A-18-3     | 78               | 18       | 3                  | 3           | 60¼"                   | 7"                | 61¼"               | 26"         | 335               | 7,575.00                           |
| 80A-24-3     | 78               | 24       | 4                  | 6           | 60¼"                   | 7"                | 61¼"               | 26"         | 335               | 9,478.00                           |
| 80A-27-3     | 78               | 27       | 6                  | 6           | 60¼"                   | 7"                | 61¼"               | 26"         | 335               | 9,855.00                           |
| 80A-30-3     | 78               | 30       | 6                  | 6           | 60¼"                   | 7"                | 61¼"               | 26"         | 335               | 9,953.00                           |
| 80A-36-3     | 78               | 36       | 6                  | 6           | 60¼"                   | 7"                | 61¼"               | 26"         | 335               | 10,230.00                          |
| 80A-45-3     | 78               | 45       | 9                  | 6           | 60¼"                   | 7"                | 61¼"               | 26"         | 335               | 11,821.00                          |
| 80A-54-3     | 78               | 54       | 9                  | 9           | 60¼"                   | 7"                | 61¼"               | 26"         | 335               | 11,973.00                          |
| 80A-81-3     | 78               | 81       | 9                  | 9           | 60¼"                   | 7"                | 61¼"               | 26"         | 335               | 18,736.00                          |

|             |     |      |   |   |                                  |    |     |                                  |     |            |
|-------------|-----|------|---|---|----------------------------------|----|-----|----------------------------------|-----|------------|
| 120A-3-3    | 119 | 3    | 1 | 1 | 64 <sup>1</sup> / <sub>8</sub> " | 7" | 66" | 30 <sup>1</sup> / <sub>4</sub> " | 430 | \$8,739.00 |
| 120A-6-3    | 119 | 6    | 3 | 3 | 64 <sup>1</sup> / <sub>8</sub> " | 7" | 66" | 30 <sup>1</sup> / <sub>4</sub> " | 430 | 8,828.00   |
| 120A-9-3    | 119 | 9    | 3 | 3 | 64 <sup>1</sup> / <sub>8</sub> " | 7" | 66" | 30 <sup>1</sup> / <sub>4</sub> " | 430 | 8,828.00   |
| 120A-12-3   | 119 | 12   | 3 | 3 | 64 <sup>1</sup> / <sub>8</sub> " | 7" | 66" | 30 <sup>1</sup> / <sub>4</sub> " | 430 | 8,916.00   |
| 120A-13.5-3 | 119 | 13.5 | 3 | 3 | 64 <sup>1</sup> / <sub>8</sub> " | 7" | 66" | 30 <sup>1</sup> / <sub>4</sub> " | 430 | 9,006.00   |
| 120A-15-3   | 119 | 15   | 3 | 3 | 64 <sup>1</sup> / <sub>8</sub> " | 7" | 66" | 30 <sup>1</sup> / <sub>4</sub> " | 430 | 9,099.00   |
| 120A-18-3   | 119 | 18   | 3 | 3 | 64 <sup>1</sup> / <sub>8</sub> " | 7" | 66" | 30 <sup>1</sup> / <sub>4</sub> " | 430 | 9,360.00   |
| 120A-24-3   | 119 | 24   | 4 | 6 | 64 <sup>1</sup> / <sub>8</sub> " | 7" | 66" | 30 <sup>1</sup> / <sub>4</sub> " | 430 | 10,358.00  |
| 120A-27-3   | 119 | 27   | 6 | 6 | 64 <sup>1</sup> / <sub>8</sub> " | 7" | 66" | 30 <sup>1</sup> / <sub>4</sub> " | 430 | 10,752.00  |
| 120A-30-3   | 119 | 30   | 6 | 6 | 64 <sup>1</sup> / <sub>8</sub> " | 7" | 66" | 30 <sup>1</sup> / <sub>4</sub> " | 430 | 10,859.00  |
| 120A-36-3   | 119 | 36   | 6 | 6 | 64 <sup>1</sup> / <sub>8</sub> " | 7" | 66" | 30 <sup>1</sup> / <sub>4</sub> " | 430 | 11,119.00  |
| 120A-45-3   | 119 | 45   | 9 | 9 | 64 <sup>1</sup> / <sub>8</sub> " | 7" | 66" | 30 <sup>1</sup> / <sub>4</sub> " | 430 | 12,627.00  |
| 120A-54-3   | 119 | 54   | 9 | 9 | 64 <sup>1</sup> / <sub>8</sub> " | 7" | 66" | 30 <sup>1</sup> / <sub>4</sub> " | 430 | 12,779.00  |
| 120A-81-3   | 119 | 81   | 9 | 9 | 64 <sup>1</sup> / <sub>8</sub> " | 7" | 66" | 30 <sup>1</sup> / <sub>4</sub> " | 430 | 19,267.00  |

No additional charges for 277 volt or 480 volt.

### Options

|  |          |
|--|----------|
| Low Water Cut-Off Switch . . . . .                 | \$285.00 |
| Safety Door Interlock . . . . .                    | \$510.00 |
| High and Low Pressure Limit Switches . . . . .     | \$485.00 |
| Alarm Horn . . . . .                               | \$545.00 |
| Temperature and Pressure Gauge . . . . .           | \$155.00 |
| Time Delay Step Sequence (24 kW & above) . . . . . | \$353.00 |
| BMS Relay . . . . .                                | \$88.00  |

**NSF Compliance Kit:** P/N 265-44542-04 . . . . . \$75.60



# Commercial Electric Models

## Electric Brute™ Models

### Electric Brute™ Vertical Round

#### Immersion Thermostats

##### VERTICAL ROUND MODELS

Three Year Limited Tank Warranty

Commercial multipliers (CSDs) are not applicable to this product. Please call your local Bradford White sales representative for pricing.



| Volts: 208V, 240V, and 277V |             |             |             |             |             |             |                   |
|-----------------------------|-------------|-------------|-------------|-------------|-------------|-------------|-------------------|
| Model Number                | 12kW        | 15kW        | 18kW        | 30kW        | 36kW        | Max kW Load | Approx. Shpg. Wt. |
| VR-150-(kW)                 | \$19,388.00 | \$19,527.00 | \$19,694.00 | \$20,211.00 | \$20,655.00 | 90          | 650               |
| VR-200-(kW)                 | 20,304.00   | 20,440.00   | 20,610.00   | \$21,084.00 | 21,478.00   | 162         | 750               |
| VR-250-(kW)                 | 20,919.00   | 21,057.00   | 21,224.00   | 21,766.00   | 22,395.00   | 162         | 1165              |
| VR-300-(kW)                 | 22,347.00   | 22,481.00   | 22,653.00   | 23,104.00   | 23,467.00   | 162         | 1350              |
| VR-400-(kW)                 | 26,767.00   | 26,904.00   | 27,072.00   | 27,540.00   | 27,834.00   | 162         | 1590              |
| VR-500-(kW)                 | 31,136.00   | 31,270.00   | 31,442.00   | 31,922.00   | 32,170.00   | 162         | 1700              |
| VR-600-(kW)                 | 36,333.00   | 36,467.00   | 36,639.00   | 37,094.00   | 37,351.00   | 216         | 2010              |
| VR-800-(kW)                 | 42,435.00   | 42,435.00   | 42,601.00   | 43,081.00   | 43,305.00   | 270         | 2450              |
| VR-1000-(kW)                | 47,645.00   | 47,645.00   | 47,818.00   | 48,284.00   | 48,529.00   | 360         | 3160              |
| VR-1250-(kW)                | 49,568.00   | 49,568.00   | 49,568.00   | 50,270.00   | 50,973.00   | 360         | 3792              |
| VR-1500-(kW)                | 54,309.00   | 54,309.00   | 54,309.00   | 55,013.00   | 55,718.00   | 360         | 4550              |
| VR-2000-(kW)                | 70,275.00   | 70,275.00   | 70,275.00   | 71,034.00   | 71,794.00   | 360         | 5460              |
| VR-2500-(kW)                | 75,370.00   | 75,370.00   | 75,370.00   | 76,071.00   | 76,772.00   | 360         | 6553              |

\* Not subject to Commercial Stocking Program

| Volts: 208V, 240V, and 277V |             |             |             |             |             |             |                   |
|-----------------------------|-------------|-------------|-------------|-------------|-------------|-------------|-------------------|
| Model Number                | 45kW        | 54kW        | 60kW        | 72kW        | 90kW        | Max kW Load | Approx. Shpg. Wt. |
| VR-150-(kW)                 | \$21,947.00 | \$23,277.00 | \$23,476.00 | \$24,431.00 | \$25,537.00 | 90          | 650               |
| VR-200-(kW)                 | 23,272.00   | 24,611.00   | 24,801.00   | 25,911.00   | 27,021.00   | 162         | 750               |
| VR-250-(kW)                 | 24,242.00   | 25,580.00   | 25,771.00   | 26,732.00   | 27,932.00   | 162         | 1165              |
| VR-300-(kW)                 | 25,267.00   | 25,491.00   | 26,797.00   | 27,758.00   | 28,881.00   | 162         | 1350              |
| VR-400-(kW)                 | 29,405.00   | 30,739.00   | 30,934.00   | 31,895.00   | 32,944.00   | 162         | 1590              |
| VR-500-(kW)                 | 33,457.00   | 34,785.00   | 34,988.00   | 35,913.00   | 37,005.00   | 162         | 1700              |
| VR-600-(kW)                 | 38,410.00   | 39,741.00   | 39,939.00   | 40,713.00   | 41,541.00   | 216         | 2010              |
| VR-800-(kW)                 | 43,907.00   | 45,253.00   | 46,093.00   | 46,876.00   | 47,602.00   | 270         | 2450              |
| VR-1000-(kW)                | 49,087.00   | 50,306.00   | 51,085.00   | 51,864.00   | 52,614.00   | 360         | 3160              |
| VR-1250-(kW)                | 51,950.00   | 52,928.00   | 53,906.00   | 54,885.00   | 57,361.00   | 360         | 3792              |
| VR-1500-(kW)                | 56,956.00   | 58,194.00   | 59,432.00   | 60,670.00   | 63,147.00   | 360         | 4550              |
| VR-2000-(kW)                | 73,033.00   | 74,271.00   | 75,508.00   | 76,747.00   | 79,223.00   | 360         | 5460              |
| VR-2500-(kW)                | 78,011.00   | 79,248.00   | 80,487.00   | 81,725.00   | 75,302.00   | 360         | 6553              |

\* Not subject to Commercial Stocking Program

These Products Are Net And Not Subject To Performance Incentive Program.

# Commercial Electric Models

## Electric Brute™ Vertical Round



| Volts: 208V, 240V, and 277V |             |             |             |             |             |             |                   |
|-----------------------------|-------------|-------------|-------------|-------------|-------------|-------------|-------------------|
| Model Number                | 108kW       | 120kW       | 135kW       | 144kW       | 162kW       | Max kW Load | Approx. Shpg. Wt. |
| VR-150-(kW)                 | —           | —           | —           | —           | —           | 90          | 650               |
| VR-200-(kW)                 | \$28,880.00 | \$28,403.00 | \$29,436.00 | \$29,999.00 | \$32,753.00 | 162         | 750               |
| VR-250-(kW)                 | 29,628.00   | 29,874.00   | 30,242.00   | 30,725.00   | 33,318.00   | 162         | 1165              |
| VR-300-(kW)                 | 30,744.00   | 30,967.00   | 31,580.00   | 31,821.00   | 34,238.00   | 162         | 1350              |
| VR-400-(kW)                 | 34,789.00   | 35,024.00   | 35,401.00   | 35,969.00   | 38,499.00   | 162         | 1590              |
| VR-500-(kW)                 | 39,625.00   | 39,968.00   | 40,706.00   | 40,353.00   | 43,317.00   | 162         | 1700              |
| VR-600-(kW)                 | 43,320.00   | 43,548.00   | 43,920.00   | 44,055.00   | 47,357.00   | 216         | 2010              |
| VR-800-(kW)                 | 48,967.00   | 49,215.00   | 49,475.00   | 49,726.00   | 52,719.00   | 270         | 2450              |
| VR-1000-(kW)                | 53,867.00   | 54,096.00   | 54,339.00   | 54,581.00   | 54,581.00   | 360         | 3160              |
| VR-1250-(kW)                | 59,836.00   | 61,152.00   | 62,468.00   | 63,784.00   | 66,789.00   | 360         | 3792              |
| VR-1500-(kW)                | 65,622.00   | 67,263.00   | 68,905.00   | 70,550.00   | 72,836.00   | 360         | 4550              |
| VR-2000-(kW)                | 81,698.00   | 83,532.00   | 85,364.00   | 87,198.00   | 89,653.00   | 360         | 5460              |
| VR-2500-(kW)                | 86,676.00   | 87,509.00   | 88,341.00   | 89,176.00   | 89,176.00   | 360         | 6553              |

\*May require additional control box \* Not subject to Commercial Stocking Program

| Volts: 208V, 240V, and 277V |             |             |             |             |             |             |             |             |                   |
|-----------------------------|-------------|-------------|-------------|-------------|-------------|-------------|-------------|-------------|-------------------|
| Model Number                | 180kW       | 216kW       | 252kW       | 270kW       | 288kW       | 324kW       | 360kW       | Max kW Load | Approx. Shpg. Wt. |
| VR-150-(kW)                 | —           | —           | —           | —           | —           | —           | —           | 90          | 650               |
| VR-200-(kW)                 | —           | —           | —           | —           | —           | —           | —           | 162         | 750               |
| VR-250-(kW)                 | —           | —           | —           | —           | —           | —           | —           | 162         | 1165              |
| VR-300-(kW)                 | —           | —           | —           | —           | —           | —           | —           | 162         | 1350              |
| VR-400-(kW)                 | —           | —           | —           | —           | —           | —           | —           | 162         | 1590              |
| VR-500-(kW)                 | —           | —           | —           | —           | —           | —           | —           | 162         | 1700              |
| VR-600-(kW)                 | \$64,503.00 | \$68,813.00 | —           | —           | —           | —           | —           | 216         | 2010              |
| VR-800-(kW)                 | 62,695.00   | 66,718.00   | \$71,385.00 | \$72,555.00 | —           | —           | —           | 270         | 2450              |
| VR-1000-(kW)                | 67,398.00   | 71,788.00   | 77,121.00   | 78,875.00   | \$80,490.00 | \$85,534.00 | —           | 360         | 3160              |
| VR-1250-(kW)                | 69,795.00   | 74,692.00   | 81,054.00   | 82,537.00   | 84,019.00   | 89,548.00   | \$93,505.00 | 360         | 3792              |
| VR-1500-(kW)                | 75,125.00   | 80,477.00   | 85,976.00   | 88,743.00   | 91,498.00   | 95,329.00   | 99,252.00   | 360         | 4550              |
| VR-2000-(kW)                | 92,109.00   | 96,554.00   | 101,871.00  | 104,302.00  | 106,731.00  | 111,407.00  | 118,123.00  | 360         | 5460              |
| VR-2500-(kW)                | 95,747.00   | 101,533.00  | 106,476.00  | 109,176.00  | 111,876.00  | 116,388.00  | 122,320.00  | 360         | 6553              |

\*May require additional control box \* Not subject to Commercial Stocking Program

### Standard Equipment:

- ASME Construction
- 150 psi
- INCOLOY® heating elements
- Internal fusing (above 120 amps)
- Painted steel jacket
- Lifting Lug Access
- Magnesium anode rods
- Immersion Thermostats
- Magnetic contactors
- Manual reset high limit
- Hinged door with keyed lock
- ASME temperature & pressure relief valve
- Approved for 180°F (82.2°C) operation

### Options

- Alarm Bell ..... \$279.00
- BMS Contacts ..... \$243.00
- Manway ..... \$485.00
- Low Water Cut-off (LWCO) ..... \$360.00
- High or Low Water Pressure Switch ..... \$266.00
- Pilot Lights and Switches ..... \$125.00
- Safety Door Interlock ..... \$369.00
- Seismic Bracing ..... \$233.00
- Shunt Trip Disconnect ..... Consult Factory
- Temperature Gauge ..... \$146.00
- Pressure Gauge ..... \$146.00
- Time Clock (24 hour) ..... \$340.00
- Time Clock (7 day) ..... \$605.00
- Double Vitraglas® Lining  
(6-Year Limited Tank Warranty) ..... Consult Factory

### Solid State Step Controls:

- 1-4 steps ..... \$704.00
- 5-8 steps ..... \$1,698.00
- 9-12 steps ..... \$2,746.00

These Products Are Net And Not Subject To Performance Incentive Program.

# Commercial Electric Models

## Electric Brute™ Vertical Round

### Immersion Thermostats

#### VERTICAL ROUND MODELS

Three Year Limited Tank Warranty

Commercial multipliers (CSDs) are not applicable to this product. Please call your local Bradford White sales representative for pricing.



| Volts: 380V, 400V, 415V, 480V and 600V |             |             |             |             |             |             |                   |
|--|-------------|-------------|-------------|-------------|-------------|-------------|-------------------|
| Model Number                           | 12kW        | 15kW        | 18kW        | 30kW        | 36kW        | Max kW Load | Approx. Shpg. Wt. |
| VR-150-(kW)                            | \$18,419.00 | \$18,625.00 | \$18,884.00 | \$19,440.00 | \$19,725.00 | 90          | 650               |
| VR-200-(kW)                            | 19,533.00   | 19,738.00   | 19,997.00   | 20,456.00   | 20,744.00   | 162         | 750               |
| VR-250-(kW)                            | 20,165.00   | 20,370.00   | 20,629.00   | 21,368.00   | 21,665.00   | 162         | 1165              |
| VR-300-(kW)                            | 21,529.00   | 21,734.00   | 21,993.00   | 22,568.00   | 22,924.00   | 162         | 1350              |
| VR-400-(kW)                            | 26,390.00   | 26,595.00   | 26,854.00   | 27,450.00   | 27,712.00   | 162         | 1590              |
| VR-500-(kW)                            | 30,964.00   | 31,170.00   | 31,429.00   | 32,063.00   | 32,327.00   | 162         | 1700              |
| VR-600-(kW)                            | 34,971.00   | 35,178.00   | 35,437.00   | 36,009.00   | 36,263.00   | 216         | 2010              |
| VR-800-(kW)                            | 40,199.00   | 40,199.00   | 40,320.00   | 40,879.00   | 41,133.00   | 270         | 2450              |
| VR-1000-(kW)                           | 45,500.00   | 45,500.00   | 45,615.00   | 46,261.00   | 46,490.00   | 360         | 3160              |
| VR-1250-(kW)                           | 49,323.00   | 49,323.00   | 49,323.00   | 50,034.00   | 50,748.00   | 360         | 3792              |
| VR-1500-(kW)                           | 52,962.00   | 52,962.00   | 52,962.00   | 53,734.00   | 54,508.00   | 360         | 4550              |
| VR-2000-(kW)                           | 67,023.00   | 67,023.00   | 67,023.00   | 68,802.00   | 70,584.00   | 360         | 5460              |
| VR-2500-(kW)                           | 71,985.00   | 71,985.00   | 71,985.00   | 73,774.00   | 75,562.00   | 360         | 6553              |

\* Not subject to Commercial Stocking Program

| Volts: 380V, 400V, 415V, 480V and 600V |             |             |             |             |             |             |                   |
|--|-------------|-------------|-------------|-------------|-------------|-------------|-------------------|
| Model Number                           | 45kW        | 54kW        | 60kW        | 72kW        | 90kW        | Max kW Load | Approx. Shpg. Wt. |
| VR-150-(kW)                            | \$20,422.00 | \$21,041.00 | \$21,644.00 | \$22,553.00 | \$23,100.00 | 90          | 650               |
| VR-200-(kW)                            | 21,973.00   | 22,591.00   | 23,195.00   | 24,020.00   | 24,615.00   | 162         | 750               |
| VR-250-(kW)                            | 23,086.00   | 23,705.00   | 24,309.00   | 25,123.00   | 25,667.00   | 162         | 1165              |
| VR-300-(kW)                            | 24,246.00   | 24,866.00   | 25,469.00   | 26,141.00   | 26,776.00   | 162         | 1350              |
| VR-400-(kW)                            | 28,781.00   | 29,401.00   | 30,003.00   | 30,620.00   | 31,139.00   | 162         | 1590              |
| VR-500-(kW)                            | 33,151.00   | 33,771.00   | 34,373.00   | 35,030.00   | 35,502.00   | 162         | 1700              |
| VR-600-(kW)                            | 37,126.00   | 37,746.00   | 38,349.00   | 38,882.00   | 39,378.00   | 216         | 2010              |
| VR-800-(kW)                            | 41,786.00   | 42,594.00   | 43,158.00   | 43,723.00   | 44,193.00   | 270         | 2450              |
| VR-1000-(kW)                           | 47,069.00   | 48,059.00   | 48,605.00   | 49,175.00   | 49,656.00   | 360         | 3160              |
| VR-1250-(kW)                           | 51,176.00   | 51,605.00   | 52,033.00   | 52,463.00   | 54,334.00   | 360         | 3792              |
| VR-1500-(kW)                           | 55,442.00   | 56,377.00   | 57,313.00   | 58,249.00   | 60,119.00   | 360         | 4550              |
| VR-2000-(kW)                           | 71,519.00   | 72,454.00   | 73,389.00   | 74,325.00   | 76,196.00   | 360         | 5460              |
| VR-2500-(kW)                           | 76,497.00   | 77,432.00   | 78,367.00   | 79,303.00   | 81,175.00   | 360         | 6553              |

\* Not subject to Commercial Stocking Program

Commercial Electric Models

These Products Are Net And Not Subject To Performance Incentive Program.

# Commercial Electric Models

## Electric Brute™ Vertical Round



| Volts: 380V, 400V, 415V, 480V and 600V |             |             |             |             |             |             |                   |
|--|-------------|-------------|-------------|-------------|-------------|-------------|-------------------|
| Model Number                           | 108kW       | 120kW       | 135kW       | 144kW       | 162kW       | Max kW Load | Approx. Shpg. Wt. |
| VR-150-(kW)                            | —           | —           | —           | —           | —           | 90          | 650               |
| VR-200-(kW)                            | \$26,406.00 | \$27,665.00 | \$27,876.00 | \$28,434.00 | \$29,284.00 | 162         | 750               |
| VR-250-(kW)                            | 27,497.00   | 27,644.00   | 27,853.00   | 28,400.00   | 30,064.00   | 162         | 1165              |
| VR-300-(kW)                            | 28,410.00   | 28,557.00   | 28,768.00   | 29,148.00   | 31,126.00   | 162         | 1350              |
| VR-400-(kW)                            | 32,486.00   | 32,633.00   | 32,844.00   | 33,399.00   | 35,387.00   | 162         | 1590              |
| VR-500-(kW)                            | 36,774.00   | 36,921.00   | 37,130.00   | 37,623.00   | 39,799.00   | 162         | 1700              |
| VR-600-(kW)                            | 40,710.00   | 40,856.00   | 41,067.00   | 41,449.00   | 43,677.00   | 216         | 2010              |
| VR-800-(kW)                            | 45,491.00   | 45,771.00   | 46,054.00   | 46,344.00   | 48,579.00   | 270         | 2450              |
| VR-1000-(kW)                           | 51,511.00   | 51,783.00   | 52,070.00   | 52,351.00   | 54,608.00   | 360         | 3160              |
| VR-1250-(kW)                           | 55,344.00   | 55,779.00   | 56,215.00   | 56,651.00   | 61,843.00   | 360         | 3792              |
| VR-1500-(kW)                           | 61,129.00   | 61,959.00   | 62,789.00   | 63,621.00   | 66,071.00   | 360         | 4550              |
| VR-2000-(kW)                           | 77,205.00   | 78,420.00   | 79,635.00   | 80,850.00   | 83,218.00   | 360         | 5460              |
| VR-2500-(kW)                           | 81,999.00   | 82,808.00   | 83,617.00   | 84,427.00   | 87,962.00   | 360         | 6553              |

\*May require additional control box \* Not subject to Commercial Stocking Program

| Volts: 380V, 400V, 415V, 480V and 600V |             |             |             |             |             |             |             |             |                   |
|--|-------------|-------------|-------------|-------------|-------------|-------------|-------------|-------------|-------------------|
| Model Number                           | 180kW       | 216kW       | 252kW       | 270kW       | 288kW       | 324kW       | 360kW       | Max kW Load | Approx. Shpg. Wt. |
| VR-150-(kW)                            | —           | —           | —           | —           | —           | —           | —           | 90          | 650               |
| VR-200-(kW)                            | —           | —           | —           | —           | —           | —           | —           | 162         | 750               |
| VR-250-(kW)                            | —           | —           | —           | —           | —           | —           | —           | 162         | 1165              |
| VR-300-(kW)                            | —           | —           | —           | —           | —           | —           | —           | 162         | 1350              |
| VR-400-(kW)                            | —           | —           | —           | —           | —           | —           | —           | 162         | 1590              |
| VR-500-(kW)                            | —           | —           | —           | —           | —           | —           | —           | 162         | 1700              |
| VR-600-(kW)                            | \$52,573.00 | \$55,112.00 | —           | —           | —           | —           | —           | 216         | 2010              |
| VR-800-(kW)                            | 57,414.00   | 60,278.00   | \$64,076.00 | \$65,380.00 | —           | —           | —           | 270         | 2450              |
| VR-1000-(kW)                           | 63,657.00   | 66,303.00   | 70,129.00   | 71,460.00   | \$72,887.00 | \$76,609.00 | \$79,230.00 | 360         | 3160              |
| VR-1250-(kW)                           | 67,035.00   | 70,185.00   | 74,390.00   | 75,903.00   | 77,417.00   | 80,744.00   | 85,037.00   | 360         | 3792              |
| VR-1500-(kW)                           | 68,522.00   | 74,829.00   | 77,845.00   | 79,781.00   | 81,717.00   | 86,530.00   | 91,008.00   | 360         | 4550              |
| VR-2000-(kW)                           | 85,588.00   | 90,906.00   | 95,166.00   | 96,796.00   | 98,427.00   | 102,606.00  | 107,292.00  | 360         | 5460              |
| VR-2500-(kW)                           | 91,498.00   | 95,883.00   | 99,649.00   | 101,450.00  | 103,250.00  | 107,585.00  | 112,896.00  | 360         | 6553              |

\* May require additional control box \* Not subject to Commercial Stocking Program

### Standard Equipment:

- ASME Construction
- 150 psi
- INCOLOY® heating elements
- Internal fusing (above 120 amps)
- Painted steel jacket
- Lifting Lug Access
- Magnesium anode rods
- Immersion Thermostats
- Magnetic contactors
- Manual reset high limit
- Hinged door with keyed lock
- ASME temperature & pressure relief valve
- Approved for 180°F (82.2°C) operation

### Options

- Alarm Bell ..... \$279.00
- BMS Contacts ..... \$243.00
- Manway ..... \$485.00
- Low Water Cut-off (LWCO) ..... \$360.00
- High or Low Water Pressure Switch ..... \$266.00
- Pilot Lights and Switches ..... \$125.00
- Safety Door Interlock ..... \$369.00
- Seismic Bracing ..... \$233.00
- Shunt Trip Disconnect ..... Consult Factory
- Temperature Gauge ..... \$146.00
- Pressure Gauge ..... \$146.00
- Time Clock (24 hour) ..... \$340.00
- Time Clock (7 day) ..... \$605.00
- Double Vitraglas® Lining  
(6-Year Limited Tank Warranty) ..... Consult Factory

### Solid State Step Controls:

- 1-4 steps ..... \$704.00
- 5-8 steps ..... \$1,698.00
- 9-12 steps ..... \$2,746.00

These Products Are Net And Not Subject To Performance Incentive Program.

# Commercial Indirect-Fired Models/Commercial Storage Tanks

## Indirect Fired Models



### PowerStor Series™ Single-Wall Indirect Models

2" Non-CFC Foam Insulation

| Model Number | Nominal Capacity (Gal.) | First Hour Rating @ 135°F (Gal.) | AHRI Rating Continuous Draw @ 135°F Gal./Hr. | Floor to Top of Heater | Floor to Water Conn. | Jacket Dia. | Head Loss @ 8GPM | Approx. Shpg. Wt. | Limited Tank Warranty |
|--------------|-------------------------|----------------------------------|--|------------------------|----------------------|-------------|------------------|-------------------|-----------------------|
|              |                         |                                  |  |                        |                      |             |                  |                   | Lifetime              |
| SW-65C-5     | 54                      | 405                              | 370  | 59 1/4"                | 60"                  | 22"         | 1.63 ft.         | 273               | \$1,240.00            |
| SW-80C-5     | 67                      | 415                              | 370  | 59"                    | 59 3/4"              | 24"         | 1.63 ft.         | 300               | 1,380.00              |
| SW-120C-5    | 107                     | 445                              | 370  | 62 1/2"                | 63 1/4"              | 28 1/4"     | 1.63 ft.         | 422               | 1,900.00              |

Immersed Aquastat

Note: These certified ratings were obtained with a heat source output of 245,000 BTU/Hr, a flow rate of 14.0 GPM, and a 180°F boiler water supply temperature

\* Not subject to Commercial Stocking Program

These Products Are Net And Not Subject To Performance Incentive Program.

## Storage Tank Models



### Commercial Jacketed Storage Tanks - Non-ASME

2" Non-CFC Foam Insulation

| Model Number | Nom. Cap. (Gal.) | Floor to Top of Heater | Floor to Hot Water Conn. | Jacket Dia. | Floor to Bottom Circ. Conn. | Floor to Aquastat. & Top Circ. Conn. | Water Conn. Size | Approx. Shpg. Wt. | Limited 5 Year Tank Warranty Price |
|--------------|------------------|------------------------|--------------------------|-------------|-----------------------------|--------------------------------------|------------------|-------------------|------------------------------------|
| M-3-ST-80R5  | 80               | 58 3/4"                | 59 3/4"                  | 24"         | 9 1/4"                      | 14 1/4"                              | 2" (F&T)         | 192               | \$1,250.00                         |
| M-3-ST-120R5 | 119              | 62 1/2"                | 63 1/2"                  | 28"         | 9 1/2"                      | 14 1/2"                              | 2" (F, T & R)    | 312               | 1,385.00                           |

Hand Hole cleanout standard on M-3-ST-80R5.

F=Front water connections. R=Rear water connections.

T=Top Hot Outlet

### Commercial Jacketed Storage Tanks - ASME

2" Non-CFC Foam Insulation

| Model Number  | Nom. Cap. (Gal.) | Floor to Top of Heater | Floor to Hot Water Conn. | Jacket Dia. | Floor to Bottom Circ. Conn. | Floor to Aquastat. & Top Circ. Conn. | Water Conn. Size   | Approx. Shpg. Wt. | Limited 5 Year Tank Warranty Price |
|---------------|------------------|------------------------|--------------------------|-------------|-----------------------------|--------------------------------------|--------------------|-------------------|------------------------------------|
| M-3-ST-80R5A  | 80               | 58 3/4"                | 59 3/4"                  | 24"         | 9 1/4"                      | 14 1/4"                              | 2" (F&T)           | 278               | \$2,260.00                         |
| M-3-ST-120R5A | 119              | 62 1/2"                | 63 1/2"                  | 28"         | 9 1/2"                      | 14 1/2"                              | 2 1/2" (F), 2" (R) | 366               | 2,550.00                           |
| M-3-ST-200R5A | 200              | 77"                    | 78"                      | 32"         | 11 1/4"                     | 16 1/4"                              | 2 1/2" (F&T)       | 633               | 3,970.00                           |

Hand Hole cleanout standard.

F=Front water connections. R=Rear water connections.

T=Top Hot Outlet

#### Product Options

| Product Options  | Dash#  | Add     |
|--|--------|---------|
| ■ 2" Connections in brass (Except M-3-ST-200R5A)                           | (-869) | \$64.00 |
| ■ 2 1/2" Connections in brass, M-3-ST-120R5A and M-3-ST-200R5A models only | (-870) | \$76.00 |
| ■ Hand Hole cleanout option, M-3-ST-120R5 model only                       | (-874) | \$58.00 |

# Commercial Storage Tanks

## Large Volume Storage Tank Models



**LARGE VOLUME JACKETED, UNJACKETED,  
AND TOP COAT MODELS  
WITH GALLON CAPACITIES RANGING FROM 193 TO 6,138 GALLONS.**

## Warranty Information

| Commercial Large Tank Models   | Limited Tank Warranty | Limited Parts Warranty |
|--|-----------------------|------------------------|
| Commercial Glass-lined large volume storage tanks (Bare, Jacketed, and Top Coated models)        | 5 Year                | 1 Year                 |
| Commercial Double Glass-lines large volume storage tanks (Bare, Jacketed, and Top Coated models) | 10 Year               | 1 Year                 |

## Product Selection & Crossover Information

### Vessel Dimensions

The **Actual Capacity** listed in this Schedule refer to the actual measurements of the storage actual vessel. They do not include added size of jacketing, insulation, base rings, or cradles. The area inside the blue dashed lines in the drawing on the next page represent the **Vessel Dimensions**. These dimensions can be useful when crossing over other brands of tanks. Please refer to the Specification Sheet for the overall dimensions of the tank.

### Nominal Capacity vs. Actual Capacity

The **Nominal Capacity** of a storage tank is the internal capacity of a cylinder based on the diameter and length of the tank. The **Nominal Capacity** assumes the ends of the tank (also referred to as "heads") are flat. The **Nominal Capacity** includes the blue and white shaded portions of tank drawing on the next page.

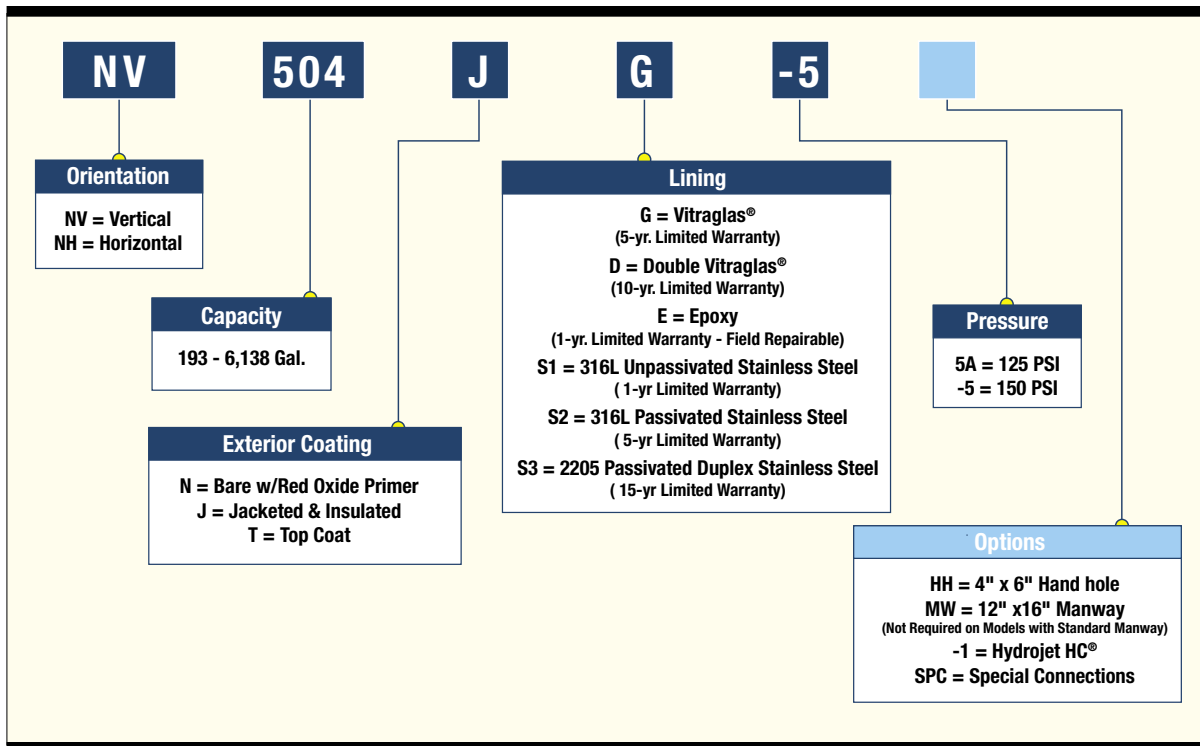
The **Actual Capacity** of a storage tank factors in the rounded shape of the tank heads, and represents the tank's true capacity. The white area in the tank drawing on the next page shows the tank's **Actual Capacity**.

These Products Are Net And Not Subject To Performance Incentive Program.

# Commercial Storage Tanks

## Storage Tank Model Number Structure

This is a Vertical 504-Gallon, Jacketed & Insulated, 150 PSI model



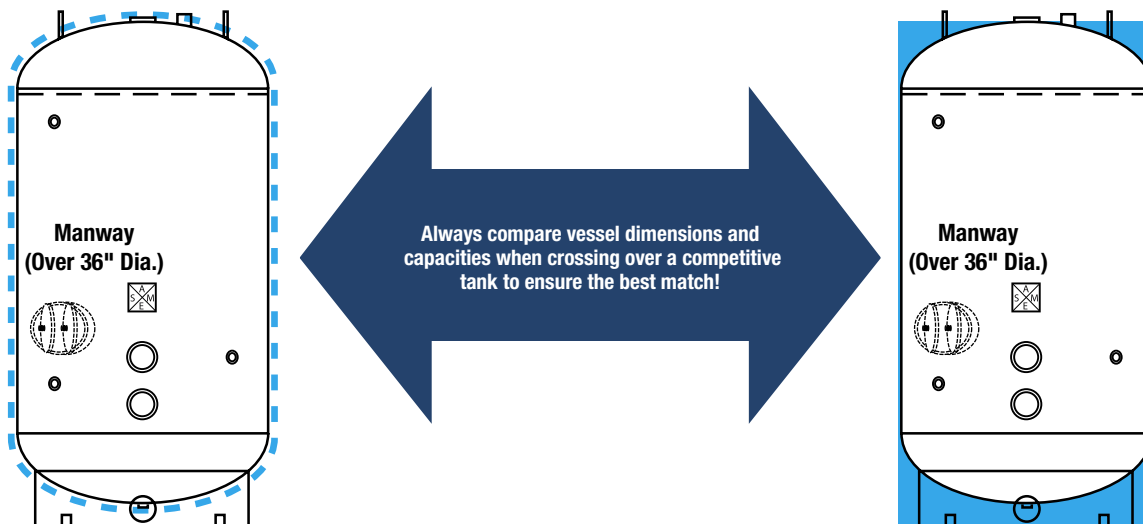
### Pricing:

- To calculate the List Price of a tank with 150 psi Rating, or Top Coat or Double Vitrageglas® Lining options, select the appropriate List Price adder for the option, and add it to the List Price of the tank.
- Use the Tank Price Worksheet to calculate the total List Price and proper Model Designator.

### Ordering

- Large Volume Storage Tanks must be ordered on a separate Purchase Order, and cannot be combined with other Bradford White Products.
- When changing the quantity or locations of tank connections, clearly draw and label the location on the Tank Dimension Template, and submit with the Purchase Order. An Engineering Drawing will be sent to the distributor for signed customer approval. Custom Tank Orders are finalized and scheduled upon receipt of customer-approved Engineering Drawing to Order Service.
- Custom tanks cannot be modified or cancelled after the customer approved Engineering Drawing has been returned to Order Service.
- Custom tanks cannot be returned to Bradford White Corporation.

# Commercial Storage Tanks



## Standard Features:

- **Bare Tanks** Feature Heavy gauge steel primed in red oxide color
- **Water Connections:** Heater Supply, Heater Return, ¼" NPT Aquastat, 1¼" NPT Relief Valve, 1" NPT Drain (Horizontal models include two additional 3" NPT fittings)
- **12" x 16" Manway is standard & included on all tanks with Vessel Diameter of 42" or larger.**
- **Base Ring:** Standard on Vertical Models
- **Vitraglas®-lined** Carcon Steel tanks include 5-Year Limited Tank Warranty, & 1-Year Limited Warranty on Component Parts.
- **Magnesium Anode Rods:** provide additional corrosion resistance for trouble-free service
- **Maximum Storage Temperature** of Potable Water up to 180° F
- All tanks are Constructed and certified in accordance with ASME Sect. IV, Part HLW for 125 psi

## Optional Equipment:

- **Jacketed & Insulated Tanks:** Features Steel Jacket with 2", R-12 Rated High Density Non-CFC Foam Insulation.
- **Top Coated Tanks:** Spayed-on rigid Top Coat polyurethane insulation, 2½", R-16 Rated layer of high density foam insulation is formulated to withstand extreme weather and a full range of conditions
- **Double Vitraglas® Lining:** Adds an additional layer of protective coating for added corrosion resistance. All Double Vitraglas® tanks include 10-Year Limited Tank Warranty & 1-Year Limited Warranty on Component Parts.
- **150 psi** Models constructed and certified in accordance with ASME Sect. IV, Part HLW for **150 psi**.
- **Optional Lift Lugs:** Inc. 2 lugs on top of tank allow connection to rigging without removal of jacket components.
- **Hydrojet HC®:** Stainless steel, dielectrically isolated recirculation tube minimizes turbulence, resulting in greater draw-down capacity from the tank - Available Only With Standard 3" NPT Heater Supply Fitting.
- **Additional / Custom Water Connections:** (NPT or Flanged)
- **Hand Hole Cleanout and Manway:** 4" x 6" Hand Hole cleanout and 12" x 16" Manway opening allows removal of sediment and inspection of interior surface (See "Standard Features" for availability).

These Products Are Net And Not Subject To Performance Incentive Program.



# Commercial Storage Tanks

Commercial multipliers (CSDs) are not applicable to this product. Please call your local Bradford White sales representative for pricing.

| Model Number | Vessel Dimensions (in.) <sup>1</sup> | Tank Capacity (Gal.) | Price                       |   |   | List Price Adders                                     |                                 |
|--------------|--------------------------------------|----------------------|-----------------------------|---|---|---|---------------------------------|
|              |                                      |                      | Bare Vitraglas® Lined Tanks | Insulated & Top Coat Vitraglas® Lined Tanks | Jacketed & Insulated Vitraglas® Lined Tanks | Double Vitraglas® Lined Tanks (Add to Tanklist Price) | 150 psi (Add to Tanklist Price) |
| NV193†G5A    | 30 X 67                              | 193                  | \$5,911.00                  | \$7,453.00                                  | \$8,435.00                                  | \$1,215.00  | \$1,004.00                      |
| NV229†G5A    | 30 X 79                              | 229                  | \$6,134.00                  | \$7,957.00                                  | \$8,854.00                                  |   |                                 |
| NV260†G5A    | 30 X 89                              | 260                  | \$6,402.00                  | \$8,462.00                                  | \$9,476.00                                  |   |                                 |
| NV303†G5A    | 30 X 103                             | 303                  | \$6,712.00                  | \$9,081.00                                  | \$10,700.00                                 |   |                                 |
| NV340†G5A    | 30 X 115                             | 340                  | \$6,955.00                  | \$9,564.00                                  | \$10,481.00                                 |   |                                 |
| NV318†G5A    | 36 X 76                              | 318                  | \$7,394.00                  | \$9,454.00                                  | \$11,093.00                                 | \$1,663.00  | \$1,004.00                      |
| NV344†G5A    | 36 X 82                              | 344                  | \$7,588.00                  | \$9,854.00                                  | \$11,087.00                                 |   |                                 |
| NV375†G5A    | 36 X 89                              | 375                  | \$7,938.00                  | \$10,410.00                                 | \$11,557.00                                 |   |                                 |
| NV397†G5A    | 36 X 94                              | 397                  | \$8,065.00                  | \$10,640.00                                 | \$12,360.00                                 |   |                                 |
| NV449†G5A    | 36 X 106                             | 449                  | \$8,432.00                  | \$11,352.00                                 | \$13,013.00                                 |   |                                 |
| NV502†G5A    | 36 X 118                             | 502                  | \$8,743.00                  | \$12,003.00                                 | \$13,567.00                                 | \$2,187.00  | \$1,367.00                      |
| NV555†G5A    | 36 X 130                             | 555                  | \$9,107.00                  | \$12,680.00                                 | \$14,217.00                                 |   |                                 |
| NV432†G5A    | 46 X 80                              | 432                  | \$9,650.00                  | \$12,208.00                                 | \$13,794.00                                 |   |                                 |
| NV486†G5A    | 42 X 85                              | 486                  | \$9,926.00                  | \$12,673.00                                 | \$14,232.00                                 |   |                                 |
| NV504†G5A    | 42 X 88                              | 504                  | \$10,188.00                 | \$13,038.00                                 | \$14,494.00                                 |   |                                 |
| NV558†G5A    | 42 X 97                              | 558                  | \$10,459.00                 | \$13,582.00                                 | \$15,784.00                                 | \$2,991.00  | \$1,367.00                      |
| NV630†G5A    | 42 X 109                             | 630                  | \$10,875.00                 | \$14,449.00                                 | \$16,586.00                                 |   |                                 |
| NV702†G5A    | 42 X 121                             | 702                  | \$11,235.00                 | \$15,118.00                                 | \$17,237.00                                 |   |                                 |
| NV774†G5A    | 42 X 133                             | 774                  | \$11,648.00                 | \$15,812.00                                 | \$17,983.00                                 |   |                                 |
| NV834†G5A    | 42 X 143                             | 834                  | \$12,026.00                 | \$16,594.00                                 | \$18,694.00                                 |   |                                 |
| NV572†G5A    | 48 X 77                              | 572                  | \$11,965.00                 | \$14,815.00                                 | \$16,784.00                                 | \$2,991.00  | \$1,367.00                      |
| NV658†G5A    | 42 X 88                              | 658                  | \$12,668.00                 | \$15,929.00                                 | \$18,295.00                                 |   |                                 |
| NV752†G5A    | 48 X 100                             | 752                  | \$13,659.00                 | \$17,336.00                                 | \$20,207.00                                 |   |                                 |
| NV846†G5A    | 48 X 112                             | 846                  | \$14,469.00                 | \$18,591.00                                 | \$20,503.00                                 |   |                                 |
| NV940†G5A    | 48 X 124                             | 940                  | \$15,773.00                 | \$20,308.00                                 | \$24,049.00                                 |   |                                 |
| NV1128†G5A   | 48 X 145                             | 1,128                | \$17,456.00                 | \$22,746.00                                 | \$24,080.00                                 |   |                                 |

Refer to page 53 for Optional Configurations and connections

■ Denotes Vitraglas® and Double Vitraglas®-lined tank sizes with standard 12" x 16" manway

**Tank Style:**

**NV** = Vertical

**NH** = Horizontal (for horizontal tanks change "NV" to "NH" and add saddles from options pricing)

† **Tank Exterior:**

**N** = Red oxide primer

**T** = Top coat (requires list price adder)

**J** = Jacketed & Insulated (use jacketed & insulated tank price)

**Tank Lining:**

**G** = Vitraglas®

**D** = Double Vitraglas® (requires list price adder)

**E** = Epoxy (contact factory for pricing)

**S** = Stainless Steel (contact factory for pricing)

**S1** = 316L Unpassivated Stainless Steel (contact factory for pricing)

**S2** = 316L Passivated Stainless Steel (contact factory for pricing)

**S3** = 2205 Passivated Duplex Stainless Steel (contact factory for pricing)

**Pressure Rating:**

**5A** = 125 psi

**-5** = 150 psi (requires list price adder)

<sup>1</sup> **Vessel Dimensions** are for storage only, and do not include base rings, saddles, Top Coat or Jacket & Insulation.

See spec sheet for overall dimensions.

These Products Are Net And Not Subject To Performance Incentive Program.

# Commercial Storage Tanks

Commercial multipliers (CSDs) are not applicable to this product. Please call your local Bradford White sales representative for pricing.

| Model Number | Vessel Dimensions (in.) <sup>1</sup> | Tank Capacity (Gal.) | Price                       |   |   | List Price Adders                                     |                                 |
|--------------|--------------------------------------|----------------------|-----------------------------|---|---|---|---------------------------------|
|              |                                      |                      | Bare Vitraglas® Lined Tanks | Insulated & Top Coat Vitraglas® Lined Tanks | Jacketed & Insulated Vitraglas® Lined Tanks | Double Vitraglas® Lined Tanks (Add to Tanklist Price) | 150 psi (Add to Tanklist Price) |
| NV1306†G5A   | 48 X 174                             | 1,306                | \$19,272.00                 | \$25,544.00                                 | N/A   | \$5,562.00  | \$2,453.00                      |
| NV981†G5A    | 54 X 105                             | 981                  | \$20,704.00                 | \$24,958.00                                 | N/A   |   |                                 |
| NV1119†G5A   | 54 X 119                             | 1,119                | \$21,803.00                 | \$26,538.00                                 | \$35,041.00                                 |   |                                 |
| NV1219†G5A   | 54 X 129                             | 1,219                | \$22,672.00                 | \$27,890.00                                 | N/A   |   |                                 |
| NV1327†G5A   | 54 X 140                             | 1,327                | \$24,807.00                 | \$30,591.00                                 | N/A   |   |                                 |
| NV1457†G5A   | 54 X 153                             | 1,457                | \$25,367.00                 | \$31,577.00                                 | N/A   |   |                                 |
| NV1635†G5A   | 54 X 171                             | 1,635                | \$26,920.00                 | \$33,873.00                                 | N/A   |   |                                 |
| NV1814†G5A   | 54 X 189                             | 1,814                | \$28,120.00                 | \$35,774.00                                 | N/A   | \$6,897.00  | \$2,593.00                      |
| NV1395†G5A   | 60 X 120                             | 1,395                | \$28,950.00                 | \$34,338.00                                 | \$44,864.00                                 |   |                                 |
| NV1689†G5A   | 60 X 144                             | 1,689                | \$31,929.00                 | \$38,415.00                                 | \$48,438.00                                 |   |                                 |
| NV1983†G5A   | 60 X 174                             | 1,983                | \$34,592.00                 | \$42,418.00                                 | N/A   |   |                                 |
| NV2165†G5A   | 60 X 183                             | 2,165                | \$37,082.00                 | \$45,481.00                                 | N/A   |   |                                 |
| NV2276†G5A   | 60 X 192                             | 2,276                | \$37,868.00                 | \$46,516.00                                 | N/A   |   |                                 |
| NV2570†G5A   | 60 X 216                             | 2,570                | \$40,766.00                 | \$50,477.00                                 | N/A   |   |                                 |
| NV1761†G5A   | 72 X 106                             | 1,761                | \$31,269.00                 | \$37,165.00                                 | N/A   | \$9,567.00  | Contact Factory for Pricing     |
| NV2061†G5A   | 72X 123                              | 2,061                | \$33,939.00                 | \$40,725.00                                 | N/A   |   |                                 |
| NV2115†G5A   | 72 X 126                             | 2,115                | \$34,396.00                 | \$41,189.00                                 | N/A   |   |                                 |
| NV2256†G5A   | 72 X 134                             | 2,256                | \$34,701.00                 | \$41,932.00                                 | N/A   |   |                                 |
| NV2538†G5A   | 72 X 150                             | 2,538                | \$38,011.00                 | \$46,104.00                                 | N/A   |   |                                 |
| NV2765†G5A   | 72 X 163                             | 2,765                | \$39,919.00                 | \$48,617.00                                 | N/A   |   |                                 |
| NV2959†G5A   | 72 X 174                             | 2,959                | \$41,487.00                 | \$50,890.00                                 | N/A   |   |                                 |
| NV3382†G5A   | 72 X 198                             | 3,382                | \$45,966.00                 | \$56,642.00                                 | N/A   |   |                                 |
| NV3805†G5A   | 72 X 222                             | 3,805                | \$49,117.00                 | \$61,088.00                                 | N/A   |   |                                 |
| NV4404†G5A   | 72 X 256                             | 4,404                | \$53,703.00                 | \$67,498.00                                 | N/A   |   |                                 |
| NV2901†G5A   | 84 X 127                             | 2,901                | \$47,444.00                 | \$55,565.00                                 | N/A   | \$11,346.00   | Contact Factory for Pricing     |
| NV3308†G5A   | 84 X 144                             | 3,308                | \$52,505.00                 | \$61,071.00                                 | N/A   |   |                                 |
| NV3884†G5A   | 84 X 168                             | 3,884                | \$57,622.00                 | \$67,695.00                                 | N/A   |   |                                 |
| NV4459†G5A   | 84 X 192                             | 4,459                | \$61,182.00                 | \$72,751.00                                 | N/A   |   |                                 |
| NV5038†G5A   | 84 X 216                             | 5,038                | \$66,460.00                 | \$79,420.00                                 | N/A   |   |                                 |
| NV6138†G5A   | 84 X 262                             | 6,138                | \$74,960.00                 | \$90,655.00                                 | N/A   |   |                                 |

Refer to page 53 for Optional Configurations and connections

■ Denotes Vitraglas® and Double Vitraglas®-lined tank sizes with standard 12" x 16" manway

**Tank Style:**

NV = Vertical

NH = Horizontal (for horizontal tanks change "NV" to "NH" and add saddles from options pricing)

† **Tank Exterior:**

N = Red oxide primer

T = Top coat (requires list price adder)

J = Jacketed & Insulated (use jacketed & insulated tank price)

**Tank Lining:**

G = Vitraglas®

D = Double Vitraglas® (requires list price adder)

E = Epoxy (contact factory for pricing)

S = Stainless Steel (contact factory for pricing)

S1 = 316L Unpassivated Stainless Steel (contact factory for pricing)

S2 = 316L Passivated Stainless Steel (contact factory for pricing)

S3 = 2205 Passivated Duplex Stainless Steel (contact factory for pricing)

**Pressure Rating:**

5A = 125 psi

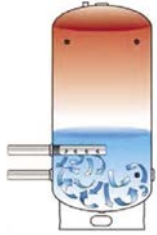
-5 = 150 psi (requires list price adder)

1 **Vessel Dimensions** are for storage only, and do not include base rings, saddles, Top Coat or Jacket & Insulation. See spec sheet for overall dimensions.

These Products Are Net And Not Subject To Performance Incentive Program.

# Commercial Storage Tanks

## Tank Options: Add Designator to Tank Model Number to Order



| Description  | Designator                                 | List Price                |            |
|--|--|---------------------------|------------|
|  |  | Jacketed / Top Coat Tanks | Bare Tanks |
| Hand Hole Clean-out (4" x 6")  | "HH"                                       | \$524.00                  | \$394.00   |
| 12" x 16" Manway <sup>1</sup>  | "MW"                                       | \$1,102.00                | \$767.00   |
| Hydrojet HC®—Stainless steel, dielectrically isolated recirculation tube (Available only with standard 3"NPT Heater Supply connection) | "-1"                                       | \$356.00                  | \$356.00   |
| <b>Tank Saddles - Required for Horizontal Tanks (Includes Two 9' welded Saddles)</b>   | <b>Use "NH" Designator in Model Number</b> |                           |            |
| Vessel Diameter  | 30" & 36"                                  | \$522.00                  |            |
|  | 42", 48", & 54"                            | \$1,270.00                |            |
|  | 60", 72", 84"                              | \$2,313.00                |            |

<sup>1</sup>Manway is standard & included in List Price on 42" through 72" Diameter vessels

The Hydrojet HC® Recirculation Tube threads into 3" NPT tank fittings, and diffuses the flow of water entering the tank. The unique design minimizes turbulence, resulting in greater draw-down capacity from the tank.

## Optional: Optional Fittings, Flanges, & Accessories

Order as separate line items on PO

Use Custom Tank Template to specify type, quantity and location of optional Fittings, Flanges, & Connections.



OPTIONAL NPT FITTINGS



OPTIONAL FLANGED CONNECTIONS

| Optional NPT Fittings List Price |                           |            | Optional Flanged Connections |                           |            |
|----------------------------------|---------------------------|------------|------------------------------|---------------------------|------------|
| Size / Type                      | List Price                |            | Size / Type                  | List Price                |            |
|                                  | Jacketed / Top Coat Tanks | Bare Tanks |                              | Jacketed / Top Coat Tanks | Bare Tanks |
| ¾" NPT                           | \$146.00                  | \$113.00   | 4" Flange                    | \$427.00                  | \$324.00   |
| 1" NPT                           | \$151.00                  | \$119.00   | 6" Flange                    | \$545.00                  | \$454.00   |
| 1¼" NPT                          | \$157.00                  | \$124.00   | 8" Flange                    | \$886.00                  | \$605.00   |
| 1½" NPT                          | \$221.00                  | \$157.00   | 10" Flange                   | \$1,388.00                | \$1,026.00 |
| 2" NPT                           | \$232.00                  | \$162.00   | 12" Flange                   | \$2,225.00                | \$1,361.00 |
| 2½" NPT                          | \$254.00                  | \$189.00   | 14" Flange                   | \$1,102.00                | \$1,674.00 |
| 3" NPT                           | \$286.00                  | \$221.00   |                              |                           |            |
| 4" NPT                           | \$475.00                  | \$421.00   |                              |                           |            |

|   | List Price                |            |
|---|---------------------------|------------|
|   | Jacketed / Top Coat Tanks | Bare Tanks |
| <b>Seismic Clips</b><br>Can be added when Seismic Certification of the tanks is required. Seismic Clips vary by the size and configuration of tank. To ensure certification for the proper seismic zone, please include the address where the tank is to be installed on the Custom Tank Template.              | \$400.00                  | \$400.00   |
| <b>Extended Lift Lugs</b><br>Protrude through the top jacket panel of Jacketed & Insulated storage tanks, providing a convenient lift point. Extended Lift Lugs are optional on Jacketed & Insulated tanks, and standard on Bare and Top Coat tanks. List Price Adder includes two Extended Lift Lugs per tank. | \$162.00                  | Included   |
| <b>Stainless Steel Fittings</b><br>Standard NPT tank fittings constructed of stainless steel. Consult Factory for additional or upsized Stainless Steel Fittings.   | \$1,863.00                |            |

These Products Are Net And Not Subject To Performance Incentive Program.





Built to be the Best™

# WE'RE HERE FOR THE PRO.

## And We Mean It.

At Bradford White, our business is being there for your business. Our job is to help you serve the needs of contractors, installers and specifying engineers.

*And that's not just talk - we stand behind you every day.*

**When you sell Bradford White, you can always count on getting:**

**Built to be the Best™** water heaters, boilers and tanks that deliver top quality, high performance and unmatched reliability.

**Marketing Materials** to help you communicate with your professional customers and prospects more effectively than ever before.

**Unparalleled Tech Sales Support**, so you have all the resources you need to make sure the needs of your customers are met.

**Our Exclusive For The Pro® Website** - full of tools to help you build your business and ensure your success.



Visit [bwforthepro.com](http://bwforthepro.com) to learn more!





— BRADFORD WHITE IS —  
**AMERICAN  
STRONG**

CPB-030419

[www.bradfordwhite.com](http://www.bradfordwhite.com)

©2019, Bradford White Corporation. All rights reserved.