

BRADFORD WHITE
WHOLESALE
RESIDENTIAL
PRICE SCHEDULE

EFFECTIVE DATE
OCTOBER 18, 2018



What American Strong means to Bradford White.



American Pride has always been in everything we do. Bradford White began over 135 years ago with a simple vision, to deliver high quality, superior products made by American craftspeople.

We are committed to American manufacturing. We are an American-owned company, with all our manufacturing facilities located in the United States. Bradford White proudly employs over 1,500 people at our American facilities.

We proudly support the professional. At Bradford White, we focus on the professional. Our quality product deserves a quality installation.

American Strong...around the world. Bradford White products are available to professionals around the world. For example, our Halton Hills, ON sales, training and distribution center provides full support to our Canadian customers.

Built to be the Best™. Bradford White proudly brings American ingenuity and quality to customers around the world. By combining American Strong manufacturing with select components and products sourced from top international partners, the result is all Bradford White products are Built to be the Best™ - now and in the future.

Index

Terms of Sale 3

- General Information
- Freight Policy

Warranty Information 4

New Model Number Naming Structure 5

Residential Gas Models

- Atmospheric Vent Fan Assist Models 6
- Atmospheric Vent Damper Models 6
- Atmospheric Vent Models 7
- Atmospheric Vent High Input Models 7
- Direct Vent Models 8
- High Efficiency eF Series® Power Vent 9
- Power Vent (TTW®) Models 9
- Power Direct Vent Models 9
- Manufactured Home Closed Combustion/Direct Vent 10
- Manufactured Home Open Combustion/Atmospheric Vent 10
- Ultra Low NOx Atmospheric Vent Damper Models 10
- Ultra Low NOx Atmospheric Vent Models 11
- Ultra Low NOx Atmospheric Vent High Input Models 11
- Ultra Low NOx Power Vent (TTW®) Models 11
- Ultra Low NOx Power Direct Vent Models 12
- Ultra Low NOx Direct Vent Models 12
- Infiniti Tankless™ K-Series Indoor and Outdoor Models 13
- Infiniti Tankless™ High and Mid Efficiency Models 13

Residential Electric Models

- AeroTherm® Series Heat Pump Models 14
- Upright and Lowboy Models 15
- Wall Hung and Utility Models 15
- Powerful Compact™ Models 16
- KwickShot® Instantaneous Water Heaters 17

Residential Solar Models

- Residential Solar Models 18

Residential Hydronic/Space Heating Models

- Combi1™ Single-Wall Atmospheric Models 19
- Combi1™ TTW® Single-Wall Power Vent Models 19
- Combi2® Double-Wall Atmospheric Models 19
- Combi2® TTW® Double-Wall Power Vent Models 19

Residential Indirect-Fired Models

- PowerStor Series™ Single-Wall Indirect Models 20
- PowerStor2 Series™ Double-Wall Indirect Models 20
- PowerStor Series® SS Single-Wall Indirect Models 21

Residential Storage Tank Models

- AST Models 21

Terms of Sale

■ GENERAL INFORMATION

1. This price schedule does not constitute an offer to sell. All orders are subject to final approval and acceptance. **Prices, terms and specifications are subject to change without notice.** Billing prices are those in effect on the date of order entry for immediate shipment only.
2. **All shipments are F.O.B. shipping point.** Under such F.O.B. terms, the beneficial and legal title to, ownership of, right to possession of, control over and risk of loss and damage to the goods shall pass to Customer at the F.O.B. shipping point upon Seller's tender of the goods for delivery to Customer or a common carrier. For purposes of this Agreement, delivery of the goods includes tendering the goods to be loaded into the transportation unit of the Customer or common carrier located on Seller's property.
3. **Terms 2% 10th prox. Net 30th prox. origin.**
4. All Residential Storage Models meet or exceed efficiency requirements of the Department of Energy, ASHRAE Standard 90.1b (current standard) and the National Appliance Energy Conservation Act of 1987, amendment effective April 16, 2015 which supersedes all state and local efficiency requirements.
5. All gas water heaters are design certified by CSA International (formerly AGA and CGA) in accordance with ANSI Z21.10.1 or 10.3 latest edition. Closed combustion manufactured home heaters are listed by Underwriters Laboratories.
6. All electric water heaters are listed by Underwriters Laboratories and/or Intertek (ETL).
7. Please specify type of gas, element wattages, phase, and voltages when ordering.

■ PARTS

(Standard stock Shipments)

All parts orders under **\$500.00** net will be shipped prepaid and charged F.O.B. shipping point. Parts orders totaling **\$500.00** or more net will be shipped F.F.A.
"Surface". We reserve the right to ship by the carrier of our choice.

Water heater replacement parts that are defective will be replaced free of charge (exclusive of freight charges) within 1 year of purchase. The return must be accompanied by a receipt providing date of purchase and statement of defect.

■ FREIGHT POLICY

The following terms apply to shipment of orders to one destination. Residential and commercial heaters each have a unit value of one. 150 or more units to one destination qualify for a \$3.00 per unit truckload allowance.

Large Volume Storage Tanks are excluded from this freight policy. These units are shipped prepaid and charged F.O.B. shipping point. No freight allowed.

RESIDENTIAL HEATER FREIGHT TERMS

- 1 to 11 units** - Shipped prepaid and charge F.O.B. shipping point plus **\$15.00** per unit handling charge.
- 12 to 49 units** - Shipped prepaid full freight allowed, plus **\$15.00** per unit handling charge.
- 50 to 149 units** - Shipped prepaid full freight allowed, no handling charge.

150 or more units - Shipped prepaid full freight allowed with **\$3.00** per unit truckload allowance to one destination.

The above terms apply to shipment of orders for residential heaters to one destination.

■ RETURN MATERIAL POLICY

No merchandise may be returned for credit until written authorization has been received from Bradford White Corporation. When so returned (provided the equipment is saleable, unused, no more than six months old based on manufacturing date and in original carton), it must be returned freight prepaid, and will be subject to a minimum 15% re-stocking charge. Custom built Commercial Electric product cannot be returned for credit. All merchandise returned without authorization will be refused and returned to the customer with any incurred expenses being charged back to the customer.

Warranty Information

	Limited Tank Warranty	Limited Parts Warranty		Limited Tank Warranty	Limited Parts Warranty
Residential Gas Models			Residential Electric Models		
Atmospheric Vent High EF Models	6 or 10 Year	6 or 10 Year**	AeroTherm™ Series Heat Pump Models	10 Year	10 Year
Atmospheric Vent Damper Models	6 or 10 Year	6 or 10 Year**	Upright and Lowboy Models	6 or 10 Year	6 or 10 Year**
Atmospheric Vent Models	6 or 10 Year	6 or 10 Year**	Wall Hung and Utility Models	6 or 10 Year	6 or 10 Year**
Atmospheric Vent High Input Models	6 or 10 Year	6 or 10 Year**	Powerful Compact® Models	6 or 10 Year	6 or 10 Year**
Direct Vent Models	6 or 10 Year	6 or 10 Year**	KwickShot® Instantaneous Water Heaters	10 Year†	1 Year
High Efficiency eF Series® Power Vent Model	6 or 10 Year	6 or 10 Year**	Solar Models		
Power Vent (TTW®) Models	6 or 10 Year	6 or 10 Year**	Solar Models	6 or 10 Year	6 Year
Power Direct Vent Models	6 or 10 Year	6 or 10 Year**	Residential Hydronic/Space Heating		
Manufactured Home Models	6 or 10 Year	6 Year	Combi1™ Models	10 Year	6 Year
Ultra Low NOx Atmospheric Vent Damper Models	6 or 10 Year	6 or 10 Year**	Combi2™ Models	10 Year	6 Year
Ultra Low NOx Atmospheric Vent Models	6 or 10 Year	6 or 10 Year**	Residential Indirect Models		
Ultra Low NOx Atmospheric Vent High Input Models	6 or 10 Year	6 or 10 Year**	PowerStor Series® Single-Wall Indirect Models	Limited Lifetime	6 Year
Ultra Low NOx Power Vent (TTW®) Models	6 or 10 Year	6 or 10 Year**	PowerStor2 Series® Double-Wall Indirect Models	Limited Lifetime	6 Year
Ultra Low NOx Power Direct Vent Models	6 or 10 Year	6 or 10 Year**	PowerStor Series® SS Stainless Single-Wall Indirect Models	Limited Lifetime	6 Year
Ultra Low NOx Direct Vent Models	6 or 10 Year	6 or 10 Year**	Residential Storage Tank		
Infiniti Tankless® (K-Series) Models	15 Year*	5 Year	AST Models	6 Year	6 Year
Infiniti Tankless® (HE/ME) Models	12 Year*	5 Year			

Some states do not allow limitations on warranties. See copy of the Warranty included with the heater. *Heat Exchanger Only **10 year parts warranty on warranty upgrade kit models only. †Heater Body Element Assembly.

Warranty Upgrade Kits

Available on selected Residential Water Heaters

Warranty Upgrade Kit Level 1 - 238-43329-00 (6 upgrades per kit) **\$648.00**

Warranty Upgrade Kit Level 2 - 238-44332-00 (6 upgrades per kit) **\$1,026.00**



Residential Warranty Upgrade Kit

The warranty extension will allow a homeowner to increase the original warranty of the water heater from 6 to 10 years on both the tank and parts. The upgrade is available for select residential water heaters. The upgrade requires a registration form be completed and returned to Bradford White. For more information on the new upgrade kits please feel free to contact our Sales Department (800) 523-2931.

Warranty Options

- For 10 Year Limited Tank Warranty change “6” to “10” in Model Number.
- For 1 Year Limited Tank and Parts Warranty change “6” to “1” in Model Number and consult factory for pricing.

*This Warranty Upgrade includes all of the associated suffixes to the base model numbers above. The Upgrade Kit also applies to any corresponding new model numbers created.

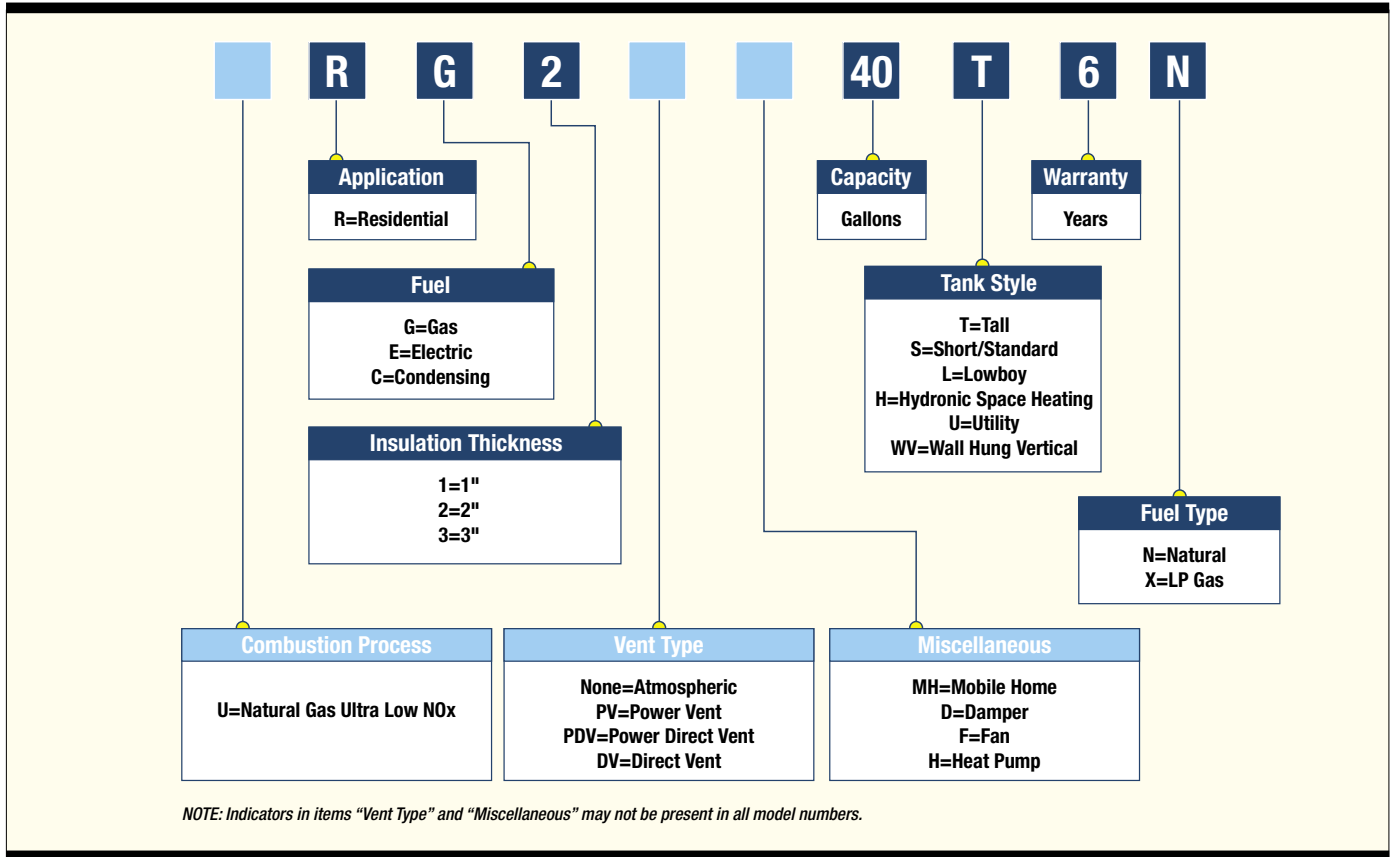
** Available in Canada ONLY.

LEVEL 1			
GAS*	RG230S	URG130T	URG250T
RG150L**	RG240T	URG140T	URG250L
RG130T	RG240S	URG150T	URG250S
RG140T	RG250L	URG230T	
RG150T	RG250T	URG240T	
RG230T	RG250S	URG240S	
ELECTRIC*	RE250L	RE340S	RE112T
RE120L	RE230S**	RE340T	RE115U
RE130L	RE240S	RE350S	RE120U
RE230L	RE250S	RE350T	RE16WV
RE230LN	RE265T**	RE16U	RE112WV
RE240L	RE280T**	RE110U	RE120WV
RE240LN	RE330S	RE112U	
LEVEL 2			
GAS*	RG2DV40S	RG1PV50S	URG2DV40S
RG2F40S	RG2DV50S	RG2PV40T	URG2DV50S
RG2F50S	RG2DV50H	RG2PV50T	URG1PV40S
RG250H	RG2MH30T	RG2PV60T**	URG1PV50S
RG275H	RG2MH40T	RG2PV50H	URG2PV40T
RG2100H	RG2DVMH30T	RG2PV75H	URG2PV50T
RG1D30T	RG2DVMH40T	RC2PV50H	URG2PV50H
RG1D40S	RG2PDV40S	URG250H	URG2PV75H
RG1D40T	RG2PDV50S	URG275H	URG2DV50H
RG1D50T	RG2PDV50H	URG2100H	URG2PDV40S
RG2D40S	RG2PDV75H	URG2D40S	URG2PDV50S
RG2D50S	RG1PV40S	URG2D50S	URG2PDV50H
ELECTRIC*	MS65R	MS80R	MS120R

Pre-NAECA models may also be available for warranty upgrade. Please refer to warranty upgrade kit for more information.

Model Number Naming Structure

Residential Model Number Structure



Residential Gas Models



- 1.) Model numbers shown are for Natural Gas. For LP Gas (Propane) change suffix "N" to "X" and add \$40.00 to Natural Gas net prices where applicable.
- 2.) LP Gas Inputs may vary from their Natural Gas counterparts. Consult current specification sheets for accurate information.
- 3.) Recoveries based on manufacturer's rated recovery efficiency.
- 4.) All gas water heaters are certified at 300 psi test pressure and 150 psi working pressure. All water connections are 3/4" NPT on 8" centers unless specified otherwise. All gas connections are 1/2" unless specified otherwise.
- 5.) All models include a drain valve.
- 6.) All models meet or exceed efficiency requirements of the Department of Energy, ASHRAE 90.1b (current standard), the National Appliance Energy Conservation Act of 1987 recent amendment effective April 16, 2015 which supersedes all state and local efficiency requirements and are CEC listed.
- 7.) All residential gas water heaters are design certified by CSA International (formerly AGA and CGA). Closed Combustion Manufactured Home models are listed by Intertek (ETL).

High Efficiency and Damper

Atmospheric Vent Fan Assist Models 2" Non-CFC Foam Insulation - 120 VAC required



Model Number	Nominal Capacity (Gal.)	DOE Rated Storage Volume (Gal.)	Input BTU/Hr.	GPH Rec. 90°F Rise	First Hour Rating (Gal.)	Style	Floor to Flue Conn.	Jacket Dia.	Vent Size	Approx. Shpg. Wt.	Limited Tank Warranty	
											6 Year	10 Year
★RG2F40S6N	40	38	38,000	41	62	Standard	54 1/4"	22"	3" or 4"	150	\$2,162.00	\$2,333.00
★RG2F50S6N	50	48	38,000	41	76	Standard	55 1/4"	24"	3" or 4"	176	2,339.00	2,510.00

T&P Valve installed. Heat traps installed.
★ = ENERGY STAR® Qualified.



Atmospheric Vent Damper Models 1" Non-CFC Foam Insulation (RG2D = 2" Non-CFC Foam Insulation) - 120 VAC required



Model Number	Nominal Capacity (Gal.)	DOE Rated Storage Volume (Gal.)	Input BTU/Hr.	GPH Rec. 90°F Rise	First Hour Rating (Gal.)	Style	Floor to Flue Conn.	Jacket Dia.	Vent Size	Approx. Shpg. Wt.	Limited Tank Warranty	
											6 Year	10 Year
RG1D30T6N•	30	28	32,000	34	53	Tall	63"	16"	3" or 4"	116	\$1,410.00	\$1,581.00
RG1D40S6N•	40	38	40,000	43	67	Standard	57 7/8"	20"	3" or 4"	147	1,526.00	1,697.00
RG1D40T6N•	40	38	40,000	43	65	Tall	63 3/8"	18"	3" or 4"	134	1,526.00	1,697.00
RG1D50T6N•	50	48	40,000	43	78	Tall	63 3/8"	20"	3" or 4"	160	1,619.00	1,790.00
★RG2D40S6N*	40	38	38,000	41	62	Standard	54 1/2"	22"	3" or 4"	155	1,793.00	1,964.00
★RG2D50S6N*	50	47	40,000	43	81	Standard	63 1/2"	22"	3" or 4"	174	1,935.00	2,106.00

T&P Valve installed. Heat traps installed.
* = Water connections are 11" centers.
• = Models feature optional top T&P location. Must be specified when ordering.
★ = ENERGY STAR® Qualified.



Residential Gas Models

Atmospheric and Atmospheric High Input Models



Atmospheric Vent Models

2" Non-CFC Foam Insulation (RG1 Models have 1" Non-CFC Foam Insulation)



Model Number	Nominal Capacity (Gal.)	DOE Rated Storage Volume (Gal.)	Input BTU/Hr.	GPH Rec. 90°F Rise	First Hour Rating (Gal.)	Style	Floor to Flue Conn.	Jacket Dia.	Vent Size	Approx. Shpg. Wt.	Limited Tank Warranty	
											6 Year	10 Year
RG130T6N•	30	29	27,000	29	46	Tall	59 ³ / ₄ "	16"	3" or 4"	106	\$1,189.00	\$1,297.00
RG140T6N•	40	38	34,000	37	64	Tall	61 ⁵ / ₁₆ "	18"	3" or 4"	132	1,291.00	1,399.00
RG150T6N•	50	47	34,000	37	75	Tall	60 ¹ / ₈ "	20"	3" or 4"	148	1,423.00	1,531.00
RG230T6N•	30	29	32,000	34	60	Tall	59 ³ / ₄ "	18"	3" or 4"	116	1,160.00	1,268.00
RG230S6N	30	29	30,000	32	49	Short	49 ¹ / ₄ "	20"	3" or 4"	113	1,160.00	1,268.00
RG240T6N•	40	38	40,000	43	75	Tall	60 ¹ / ₈ "	20"	3" or 4"	134	1,220.00	1,328.00
RG240S6N•	40	38	40,000	43	69	Short	51 ⁹ / ₁₆ "	22"	3" or 4"	139	1,220.00	1,328.00
RG250L6N	48	47	40,000	43	77	Lowboy	51 ⁹ / ₁₆ "	24"	3" or 4"	170	1,386.00	1,494.00
RG250T6N•	50	48	40,000	43	81	Tall	60 ¹ / ₈ "	22"	3" or 4"	154	1,363.00	1,471.00
RG250S6N•	50	47	50,000	54	75	Standard	60 ¹ / ₈ "	22"	4"	167	1,440.00	1,548.00

T&P Valve Installed. Heat traps installed.

• = Models feature optional top T&P location. Must be specified when ordering.



Atmospheric Vent High Input Models

2" Non-CFC Foam Insulation

Model Number	Nominal Capacity (Gal.)	DOE Rated Storage Volume (Gal.)	Input BTU/Hr.	GPH Rec. 90°F Rise	First Hour Rating (Gal.)	Style	Floor to Flue Conn.	Jacket Dia.	Vent Size	Approx. Shpg. Wt.	Limited Tank Warranty	
											6 Year	10 Year
RG250H6N	48	46	65,000	70	106	Standard	60 ¹ / ₈ "	22"	4"	189	\$1,551.00	\$1,722.00
RG255H6N	55	55	78,000	84	117	Standard	58 ¹ / ₂ "	24"	4"	210	1,903.00	N/A
RG275H6N	75	72	76,000	82	135	Standard	62 ⁵ / ₈ "	26"	4"	240	1,992.00	2,163.00
RG2100H6N	100	95	80,000	85	157	Standard	71 ¹ / ₂ "	28 ¹ / ₄ "	4"	413	3,104.00	3,275.00

T&P Valve installed.

All models feature side connections for space heating.

Circulating Loop Installation Kit:

P/N 265-43103-00 (Dielectric unions, Isolation valves and Extended nipples) . . . \$68.25

Water Connection Centers as Follows:

- RG250H6N = 11"
- RG255H6N = 8"
- RG275H6N = 11"
- RG2100H6N = 16"

Water Connection Sizes as Follows:

- RG250H6N = ¾"
- RG255H6N = ¾"
- RG275H6N = 1"
- RG2100H6N = 1¹/₄"

Hand Hole cleanout standard on 100 gallon model only.

Direct Vent Models

Direct Vent Models

2" Non-CFC Foam Insulation



Model Number	Nominal Capacity (Gal.)	DOE Rated Storage Volume (Gal.)	Input BTU/Hr.	GPH Rec. 90°F Rise	First Hour Rating (Gal.)	Style	Floor to C/L of Vent (min.)	Jacket Dia.	Vent Size I.D. O.D.	Approx. Shpg. Wt.	Limited Tank Warranty	
											6 Year	10 Year
RG2DV40S6N-SLD	40	38	38,000	41	62	Short	63 ¹ / ₂ "	22"	3" 5"	189	\$1,550.00	\$1,721.00
RG2DV40S6N-FLX	40	38	38,000	41	62	Short	63 ¹ / ₂ "	22"	3" 5"	189	1,586.00	1,757.00
RG2DV40S6N-OLY	40	38	38,000	41	62	Short	63 ¹ / ₂ "	22"	3" 5"	189	1,439.00	1,610.00
RG2DV50S6N-SLD	50	47	42,000	45	77	Standard	72 ¹ / ₂ "	22"	3" 5"	212	1,696.00	1,867.00
RG2DV50S6N-FLX	50	47	42,000	45	77	Standard	72 ¹ / ₂ "	22"	3" 5"	212	1,732.00	1,903.00
RG2DV50S6N-OLY	50	47	42,000	45	77	Standard	72 ¹ / ₂ "	22"	3" 5"	212	1,585.00	1,756.00
RG2DV50H6N-SLD	48	46	50,000	54	96	Standard	75 ⁷ / ₈ "	22"	4" 6"	234	1,839.00	2,010.00
RG2DV50H6N-FLX	48	46	50,000	54	96	Standard	75 ⁷ / ₈ "	22"	4" 6"	234	1,875.00	2,046.00
RG2DV50H6N-OLY	48	46	50,000	54	96	Standard	75 ⁷ / ₈ "	22"	4" 6"	234	1,703.00	1,874.00

T&P Valve Installed. Heat traps installed.

A Telescoping Solid Vent Kit (-SLD), or Flexible Vent Kit (-FLX) is shipped with the water heater.

Ex: RG2DV40S6N-SLD. This model ships with a Telescoping Solid Vent Kit.

Ex: RG2DV40S6N-FLX. This model ships with a Flexible Vent Kit.

When a Vent Kit is not needed or is required to be shipped separately add (-OLY) to the model number.

EX: RG2DV40S6N-OLY. This model ships without a Vent Kit.

RG2DV40S6N and RG2DV50S6N

Solid Vent Kit shipped separately. P/N 239-51283-00 **\$111.00**

Flexible Vent Kit shipped separately. P/N 239-51284-00 **\$147.00**

Refer to Installation and Operating Manual for Vent Kit Components. Horizontal vent termination only.

Optional Telescoping Solid Vent Kits:

■ Kit "A" Telescopes from 4³/₈" to 5¹/₈" P/N 239-41260-00 **\$44.10**

■ Kit "B" Telescopes from 6¹/₂" to 9³/₈" P/N 239-41331-00 **\$51.45**

■ Kit "C" Telescopes from 13³/₄" to 23¹/₁₆" P/N 239-41029-00 **\$63.00**

■ Kit "D" Telescopes from 49¹/₈" to 95¹/₈" P/N 239-41424-00 **\$105.00**

Refer to Installation and Operating Manual for Vent Kit Components. Horizontal vent termination only.

RG2DV50H6N

Solid Vent Kit shipped separately. P/N 239-51286-00 **\$136.00**

Flexible Vent Kit shipped separately. P/N 239-51287-00 **\$172.00**

Circulating Loop Installation Kit:

P/N 265-43103-00 (Dielectric unions, Isolation valves and Extended nipples) **\$68.25**

Optional Telescoping Solid Vent Kits:

■ Kit "F" Telescopes from 4³/₈" to 5¹/₈" P/N 239-42516-00 **\$47.25**

■ Kit "G" Telescopes from 6¹/₂" to 9³/₈" P/N 239-42517-00 **\$59.85**

■ Kit "H" Telescopes from 13³/₄" to 23¹/₁₆" P/N 239-42514-00 **\$73.50**

■ Kit "I" Telescopes from 49¹/₈" to 95¹/₈" P/N 239-42512-00 **\$129.15**

Residential Gas Models

Power Vented Models



High Efficiency eF Series™ Power Vent Model

2" Non-CFC Foam Insulation - 120 VAC required



Model Number	Nominal Capacity (Gal.)	DOE Rated Storage Volume (Gal.)	Input BTU/Hr.	GPH Rec. 90°F Rise	First Hour Rating (Gal.)	Style	Floor to Vent Conn.	Jacket Dia.	Vent Size	Approx. Shpg. Wt.	Limited Tank Warranty	
											6 Year	10 Year
★ RC2PV50H6N	50	49	76,000	93	120	Standard	67 ⁷ / ₁₆ "	24"	2", 3", or 4"	225	\$3,802.00	\$3,973.00

T&P Valve Installed. Heat traps installed.

★ = ENERGY STAR® Qualified. 



Power Vent TTW® Models

2" Non-CFC Foam Insulation - 120 VAC required. (RG1 Models Have 1" Non-CFC Foam Insulation)



Model Number	Nominal Capacity (Gal.)	DOE Rated Storage Volume (Gal.)	Input BTU/Hr.	GPH Rec. 90°F Rise	First Hour Rating (Gal.)	Style	Floor to Vent Conn.	Jacket Dia.	Vent Size	Approx. Shpg. Wt.	Limited Tank Warranty	
											6 Year	10 Year
RG1PV40S6N	40	38	40,000	43	62	Short	57 ¹ / ₂ "	20"	2" or 3"	140	\$1,823.00	\$1,994.00
RG1PV50S6N	50	48	40,000	43	77	Short	58 ⁷ / ₁₆ "	22"	2" or 3"	166	2,039.00	2,210.00
★ RG2PV40S6N	40	38	40,000	43	70	Short	57 ¹ / ₂ "	22"	2" or 3"	142	1,917.00	2,088.00
★ RG2PV50S6N	50	48	40,000	43	75	Short	58 ¹ / ₂ "	24"	2" or 3"	168	2,171.00	2,342.00
★ RG2PV40T6N	40	38	40,000	43	75	Tall	67 ¹ / ₁₆ "	20"	2" or 3"	146	1,990.00	2,161.00
★ RG2PV50T6N	50	48	40,000	43	71	Tall	67 ⁷ / ₁₆ "	22"	2" or 3"	173	2,142.00	2,313.00
★ RG2PV50H6N	48	46	65,000	70	116	Standard	66 ¹ / ₂ "	22"	3" or 4"	187	2,284.00	2,455.00
RG1PV55H6N	55	55	78,000	84	125	Standard	64 ⁹ / ₁₆ "	22"	3" or 4"	219	2,480.00	N/A
RG2PV75H6N	75	72	76,000	82	121	Standard	69 ¹ / ₂ "	26"	3" or 4"	260	2,727.00	2,898.00

T&P Valve Installed. Heat traps installed.

★ = ENERGY STAR® Qualified. 

Power Direct Vent Models



Power Direct Vent Models

2" Non-CFC Foam Insulation - 120 VAC required.



Model Number	Nominal Capacity (Gal.)	DOE Rated Storage Volume (Gal.)	Input BTU/Hr.	GPH Rec. 90°F Rise	First Hour Rating (Gal.)	Style	Floor to Exhaust Conn.	Jacket Dia.	Vent Size	Approx. Shpg. Wt.	Limited Tank Warranty	
											6 Year	10 Year
★ RG2PDV40S6N	40	38	40,000	43	73	Short	59 ⁷ / ₁₆ "	22"	2" or 3"	161	\$1,801.00	\$1,972.00
★ RG2PDV50S6N	50	48	40,000	43	80	Short	60 ⁷ / ₁₆ "	24"	2" or 3"	192	1,938.00	2,109.00
★ RG2PDV50H6N	48	46	60,000	65	103	Tall	69 ¹ / ₁₆ "	22"	3" or 4"	204	2,268.00	2,439.00
RG2PDV75H6N	75	72	80,000	86	134	Tall	69 ¹ / ₂ "	26"	3" or 4"	291	3,212.00	3,383.00

T&P Valve Installed. Heat traps installed.

★ = ENERGY STAR® Qualified. 

Circulating Loop Installation Kit:

P/N 265-43103-00 (Dielectric unions, Isolation valves and Extended nipples) . . . **\$68.25**

Optional Vent Kits:

■ 2" Concentric Vent Kit Termination P/N 239-44069-02 **\$57.75**

■ 3" Concentric Vent Kit Termination P/N 239-44069-01 **\$67.20**

■ Air Intake Relief Device P/N 239-48392-00 **\$70.35**

RG2PDV50H6N & RG2PDV75H6N have ¾" NPT water connections on 11" centers.

Residential Gas Models

Manufactured Home Models

All manufactured home models are design evaluated in accordance with H.U.D. Manufactured Home Construction and Safety Standard, Title 24 CFR, part 3280.707 (d)(2) for energy efficiency.

Manufactured Home Closed Combustion/Direct Vent Energy Saver Models 2" Non-CFC Foam Insulation



Model Number	Nominal Capacity (Gal.)	DOE Rated Storage Volume (Gal.)	Input BTU/Hr.	GPH Rec. 90°F Rise	First Hour Rating (Gal.)	Style	Floor to Flue Conn.	Jacket Dia.	Vent Size	Approx. Shpg. Wt.	Limited Tank Warranty	
											6 Year	10 Year
RG2DVMH30T6X	30	29	30,000	32	56	Tall	57 ⁹ / ₁₆ "	18"	3"	119	\$1,310.00	\$1,481.00
RG2DVMH40T6X	40	38	30,000	32	51	Tall	57 ¹ / ₄ "	20"	3"	139	1,406.00	1,577.00

T&P Valve Installed. Heat trap installed on hot water outlet.

For new installation these units must be ordered with vent kit package, which includes roof jack, air intake tube, and instructions.

The water heater includes a convertible control and a steel burner for Natural or LP gas.

Water connections are 3/4" NPT. The cold water inlet is on the side and the hot water outlet is on the top.

Roof Jack Kits:

12" Clearance	P/N 239-37022-01	\$157.50
18"/32" Clearance	P/N 239-37022-02	\$164.85
32"/60" Clearance	P/N 239-37022-03	\$190.05
48"/95" Clearance	P/N 239-37022-04	\$219.45

(Includes: roof jack, hardware, air intake, instructions).

Manufactured Home Atmospheric Combustion Energy Saver Models 2" Non-CFC Foam Insulation



Model Number	Nominal Capacity (Gal.)	DOE Rated Storage Volume (Gal.)	Input BTU/Hr.	GPH Rec. 90°F Rise	First Hour Rating (Gal.)	Style	Floor to Flue Conn.	Jacket Dia.	Vent Size	Approx. Shpg. Wt.	Limited Tank Warranty	
											6 Year	10 Year
RG2MH30T6X	30	29	32,000	34	50	Tall	59 ¹⁵ / ₁₆ "	18"	3" or 4"	118	\$1,251.00	\$1,422.00
RG2MH40T6X	40	37	34,000	37	54	Tall	60 ³ / ₈ "	20"	3" or 4"	135	1,308.00	1,479.00

T&P Valve Installed. Heat trap installed on hot water outlet.

For new installation these units must be ordered with vent kit package, which includes roof jack and instructions.

The water heater includes a convertible control and a steel burner for Natural or LP gas.

Water connections are 3/4" NPT. The cold water inlet is on the side and the hot water outlet is on the top.

Not approved for installation where a sealed combustion system is required.

Roof Jack Kits:

12" Clearance	P/N 239-37030-01	\$133.35
18"/32" Clearance	P/N 239-37030-02	\$140.70
32"/60" Clearance	P/N 239-37030-03	\$171.15
48"/95" Clearance	P/N 239-37030-04	\$194.25

(Includes: roof jack, hardware, instructions)

Ultra Low NOx Models

Ultra Low NOx Atmospheric Vent Damper Models 2" Non-CFC Foam Insulation - 120 VAC Required



Model Number	Nominal Capacity (Gal.)	DOE Rated Storage Volume (Gal.)	Input BTU/Hr.	GPH Rec. 90°F Rise	First Hour Rating (Gal.)	Style	Floor to Flue Conn.	Jacket Dia.	Vent Size	Approx. Shpg. Wt.	Limited Tank Warranty	
											6 Year	10 Year
★ URG2D40S6N	40	38	38,000	40	67	Standard	57 ⁵ / ₁₆ "	22"	3" or 4"	159	\$2,145.00	\$2,316.00
★ URG2D50S6N	50	47	40,000	42	81	Standard	65 ⁷ / ₈ "	22"	3" or 4"	172	1,960.00	2,131.00

T&P Valve Installed. Heat traps installed on hot water outlet.

• = Models feature optional top T&P location. Must be specified when ordering.

★ = ENERGY STAR® Qualified.



Residential Gas Models

Ultra Low NOx Atmospheric Vent Models

2" Non-CFC Foam Insulation (URG1 Models have 1" Non-CFC Foam Insulation)



Model Number	Nominal Capacity (Gal.)	DOE Rated Storage Volume (Gal.)	Input BTU/Hr.	GPH Rec. 90°F Rise	First Hour Rating (Gal.)	Style	Floor to Flue Conn.	Jacket Dia.	Vent Size	Approx. Shpg. Wt.	Limited Tank Warranty	
											6 Year	10 Year
URG130T6N	30	29	27,000	29	46	Tall	59 ¹⁵ / ₁₆ "	16"	3" or 4"	112	\$1,455.00	\$1,563.00
URG140T6N	40	38	34,000	37	64	Tall	61 ¹ / ₂ "	18"	3" or 4"	130	1,556.00	1,664.00
URG150T6N	50	47	34,000	37	75	Tall	60 ⁵ / ₁₆ "	20"	3" or 4"	153	1,686.00	1,794.00
URG230T6N	30	29	32,000	34	60	Tall	56 ¹⁵ / ₁₆ "	18"	3" or 4"	119	1,426.00	1,534.00
URG240T6N	40	38	40,000	43	75	Tall	60 ⁵ / ₁₆ "	20"	3" or 4"	137	1,487.00	1,595.00
URG240S6N	40	38	40,000	43	69	Short	51 ³ / ₄ "	22"	3" or 4"	149	1,487.00	1,595.00
URG250T6N	50	48	40,000	43	81	Tall	60 ⁵ / ₁₆ "	22"	3" or 4"	160	1,625.00	1,733.00
URG250L6N▲	48	47	40,000	43	77	Lowboy	51 ¹³ / ₁₆ "	24"	3" or 4"	174	1,652.00	1,760.00
URG250S6N	50	47	50,000	54	75	Standard	60 ⁵ / ₈ "	22"	4"	169	1,705.00	1,813.00

T&P Valve Included. Heat traps installed.

▲ = Model features side T&P location ONLY. All other models available with top T&P location ONLY.

Ultra Low NOx Atmospheric Vent High Input Models

2" Non-CFC Foam Insulation



Model Number	Nominal Capacity (Gal.)	DOE Rated Storage Volume (Gal.)	Input BTU/Hr.	GPH Rec. 90°F Rise	First Hour Rating (Gal.)	Style	Floor to Flue Conn.	Jacket Dia.	Vent Size	Approx. Shpg. Wt.	Limited Tank Warranty	
											6 Year	10 Year
URG250H6N	48	46	55,000	59	110	Tall	60 ⁵ / ₈ "	22"	4"	194	\$1,788.00	\$1,959.00
URG275H6N	75	72	76,000	82	135	Tall	64 ¹ / ₄ "	26"	4"	286	2,425.00	2,596.00
URG2100H6N	100	95	80,000	85	157	Tall	69 ³ / ₈ "	28 ¹ / ₄ "	4"	416	3,680.00	3,851.00

T&P Valve Installed. Heat traps installed (except URG275H & URG2100H).

The 75 gallon model has 1" NPT water connections on 11" centers.

The 100 gallon model has 1¹/₄" NPT water connections on 16" centers.

Side connections for space heating standard.

Hand Hole cleanout standard on 100 gallon model.

Ultra Low NOx Power Vent TTW® Models

2" Non-CFC Foam Insulation - 120 VAC required (URG1 Models have 1" Non-CFC Foam Insulation)



Model Number	Nominal Capacity (Gal.)	DOE Rated Storage Volume (Gal.)	Input BTU/Hr.	GPH Rec. 90°F Rise	First Hour Rating (Gal.)	Style	Floor to Vent Conn.	Jacket Dia.	Vent Size I.D. O.D.	Approx. Shpg. Wt.	Limited Tank Warranty	
											6 Year	10 Year
URG1PV40S6N	40	38	40,000	43	62	Short	57 ¹ / ₂ "	20"	2" 3"	144	\$2,078.00	\$2,249.00
URG1PV50S6N	50	48	40,000	43	77	Short	58 ¹ / ₂ "	22"	2" 3"	169	2,321.00	2,492.00
★ URG2PV40T6N	40	38	40,000	43	75	Tall	67 ¹ / ₁₆ "	20"	2" 3"	151	2,265.00	2,436.00
★ URG2PV50T6N	50	48	40,000	43	71	Tall	67 ¹ / ₁₆ "	22"	2" 3"	176	2,425.00	2,596.00
★ URG2PV50H6N	48	46	56,000	60	107	Tall	66 ¹ / ₂ "	22"	3" 4"	192	2,594.00	2,765.00
URG2PV75H6N	75	72	76,000	82	121	Tall	69 ⁷ / ₁₆ "	26"	3" 4"	270	3,620.00	3,791.00

T&P Valve Installed. Heat traps installed.

★ = ENERGY STAR® Qualified.



Residential Gas Models



Ultra Low NOx Power Direct Vent Models

2" Non-CFC Foam Insulation - 120 VAC required.



Model Number	Nominal Capacity (Gal.)	DOE Rated Storage Volume (Gal.)	Input BTU/Hr.	GPH Rec. 90°F Rise	First Hour Rating (Gal.)	Style	Floor to Exhaust Outlet	Jacket Dia.	Vent Size	Approx. Shpg. Wt.	Limited Tank Warranty	
											6 Year	10 Year
★ URG2PDV40S6N	40	38	40,000	43	73	Short	59 ⁷ / ₈ "	22"	2" or 3"	170	\$2,098.00	\$2,269.00
★ URG2PDV50S6N	50	48	40,000	43	80	Short	60 ⁷ / ₈ "	24"	2" or 3"	196	2,231.00	2,402.00
★ URG2PDV50H6N	48	46	50,000	64	82	Tall	69 ¹ / ₁₆ "	22"	3" or 4"	208	2,668.00	2,839.00

T&P Valve Installed. Heat traps installed.

★ = ENERGY STAR® Qualified.



Circulating Loop Installation Kit:

P/N 265-43103-00 (Dielectric unions, Isolation valves and Extended nipples) **\$68.25**

Optional Vent Kits:

■ 2" Concentric Vent Kit Termination P/N 239-44069-02. **\$57.75**

■ 3" Concentric Vent Kit Termination P/N 239-44069-01. **\$67.20**

■ Air Intake Relief Device P/N 239-48392-00 **\$70.35**

URG2PDV50H6N has 3/4" NPT water connections on 11" centers.

Residential Gas Models



Ultra Low NOx Direct Vent Models

2" Non-CFC Foam Insulation



Model Number	Nominal Capacity (Gal.)	DOE Rated Storage Volume (Gal.)	Input BTU/Hr.	GPH Rec. 90°F Rise	First Hour Rating (Gal.)	Style	Floor to C/L of Vent (min.)	Jacket Dia.	Vent Size I.D. O.D.	Approx. Shpg. Wt.	Limited Tank Warranty	
											6 Year	10 Year
URG2DV40S6N-SLD	40	38	38,000	41	62	Short	63 ¹ / ₂ "	22"	3" 5"	198	\$1,880.00	\$2,051.00
URG2DV40S6N-FLX	40	38	38,000	41	62	Short	63 ¹ / ₂ "	22"	3" 5"	198	1,916.00	2,087.00
URG2DV40S6N-OLY	40	38	38,000	41	62	Short	63 ¹ / ₂ "	22"	3" 5"	198	1,769.00	1,940.00
URG2DV50S6N-SLD	50	47	38,000	41	78	Short	72 ¹ / ₂ "	22"	3" 5"	221	2,061.00	2,232.00
URG2DV50S6N-FLX	50	47	38,000	41	78	Short	72 ¹ / ₂ "	22"	3" 5"	221	2,097.00	2,268.00
URG2DV50S6N-OLY	50	47	38,000	41	78	Short	72 ¹ / ₂ "	22"	3" 5"	221	1,950.00	2,121.00
URG2DV50H6N-SLD	48	46	45,000	46	83	Standard	74 ¹ / ₄ "	22"	4" 6"	240	2,214.00	2,385.00
URG2DV50H6N-FLX	48	46	45,000	46	83	Standard	74 ¹ / ₄ "	22"	4" 6"	240	2,250.00	2,421.00
URG2DV50H6N-OLY	48	46	45,000	46	83	Standard	74 ¹ / ₄ "	22"	4" 6"	240	2,078.00	2,249.00

T&P Valve Installed. Heat traps installed.

When a Vent Kit is not needed or is required to be shipped separately add (-OLY) to the model number.

EX: URG2DV40S6N-OLY. This model ships without a Vent Kit.

URG2DV40S6N and URG2DV50S6N

Solid Vent Kit shipped separately. P/N 239-51283-00 **\$111.00**

Flexible Vent Kit shipped separately. P/N 239-51284-00 **\$147.00**

Refer to Installation and Operating Manual for Vent Kit Components. Horizontal vent termination only.

Optional Telescoping Solid Vent Kits:

■ Kit "A" Telescopes from 4³/₈" to 5¹/₁₆" P/N 239-41260-00 **\$44.10**

■ Kit "B" Telescopes from 6¹/₂" to 9³/₁₆" P/N 239-41331-00 **\$51.45**

■ Kit "C" Telescopes from 13³/₈" to 23¹/₁₆" P/N 239-41029-00 **\$63.00**

■ Kit "D" Telescopes from 49¹/₁₆" to 95¹/₁₆" P/N 239-41424-00 **\$105.00**

Refer to Installation and Operating Manual for Vent Kit Components. Horizontal vent termination only.

URG2DV50H6N

Solid Vent Kit shipped separately. P/N 239-51286-00 **\$136.00**

Flexible Vent Kit shipped separately. P/N 239-51287-00 **\$172.00**

Circulating Loop Installation Kit:

P/N 265-43103-00 (Dielectric unions, Isolation valves and Extended nipples) **\$68.25**

Optional Telescoping Solid Vent Kits:

■ Kit "F" Telescopes from 4³/₈" to 5¹/₁₆" P/N 239-42516-00 **\$47.25**

■ Kit "G" Telescopes from 6¹/₂" to 9³/₁₆" P/N 239-42517-00 **\$59.85**

■ Kit "H" Telescopes from 13³/₈" to 23¹/₁₆" P/N 239-42514-00 **\$73.50**

■ Kit "I" Telescopes from 49¹/₁₆" to 95¹/₁₆" P/N 239-42512-00 **\$129.15**

Residential Gas Models



Tankless Models



Infiniti Tankless™ K-Series - Indoor Models

Model Number	Installation	BTU/Hr. Input	GPM Flow Rate °F Temperature Rise			Height	Width	Depth	Approx. Shpg. Wt.	Limited Warranty
			45°F	75°F	90°F					
★RTG-K-160-N1	Indoor	9,000-160,000	7.0	4.2	3.5	31 1/2"	18 19/32"	9 27/32"	79	\$1,118.00
★RTG-K-199-N1	Indoor	9,000-199,000	8.7	5.2	4.4	31 1/2"	18 19/32"	9 27/32"	79	1,290.00

★ = ENERGY STAR® Qualified.



Infiniti Tankless™ K-Series - Outdoor Models

Model Number	Installation	BTU/Hr. Input	GPM Flow Rate °F Temperature Rise			Height	Width	Depth	Approx. Shpg. Wt.	Limited Warranty
			45°F	75°F	90°F					
★RTG-K-160-N2	Outdoor	9,000-160,000	7.0	4.2	3.5	31 1/2"	18 19/32"	9 27/32"	79	\$1,118.00
★RTG-K-199-N2	Outdoor	9,000-199,000	8.7	5.2	4.4	31 1/2"	18 19/32"	9 27/32"	79	1,290.00

★ = ENERGY STAR® Qualified.

Optional Accessories:

- External Aquastat Connection Kit (For recirculation) P/N 7736505665 \$15.00
- External NTC Sensor Kit (For recirculation) P/N 7736505666 \$36.00
- Connecting Cable Kit (Outdoor Models) P/N 7736505664 \$43.00



Infiniti Tankless™ High Efficiency Models

Model Number	Installation	BTU/Hr. Input	GPM Flow Rate °F Temperature Rise			Height	Width	Depth	Approx. Shpg. Wt.	Limited Warranty
			45°F	75°F	90°F					
★RTG-199HE-N	Indoor/Outdoor*	19,900-199,000	8.3	5.0	4.2	30 9/16"	17 13/16"	10 7/16"	74	\$1,235.00
★RTG-199HE-X	Indoor/Outdoor*	19,900-199,000	8.3	5.0	4.2	30 9/16"	17 13/16"	10 7/16"	74	1,235.00

* Requires optional outdoor installation kit.

★ = ENERGY STAR® Qualified.



Infiniti Tankless™ Mid Efficiency Models

Model Number	Installation	BTU/Hr. Input	GPM Flow Rate °F Temperature Rise			Height	Width	Depth	Approx. Shpg. Wt.	Limited Warranty
			45°F	75°F	90°F					
RTG-199ME-N	Indoor/Outdoor*	19,900-199,000	7.3	4.4	3.7	30 9/16"	17 13/16"	10 7/16"	67	\$1,029.00
RTG-199ME-X	Indoor/Outdoor*	19,900-199,000	7.3	4.4	3.7	30 9/16"	17 13/16"	10 7/16"	67	1,029.00

* Requires optional outdoor installation kit.
Meets or exceeds some utility rebate programs.

12-Year Heat Exchanger Warranty
5-Year Component Parts Warranty

Optional Venting Components - RTG-199HE Models Only:

- Concentric "Up & Out" Vent Kit P/N 7738004890 \$144.90
- Common Vent Kit - Side to Side P/N 7738004886 \$525.00
- Common Vent Kit - Side to Side Extension P/N 7738004887 \$215.25
- Common Vent Kit - Back to Back P/N 7738004888 \$474.60
- Common Vent Kit - Back to Back Extension P/N 7738004889 \$370.65
- 3" Concentric Vent Termination P/N 239-44069-01 \$67.20

Optional Accessories

- Outdoor Kit P/N 7736502748 \$135.45
- Intelligent Cascading Kit (Up to 24 Units) P/N 7736502750 \$32.55
- High Temperature Kit (Up to 184°F Setpoint) P/N 7736502749 \$23.10
- Recess Box P/N 239-51097-00 \$181.65
- Pipe Cover P/N 239-51098-00 \$181.65
- Installation Kit - NPT Thread* P/N MIVK-T-LW \$145.95
- Installation Kit - Sweat Connection* P/N 239-45284-00 \$73.50

* Recommended with purchase of Infiniti Tankless Water Heaters; includes pressure relief valve and two isolation valves

These Products Are Net And Not Subject To Performance Incentive Program.

Residential Electric Models

General

All models UL and/or ETL listed. All water connections are 3/4" NPT. All electrical connections 3/4". All models are certified at 300 psi test pressure and 150 psi working pressure.

Note: The **Upright** and **Lowboy** heaters will be wired interlocking (non-simultaneous) 240 volt with (2) 4500 watt elements (dual rated to 208 volt/3500 watt), unless otherwise specified. Other wattages are available up to (2) 6000 watts non-simultaneous (Reference chart to the right for simultaneous limitations). 4500 watt/240 volt elements require a 30 AMP circuit breaker. Maximum wattage at 120 volt is 3000 watts.

Note: The **Utility** and **Wall Hung** Heaters will be wired for 120 volt with (1) 1500 watt element. 1500 watt/120 volt element requires a 20 Amp breaker. Other wattages are available. Maximum wattage for 6 and 12 gallon tall utility models is 3000W. Maximum wattage for 10, 12 and 15 gallon utility models is 6000W. Maximum wattage 6 gallon wall hung is 3000W. Maximum wattage for 12, 20 and 30 gallon wall hung models is 6000W.

Maximum Wattage Limitations at Various Voltages for Simultaneous Operation

3000 Watts	1500W/1500W at 120V
10000 Watts	5000W/5000W at 208V
11000 Watts	5500W/5500W at 240V
12000 Watts	6000W/6000W at 277V, 480V



High Efficiency and Upright Models



AeroTherm® Series Heat Pump Models 2" Non-CFC Foam Insulation

Model Number	Nominal Capacity (Gal.)	DOE Rated Storage Volume (Gal.)	GPH Rec. 90°F Rise	First Hour Rating (Gal.)	Style	Floor to Top of Heater	Floor to Water Conn.	Jacket Dia.	Approx. Shpg. Wt.	Limited Tank Warranty	
										6 Year	10 Year
★ RE2H50S	50	45	21	65	Upright	59 ³ / ₁₆ "	60 ³ / ₄ "	21 ³ / ₄ "	195	\$1,479.00	\$1,579.00
★ RE2H80T	80	75	21	87	Upright	70 ¹³ / ₁₆ "	73 ¹ / ₂ "	25"	235	1,919.00	\$2,019.00

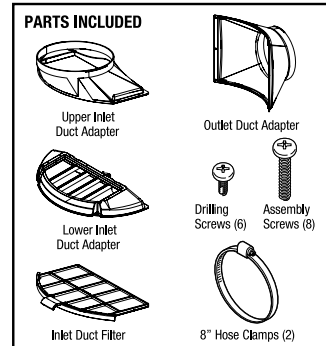
T&P Valve Installed.

Models only available as 4500W/4000W operation.

★ = ENERGY STAR® Qualified.



■ Optional Ducting Kit P/N: 415-52820-00 \$240.45



These Products Are Net And Not Subject To Performance Incentive Program.

Residential Electric Models

Residential Upright and Lowboy Models

Energy Saver Series - Non-CFC Foam Insulation

Upright Models



Model Number	Nominal Capacity (Gal.)	DOE Rated Storage Volume (Gal.)	GPH Rec. 90°F Rise	First Hour Rating (Gal.)	Floor to Top of Heater	Floor to Water Conn.	Jacket Dia.	Approx. Shpg. Wt.	Limited Tank Warranty	
									6 Year	10 Year
RE330S6	30	27	21	43	46 ¹¹ / ₁₆ "	48 ¹⁵ / ₁₆ "	20"	100	\$959.00	\$1,067.00
RE240S6**	40	36	21	48	47 ³ / ₁₆ "	49 ⁷ / ₁₆ "	20"	123	1,135.00	1,243.00
RE340S6	40	36	21	49	47 ³ / ₁₆ "	49 ⁷ / ₁₆ "	22"	114	1,015.00	1,123.00
RE340T6	40	36	21	53	60 ³ / ₁₆ "	62 ⁷ / ₁₆ "	20"	125	1,015.00	1,263.00
RE350S6	50	45	21	60	47 ³ / ₁₆ "	49 ⁷ / ₁₆ "	24"	144	1,155.00	1,263.00
RE250S6**	50	45	21	60	47 ³ / ₁₆ "	49 ⁷ / ₁₆ "	22"	143	1,349.00	1,457.00
RE250T6	50	45	21	64	59"	60 ¹ / ₄ "	20"	130	1,155.00	1,263.00

T&P Valve Installed. Heat traps installed on all models.

* Dimension does not include additional insulation blanket.

** Models include supplied insulation blanket.

Lowboy Models



Model Number	Nominal Capacity (Gal.)	DOE Rated Storage Volume (Gal.)	GPH Rec. 90°F Rise	First Hour Rating (Gal.)	Floor to Top of Heater	Floor to Water Conn.	Jacket Dia.	Approx. Shpg. Wt.	Limited Tank Warranty	
									6 Year	10 Year
RE120L6	19	—	21	—	24 ⁷ / ₁₆ "	25 ¹¹ / ₁₆ "	18"	65	\$1,131.00	\$1,239.00
RE130L6**	28	26	21	42	29 ⁹ / ₁₆ "	31 ⁵ / ₁₆ "	20"	99	1,179.00	1,287.00
RE230LN6	28	26	21	41	29 ⁹ / ₁₆ "	31 ⁵ / ₁₆ "	23"	102	1,152.00	1,260.00
RE230L6**	28	26	21	42	29 ⁹ / ₁₆ "	31 ¹³ / ₁₆ "	22"	108	1,173.00	1,281.00
RE240LN6	37	34	21	45	32 ¹ / ₁₆ "	34 ⁵ / ₁₆ "	24 ¹ / ₂ "	126	1,237.00	1,345.00
RE240L6**	38	35	21	49	32 ³ / ₈ "	34 ⁵ / ₈ "	24"	140	1,260.00	1,368.00
RE250LN6	45	43	21	61	33 ⁵ / ₁₆ "	36 ¹ / ₁₆ "	26"	173	1,441.00	1,549.00

T&P Valve Installed. Heat traps installed on all models.

* Dimension does not include additional insulation blanket.

** Models include supplied insulation blanket.

Residential Utility and Wall Hung Models

Wall Hung Models - Bottom Water Connections



Model Number	Nominal Capacity (Gal.)	GPH Rec. 90°F Rise	Height of Heater	Height to T&P Conn.	Jacket Dia.	Approx. Shpg. Wt.	Limited Tank Warranty	
							6 Year	10 Year
RE16WV6†	6	7	16 ¹ / ₁₆ "	11 ¹⁵ / ₁₆ "	14"	37	\$740.00	\$848.00
RE112WV6	12	7	16 ⁷ / ₁₆ "	12 ⁷ / ₈ "	18"	54	761.00	869.00
RE120WV6	19	7	24 ⁷ / ₁₆ "	20 ¹⁵ / ₁₆ "	18"	67	942.00	1,050.00

† Maximum wattage at any voltage is 3000W

Utility Models - Side Water Connections



Model Number	Nominal Capacity (Gal.)	GPH Rec. 90°F Rise	Floor to Top of Heater	Floor to T&P Conn.	Jacket Dia.	Approx. Shpg. Wt.	Limited Tank Warranty	
							6 Year	10 Year
RE16U6*†	6	7	16 ³ / ₁₆ "	9 ³ / ₄ "	14"	35	\$615.00	\$723.00
RE110U6	10	7	17 ⁷ / ₁₆ "	13 ¹⁵ / ₁₆ "	16"	44	646.00	754.00
RE112U6*	12	7	16 ¹⁵ / ₁₆ "	9 ³ / ₄ "	18"	53	661.00	769.00
RE112T6*†	12	7	27 ⁵ / ₁₆ "	20 ⁵ / ₈ "	14"	48	661.00	769.00
RE115U6	15	7	20 ³ / ₁₆ "	17 ¹¹ / ₁₆ "	18"	58	693.00	801.00
RE120U6	19	7	24 ⁷ / ₁₆ "	18 ³ / ₁₆ "	18"	65	743.00	851.00

T&P Valve Included.

* The 6 and 12 gallon Utility Models have water connections standard on the side and plugged connections on the top.

† Maximum wattage at any voltage is 3000W

Residential Electric Models



Powerful Compact™ Model

Model Number	Nominal Capacity (Gal.)	GPH Rec. 90°F Rise	Floor to Top of Heater	Floor to Water Conn.	Jacket Dia.	Approx. Shpg. Wt.	Limited Tank Warranty	
							6 Year	10 Year
RE1-2U6	2	7	12"	12 ³ / ₄ "	9 ¹⁵ / ₁₆ "	13	\$542.00	\$650.00

Includes a 4ft. cord with 3 prong grounded plug (20 amp circuit required).
 For 10 year models, change suffix "6" to "10".
 Single element only.
 Based on 1500W operation.
 Only available as 120V / 1500W.

Residential Electric Model Number Suffix

Note: When ordering water heaters specify voltage, wattage, phase, and operation. The following tables are for informational purposes only.

Phase	1	Single Phase	Operation	N	Non-Simultaneous	Designator	A	C	E	H	J	L*
	3	Three Phase		S	Simultaneous		Voltage	120	208/240	277	480	600

EX: RE350S6-1NCWW

EX: RE350S6-1NCWW

EX: RE350S6-1NCWW

*Use "L" voltage designator if wiring 208V with 5000, 5500 or 6000 watt; also 2500W or 3000W on RE16U, RE112T, RE16WW models.

For 120V, 277V, 480V, and 600V operation

Designator	J	K	L*	M	N	P	R	S	T	W	X	Y	Z
Wattage	1000	1250	1500	2000	2500	3000	3500	3800	4000	4500	5000	5500	6000

EX: RE350S6-1NCWW

* Use "L" voltage designator if wiring 208V with 2500W or 3000W on RE16U, RE112T, & RE16WW models.

All 120V and 277V models are shipped standard single phase. Three phase not available.

For 240V and 208V operation (Dual rated elements show a value for both 240V and 208V)

Designator	J	K	L	M	N	P	R	S	T	W	X	Y	Z	X**	Y**	Z**
240V Wattage	1000	1250	1500	2000	2500	3000	3500	3800	4000	4500	5000	5500	6000	—	—	—
208V Wattage	—	—	1000	1500	2000	—	2500	—	3000	3500	—	4000	4500	5000	5500†	6000†

EX: RE350S6-1NCWW, will give 240V with 4500W/4500W. This same heater can also be energized at 208V with reduced wattage of 3500W/3500W.

** Use "L" voltage designator if wiring 208V with 5000, 5500 or 6000 watt.

† Available in non-simultaneous only.

Residential Electric Product Options

	Dash#	Add	Each Add	Deduct
■ Simultaneous Single Phase Operation		\$8.00		
■ Three Phase Wiring (Unbalanced)		\$8.00		
– If ordering both simultaneous and three phase (unbalanced) only		\$8.00		
■ INCOLOY® Elements - (Does not apply to 277V/480V)	(-284)	\$8.00		
■ Low Watt Density Elements - Upper and Lower	(-116)	\$8.00		
■ Low Watt Density Elements - Lower Only	(-315)	\$4.00		
■ 277V Element (INCOLOY® element standard)		\$14.00		
■ 480V Element (INCOLOY® element standard)		\$14.00		
■ For Single Element Heaters, EX: RE350S6-1NCW				(\$6.00)

Maximum Wattage Limitations at Various Voltages for Simultaneous Operation

3000 Watts	1500W/1500W at 120V
10000 Watts	5000W/5000W at 208V
11000 Watts	5500W/5500W at 240V
12000 Watts	6000W/6000W at 277V, 480V

Residential Electric Models

KWICKSHOT® Electric Instantaneous Models - Single Phase



Additional voltages and wattages are available. For more information, please consult the Product Management Department.

Single Point Models



Model Number	kW Rating	Voltage	AMPS	Temp. Rise °F 0.5 gpm	Rec. Wire Size	Price		
						1-3 Units	4-17 Units	18+ Units
ES-3000-1-S-10	3.0	120	25.0	41	10 AWG	\$183.00	\$169.00	\$147.00
ES-3500-1-S-10	3.5	120	29.0	48	10 AWG	183.00	169.00	147.00
ES-3500-4-S-10*	3.5	240	14.6	48	14 AWG	183.00	169.00	147.00
ES-4100-2-S-10	4.1	208	19.7	56	12 AWG	186.00	172.00	151.00
ES-4100-5-S-10	4.1	277	14.8	56	14 AWG	186.00	172.00	151.00
ES-5500-4-S-10*	5.5	240	22.9	75	10 AWG	186.00	172.00	151.00

* This model is dual rated for 208V. (Approximately 25% reduced output.) No Change to model number required.

Thermostatic Models



Model Number	kW Rating	Voltage	AMPS	Temperature Rise °F					Rec. Wire Size	Price		
				0.5 gpm	0.75 gpm	1.0 gpm	1.5 gpm	2.0 gpm		1-3 Units	4-17 Units	18+ Units
EFT-7500-4-S-10*	7.5	240	32.0	—	68	51	34	25	8 AWG	\$237.00	\$219.00	\$200.00
EFT-9500-4-S-10*	9.5	240	40.0	—	86	65	43	32	8 AWG	237.00	219.00	200.00

* This model is dual rated for 208V. (Approximately 25% reduced output.) No Change to model number required.

Flow Controlled Models



Model Number	kW Rating	Voltage	AMPS	Temperature Rise °F					Rec. Wire Size	Price		
				0.5 gpm	0.75 gpm	1.0 gpm	1.5 gpm	2.0 gpm		1-3 Units	4-17 Units	18+ Units
EFC-5500-4-S-10*	5.5	240	23.0	75	50	38	25	18	10 AWG	\$183.00	\$169.00	\$147.00
EFC-6500-4-S-10*	6.5	240	27.0	88	59	44	30	22	10 AWG	183.00	169.00	147.00
EFC-7500-4-S-10*	7.5	240	32.0	—	68	51	34	25	8 AWG	183.00	169.00	147.00
EFC-8300-2-S-10	8.3	208	39.0	—	76	57	38	29	8 AWG	186.00	172.00	151.00
EFC-9500-4-S-10*	9.5	240	40.0	—	86	65	43	32	8 AWG	186.00	172.00	151.00

* This model is dual rated for 208V. (Approximately 25% reduced output.) No Change to model number required.

Series Two Heating Module With Thermostatic Control Model



Model Number	kW Rating	Voltage	AMPS	Temperature Rise °F				Rec. Wire Size (per mod)	Price		
				1.5 gpm	2.0 gpm	2.5 gpm	3.0 gpm		1-3 Units	4-17 Units	18+ Units
EFT-19000-4-D-10*	19.0	240	2 x 40	87	65	52	43	8 AWG	\$568.00	\$524.00	\$425.00

* This model is dual rated for 208V. (Approximately 25% reduced output.) No Change to model number required.

Series Three Thermostatic Models (Single Phase)



Model Number	kW Rating	Voltage	AMPS	Temperature Rise °F					Recommended Wire Size	Price
				1.5 gpm	2.0 gpm	2.5 gpm	3.0 gpm	4.0 gpm		
EFT-28000-4-T-10*	28.0	240	3 x 40	—	—	—	65	90	8 AWG per mod	\$1,141.00

* This model is dual rated for 208V. (Approximately 25% reduced output.) No Change to model number required.

KWICKSHOT® Electric Instantaneous Models - Three Phase

Additional voltages and wattages are available. For more information, please contact the Product Management Department.

Thermostatic Triple Module Models



Model Number	kW Rating	Voltage	AMPS	Temperature Rise °F						Recommended Wire Size	Price
				1.5 gpm	2.0 gpm	2.5 gpm	3.0 gpm	3.5 gpm	4.0 gpm		
EFTR-18000-6-T-10	18.0	480Y*	21.7	82	61	49	41	35	32	10 AWG	\$1,417.00
EFTR-24000-6-T-10	24.0	480Y*	28.9	—	82	65	54	47	41	10 AWG	1,417.00
EFTR-32000-6-T-10	32.0	480Y*	38.5	—	—	87	73	62	55	8 AWG	1,417.00

* Neutral leg required.

These Products Are Net And Not Subject To Performance Incentive Program.

Solar Models



SOLAR Models



Solar Saver® Electric Backup Models

2" Non-CFC Foam Insulation

Model Number	Gal. Cap.	GPH Rec. 90°F Rise	Alternate Collector Conn.	Style	Floor to Top of Heater	Jacket Dia.	Floor to Water Conn.	Approx. Shpg. Wt.	Limited Tank Warranty	
									6 Year	10 Year
MS65R6SS	65	21	No	Standard	59"	22"	60"	168	\$1,309.00	\$1,480.00
MS80R6SS	80	21	Yes	Standard	59"	24"	60"	210	1,472.00	1,643.00
MS120R6SS	119	21	Yes	Standard	62½"	28"	63½"	310	1,934.00	2,105.00

T&P Valve Installed.

Includes one 4500 Watt Backup Element and one Surface Mount Thermostat.

Residential Hydronic/Space Heating Models



Direct Fired Water Heating/Space Heating Models

Combi1™ Single-Wall Atmospheric Energy Saver Models



2" Non-CFC Foam Insulation



Model Number	Gal. Cap.	Input BTU/Hr.	GPH Rec. 90°F Rise	Floor to Flue Conn.	Jacket Dia.	Vent Size	Approx. Shpg. Wt.	Limited Tank Warranty 10 Year
C-SW2-504T10FBN	45	65,000	70	59 1/4"	22"	4"	236	\$2,706.00
C-SW2-75T10BN	72	76,000	81	62 1/4"	26"	4"	292	3,410.00

T&P Valve Installed. Includes Mixing Device.
For LP Gas, change "BN" to "SX" and add..... \$40.00
These water heaters have two anode rods.

Combi1™ TTW® Single-Wall Power Vent Energy Saver Models



2" Non-CFC Foam Insulation-120 VAC required



Model Number	Gal. Cap.	Input BTU/Hr.	GPH Rec. 90°F Rise	Floor to Vent Conn.	Jacket Dia.	Vent Size	Approx. Shpg. Wt.	Limited Tank Warranty 10 Year
C-SW2-TW50T10FBN	45	67,000	72	65 1/4"	22"	3" or 4"	243	\$3,383.00
C-SW2-TW75T10BN	72	76,000	82	68 1/4"	26"	3" or 4"	313	3,700.00

T&P Valve Installed. Includes Mixing Device.
For LP Gas, change "BN" to "SX" and add..... \$40.00
These water heaters have two anode rods.

Water Connection Extenders:
P/N 239-48429-00 . . . \$31.50

Combi2® Double-Wall Atmospheric Energy Saver Models



2" Non-CFC Foam Insulation



Model Number	Gal. Cap.	Input BTU/Hr.	GPH Rec. 90°F Rise	Floor to Flue Conn.	Jacket Dia.	Vent Size	Approx. Shpg. Wt.	Limited Tank Warranty 10 Year
C-DW2-504T10FBN	45	65,000	70	59 1/4"	22"	4"	238	\$2,863.00
C-DW2-75T10BN	72	76,000	81	62 1/4"	26"	4"	302	3,575.00

T&P Valve Installed. Includes Mixing Device.
For LP Gas, change "BN" to "SX" and add..... \$40.00
These water heaters have two anode rods.

Combi2® TTW® Double-Wall Power Vent Energy Saver Models



2" Non-CFC Foam Insulation-120 VAC required



Model Number	Gal. Cap.	Input BTU/Hr.	GPH Rec. 90°F Rise	Floor to Vent Conn.	Jacket Dia.	Vent Size	Approx. Shpg. Wt.	Limited Tank Warranty 10 Year
C-DW2-TW50T10FBN	45	67,000	72	65 1/4"	22"	3" or 4"	245	\$3,483.00
C-DW2-TW75T10BN	72	76,000	82	68 1/4"	26"	3" or 4"	315	3,808.00

T&P Valve Installed. Includes Mixing Device.
For LP Gas, change "BN" to "SX" and add..... \$40.00
These water heaters have two anode rods.

Water Connection Extenders:
P/N 239-48429-00 . . . \$31.50

Residential Hydronic/
Space Heating Models

Residential Indirect-Fired Models



Indirect-Fired Models

PowerStor Series™ Single-Wall Indirect Models

2" Non-CFC Foam Insulation



Model Number	Gal. Cap.	First Hour Rating @ 135°F (Gal.)	AHRI Rating Continuous Draw @ 135°F Gal./Hr.	Floor to Top of Heater	Floor to Water Conn.	Jacket Dia.	Head Loss @ 8GPM	Approx. Shpg. Wt.	Limited Tank Warranty
									Lifetime
SW-2-30-L	29	255	235	33 ⁵ / ₈ "	34 ³ / ₈ "	22"	0.22 ft.	164	\$1,649.00
SW-2-40R-L	37	260	235	41 ¹ / ₈ "	41 ⁷ / ₈ "	22"	0.22 ft.	185	1,770.00
SW-2-50R-L	43	265	235	46 ¹ / ₄ "	47"	22"	0.22 ft.	195	2,050.00
SW-2-65-L	57	275	235	59 ¹ / ₄ "	60"	22"	0.22 ft.	225	2,354.00
SW-2-80-L	71	295	235	59"	59 ³ / ₄ "	24"	0.22 ft.	250	2,658.00
SW-2-120-L	110	325	235	62 ¹ / ₂ "	63 ¹ / ₄ "	28 ¹ / ₄ "	0.22 ft.	370	3,418.00

Immersed Aquastat. The "L" in the model number indicates Limited Lifetime Warranty.

Note: These certified ratings were obtained with a heat source output of 157,000 BTU/Hr., a flow rate of 13.7 GPM, and a 180°F boiler water supply temperature. Boiler Connections are 1" NPT.

PowerStor2 Series™ Double-Wall Indirect Models

2" Non-CFC Foam Insulation



Model Number	Gal. Cap.	First Hour Rating @ 135°F (Gal.)	AHRI Rating Continuous Draw @ 135°F Gal./Hr.	Floor to Top of Heater	Floor to Water Conn.	Jacket Dia.	Head Loss @ 8GPM	Approx. Shpg. Wt.	Limited Tank Warranty
									Lifetime
DW-2-40-L	37	123	98	41"	41 ⁷ / ₈ "	22"	2.4 ft.	195	\$1,932.00
DW-2-50-L	43	133	98	46 ¹ / ₄ "	47 ¹ / ₄ "	22"	2.4 ft.	205	2,254.00
DW-2-65-L	57	148	98	59"	60"	22"	2.4 ft.	235	2,616.00
DW-2-80-L	71	158	98	59"	59 ³ / ₄ "	24"	2.4 ft.	255	2,978.00

Surface Mount Thermostat. The "L" in the model number indicates Limited Lifetime Warranty.

Note: These certified ratings were obtained with a heat source output of 65,000 BTU/Hr., a flow rate of 8.0 GPM, and a 180°F boiler water supply temperature. Boiler Connections are 3/4" NPT.

Residential Indirect-Fired Models, Storage Tank



PowerStor Series® SS Single-Wall Indirect Models 2" Non-CFC Foam Insulation

Model Number	Nominal Capacity (Gal.)	First Hour Rating @ 135°F (Gal.)	AHRI Rating Continuous Draw @ 135°F Gal./Hr.	Floor to Top of Heater	Floor to Hot Water Conn.	Floor to Cold Water Conn.	Jacket Dia.	Standby Heat Loss Rating (°F/Hr.)	Approx. Shpg. Wt.	Limited Tank Warranty
										Lifetime
SS-30-L	29	179	160	31 ⁵ / ₈ "	32 ¹ / ₂ "	32 ¹ / ₂ "	24"	0.8	75	\$1,900.00
SS-40-L	38	237	209	38 ¹ / ₄ "	38 ⁷ / ₈ "	38 ⁷ / ₈ "	24"	0.6	91	2,014.00
SS-50-L	50	269	229	48"	48 ⁷ / ₈ "	48 ⁷ / ₈ "	24"	0.5	103	2,292.00
SS-75-L	73	367	307	65 ⁵ / ₈ "	66 ¹ / ₄ "	66 ¹ / ₄ "	24"	0.4	142	2,972.00
SS-120-L	111	409	319	63 ³ / ₈ "	53 ¹ / ₂ "	2 ¹¹ / ₁₆ "	30 ¹ / ₄ "	0.3	217	4,027.00

Units ship with Immersed Aquastat.

The "L" in the model number indicates Limited Lifetime Tank Warranty in residential applications.

PowerStor Series SS™ Models can also be used commercially and would carry a five year tank warranty.

These AHRI certified ratings were obtained with a heat output rate as specified and a 180°F boiler water supply temperature.

Boiler supply and return connections are 1" NPT on all models.

Potable Water connections are 3/4" NPT and 1" NPT on the SS-120-L models.

These Products Are Net And Not Subject To Performance Incentive Program.

Storage Tank Models



Storage Tank Models 2" Non-CFC Foam Insulation

Model Number	Gal. Cap.	Floor to Top of Heater	Jacket Dia.	Floor to Water Conn.	Floor to Drain/Boiler Return	Water and Boiler Supply Conn.	Boiler Return Conn.	Weight	Limited Tank Warranty
									6 Year
AST-40-6	40	46 ⁷ / ₈ "	20"	47 ⁷ / ₈ "	3 ³ / ₈ "	3/4"	3/4"	103	\$858.00
AST-50-6	50	46 ⁵ / ₈ "	22"	47 ⁵ / ₈ "	3 ³ / ₈ "	3/4"	3/4"	130	1,027.00
AST-80-6	80	58 ³ / ₈ "	24"	59 ³ / ₈ "	3 ³ / ₈ "	3/4"	3/4"	183	1,279.00
AST-120-6	119	62 ⁷ / ₈ "	28 ¹ / ₄ "	63 ³ / ₈ "	3 ³ / ₈ "	1"	3/4"	305	1,982.00

Surface Mount Thermostat.



Built to be the Best™



Bradford White **FIND A PRO** Contractor Directory

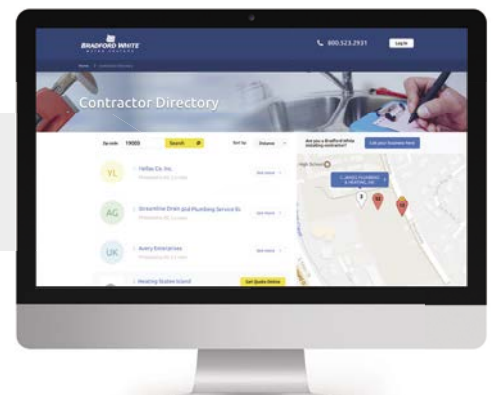
HELP HOMEOWNERS FIND YOUR PRO CUSTOMERS!

Our contractor directory has been updated and improved to add valuable new features - and we want your professional customers to be on it! Encourage your contractor customers to put their business listing on the **Bradford White FIND A PRO** directory today and they'll:

- **Get Great New Features**
Expanded profiles, customer reviews, ability to upload project photos, list certifications, industry associations and more.
- **Attract More Customers**
New expanded profile will help contractors stand out more and promote their business.
- **Grow Their and *Your* Business**
Local customers will be connected directly with contractors, delivering new sales opportunities for them and you.
- **Close New Leads FAST**
Contractors get notified instantly about new customer leads so they can lock-up jobs quickly.

Takes just 5 minutes to register - it's fast, easy and FREE!

Visit bwfindapro.com





Built to be the Best™

WE'RE HERE FOR THE PRO.

And We Mean It.

At Bradford White, our business is being there for your business. Our job is to help you serve the needs of contractors, installers and specifying engineers.

And that's not just talk - we stand behind you every day.

When you sell Bradford White, you can always count on getting:

Built to be the Best™ water heaters, boilers and tanks that deliver top quality, high performance and unmatched reliability.

Marketing Materials to help you communicate with your professional customers and prospects more effectively than ever before.

Unparalleled Tech Sales Support, so you have all the resources you need to make sure the needs of your customers are met.

Our Exclusive For The Pro® Website - full of tools to help you build your business and ensure your success.



Visit bwforthepro.com to learn more!





— BRADFORD WHITE IS —
**AMERICAN
STRONG**