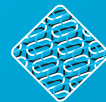


Oral-B PROFESSIONAL CARE
TRIUMPH
 SMART TECHNOLOGY...BRILLIANT RESULTS

WITH **SMART GUIDE** WIRELESS



Smart
TECHNOLOGY

powered by **BRAUN**





English	4
Español	13
Français	22



Internet:

www.oralb.com
www.braun.com



Braun GmbH
Frankfurter Straße 145
61476 Kronberg/Germany

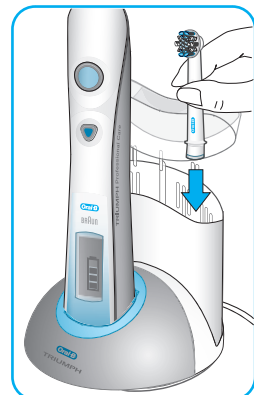
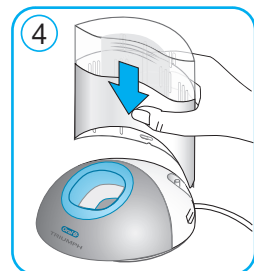
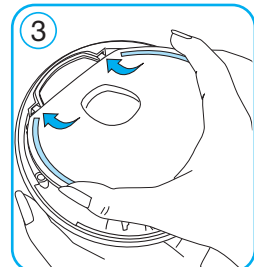
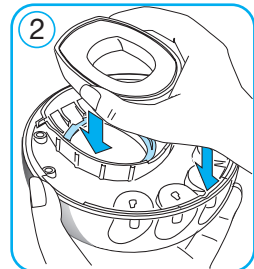
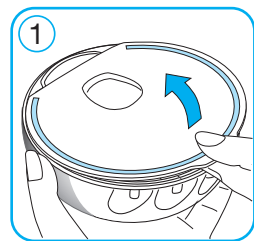
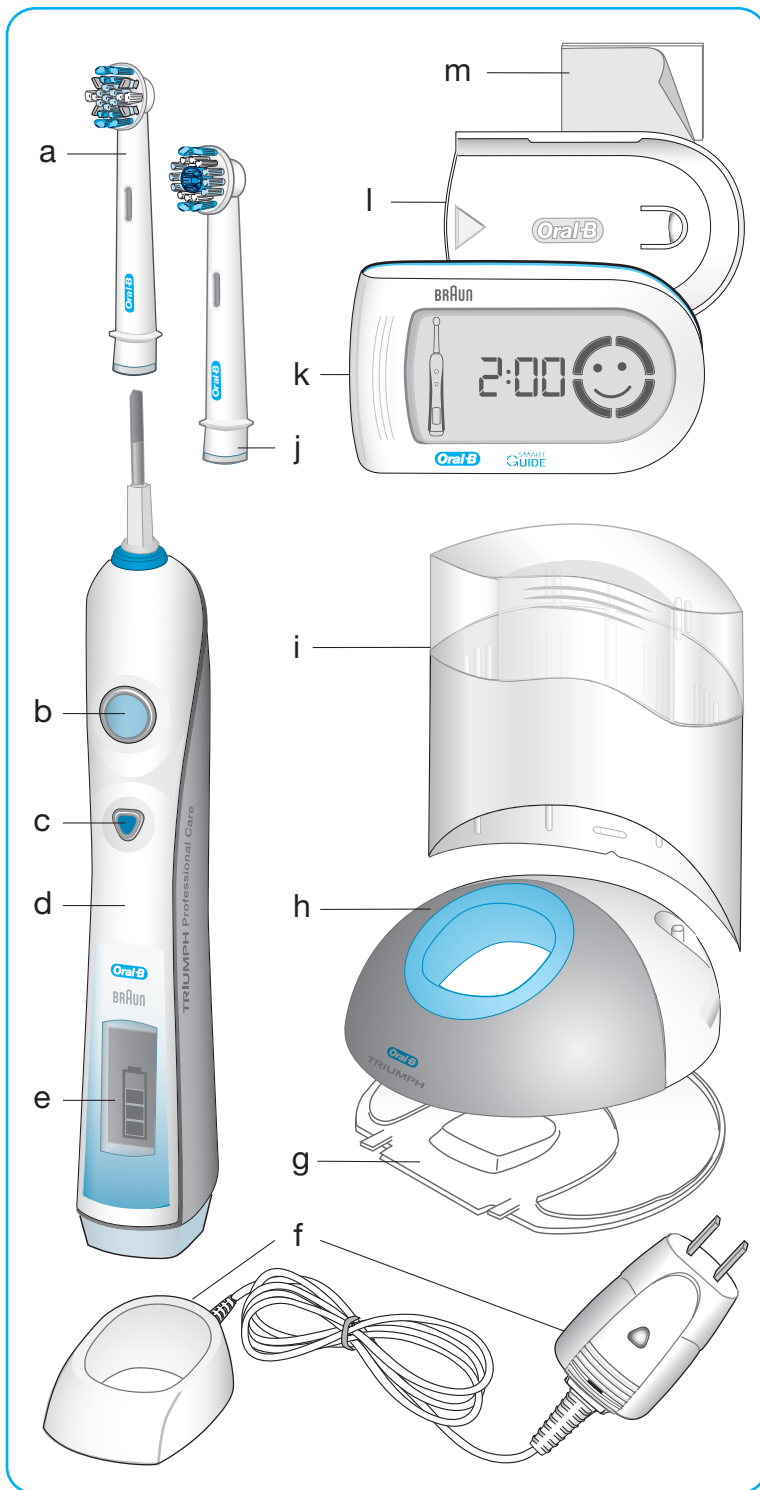
D 30.546.4 X
D 30.546.4
D 30.526.4 X
D 30.516.4

Type 3731
Modelo 3731
Modèle 3731

3738_FCC_1
GB/E/F
Printed in Germany
Impreso en Alemania
Imprimé en Allemagne

register **oralb.com** inscrivez-vous
online/en ligne
valuable offers / offres avantageuses







IMPORTANT SAFEGUARDS

Oral-B Triumph with SmartGuide has been carefully designed to offer you and your family a new and unique brushing experience that is both safe and effective. However, when using electrical products, basic safety precautions should always be followed.

Read all instructions before using.

DANGER

In order to reduce the risk of electrocution:

1. Do not place or store the charger where it can fall or be pulled into a tub or sink.
2. Do not place the charger in water or other liquid.
3. Do not reach for a charger that has fallen into water. Unplug immediately.

WARNING

To reduce the risk of burns, electrocution, fire or injury:

1. Close supervision is necessary when this product is used by or near children or invalids.
2. Use this product only for its intended use as described in this manual. Do not use attachments not recommended by the manufacturer.
3. Keep cord away from heated surfaces.
4. Never drop the appliance or insert any object into any opening of the appliance.
5. Never operate this product if it has been dropped or damaged, if it is not working properly, or if the SmartPlug is damaged or has been dropped into water. If any of these occur, please contact a service center and return the product for examination and repair.
6. This appliance is provided with a SmartPlug with integrated Safety Extra Low Voltage power supply. Do not exchange or manipulate any part of it.

SAVE THESE INSTRUCTIONS





English

You have chosen the smartest toothbrush in the world – with **Oral-B SmartGuide**.

Oral-B Triumph with SmartGuide is the first toothbrush with a wireless display, designed to go beyond ordinary clean to improve your oral health. With its many state-of-the-art features powered by Braun technology and inspired by the dental experts at Oral-B, you can feel confident that you are brushing at your best.

New **Oral-B Triumph** now **with SmartGuide** uses an interactive wireless display to help you optimize your brushing experience. Its innovative brushing technology delivers ultimate plaque removal and its advanced Oral-B FlossAction brushhead features MicroPulse bristles to gently penetrate between teeth. It provides such a thorough clean that you won't believe how great you feel about your teeth.

Oral-B Triumph with SmartGuide is brought to you by Oral-B, the brand more dentists use themselves worldwide.

Important

- To avoid electromagnetic interference and/or compatibility conflicts, deactivate the radio transmission of your toothbrush before carrying or using it in restricted surroundings such as aircrafts or specially marked areas in hospitals (see «Deactivating the radio transmission»).
- Persons with pacemakers should always keep the toothbrush more than six inches (15 centimeters) from the pacemaker when turned on. If at any time you suspect interference is taking place, deactivate the radio transmission of your toothbrush before using it (see «Deactivating the radio transmission»).

Description

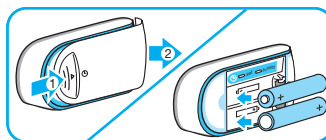
- a Oral-B FlossAction brushhead
- b On/off button
- c Mode button
- d Handle
- e Handle display
- f SmartPlug charger (includes charging ring and SmartPlug)
- g Base plate
- h Base station
- i Protective cover
- j Oral-B ProWhite brushhead (not with all models)

- k SmartGuide display unit
- l Wall mount
- m Adhesive tape

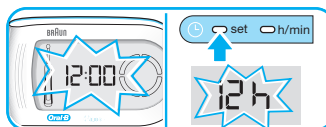
First use

Before brushing for the first time, charge your toothbrush. Plug the SmartPlug into an electrical outlet and place the handle (d) on the charging ring (see «Connecting and charging»).

- To activate the SmartGuide display unit (k), remove the battery compartment cover on the back and insert the two batteries (type AA) with correct polarity (see symbol in the battery compartment).



- A flashing «12:00» on the SmartGuide display indicates that time can be adjusted. Press the «set» button, located in the battery compartment, until «12h» is displayed.



- By briefly pressing the «h/min» button, you can toggle between a «12h» or «24h» daytime format. Push the «set» button to confirm your choice.

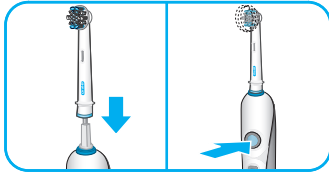


- Then the hour digit starts flashing. Press the «h/min» button until the right hour appears and confirm with the «set» button. Proceed the same way to set both minute digits. If you prefer not using this clock feature, the flashing «12:00» will disappear automatically after 24h.

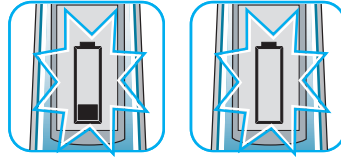




You can start your toothbrush by pressing the on/off button (b). To avoid splashing, guide the brushhead to your teeth before switching the appliance on.



charge before you can use it for a 2-minute brushing.

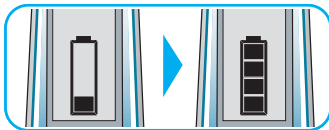


Connecting and charging

Your toothbrush has a waterproof handle, is electrically safe and is designed for use in the bathroom.

To assemble the base station (h) as a charging unit, detach the base plate (g) first (①, page 3). Place the charging ring into the base station and attach the base plate as shown (② and ③, page 3). Then insert the protective cover (i) on the back of your base station (see diagram ④, page 3).

- Plug the SmartPlug into an electrical outlet and place the toothbrush handle (d) on the charging unit. A battery symbol should appear in the handle display (e). The battery symbol will fill up while the handle is being charged. Once the handle is fully charged, the battery symbol is completely filled with four bars. A full charge takes at least 12 hours to complete and allows for approximately two weeks of regular brushing (twice a day, 2 minutes).



Please note: If the battery symbol is not displayed immediately, continue charging. It will appear in 10–15 minutes.

- When the rechargeable battery is low, the battery symbol with one remaining bar starts flashing. Your toothbrush will slow down and then stop. When the battery is fully discharged, the empty frame of the battery symbol flashes. It will then need a 15-minute

- For everyday use, the toothbrush handle can be stored on the charging unit to maintain it at full power. There is no risk of overcharging the battery.

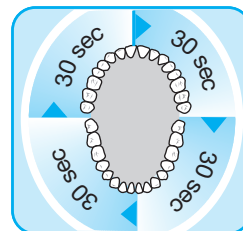
- To maintain the maximum capacity of the rechargeable battery, unplug the charging unit and fully discharge the handle by regular use at least every 6 months.

For electric specifications, see printing on the SmartPlug.

Personalizing the timer

You can choose between the «Professional» or «2-Minute» timer and a «Count Up» or «Count Down» timer to meet your specific needs.

The «2-Minute Timer» indicates by a long stuttering sound and a «smiley» on the SmartGuide display unit that the dentist recommended 2-minute brushing time has been reached. In addition, the «Professional Timer» helps you brush all four quadrants of your mouth equally. It signals with a short stuttering sound at 30-second intervals and the «quadrant circle» on the SmartGuide display unit that it is time to move to the next quadrant of your mouth.



Both timers memorize the elapsed brushing time, even when the handle is briefly switched off during brushing. Only when pausing longer than 30 sec. the timer resets to the initial starting point.

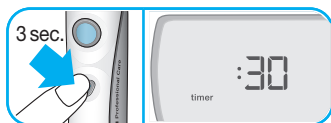




The «Count Up Timer» displays your actual brushing time. The «Count Down Timer» indicates the remaining brushing time. Starting with «2:00» minutes, it goes down to «0:00». When brushing longer than two minutes, it automatically changes to the «Count Up Timer».

Your toothbrush comes with the «Professional Timer» and the «Count Up Timer» activated. If you wish to change these settings, proceed as follows:

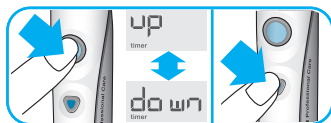
- Press and hold the mode button (c) until the SmartGuide display unit (k) shows «:30» and «timer».



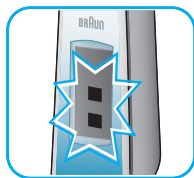
- By briefly pressing the on/off button (b), switch to the «2-Minute Timer». Confirm your choice by pushing the mode button (c).



- This will lead you directly to the «Count Up Timer» display («up» and «timer» will be shown). Switch to the «Count Down Timer» by pressing the on/off button and confirm it with the mode button.



Please note: it is normal that the handle display shows two flashing bars when operating in the timer setting mode.



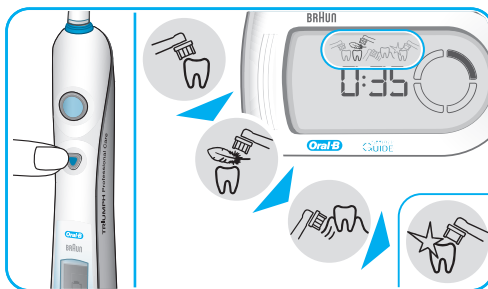
Brushing

Brushing modes

Your toothbrush offers different brushing modes for varying oral care needs:

- «Clean» – Exceptional mouth cleaning.
- «Sensitive» – Gentle, yet thorough cleaning for sensitive areas.
- «Massage» – Gentle stimulation of gums.
- «Polish» (deluxe model only) – Exceptional polishing and natural whitening for occasional or everyday use.

- When pressing the on/off button your toothbrush automatically starts in the «clean» mode.
- To switch to the other modes, successively press the mode button.



- To return from any mode to the «clean» mode, press and hold the mode button.
- To turn your brush off, press the on/off button.

Please note: the «polish» mode (deluxe model only) is best used with an Oral-B ProWhite brushhead. Once the Oral-B ProWhite is attached, press the on/off button and your toothbrush automatically starts in the «polish» mode (please see «Brushheads»).

Brushing technique

- Guide the brushhead slowly from tooth to tooth.
- Hold the brushhead in place for a few seconds before moving on to the next tooth.
- Brush the gums as well as the teeth, first the outsides, then the insides, finally the chewing surfaces.
- Do not press too hard or scrub, simply let the brush do all the work.

When you finish brushing, the total brushing time will be displayed for 30 seconds before the display switches back to the time mode. To directly get to the time mode, clear the brushing time display by pushing the mode button.

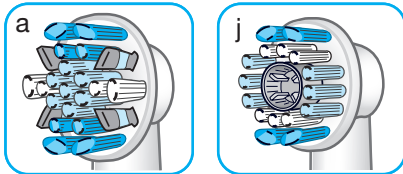




In the first few days of using any electric toothbrush, your gums may bleed slightly. This is usually a sign of pre-existing gum inflammation. Using your Oral-B Triumph toothbrush properly should reduce inflammation and as a result bleeding should stop after a few days. Should it persist after 2 weeks, please consult your dentist or hygienist. If you have sensitive teeth and gums, Oral-B recommends using the «sensitive» mode.

Brushheads

The Oral-B FlossAction brushhead (a) is recommended for everyday deep cleaning. For occasional or everyday polishing, use the Oral-B ProWhite (j) brushhead (not with all models). Please note: children under 12 should not use the Oral-B ProWhite brushhead.



Both brushheads contain a «smart chip» to communicate with the electronics inside the toothbrush handle. Therefore, your toothbrush automatically switches to the appropriate brushing mode for the attached brushhead. Nevertheless, you can select other brushing modes to customize your routine.

Do not use these brushheads with braces. We recommend using the Oral-B Ortho brushhead, which is specifically designed to clean around braces and wires.

SmartGuide display unit

Icons



«Clean» mode



«Sensitive» mode



«Massage» mode



«Polish» mode (not with all models)



Too much pressure is applied. Reduce the brushing force.



«Quadrant circle» – currently you are brushing in the first 30-second interval. Move to the next quadrant of your mouth, when the second segment starts flashing.



Dentist recommended 2-minute brushing time has been reached.



«Pre-notice» – that your brushhead needs to be replaced soon. You can use it for another 10 days (twice a day, 2 minutes) before the recommended replacement time has been reached.



Your brushhead has surpassed the dentist recommended usage time of 3 months (twice a day, 2 minutes). Replace it with a new one.



The rechargeable battery of the handle is low. Charge the toothbrush handle.

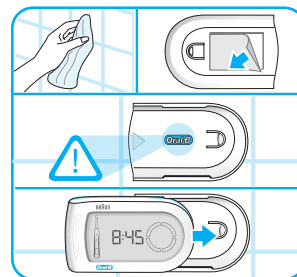


Batteries of the SmartGuide display unit are low. Change batteries of the display unit.

* the «brushhead replacement» and «pre-notice brushhead replacement» features only work when using brushheads enabled with Smart Technology (e.g. Oral-B FlossAction and Oral-B ProWhite)

Wall mount

If you prefer to mount the SmartGuide display unit on a wall, mirror or other surface, use the adhesive tape (m) to fix the wall mount. Before doing so, make sure the chosen surface is clean and dry (remove grease and dust first). Position the wall mount so that the Oral-B logo is readable. Then press the wall mount evenly and firmly to the wall. Wait 24h before sliding the SmartGuide display unit into the fixed wall mount.

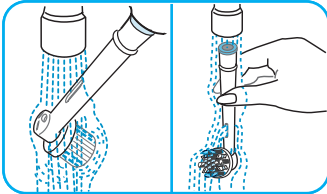




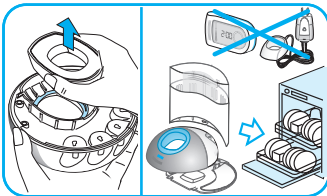
Please note: the adhesive tape will not work on dirt-repellent surfaces.

Cleaning recommendations

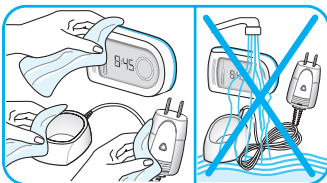
- After brushing, rinse your brushhead thoroughly under running water.
- Remove the brushhead from the handle and clean both parts separately under running water. Then wipe them dry before you put the handle on the charging unit.



- Before cleaning your charging unit, make sure you disassemble it first. The charging ring and the SmartPlug should never be placed in the dishwasher. However, all other parts (base station, base plate and protective cover) are dishwasher-safe.



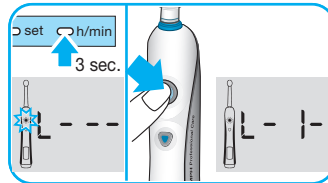
- From time to time, you can also clean the charging ring, the SmartPlug and the SmartGuide display unit with a damp cloth. The SmartPlug charger and the SmartGuide display unit should never be placed in water.



Synchronizing

In order to avoid interference of display messages when using more than one Oral-B Triumph toothbrush with separate SmartGuide display units in the same household, you need to assign the handles to their respective display units. Please follow the steps below:

- Push the «h/min» button in the battery compartment for at least 3 seconds. The SmartGuide display unit shows «L---», indicating the «Learn» mode for synchronization is activated.
- Now you are requested by a flashing on/off button in the toothbrush icon on the SmartGuide display unit to turn the handle on. When doing so, the automatic synchronization process starts. It is finished when «L-1-» is displayed.



- Then turn off the handle.

If you would like to assign a second handle to the same SmartGuide display unit, repeat the last two steps described above with the other handle. You can exit the «Learn» mode by pressing the «h/min» or «set» button. Otherwise the «Learn» mode will automatically end after 30 seconds.

Please note:

- A maximum of 2 handles can be synchronized with one SmartGuide display unit. After you synchronized the second handle, «Full» will be displayed.



- When changing batteries of the SmartGuide display unit, stored data will be erased. Therefore, please repeat the synchronization process every time you change the batteries.

Deactivating the radio transmission

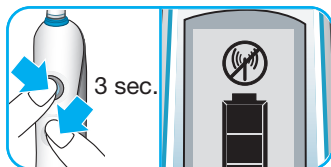
If you want to use or carry your toothbrush in surroundings where radio controlled appliances are not allowed (e.g. hospitals or aircraft), deactivate the radio transmission first.

To do so, simultaneously press the on/off and mode button for 3 seconds. The handle display shows the radio deactivation icon. If you want to





reactivate the radio transmission, press both buttons again for 3 seconds and the display icon disappears.



Environmental notice

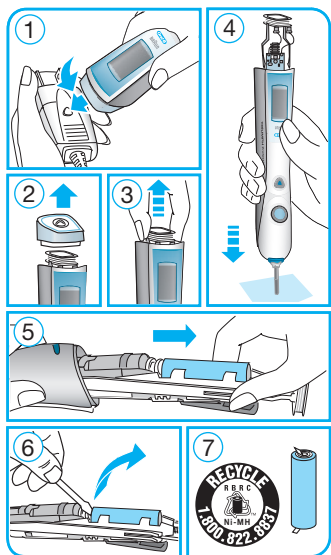
In the interest of protecting the environment, please do not dispose of the product in the household waste at the end of its useful life. Disposal can take place at an Oral-B Braun Service Center or at approved recycling or disposing locations in accordance with local regulations.

Removing batteries

Handle

At the end of the product's useful life, open the handle as shown, remove the rechargeable battery and dispose of it according to local environmental regulations.

Caution! Opening the handle will destroy the appliance and invalidate the warranty.



SmartGuide display unit

Remove fully discharged batteries immediately. Replace all batteries at the same time. Do not mix alkaline batteries with zinc carbon or rechargeable batteries.

Subject to change without notice.

The 30-Day Challenge

Take the challenge! Experience the Oral-B Triumph difference!

Oral-B Triumph with SmartGuide is the world's smartest toothbrush for thorough cleaning.

No wonder that Oral-B is the brand more dentists use themselves worldwide. In fact, we are so convinced you'll fall in love with your new toothbrush that we give you this risk-free offer. Try **Oral-B Triumph with SmartGuide** for 30 days from the date of purchase. If you are not 100% satisfied, receive a full refund. No questions asked. Guaranteed.

For a full refund, please return your handle, refills, and charging unit with your original cash register receipt. For further details, please call 1-800-566-7252 to be referred to the authorized Oral-B Braun Service Center closest to you.

U.S. only:

Attention: 30-Day Challenge
Oral-B Braun Division
The Procter & Gamble Company
Sobin Park and A Street, MS 1F
South Boston, MA 02127

Canada only:

Attention: 30-Day Challenge
Braun Canada
a division of Procter & Gamble Inc.
Toronto, ON
M5W 1C5





FOR USA ONLY

Limited 2-Year Warranty

Oral-B Braun warrants this appliance to be free of defects in material and workmanship for a period of two years from the date of original purchase at retail.

If the appliance exhibits such a defect, Oral-B Braun will, at its option, repair or replace it without cost for parts and labor. The product must be carried in or shipped, prepaid and insured (recommended), to an authorized Oral-B Braun Service Center. Proof of date of original purchase is required.

The cost to ship the product to an authorized Service Center is the responsibility of the consumer, the cost to return the product to the consumer is the responsibility of Oral-B Braun.

This warranty does not cover finishes or normal wear, nor does it cover damage resulting from accident, misuse, dirt, water, tampering, unreasonable use, service performed or attempted by unauthorized service agencies, failure to provide reasonable and necessary maintenance, including recharging, or units that have been modified or used for commercial purposes.

ALL IMPLIED WARRANTIES, INCLUDING ANY IMPLIED WARRANTY OF MERCHANTABILITY OR FITNESS FOR ANY PARTICULAR PURPOSE, ARE LIMITED IN DURATION TO TWO YEARS FROM DATE OF ORIGINAL PURCHASE. IN NO EVENT WILL ORAL-B BRAUN BE RESPONSIBLE FOR CONSEQUENTIAL DAMAGES RESULTING FROM THE USE OF THIS PRODUCT.

Some states do not allow the exclusion or limitation of incidental or consequential damages, so the above limitation may not apply to you. This warranty gives you specific legal rights, and you may have other legal rights which vary from state to state.

How to obtain service in the USA

Should this product require service, please call 1-800-566-7252 to be referred to the authorized Oral-B Braun Service Center closest to you.

To obtain service:

- A. Carry the product in to the authorized Oral-B Braun Service Center of your choice or,
- B. Ship the product to the authorized Oral-B Braun Service Center of your choice. Pack the product well. Ship the product prepaid and insured (recommended). Include a copy of your proof of purchase to verify warranty coverage, if applicable.

Declaration of conformity

This appliance complies with part 15 of the FCC rules. Operation is subject to the following two conditions: (1) this appliance may not cause harmful interference, and (2) this appliance must accept any interference received, including interference that may cause undesired operation.

Display unit: Tested to comply with FCC standards. FOR HOME OR OFFICE USE.

To change or modify any part of this appliance could void the authority to operate the equipment.





FOR CANADA ONLY

Limited 2-Year Warranty

In the event this appliance fails to function within the specified warranty period because of defects in material or workmanship, and the consumer returns the unit to an authorized service center, Braun Canada will, at its option either repair or replace the unit without additional charge to the consumer. This warranty does not cover any product which has been damaged by dropping, tampering, servicing performed or attempted by unauthorized service agencies, misuse or abuse. This warranty excludes units which have been modified or used for commercial purposes.

To the extent allowed by law, Braun Canada shall not be responsible for loss of the product, loss of time, inconvenience, commercial loss, special or consequential damages. The provisions of this warranty are in addition to and not a modification of or subtraction from the statutory warranties and other rights and remedies contained in applicable provincial legislation.

How to obtain service in Canada

Should this product require service, please call 1-800-566-7252 to be referred to the authorized Oral-B Braun Service Center closest to you.

To obtain service:

- A. Carry the product in to the authorized Oral-B Braun Service Center of your choice or,
- B. Ship the product to the authorized Oral-B Braun Service Center of your choice. Pack the product well. Ship the product prepaid and insured (recommended). Include a copy of your proof of purchase to verify warranty coverage, if applicable.

Declaration of conformity

Operation is subject to the following two conditions: (1) this appliance may not cause harmful interference, and (2) this appliance must accept any interference received, including interference that may cause undesired operation.

