



powered
by **BRAUN**

BLACK/WHITE 7000
PRO 5000-5550
Deep Sweep™ 5000-5550





English	6
Español	16
Français	24

Internet:

www.oralb.com
www.oralb.ca
www.braun.com
www.service.braun.com

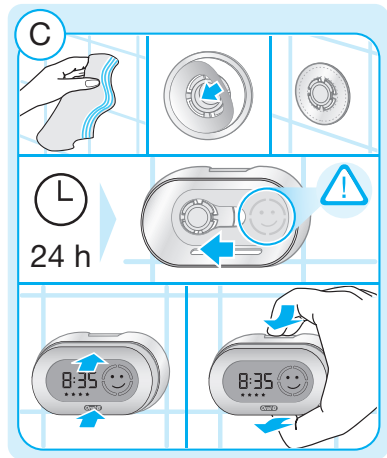
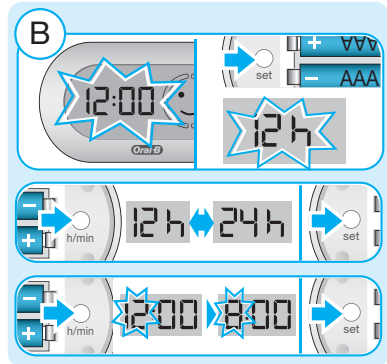
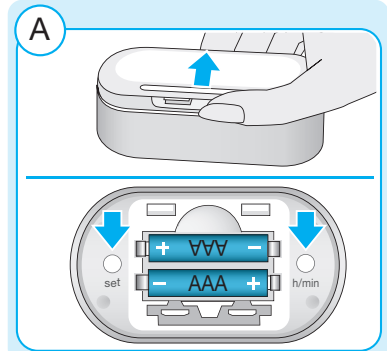
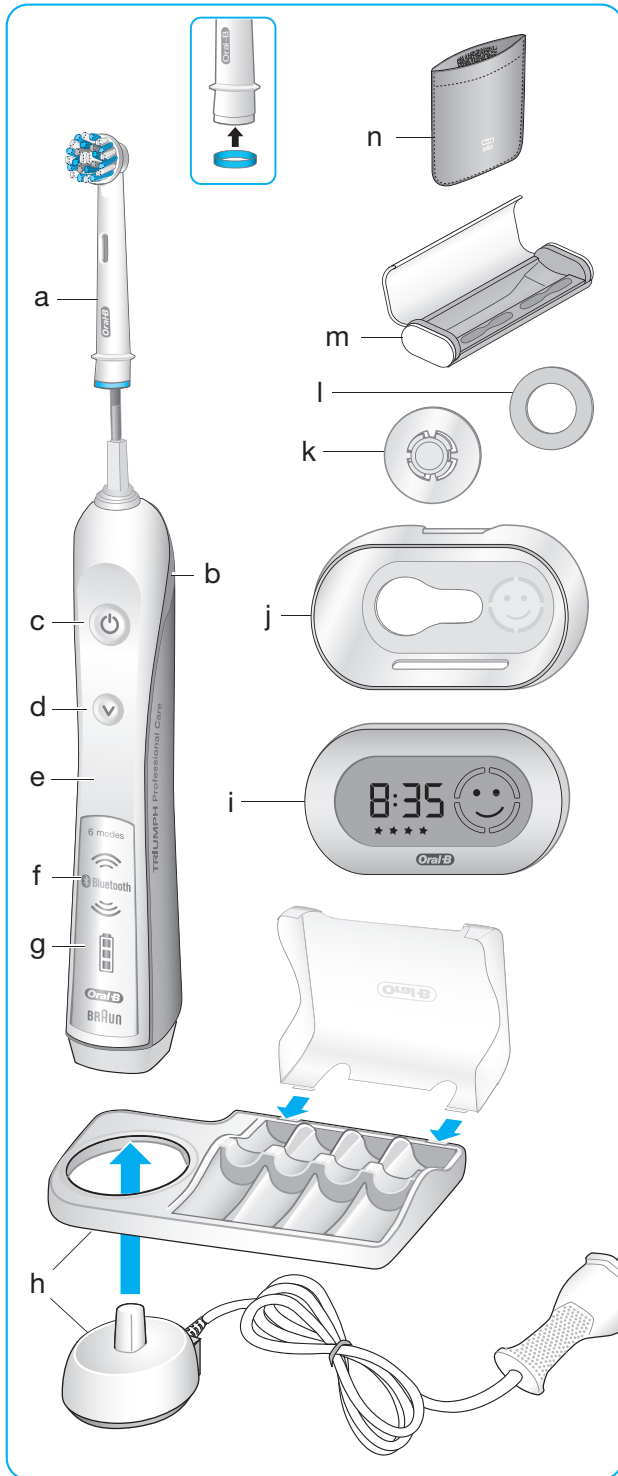
Braun GmbH
Frankfurter Strasse 145
61476 Kronberg
Germany/Allemagne/Alemania

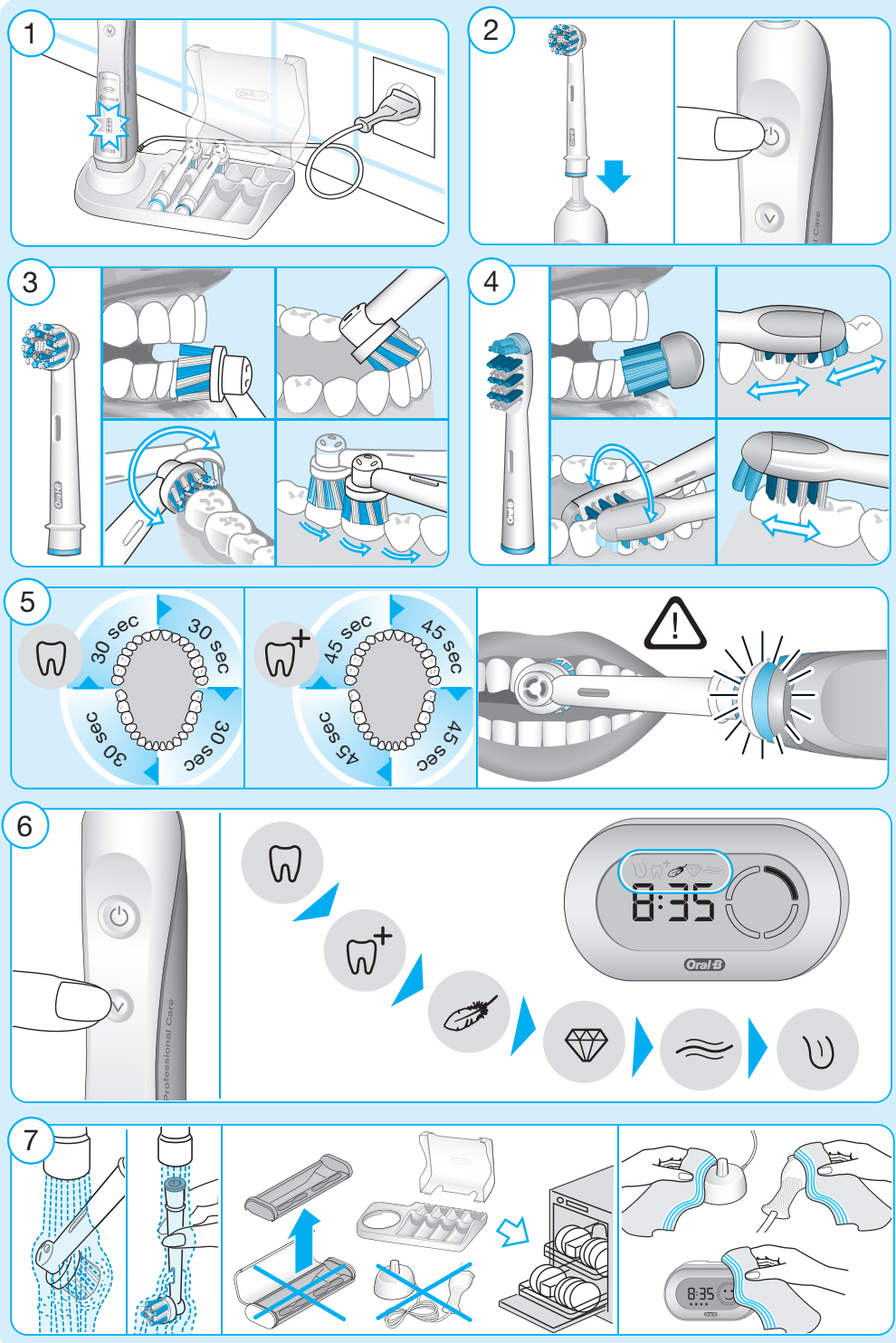
Charger type 3757
Handle type 3764
Display type 3742

Tipo de cargador 3757
Tipo de mango 3764
Tipo de pantalla 3742

Type de chargeur 3757
Type de manche 3764
Type d'affichage 3742

96846214/V-14
GB/E/F







IMPORTANT SAFEGUARDS

Your **Oral-B®** toothbrush has been carefully designed to offer you and your family a unique brushing experience that is both safe and effective.

Read all instructions before using.

DANGER

In order to reduce the risk of electrocution:

1. Do not place or store the charger where it can fall or be pulled into a tub or sink.
2. Do not place the charger in water or other liquid.
3. Do not reach for a charger that has fallen into water. Unplug immediately.
4. Do not use while bathing.

WARNING

To reduce the risk of burns, electrocution, fire or injury:

1. Close supervision is necessary when this product is used by, on, or near children or invalids.
2. Use this product only for its intended use as described in this manual. Do not use attachments not recommended by the manufacturer.
3. Keep cord away from heated surfaces.
4. Never drop the appliance or insert any object into any opening of the appliance.
5. Never operate this product if it has a damaged cord or plug, if it is not working properly, if it has been dropped or damaged or if it has been dropped into water. If any of these occur, please contact a service center and return the product for examination and repair.

IMPORTANT

1. Periodically check the cord for damage. If cord is damaged, take the charging unit to an Oral-B Service Center. A damaged or non-functioning unit should no longer be used.
2. If the toothbrush handle is dropped, the brush head should be replaced before the next use even if no damage is visible.
3. Do not touch the power plug with wet hands. This can cause an electric shock.
4. When unplugging, always hold the power plug instead of the cord.
5. Do not modify or repair the product. This may cause fire, electric shock or injury. Consult your dealer for repairs or contact an Oral-B Service Center. Do not disassemble the product except when disposing of the battery.
6. When taking out the battery for disposal, use caution not to short the positive (+) and negative (-) terminals.
7. This product is not intended for use by children under age three.
8. This toothbrush is a personal care device and is not intended for use on multiple patients in a dental practice or institution.

CAUTION

If you are undergoing treatment for any oral care condition, consult your dental professional prior to use.

SAVE THESE INSTRUCTIONS





English

Important Information

- Your Oral-B 5000–7000 can be used with an interactive wireless display (i) and/or with your Smart Phone (find details under «Connecting your toothbrush to your Smart Phone»).
- To avoid electromagnetic interference and/or compatibility conflicts, deactivate the radio transmission of your toothbrush handle (e) before using it in restricted surroundings, such as aircrafts or specially marked areas in hospitals.
- Deactivate radio transmission by simultaneously pressing the on/off (c) and mode button (d) for 3 seconds until the radio transmission display (f) goes off. Follow the same procedure to reactivate transmission again.
- Persons with pacemakers should always keep the toothbrush more than six inches (15 centimeters) from the pacemaker while turned on. Anytime you suspect interference is taking place, deactivate the radio transmission of your toothbrush.

up to 24 hours and enables up to ten days of regular brushing (twice a day, 2 minutes).

Note: After deep discharge, the blue lights might not flash immediately; it can take up to 10–15 minutes.

- If the rechargeable battery is low a blue light is flashing on the charge level display (g) for some seconds when turning your toothbrush on/off. If the rechargeable battery is empty the motor will stop and an orange light is flashing on the charge level display; it will need a 40-minute charge before you can use it for a 2-minute brushing.
- For everyday use, the toothbrush handle can be stored on the charging unit to maintain it at full power. Overcharging is impossible. To maintain the maximum capacity of the rechargeable battery, unplug the charging unit and fully discharge the handle with regular use at least every 6 months.

Description

- a Brush head
- b Pressure sensor light (red) / visual timer light (green)
- c On/off button
- d Brushing mode button
- e Handle
- f Radio transmission display (with *Bluetooth*® wireless technology)
- g Charge level display
- h Charging unit (basic charger and brush head compartment with protective cover)
- i SmartGuide (depending on model)
- j SmartGuide holder (depending on model)
- k Wall mount (depending on model)
- l Adhesive ring (depending on model)
- m Travel case (depending on model)
- n Travel charger pouch (depending on model)

Specification

For voltage specifications refer to the bottom of the charging unit.

SmartGuide adjustments

(depending on model)

The SmartGuide (i) comes with a demonstration mode. Deactivate this mode by removing the compartment cover in the back (picture A, page 4) and push the «set» or «h/min» button.

A flashing «12:00» indicates that you can now adjust the clock time.

Note: If the SmartGuide display is blank before first use (no active demonstration mode / no batteries inserted) the batteries will need to be replaced/inserted before continuing.

Batteries are supplied.

Clock Time

Press and hold the «set» button until «12h» is displayed. By briefly pressing the «h/min» button, you can toggle between «12h» or «24h» daytime format. Push «set» to confirm your choice. Then the hour digit starts flashing. Press the «h/min» button until the right hour appears and confirm with «set». Proceed same way to set both minute digits (picture B, page 4).

Connecting and charging

Your toothbrush has a waterproof handle, is electrically safe and designed for use in the bathroom.

- Plug the charger (h) into an electrical outlet and place the toothbrush handle (e) on the charging unit.
- The flashing blue lights indicate that the toothbrush is charging (picture 1, page 5); once it is fully charged, the lights turn off. A full charge can take



SmartGuide Icons

(depending on model)

Displayed Icon Meaning



«Daily Clean» mode



«Deep Clean» mode



«Sensitive» mode



«Whitening» mode



«Massage» mode



«Tongue Cleaning» mode



Too much pressure is applied. Reduce the brushing force.



«Quadrant circle»
Move to the next quadrant of your mouth when the relevant segment flashes.



You reached the dentist recommended 2-minute brushing time (3-minute brushing time within the «Deep Clean» mode).



After use your brushing time will be rewarded with stars.



SmartGuide batteries are low. Change batteries of the SmartGuide.

Using your toothbrush

Brushing technique

Wet brush head and apply any kind of toothpaste. To avoid splashing, guide the brush head to your teeth before switching on the appliance (picture 2, page 5). When brushing your teeth with one of the Oral-B **oscillating-rotating brush heads** guide the brush head slowly from tooth to tooth, spending a few seconds on each tooth surface (picture 3, page 5). When using the Oral-B **«Deep Sweep» brush head** place the toothbrush bristles against the teeth at a

slight angle towards the gumline. Apply light pressure and start brushing in back and forth motions, just like you would do with a manual toothbrush (picture 4, page 5).

With any brush head start brushing the outsides, then the insides and finally the chewing surfaces. Brush all four quadrants of your mouth equally. You may also consult your dentist or dental hygienist about the right technique for you.

In the first days of using any electric toothbrush, your gums may bleed slightly. In general, bleeding should stop after a few days. Should it persist after 2 weeks, please consult your dentist or dental hygienist. If you have sensitive teeth and gums, Oral-B recommends using the «Sensitive» mode (optional in combination with the Oral-B Sensitive Gum Care brush head).

Timer

You can choose between «Professional» or «2-Minute» timer.

The «2-Minute» timer signals with a short stuttering sound and a green light (b) that the dentist recommended 2-minute brushing time has been reached.

The «Professional» timer signals with a short stuttering sound and a green light at 30-seconds intervals to move to the next quadrant of your mouth (45 seconds intervals within «Deep Clean» mode) (picture 5, page 5). A long stuttering sound and a green light indicate the end of the professionally recommended 2-minute brushing time (3-minute brushing time within «Deep Clean» mode).

The timer memorizes the elapsed brushing time, even when the handle is briefly switched off during brushing. The timer resets if pausing longer than 30 seconds or briefly pressing the mode button (d) during pause.

Personalizing the timer

Your toothbrush comes with the «Professional» timer activated. To change this, press and hold the brushing mode button for 3 seconds until the SmartGuide shows «:30» and «timer».

Briefly press the on/off button to switch to the «2-Minute» timer. Push the mode button to confirm.

Pressure sensor

If you put excessive pressure on your teeth, the red pressure sensor light (b) will light up (picture 5, page 5). Additionally, when brushing in «Daily Clean» or «Deep Clean» mode, the brushing mode will change to the «Sensitive» mode. Periodically check the operation of the pressure sensor by pressing moderately on the brush head during use.

Note: In «Tongue Cleaning» mode the pressure sensor is turned off.





Brushing modes (depending on model)

Your toothbrush offers different brushing modes:

- «Daily Clean» – Standard mode for daily mouth cleaning
- «Deep Clean» – Mouth cleaning with extended brushing time of 45 seconds per quadrant (3 minute total brushing time)
- «Sensitive» – Gentle, yet thorough cleaning for sensitive areas
- «Whitening» – Polishing for occasional or everyday use
- «Massage» – Gentle massage of gums
- «Tongue Cleaning» – Tongue cleaning for occasional or everyday use

When operating the «Tongue Cleaning» mode, we recommend using the «Sensitive Gum Care» brush head. You can brush your tongue either with or without toothpaste. Brush the whole area of your tongue systematically in gentle movements. The recommended brushing time is 20 seconds; the SmartGuide will indicate completion with a smiley face.

Your toothbrush automatically starts in the «Daily Clean» mode. To switch to the other modes, successively press the mode button (picture 6, page 5). To return from any mode back to the «Daily Clean» mode, press and hold the mode button. The brushing mode is memorized even when the handle is briefly switched off during brushing. When pausing longer than 30 seconds or briefly pressing the mode button (d) during pause the brushing mode resets to the «Daily Clean» mode.

Brush heads

Oral-B offers you a variety of different Oral-B brush heads that fit your Oral-B toothbrush handle.

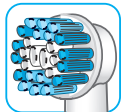
Our **oscillating-rotating brush heads** can be used for tooth-by-tooth precision cleaning.

Oral-B CrossAction brush head



Our most advanced brush head. Angled bristles for a precise clean. Lifts and powers away plaque.

Oral-B Precision Clean brush head



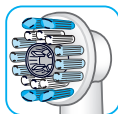
provides effective and gentle cleaning action for both teeth and gums. The brush head cups each tooth with longer and denser bristles and reach deep between teeth at the same time.

Oral-B FlossAction brush head



features micropulse bristles that allow for an outstanding plaque removal in the interdental areas.

Oral-B ProWhite brush head



features a special polishing cup to naturally whiten your teeth. Please note that children under 12 years old should not use the Oral-B ProWhite brush head.

Oral-B Sensitive Gum Care brush head



provides thorough cleaning for sensitive teeth and gums. It has an extra soft bristle texture that is gentle on teeth and gums.

Oral-B Ortho brush head



with special tufting pattern thoroughly cleans and gently removes plaque from teeth with braces.

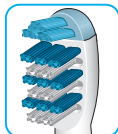
Oral-B Power Tip brush head



The Power Tip is designed for cleaning between teeth as well as around bridges, crowns and implants. Position the Power Tip at a 45 degree angle to the gumline. Slowly guide the Power Tip along the gumline, pausing between teeth for excellent results.

Our **dynamic «Deep Sweep» brush head** can be used with all common brushing techniques.

Oral-B Deep Sweep brush head



features triple zone cleaning action for outstanding plaque removal, even in between teeth.

Oral-B brush heads feature light blue INDICATOR® bristles to help you monitor brush head replacement need. With thorough brushing, twice a day for two minutes, the blue color will fade halfway down approximately in a 3-month period. If the bristles splay before the color recedes, you may exert too much pressure on teeth and gums.

We do not recommend using the Oral-B FlossAction or Oral-B ProWhite brush head with braces. You may use the Oral-B Ortho brush head, specifically designed to clean around braces and wires.





Synchronizing your toothbrush (depending on model)

To avoid interference of display messages when using more than one Oral-B toothbrush with radio transmission and SmartGuide in the same household, you need to assign the handles to their respective SmartGuide.

You can synchronize a maximum of 2 handles with one SmartGuide. To do so, push the «h/min» button in the battery compartment for at least 3 seconds.

The SmartGuide shows «L---». Turn on your handle to start the synchronization process. It is finished when «L-1-» is displayed. Turn off the handle. To assign a second handle to the same SmartGuide turn on the other handle until «L-2-» is displayed. After having synchronized the second handle, «Full» will be displayed. Exit the synchronization mode by pressing the «h/min» or «set» button, otherwise it will end automatically after 30 seconds.

Connecting your toothbrush to your Smart Phone

Download the Oral-B™ app for free from App StoreSM or Google Play™. The Oral-B™ app gives you the opportunity to use your time more efficiently, chart your brushing progress and customize your toothbrush settings (for more benefits see the Oral-B™ app instructions).

- Before using the Oral-B™ app make sure *Bluetooth* is activated on your smart phone (for directions please refer to your smart phone's user manual). Your toothbrush will appear in the list of devices as: «Oral-B toothbrush».

Note: Oral-B™ app functionality is limited if *Bluetooth* is deactivated.

- Start the Oral-B™ app. You can use the app and your SmartGuide (i) at the same time.
- Once you start using your toothbrush by lifting it off the plugged-in charger (h) or pressing any button (c)/(d), it automatically connects to the Oral-B™ app. If no connection has been established, briefly press the mode button (d) on your toothbrush handle and wait for a connection.
- Any further app instructions will be displayed on your smart phone.
- Keep your smart phone in close proximity when using it with your toothbrush handle. Make sure the smart phone is safely positioned in a dry place.

Note: Your smart phone must support *Bluetooth* 4.0 (or higher) in order to connect to your toothbrush handle.

10

Cleaning recommendations

After brushing, rinse your brush head under running water with the handle switched on. Switch off and remove the brush head. Clean handle and brush head separately; wipe them dry before reassembling. Disassemble the charging unit before cleaning. Brush head compartment and protective cover are dishwasher-safe. Both basic charger and SmartGuide should be cleaned with a damp cloth only.

The removable inner part of the travel case (m) is dishwasher-safe. The outer case should only be wiped clean with a damp cloth (picture 7, page 5). Make sure that travel case parts are completely dry before reassembling and toothbrush/brush heads are dry before storing in the travel case.

Note: Clean stains on the travel case surface immediately. Store travel case in a clean and dry place.

Wall mount (depending on model)

Use the adhesive ring (l) with the wall mount (k) if you prefer to mount the SmartGuide on a wall, mirror or other surface. Make sure the chosen surface is clean and dry before adhering. Stick the adhesive ring on the even side of the wall mount and press it firmly to the wall. Wait 24h before sliding the SmartGuide holder (j) into the fixed wall mount. Place the SmartGuide into its holder (picture C, page 4). The adhesive ring will not work on dirt-repellent surfaces.

Subject to change without notice.

Environmental Notice

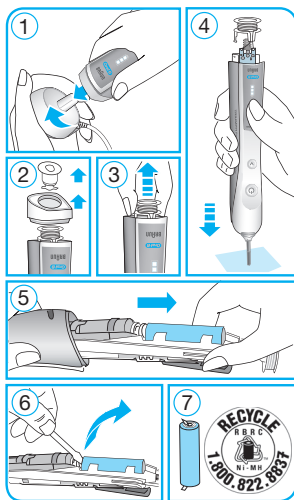
Product contains batteries and/or recyclable electric waste. For environment protection do not dispose in household waste, but for recycling take to electric waste collection points provided in your country.



Removing batteries

Handle battery

At the end of the product's useful life, open the handle as shown, remove the rechargeable battery and dispose of it according to local environmental regulations.



Caution! Opening the handle will destroy the appliance and invalidate the warranty.

SmartGuide batteries

Batteries may leak if empty or not used for a long time. Avoid skin contact whilst handling leaking batteries.

Keep away from children.
Do not swallow. If swallowed, seek medical advice at once.

Remove fully discharged batteries immediately.
Replace all batteries at the same time.
Do not mix used and new batteries, different brands or types. Do not disassemble, recharge or dispose of in fire.

Important information on Bluetooth® radio module

Although all indicated functions on the *Bluetooth* device are supported, Oral-B does not ensure 100% reliability in connection, and feature operation consistency.

Operation performance and connection reliability are direct consequences of each individual *Bluetooth* device, software version, as well as the operating system of those *Bluetooth* devices and company security regulations implemented on the device. Oral-B adheres to and strictly implements the *Bluetooth* standard by which *Bluetooth* devices can communicate and function in Oral-B toothbrushes. However, if device manufacturers fail to implement this standard, *Bluetooth* compatibility and features will be further compromised and the user may

experience functional and feature-related issues. Please note that the software on the *Bluetooth* device can significantly affect compatibility and operation.

Satisfaction Guaranteed or Your Money Back!

Try Oral-B for 60 days, starting from the day of purchase. If you are not 100% satisfied, receive a full refund via a pre-paid card. No questions asked. For a full refund, please return your product along with your name, address, contact phone number and the original cash register receipt indicating purchase price and date to the address below.

U.S. only:

Oral-B 60 Day Satisfaction Guarantee
4608 Appliance Drive
Suite 2
Belcamp, MD 21017

Canada only:

Attention: 60-Day Challenge
Braun MBG
PO Box 12060
Saint John, NB
E2L 5E7

Your Oral-B toothbrush must be returned in its original packaging and be postmarked no later than 60 days after the date of purchase. Please allow 6–8 weeks for handling. The shipment cost to return the product is the responsibility of the consumer.

Sorry: No refunds will be made for any Oral-B product damaged by accident, neglect, unreasonable use or lost in the post.

Terms and conditions apply. For further details please contact our customer service.

Warranty replacement brush heads

Oral-B warranty will be voided if electric rechargeable handle damage is found to be attributed to the use of non-Oral-B replacement brush heads.

Oral-B does not recommend the use of non Oral-B replacement brush heads.

- Oral-B has no control over the quality of non-Oral-B replacement brush heads. Therefore, we cannot ensure the cleaning performance of non-Oral-B replacement brush heads, as communicated with the electric rechargeable handle at time of initial purchase.
- Oral-B cannot ensure a good fit of non-Oral-B replacement brush heads.
- Oral-B cannot predict the long-term effect of non-Oral-B replacement brush heads on handle wear.

All Oral-B replacement brush heads carry the Oral-B logo and meet Oral-B's high quality standards. Oral-B does not sell replacement brush heads or handle parts under any other brand name.





Trouble Shooting

Problem	Possible reason	Remedy
TOOTHBRUSH		
Oral-B handle does not operate with SmartGuide (depending on model).	<ol style="list-style-type: none"> 1. Synchronizing with SmartGuide failed 2. Radio transmission is deactivated; radio transmission display (f) is turned off. 3. Handle has no radio transmission installed 	<ol style="list-style-type: none"> 1. Synchronize your toothbrush(es) (again). Follow steps under «Synchronizing your Toothbrush» 2. Activate the radio transmission by simultaneously pressing the on/off (c) and mode button (d) for 3 seconds until the radio transmission display (f) turns on. 3. Oral-B handle with radio transmission installed can operate with SmartGuide only.
<ol style="list-style-type: none"> 1. Short stuttering sounds/flashing green light every 30 seconds (45 seconds in Deep Clean mode) 2. Stuttering sound/flashing green light only after 2 minutes (3 minutes in Deep Clean mode) 	<ol style="list-style-type: none"> 1. «Professional timer» activated 2. «2-Minute timer» activated 	<ol style="list-style-type: none"> 1. Set your timer to 2-Minute timer; follow steps under «Personalizing the timer» 2. Set your timer to Professional timer (stuttering sounds/flashing green light every 30 seconds); follow steps under «Personalizing the timer»
Gums bleed slightly	<ol style="list-style-type: none"> 1. May happen in first days of usage 2. Brush head 3. Brushing mode 	<ol style="list-style-type: none"> 1. Bleeding should stop after a few days. Should it persist after 2 weeks, please consult your dentist or dental hygienist. 2. Try using the Oral-B «Sensitive» brush head. 3. Try using the «Sensitive» mode
BRUSH HEADS		
Oral-B brush head does not fit Oral-B handle	Oral-B brush head not compatible with your handle	Oral-B brush heads that fit your Oral-B handle do not fit «Pulsonic», «VitalitySonic», «Sonic Complete», «CrossAction Power»
APP		
Toothbrush does not operate (properly) with Oral-B app	<ol style="list-style-type: none"> 1. Oral-B app is turned off. 2. <i>Bluetooth</i> is not activated on your smart phone. 3. Radio transmission is deactivated; radio transmission display (f) is turned off. 4. Connection to <i>Bluetooth</i> has been lost. 5. Your smart phone does not support <i>Bluetooth</i> 4.0 (or higher). 	<ol style="list-style-type: none"> 1. Turn on Oral-B app. 2. Activate <i>Bluetooth</i> on your smart phone; described in its user manual. 3. Activate the radio transmission by simultaneously pressing the on/off (c) and mode button (d) for 3 seconds until the radio transmission display (f) turns on. 4. Briefly press the mode button (d) to re-connect. Keep your smart phone in close proximity when using it with the toothbrush handle. 5. Your smart phone must support <i>Bluetooth</i> 4.0 (or higher) in order to connect to your toothbrush handle.





FOR USA ONLY

Limited 2-Year Warranty

Oral-B warrants this appliance to be free of defects in material and workmanship for a period of two years from the date of original purchase at retail.

If the appliance exhibits such a defect, Oral-B will, at its option, repair or replace it without cost for parts and labor. The product must be carried in or shipped, prepaid and insured (recommended), to an authorized Oral-B Service Center. Proof of date of original purchase is required.

The cost to ship the product to an authorized Service Center is the responsibility of the consumer, the cost to return the product to the consumer is the responsibility of Oral-B. This warranty does not cover finishes or normal wear, nor does it cover damage resulting from accident, misuse, dirt, water, tampering, unreasonable use, service performed or attempted by unauthorized service agencies, failure to provide reasonable and necessary maintenance, including recharging, or units that have been modified or used for commercial purposes.

This appliance is equipped with a *Bluetooth* Smart approved radio module. Failure to establish a *Bluetooth* Smart connection to specific smart phones is not covered under the device guarantee, unless the *Bluetooth* radio module of this appliance is damaged. The *Bluetooth* devices are warranted by their own manufacturers and not by Oral-B. Oral-B does not influence or make any recommendations to device manufacturers, and therefore Oral-B does not assume any responsibility for the number of compatible devices with our *Bluetooth* systems.

Oral-B reserves the right, without any prior notice, to make any technical modifications or changes to system implementation of device features, interface, and menu structure changes that are deemed necessary to ensure that Oral-B systems function reliably.

ALL IMPLIED WARRANTIES, INCLUDING ANY IMPLIED WARRANTY OF MERCHANTABILITY OR FITNESS FOR ANY PARTICULAR PURPOSE, ARE LIMITED IN DURATION TO TWO YEARS FROM DATE OF ORIGINAL PURCHASE. IN NO EVENT WILL ORAL-B BE RESPONSIBLE FOR CONSEQUENTIAL DAMAGES RESULTING FROM THE USE OF THIS PRODUCT.

Some states do not allow the exclusion or limitation of incidental or consequential damages, so the above limitation may not apply to you. This warranty gives you specific legal rights, and you may have other legal rights which vary from state to state.

How to obtain service in the USA

Should this product require service, please call 1-800-566-7252 to be referred to the authorized Oral-B Service Center closest to you.

To obtain service:

- A. Carry the product in to the authorized Oral-B Service Center of your choice or,
- B. Ship the product to the authorized Oral-B Service Center of your choice. Pack the product well. Ship the product prepaid and insured (recommended). Include a copy of your proof of purchase to verify warranty coverage, if applicable.

To obtain original Oral-B replacement parts and accessories:

Contact an authorized Oral-B Service Center.

Please call 1-800-566-7252 to be referred to the authorized Oral-B Service Center closest to you.



To order original Oral-B replacement parts and accessories (including replacement brush heads) by phone: Please call 1-800-566-7252.

To speak to an Oral-B Consumer Service Representative: Please call 1-800-566-7252.

Declaration of conformity

This appliance complies with part 15 of the FCC rules. Operation is subject to the following two conditions: (1) this appliance may not cause harmful interference, and (2) this appliance must accept any interference received, including interference that may cause undesired operation.

Display unit: Tested to comply with FCC standards. FOR HOME OR OFFICE USE.

To change or modify any part of this appliance could void the authority to operate the equipment.

This equipment has been tested and found to comply with the limits for a Class B digital device, pursuant to Part 15 of the FCC Rules. These limits are designed to provide reasonable protection against harmful interference in a residential installation. This equipment generates, uses and can radiate radio frequency energy and, if not installed and used in accordance with the instructions, may cause harmful interference to radio communications. However, there is no guarantee that interference will not occur in a particular installation. If this equipment does cause harmful interference to radio or television reception, which can be determined by turning the equipment off and on, the user is encouraged to try to correct the interference by one or more of the following measures:

- Reorient or relocate the receiving antenna.
- Increase the separation between the equipment and receiver.
- Connect the equipment into an outlet on a circuit different from that to which the receiver is connected.
- Consult the dealer or an experienced radio/TV technician for help



FOR CANADA ONLY

Limited 2-Year Warranty

In the event this appliance fails to function within the specified warranty period because of defects in material or workmanship, and the consumer returns the unit to an authorized service center, Braun Canada will, at its option either repair or replace the unit without additional charge to the consumer. This warranty does not cover any product which has been damaged by dropping, tampering, servicing performed or attempted by unauthorized service agencies, misuse or abuse. This warranty excludes units which have been modified or used for commercial purposes.

This appliance is equipped with a *Bluetooth* Smart approved radio module. Failure to establish a *Bluetooth* Smart connection to specific smart phones is not covered under the device guarantee, unless the *Bluetooth* radio module of this appliance is damaged. The *Bluetooth* devices are warranted by their own manufacturers and not by Oral-B. Oral-B does not influence or make any recommendations to device manufacturers, and therefore Oral-B does not assume any responsibility for the number of compatible devices with our *Bluetooth* systems.

Oral-B reserves the right, without any prior notice, to make any technical modifications or changes to system implementation of device features, interface, and menu structure changes that are deemed necessary to ensure that Oral-B systems function reliably.

To the extent allowed by law, Braun Canada shall not be responsible for loss of the product, loss of time, inconvenience, commercial loss, special or consequential damages. The provisions of this warranty are in addition to and not a modification of or subtraction from the statutory warranties and other rights and remedies contained in applicable provincial legislation.

How to obtain service in Canada

Should this product require service, please call 1-800-566-7252 to be referred to the authorized Oral-B Service Center closest to you.

To obtain service:

- A. Carry the product in to the authorized Oral-B Service Center of your choice or,
- B. Ship the product to the authorized Oral-B Service Center of your choice. Pack the product well. Ship the product prepaid and insured (recommended). Include a copy of your proof of purchase to verify warranty coverage, if applicable.

To obtain original Oral-B replacement parts & accessories:

Contact an authorized Oral-B Service Center.

Please call 1-800-566-7252 to be referred to the authorized Oral-B Service Center closest to you.

To speak to an Oral-B Service Representative:

Please call 1-800-566-7252.

Declaration of conformity

This device complies with Industry Canada licence-exempt RSS standard(s). Operation is subject to the following two conditions: (1) this device may not cause interference, and (2) this device must accept any interference, including interference that may cause undesired operation of the device.

This Class B digital apparatus complies with Canadian ICES-003.

