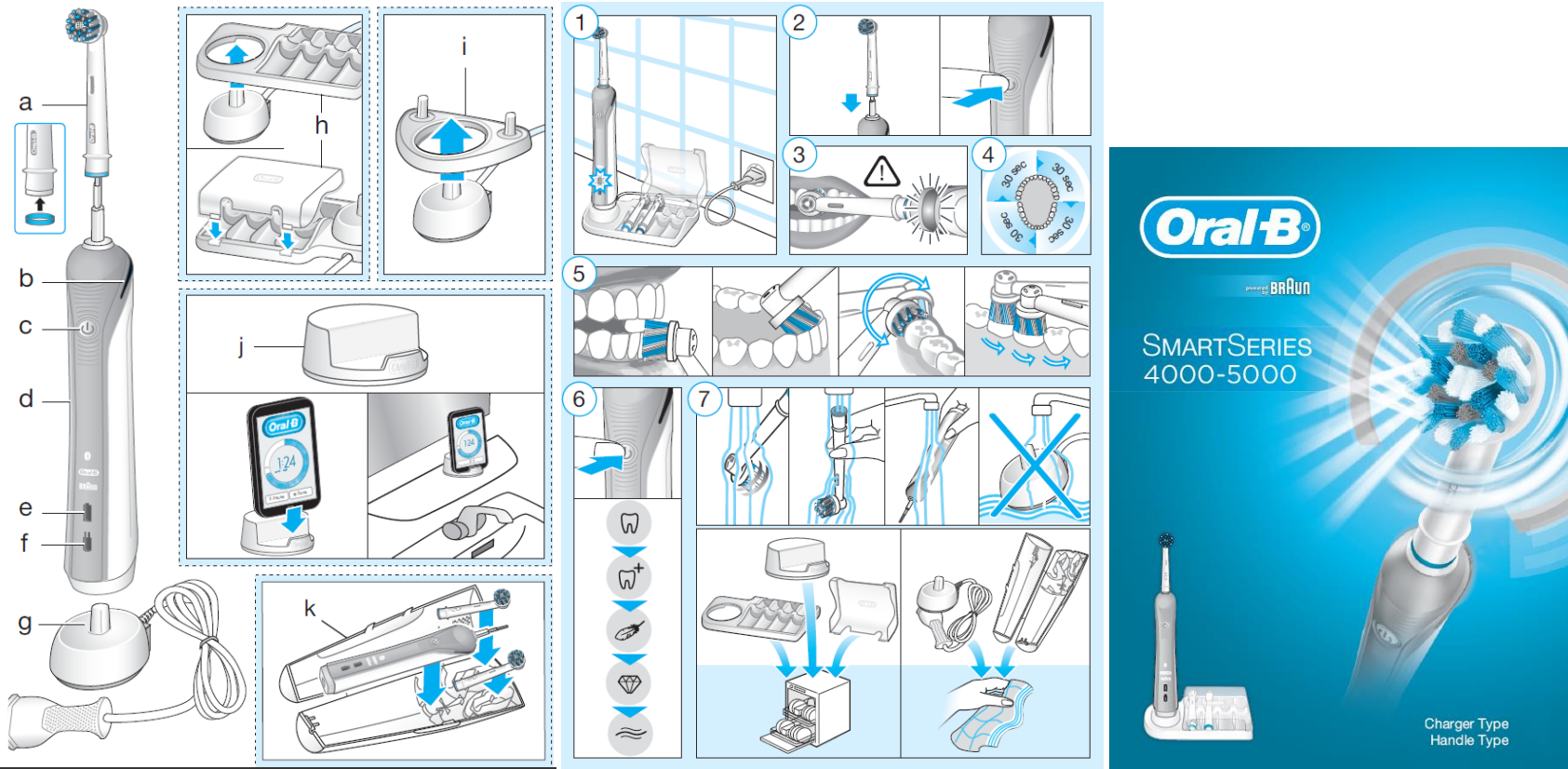


# MC D601 UI – Voyager 3 Use Instructions NA

## English Master Copy UI – D601 UI (Voyager 3) – NA Region



-> Use images as reference only; will be updated.

Responsibility	Global English Master Copy – D601 UI (generic for all D601 handles/ all modes/accessories/Teens and adult)	Comments	Translations LC (French, Spanish)
MC Creator	IPMS#: 91267217	Project Information	n/a n/a

**Cover pages information:**

<b>R&amp;D</b>	Braun GmbH Frankfurter Strasse 145 61476 Kronberg Germany/Allemagne/Alemania	<i>LE</i>	<i>n/a</i>
<b>MKT</b>	www.oralb.com www.oralb.ca www.braun.com www.service.braun.com	<i>Provide customer service contact information if needed</i>	<i>n/a</i>
<b>MKT</b>	<b>GB</b> – 0 800 731 1792 <b>IE</b> - 1 800 509 448	<i>Provide customer service contact information</i>	
<b>MKT</b>	PRO DEEP SWEEP™ powered by BRAUN  SMARTSERIES 3000–6000 with Bluetooth®	<i>Use as reference only</i>	<i>n/a</i>
<b>R&amp;D</b>	Charger Type 3757 Handle Type 3767	<i>Type Info</i>	<i>n/a</i>

**Copy elements: INTRODUCTION + WARNING STATEMENTS**

<b>GPS</b>	<b>IMPORTANT SAFEGUARDS</b>  Your Oral-B® toothbrush has been carefully designed to offer you and your family a unique brushing experience that is both safe and effective.	<i>No translation required</i>	
------------	---	--------------------------------	--

	<p>When using electrical products, especially when children are present, basic safety precautions should always be followed, including the following:</p> <p><b>Read all instructions before using.</b></p>		
<b>GPS</b>	<p><b>DANGER</b></p> <p>In order to reduce the risk of electrocution:</p> <ol style="list-style-type: none"> <li>1. Do not place or store the charger where it can fall or be pulled into a tub or sink.</li> <li>2. Do not place the charger in water or other liquid.</li> <li>3. Do not reach for a charger that has fallen into water. Unplug immediately.</li> <li>4. Do not use while bathing.</li> </ol>	<i>No translation required</i>	
<b>GPS</b>	<p><b>WARNING</b></p> <p>To reduce the risk of burns, electrocution, fire or injury:</p> <ol style="list-style-type: none"> <li>1. Close supervision is necessary when this product is used by, on, or near children or persons with disabilities.</li> <li>2. Use this product only for its intended use as described in this manual. Do not use attachments not recommended by the manufacturer.</li> <li>3. Keep cord away from heated surfaces.</li> <li>4. Never drop the appliance or insert any object into any opening of the appliance.</li> <li>5. Never operate this product if it has a damaged cord or plug, if it is not working properly, if it has been dropped or damaged or if it has been dropped into water. If any of these occur, please contact a service center and return the product for examination and repair.</li> <li>6. Do not use on self when drowsy or on another who is drowsy or sleeping.</li> <li>7. Do not use outdoors or operate where aerosol (spray) products are being used or where oxygen is being administered.</li> </ol>	<i>update</i>	
<b>GPS</b>	<p><b>IMPORTANT</b></p> <ol style="list-style-type: none"> <li>1. Periodically check the entire product/cord for damage. A damaged or non-functioning unit should no longer be used. If product/cord is damaged, take it to an Oral-B Service Center.</li> </ol>	<i>update</i>	

	<p>2. If the toothbrush handle is dropped, the brush head should be replaced before the next use even if no damage is visible.</p> <p>3. Do not touch the power plug with wet hands. This can cause an electric shock.</p> <p>4. When unplugging, always hold the power plug instead of the cord.</p> <p>5. Do not modify or repair the product. This may cause fire, electric shock or injury. Consult your dealer for repairs or contact an Oral-B Service Center.</p> <p>6. The appliance has no user serviceable parts. Do not open and disassemble device except when disposing of the battery. Follow handling and disposal instructions of the battery/device described in this manual.</p> <p>7. This product is not intended for children 3 years and under.</p> <p>8. This toothbrush is a personal care device and is not intended for use on multiple patients in a dental practice or institution.</p> <p>9. Replace brush (head) every 3 months or sooner if brush head becomes worn.</p>		
<b>GPS</b>	<p><b>CAUTION</b></p> <p>If you are undergoing treatment for any oral care condition, consult your dental professional prior to use.</p> <p><b>SAVE THESE INSTRUCTIONS</b></p>		
<b>GPS + R&amp;D</b>	<p><b>Important Information</b></p> <ul style="list-style-type: none"> <li>• Your Oral-B toothbrush can be used with your smartphone (find details under &lt;&lt;Connecting your toothbrush to your Smartphone&gt;&gt;).</li> <li>• To avoid electromagnetic interference and/or compatibility conflicts, deactivate the radio transmission before using it in restricted surroundings, such as aircrafts or specially marked areas in hospitals. Deactivate radio transmission when your toothbrush is turned off by pressing the on/off button (c) for 3 seconds. All indicator lights (b, e &amp; f) will flash simultaneously. Follow the same procedure to reactivate transmission again. Note: Every time you turn your toothbrush off, when using it without radio transmission, the indicator lights will flash simultaneously.</li> </ul>		

	<ul style="list-style-type: none"> <li>Persons with pacemakers should always keep the toothbrush more than six inches (15 centimeters) from the pacemaker while turned on. Anytime you suspect interference is taking place, deactivate the radio transmission of your toothbrush.</li> </ul>		
<b>Copy elements: INTRODUCTION + TECHNICAL DATA</b>			
R&D + MKT	<p><b>Description</b></p> <p>a Brush head b Pressure sensor light c On/off button (mode selection) d Handle (with <i>Bluetooth</i>® wireless technology) e Charge indicator light f Low charge indicator light g Charger</p> <p><b>Accessories (depending on model):</b></p> <p>h Brush head compartment with protective cover i Brush head holder j Smartphone holder k Travel case</p> <p><b>Note:</b> Content may vary based on the model purchased.</p>	update	
R&D	<p><b>Specifications</b></p> <p>For voltage specifications refer to the bottom of the charging unit. Noise level: 68 dB (A)</p>	update	
R&D	<p>220-240 V ac~ 50-60 Hz 0,9 W IP 67</p>	Reference only - Use if needed in local language	n/a
R&D + GPS	<p>This rechargeable toothbrush contains a <i>Bluetooth</i> radio which operates in the 2.4 to 2.48 GHz band with a maximum power of 1mW.</p>	Update	

	Hereby, Braun GmbH declares that the radio equipment types 3765, 3754, 3764, 3762 and 3767 are in compliance with Directive 2014/53/EU. The full text of the EU declaration of conformity is available at the following internet address: <a href="http://www.oralb.com/ce">www.oralb.com/ce</a>		
R&D + GPS	Charger Type 3757 Handle Type 3767	Reference only - Use if needed in local language	n/a
<b>Copy elements: INSTRUCTIONS</b>			
R&D + MKT	<p><b>Charging and Operating</b></p> <p>Your toothbrush has a waterproof handle, is electrically safe and designed for use in the bathroom.</p> <ul style="list-style-type: none"> <li>You may use your toothbrush right away or charge it briefly by placing it on the plugged-in charger (g).</li> </ul> <p>Note: In case the battery is empty (no charging light illuminated (e) while charging or no reaction when pressing the on/off button (c)), charge at least for 30 minutes.</p> <ul style="list-style-type: none"> <li>The green charge indicator light (e) flashes while the handle is being charged. Once it is fully charged, the light turns off. A full charge takes typically 12 hours and enables at least 2 weeks of regular brushing (twice a day, 2 minutes) (picture 1).</li> </ul> <p>Note: After deep discharge, the charge indicator light might not flash immediately; it can take up to 30 minutes.</p> <ul style="list-style-type: none"> <li>If the battery is running low, the red charge indicator light (f) is flashing for a few seconds when turning your toothbrush on/off and the motor is reducing its speed. Once the battery is empty, the motor will stop; it will need at least a 30-minute charge for one usage.</li> <li>You can always store the handle on the plugged-in charging unit to maintain it at full power; a battery overcharge is prevented by device.</li> </ul> <p>Note: Store handle at room temperature for optimal battery maintenance.</p>	Update	


	<p><b>Caution:</b> Do not expose handle to temperatures higher than 50 °C.</p>		
<p><b>R&amp;D</b> <b>+</b> <b>MKT</b></p>	<p><b><u>Using your toothbrush</u></b> <b>Brushing technique</b></p> <p>Wet brush head and apply any kind of toothpaste. To avoid splashing, guide the brush head to your teeth before switching on the appliance (picture 2). When brushing your teeth with one of the Oral-B <b>oscillating-rotating brush heads</b> guide the brush head slowly from tooth to tooth, spending a few seconds on each tooth surface (picture 5).</p> <p>When using the Oral-B <b>«DeepSweep» brush head</b> place the toothbrush bristles against the teeth at a slight angle towards the gumline. Apply light pressure and start brushing in back and forth motions, just like you would do with a manual toothbrush.</p> <p>With any brush head start brushing the outsides, then the insides and finally the chewing surfaces. Brush all four quadrants of your mouth equally.</p> <p>You may also consult your dentist or dental hygienist about the right technique for you.</p> <p>In the first days of using any electric toothbrush, your gums may bleed slightly. In general, bleeding should stop after a few days. Should it persist after 2 weeks, please consult your dentist or dental hygienist. If you have sensitive teeth and/or gums, Oral-B recommends using the «Sensitive» mode (depending on model) (optional in combination with an Oral-B «Sensitive» brush head).</p>	<p><i>Delete: (picture 6)</i></p>	

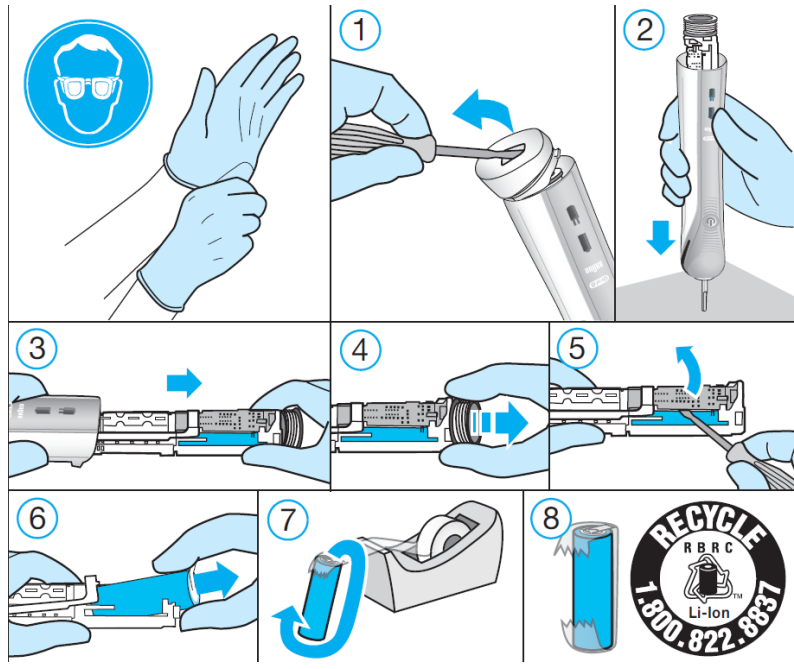
R&D + MKT	<b>Brushing modes (depending on model)</b>						<i>Update</i>	
	<b>1-mode</b>	<b>2-modes</b>	<b>3-modes</b>	<b>4-modes</b>	<b>5-modes</b>	<b>Brushing modes</b> (for handle type 3767)		
	✓	✓	✓	✓	✓	<b>Daily Clean –</b> Standard for daily mouth cleaning		
					✓	<b>Pro Clean –</b> For an extraordinary clean feeling (operated with a higher frequency)		
		✓	✓	✓	✓	<b>Sensitive –</b> Gentle, yet thorough cleaning for sensitive areas		
			✓	✓	✓	<b>Whitening –</b> Exceptional polishing for occasional or everyday use		
			✓	✓	<b>Gum Care –</b> Gentle massage of gums			
R&D + MKT	<p>Your toothbrush automatically starts in the «Daily Clean» mode. To switch to other modes, successively press the on/off button (picture 6). Switch off the toothbrush by holding the on/off button until the motor stops.</p> <p>Note: You can set/advance the mode functionality via Oral-B™ App.</p>						<i>Update</i>	



<b>R&amp;D</b> <b>+</b> <b>MKT</b>	<b>Professional Timer</b> A short stuttering sound at 30-second intervals reminds you to brush all four quadrants of your mouth equally (picture 4). A long stuttering sound indicates the end of the professionally recommended 2-minute brushing time. If the toothbrush is turned off during brushing, the elapsed brushing time will be memorised for 30 seconds. When pausing longer than 30 seconds the timer resets. Note: You can set/advance the timer functionality via Oral-B™ App.	<i>Update</i>	
<b>R&amp;D</b> <b>+</b> <b>MKT</b>	<b>Pressure sensor</b> If too much pressure is applied, the pressure sensor light (b) will light up in red, notifying you to reduce pressure. In addition the pulsation of the brush head will stop and the oscillation movement of the brush head will be reduced (during «Daily Clean», «Pro Clean» and «Sensitive» mode) (picture 3). Periodically check the operation of the pressure sensor by pressing moderately on the brush head during use.	<i>update</i>	
<b>R&amp;D</b> <b>+</b> <b>MKT</b>	<b>Brush heads</b> Oral-B offers you a variety of different Oral-B brush heads that fit your Oral-B toothbrush handle.  Our <b>oscillating-rotating brush heads</b> can be used for tooth-by-tooth precision cleaning.  <u>Oral-B CrossAction brush head</u> Our most advanced brush head. Angled bristles for a precise clean. Lifts and powers away plaque.  <u>Oral-B FlossAction brush head</u> features micropulse bristles that allow for an outstanding plaque removal in the interdental areas.  <u>Oral-B 3D White brush head</u> features a special polishing cup to naturally whiten your teeth. Please note that children under 12 years old should not use the Oral-B «3D White» brush head.		

<b>R&amp;D</b> <b>+</b> <b>MKT</b>	<p><u>Oral-B Sensi Ultrathin brush head</u> features a combination of regular bristles to clean teeth surfaces and ultrathin bristles for a gentle brushing experience on the gumline.</p> <p>Most Oral-B brush heads feature light blue INDICATOR® bristles to help you monitor brush head replacement need. With thorough brushing, twice a day for two minutes, the blue color will fade halfway approximately within 3 months, indicating the need to exchange your brush head. If the bristles splay before the color recedes, you may exert too much pressure on teeth and gums.</p> <p>We do not recommend using the Oral-B «FlossAction» or Oral-B «3D White» brush head with braces. You may use the Oral-B «Ortho» brush head, specifically designed to clean around braces and wires.</p>	<i>Update</i>	
<b>R&amp;D</b> <b>+</b> <b>MKT</b>	<p><b>Connecting your toothbrush to your Smartphone</b></p> <p>The Oral-B™ App is available for mobile devices running iOS or Android operating systems. It can be downloaded for free from App Store<sup>(SM)</sup> or Google Play™.</p> <p>The Oral-B™ App gives you the opportunity to chart your brushing progress and customize your toothbrush settings (for many more benefits see the Oral-B™ App instructions).</p> <ul style="list-style-type: none"> <li>• Start the Oral-B™ App. It will guide you through the entire <i>Bluetooth</i> pairing procedure.</li> </ul> <p>Note: Oral-B™ App functionality is limited if <i>Bluetooth</i> wireless technology is deactivated on your smartphone (for directions please refer to your smartphone’s user manual).</p> <ul style="list-style-type: none"> <li>• Once the app asks you, please activate <i>Bluetooth</i> by lifting the toothbrush off the plugged-in charger (g) or briefly turning your toothbrush on and off (c). It automatically connects to the Oral-B™ App.</li> <li>• Any app instructions will be displayed on your smartphone.</li> </ul>	<i>Update</i>	

	<ul style="list-style-type: none"> <li>• Keep your smartphone in close proximity (within 5m distance) when using it with the handle. Make sure the smartphone is safely positioned in a dry place.</li> <li>• The smartphone holder (j) (depending on model) can hold your smartphone while using. Before use, make sure your phone fits the stand and keeps stable.</li> </ul> <p>Note: Your smartphone must support <i>Bluetooth 4.0</i> (or higher)/<i>Bluetooth Smart</i> in order to pair your handle.</p> <p>Caution: Follow your smartphone's user manual to ensure your phone/charger is designed for use in a bathroom environment.</p>		
<b>R&amp;D</b> <b>+</b> <b>MKT</b>	<p><b>Cleaning recommendations</b></p> <p>After brushing, rinse your brush head under running water with the handle switched on. Switch off and remove the brush head. Clean handle and brush head separately; wipe them dry before reassembling. Unplug the charging unit before cleaning. Brush head compartment/protective cover (h), brush head holder (i) and smartphone holder (j) are dishwasher-safe. The charger (g) and travel case (k) should be cleaned with a damp cloth only (picture 7).</p>	<i>update</i>	
<b>R&amp;D</b>	Subject to change without notice.		
<b>R&amp;D</b> <b>+</b> <b>GPS</b>	<p><b>Environmental Notice</b></p> <p>Product contains batteries and/or recyclable electric waste. For environment protection do not dispose in household waste, but for recycling take to electric waste collection points provided in your country</p> 	<i>- adding Li-Ion symbol</i>	
	<p><b>Battery removal at the end of the product's useful life</b></p> <p>Do not disassemble the product except when disposing of the battery. Run down battery before removing. When taking out the battery for disposal, use protective clothing (gloves, safety glasses, etc.) to omit skin contact whilst leaking batteries. Use caution not to short the positive (+) and negative (–) terminals. Insulate terminals (e.g. with tape) and put the battery in a plastic bag for disposal.</p>	<i>update</i>	



Open the handle as shown, remove the battery and dispose of it according to local environmental regulations.  
**Caution! Opening the handle will destroy the appliance and invalidate the warranty.**

**Copy elements: WARRANTY + DISCLAIMER**

**Legal + MKT** Information  
**Bluetooth® radio module**  
 Although all indicated functions on the Bluetooth device are supported, Oral-B does not ensure 100% reliability in connection, and feature operation consistency.  
 Operation performance and connection reliability are direct consequences of each individual Bluetooth device, software version, as well as the operating system of those *Bluetooth* devices and company security regulations implemented on the device.

	<p>Oral-B adheres to and strictly implements the <i>Bluetooth</i> standard by which <i>Bluetooth</i> devices can communicate and function in Oral-B toothbrushes.</p> <p>However, if device manufacturers fail to implement this standard, <i>Bluetooth</i> compatibility and features will be further compromised and the user may experience functional and feature-related issues. Please note that the software on the <i>Bluetooth</i> device can significantly affect compatibility and operation.</p>		
<p><b>Legal</b> <b>+</b> <b>MKT</b></p>	<p><b>1) Warranty – Exclusions and Limitations</b></p> <p>This limited warranty applies only to the new products manufactured by or for The Procter &amp; Gamble Company, its Affiliates or Subsidiaries (“P&amp;G”) that can be identified by the Braun / Oral-B trademark, trade name, or logo affixed thereto. This limited warranty does not apply to any non-P&amp;G product including hardware and software. P&amp;G is not liable for any damage to or loss of any programs, data, or other information stored on any media contained within the product, or any non-P&amp;G product or part not covered by this limited warranty. Recovery or reinstallation of programs, data or other information is not covered under this limited warranty.</p> <p>This limited warranty does not apply to (i) damage caused by accident, abuse, misuse, neglect, misapplication, or non-P&amp;G product; (ii) damage caused by service performed by anyone other than Braun or authorized Braun service location; (iii) a product or part that has been modified without the written permission of P&amp;G, and (iv) damage arising out of the use of or inability to use the Oral-B Smartphone stand/puck, Smartphone mirror holder, or charging travel case (“Accessories”).</p> <p><b>2) Using your smartphone holder</b></p> <p>The Oral-B Accessories included in the package has been designed to provide you with a convenient way to position your smartphone while you are using the Oral-B app. Try multiple orientations of your smartphone in the Oral-B smartphone holder prior to use to determine the best positioning of your</p>		

	<p>smartphone in the holder. Be sure to try this in a manner which will not harm your smartphone if it falls out of the stand. Do not use in automobiles.</p> <p><b>LIMITATION OF LIABILITY</b></p> <p>TO THE EXTENT PERMITTED BY APPLICABLE LAW, IN NO EVENT SHALL P&amp;G ITS DISTRIBUTORS OR SUPPLIERS BE LIABLE TO YOU OR ANY THIRD PARTY FOR ANY DIRECT, INDIRECT, INCIDENTAL, CONSEQUENTIAL, SPECIAL, EXEMPLARY OR PUNITIVE DAMAGES, OF ANY NATURE WHATSOEVER, ARISING OUT OF THE USE OF OR INABILITY TO USE THE ORAL-B ACCESSORIES, INCLUDING, WITHOUT LIMITATION, INJURY TO PERSONS, PROPERTY DAMAGE, LOSS OF VALUE OF ANY THIRD PARTY PRODUCTS THAT ARE USED IN OR WITH THE ORAL-B ACCESSORIES, OR LOSS OF USE OF THE ORAL-B ACCESSORIES OR ANY THIRD PARTY PRODUCTS THAT ARE USED IN OR WITH THE ORAL-B ACCESSORIES, EVEN IF P&amp;G HAS BEEN ADVISED OF THE POSSIBILITY OF SUCH DAMAGES. WITHOUT LIMITING THE FOREGOING, YOU UNDERSTAND AND AGREE THAT P&amp;G HAS NO LIABILITY FOR ANY DAMAGE OR DESTRUCTION TO CONSUMER ELECTRONICS DEVICES OR OTHER PERSONAL PROPERTY THAT ARE CONTAINED ON OR EXTERIOR TO THE ORAL-B ACCESSORIES, OR ANY LOSS OF DATA CONTAINED IN THE FOREGOING DEVICES. IN NO EVENT SHALL ANY RECOVERY AGAINST ORAL-B EXCEED THE ACTUAL PRICE PAID FOR THE PURCHASE OF THE PRODUCT.</p>		
<p><b>Legal</b> <b>+</b> <b>MKT</b></p>	<p><b>Warranty replacement brush heads</b></p> <p>Oral-B warranty will be voided if electric rechargeable handle damage is found to be attributed to the use of non-Oral-B replacement brush heads.</p> <p>Oral-B does not recommend the use of non-Oral-B replacement brush heads.</p> <ul style="list-style-type: none"> <li>• Oral-B has no control over the quality of non-Oral-B replacement brush heads. Therefore, we cannot ensure the cleaning performance of non-Oral-B replacement brush heads, as communicated with the electric rechargeable handle at time of initial purchase.</li> </ul>		

	<ul style="list-style-type: none"> <li>• Oral-B cannot ensure a good fit of non-Oral-B replacement brush heads.</li> <li>• Oral-B cannot predict the long-term effect of non-Oral-B replacement brush heads on handle wear.</li> </ul> <p>All Oral-B replacement brush heads carry the Oral-B logo and meet Oral-B's high quality standards. Oral-B does not sell replacement brush heads or handle parts under any other brand name.</p>		
MKT	<p><b>Satisfaction Guaranteed or Your Money Back!</b></p> <p>Try Oral-B for 60 days, starting from the day of purchase. If you are not 100% satisfied, receive a full refund via pre-paid card. No questions asked. Please return your product along with your name, address, contact phone number and the original cash register receipt indicating purchase price and date to the address below to receive a pre-paid card in the amount of your purchase (refunds in Canada include tax and Canada Post 1st class mail postage).</p> <p>U.S. only:  Oral-B 60 Day Satisfaction Guarantee  4608 Appliance Drive  Suite 2  Belcamp, MD 21017</p> <p>Canada only:  Attention: 60-Day Challenge  Braun MBG  PO Box 12060  Saint John, NB  E2L 5E7</p> <p>Your Oral-B toothbrush must be returned in its original packaging and be postmarked no later than 60 days after the date of purchase. Please allow 6–8 weeks for handling. In the U.S., the shipment cost to return the product is the responsibility of the consumer.</p>		

Sorry: No refunds will be made for any Oral-B product damaged by accident, neglect, unreasonable use or lost in the post.

Terms and conditions apply. For further details please contact our customer service.

**Copy elements: TROUBLE SHOOTING**

R&D	Trouble Shooting			Update
	Problem	Possible reason	Remedy	
	<b>APP</b>			
	Handle does not operate (properly) with Oral-B™ App.	1. Oral-B™ App is turned off. 2. <i>Bluetooth</i> interface is not activated on smartphone. 3. Radio transmission is deactivated on handle. 4. <i>Bluetooth</i> connection to smartphone has been lost. 5. Your smartphone does not support <i>Bluetooth 4.0 (or higher)/Bluetooth Smart</i> . 6. Handle on plugged-in charger.	1. Turn on Oral-B™ App. 2. Activate <i>Bluetooth</i> interface on smartphone (described in its user manual). 3. Activate radio transmission by pressing on/off (c) for 3 seconds. 4. Briefly turn your toothbrush on and off (c) to re-connect or pair handle and smartphone again via app settings. Keep your smartphone in close proximity when using it with handle. 5. Your smartphone must support <i>Bluetooth 4.0 (or higher)/Bluetooth Smart</i> in	



		order to pair handle. 6. Radio transmission is deactivated while handle is placed on plugged-in charger.	
Reset to factory settings.	Original app functionality wanted.	Press and hold on/off button (c) for 10 seconds until all lights (b, e & f) double blink simultaneously. Note: radio transmission may be (de)activated while resetting. After reset radio transmission is re-activated.	
<b>TOOTHBRUSH</b>			
Handle is not operating (during first use).	Battery has a very low charge level; no light illuminates.	Charge at least for 30 min.	
Handle does not operate with existing SmartGuide in household.	1. Synchronizing with existing SmartGuide failed. 2. Radio transmission is deactivated; all indicator lights (b, e, f) flash simultaneously. 3. SmartGuide is not compatible with handle.	1. Synchronize (existing) handle(s) (again) via SmartGuide settings in SmartGuide's battery compartment: Press «h/min» for 3 seconds. Turn on handle that you want to synchronize. Then	

	4. Two handles are already assigned to SmartGuide.	<p>turn on second handle you want to synchronize. Press «h/min» or «set» to exit synchronization mode.</p> <p>2. Activate radio transmission when your toothbrush is turned off by pressing on/off (c) for 3 seconds until all indicator lights (b, e &amp; f) blink simultaneously.</p> <p>3. Handle cannot be used with existing SmartGuide.</p> <p>4. You can synchronize a total of 2 handles only. Change handles via SmartGuide settings (see 1.)</p>		
Handle does not operate any timer.	Timer has been modified/deactivated via app.	Use app to change timer settings or perform factory reset (see App Trouble Shootings).		
Handle does not charge but charger indicator lights flash alternating.	Ambient temperature for charging is out of valid range ( $\leq 0^{\circ}\text{C}$ and $\geq 60^{\circ}\text{C}$ ).	Recommended ambient temperature for charging is $5^{\circ}\text{C}$ to $35^{\circ}\text{C}$ .		

MKT + R&D + Legal	<p><b>FOR USA ONLY</b></p> <p><b>Limited 2-Year Warranty</b></p> <p>Oral-B warrants this appliance to be free of defects in material and workmanship for a period of two years from the date of original purchase at retail. If the appliance exhibits such a defect, Oral-B will, at its option, repair or replace it without cost for parts and labor. The product must be carried in or shipped, prepaid and insured (recommended), to an authorized Oral-B Service Center. Proof of date of original purchase is required. The cost to ship the product to an authorized Service Center is the responsibility of the consumer, the cost to return the product to the consumer is the responsibility of Oral-B. This warranty does not cover finishes or normal wear, nor does it cover damage resulting from accident, misuse, dirt, water, tampering, unreasonable use, service performed or attempted by unauthorized service agencies, failure to provide reasonable and necessary maintenance, including recharging, or units that have been modified or used for commercial purposes.</p> <p>This appliance is equipped with a Bluetooth Smart approved radio module. Failure to establish a Bluetooth Smart connection to specific smart phones is not covered under the device guarantee, unless the Bluetooth radio module of this appliance is damaged. The Bluetooth devices are warranted by their own manufacturers and not by Oral-B. Oral-B does not influence or make any recommendations to device manufacturers, and</p>		

therefore Oral-B does not assume any responsibility for the number of compatible devices with our Bluetooth systems. Oral-B reserves the right, without any prior notice, to make any technical modifications or changes to system implementation of device features, interface, and menu structure changes that are deemed necessary to ensure that Oral-B systems function reliably.

ALL IMPLIED WARRANTIES, INCLUDING ANY IMPLIED WARRANTY OF MERCHANTABILITY OR FITNESS FOR ANY PARTICULAR PURPOSE, ARE LIMITED IN DURATION TO TWO YEARS FROM DATE OF ORIGINAL PURCHASE. IN NO EVENT WILL ORAL-B BE RESPONSIBLE FOR CONSEQUENTIAL DAMAGES RESULTING FROM THE USE OF THIS PRODUCT.

Some states do not allow the exclusion or limitation of incidental or consequential damages, so the above limitation may not apply to you. This warranty gives you specific legal rights, and you may have other legal rights which vary from state to state.

How to obtain service in the USA Should this product require service, please call 1-800-566-7252 to be referred to the authorized Oral-B Service Center closest to you.

*To obtain service:*

A. Carry the product in to the authorized Oral-B Service Center of your choice or,

B. Ship the product to the authorized Oral-B Service Center of your choice. Pack the product well.

Ship the product prepaid and insured (recommended). Include a copy of your proof of purchase to verify warranty coverage, if applicable.

*To obtain original Oral-B replacement parts and accessories:*

Contact an authorized Oral-B Service Center.

Please call 1-800-566-7252 to be referred to the authorized Oral-B Service Center closest to you.

	<p><i>To order original Oral-B replacement parts and accessories (including replacement brush heads) by phone: Please call 1-800-566-7252.</i></p> <p><i>To speak to an Oral-B Consumer Service Representative: Please call 1-800-566-7252.</i></p>		
<p><b>GPS</b></p>	<p><b>FCC Compliance Statement</b></p> <p>This device complies with Part 15 of the FCC rules. Operation is subject to the following two conditions: (1) this device may not cause harmful interference, and (2) this device must accept any interference received, including interference that may cause undesired operation.</p> <p>Section 15.21 Information to user: Changes or modifications not expressly approved by the party responsible for compliance could void the user’s authority to operate the equipment.</p> <p>Section 15.105 (b) Note: This equipment has been tested and found to comply with the Limits for a Class B digital device, pursuant to Part 15 of the FCC Rules. These limits are designed to provide reasonable protection against harmful interference in a residential installation. This equipment generates, uses and can radiate radio frequency energy and, if not installed and used in accordance with the instructions, may cause harmful interference to radio communications. However, there is no guarantee that interference will not occur in a particular installation. If this equipment does cause harmful interference to radio or television reception, which can be determined by turning the equipment off and on, the user is encouraged to try to correct the interference by one or more of the following measures:</p> <ul style="list-style-type: none"> <li>– Reorient or relocate the receiving antenna.</li> <li>– Increase the separation between the equipment and receiver.</li> <li>– Connect the equipment into an outlet on a circuit different from that to which the receiver is connected.</li> </ul>		

	<p>– Consult the dealer or an experienced radio/TV technician for help.</p>		
<p><b>MKT</b> <b>+</b> <b>R&amp;D</b> <b>+</b> <b>Legal</b></p>	<p><b>FOR CANADA ONLY</b> <b>Limited 2-Year Warranty</b></p> <p>In the event this appliance fails to function within the specified warranty period because of defects in material or workmanship, and the consumer returns the unit to an authorized service center, Braun Canada will, at its option either repair or replace the unit without additional charge to the consumer. This warranty does not cover any product which has been damaged by dropping, tampering, servicing performed or attempted by unauthorized service agencies, misuse or abuse. This warranty excludes units which have been modified or used for commercial purposes.</p> <p>This appliance is equipped with a Bluetooth Smart approved radio module. Failure to establish a Bluetooth Smart connection to specific smart phones is not covered under the device guarantee, unless the Bluetooth radio module of this appliance is damaged. The Bluetooth devices are warranted by their own manufacturers and not by Oral-B. Oral-B does not influence or make any recommendations to device manufacturers, and therefore Oral-B does not assume any responsibility for the number of compatible devices with our Bluetooth systems. Oral-B reserves the right, without any prior notice, to make any technical modifications or changes to system implementation of device features, interface, and menu structure changes that are deemed necessary to ensure that Oral-B systems function reliably.</p> <p>To the extent allowed by law, Braun Canada shall not be responsible for loss of the product, loss of time, inconvenience, commercial loss, special or consequential damages. The provisions of this warranty are in addition to and not a modification of or subtraction from the statutory warranties and other rights and remedies contained in applicable provincial legislation.</p>		

	<p>How to obtain service in Canada Should this product require service, please call 1-800-566-7252 to be referred to the authorized Oral-B Service Center closest to you. To obtain service: A. Carry the product in to the authorized Oral-B Service Center of your choice or, B. Ship the product to the authorized Oral-B Service Center of your choice. Pack the product well. Ship the product prepaid and insured (recommended). Include a copy of your proof of purchase to verify warranty coverage, if applicable.</p> <p>To obtain original Oral-B replacement parts &amp; accessories: Contact an authorized Oral-B Service Center. Please call 1-800-566-7252 to be referred to the authorized Oral-B Service Center closest to you.</p> <p>To speak to an Oral-B Service Representative: Please call 1-800-566-7252.</p>		
<b>GPS</b>	<p><b>IC Compliance Notice</b> This device complies with Industry Canada licence-exempt RSS standard(s). Operation is subject to the following two conditions: (1) this device may not cause interference, and (2) this device must accept any interference, including interference that may cause undesired operation of the device.</p> <p>This Class B digital apparatus complies with Canadian ICES-003.</p>		