

WIRELESS LAN PCMCIA ADAPTER USER'S MANUAL

Instruction Manual

Federal Communication Commission Interference Statement

This equipment has been tested and found to comply with the limits for a Class B digital device, pursuant to Part 15 of the FCC Rules. These limits are designed to provide reasonable protection against harmful interference in a residential installation. This equipment generates, uses and can radiate radio frequency energy and, if not installed and used in accordance with the instructions, may cause harmful interference to radio communications. However, there is no guarantee that interference will not occur in a particular installation. If this equipment does cause harmful interference to radio or television reception, which can be determined by turning the equipment off and on, the user is encouraged to try to correct the interference by one of the following measures:

- Reorient or relocate the receiving antenna.
- Increase the separation between the equipment and receiver.
- Connect the equipment into an outlet on a circuit different from that to which the receiver is connected.
- Consult the dealer or an experienced radio/TV technician for help.

FCC Caution: To assure continued compliance, (example - use only shielded interface cables when connecting to computer or peripheral devices). Any changes or modifications not expressly approved by the party responsible for compliance could void the user's authority to operate this equipment.

CONTENTS

(1) WIRELESS LAN PCMCIA ADAPTER SETUP	1
(2) NETWORK SETUP	5

1 WIRELESS LAN PCMCIA ADAPTER SETUP

STEP 1-1

Turn your Notebook PC on and boot it under Windows98.

Insert Wireless LAN PCMCIA Adapter, Windows98 will recognize the card that has been inserted automatically.

It then display a dialog box “Update Device Driver Wizard”, see Figure 1-1

After Figure 1-1 appeared, click “Next” .

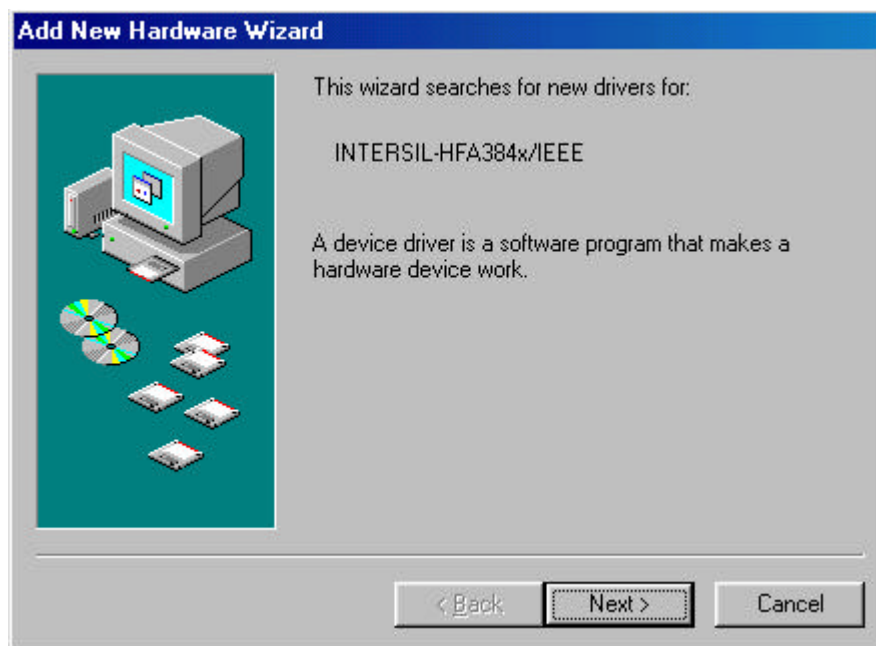


Figure 1-1

STEP 1-2

After you click “Next” , you will see Figure 1-2 displayed on screen.



Figure 1-2

Click “Next” .

STEP 1-3

Then you will see Figure 1-3 displayed on screen.

Insert the Driver disk into floppy driver A.

Type "a:\", choose "Specify a location", and click "OK". See Figure 1-3.



Figure 1-3

STEP 1-4

After you accomplish **STEP 1-3**, Figure 1-4 will be displayed on screen.



Figure 1-4

Click "Finish", and you have finished setup Wireless LAN PCMCIA Adapter driver. See Figure 1-5.



Figure 1-5

2 NETWORK SETUP

Before setup the network adapter, be sure that a client is configured with at least the IPX/SPX protocol, NetBEUI and TCP/IP protocol.

STEP 2-1

After installing the adapter driver, verify your Windows98 Network setup via the “Network” icon in “Control Panel”.

STEP 2-2

Highlight the “PRISM1 802.11 PC Card Adapter” and click “Properties”. See Figure 2-1.

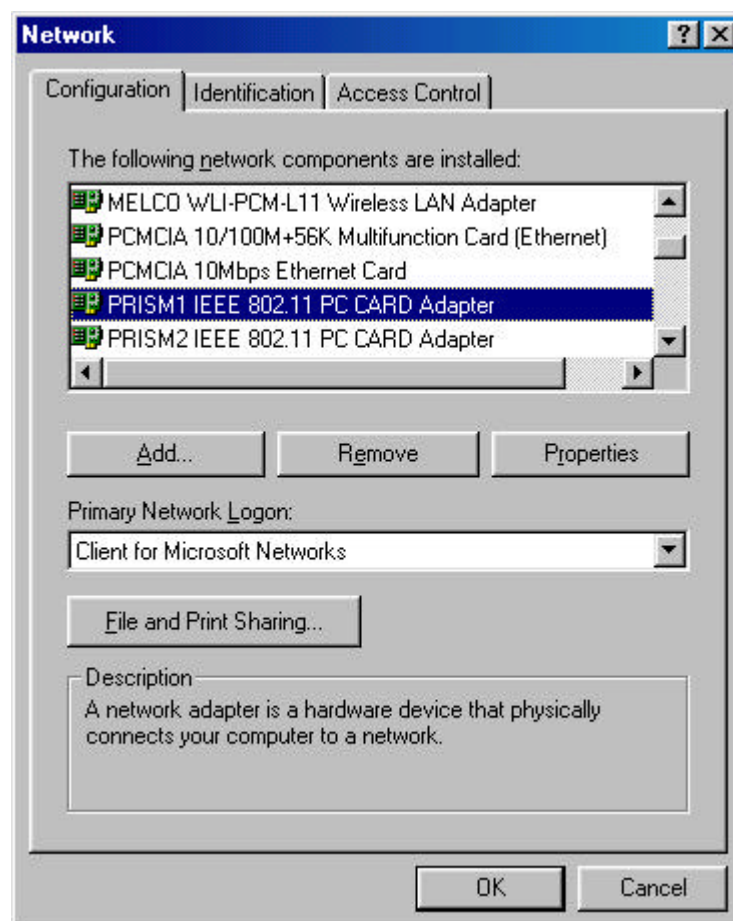


Figure 2-1

STEP 2-3

Click “Advanced” in PRISM1 802.11 PC Card Adapter Properties Panel.

Enable “SSID” Property, and let the Value be “IEEE 802.11 LAN” (default). See Figure 2-2.

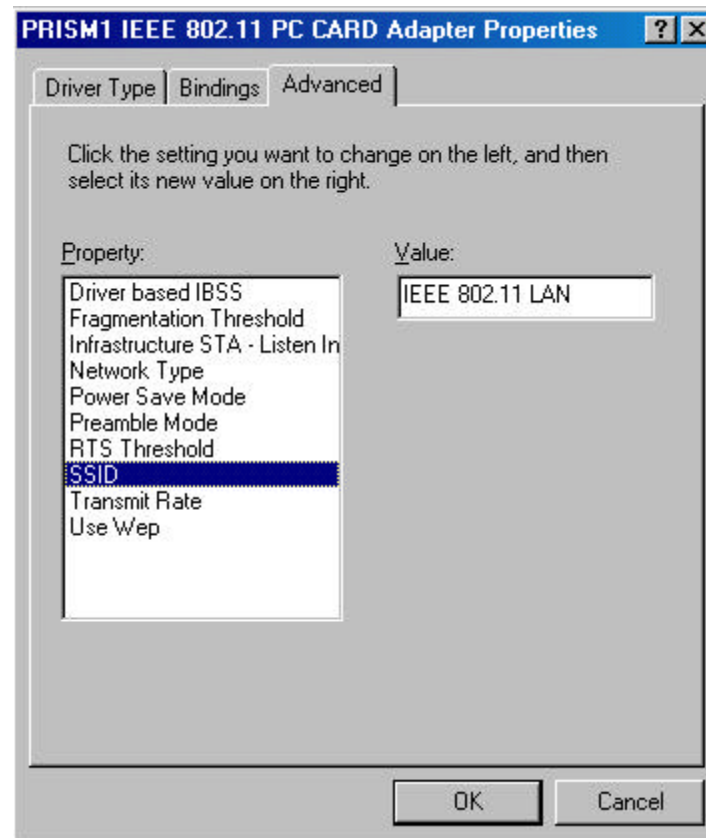


Figure 2-2

STEP 2-4

Enable “Network Mode” Property. See Figure 2-3.

Select “Adhoc” if you are in point-to-point configuration.

Select “Infrastructure” while you connect to LAN via Access Point.

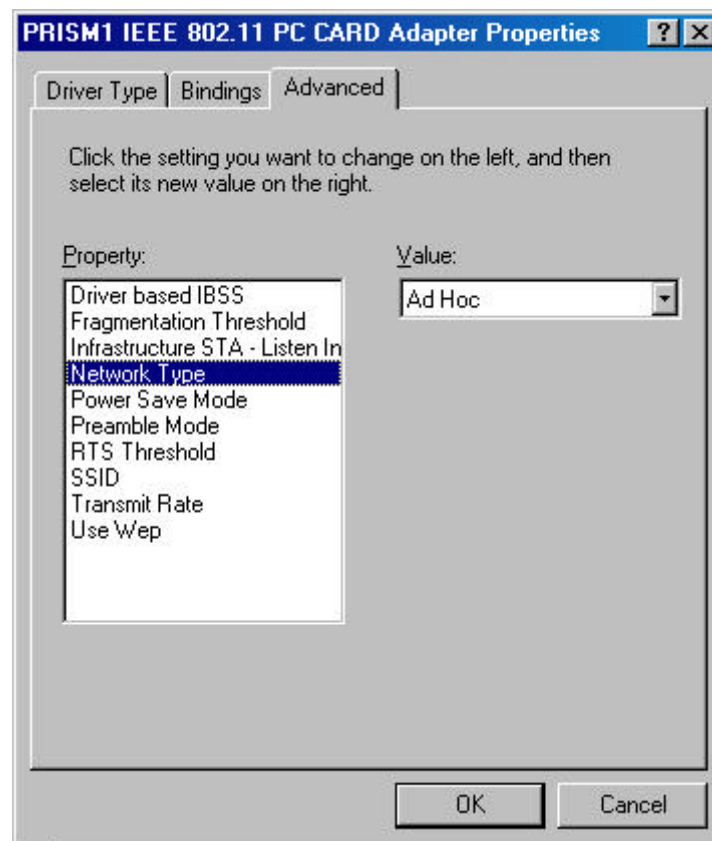


Figure 2-3

STEP 2-5

Enable “Infrastructure STA” Property. See Figure 2-4.

Select the proper channel number you are going to use to connect to LAN.

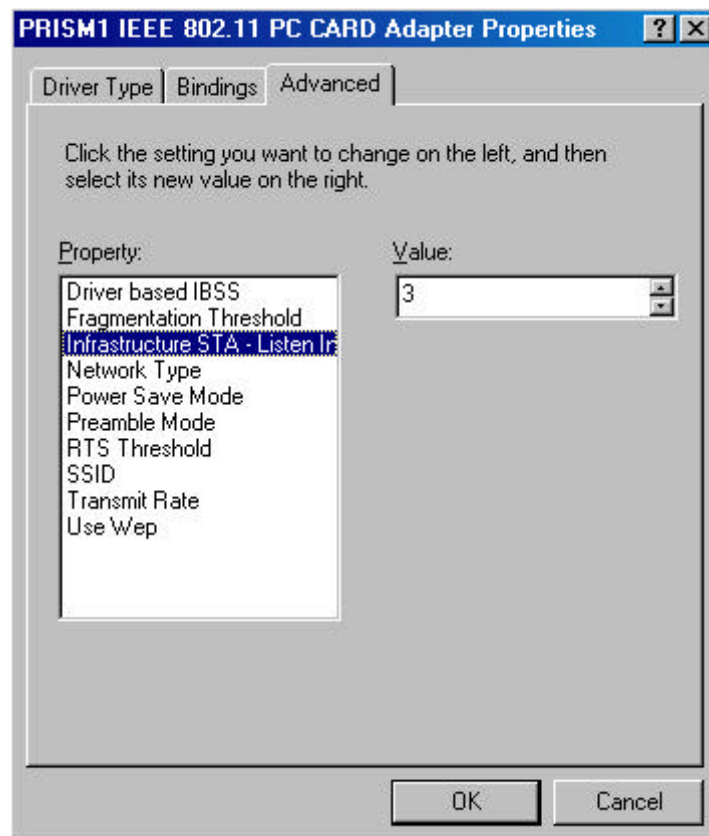


Figure 2-4