

User Guide

- 1 Getting Started
- 2 Using the Computer
- 3 Settings and Upgrade
- 4 Troubleshooting
- 5 Appendix

Start ▶



Contents



Chapter 1. Getting Started

- 3 **Product Features**
- 4 **Tips**
- 5 **Before You Start**
- 8 **Safety Precautions**
- 20 **Proper Posture During Computer Use**
- 23 **Overview**
- 28 **Turning the Computer On and Off**



Chapter 2. Using the Computer

- 32 **Keyboard**
- 36 **Touchpad**
- 40 **External-type CD drive (To be purchased)**
- 42 **Multi Card Slot (Optional)**
- 45 **Connecting an External Display Device (Optional)**
- 47 **Connecting an External Digital Device**
- 48 **Adjusting the Volume**
- 52 **Wired Network**
- 56 **Wireless Network (Optional)**
- 59 **Sharing Content in a Home Network (Easy Content Share) (Optional)**



Chapter 3. Settings and Upgrade

- 66 **LCD Brightness Control**
- 68 **BIOS Setup**
- 71 **Setting a Boot Password**
- 74 **Changing the Boot Priority**
- 75 **Upgrading Memory**
- 77 **Battery**
- 83 **Using the Security Lock Port**



Chapter 4. Troubleshooting

- 85 **Computer Backup/Restoration**
(Samsung Recovery Solution /
For supported models only)
- 96 **Browse Q&A**
- 98 **Q & A**



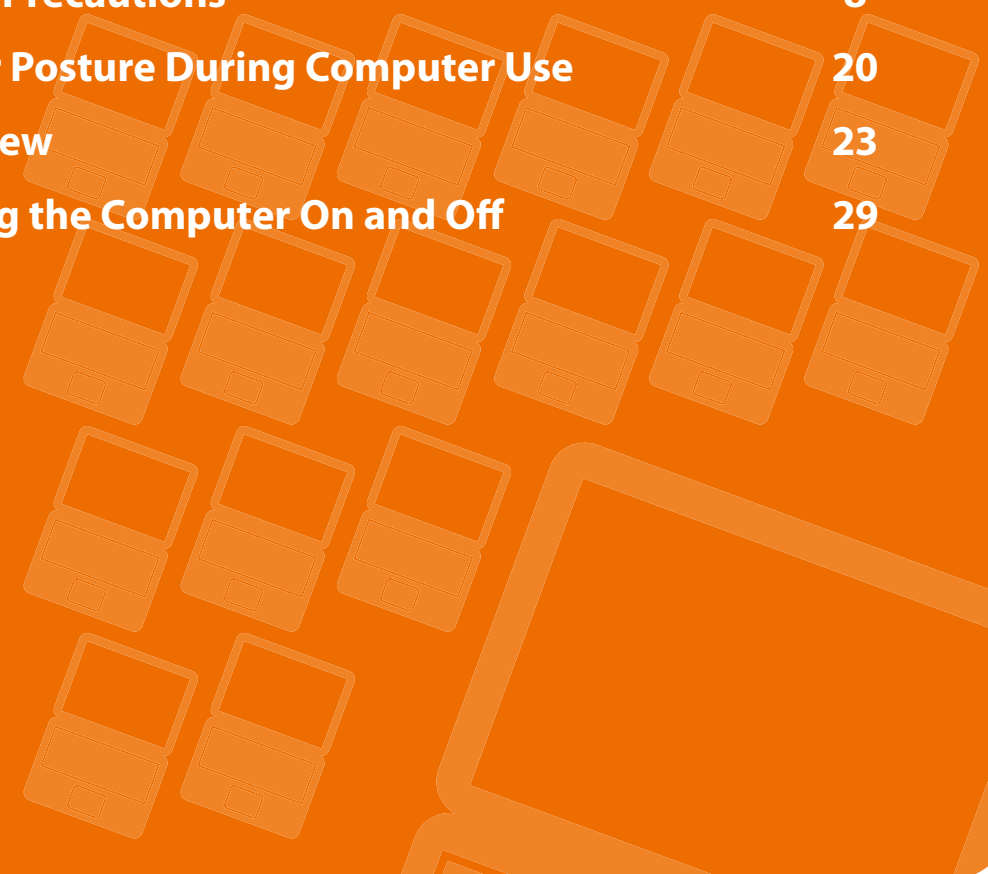
Chapter 5. Appendix

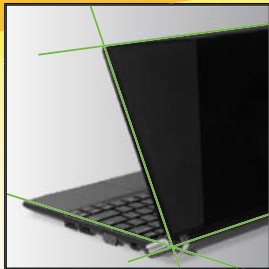
- 110 **Important Safety Information**
- 112 **Replacement Parts and Accessories**
- 114 **Regulatory Compliance Statements**
- 128 **WEEE SYMBOL INFORMATION**
- 129 **Product Specifications**
- 131 **Glossary**
- 135 **Index**



Chapter 1. Getting Started

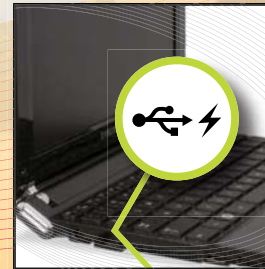
Product Features	3
Tips	4
Before You Start	5
Safety Precautions	8
Proper Posture During Computer Use	20
Overview	23
Turning the Computer On and Off	29





A mini notebook with excellent portability and usability

- The mini notebook that is so compact that it can be put into a handbag and easily used anywhere.



Chargeable USB port!

- You can charge your mobile phone, MP3 player, etc. any time through the chargeable USB connection (without the charger), if you have a USB chargeable cable. (Optional)
- You can charge a device even if the computer is turned off. (Optional)



Environmentally-Friendly Eco Design

- This is an environmentally friendly system designed in accordance with international environmental specifications regarding the use of environmentally friendly materials and the reduction of hazardous materials.
- The system ensures minimal noise by verifying the noise level on the basis of the noise levels of everyday life.



Samsung's Proprietary Software

- Using Easy Content Share, you can view video, music and photos from your PC on the TV. (Optional)
- Using Samsung Recovery Solution, you can resolve problems easily and quickly and restore the PC to the state when it was purchased. (Optional)



Optional items may be changed or may not be provided depending on the computer model.

Q

The computer is not turned on or does not respond and displays a blank screen.

A

Restore the computer using **Samsung Recovery Solution**.

1. Turn the computer on and press the **F4** key when the booting screen (SAMSUNG logo) appears.
2. The computer will boot up in restore mode after a short while and **Samsung Recovery Solution** appears.
3. When the start menu screen appears, click **Restore**.

Q

The keyboard Fn keys (shortcut keys) do not work.

A

Install **Easy Display Manager** and **Easy Speedup Manager**.

Q

I want to restore the computer to the state when it was purchased.

A

Click **Start > All Programs > Samsung > Samsung Recovery Solution > Samsung Recovery Solution**.

In the Recovery Solution screen, click **Restore > Complete Restore**.

Q

I want to connect an external monitor, TV or projector.

A

Connect the display device and the computer with the monitor and repeatedly press the **F4** key while holding down the **Fn** key.

Q

The internet connection has slowed down or error messages appear continuously while using the Internet.

A

Restore Internet Explorer to its initial state.

1. Launch **Internet Explorer**, click **Tools > Internet Options > Advanced > Load defaults**.
2. If the **Internet Explorer setting again** window appears, select **Set again**.
3. In the **Internet default setting restoration** window, select **Close**.

A

This is a compatibility problem between the Hancorn Office software and Internet Explorer. To resolve this problem, reinstall Internet Explorer 8 or install Internet Explorer 7 or earlier.

Q

How can I extend the battery usage time?

A

The battery usage time may be shortened if you recharge the battery before it is completely discharged.

To resolve this problem, enter the **BIOS Setup** and select **Battery Calibration** to discharge the battery completely and then recharge the battery.



For detailed information on a function, refer to the corresponding section of the User Manual.

Before reading the User Guide, first check the following information.



- Optional items, some devices and software referred to in the User Guide may not be provided and/or changed by upgrade.
Note that the computer environment referred in the User Guide may not be the same as your own environment.
- The pictures used for the cover and the main body in the User Manual are those of the representative model of each series and may differ from the actual appearance of the product.
- This guide describes procedures for using both the mouse and the touchpad.
- This manual has been written for the Windows operating system. The descriptions and figures may differ depending on the installed operating system.
- The User guide supplied with this computer may vary depending on your model.

Safety Precaution Notations

Icon	Notation	Description
	Warning	Failing to follow instructions marked with this symbol, may cause personal injury and or fatality.
	Caution	Failing to follow instructions marked with this symbol, may cause slight injury to yourself or damage your property.

Text Notations

Icon	Notation	Description
	Caution	Content included in this section includes information required about the function.
	Note	Content included in this section includes helpful information to use the function.

Copyright

© 2010 Samsung Electronics Co., Ltd.

Samsung Electronics Co., Ltd. owns the copyright of this manual.

No part of this manual may be reproduced or transmitted in any form or by any means, electronic or mechanical, without the consent of Samsung Electronics Co., Ltd.

The information in this document is subject to change without notice due to improving the performance of the product.

Samsung Electronics shall not be liable for any data loss. Please take care to avoid losing any important data and backup your data to prevent any such data loss.

Precautions for Operating System Support

If a problem occurs because of the reinstallation of other operating systems(OS) or a previous version of a OS pre-installed on this computer, or a software that does not support the OS, the company will not provide technical support, a replacement or refund, and if our service engineer visits you due to this problem, a service charge will be applied.

Performance Restrictions

- 1 Online games and some games(3D,2D) may not be supported and Full HD video and some high bit rate HD video playback may be slow and stutter on this computer.
- 2 There is one memory slot provided on this computer. It supports 2GB memory max. To upgrade to 2GB memory, replace the current memory with a 2GB memory module.

About the Product Capacity Representation Standard

About HDD Capacity Representation

The capacity of the storage device (HDD, SSD) of the manufacturer is calculated assuming that 1KB=1,000 Bytes.

However, the operating system (Windows) calculates the storage device capacity assuming that 1KB=1,024 Bytes, and therefore the capacity representation of the HDD in Windows is smaller than the actual capacity due to the difference in capacity calculation.

(E.g. For a 80GB HDD, Windows represents the capacity as 74.5GB, $80 \times 1,000 \times 1,000 \times 1,000 \text{ byte} / (1,024 \times 1,024 \times 1,024) \text{ byte} = 74.505 \text{ GB}$)

In addition, the capacity representation in Windows may be even smaller because some programs such as Recovery Solution may reside in a hidden area of the HDD.

About Memory Capacity Representation

The memory capacity reported in Windows is less than the actual capacity of memory.

This is because BIOS or a video adapter uses a portion of memory or claims it for further use.

(E.g. For 1GB(=1,024MB) memory installed, Windows may report the capacity as 1,022MB or less)

For more information, refer to the Samsung Recovery Solution section.

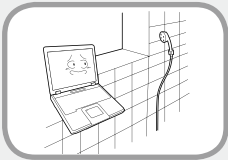
For your security and to prevent damage, please read the following safety instructions carefully.

Since this is commonly applied to Samsung Computers, some pictures may differ from actual products.

Warning

Failing to follow instructions marked with this symbol may cause personal injury and even fatality.

Installation Related



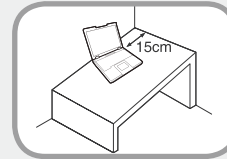
Do not install the product in places exposed to humidity such as a bathrooms.

There is a danger of electric shock. Use the product within the operating conditions specified in the Manufacturers User Guide.



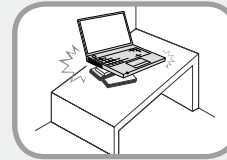
Keep the plastic bags out of the reach of children.

There is a danger of suffocation.



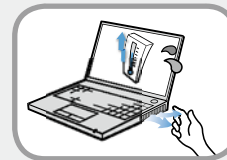
Keep a distance of 15cm or more between the computer and the wall and do not place any objects between them.

This may increase the internal temperature of the computer and may cause an injury.



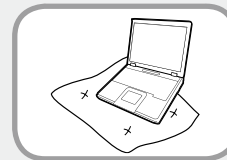
Do not install the computer on a slant or a place prone to vibrations, or avoid using the computer in that location for a long time.

This increases the risk that a malfunction or damage to the product will occur.



Avoid exposing any part of your body to the heat from the computer vent or AC adapter for a long time when the computer is on.

Exposing a part of your body close to the heat from the vent or AC adapter for long periods of time may cause a burn.




Avoid blocking the vent at the bottom or side of the computer when using it on a bed or cushion.

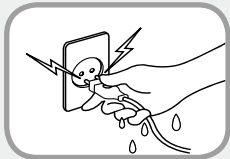
If the vent is blocked, there is a danger of damaging the computer or overheating the inside of the computer.

Warning

Failing to follow instructions marked with this symbol may cause personal injury and even fatality.

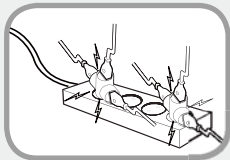
Power Related

 The power plug and wall outlet figures may differ depending on the country specifications and the product model.



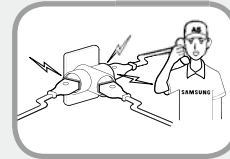
Do not touch the main plug or power cord with wet hands.

There is a danger of electric shock.



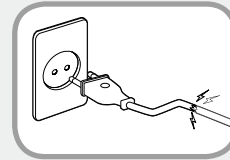
Do not exceed the standard capacity (voltage/current) of a multiplug or power outlet extension when using it for the product.

There is a danger of electric shock or fire hazard.



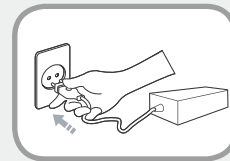
If the power cord or power outlet makes a noise, disconnect the power cord from the wall outlet and contact a service center.

There is a danger of electric shock or fire hazard.



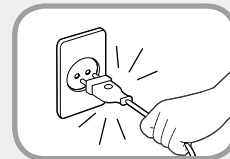
Do not use a damaged or loose main plug or power cord or power outlet.

There is a danger of electric shock or fire hazard.



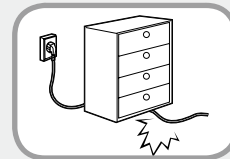
Plug the power cord firmly into the power outlet and AC adapter.

Failing to do so may cause fire hazard.



Do not unplug the power cord out by pulling the cable only.

If the cord is damaged, it may cause electric shock.

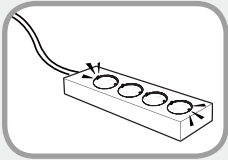


Do not bend the power cord excessively or do not place a heavy object over the power cord. It is especially important to keep the power cord out of reach of infants and pets.

If the cord is damaged, it may cause electric shock or fire.

Warning

Failing to follow instructions marked with this symbol may cause personal injury and even fatality.



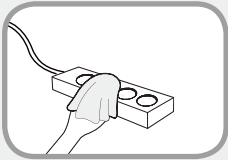
Connect the power cord to an outlet or multiple power plug (extended cable) with a ground terminal.

Failing to do so may result in electric shock.



If water or another substance enters the power input jack, AC adapter or the computer, disconnect the power cord and contact the service center.

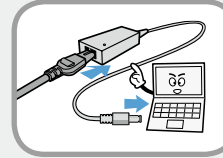
Damage to the device within the computer may cause electric shock or fire hazard.



Keep the power cord or outlet clean so that they are not covered with dust.

Failing to do so may result in fire.

AC Adapter Usage Precautions

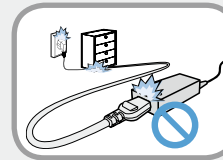


Connect the power cord to the AC adapter firmly.

Otherwise, there is a danger of fire due to an incomplete contact.

Use only the AC adapter supplied with the product.

Using another adapter may cause the screen to flicker.




Do not place heavy objects or step onto the power cord or AC adapter to avoid damaging the power cord or AC adapter.

If the cord is damaged, there is a danger of electric shock or fire.

Warning

Failing to follow instructions marked with this symbol may cause personal injury and even fatality.

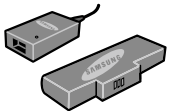
Battery Usage Related

 Please charge the battery fully before using the computer for the first time.



Keep the battery out of the reach of infants and pets, as they could put the battery into their mouths.

There is a danger of electric shock or choking.



Use an authorized battery and AC adapter only.

Please use an authorized battery and adapter approved by Samsung Electronics.

Unauthorized batteries and adapters may not meet the proper safety requirements and may cause problems or malfunctions and result in an explosion or fire.



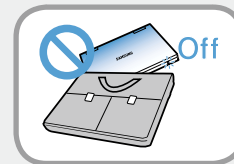
Do not use the computer in a badly ventilated location such as on bedding, on a pillow or cushion, etc, and do not use it in a location such as room with floor heating as it may cause the computer to overheat.

Take care that the computer vents (on the side or the bottom) are not blocked especially in these environments. If the vents are blocked, the computer may overheat and it may cause a computer problem, or even an explosion.



Do not use the computer in a humid location such as a bathroom or sauna.

Please use the computer within the recommended temperature and humidity range (10~32°C, 20~80% RH).

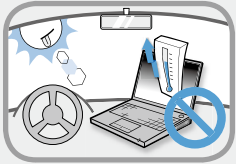


Do not close the LCD panel and put the computer into your bag to move it when it is still turned on.

If you put the computer into your bag without turning it off, the computer may overheat and there is a danger of fire. Shut the computer down properly before moving it.

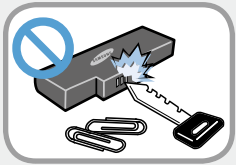
Warning

Failing to follow instructions marked with this symbol may cause personal injury and even fatality.



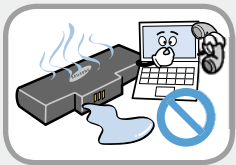
Never heat the battery or put the battery into a fire. Do not put or use the battery in a hot location such as a sauna, inside a vehicle exposed to the heat, and so on.

There is a danger of an explosion or fire.



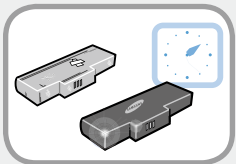
Take care not to allow metal objects such as a key or clip to touch the battery terminal (metal parts).

terminals, it may cause excessive current flow and it may damage the battery, or result in a fire.



If liquid leaks out of the battery or there is a funny smell coming from the battery, remove the battery from the computer and contact a service center.

There is a danger of an explosion or fire.



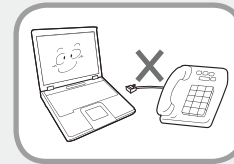
To use the computer safely, replace a dead battery with a new, authorized battery.

Usage Related



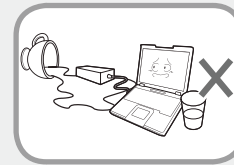
Disconnect all cables connected to the computer before cleaning it. If you are cleaning a notebook computer, remove the battery.

There is a danger of electric shock or damage to the product.



Do not connect a phone line connected to a digital phone to the modem.

There is a danger of a electric shock, fire or damage to the product.



Do not place any container filled with water or chemicals over or near the computer.

If water or chemicals enter the computer, this may cause fire or electric shock.

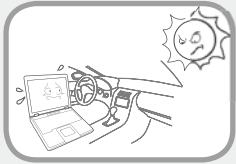


If the computer is broken or dropped, disconnect the power cord and contact a service center for a safety check.

Using a broken computer may cause electric shock or fire hazard.

Warning

Failing to follow instructions marked with this symbol may cause personal injury and even fatality.



Avoid direct sunlight when the computer is in an air-tight location such as inside a vehicle.

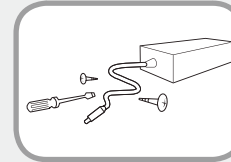
There is a danger of a fire hazard. The computer may overheat and also present opportunity to thieves.



Do not use your notebook PC for long periods of time while a part of your body is making direct contact with it. The temperature of the product may increase during normal operation.

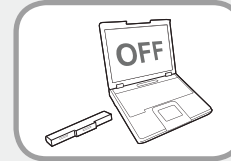
This may result in harming or burning your skin.

Upgrade Related



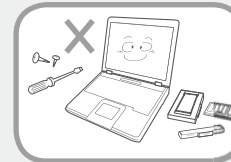
Never disassemble the power supply or AC adapter.

There is a danger of electric shock.



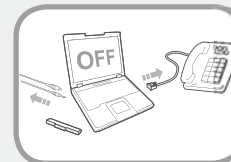
When removing the RTC (Real Time Clock) battery, keep it out of the reach of children as they could touch and/or swallow it.

There is a danger of choking. If a child has swallowed it, contact a doctor immediately.



Use only authorized parts (multi-plug, battery and memory) and never disassemble parts.

There is a danger of damaging the product, electric shock or fire hazard.



Shut down the computer and disconnect all cables before disassembling the computer. If there is a modem, disconnect the phone line. If you are disassembling notebook computer, make sure to remove the battery.

Failing to do so, may cause electric shock.

Warning

Failing to follow instructions marked with this symbol may cause personal injury and even fatality.

Custody and Movement Related

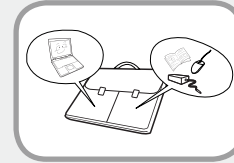


Follow the instructions for the relevant location (e.g. airplane, hospital, etc.) when using a wireless communication device (wireless LAN, Bluetooth, etc.).



Avoid exposing a drive to magnetic fields. Security devices with magnetic fields include airport walk-through devices and security wands.

The airport security devices that check carry-on luggage, such as conveyor belts, use x-rays instead of magnetism and will not damage a drive.



When carrying the notebook computer with other items, such as the adapter, mouse, books etc, take care not to press anything against the notebook computer.

If a heavy object is pressed against the notebook computer, a white spot or stain may appear on the LCD. Therefore, take care not to apply any pressure to the notebook.

In this case, place the notebook computer in a separate compartment away from the other objects.



Caution

Failing to follow instructions marked with this symbol may cause slight injury or damage to the product.

Installation Related

Do not block the ports (holes), vents, etc. of the product and do not insert objects.

Damage to a component within the computer may cause electric shock or fire.

When using the computer with it lying on its side, place it so that the vents face upwards.

Failing to do so, may cause the internal temperature of the computer to rise and the computer to malfunction or halt.

Do not place a heavy object over the product.

This may cause a problem with the computer. In addition, the object may fall and cause injury, or damage the computer.

Battery Usage Related

Dispose of worn-out batteries properly.

- There is a danger of fire or explosion.
- The battery disposal method may differ depending on your country and region. Dispose of the used battery in an appropriate way.

Do not throw or disassemble the battery and do not put it into water.

This may cause an injury, fire or explosion.

Use only a battery authorized by Samsung Electronics.

Failing to do so may cause an explosion.

Avoid contact with metal objects such as car keys or clips when keeping or carrying a battery.

Contact with a metal may cause excessive current and a high temperature and may damage the battery or cause a fire.

Charge the battery according to the instructions in the manual.

Failing to do so, may cause an explosion or fire from damage to the product.

Do not heat the battery or expose it to heat (e.g. inside a vehicle during the summer).

There is a danger of explosion or fire.



Caution

Failing to follow instructions marked with this symbol may cause slight injury or damage to the product.

Usage Related

Do not place a candle, light cigar, etc. over or on the product.

There is a danger of fire.

Use a wall outlet or multi-plug with a grounding part.

Failing to do so may cause electric shock hazard.

Make sure to have the product tested by a safety service engineer after repairing the product.

Authorized Samsung Repair Centers will carry out safety checks after a repair. Using a repaired product without testing it for safety may cause an electric shock or fire.

In case of lightning, immediately turn the system off, disconnect the power cord from the wall outlet and phone line from modem. Do not use a modem or phone.

There is a danger of electric shock or fire.

Do not use your computer and AC-Adapter on your lap or soft surfaces.

If the computer temperature increases, there is a danger of burning yourself.

Connect only permitted devices to the connectors or ports of the computer.

Failing to do so, may cause electric shock and fire.

Close the LCD panel only after checking if the notebook computer is turned off.

The temperature may rise and it may cause overheating and deformation of the product.

Do not press the Eject Button while the Floppy Disk/CD-ROM drive is in operation.

You might lose data and the disk might be suddenly ejected and could cause an injury.

Take care not to drop the product while using it.

This may cause personal injury or loss of data.

Do not touch the antenna with electricity facility such as the power outlet.

There is a danger of electric shock.

When handling computer parts, follow the instructions on the manual supplied with the parts.

Failing to do so, may cause damage to the product.



Caution

Failing to follow instructions marked with this symbol may cause slight injury or damage to the product.

If the computer emits smoke, or there is a burning smell, disconnect the power plug from the wall outlet and contact a service center. If your computer is a notebook computer, make sure to remove the battery.

There is a danger of fire.

Do not use a damaged or modified CD/Floppy Disk.

There is a danger of damaging the product or personal injury.

Do not insert your fingers into the PC Card Slot.

There is a danger of injury or electric shock.

Use recommended computer cleansing solution when cleaning the product and only use the computer when it is completely dried.

Failing to do so may cause electric shock or fire.

Emergency disk eject method using paperclip should not be used while the disk is in motion. Make sure to use the emergency disk eject method only when the Optical Disk Drive is stopped.

There is a danger of injury.

Do not place your face close to the Optical Disk Drive tray when it is operating.

There is a danger of injury due to an abrupt ejection.

Check CDs for cracks and damage prior to use.

It may damage the disc and cause disorder of device and injury of user.



Caution

Failing to follow instructions marked with this symbol may cause slight injury or damage to the product.

Upgrade Related

Take care when touching the product or parts.

The device may be damaged or you may be injured.

Take care not to throw or drop a computer part or device.

This may cause injury or damage to the product.

Make sure to close the computer cover before connecting the power after a reassembly.

There is a danger of electric shock if your body touches an internal part.

Use parts authorized by Samsung Electronics only.

Failing to do so, may cause fire or damage the product.

Never disassemble or repair the product by yourself.

There is a danger of electric shock or fire.

To connect a device that is not manufactured or authorized by Samsung Electronics, enquire at your service center before connecting the device.

There is a danger of damaging the product.

Custody and Movement Related

When moving the product, turn the power off and separate all connected cables first.

The product might be damaged or users may trip over the cables.

For long periods of not using the notebook computer, discharge the battery and preserve as it is detached.

The battery will be preserved at its best condition.

Do not operate or watch the computer while driving a vehicle.

There is a danger of a traffic accident. Please concentrate on driving.



Caution

Failing to follow instructions marked with this symbol may cause slight injury or damage to the product.

Cautions on Preventing Data Loss (Hard Disk Management)

Take care not to damage the data on a hard disk drive.

- A hard disk drive is so sensitive to external impact that an external impact may cause loss of data on the surface of the disk.
- Take extra care, because moving the computer or an impact on the computer when it is turned on may damage the data of the hard disk drive.
- The company is not liable for any loss of data on the hard disk drive.

Causes that may damage the data of a hard disk drive and the hard disk drive itself.

- The data may be lost when an external impact is applied to the disk while disassembling or assembling the computer.
- The data may be lost when the computer is turned off or reset by a power failure while the hard disk drive is operating.
- The data may be lost and irrecoverable due to a computer virus infection.
- The data may be lost if the power is turned off while running a program.
- Moving or causing an impact to the computer while the hard disk drive is operating, may cause files to be corrupted or bad sectors on the hard disk.

To prevent data loss due to damage to the hard disk drive, please backup your data frequently.

Maintaining a proper posture during computer use is very important to prevent physical harm.

The following instructions are about maintaining a proper posture during computer use developed through human engineering. Please read and follow them carefully when using the computer.

Otherwise, the probability of (RSI: Repetitive Strain Injury) from repeated operations may increase and serious physical harm may be caused.



- The instructions in this manual have been prepared so that they can be applied within the coverage of general users.
- If the user is not included in the coverage, the recommendation is to be applied according to the user's needs.

Proper Posture

Adjust the heights of desks and chairs appropriate to your height.

The heights are to be adjusted so that your arm forms a right angle when you place your hand over the keyboard while sitting down on a chair.

Adjust the height of chair so that your heel is comfortably placed on the floor.

- Do not use the computer while you are lying down, but only while you are sitting down.
- Do not use the computer on your lap. If the computer temperature increases, there is a danger of burning yourself.
- Work while keeping your waist straight.
- Use a chair with a comfortable back.
- Keep the center of your leg weight not on the chair but on your feet when you are sitting on a chair.
- To use the computer while talking over the telephone, use a headset. Using the computer with the phone on your shoulder is bad for posture.
- Keep frequently used items within a comfortable work range (where you can reach them with your hands).

