


How to use this manual

This document has been designed to provide you with complete product knowledge. You can resize the document window or print this document, access linked web sites and get information from specially prepared graphics.

- To jump to a linked topic or a web site, click the underlined blue text, or the hand symbol  whenever it appears.
- To show a short description (tooltip) of an object, move your mouse cursor over it. A tooltip appears after a few seconds.

You can choose to print portions of this document:

1. On the Contents tabbed page to your left, click a topic heading.
2. On the menu, click the Print button.
3. In the dialog box that appears, click the option to print one topic only, or all topics under a heading.

Introduction

Congratulations on purchasing Creative Live! Wireless. Your easy-to-install and simple-to-use Internet camera is the perfect solution for streaming video over a LAN or WAN network. Whether for remote monitoring, live image broadcasting or security surveillance, your Internet camera will provide high-quality, digital images to make your broadband experience a truly multimedia one.

Your Live! Wireless comes with the following software:

- Creative Internet Camera Center
- Creative Internet Camera Setup Wizard
- Creative Internet Camera Diagnostics

For more information, see [Creative Live! Wireless applications](#).

Package Contents

The package contains the following:

- Creative Wireless Server
- Creative WebCam Live! with USB cable attached
- Creative Live! Wireless Installation CD
- Ethernet network cable
- Wall mount bracket
- Power adapter
- Quick Start Guide

Note

- Contents may vary depending on product model and region of purchase.

README file

The README file on the CD-ROM contains late-breaking or other information that supplements the product documentation. Read the file before you begin installing your Internet camera.

Minimum System Requirements

- Intel® Pentium® III or AMD® (or equivalent) processor running at 700 MHz (Pentium 4 2 GHz recommended)
- Microsoft® Windows® XP, Windows 2000, Windows Millennium Edition (Me) or Windows 98 Second Edition (SE)
- Microsoft Internet Explorer or other standard web browser
- CD-ROM or DVD-ROM drive
- 128 MB RAM (256 MB recommended)
- Available Ethernet port, 802.11b or 802.11g wireless interface
- Router (wireless router recommended)



About Creative Live! Wireless

The sections below highlight the features of Creative Live! Wireless:

- [Wireless Server](#)
- [WebCam Live!](#)

Wireless Server



Component		Usage
1.	Power LED	Lights up when your Wireless Server is connected to a power source.
2.	LAN LED	Lights up when your Wireless Server is connected to a wired network, and blinks during data transfer
3.	USB 1 LED	Lights up when your webcam or USB Storage Device is connected to your USB 1 port.
4.	USB 2 LED	Lights up when your webcam or USB Storage Device is connected to your USB 2 port.
5.	Wireless LED	Lights up when your Wireless Server is connected to a wireless network, and blinks during data transfer. 
6.	Antenna	Transmits data wirelessly.
7.	Power connector	Connect the power adapter to this connector.
8.	USB 1 & USB 2 ports	Connect your webcam or USB Storage Device to either port.
9.	LAN port	Connect the supplied Ethernet network cable to this port.
10.	Reset button	Resets your Wireless Server to original factory settings. Press and hold the button using a thin object like a paper clip until all the LEDs start blinking. 

Warning!


- Resetting your Wireless Server will erase any settings assigned with Creative Internet Camera Setup Wizard. Do not reset your camera if you want to retain your settings.

Tip

- The USB ports on your Wireless Server can be used as a USB hub. You can connect a USB Storage Device, such as a Creative Zen Nano Plus player or a Creative MuVo[®] Micro N200 player, to an unused USB port.

WebCam Live!



	Component	Description
1.	Power LED	Lights up when your webcam is connected to your Wireless Server's USB port.
2.	Focus ring	Adjusts the view focus. Point the lens toward your subject and then rotate the ring clockwise or counterclockwise until the image is in focus.
3.	USB cable	Connect it to your Wireless Server's USB port. 

Installing Your Creative Live! Wireless

You need to install applications before using your Live! Wireless.

1. Insert the Installation CD into your CD-ROM drive. Your CD should start automatically. If it does not, follow the steps below:
 - i. Double-click the **My Computer** icon.
Alternatively, click **Start** → **My Computer**.
 - ii. Right-click the **CD-ROM/DVD-ROM drive** icon, and then click **AutoPlay**.
The **Software Installation Selection** dialog box appears.



2. Click the application(s) you want to install, and then click the **Install** button.
3. Follow the instructions on screen to complete the installation. You may be asked, after the drivers have been successfully installed, if you want to restart your computer. Select **No** until all of your selected applications are installed.
4. Restart your computer after all of your selected applications have been installed.

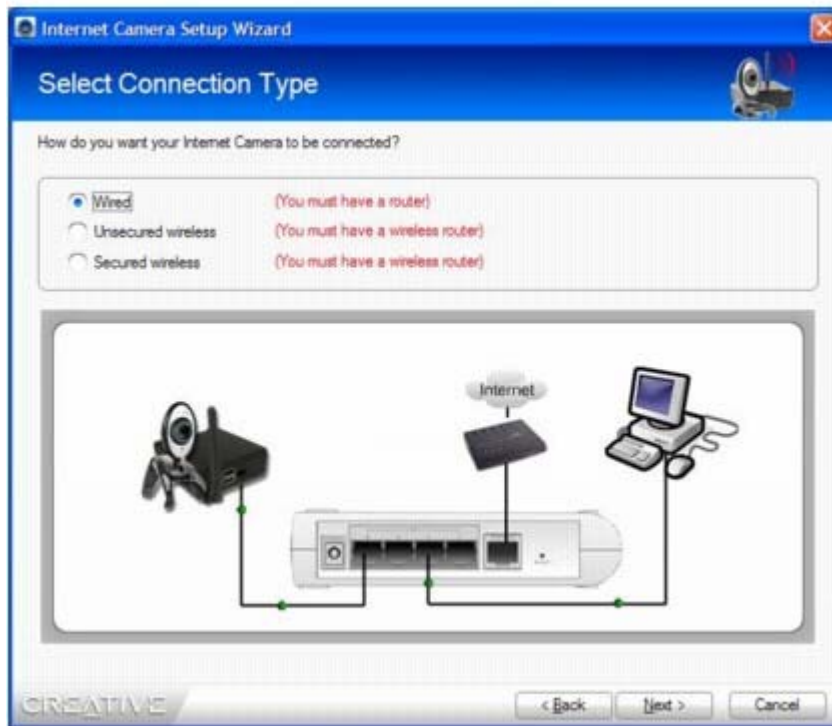
Setting up your Live! Wireless

Your Live! Wireless comes with an easy-to-use setup wizard that guides you through the setup process for a wired connection, a secured wireless connection, or an unsecured wireless connection. The wizard also guides you through setting up your Wireless Server so that you can view images and streaming video from a remote location.

1. If you chose to install the **Internet Camera Setup Wizard** application, the wizard launches after your computer has restarted.
Alternatively, double-click the **Internet Camera Setup Wizard** icon on your desktop.
The **Internet Camera Setup Wizard** dialog box appears.



2. Click the **Next** button.
The **Select Connection Type** dialog box appears.



3. Select from one of the following connection types:
 - **Wired**
Select this option if you access the Internet through a wired router instead of a wireless router.
 - **Secured wireless**
Select this option if you access the Internet through a wireless router with Wireless Equivalent Privacy (WEP) / Wi-Fi Protected Access-Pre-Shared Key (WPA-PSK) enabled.
 - **Unsecured wireless**
Select this option if you access the Internet through a wireless router that does not have WEP/WPA-PSK enabled, or that has DHCP enabled.
4. Connect your Wireless Server as shown in the dialog box, for your connection type.
5. Click the **Next** button.
A webcam dialog box appears.
6. You can change any of the following Internet camera parameters:
 - **Webcam Name** - You can monitor up to four Internet cameras. Rename each camera to identify its location or purpose to help you remember which camera you are monitoring at any given time.
 - **IP Address** - You can manually assign a static IP address for your Internet camera.
 - **Time Zone** - You can specify a time zone for each Internet camera. This is useful when you are monitoring different cameras in different time zones.
 - **Time** - You can choose between autosync and manual time input. Autosync matches the Internet camera time to your computer's system clock.
 - **Username and Password** - It is strongly recommended that you change the default username and password during initial setup.
7. Click the **Next** button to confirm any parameter changes that you have made.
The **Remote Access Setup** dialog box appears.

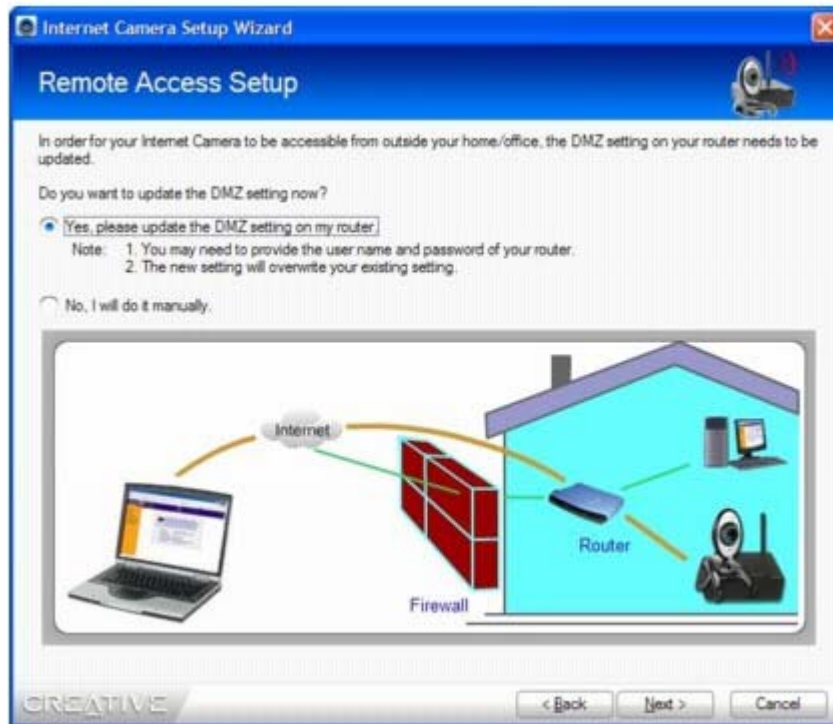


8. To test your Internet camera's video setup, click the **Show Video** button, and enter your **Username** and **Password**.
9. If you do not want to set up your Internet Camera for remote access, select the **No, I will set up Remote Access later** option, and then click the **Next** button. On the summary dialog box that appears, check that the information for your Internet Camera setup is correct, and then click the **Finish** button.
10. If you want to set up your Internet Camera for remote access, select the **Yes, I want to access my Internet Camera from the Internet** option and click the **Next** button. Proceed to set up remote access in [Setting up Remote Access](#).

Setting up Remote Access

In order to view or record video with your Internet Camera from a remote location over the Internet, you need to set up remote access. Make sure you are connected to the Internet before setting up remote access.

1. Complete the steps in [Setting up your Live! Wireless](#).
2. On the **Remote Access Setup** dialog box, select the **Yes, I want to access my Internet Camera from the Internet** option, and then click the **Next** button.



3. Select the **Yes, please update the DMZ setting on my router** option, and then click the **Next** button.
4. Select whether you want to create a Dynamic Domain Name Service (**DDNS**) account. A DDNS account allows you to access your Wireless Server by entering a URL in your web browser instead of an IP address.
5. Click the **Next** button. A summary dialog box appears.
6. Check that the information for your Internet camera remote access setup is correct, and then click the **Finish** button to complete the setup.

After your Internet Camera is set up, you can use the setup wizard again to set up a new Internet Camera, change Internet Camera settings, or set up remote access.

Note

- The setup wizard detects only one Internet Camera at a time. To set up more than one Internet Camera you need to run the Creative Internet Camera Setup Wizard again (see [Setting up your Live! Wireless](#)).
- The default username and password is **admin**. If you change your username and password, you will be prompted to enter them.
- The wizard restarts your Internet Camera for any new settings to take effect.

Creative Live! Wireless applications

The following applications are designed to help you access the full range of features available with your Internet camera.

For more information on each application, refer to its online help.

The Installation CD includes the following:

- [Creative Internet Camera Center](#)
- [Creative Live! Wireless web-based utility](#)
- [Creative Internet Camera Diagnostics](#)

Creative Internet Camera Center

With Creative Internet Camera Center you can monitor real-time based video from up to four Internet cameras. You can record your remote monitoring or surveillance sessions and store them in media folders on your local computer.

For additional information and usage instructions, see the application's Help.



Creative Live! Wireless web-based utility

Creative Live! Wireless web-based utility allows you to access your Internet cameras from a location outside the LAN. This web-based utility is available when you create a DDNS for your Internet camera. For more information on creating a DDNS, see [Setting up Remote Access](#).

To access your Internet camera's web-based utility:

1. Launch your browser.
2. In the **Address** box, type your Internet camera's IP address, or registered domain name if you are using remote access.
3. In the **Login** screen that appears, type in your **username** and **password** and click the **OK** button. Your Internet camera video appears.
4. To configure your Internet camera's settings, refer to instructions on the left pane of the configuration web page.

Note

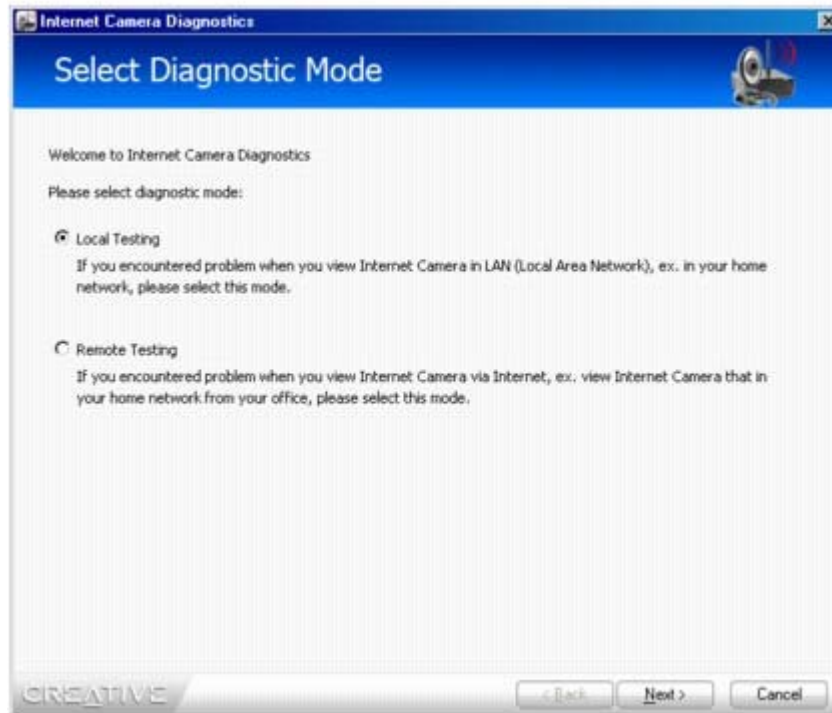
- Creative Live! Wireless web-based utility supports WAN monitoring on Mac[®] OS X 10.4, Mac OS 9.1, Red Hat[®] 9.0.
- If your Web browser does not support ActiveX components, you can monitor your Internet camera's activity using Creative Internet Camera Center.
- You can verify your Internet camera's IP address in the **Camera List** window of Creative Internet Camera Center.

Creative Internet Camera Diagnostics

This utility is a useful program for diagnosing and fixing any problems that you may have with your Internet camera. The utility helps you check that

- The hardware is detected
- The Wireless Server is properly connected to the Internet
- The LAN or WAN parameters are correct.

If the tests detect problems, the utility suggests solutions.



Frequently Asked Questions

This section covers questions you might have while using your camera. If you have more questions about this product, consult our online self-help tool. To access the **Knowledge Base**, go to www.creative.com, select your region and then select **Support**.

I have a modem at home, but do not have a switch or router. Can I configure and view my Internet camera via the Internet?

No, you need a router in order to configure and view your Internet camera via the Internet.

I want to move my Wireless Server to another monitoring location, how do I monitor my Internet camera's activity?

If you are moving to another location within the same network, you can still monitor your Wireless Server's activity using Creative Internet Camera Center.

If you are moving to a location with a different network, you need to reset your Internet camera and set it up at your new monitoring location (see [Setting up your Live! Wireless](#)).

Why can't I monitor or configure my Internet camera via the Internet through a router?

The firewall for your computer, ISP or corporate Internet server may be set to block the port used for webpage viewing or streaming. Try the following:

- If you are accessing your Internet camera within the LAN, configure your computer's firewall to include your Internet camera's port for video streaming.
- If you are accessing your Internet camera through the Internet, contact your ISP or administrator to include your Internet camera's port for webpage viewing or video streaming.
- Run the Creative Internet Camera Diagnostics to help diagnose the problem and find a solution.

I can't locate my Wireless Server from the LAN. What can I do?

Make sure that the power adapter is plugged in securely to both your Wireless Server and your router, and that the power is turned on. If the power to both is turned on, your computer's firewall settings may be blocking communication between your computer and your Wireless Server.

Where do I find my Wireless Server's IP address?

An IP address is assigned to your Wireless Server when you run the Creative Internet Camera Setup Wizard. Run the setup wizard again and check the IP address (see [Setting up your Live! Wireless](#)).

Why can't I access my Wireless Server from a remote location?

Your router's DMZ settings or your DDNS account may not be correctly configured. Try one of the following:

- Make sure that you enabled your router's DMZ option. For more information on your router's options, refer to the User's Guide for your router.
- Make sure that you correctly entered the IP address in the DMZ IP address field (see [Setting up Remote Access](#)).
- If this is correct, run the Creative Internet Camera Diagnostics to check whether the host name is valid or if the DDNS is down.

Can I stream video from more than one Internet camera using Creative Internet Camera Center?

Yes. You can stream video from up to four Internet cameras at the same time.

Will wireless autoscans detect my Wireless Server?

If your computer does not have wireless security set up, you can use the wireless autoscans feature to detect your Wireless Server. However, if you have several wireless access points near your Wireless Server, it could take up to five minutes to detect it.

Can I use my Wireless Server outdoors?

No. Your Wireless Server is not waterproof and is not designed for outdoor usage.

Can I connect a USB storage device to an unused USB port of the Wireless Server?

Yes, your Wireless Server can serve as a USB hub. You can connect a USB mass storage device with FAT or FAT32 file system.

Why isn't my USB storage device recognized when I connect it to the Wireless Server?

Your USB storage device should be recognized when you connect it to the Wireless Server. Make sure that your device is not locked.

Can I use the webcam provided for instant messaging on my computer?

Yes, you can use the webcam by installing the driver provided on the Installation CD. For more information on using your Creative WebCam Live! as a webcam, you can download the User's Guide from www.creative.com.

Hardware Features

Power source

- 5VDC 2.4A, power adapter for indoor use

Resolution

- Display resolution up to 640 x 480 pixels
- Frame rate up to 15 frames/sec.

Video formats

- Motion JPEG (MJPEG) for real-time view
- JPEG for interval view

Exposure control

- Automatic

White balance

- Automatic

Network interface

- One RJ-45, Ethernet 10/100 Mbps
- IEEE 802.11g wireless compatible with 802.11b/g AP

Antenna

- External single-pole antenna

LED

- Power
- LAN
- USB1
- USB 2
- Wireless

Operating conditions

- Temperature: 5-50°C (41-122°F)
- Humidity: 5-95%

Software Features

Network protocol

- TCP/IP, SMTP client, ARP, RTP, RTCP, RTSP, FTP, HTTP
- DHCP client, DDNS supported

Email notification

- SMTP email notification protocols supported
- Software-triggered event delivery supported
- User-configurable thresholds for number of e-mails sent and duration supported
- Up to 4 image attachments supported

Security

- User/password authentication for remote access
- Software-controlled video capture supported
- 802.11g WEP & WPA-PSK supported
- System event log
- Video motion detection supported
- Software-controlled motion detection supported

Local/Remote management

- Password authentication
- HTTP server using standard web browser interface
- Automatic or user controlled AP site survey and activation
- HTTP refresh for WAN access behind corporate firewall
- Local video transmission using RTP/RTSP/RTCP supported
- Monitoring through standard web browser with plug-in supported
- Multiple users with single camera in LAN supported
- Multiple camera monitoring in LAN supported
- DDNS naming conversion for DHCP broadband subscribers supported
- DHCP client supported
- System default recovery
- Firmware download/upgrade supported

General Safety

To avoid the risk of fire, electric shock or personal injury, note the following precautions when using the product:

- Do not expose the product to direct sunlight or excessive heat.
- Do not place the product in surroundings that exceed 40°C (104°F).
- Avoid humid conditions. Do not place the product near a water source or outlet.
- Do not clean the product with a damp cloth or liquid cleaner.
- Do not put any weight on the product.
- Allow only qualified personnel to service or repair the product, if such is necessary.

Exposure to Radio Frequency Caution

- The radiated output power of this device is far below the FCC radio frequency exposure limits. Nevertheless, the device shall be used in such a manner that the potential for human contact during normal operation is minimized.
- The product and any attached external antenna, if supported, shall be placed in such a manner to minimize the potential for human contact during normal operation.
- The indoor antenna must be totally isolated and does not have a line of sight to an external GPS antenna, to avoid feedback reflected RF signal.

Power Adapter Safety Notice

Power Source

This product is specially designed for operation within the electrical range(s) specified on the provided power adapter. Any usage outside of these ranges is at your own risk.

If you are not sure of the type of power supply to your home, consult your product dealer or local Power Company.

Cleaning

Unplug the product from the power source before cleaning. Do not use liquid or aerosol cleaners. Use a damp cloth for cleaning.

Damage Requiring Servicing

Unplug the power adapter from the wall outlet or other power source and refer servicing to qualified service personnel under the following conditions:

- when the power supply cord or plug is damaged;
- if liquid has been spilled, or objects have fallen into the product;
- if the product has been exposed to rain or water;
- if the product does not perform normally when following the operating instructions or exhibits a distinct change in performance;
- if the product has been dropped or damaged in any way.

Servicing

Do not attempt to service the product on your own. Refer all servicing to qualified service personnel.

Federal Communication Commission Interference Statement

This equipment has been tested and found to comply with the limits for a Class B digital device, pursuant to Part 15 of the FCC Rules. These limits are designed to provide reasonable protection against harmful interference in a residential installation. This equipment generates, uses and can radiate radio frequency energy and, if not installed and used in accordance with the instructions, may cause harmful interference to radio communications. However, there is no guarantee that interference will not occur in a particular installation. If this equipment does cause harmful interference to radio or television reception, which can be determined by turning the equipment off and on, the user is encouraged to try to correct the interference by one of the following measures:

- Reorient or relocate the receiving antenna.
- Increase the separation between the equipment and receiver.
- Connect the equipment into an outlet on a circuit different from that to which the receiver is connected.
- Consult the dealer or an experienced radio/TV technician for help.

This device complies with Part 15 of the FCC Rules. Operation is subject to the following two conditions: (1) This device may not cause harmful interference, and (2) this device must accept any interference received, including interference that may cause undesired operation.

FCC Caution: Any changes or modifications not expressly approved by the party responsible for compliance could void the user's authority to operate this equipment.

IMPORTANT NOTE:

FCC Radiation Exposure Statement:

This equipment complies with FCC radiation exposure limits set forth for an uncontrolled environment. This equipment should be installed and operated with minimum distance 20cm between the radiator & your body.

This transmitter must not be co-located or operating in conjunction with any other antenna or transmitter. VF0180 is to be limited in Ch1~Ch11 for 2.4GHz by specified firmware controlled in U.S.A.

INFORMATION TO USER:

The users manual or instruction manual for an intentional or unintentional radiator shall caution the user that changes or modifications not expressly approved by the party responsible for compliance could void the user's authority to operate the equipment.

License and Copyright

Information in this document is subject to change without notice and does not represent a commitment on the part of Creative Technology Ltd. No part of this manual may be reproduced or transmitted in any form or by any means, electronic or mechanical, including photocopying and recording, for any purpose without the written permission of Creative Technology Ltd.

Copyright © 2005 Creative Technology Ltd. All rights reserved. The Creative logo is a trademark or registered trademarks of Creative Technology Ltd. in the United States and /or other countries. Microsoft, Windows and the Windows logo are registered trademarks of Microsoft Corporation. Intel and Pentium are registered trademarks of Intel Corporation. Mac is a registered trademark of Apple Computers Inc.. Red Hat is a registered trademark of Red Hat, Inc. All other products are trademarks or registered trademarks of their respective owners and are hereby recognized as such.

Version 1.0

September 2005