

BABY TO SLEEP


Version : 2.4



Age : 14+

Please retain the packaging for future reference since it contains important information.

Table of Content

<u>IMPORTANT SAFETY INSTRUCTIONS</u>	<u>4</u>
<u>CAUTION</u>	<u>4</u>
<u>CHOKING</u>	<u>4</u>
<u>POWER ADAPTER PRECAUTIONS</u>	<u>4</u>
<u> WARNING</u>	<u>5</u>
<u>FCC INFORMATION FCC ID : ZRB849264</u>	<u>5</u>
<u>RSS210 INFORMATION</u>	<u>6</u>
<u>BABY TO SLEEP PARTS 1</u>	<u>7</u>
<u>BABY TO SLEEP PARTS 2</u>	<u>8</u>
<u>AC ADAPTOR INSTALLATION</u>	<u>8</u>
<u>15° BASE INSTALLATION</u>	<u>9</u>
<u>WALL MOUNT INSTALLATION</u>	<u>9</u>
<u>SWITCH ON BABY TO SLEEP</u>	<u>10</u>
<u>BABY TO SLEEP DEVICE OPERATION</u>	<u>10</u>
<u>BABY TO SLEEP APP OPERATION</u>	<u>12</u>
<u>PLATFORMS</u>	<u>12</u>
<u>BABY TO SLEEP DIRECT CONNECT</u>	<u>12</u>
<u>BABY TO SLEEP ROUTER CONNECT (WLAN)</u>	<u>13</u>

<u>BABY TO SLEEP APP INTERFACE</u>	<u>14</u>
<u>INFORMATION</u>	<u>19</u>
<u>LED STATUS</u>	<u>19</u>
<u>RESET</u>	<u>20</u>
<u>CARE AND MAINTENANCE</u>	<u>20</u>
<u>SPECIFICATION</u>	<u>20</u>

IMPORTANT SAFETY INSTRUCTIONS

All of the safety and operating instructions should be read, adhered to and followed before the unit is operated.

WARNING

- Please keep this packaging since it contains important information.
- Close supervision is necessary when this unit is used by or near children or mentally disabled individuals.
- Use this unit only for its intended use as described in this manual.
- The unit should be situated away from direct sunlight or heat sources such as radiators, electric heaters, heat registers, stoves or other units that produce heat.
- Respect the privacy of others when using the Baby to sleep.

CAUTION

- For ages 8 and up.
- The Baby to sleep is recommended for indoor use only.
- The Baby to sleep is not waterproof. Do not spray or pour liquid on it, and do not immerse it in liquid.
- Nearby Wi-Fi™ equipment can cause interference on the connection between the Baby to sleep and your smartphone or your tablet computer.
- Do not place your device near an electromagnetic source (television, speakers, etc.), which can cause disruptions.

CHOKING

WARNING: This product may contain small parts which may pose a choking hazard to children.

POWER ADAPTER PRECAUTIONS

1. STRANGULATION HAZARD - Keep the adapter cord out of baby's reach.
2. NEVER place the adapter cord within the cot / crib.
3. Secure the adapter cord some distance away from baby's reach.
4. Never use extension cords with AC Adapter. Only use the AC Adapter provided.
5. Only use the power adapter provided. Do not use other power adapters as this may damage the device.

AC ADAPTOR : IN : ACV100-240 OUT : DCV5.0

DISTANCE : About 25 meter (unobstructed) in DIRECT CONNECT

CAMERA : 320 x 240 @ 25 FRAME / SEC.

Wi-Fi : 802.11b/g/n

RESET

Press the RESET button for 5 seconds to reset the device back to factory setting.

CARE AND MAINTENANCE

- Switch off the power of the device and unplug the AC adaptor before cleaning.
- Apply soft and dry cloth onto the product ONLY.
- Make sure there is no hair or lint caught between the wheels, the drive shafts and the camera joint. Clean carefully with your fingers or a pair of tweezers.

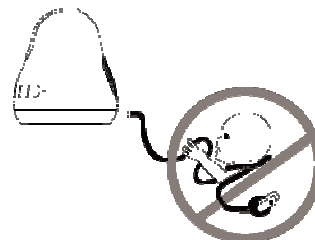
SPECIFICATION

DIMENSION: DIAMETER : 14.8CM
HEIGHT: 16.2CM
HEIGHT (WITH BASE) : 19CM
WEIGHT : 0.62kg (BODY)
..... 0.15kg (15° BASE)
..... 0.08kg (MOUNTING)

6. Do not touch the plug contacts with sharp or metal objects.
7. Do not spray or pour liquid on the unit, and do not immerse it in liquid.
8. The AC/DC adapter which provides disconnection from mains supply shall remain readily operable. Unplug this product when unused for long period of time.
9. Heed all warnings.
10. Follow all instructions.
11. Do not block any ventilation openings. Install in accordance with the manufacturer's instructions.
12. Do not install near any heat as radiators. Heat registers stoves or other product (including amplifiers) that produce heat.
13. Unplug this product during lightning storms or when unused for long periods of time.
14. WARNING: To reduce the risk of fire or electric shock, do not expose this product to rain or moisture and objects filled with liquids, such as vases, should not be placed on this product. This product is designed for indoor use only. Do not expose the product to outside temperatures below 5°C or above 40°C. The product could be damaged. Avoid placing the product near a source of heat or exposing it to sunlight (even through a window). Similarly, excessively low temperatures and humidity could damage the device.

WARNING

Strangulation Hazard-Children have STRANGLED in cords. Keep this cord out of the reach of children (more than 3 ft (0.9m) away). Do not remove this tag



FCC INFORMATION **FCC ID : ZRB849264**

"This device complies with Part 15 of the FCC Rules. Operation is subject to the following two conditions: (1) This device may not cause harmful interference, and (2) this device must accept any interference received, including interference that may cause undesired operation."

WARNING: Changes or modifications to this unit not expressly approved by the party responsible for compliance could void the user's authority to operate the equipment. Note: This equipment has been tested and found to comply with the limits for a Class B digital

device, pursuant to Part 15 of the FCC Rules. These limits are designed to provide reasonable protection against harmful interference in a residential installation. This unit generates uses and can radiate radio frequency energy and if not installed and used in accordance with the instructions, may cause harmful interference to radio communications. However, there is no guarantee that interference will not occur in a particular installation. If this equipment does cause harmful interference to radio or television reception, which can be determined by turning the equipment off and on, the user is encouraged to try and correct the interference by one or more of the following measures:

- Reorient or relocate the receiving antenna.
- Increase the separation between the equipment and receiver.
- Connect the equipment to an outlet on a circuit different from that to which the receiver is connected.
- Consult the dealer or an experienced radio/TV technician for help.

WARNING: To comply with FCC's RF radiation exposure limits for general population/uncontrolled exposure, the antenna(s) used for this transmitter must be installed to provide a separation distance of at least 20 cm from all persons and must not be collocated or operating in conjunction with any other antenna or transmitter.

RSS210 INFORMATION

To comply with Industry Canada's RF radiation exposure limits for general population/uncontrolled exposure, the antenna(s) used for this transmitter must be installed to provide a separation distance of at least 20 cm from all persons and must not be collocated or operating in conjunction with any other antenna or transmitter.

This device complies with Industry Canada licence-exempt RSS standard(s). Operation is subject to the following two conditions: (1) this device may not cause interference, and (2) this device must accept any interference, including interference that may cause undesired operation of the device.

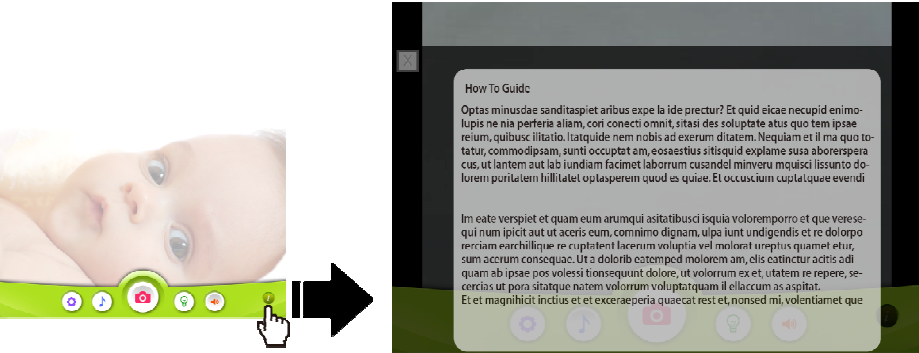
Le présent appareil est conforme aux CNR d'Industrie Canada applicables aux appareils radio exempts de licence. L'exploitation est autorisée aux deux conditions suivantes : (1) l'appareil ne doit pas produire de brouillage, et (2) l'utilisateur de l'appareil doit accepter tout brouillage radioélectrique subi, même si le brouillage est susceptible d'en compromettre le fonctionnement.

This Class B digital apparatus complies with Canadian ICES-003.

Cet appareil numérique de la classe B est conforme à la norme NMB-003 du Canada

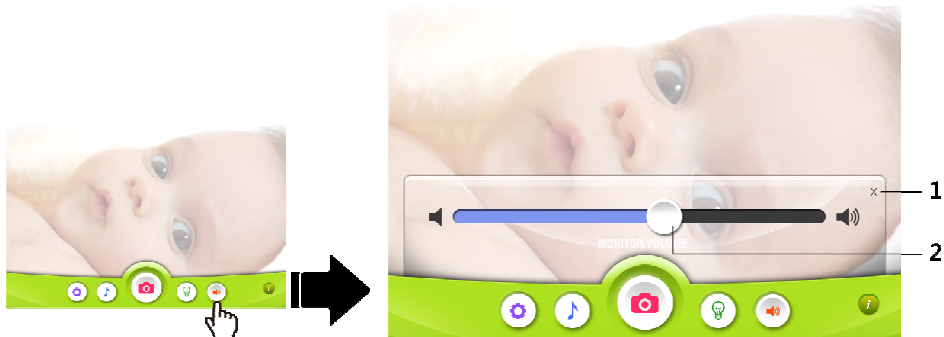
INFORMATION

Press  to enter the INFORMATION screen:




LED STATUS

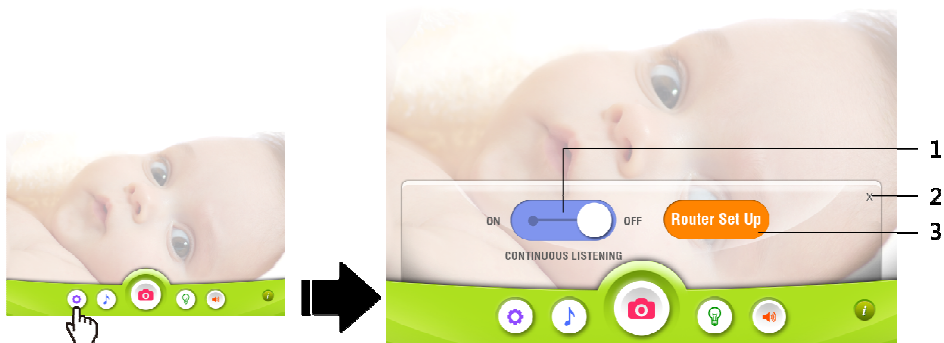
Name	COLOR	STATUS	DESCRIPTION
Wi-Fi INDICATOR	BLUE	ON	CONNECTED
		BLINK RAPIDLY	Wi-Fi Starting
		BLINK SLOWLY	Waiting to be connected
TIMER	BLUE	ON	ASSOCIATED TIMER
SLEEP ENHANCE	BLUE	ON	SLEEP ENHANCE MODE in action



SETTING

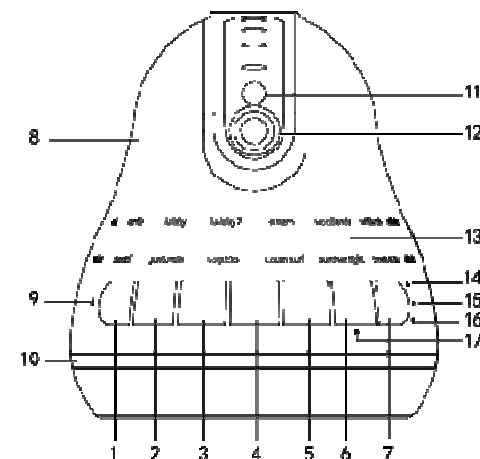
Press  to enter the SETTING PAGE:

1. CONTINUOUS LISTENING
2. CLOSE
3. ROUTER SETUP / DEVICE



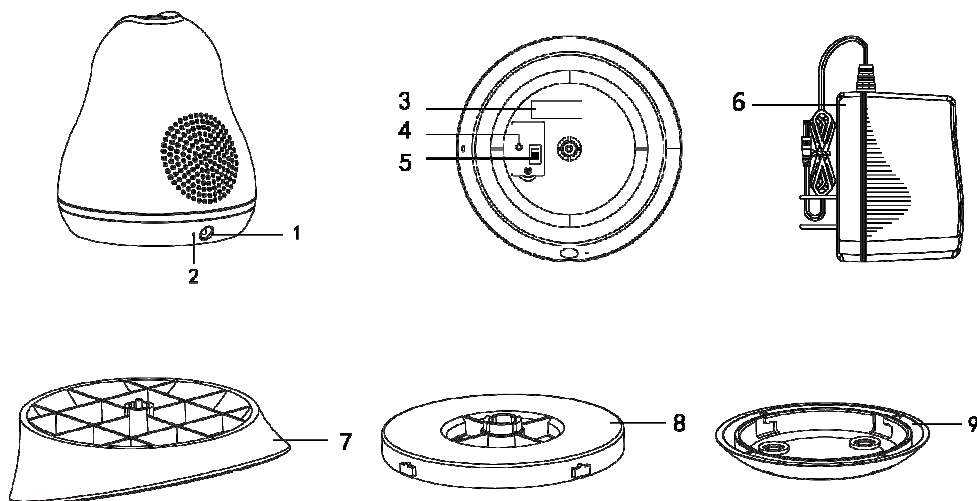
- CONTINUOUS LISTENING allows you to listen to the monitored device even the APP is exit. Please note the listening function will be stopped if another app is using the microphone / speaker of your handheld device. (ie. Music player)
- ROUTER SETUP / DEVICE LIST allows you to select DIRECT CONNECT / ROUTER MODE, as well as to select different device to be monitored.

BABY TO SLEEP PARTS 1



- | | |
|-----------------------|--------------------------|
| 1. VOLUME (-) | 2. VOLUME (+) |
| 3. NIGHT LIGHT TOGGLE | 4. Wi-Fi ON/OFF |
| 5. MUSIC PLAY/STOP | 6. SLEEP ENCHANCE |
| LED NIGHT MODE TOGGLE | 7. SLEEP TIMER |
| 8. BODY | 9. MICROPHONE |
| 10 LED NIGHT LIGHT | 11. NIGHT VISION |
| 12 CAMERA | 13. MUSIC SELECTION |
| 14 TIMER (30 MINUTES) | 15. TIMER (60 MINUTES) |
| 16 TIMER (90 MINUTES) | 17. SLEEP ENCHANCE |
| | INDICATOR |

BABY TO SLEEP PARTS 2



- | | |
|----------------------|--------------------|
| 1. AC ADAPTOR HOLE | 2. Wi-Fi Indicator |
| 3. SSID | 4. RESET |
| 5. Wi-Fi MODE SWITCH | 6. AC ADAPTOR |
| 7. 15° BASE | 8. WALL MOUNT 1 |
| 9. WALL MOUNT 2 | |

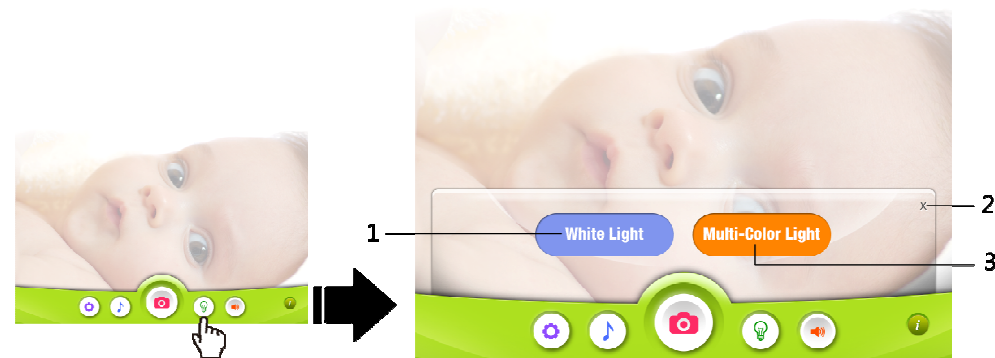
AC ADAPTOR INSTALLATION

- Please refer to SLEEP TIMER and SLEEP ENHANCE MODE of this manual for associated instructions.


NIGHT LIGHT CONTROL

Press  to enter the NIGHT LIGHT CONTROL screen:

To select between “WHITE LIGHT” and “MULTI-COLOR LIGHT”.



MONITORING VOLUME CONTROL

Press  to activate the volume bar to control the volume level of environment to be monitored.

- Device can move around 350° horizontally and 90° vertically.
- Zoom in and out will be at 25% threshold between 100% to 200%. The zoom ratio will be displayed on the screen.
- Snapshot picture can be taken by your handheld device. Pictures will be saved at default Picture folder at iOS, and at "/sdcard/P-BabyToSleep/Pictrue" at Android.
- You can see your baby at the dark by turning on the Night Vision. Video stream will turn to Black and White in Night Vision Mode.

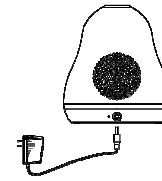
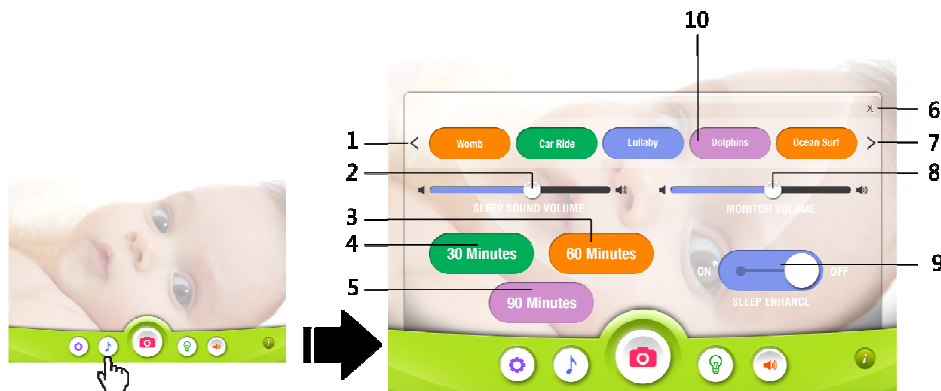
SOUND CONTROL

Press  to enter the SOUND CONTROL screen:

- | | |
|-----------------------|-----------------------|
| 1. TO LEFT | 2. MUSIC VOLUME |
| 3. TIMER (60 MINUTES) | 4. TIMER (30 MINUTES) |
| 5. TIMER (90 MINUTES) | 6. CLOSE |
| 7. TO RIGHT | 8. MONITORING VOLUME |
| 9. SLEEP ENHANCE MODE | 10. MUSIC SELECTION |

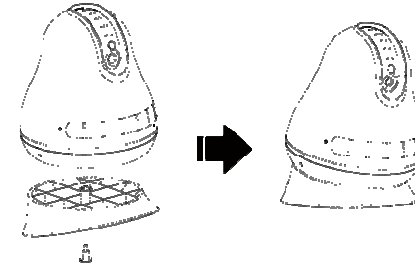
In total 16 music:

Womb	Car Ride	Lullaby	Lullaby2	Stream	Wood lands	White Rain	White Stream
Heart beat	Prenatal	Gentle Rain	Dolphins	Ocean Surf	Summer Night	Brown Noise	White Noise



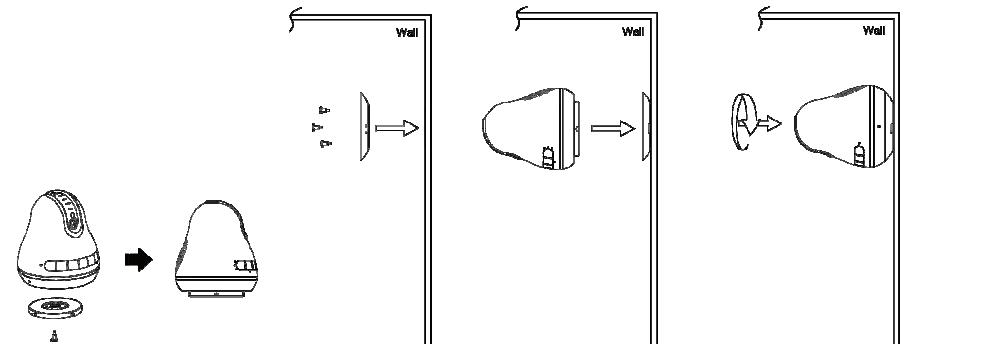
Put **ONLY THE DESIGNATED AC ADAPTOR** into the connection hole and make sure it is firmly connected.

15° BASE INSTALLATION



Put the base below the product and apply the screw until it is firmly attached.

WALL MOUNT INSTALLATION



Apply the screws onto the WALL MOUNT 1 and the wall. Apply the screw of the WALL MOUNT 2 onto the product. Turn the product clockwise onto the WALL MOUNT 1 unit to lock, anti-clockwise to unlock.

SWITCH ON BABY TO SLEEP

There is no power switch for the device. When the AC adaptor is connected, the multi-color LED will turn on, and the device is in service after about 15 seconds, when the LED turns off.

The touch panel of the device will be undergoing calibration every time power on and off, and it is recommended not to touch it before the system is ready.

BABY TO SLEEP DEVICE OPERATION

VOLUME“-”

Decrease the volume by 1/30 each time, and decrease rapidly when press and hold.

VOLUME“+”

Increase the volume by 1/30 each time, and increase rapidly when press and hold.

NIGHT LIGHT TOGGLE

Press to toggle between “WHITE NIGHT LIGHT, “RAINBOW NIGHT LIGHT” and NO Night light.

Wi-Fi ON/OFF

Default state of Wi-Fi connection is ON. The Wi-Fi indicator at the back of the device will be in blink blue after turning on for around 30 seconds. Press ONCE to turn of the Wi-Fi, and NO REMOTE ACCESS to the device will be built.

MUSIC PLAY/STOP

In total 16 music can be played / stop by pressing the associated “.” Default music

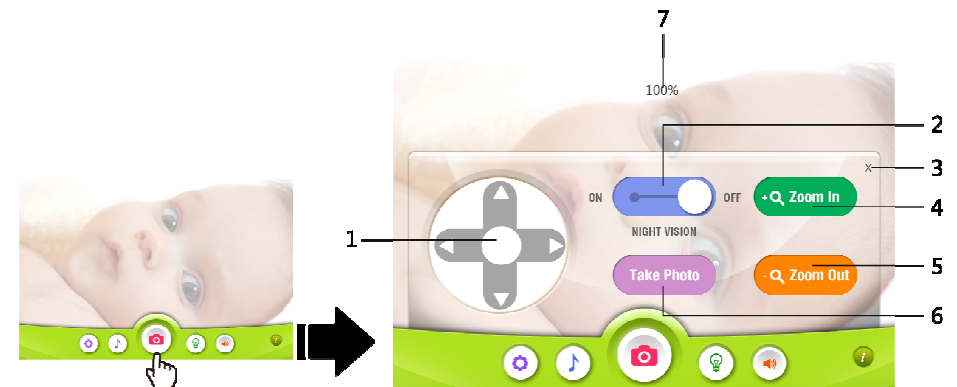
- | | |
|---------------------|------------------------|
| 1. SETTING | 2. MUSIC CONTROL |
| 3. CAMERA CONTROL | 4. NIGHT LIGHT CONTROL |
| 5. VOICE MONITORING | 6. VIDEO SCREEN |
| 7. INFORMATION | |



CAMERA CONTROL


Press  to enter the CAMERA CONTROL screen:

- | | |
|---------------|------------------------|
| 1. MOVEMENT | 2. NIGHT VISION TOGGLE |
| 3. CLOSE | 4. ZOOM IN |
| 5. ZOOM OUT | 6. SNAPSHOT |
| 7. ZOOM RATIO | |



7. Exit your APP.
The Wi-Fi indicator will change from rapid blinking to slow blinking if connection to the router is made.
8. Turn on the Wi-Fi of your handheld device.
Connect to your router's SSID.
Note: You shall not see the SSID of the device (Baby_xxxx) showing, as in the DIRECT CONNECT MODE.
9. Run your APP.
You will see the video stream right the way if there is only one device in the LAN environment.
10. If there is more than one device in the LAN, you will see similar diagram as follows, and you have to select the device you want to connect to:



11. You can always choose another device by clicking “” on the main screen, and select Device.

BABY TO SLEEP APP INTERFACE

Main Screen

is “White Noise”, if no particular music has been selected. Music List:

Womb	Car Ride	Lullaby	Lullaby2	Stream	Wood lands	White Rain	White Stream
Heart beat	Prenatal	Gentle Rain	Dolphins	Ocean Surf	Summer Night	Brown Noise	White Noise

LED NIGHT MODE TOGGLE

By pressing and hold the button for 2 seconds, will toggle between LED NIGHT MODE or DAY MODE.

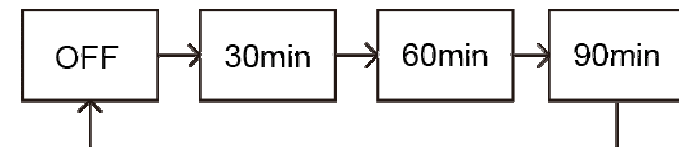
Default:

LED DAY MODE: All LED on the device will be on and solid.

LED NIGHT MODE: All LED on the device (except Night Light) will be off in 5 seconds if no continuous operation. In this mode, if LED has been OFF, a wake-up press of any button has to perform to activate the system before any operation can be proceeded.

SLEEP TIMER

To toggle between 30 minutes, 60 minutes, 90 minutes and OFF.



The volume of the music will be fading out to mute gradually if the sleep timer is set.

SLEEP ENHANCE

Both the volume and the speed of the music will be fading out to 50% gradually if the SLEEP ENHANCE is activated. The setting will be resumed to normal volume and speed if SLEEP ENHANCE is deactivated.

BABY TO SLEEP APP OPERATION

baby to sleep APP INSTALLATION




Download Baby To Sleep from AppStore / GooglePlay.

PLATFORMS

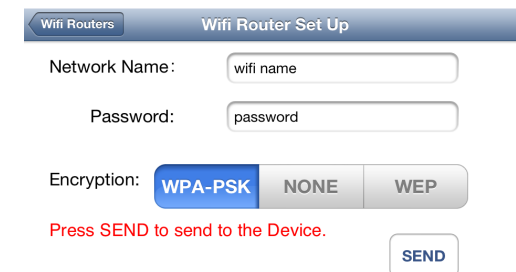
CATEGORY	PARAMETER
SYSTEM	iOS4.3
	Android2.2 OR UP
ANDROID HARDWARE	CPU: 800MHz
	RAM:512MB
	ROM:512MB

BABY TO SLEEP DIRECT CONNECT

1. The Wi-Fi MODE SWITCH at the bottom is set to 1. Turn on the device, wait about 30 seconds, the Wi-Fi indicator will start to blink rapidly.
2. Turn on the Wi-Fi of your hand held device, you will see the SSID begins with (Baby_). Connect it, wait until you see the connected symbol “” or there is a “√” mark in front of the SSID.
3. Run your APP, you shall see the video stream from the device. The Wi-Fi indicator will turn to solid blue.

BABY TO SLEEP ROUTER CONNECT (WLAN)

1. Make sure your handheld device (iphone/Android) can connect to your router and can browse internet.
2. You will need the username and password pair to connect to the router.
Your router needs to be in DHCP mode, and dispatching IP addresses.
3. Make sure your device is connected to your handheld device via DIRECT CONNECT as described, and the Wi-Fi MODE SWITCH is at 1.
4. Run your APP. At the main screen, click “Setting”, then “Router Set Up”.
For iOS user, you have to provide your router’s SSID, for Android user, you can select from the list.
5. Enter the username and password pair to connect to your router, then click “SEND”.



6. Successful message will be shown.
Turn the Wif-Fi MODE SWITCH to 2.
The device will be reset.