


# Dell Vostro 3800 Owner's Manual

Regulatory Model: D08D  
Regulatory Type: D08D001



# Notes, Cautions, and Warnings

 **NOTE:** A NOTE indicates important information that helps you make better use of your computer.

 **CAUTION:** A CAUTION indicates either potential damage to hardware or loss of data and tells you how to avoid the problem.

 **WARNING:** A WARNING indicates a potential for property damage, personal injury, or death.

**Copyright © 2014 Dell Inc. All rights reserved.** This product is protected by U.S. and international copyright and intellectual property laws. Dell™ and the Dell logo are trademarks of Dell Inc. in the United States and/or other jurisdictions. All other marks and names mentioned herein may be trademarks of their respective companies.

2014 - 06

Rev. A01

# Contents

<b>1 Working on Your Computer</b> .....	<b>5</b>
Before Working Inside Your Computer.....	5
Turning Off Your Computer.....	6
After Working Inside Your Computer.....	7
<b>2 Removing and Installing Components</b> .....	<b>8</b>
Recommended Tools.....	8
System Overview.....	8
Inside view .....	8
Removing The Cover.....	9
Installing The Cover.....	9
Removing The Bezel.....	9
Installing The Bezel.....	10
Removing The Optical Drive.....	10
Installing The Optical Drive.....	11
Removing The Hard Drive.....	11
Installing The Hard Drive.....	12
Removing the Expansion Card(s).....	13
Installing the Expansion Card(s).....	13
Removing The Power Supply Unit (PSU).....	13
Installing The Power Supply Unit (PSU).....	15
Removing The Heatsink.....	15
Installing The Heatsink.....	16
Removing the Processor.....	16
Installing the Processor.....	16
Removing the Memory.....	16
Installing the Memory.....	17
Removing The System Fan.....	17
Installing The System Fan.....	18
Removing The Input/Output (I/O) Panel.....	18
Installing The Input/Output (I/O) Panel.....	19
Removing The System Board.....	20
Installing The System Board.....	21
System Board Components.....	21
<b>3 Troubleshooting Your Computer</b> .....	<b>23</b>
Diagnostic Power LED Codes.....	23
Diagnostic Error Messages.....	24


System Error Messages.....	28
<b>4 System Setup.....</b>	<b>29</b>
System Setup Overview.....	29
Enter System Setup.....	29
System Setup Options.....	29
Main.....	29
Advanced.....	30
Boot.....	31
Power.....	32
Security.....	32
Exit.....	32
<b>5 Specifications.....</b>	<b>33</b>
<b>6 Contacting Dell.....</b>	<b>37</b>

# Working on Your Computer


## Before Working Inside Your Computer


Use the following safety guidelines to help protect your computer from potential damage and to help to ensure your personal safety. Unless otherwise noted, each procedure included in this document assumes that the following conditions exist:


- You have read the safety information that shipped with your computer.
- A component can be replaced or--if purchased separately--installed by performing the removal procedure in reverse order.


 **WARNING:** Disconnect all power sources before opening the computer cover or panels. After you finish working inside the computer, replace all covers, panels, and screws before connecting to the power source.


 **WARNING:** Before working inside your computer, read the safety information that shipped with your computer. For additional safety best practices information, see the Regulatory Compliance Homepage at [www.dell.com/regulatory\\_compliance](http://www.dell.com/regulatory_compliance)

 **CAUTION:** Many repairs may only be done by a certified service technician. You should only perform troubleshooting and simple repairs as authorized in your product documentation, or as directed by the online or telephone service and support team. Damage due to servicing that is not authorized by Dell is not covered by your warranty. Read and follow the safety instructions that came with the product.

 **CAUTION:** To avoid electrostatic discharge, ground yourself by using a wrist grounding strap or by periodically touching an unpainted metal surface, such as a connector on the back of the computer.


 **CAUTION:** Handle components and cards with care. Do not touch the components or contacts on a card. Hold a card by its edges or by its metal mounting bracket. Hold a component such as a processor by its edges, not by its pins.

 **CAUTION:** When you disconnect a cable, pull on its connector or on its pull-tab, not on the cable itself. Some cables have connectors with locking tabs; if you are disconnecting this type of cable, press in on the locking tabs before you disconnect the cable. As you pull connectors apart, keep them evenly aligned to avoid bending any connector pins. Also, before you connect a cable, ensure that both connectors are correctly oriented and aligned.


 **NOTE:** The color of your computer and certain components may appear differently than shown in this document.

To avoid damaging your computer, perform the following steps before you begin working inside the computer.

1. Ensure that your work surface is flat and clean to prevent the computer cover from being scratched.
2. Turn off your computer (see Turning Off Your Computer).

 **CAUTION: To disconnect a network cable, first unplug the cable from your computer and then unplug the cable from the network device.**

3. Disconnect all network cables from the computer.
4. Disconnect your computer and all attached devices from their electrical outlets.
5. Press and hold the power button while the computer is unplugged to ground the system board.
6. Remove the cover.

 **CAUTION: Before touching anything inside your computer, ground yourself by touching an unpainted metal surface, such as the metal at the back of the computer. While you work, periodically touch an unpainted metal surface to dissipate static electricity, which could harm internal components.**

## Turning Off Your Computer


 **CAUTION: To avoid losing data, save and close all open files and exit all open programs before you turn off your computer.**

1. Shut down the operating system:

- In Windows 8:


- Using a touch-enabled device:

- a. Swipe in from the right edge of the screen, opening the Charms menu and select **Settings**.

- b. Select the  and then select **Shut down**

- Using a mouse:

- a. Point to upper-right corner of the screen and click **Settings**.

- b. Click the  and select **Shut down**.

- In Windows 7:

1. Click **Start** .

2. Click **Shut Down**.

or

1. Click **Start** .

2. Click the arrow in the lower-right corner of the **Start** menu as shown below, and then click



**Shut Down..**

2. Ensure that the computer and all attached devices are turned off. If your computer and attached devices did not automatically turn off when you shut down your operating system, press and hold the power button for about 6 seconds to turn them off.

## After Working Inside Your Computer

After you complete any replacement procedure, ensure you connect any external devices, cards, and cables before turning on your computer.

1. Replace the cover.



**CAUTION: To connect a network cable, first plug the cable into the network device and then plug it into the computer.**

2. Connect any telephone or network cables to your computer.
3. Connect your computer and all attached devices to their electrical outlets.
4. Turn on your computer.
5. If required, verify that the computer works correctly by running the Dell Diagnostics.

# Removing and Installing Components

This section provides detailed information on how to remove or install the components from your computer.

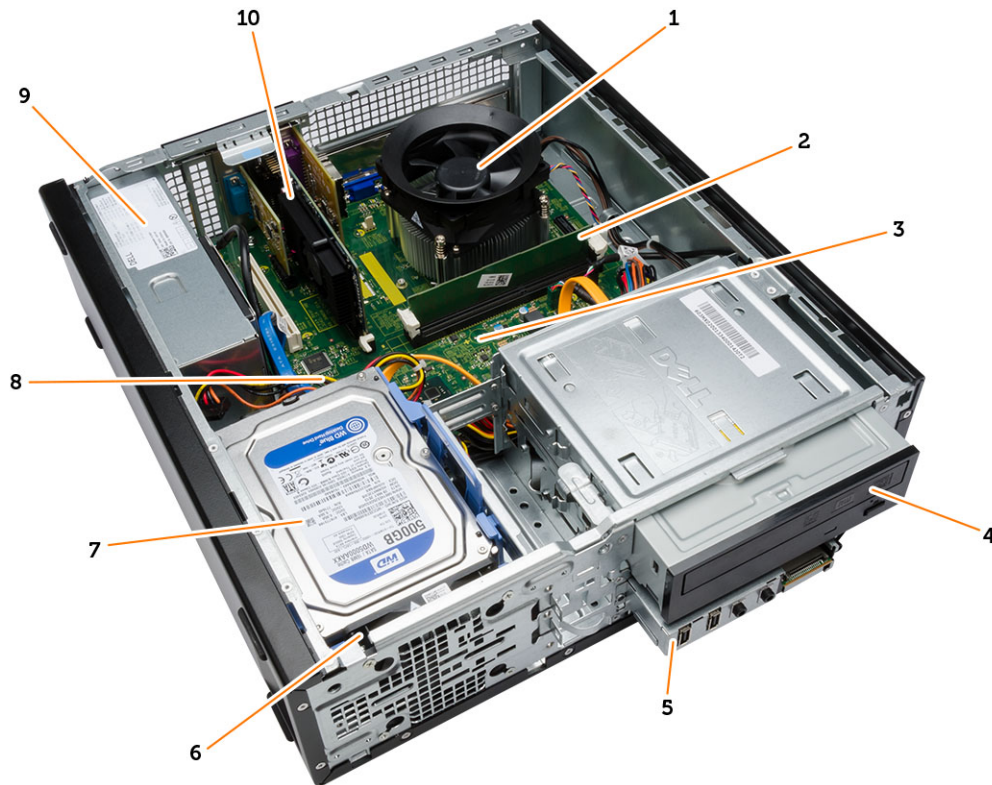
## Recommended Tools

The procedures in this document may require the following tools:

- Small flat-blade screwdriver
- Phillips screwdriver
- Small plastic scribe

## System Overview

### Inside view



1. heatsink fan

2. memory module

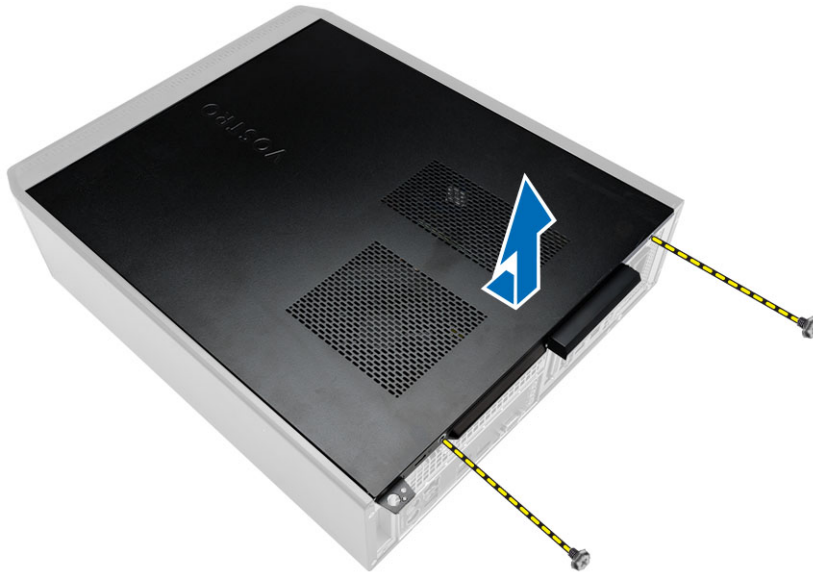
8



3. system board
5. I/O panel
7. hard drive
9. power supply unit (PSU)
4. optical drive
6. system fan
8. coin-cell battery
10. expansion card

## Removing The Cover

1. Follow the procedures in *Before Working Inside Your Computer*.
2. Follow the steps below to remove the cover:
  - a. Remove the screws that secure the cover to the computer.
  - b. Lift and remove the cover from the computer.



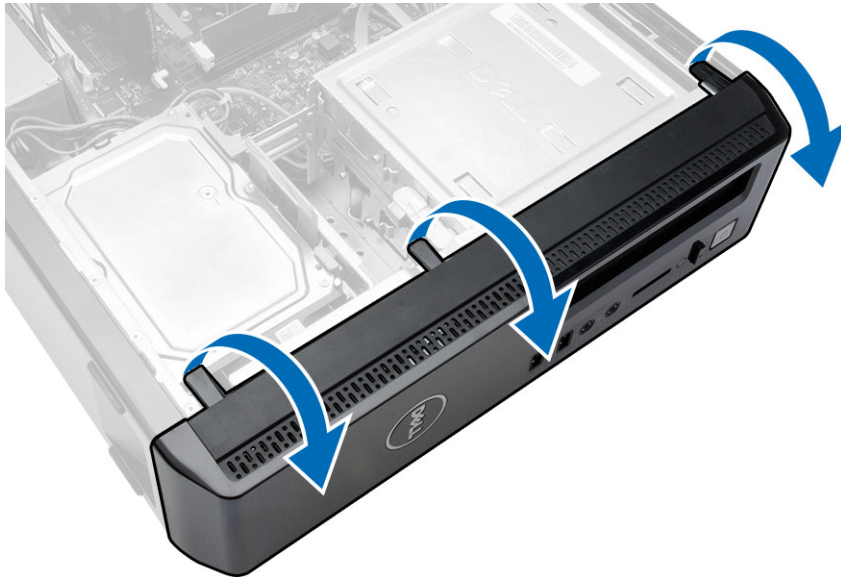
## Installing The Cover

1. Place the cover on the chassis.
2. Replace the screws to secure the cover to the computer.
3. Follow the procedures in *After Working Inside Your Computer*.

## Removing The Bezel

1. Follow the procedures in *Before Working Inside Your Computer*.
2. Remove the cover.

3. Follow the steps below to remove the bezel:
  - a. Pry the front panel retention clips away from the chassis.
  - b. Release the hooks on the opposite edge of the bezel from the chassis.
  - c. Remove the bezel from the computer.



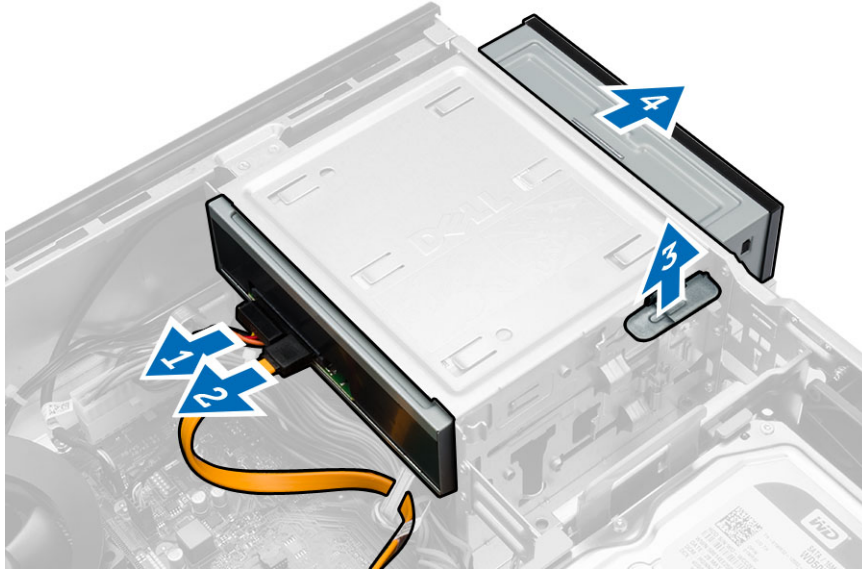
## Installing The Bezel

1. Place the hooks on the notches in the computer.
2. Rotate the front bezel towards the compute .
3. Press the front bezel till the tabs snap in to place.
4. Install the cover.
5. Follow the procedures in *After Working Inside Your Computer*.

## Removing The Optical Drive

1. Follow the procedures in *Before Working Inside Your Computer*.
2. Remove the:
  - cover
  - bezel

3. Follow the steps below to remove the optical drive:
  - a. Disconnect the data cable and power cable from the optical drive [1,2].
  - b. Pull the optical-drive release latch and then push the optical drive towards the front of the computer [3].
  - c. Remove the optical drive from the computer [4].



## Installing The Optical Drive

1. Push the optical drive into the computer till it snaps into place.
2. Connect the data cable and power cable to the optical drive.
3. Install the:
  - bezel
  - cover
4. Follow the procedures in *After Working Inside Your Computer*.

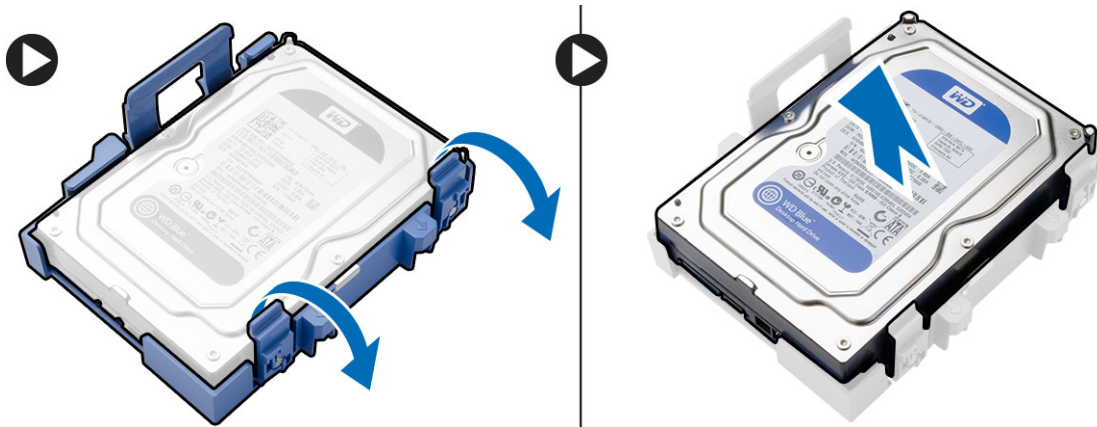
## Removing The Hard Drive

1. Follow the procedures in *Before Working Inside Your Computer*.
2. Remove the:
  - cover
  - bezel

3. Follow the steps below to remove the hard-drive bracket:
  - a. Disconnect the SATA cable and power cable from the hard drive [1,2].
  - b. Push the blue tab on the hard-drive bracket and lift it to remove it from the computer [3,4].



4. Follow the steps below to remove the hard drive from the hard-drive bracket:
  - a. Pry along the retention tabs of the hard-drive bracket to loosen it.
  - b. Lift and remove the hard drive from the hard-drive bracket.

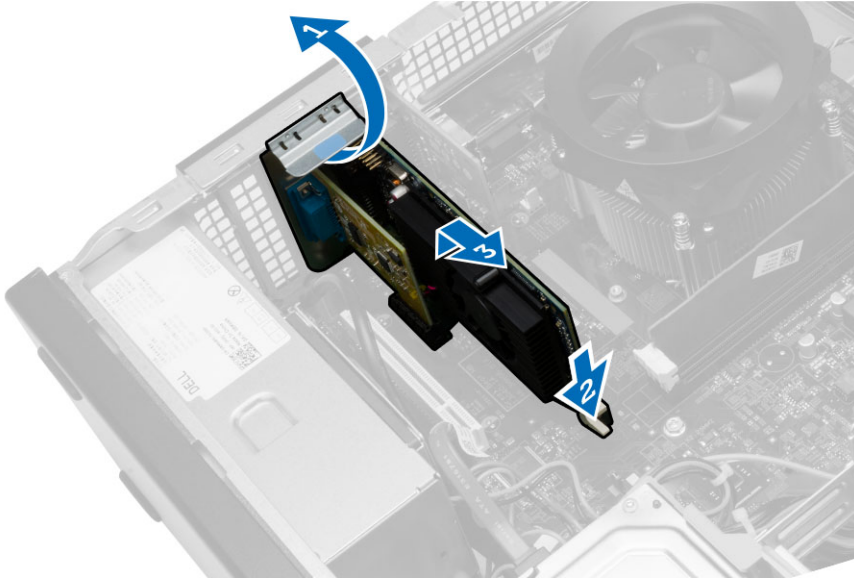


## Installing The Hard Drive

1. Replace the hard drive into the hard-drive bracket.
2. Install the hard drive into its slot in the computer..
3. Connect the SATA cable and the power cable to the hard drive.
4. Install the:
  - bezel
  - cover
5. Follow the procedures in *After Working Inside Your Computer*.

## Removing the Expansion Card(s)

1. Follow the procedures in *Before Working Inside Your Computer*.
2. Remove the cover.
3. Follow the steps to remove the expansion card:
  - a. Press the blue tab and slide down the release lever that secures the expansion card.
  - b. Press on the retaining tab to release the expansion card from its connector.
  - c. Lift the expansion card up out of its connector and remove it from the computer.
  - d. Repeat the same sequence of steps to remove any additional expansion card installed.



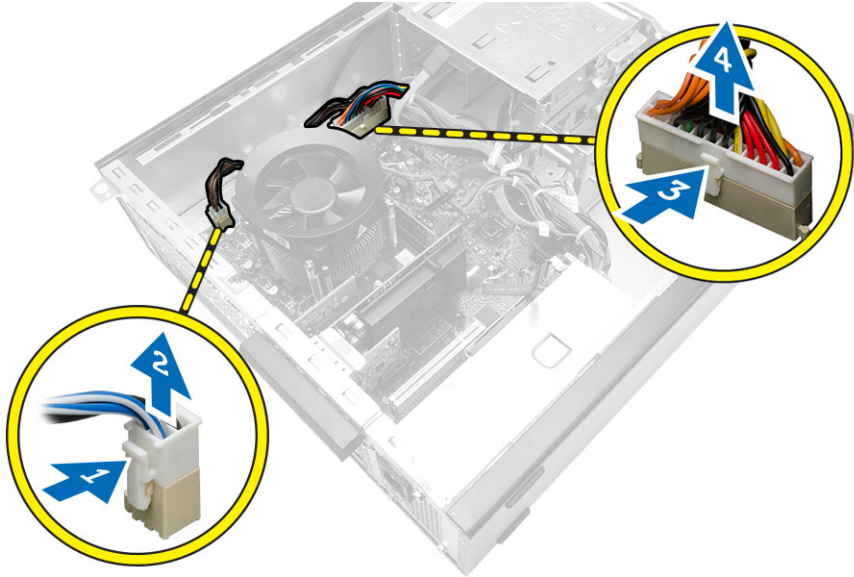
## Installing the Expansion Card(s)

1. Place the expansion card in its connector.
2. Secure the expansion card by pushing the card-retention latch until it snaps into place.
3. Repeat the steps to install any additional expansion cards.
4. Install the cover.
5. Follow the procedures in *After Working Inside Your Computer*.

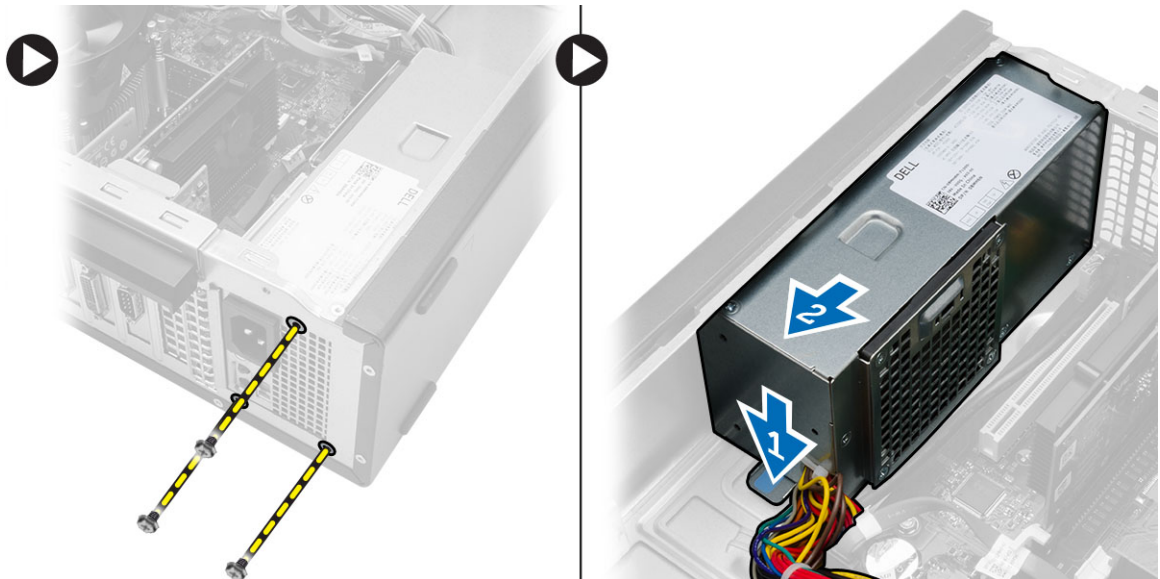
## Removing The Power Supply Unit (PSU)

1. Follow the procedures in *Before Working Inside Your Computer*.
2. Remove the:
  - cover
  - bezel
  - optical drive
  - hard drive

3. Disconnect the following power supply cables from the system board by pressing on the retention latch and lifting it upwards.
- system fan power cable [1,2]
  - system board power cable [3,4]
- a. Un-thread the power cables from the metal clips.



4. Follow the steps below to remove the power supply unit:
- Remove the screws that secure the power supply to the computer.
  - Push-in on the blue release tab beside the power supply [1].
  - Slide the power supply unit towards the front and remove it from the computer [2].

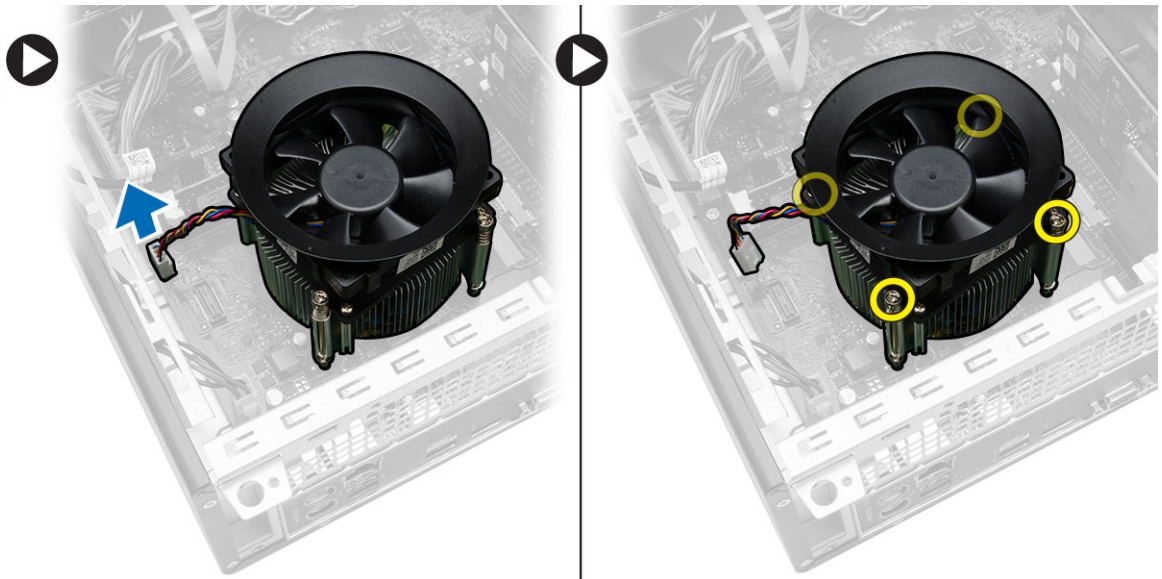


## Installing The Power Supply Unit (PSU)

1. Place the power supply unit into the computer.
2. Slide the power supply unit towards the back of the computer till it snaps into place.
3. Replace the screws to secure the power supply unit to the computer.
4. Thread the power cables through the metal clips.
5. Connect the power cables to the system board.
6. Install the:
  - optical drive
  - hard drive
  - bezel
  - cover
7. Follow the procedures in *After Working Inside Your Computer*.

## Removing The Heatsink

1. Follow the procedures in *Before Working Inside Your Computer*.
2. Remove the:
  - cover
  - bezel
  - optical drive
  - hard drive
3. Follow the steps below to remove the processor heat sink:
  - a. Disconnect the heat sink and fan assembly cable from the system board.
  - b. Loosen the captive-screws that secure the heat sink and fan assembly to the system board.
  - c. Lift the heat sink and fan assembly upward and remove it from the computer.



## Installing The Heatsink

1. Place the heat sink and fan assembly on the processor.
2. Tighten the captive-screws that secure the heat sink and fan assembly to the system board.
3. Connect the heat sink and fan assembly cable to the system board.
4. Install the:
  - bezel
  - cover
5. Follow the procedures in *After Working Inside Your Computer*.

## Removing the Processor

1. Follow the procedures in *Before Working Inside Your Computer*.
2. Remove the:
  - cover
  - heatsink
3. Push the processor release lever down and then press it outward to release it from the retention hook that secures it.
4. Raise the processor cover and lift the processor to remove it from the computer.



## Installing the Processor

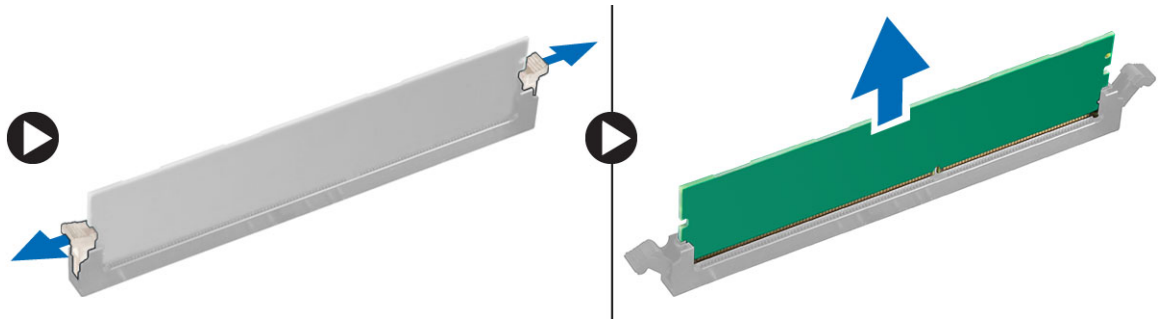
1. Install the processor into the socket.
2. Press down the processor cover to secure it inside the socket.
3. Push the release lever down and then press it inward to hold the retention hook that secures it.
4. Install the:
  - heatsink
  - cover
5. Follow the procedures in *After Working Inside Your Computer*.

## Removing the Memory

1. Follow the procedures in *Before Working Inside Your Computer*.
2. Remove the cover.



3. Press down on the memory-retaining tabs on each side of the memory modules and lift the memory module upwards to remove it from the computer.

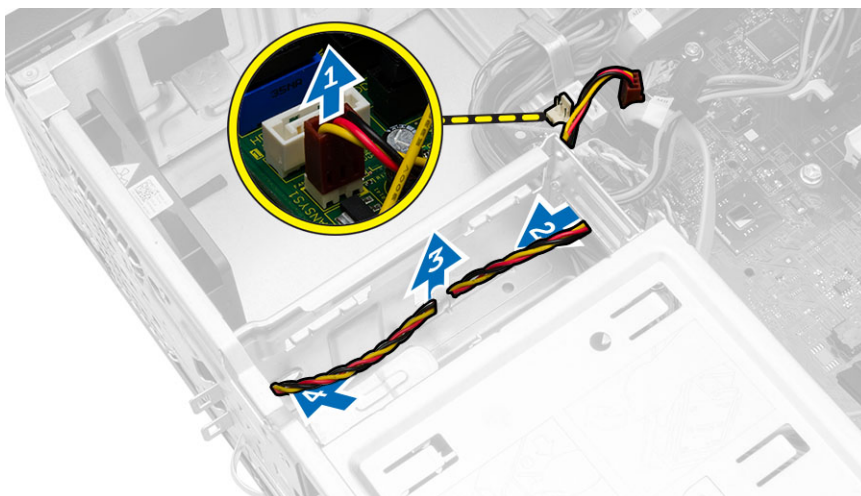


## Installing the Memory

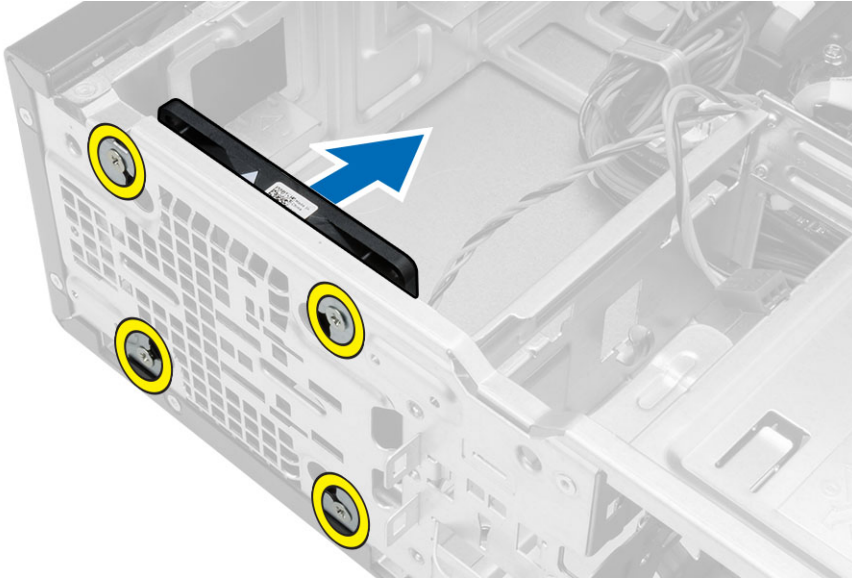
1. Align the notch on the memory-card with the tab in the system-board connector.
2. Insert the memory module into the memory socket.
3. Press down on the memory module until the securing clips secure the memory in place.
4. Install the cover.
5. Follow the procedures in *After Working Inside Your Computer*.

## Removing The System Fan

1. Follow the procedures in *Before Working Inside Your Computer*.
2. Remove the:
  - cover
  - bezel
  - hard drive
3. Follow the steps below to remove the system fan cables:
  - a. Disconnect the fan cable from the system board. [1]
  - b. Un-thread the system fan cable from the metal retention clips. [2,3]



4. Follow the steps below to remove the system fan:
  - a. Remove the screws that secure the system fan to the computer.
  - b. Remove the system fan from the computer.



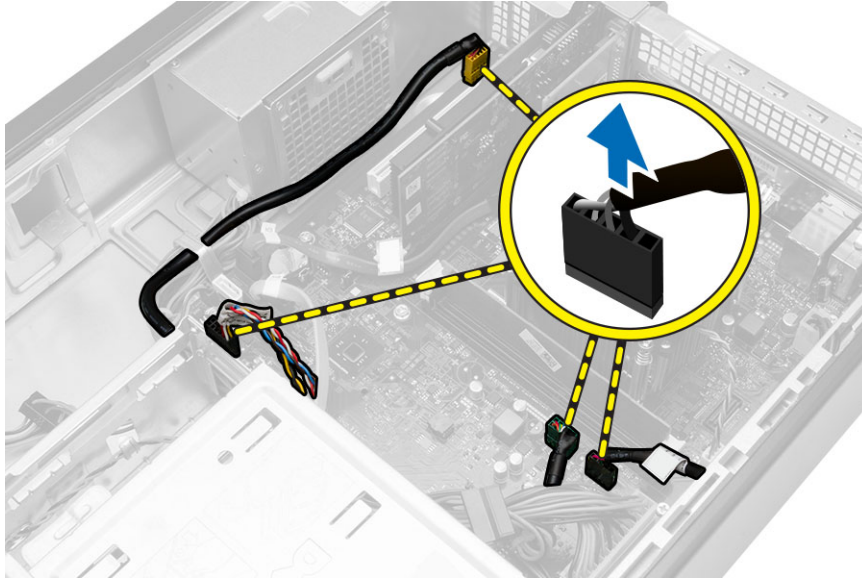
## Installing The System Fan

1. Place the fan on the computer.
2. Replace the screws to secure the fan to the computer.
3. Thread the system fan cable through the metal retention clips.
4. Connect the fan cable to the system board.
5. Install the:
  - hard drive
  - bezel
  - cover
6. Follow the procedures in *After Working Inside Your Computer*.

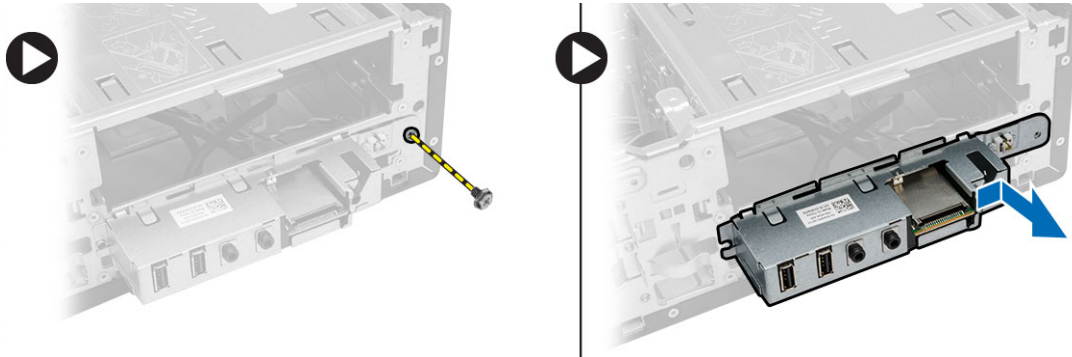
## Removing The Input/Output (I/O) Panel

1. Follow the procedures in *Before Working Inside Your Computer*.
2. Remove the:
  - cover
  - bezel
  - hard drive
  - optical drive

3. Follow the steps below to disconnect the I/O panel cables:
  - a. Disconnect the I/O panel and FlyWire cables from the system board.
  - b. Un-thread the cables from the metal retention clips.



4. Follow the steps below to remove the I/O panel:
  - a. Remove the screw that secures the I/O panel to the computer.
  - b. Slide the I/O panel outwards and remove it from the computer.



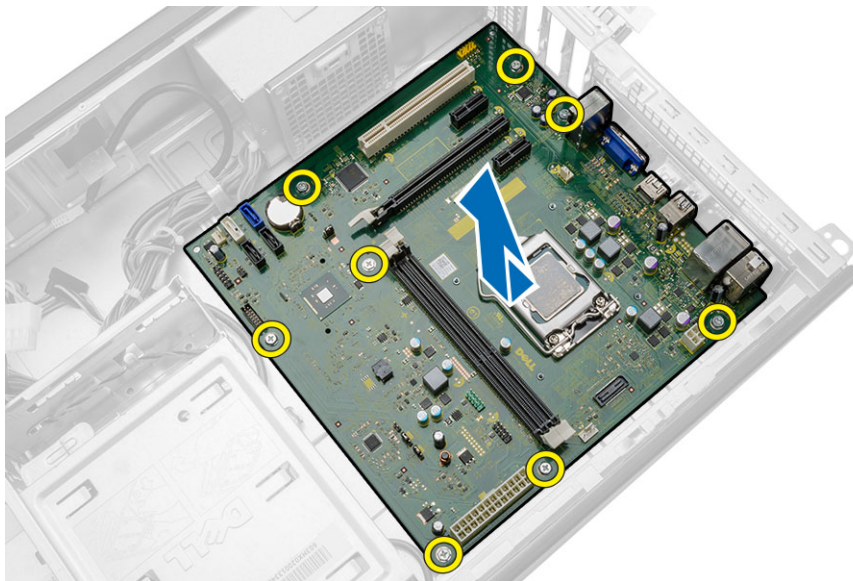
## Installing The Input/Output (I/O) Panel

1. Slide the I/O panel into its slot on the computer.
2. Replace the screw that secures the I/O panel.
3. Route the three cables through the metal clips.
4. Connect the three I/O panel and FlyWire cables to the system board.

5. Install the:
  - optical drive
  - hard drive
  - bezel
  - cover
6. Follow the procedures in *After Working Inside Your Computer*.

## Removing The System Board

1. Follow the procedures in *Before Working Inside Your Computer*.
2. Remove the:
  - cover
  - bezel
  - optical drive
  - hard drive
  - heatsink
  - processor
  - memory
  - expansion cards
  - I/O panel
3. Follow the steps below to remove the system board:
  - a. Disconnect and un-thread all the cables connected to the system board.
  - b. Remove the screws that secure the system board to the computer.
  - c. Slide the system board towards the front of the computer and tilt to a 45-degree angle.
  - d. Lift the system board out of the computer.

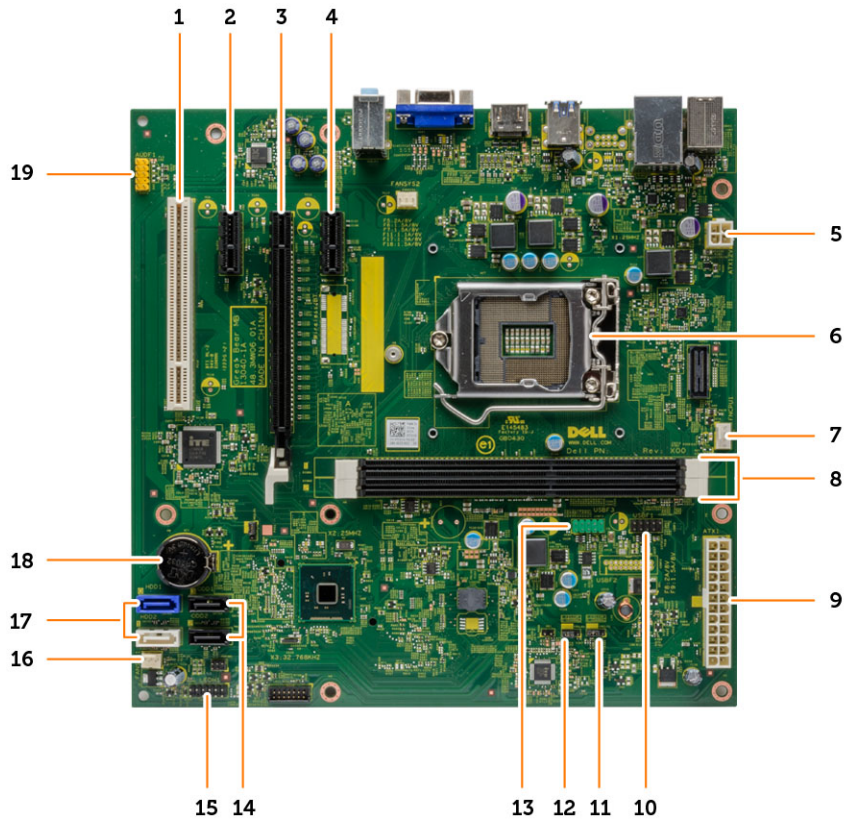


## Installing The System Board

1. Place the system board into the computer at a 45-degree angle and then slide it towards the back of the computer.
2. Replace the screws to secure the system board to the computer.
3. Thread and connect all the cables connected to the system board.
4. Install the:
  - I/O panel
  - memory
  - expansion cards
  - processor
  - heatsink
  - hard drive
  - optical drive
  - bezel
  - cover
5. Follow the procedures in *After Working Inside Your Computer*.

## System Board Components

The following image displays the system board components .



- |                                  |                                  |
|----------------------------------|----------------------------------|
| 1. PCI connector                 | 2. PCIe x1 connector             |
| 3. PCIe x16 connector            | 4. PCIe x1 connector             |
| 5. P2 power connector            | 6. processor socket              |
| 7. CPU fan connector             | 8. memory connectors             |
| 9. P1 power connector            | 10. card reader module connector |
| 11. real-time clock reset jumper | 12. password reset jumper        |
| 13. front USB connector          | 14. SATA connectors              |
| 15. front LED connector          | 16. system fan connector         |
| 17. SATA connectors              | 18. coin-cell battery            |
| 19. front audio connector        |                                  |

# Troubleshooting Your Computer

You can troubleshoot your computer using indicators like Diagnostic Lights, Beep Codes, and Error Messages during the operation of the computer.

## Diagnostic Power LED Codes

Power LED Light Status	Possible Cause	Troubleshooting Steps
Off	The computer is either turned off or is not receiving power.	<ul style="list-style-type: none"> <li>• Re-seat the power cable in the power connector on the back of the computer and the electrical outlet.</li> <li>• If the computer is plugged into a power strip, ensure the power strip is plugged into an electrical outlet and is turned on. Also, bypass power protection devices, power strips, and power extension cables to verify the computer turns on properly.</li> <li>• Ensure the electrical outlet is working by testing it with another device, such as a lamp.</li> </ul>
Blinking Amber	Computer fails to complete POST or processor failure.	<ul style="list-style-type: none"> <li>• Remove and then reinstall any cards.</li> <li>• Remove and then reinstall the graphics card, if applicable.</li> <li>• Ensure the power cable is connected to the motherboard and processor.</li> </ul>
Steady Amber	Computer is in standby or this is a computer fault error condition, including the power supply. Only the +5VSB rail on the power supply is working correctly.	<ul style="list-style-type: none"> <li>• Press the power button to bring the computer out of standby mode.</li> <li>• Ensure all power cables are securely connected to the system board.</li> <li>• Ensure the main power cable and front panel cable are securely connected to the system board.</li> </ul>
Steady White	The computer is fully functional and in the On state.	<p>If the computer is not responding, do the following:</p> <ul style="list-style-type: none"> <li>• Ensure the display is connected and turned on.</li> </ul>

Power LED Light Status	Possible Cause	Troubleshooting Steps
		<ul style="list-style-type: none"> <li>If the display is connected and turned on, listen for a beep code.</li> </ul>

## Diagnostic Error Messages

Error Messages	Description
AUXILIARY DEVICE FAILURE	The touchpad or external mouse may be faulty. For an external mouse, check the cable connection. Enable the <b>Pointing Device</b> option in the system setup program.
BAD COMMAND OR FILE NAME	Ensure that you have spelled the command correctly, put spaces in the proper place, and used the correct pathname.
CACHE DISABLED DUE TO FAILURE	The primary cache internal to the microprocessor has failed. <a href="#">Contact Dell</a> .
CD DRIVE CONTROLLER FAILURE	The optical drive does not respond to commands from the computer.
DATA ERROR	The hard drive cannot read the data.
DECREASING AVAILABLE MEMORY	One or more memory modules may be faulty or improperly seated. Reinstall the memory modules or, if necessary, replace them.
DISK C: FAILED INITIALIZATION	The hard drive failed initialization. Run the hard drive tests in the Dell Diagnostics.
DRIVE NOT READY	The operation requires a hard drive in the bay before it can continue. Install a hard drive in the hard drive bay.
ERROR READING PCMCIA CARD	The computer cannot identify the ExpressCard. Reinsert the card or try another card.
EXTENDED MEMORY SIZE HAS CHANGED	The amount of memory recorded in non-volatile memory (NVRAM) does not match the memory installed in the computer. Restart the computer. If the error appears again, <a href="#">contact Dell</a> .
THE FILE BEING COPIED IS TOO LARGE FOR THE DESTINATION DRIVE	The file that you are trying to copy is too large to fit on the disk, or the disk is full. Try copying the file to a different disk or use a larger capacity disk.
A FILENAME CANNOT CONTAIN ANY OF THE FOLLOWING CHARACTERS: \ / : * ? " < >   -	Do not use these characters in filenames.
GATE A20 FAILURE	A memory module may be loose. Reinstall the memory modules or, if necessary, replace them.



Error Messages	Description
GENERAL FAILURE	The operating system is unable to carry out the command. The message is usually followed by specific information. For example, Printer out of paper. Take the appropriate action.
HARD-DISK DRIVE CONFIGURATION ERROR	The computer cannot identify the drive type. Shut down the computer, remove the hard drive, and boot the computer from an optical drive. Then, shut down the computer, reinstall the hard drive, and restart the computer. Run the Hard Disk Drive tests in the Dell Diagnostics.
HARD-DISK DRIVE CONTROLLER FAILURE 0	The hard drive does not respond to commands from the computer. Shut down the computer, remove the hard drive, and boot the computer from an optical drive. Then, shut down the computer, reinstall the hard drive, and restart the computer. If the problem persists, try another drive. Run the Hard Disk Drive tests in the Dell Diagnostics.
HARD-DISK DRIVE FAILURE	The hard drive does not respond to commands from the computer. Shut down the computer, remove the hard drive, and boot the computer from an optical drive. Then, shut down the computer, reinstall the hard drive, and restart the computer. If the problem persists, try another drive. Run the <b>Hard Disk Drive</b> tests in the <b>Dell Diagnostics</b> .
HARD-DISK DRIVE READ FAILURE	The hard drive may be defective. Shut down the computer, remove the hard drive, and boot the computer from an optical. Then, shut down the computer, reinstall the hard drive, and restart the computer. If the problem persists, try another drive. Run the <b>Hard Disk Drive</b> tests in the Dell Diagnostics.
INSERT BOOTABLE MEDIA	The operating system is trying to boot to non-bootable media, such as a floppy disk or optical drive. Insert bootable media.
INVALID CONFIGURATION INFORMATION-PLEASE RUN SYSTEM SETUP PROGRAM	The system configuration information does not match the hardware configuration. The message is most likely to occur after a memory module is installed. Correct the appropriate options in the system setup program.
KEYBOARD CLOCK LINE FAILURE	For external keyboards, check the cable connection. Run the <b>Keyboard Controller</b> test in the <b>Dell Diagnostics</b> .

Error Messages	Description
KEYBOARD CONTROLLER FAILURE	For external keyboards, check the cable connection. Restart the computer, and avoid touching the keyboard or the mouse during the boot routine. Run the <b>Keyboard Controller</b> test in the <b>Dell Diagnostics</b> .
KEYBOARD DATA LINE FAILURE	For external keyboards, check the cable connection. Run the <b>Keyboard Controller</b> test in the <b>Dell Diagnostics</b> .
KEYBOARD STUCK KEY FAILURE	For external keyboards or keypads, check the cable connection. Restart the computer, and avoid touching the keyboard or keys during the boot routine. Run the <b>Stuck Key</b> test in the <b>Dell Diagnostics</b> .
LICENSED CONTENT IS NOT ACCESSIBLE IN MEDIADIRECT	Dell MediaDirect cannot verify the Digital Rights Management (DRM) restrictions on the file, so the file cannot be played.
MEMORY ADDRESS LINE FAILURE AT ADDRESS, READ VALUE EXPECTING VALUE	A memory module may be faulty or improperly seated. Reinstall the memory modules or, if necessary, replace them.
MEMORY ALLOCATION ERROR	The software you are attempting to run is conflicting with the operating system, another program, or a utility. Shut down the computer, wait 30 seconds, and then restart it. Try to run the program again. If the error message still appears, see the software documentation.
MEMORY DOUBLE WORD LOGIC FAILURE AT ADDRESS, READ VALUE EXPECTING VALUE	A memory module may be faulty or improperly seated. Reinstall the memory modules or, if necessary, replace them.
MEMORY ODD/EVEN LOGIC FAILURE AT ADDRESS, READ VALUE EXPECTING VALUE	A memory module may be faulty or improperly seated. Reinstall the memory modules or, if necessary, replace them.
MEMORY WRITE/READ FAILURE AT ADDRESS, READ VALUE EXPECTING VALUE	A memory module may be faulty or improperly seated. Reinstall the memory modules or, if necessary, replace them.
NO BOOT DEVICE AVAILABLE	The computer cannot find the hard drive. If the hard drive is your boot device, ensure that the drive is installed, properly seated, and partitioned as a boot device.
NO BOOT SECTOR ON HARD DRIVE	The operating system may be corrupted, <a href="#">contact Dell</a> .
NO TIMER TICK INTERRUPT	A chip on the system board may be malfunctioning. Run the <b>System Set</b> tests in the <b>Dell Diagnostics</b> .

Error Messages	Description
NOT ENOUGH MEMORY OR RESOURCES. EXIT SOME PROGRAMS AND TRY AGAIN	You have too many programs open. Close all windows and open the program that you want to use.
OPERATING SYSTEM NOT FOUND	Reinstall the hard drive. If the problem persists, <a href="#">contact Dell</a> .
OPTIONAL ROM BAD CHECKSUM SECTOR NOT FOUND	The optional ROM has failed. <a href="#">Contact Dell</a> . The operating system cannot locate a sector on the hard drive. You may have a defective sector or corrupted FAT on the hard drive. Run the Windows error-checking utility to check the file structure on the hard drive. See Windows Help and Support for instructions (click Start > Help and Support). If a large number of sectors are defective, back up the data (if possible), and then reformat the hard drive.
SEEK ERROR	The operating system cannot find a specific track on the hard drive.
SHUTDOWN FAILURE	A chip on the system board may be malfunctioning. Run the <b>System Set</b> tests in the <a href="#">contact Dell</a> .
TIME-OF-DAY CLOCK LOST POWER	System configuration settings are corrupted. Connect your computer to an electrical outlet to charge the battery. If the problem persists, try to restore the data by entering the system setup program, then immediately exit the program. If the message reappears, <a href="#">contact Dell</a> .
TIME-OF-DAY CLOCK STOPPED	The reserve battery that supports the system configuration settings may require recharging. Connect your computer to an electrical outlet to charge the battery. If the problem persists, <a href="#">contact Dell</a> .
TIME-OF-DAY NOT SET-PLEASE RUN THE SYSTEM SETUP PROGRAM	The time or date stored in the system setup program does not match the system clock. Correct the settings for the <b>Date and Time</b> options.
TIMER CHIP COUNTER 2 FAILED	A chip on the system board may be malfunctioning. Run the <b>System Set tests</b> in the <b>Dell Diagnostics</b> .
UNEXPECTED INTERRUPT IN PROTECTED MODE	The keyboard controller may be malfunctioning, or a memory module may be loose. Run the <b>System Memory</b> tests and the <b>Keyboard Controller</b> test in the <a href="#">System Setup</a> or <a href="#">contact Dell</a> .
X:\ IS NOT ACCESSIBLE. THE DEVICE IS NOT READY	Insert a disk into the drive and try again.

# System Error Messages

System Message	Description
Alert! Previous attempts at booting this system have failed at checkpoint [nnnn]. For help in resolving this problem, please note this checkpoint and contact Dell Technical Support	The computer failed to complete the boot routine three consecutive times for the same error.
CMOS checksum error	Possible motherboard failure or Real-time clock (RTC) battery low.
CPU fan failure	CPU fan has failed
System fan failure	System fan has failed
Hard-disk drive failure	Possible hard disk drive failure during POST
Keyboard failure	Keyboard failure or loose cable. If reseating the cable does not solve the problem, replace the keyboard.
No boot device available	No bootable partition on hard disk drive, the hard disk drive cable is loose, or no bootable device exists. <ul style="list-style-type: none"><li>• If the hard drive is your boot device, ensure that the cables are connected and that the drive is installed properly and partitioned as a boot device.</li><li>• Enter system setup and ensure that the boot sequence information is correct.</li></ul>
No timer tick interrupt	A chip on the system board might be malfunctioning or motherboard failure.
USB over current error	Disconnect the USB device. The USB device needs more power for it to function properly. Use an external power source to connect the USB device, or if the device has two USB cables, connect both of them.
CAUTION - Hard Drive SELF MONITORING SYSTEM has reported that a parameter has exceeded its normal operating range. Dell recommends that you back up your data regularly. A parameter out of range may or may not indicate a potential hard drive problem	S.M.A.R.T error, possible hard disk drive failure


# System Setup

## System Setup Overview

System Setup allows you to:


- change the system configuration information after you add, change, or remove any hardware in your computer.
- set or change a user-selectable option such as the user password.
- read the current amount of memory or set the type of hard drive installed.

Before you use System Setup, it is recommended that you write down the System Setup screen information for future reference.

 **CAUTION: Unless you are an expert computer user, do not change the settings for this program. Certain changes can cause your computer to work incorrectly.**

## Enter System Setup

1. Turn on (or restart) your computer.
2. After the white Dell logo appears, press <F2> or <F12> immediately.  
The System Setup page displays.

 **NOTE:** If you wait too long and the operating system logo appears, continue to wait until you see the desktop. Then, shut down or restart your computer and try again.

## System Setup Options

### Main

<b>System Information</b>	
BIOS Version	Displays the computer model number.
Build Date	Displays the BIOS revision.
System Date	Displays the date the system BIOS was built.
System Time	Re-sets the date on the computer's internal calendar.
Service Tag	Re-sets the time on the computer's internal clock.
Asset Tag	Displays the service tag of your computer.
	Displays the asset tag of your computer (if available).

### Processor Information

Processor Type	Displays the type of processor.
Processor ID	Displays the processor ID
Processor Core Count	Displays the processor core count
L1 Cache Size	Displays the processor L1 cache size.
L2 Cache Size	Displays the processor L2 cache size.
L3 Cache Size	Displays the processor L3 cache size.
<b>Memory Information</b>	
Memory Installed	Displays the total computer memory.
Memory Available	Displays the available memory.
Memory Speed	Displays the memory speed.
Memory Technology	Displays the type and technology.
<b>SATA Information</b>	
SATA 0	Displays the model number and capacity of the hard drive.
SATA 1	Displays the model number and capacity of the hard drive.
SATA 2	Displays the model number and capacity of the hard drive.
SATA 3	Displays the model number and capacity of the hard drive.

## Advanced

---

### Processor Configuration

---

Multi Core Support	Enable or disable Multi Core Support.	Default: Enabled
Limit CPUID Value	Enable or disable the Limit CPUID Value feature.	Default: Enabled
CPU XD Support	Enable or disable the CPU XD feature.	Default: Enabled
Intel Virtualization Technology	Enable or disable the Intel Virtualization feature.	Default: Enabled
Intel SpeedStep	Enable or disable the Intel SpeedStep feature.	Default: Enabled
Intel Turbo Boost Technology	Enable or disable Intel Turbo Boost Technology.	Default: Enabled

### USB Configuration

Front USB Ports	Enable or disable the Front USB Ports.	Default: Enabled
Rear USB Ports	Enable or disable the Rear USB Ports.	Default: Enabled

---

## Processor Configuration

---

### Onboard Device Configuration

Onboard Audio Controller	Enable or disable the onboard audio controller.	Default: Enabled
SATA Mode	Displays the SATA Mode	Default: AHCI
Intel Multi-Display	Enable or disable the Intel Multi-Display Technology.	Default: Disabled
Onboard LAN Controller	Enable or disable the onboard LAN controller.	Default: Enabled
Onboard LAN Boot ROM	Enable or disable the onboard LAN boot ROM.	Default: Disabled

### Boot

Numlock Key	Enables or disables the numlock key during Boot.
Secure Boot Control	Enable or disable the Secure Boot Control.
Load Legacy OPROM	Enable or disable loading of a legacy OPROM
Keyboard Errors	Enable or disable displaying keyboard errors.
USB Boot Support	Enable or Disable USB Boot Support.
Boot Mode	Select the Boot mode.
1st Boot Device	Enable or disable the boot device.
2nd Boot Device	Enable or disable the boot device.
3rd Boot Device	Enable or disable the boot device.
4th Boot Device	Enable or disable the boot device.
5th Boot Device	Enable or disable the boot device.
Hard Disk Drivers	Display information about Hard Disk Drivers
Network Drivers	Displays information about Network Drives

## Power

Wake up by Integrated LAN/WLAN	Enable or disable Wake up by Integrated LAN/WLAN
AC Recovery	Specifies the AC recovery mode.
Auto Power On	Enable or disable Auto Power On mode.

## Security


Supervisor Password	Specifies whether an administrator password has been assigned.
User Password	Specifies whether a user password has been assigned.
Set Supervisor Password	Allows you to change or delete the administrator password.
HDD Protection	Enable or disable HDD protection.

## Exit

This section allows you to save, discard, and load default settings before exiting from System Setup.



# Specifications

 **NOTE:** Offerings may vary by region. The following specifications are only those required by law to ship with your computer. For more information about the configuration of your computer, go to **Help and Support** in your Windows operating system and select the option to view information about your computer.

<b>Processor</b>	
Type	<ul style="list-style-type: none"> <li>• Intel Celeron</li> <li>• Intel Pentium Dual Core</li> <li>• Intel Dual Core i3 (4th Generation)</li> <li>• Intel Dual Core i5 (4th Generation)</li> <li>• Intel Dual Core i7 (4th Generation)</li> </ul>
L3 cache	Up to 8 MB
<b>Memory</b>	
Memory module connector	two DIMM slots
Memory module capacity	2 GB, 4 GB, 6 GB, 8 GB, and 16 GB
Type	1600 MHz DDR3 (Non-ECC)
Minimum memory	2 GB
Maximum memory	16 GB
<b>Video</b>	
Video Type:	
Integrated	Intel HD 4600 Graphics
Discrete	PCI Express x16 graphics card <ul style="list-style-type: none"> <li>• Nvidia GT 705</li> <li>• Nvidia GTX 745</li> </ul>
Integrated video memory	Shared system memory
<b>Audio</b>	
Integrated	Integrated 5.1 high-definition audio
<b>Network</b>	
Integrated	Realtek 10/100/1000 Mbps Ethernet

<b>System Information</b>		
Chipset	Intel H81	
BIOS chip (NVRAM)	8M SPI Flash ROM	
<b>Expansion Bus</b>		
Bus speed:		
PCI Express	PCIe 2.0 at speeds upto 5.0 GT/s	
SATA	0,1 SATA Gen 3 at 6 GB/s and 2,3 SATA Gen 2 at 3 GB/s	
USB	80 Mbps	
<b>Cards</b>	<b>Vostro 3800</b>	<b>Vostro 3900 series</b>
PCIe x16	one half-height card	one full height card
PCIe x1	up to two half-height cards	up to two full height cards
PCI	one half height card	one full height card
<b>Drives</b>		
Externally accessible:		
5.25 inch drive bays	one	
Internally accessible:		
3.5 inch drive bays	one	
<b>External Connectors</b>		
Audio:		
Back panel	three connectors	
Front Panel	two front-panel connectors for headphone and microphone	
Network	one RJ45 connector	
USB:		
Front panel	<ul style="list-style-type: none"> <li>two USB 2.0 connectors</li> </ul>	
Back panel	four USB 2.0 connectors, two USB 3.0 connectors	
PS 2	used to connect a PS 2 compatible keyboard or mouse	
Video	<ul style="list-style-type: none"> <li>one 15-hole VGA connector</li> <li>one 19-pin HDMI connector</li> </ul>	




---

## Control Lights And Diagnostic Lights

---

power button light	white light — solid white light indicates power-on state.  amber light — solid amber light indicates sleep/stand by state of the computer; blinking amber light indicates a problem with the system board.
drive activity light	white light — blinking white light indicates that the computer is reading data from, or writing data to the hard drive.

---

Power	Vostro 3800	Vostro 3900 series
Coin-cell battery	3 V CR2032 lithium coin cell	3 V CR2032 lithium coin cell
Input voltage	90 VAC – 132 VAC / 180 VAC–264 VAC	180 VAC–264 VAC
Input frequency	50 Hz to 60 Hz	50 Hz to 60 Hz
Wattage	250 W	300 W
Input current	8.00 A / 4.00 A	4.50 A
 <b>NOTE:</b> Vostro V 3800 :Total power output of +5 V and +3.30 V can not exceed 75 W		
 <b>NOTE:</b> Vostro V 3900 :Total power output of +5 V and +3.30 V can not exceed 90 W		
Maximum heat dissipation	853 BTU/hr	1024 BTU/hr
 <b>NOTE:</b> Heat dissipation is calculated by using the power supply wattage rating.		

---

## Physical

---

### Vostro 3800:

Height	380 mm (14.96 inches)
Width	102 mm (4.01 inches)
Depth	433.1 mm (17.05 inches)
Weight (Minimum)	7.2 kg (15.87 lb)

### Vostro 3900 series:

Height	380 mm (14.96 inches)
Width	175 mm (6.88 inches)
Depth	436.3 mm (17.17 inches)
Weight (Minimum)	8.5 kg (18.73 lb)

---

**Environmental**

---


## Temperature:

Operating 10 °C to 35 °C (50 °F to 95 °F)

Storage -40 °C to 65 °C (-40 °F to 149 °F)

Relative humidity 20 % to 80 % (non-condensing)

## Altitude:


 **NOTE:** V 3800 and V 3900 meet the China 5000 m altitude requirements.

Operating -15.20 m to 3048 m (-50 ft to 10,000 ft)

Storage -15.20 m to 10,668 m (-50 ft to 35,000 ft)

Airborne contaminant level G1 as defined by ISA-S71.04-1985

# Contacting Dell

 **NOTE:** If you do not have an active Internet connection, you can find contact information on your purchase invoice, packing slip, bill, or Dell product catalog.

Dell provides several online and telephone-based support and service options. Availability varies by country and product, and some services may not be available in your area. To contact Dell for sales, technical support, or customer service issues:

1. Visit **dell.com/support**
2. Select your support category.
3. Verify your country or region in the Choose a Country/Region drop-down menu at the top of page.
4. Select the appropriate service or support link based on your need.