

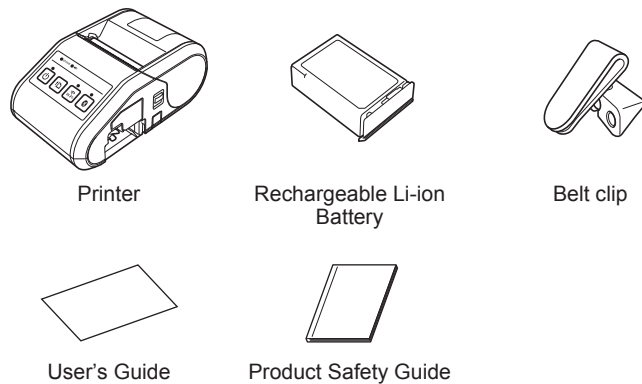
Thank you for purchasing the Brother RuggedJet RJ-3050 mobile printer. Read the included User's Guide and Product Safety Guide, before using the printer. For detailed operation instructions, see the Online User's Guide (Brother Solutions Center at <http://support.brother.com/>). We suggest that you keep these documents in a handy place for future reference. To download the latest manuals, please visit the Brother Solutions Center (<http://support.brother.com/>), where you can also download the latest drivers and utilities for your printer, read FAQs and troubleshooting tips or learn about special printing solutions.

Printed in China
LBD531001

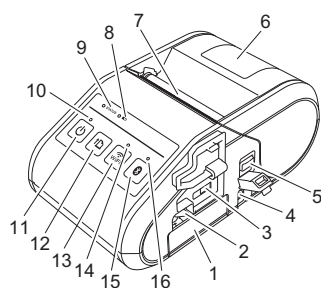


Unpacking the RJ-3050

Check that the package contains the following before using the printer.



General Description

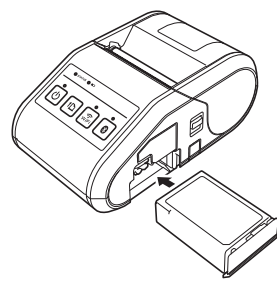


- | | |
|---|---|
| 1 Battery compartment | 12 f (Feed) button
(To feed the paper or print the printer settings) |
| 2 Battery cover latch | 13 Wi-Fi button |
| 3 Mini-USB port | 14 Wi-Fi indicator |
| 4 AC/DC connector | 15 Bluetooth button
(To communicate with your Bluetooth-equipped computer/adaptor or your network access point/router) |
| 5 Cover open lever | 16 Bluetooth indicator |
| 6 RD Roll compartment cover | |
| 7 Paper outlet | |
| 8 Battery indicator | |
| 9 STATUS indicator | |
| 10 POWER indicator | |
| 11 (Power) button
(To turn the printer on/off) | |

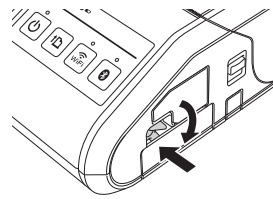
Using the Rechargeable Li-ion Battery

Installing the Rechargeable Li-ion Battery

1. Make sure that the cover latch is lifted up, and then insert the battery into the battery compartment with the battery cover attached to the battery. Make sure that the terminal end of the battery is facing inward.



2. With the battery inserted and while pushing the battery lightly, lower the cover latch until it clicks locking the battery in place.



Removing the Rechargeable Li-ion Battery

While pushing the battery lightly, lift the cover latch to unlock the battery, and then remove the battery.

Turning the Printer On or Off

On: Press and hold the Power button until the POWER indicator is lit in green. Off: Press and hold the Power button until the STATUS indicator is lit in red.

NOTE

When turning the printer off, keep the AC adapter connected or the batteries installed until the STATUS indicator goes off.

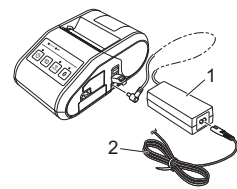
Charging the Rechargeable Li-ion Battery

1. Make sure that the printer is turned off.
2. Make sure that the rechargeable Li-ion battery is installed in the printer.
3. Use the AC adapter and AC power cord to connect the printer to an AC power outlet (see Connecting to an AC Power Outlet (Optional)), or use the car adapter to connect the printer to a DC power outlet (see Connecting to a DC Power Outlet (Optional)).
4. The battery indicator light is orange when the battery is charging. When the rechargeable Li-ion battery is fully charged, the battery indicator light turns off. Disconnect the AC adapter or car adapter from the AC/DC connector. For details, see the Online User's Guide.

Connecting to an AC Power Outlet (Optional)

Connect the printer to a nearby AC power outlet to charge the rechargeable battery.

1. Connect the AC adapter to the printer.
2. Connect the AC power cord to the AC adapter.
3. Connect the AC power cord to a nearby AC power outlet (100 - 240 VAC, 50 - 60 Hz).

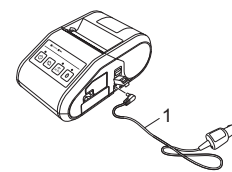


- 1 AC adapter
- 2 AC power cord

Connecting to a DC Power Outlet (Optional)

Connect the printer to your vehicle's 12 V DC power outlet (cigarette lighter, etc.) to charge the rechargeable battery.

1. Connect the car adapter to the vehicle's 12 V DC power outlet.
2. Connect the car adapter to the printer.



- 1 Car adapter

NOTE

A battery charger (option) and cradle (option) can also be used for charging.

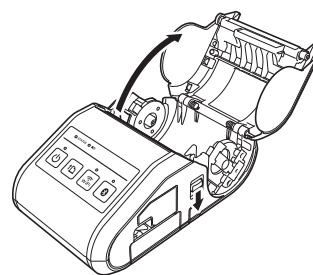
Printing Receipts

1. Install the printer driver and software downloaded from the web page. (See *Installing the Drivers* section.)
2. Make sure that the printer is powered using a charged battery.
3. Insert the RD Roll.
4. Press and hold the (Power) button to turn the printer on. The POWER indicator should be green.
5. Connect the printer to a computer or handheld device using either a USB cable, Bluetooth, or Wi-Fi.
6. Print receipts.

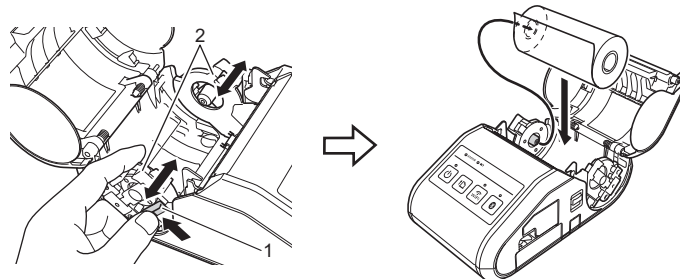
For details, see the Online User's Guide.

Inserting the RD Roll

1. Push and hold the cover open lever to open the RD Roll compartment cover.

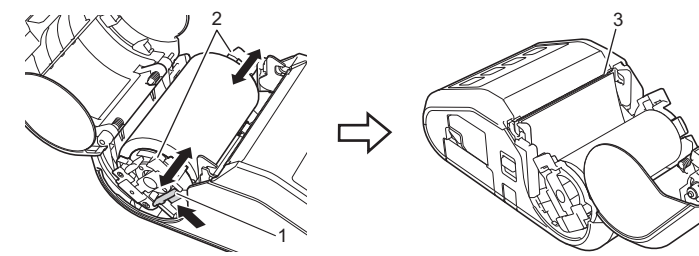


2. Open the roll guides by lifting up the roll guide adjustment lever (1) and pulling the roll guide (2) outwards. Insert an RD Roll into the RD Roll compartment with the roll feeding from the bottom as shown.



- 1 Roll guide adjustment lever
- 2 Roll guide

3. While lifting up the roll guide adjustment lever (1), push in both roll guides (2) to the roll width. Make sure that RD Roll is positioned straight in the RD Roll compartment.

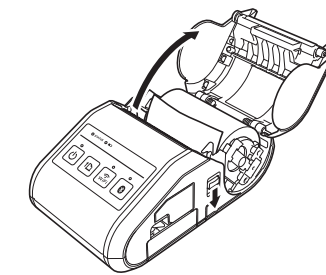


- 3 Tear bar

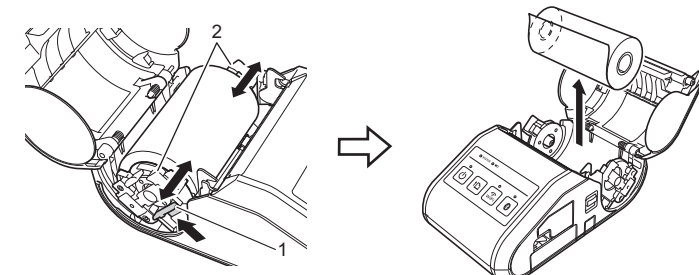
4. Close the RD Roll compartment by pressing down on the center of the cover until it latches.

Removing the RD Roll

1. Push the cover open lever, and then open the RD Roll compartment cover.



2. Open the roll guides by lifting up the roll guide adjustment lever (1) and pulling the roll guide (2) outwards. Remove the RD Roll.

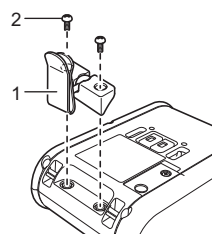


- 1 Roll guide adjustment lever
- 2 Roll guide

Attaching the Belt Clip

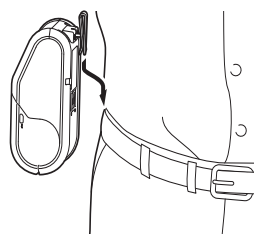
When using the printer outside the office, you can attach the included belt clip to the printer and secure the belt clip to your belt.

1. Secure the Phillips-head screws to the rear of the printer as shown.



- 1 Belt clip
- 2 Phillips screw

2. Attach the clip to your belt.



IMPORTANT

- Make sure that the belt clip is attached securely to the printer. There is a risk of injury if the belt clip is not attached securely and the printer falls.
- Make sure that the belt clip is attached securely to the wearer's belt. There is a risk of injury if the belt clip is not attached securely and the printer falls.

Installing the Drivers

Please install the printer driver and P-Touch Editor, software before using the printer.

1. Download the installer from the following web page. www.brother.com/inst/
2. Double-click the downloaded file to start the installation. Follow the on-screen instructions to complete the installation.

Wireless Network Connections

Bluetooth Connection

IMPORTANT

In order for the printer and your Bluetooth-equipped computer or adaptor to communicate, you must first pair the printer with the computer or handheld device using the Bluetooth management software.

1. Press and hold the (Power) button to turn the printer on, and then press the Bluetooth button.
2. Use your Bluetooth management software to discover the printer. Bluetooth communication is now available.

Wi-Fi Connection

IMPORTANT

In order for the printer and your network access point or router to communicate, you must first install the printer driver and Printer Setting Tool.

1. Press and hold the (Power) button to turn the printer on, and then press the Wi-Fi button. Wi-Fi communication is now available.

For details, see the Online User's Guide.

LED Indicators

- = Indicator is lit
- ◐ = Indicator is blinking
- ◑ = Indicator blinks 1 or 2 times in each color, then turns off
- = Indicator is lit or blinking in any color or pattern (off) = Indicator is off

G = Green
O = Orange
R = Red
B = Blue

Example: G ◐ = Indicator is blinking in green

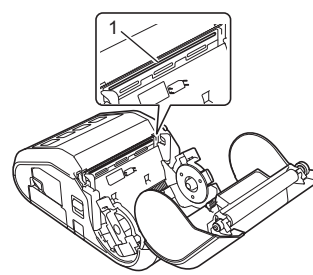
POWER	STATUS	Wi-Fi (Wi-Fi)	Bluetooth	Description
G ■	□	□	□	Power on
□	O ■	□	□	Roll cover open
G ◐	□	□	□	Receiving data Transferring data
G ■	R ◐	□	□	Error Print error Feed error Cover open error Communication error Image processing error Database search error No template error Access point search error Access point connection error Security error
R ◐	R ◐	(off)	(off)	Error Battery error Mass storage error
R ◐	R ◐	B ◐	B ◐	System error
□	□	B ◐ (Once every 3 seconds)	□	Wireless on, not connected
□	□	B ■	□	Wireless on, connected
□	□	B ◐ (Once every second)	□	Now setting WPS
□	□	□	B ■	Bluetooth on
□	□	□	B ◐ (Once every second)	Pairing with Bluetooth
O ■	(off)	B ■	B ■	Now resetting
O ■	(off)	B ■	B ■	Formatting complete (When [Print Data after being Printed] is set to [Erase])
O ◐	□	□	□	Now cooling
G ■	G ■	□	(off)	In mass storage mode
G ■	G ■	(off)	B ■	Processing file in mass storage mode
G ■	R ■	(off)	(off)	Initializing

(Battery)	Description
O ◐ (Once every second)	Battery needs recharging
O ◐ (Twice every 4 seconds)	Rechargeable battery power: low
O ◐ (Once every 4 seconds)	Rechargeable battery power: half
O ■	Charging
(off)	Rechargeable battery power: full Charging complete

Maintaining the Printer

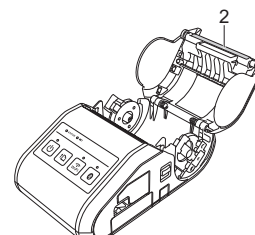
Maintenance of the printer may be carried out as required. However, some environments may require that maintenance must be done more frequently (e.g. in dusty conditions).

- Print Head Maintenance
Use a cotton swab to wipe the print head.



- 1 Print head

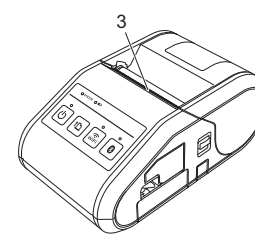
- Roller Maintenance
Use a piece of cellophane tape to remove dirt from the roller.



- 2 Roller

- Paper Outlet Maintenance

If the paper outlet becomes dirty, press and hold the (Power) button to turn the printer off and clean the paper outlet with a cloth slightly moistened with isopropyl alcohol.



- 3 Paper outlet

Printing the Printer Set-up Information

You can use the f (Feed) button to print a report that lists the following printer settings:

- Program version
- Printer usage history
- Missing dot test pattern
- Printer setting information
- List of transferred data
- Network setting information

NOTE

- You can use the Printer Setting Tool to set in advance which items will be printed.
- The node name appears in the Printer Settings. The default node name is "BRW/xxxxxxxxxx". ("xxxxxxxxxx" is based on your printer's MAC Address / Ethernet Address.)

1. Make sure that a roll of 3" (76.2 mm) receipt paper has been loaded and the RD Roll compartment cover is closed.
2. Turn on the printer.
3. Press and hold the f (Feed) button until the POWER indicator starts blinking in green. The settings will print.

NOTE

- To print the Printer Set-up Information, we recommend to use 3" (76.2 mm) receipt paper.
- This operation can also be performed using the Printer Setting Tool.

For details, see the Online User's Guide.

Internet Addresses

Brother Global Web Site: <http://www.brother.com>
Brother Developer Center: <http://www.brother.com/product/dev/>
For Frequently Asked Questions (FAQs), Product Support and Technical Questions, and Driver Updates and Utilities: <http://support.brother.com/>