

RJ-3150
User's Guide
English
Español

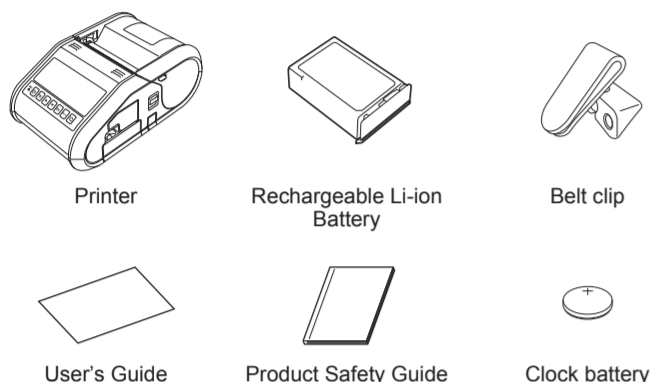
Thank you for purchasing the Brother RuggedJet RJ-3150 mobile printer. Read the included User's Guide and Product Safety Guide, before using the printer. For detailed operation instructions, see the Online User's Guide (Brother Solutions Center at <http://support.brother.com/>). We suggest that you keep these documents in a handy place for future reference. To download the latest manuals, please visit the Brother Solutions Center (<http://support.brother.com/>), where you can also download the latest drivers and utilities for your printer, read FAQs and troubleshooting tips or learn about special printing solutions.

Printed in China
LBD532001

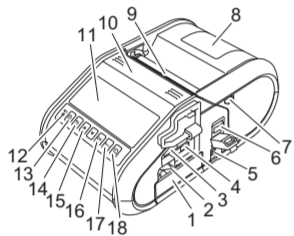


Unpacking the RJ-3150

Check that the package contains the following before using the printer.

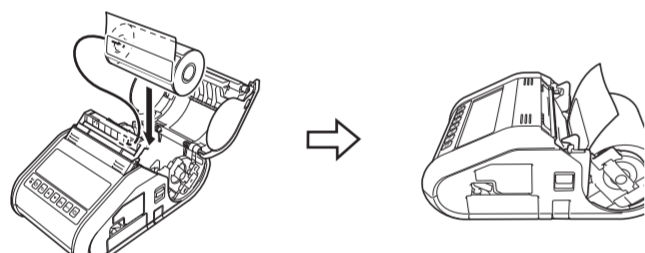


General Description



- 1 Battery compartment
- 2 Battery cover latch
- 3 USB host port
- 4 Mini-USB port
- 5 AC/DC connector
- 6 Cover open lever
- 7 Peeler latch
- 8 RD Roll compartment cover
- 9 Paper outlet
- 10 Label peeler
- 11 LCD
- 12 BATT (Battery) indicator
- 13 (Power) button (To turn the printer on/off)
- 14 CANCEL button
- 15 Cursor button (UP/DOWN)
- 16 OK button
- 17 Menu button
- 18 (Feed) button (To feed the paper or print the printer settings)

3. Peel off one label from the end of the RD Roll, and then insert the RD Roll so that it is positioned straight in the RD Roll compartment.

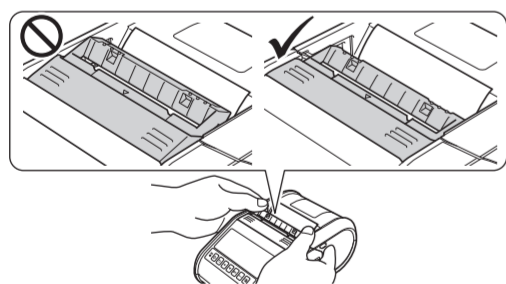


4. Close the RD Roll compartment cover. Make sure that the paper outlet is on top of the cover.



5. In order to remove any slack in the roll, lightly pull on the paper fed out of the paper outlet until no more can be pulled out.

6. Push both sides of the paper outlet until it clicks into place.

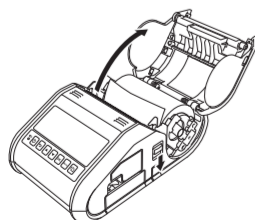


NOTE

To open the RD Roll compartment cover when the label peeler is set up, first release the peeler latches on both sides of the printer before pushing the cover open lever.

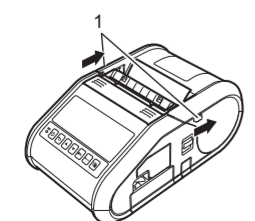
Removing the RD Roll

1. Push the cover open lever, and then open the RD Roll compartment cover.



NOTE

When you use the label peeler, first release the peeler latches on both sides of the printer before pushing the cover open lever.

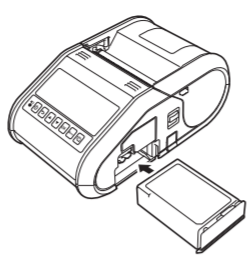


1 Peeler latch

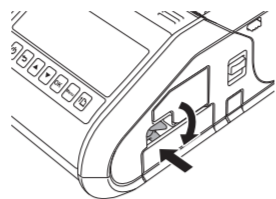
Using the Rechargeable Li-ion Battery

Installing the Rechargeable Li-ion Battery

1. Make sure that the cover latch is lifted up, and then insert the battery into the battery compartment with the battery cover attached to the battery. Make sure that the terminal end of the battery is facing inward.



2. With the battery inserted and while pushing the battery lightly, lower the cover latch until it clicks locking the battery in place.



Removing the Rechargeable Li-ion Battery

While pushing the battery lightly, lift the cover latch to unlock the battery, and then remove the battery.

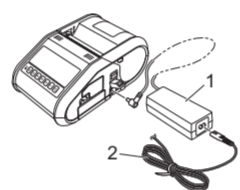
Charging the Rechargeable Li-ion Battery

1. Make sure that the printer is turned off. If the printer is turned on, press and hold the (Power) button to turn it off.
 2. Make sure that the rechargeable Li-ion battery is installed in the printer.
 3. Use the AC adapter and AC power cord to connect the printer to an AC power outlet (see Connecting to an AC Power Outlet (Optional)), or use the car adapter to connect the printer to a DC power outlet (see Connecting to a DC Power Outlet (Optional)).
 4. The battery indicator light is orange when the battery is charging. When the rechargeable Li-ion battery is fully charged, the battery indicator light turns off. Disconnect the AC adapter or car adapter from the battery's AC/DC connector.
- For details, see the Online User's Guide.

Connecting to an AC Power Outlet (Optional)

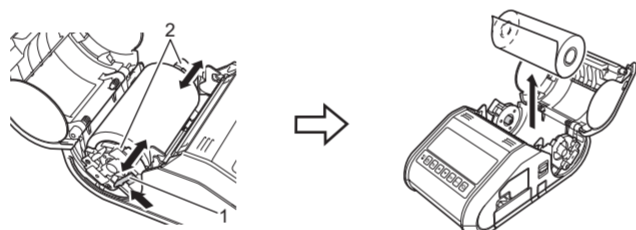
Connect the printer to a nearby AC power outlet to charge the rechargeable battery.

1. Connect the AC adapter to the printer.
2. Connect the AC power cord to the AC adapter.
3. Connect the AC power cord to a nearby AC power outlet (100 - 240 VAC, 50 - 60 Hz).



1 AC adapter
2 AC power cord

2. Open the roll guides by lifting up the roll guide adjustment lever (1) and pulling the roll guide (2) outwards. Remove the RD Roll.



1 Roll guide adjustment lever
2 Roll guide

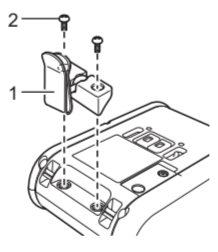
NOTE

When you use the label peeler, make sure that the backing paper does not become caught when removing the RD roll.

Attaching the Belt Clip

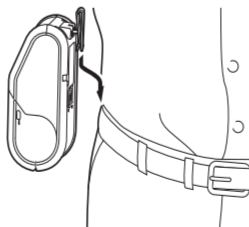
When using the printer outside the office, you can attach the included belt clip to the printer and secure the belt clip to your belt.

1. Secure the Phillips-head screws to the rear of the printer as shown.



1 Belt clip
2 Phillips screw

2. Attach the clip to your belt.



IMPORTANT

- Make sure that the belt clip is attached securely to the printer. There is a risk of injury if the belt clip is not attached securely and the printer falls.
- Make sure that the belt clip is attached securely to the wearer's belt. There is a risk of injury if the belt clip is not attached securely and the printer falls.

Installing the Drivers

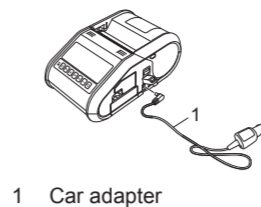
Please install the printer driver and P-touch Editor software before using the printer.

1. Download the installer from the following web page. www.brother.com/inst/
2. Double-click the downloaded file to start the installation. Follow the on-screen instructions to complete the installation.

Connecting to a DC Power Outlet (Optional)

Connect the printer to your vehicle's 12 V DC power outlet (cigarette lighter, etc.) to charge the rechargeable battery.

1. Connect the car adapter to the vehicle's 12 V DC power outlet.
2. Connect the car adapter to the printer.



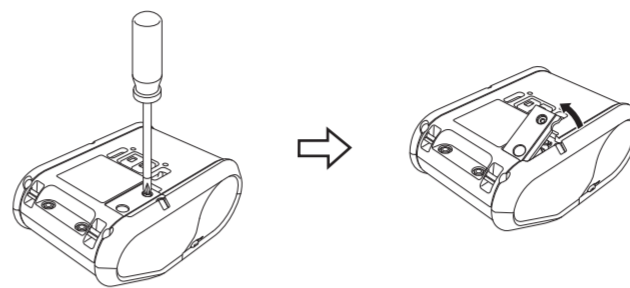
1 Car adapter

NOTE

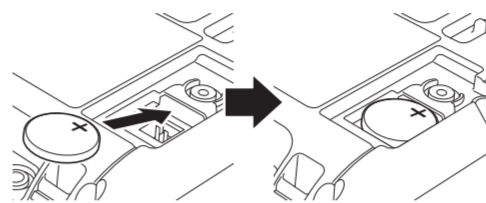
A battery charger (option) and cradle (option) can also be used for charging.

Setting the Clock Battery

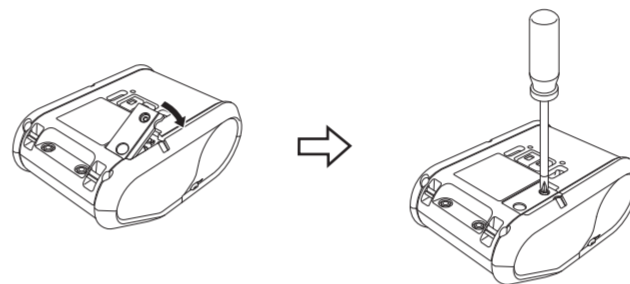
1. Open the battery cover using a cross point screwdriver.



2. Insert the supplied battery into the space for the battery, making sure that the battery is level and its positive side is facing up.



3. Close the battery cover using a cross point screwdriver.



Printing Receipts or Labels

1. Install the printer driver and software downloaded from the web page. (See *Installing the Drivers* section.)
2. Make sure that the printer is powered using a charged battery.
3. Turn the printer on. The POWER indicator should be green.
4. Connect the printer to a computer or handheld device using either a USB cable, Bluetooth, or Wi-Fi.
5. Insert the RD Roll.
6. Print receipts or labels.

For details, see the Online User's Guide.

Wireless Network Connections

Bluetooth Connection

IMPORTANT

In order for the printer and your Bluetooth-equipped computer or adapter to communicate, you must first pair the printer with the computer or handheld device using the Bluetooth management software.

1. Press the [Menu] button, use [▲] or [▼] to select the [Bluetooth] menu, and then press the [OK] button. Set [Bluetooth (On/OFF)] to [On].
2. Use your Bluetooth management software to discover the printer. Bluetooth communication is now available.

Wi-Fi Connection

IMPORTANT

In order for the printer and your network access point or router to communicate, you must first install the printer driver and Printer Setting Tool.

1. Press the [Menu] button, use [▲] or [▼] to select the [WLAN] menu, and then press the [OK] button. Set [WLAN (On/OFF)] to [On]. Wi-Fi communication is now available.

For details, see the Online User's Guide.

Battery Indicators

- = Indicator is lit
- ◐ = Indicator is blinking
- (off) = Indicator is off
- = Orange

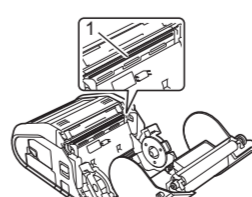
Example: ◐ = Indicator is blinking in orange

(Battery)	Description
◐ (Once every second)	Battery needs recharging
◐ (Twice every 4 seconds)	Rechargeable battery power: low
◐ (Once every 4 seconds)	Rechargeable battery power: half
■	Charging
(off)	Rechargeable battery power: full Charging complete

Maintaining the Printer

Maintenance of the printer may be carried out as required. However, some environments may require that maintenance must be done more frequently (e.g. in dusty conditions).

- Print Head Maintenance
Use a dry cotton swab to wipe the print head.



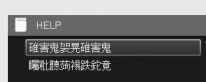
1 Print head

Inserting the RD Roll

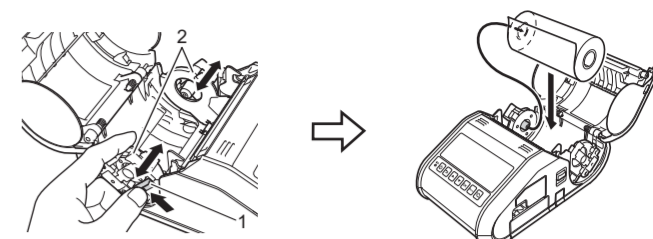
When Not Using the Label Peeler

NOTE

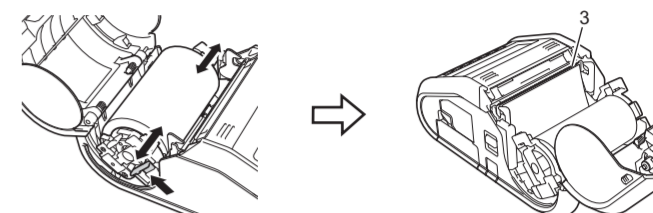
You can also view information about loading paper in Help. Open the RD Roll compartment cover, and press the Menu button on the printer.



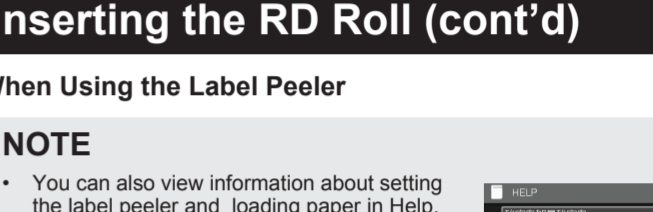
1. Push the cover open lever to open the RD Roll compartment cover.
2. Open the roll guides by lifting up the roll guide adjustment lever (1) and pulling the roll guide outwards. Insert an RD Roll into the RD Roll compartment with the labels feeding from the bottom as shown.



3. While lifting up the roll guide adjustment lever (1), push in both roll guides (2) to the roll width. Insert the RD Roll so that it is positioned straight in the RD Roll compartment.



4. Close the RD Roll compartment by pressing down on the center of the cover until it latches.

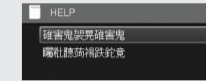


Inserting the RD Roll (cont'd)

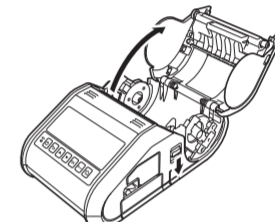
When Using the Label Peeler

NOTE

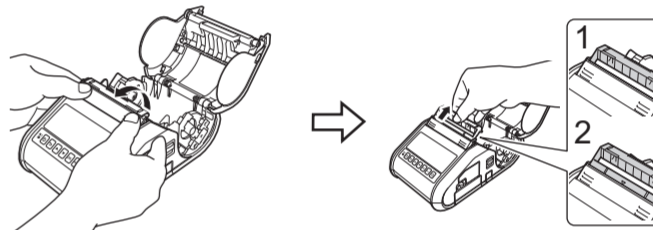
- You can also view information about setting the label peeler and loading paper in Help. Open the RD Roll compartment cover, and press the Menu button on the printer.
- A video on setting up the label peeler is available at the following address. <http://solutions.brother.com/movie/d532/>



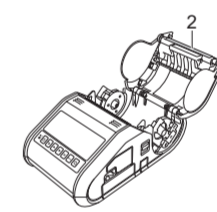
1. Push the cover open lever to open the RD Roll compartment cover.



2. Push both sides of the label peeler towards the rear of the printer. The peeler will spring up and away from the printer. Then, pull the peeler out fully away from the printer until the ▲ mark is visible as shown.

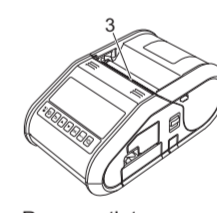


- Roller Maintenance
Use a piece of cellophane tape to remove dirt from the roller.



2 Roller

- Paper Outlet Maintenance
If adhesive accumulates at the paper outlet and media becomes jammed, clean the paper outlet with a cloth slightly moistened with isopropyl alcohol.



3 Paper outlet

Printing the Printer Set-up Information

You can use the (Feed) button to print a report that lists the following printer settings:

- Program version
- Printer usage history
- Missing dot test pattern
- Printer setting information
- List of transferred data
- Network setting information

NOTE

- You can use the Printer Setting Tool to set in advance which items will be printed.
- The node name appears in the Printer Settings. The default node name is "BRWxxxxxxxx". ("xxxxxxxx" is based on your printer's MAC Address / Ethernet Address.)

1. Make sure that a roll of 3" (76.2 mm) receipt paper has been loaded and the RD Roll compartment cover is closed.
2. Turn on the printer.
3. Press and hold the (Feed) button until the POWER indicator starts blinking in green. The settings will print.

NOTE

- To print the Printer Set-up Information, we recommend to use 3" (76.2 mm) receipt paper.
- This operation can also be performed using the Printer Setting Tool.

For details, see the Online User's Guide.

Internet Addresses

Brother Global Web Site: <http://www.brother.com>
Brother Developer Center: <http://www.brother.com/product/dev/>
For Frequently Asked Questions (FAQs), Product Support and Technical Questions, and Driver Updates and Utilities: <http://support.brother.com/>