

# User's Guide

Read this guide before you start using your P-touch labeler. Keep this guide in a handy place for future reference.

- A protective clear plastic sticker is placed over the top panel during manufacturing and shipping. This sticker should be removed prior to use. When printing multiple copies of a label or using the numbering function printing, the P-touch labeler will not detect the end of the tape cassette and will continue operating. When using Heat Shrink Tube, the printing area will be smaller than when using normal tape. If you connect a mobile device to the P-touch labeler using the NFC function without installing a specialized application, the Apps section of Google Play can be displayed on your mobile device automatically. You may be charged a communication fee for this service.

**CAUTION** RISK OF EXPLOSION IF BATTERY IS REPLACED BY AN INCORRECT TYPE. DISPOSE OF USED BATTERIES ACCORDING TO THE INSTRUCTIONS.

**Open Source Licensing Remarks** This product includes open-source software. To view the open source licensing remarks, please go to the manual download selection on your model's home page of Brother Solutions Center at <http://solutions.brother.com/>.

**Federal Communications Commission (FCC) Declaration of Conformity (For USA Only)** Responsible Party: Brother Mobile Solutions, Inc. 100 Technology Drive Suite 250A Broomfield, CO 80021 U.S.A. Tel: (303) 460-1800

Product Name: Brother P-touch Electronic Labeling System Model Number: PT-P750W This device complies with Part 15 of the FCC Rules. Operation is subject to the following two conditions: (1) this device may not cause harmful interference, and (2) this device must accept any interference received, including interference that may cause undesired operation. PT-P750W is equipped with FCC ID:B3Q8VA652.

This equipment has been tested and found to comply with the limits for a Class B digital device, pursuant to Part 15 of the FCC Rules. These limits are designed to provide the reasonable protection against harmful interference in a residential installation. This equipment generates, uses and can radiate radio frequency energy and, if not installed and used in accordance with the instructions, may cause harmful interference to radio communications. However, there is no guarantee that interference will not occur in a particular installation. If this equipment does cause harmful interference to radio or television reception, which can be determined by turning the equipment off and on, the user is encouraged to try to correct the interference by one or more of the following measures:

- Reorient or relocate the receiving antenna.
- Increase the separation between the equipment and receiver.
- Connect the equipment into an outlet on a circuit different from that to which the receiver is connected.
- Consult the dealer or an experienced radio/TV technician for help.
- This transmitter must not be co-located or operated in conjunction with any other antenna or transmitter.

**Important** The enclosed interface cable should be used in order to ensure compliance with the limits for a Class B digital device. Changes or modifications not expressly approved by Brother Industries, Ltd. could void the user's authority to operate the equipment. \* In case WLAN interface is in use. CAUTION: To maintain compliance with FCC's RF exposure guidelines, use only the supplied antenna. Unauthorized antenna, modification, or attachments could damage the transmitter and may violate FCC regulations.

The available scientific evidence does not show that any health problems are associated with using low power wireless devices. There is no proof, however, that the low power wireless devices are absolutely safe. Low power Wireless devices emit low levels of radio frequency energy (RF) in the microwave range while being used. Whereas high levels of RF can produce health effects (by heating tissue), exposure of low-level RF that does not produce heating effects causes no known adverse health effects. Many studies of low-level RF exposures have not found any biological effects. Some studies have suggested that some biological effects might occur, but such findings have not been confirmed by additional research. PT-P750W has been tested and found to comply with FCC radiation exposure limits set forth for an uncontrolled environment and meets the FCC radio frequency (RF) Exposure Guidelines.

**Trademarks and Copyrights** BROTHER is either a trademark or a registered trademark of Brother Industries, Ltd. P-TOUCH is a trademark or registered trademark of Brother Industries, Ltd. © 2014 Brother Industries, Ltd. All rights reserved. Microsoft, Windows Vista, Windows Server and Windows are either registered trademarks or trademarks of Microsoft Corp. in the United States and/or other countries. Apple, Macintosh, Mac OS, iPhone, iPad and iPod are trademarks of Apple Inc., registered in the United States and other countries. The names of other software or products used in this document are trademarks or registered trademarks of the respective companies that developed them. Wi-Fi and Wi-Fi Alliance are registered trademarks of the Wi-Fi Alliance. Each company whose software title is mentioned in this manual has a Software License Agreement specific to its proprietary programs. Any trade names and product names of companies appearing on Brother products, related documents and any other materials are all trademarks or registered trademarks of those respective companies.

## International ENERGY STAR® Compliance Statement

The purpose of the International ENERGY STAR® Program is to promote the development and popularization of energy-efficient office equipment. As an ENERGY STAR® Partner, Brother Industries, Ltd. has determined that this product meets the ENERGY STAR® guidelines for energy efficiency.



## Rechargeable Li-ion Battery (Li-ion battery optional with the PT-P750W)

**DANGER** Indicates an imminently hazardous situation which, if the product is handled without following the warnings and instructions, will result in death or serious injuries.

Carefully observe the following precautions for the rechargeable Li-ion battery (hereafter referred to as "rechargeable battery"). If these precautions are not followed, overheating, leaking, or cracks in the battery may result in an electrical short, explosion, smoke, fire, electric shock, injury to yourself or others, or damage to the product or other property.

- Use the rechargeable battery only for its intended purpose. The P-touch labeler and rechargeable battery are designed to function exclusively with each other. Do not insert a different rechargeable battery into the P-touch labeler or insert the rechargeable battery into a different P-touch labeler, otherwise fire or damage may result.
- To charge the rechargeable battery, insert the rechargeable battery into the P-touch labeler, and then use the AC adapter designed specifically for this P-touch labeler.
- DO NOT charge the rechargeable battery near a fire or in direct sunlight. This could activate the protection circuitry, which is designed to prevent danger from high heat. Activation of the protection circuitry could cause charging to stop, charging to occur with excessive current or voltage if the protection circuitry fails, or an abnormal chemical reaction within the battery.
- When charging the rechargeable battery, use only a battery charger designed specifically for the rechargeable battery.
- DO NOT allow wires or other metal objects to come into contact with the terminals of the rechargeable battery. Do not carry or store the rechargeable battery with metal objects such as necklaces or hairpins. This could cause an electrical short, and cause metal objects to overheat.
- DO NOT use or leave the rechargeable battery near fire, heaters, or other high temperature (above 176°F/80°C) locations.
- DO NOT allow the rechargeable battery to come into contact with or to be immersed in water.
- DO NOT use the rechargeable battery in corrosive environments, such as areas where salty air, salt water, acids, alkalis, corrosive gases, chemicals, or any corrosive liquid are present.
- DO NOT use the rechargeable battery if it is damaged or leaking.
- DO NOT directly solder any connections to the rechargeable battery. This could cause internal insulation to melt, gas to be emitted, or safety mechanisms to fail.
- DO NOT use the rechargeable battery with the polarity (+/-) reversed. Check the orientation of the rechargeable battery before inserting it, and do not try to force the rechargeable battery into the P-touch labeler. Charging the rechargeable battery with the polarity reversed could cause an abnormal chemical reaction within the rechargeable battery or abnormal current flow during discharge.
- DO NOT directly connect the rechargeable battery to a household electrical supply.
- Liquid (electrolyte) leaking from the P-touch labeler or rechargeable battery may indicate that the rechargeable battery is damaged. If the rechargeable battery leaks, immediately stop using the P-touch labeler, unplug the AC adapter, and isolate the P-touch labeler by putting it in a bag. Do not touch the electrolyte. If electrolyte gets in the eyes, do not rub the eyes. Immediately rinse liberally with tap water or other clean water and seek the advice of a medical professional. If left alone, the electrolyte could cause eye damage. If electrolyte contacts your skin or clothing, immediately rinse them with water.
- DO NOT put the rechargeable battery, or a P-touch labeler with the rechargeable battery installed, into a microwave oven or a high pressure container.
- DO NOT leave the rechargeable battery without power in the main unit for a long period of time. This could shorten the life of the rechargeable battery or lead to an electrical short.
- If the P-touch labeler can only be used for a short period of time, even though the rechargeable battery is fully charged, the rechargeable battery may have reached the end of its service life. Replace the rechargeable battery with a new one. When removing and replacing the rechargeable battery, cover the terminals of the old rechargeable battery with tape to avoid creating a short in the battery.
- DO NOT disassemble, modify, or attempt to repair the rechargeable battery.
- DO NOT dispose of the rechargeable battery in fire or cause it to overheat. This could cause the internal insulation to melt, gas to be emitted, or safety mechanisms to fail. Additionally, the electrolyte solution could catch fire.
- DO NOT puncture the rechargeable battery with any objects, subject it to heavy shocks or throw it. Damage to the rechargeable battery's protection circuit could cause the rechargeable battery to be recharged at an abnormal current/voltage or cause an abnormal chemical reaction within the rechargeable battery.
- DO NOT incinerate the rechargeable battery or dispose of it with household waste.

- Tips on Using the Rechargeable Li-ion Battery** Charge the rechargeable Li-ion battery before use. Do not use it before it is charged. The rechargeable Li-ion battery charging can take place in 41°F-95°F (5°C-35°C) environments. Charge the rechargeable Li-ion battery in an environment in this temperature range. If the surrounding temperature is out of this range, the rechargeable Li-ion battery will not be charged, and the battery indicator will remain lit.

- If the P-touch labeler is used when both the rechargeable Li-ion battery is installed and the AC adapter is connected, the battery indicator may turn off and charging may stop even if the rechargeable Li-ion battery has not been fully charged.

- Rechargeable Li-ion Battery Characteristics** Understanding the properties of the rechargeable Li-ion battery will allow you to optimize its usage. Using or storing the rechargeable Li-ion battery in a location exposed to high or low temperatures may accelerate its deterioration. In particular, using a rechargeable Li-ion battery with a high charge (charged 90% or more) in a location exposed to high temperatures will considerably accelerate battery deterioration. Using the P-touch labeler while the rechargeable Li-ion battery is installed and charging may accelerate the battery's deterioration. If using the P-touch labeler when the rechargeable Li-ion battery is installed, disconnect the AC adapter. If the P-touch labeler will not be used for longer than one month, remove the rechargeable Li-ion battery from the P-touch labeler, and then store the battery in a cool place away from direct sunlight. If the rechargeable Li-ion battery will not be used for a long period of time, we recommend charging it every 6 months. If you touch a part of the device while a Li-ion battery is charging, the device may feel warm. This is normal, and the device may be used safely. If the P-touch labeler becomes extremely hot, discontinue use.

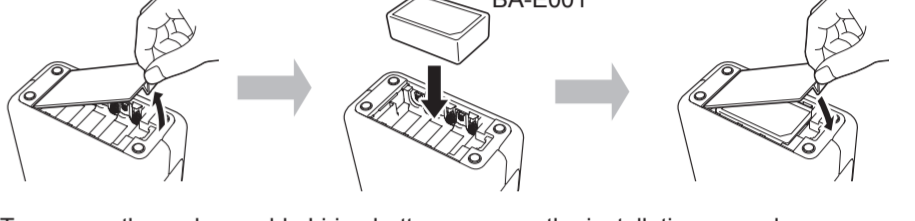
- Rechargeable Li-ion Battery Specifications** Charging time: Approximately 6 hours when charged by a AC adapter (AD-E001). Nominal Voltage: DC 7.2 V Nominal Capacity: 1850 mAh

Surroundings temperature range		
Charge	104°F/40°C	
Standard discharge current 1.9 A	140°F/60°C	
Maximum discharge current 2.5 A	140°F/60°C	
Shipped battery	Less than 1 month	-4°F - 122°F/20°C - 50°C
	Less than 3 month	-4°F - 104°F/20°C - 40°C
	Less than 1 year	-4°F - 68°F/20°C - 20°C

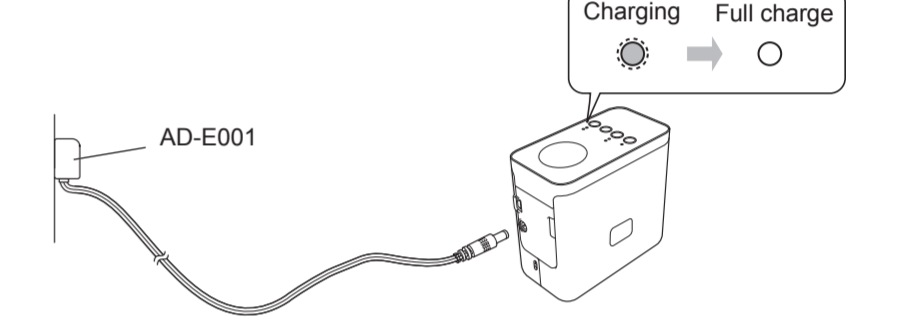
Charging Parameters	
Maximum charging voltage	8.2 Vdc
Maximum charging current	1330 mA

- P-touch labeler** Charging current: 800 mA Charging voltage: up to 8.2 V (Maximum)

### Installing the Rechargeable Li-ion Battery



**Charging the Rechargeable Li-ion Battery** The rechargeable Li-ion battery can be charged while it is installed in the P-touch labeler. Perform the following procedure to charge the rechargeable Li-ion battery.



**NOTE** Up to 6 hours is needed to fully charge the rechargeable Li-ion battery.

### Stopping the Rechargeable Li-ion Battery Charging

To stop the rechargeable Li-ion battery from charging, disconnect the AC adapter cord.

**ATTENTION: (For USA and Canada)** The Lithium ion battery you have purchased is recyclable. At the end of its useful life, under various state and local laws, it is illegal to dispose of this battery into your municipal waste stream. Please call 1-800-8-BATTERY

# User's Guide

Read this guide before you start using your P-touch labeler. Keep this guide in a handy place for future reference.

**Brother Support website** support.brother.com/g/d/d5p2/ Please visit our Support website. You can find following information: Software download Manuals/Documents Frequently Asked Questions (Troubleshooting, Useful tips on using printer) Consumable information and the latest OS compatibility information. You can also see setup steps on the website. Click the Getting ready to use your printer. link in the "information" section.

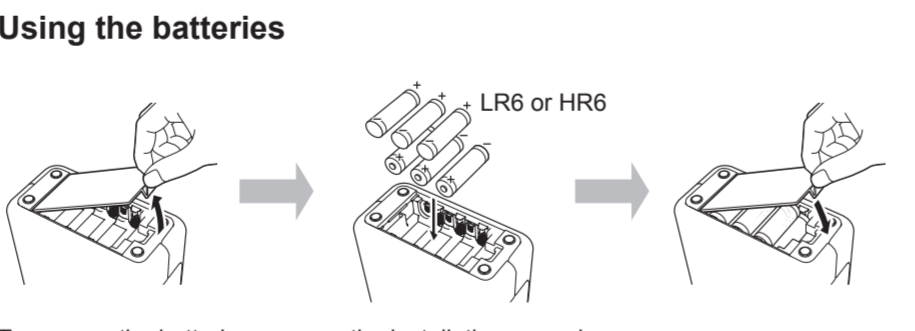
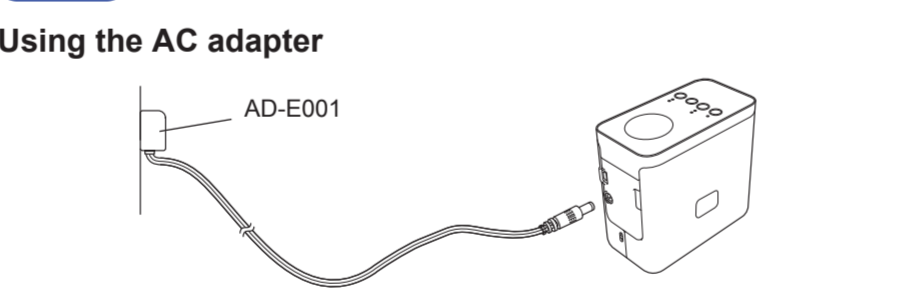
The contents of this website are subject to change without notice.

## 1 Unpacking the PT-P750W and Parts Description

Check that the package contains the following before using the P-touch labeler. If any item is missing or damaged, contact your Brother reseller.

- PT-P750W AC adapter (AD-E001) USB cable Starter tape cassette
- 1 Top panel 8 Feed & Cut button 15 Cassette cover
- 2 Editor Lite lamp 9 Status lamp 16 NFC tag
- 3 Editor Lite button 10 Battery lamp 17 Release lever
- 4 Wireless mode button 11 Power button 18 Print head
- 5 Tape exit slot 12 Battery cover 19 Tape cutter
- 6 Wi-Fi lamp 13 Mini-USB port 20 Cutter blade
- 7 NFC lamp 14 AC adapter connector

## 3 Connecting the Power Supply



**CAUTION** Remove the batteries if you do not intend to use the P-touch labeling system for an extended period of time. Dispose of the battery at an appropriate collection point, not in the general waste stream. In addition, be sure to observe all applicable federal, state, and local regulations. When storing or discarding the battery, wrap it (for example with cellophane tape), to prevent it from short-circuiting. (Battery insulation example) 1. Cellophane tape 2. Alkaline or Ni-MH battery

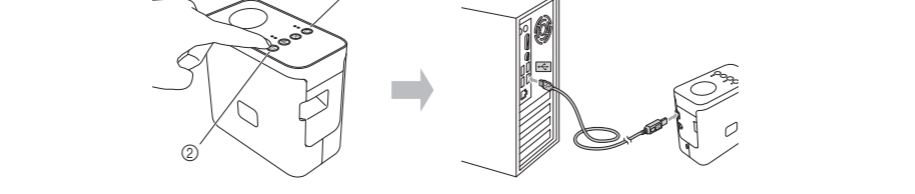
## 4 Turning the P-touch labeler On or Off

On: Press the Power button. Off: Press and hold the Power button until the Status lamp is lit in orange.

**NOTE** When turning the P-touch off, keep the AC adapter connected or the batteries installed until the Status lamp goes off.

## 5 Creating a Label using P-touch Editor Lite

- Turn on the P-touch labeler (1), then press and hold down the Editor Lite button until the green Editor Lite lamp lights up (2). Connect the USB cable to the computer and PT-P750W.



**NOTE** If you are connecting the P-touch labeler via a USB hub, it may not be detected correctly.

- After the USB cable is connected, a dialog box appears on the computer display. (The following screens may differ depending on the operating system on your computer.)

**For Windows Vista®** Click [P-touch Editor Lite].

**For Windows® 7** Click [Open folder to view files], and then double-click [PTLITE10].



**For Windows® 8/ Windows® 8.1** On the [Start] screen, click [PT-P750W], [Open folder to view files], and then double-click [PTLITE10].



**For Mac OS X v10.7.5/10.8.x./10.9.x** Double-click [PT-P750W] on the desktop and the [P-touch Editor Lite] application icon.



**NOTE** If you do not see the dialog box, it may be hidden behind an open software program window. Minimize all windows to show the dialog box. For details on using P-touch Editor Lite, visit the Brother Solutions Center.

### How to Disconnect the P-touch Labeler

- Exit P-touch Editor Lite by clicking on the [X] in the top right corner of the window if using P-touch Editor Lite.
- To disconnect the P-touch labeler, click the icon in the computer's task bar (Windows), (Mac OS), or (Linux).
- Click [Safely remove USB Mass Storage Device].
- When the message indicating that the device can be safely removed is displayed, turn off the P-touch labeler and disconnect the USB cable.

### For Macintosh

- Exit P-touch Editor Lite by clicking on the red button in the top left corner of the window, if using the P-touch Editor Lite.
- Select [Eject] from the Context menu. Drag and drop it in the Trash.
- When a message indicating that the device can be safely removed is displayed, turn off the P-touch labeler and disconnect the USB cable.

### Brother iPrint&Label

Brother iPrint&Label allows you to use features of your Brother machine directly from your mobile device, without using a computer.

Simply search for "Brother iPrint&Label" in the App Store or Google Play.

### Accessories

Accessories	
Tape cassette	Brother TZe tape (width) 0.13" (3.5 mm), 0.23" (6 mm), 0.35" (9 mm), 0.47" (12 mm), 0.70" (18 mm), 0.94" (24 mm)
AC Adapter	AD-E001
Rechargeable Li-ion Battery	BA-E001

Please see the Brother Solutions Center (support.brother.com/) for the latest OS compatibility information.

## 6 Wireless Setup, Downloading P-touch Editor, and Printer Driver

www.brother.com/inst/ More advanced editing functions are available by downloading the printer driver and P-touch Editor from our support site, and installing them.

Features of P-touch Editor: Makes it easy for anyone to create a wide variety of custom labels in complex layouts by using fonts, templates, and clip art.

### Definition of the LED Lamp

The Status lamp on the P-touch labeler indicates the current operating condition.

Lamp	Condition	
Wi-Fi	Green lamp is lit	Connected wirelessly.
	Green lamp is flashing	Not connected wirelessly.
	Not lit	The Wireless Direct mode is disabled (connections cannot be made).
NFC	Green lamp is lit	The Wireless Direct mode is enabled (connections can be made).
	Green lamp is lit→Goes off briefly	An NFC-compatible device was placed near the P-touch labeler (NFC tag data was sent).
	Green lamp is flashing	The Wireless Direct settings are being configured (the user is connecting a device).
STATUS	Green lamp is lit	Power is ON.
	Green lamp is flashing	Receiving data from the computer. Transferring data.
	Orange lamp is lit	The cassette cover is open. Close the cassette cover correctly. Starting the reset procedure, or the Feed & Cut button was pressed during the reset procedure. For details on resetting the P-touch labeler, see "How to Reset the P-touch Labeler".
	Orange lamp is flashing	Cooling (Wait for the temperature to cool down) Reset in progress. For details on resetting the P-touch labeler, see "How to Reset the P-touch Labeler".
	Red lamp is lit	The P-touch labeler is booting.
	Red lamp is flashing	Indicates one of the following errors. Red lamp flashes for 0.9 second intervals: No tape cassette. Incorrect tape cassette installed. Incompatible tape cassette installed. The cassette cover was opened during printing. Transmission error. Overheating error. Cutter error. Red lamp flashes for 0.3 second intervals: System error.
Battery	Not lit	Charging is complete. The battery is fully charged.
	Orange lamp is lit	Charging.
	Orange lamp is flashing	Orange lamp flashes slowly: The remaining battery level is half or low (the lamp flashes faster as the remaining battery level decreases). Orange lamp flashes for 0.5 second intervals: Charge the battery.

**How to Reset the P-touch Labeler** With the P-touch labeler off, press and hold the Feed & Cut button while holding down the Power button. When the Editor Lite lamp starts flashing and the Status lamp lights orange, press the Feed & Cut button six times while continuing to hold down the Power button. The P-touch labeler will be reset to the factory settings.

### Important Information

Should you have questions, or need information about your Brother product, we have a variety of support options for you to choose from:

USA-Customer Service Telephone: 1-877-BROTHER (1-877-276-8437) Fax: 1-901-379-1210 Website: www.brother-usa.com Supplies/Accessories www.brothermall.com or 1-877-552-6255