

# PA SPEAKER



# Column Speaker

Inter-m column speakers provide a clean and dedicated design with rich sound quality and are used for indoor/outdoor announcement and BGM. A variety of line-ups can be easily adopted in any type of user environment depending on power and size

## CS-SERIES

- High quality sound
- Simple and unique design
- Easy and time saving installation
- Angle adjustment by mounting bracket
- Speaker terminal (800 series)



CS-410/420/430/440/510/520/530/540



CS-810/820/830/840



CU-410/420/430/440

## CU-400/500 SERIES

- High quality sound
- Simple design with rounded corners and edges
- Easy and time saving installation
- Angle adjustment by mounting bracket



CU-510/520/530/540

## CU-900 SERIES

- Top quality tweeter is used
- Detail and rich sound quality
- Strong aluminum frame
- Easy and time saving installation
- Angle adjustment by mounting bracket
- Speaker terminal



CU-910(V)/920(V)/930(V)/940(V)/920HV/940HV



Inter-m ceiling speakers provide a natural and smooth sound with a variety of mounting and fit to any places that announcements and BGM required such as buildings, apartments, hotels and etc. It has variety of line-up from 1W APT series to 2way type high powered speaker.

# Ceiling Speaker

## APT SERIES

- Clean and clear sound reproduction
- A design harmonized with interior decoration
- Easy installation on ceiling or wall



APT-01A



APT-01C/03C



APT-01R



APT-01W/03W

## CS SERIES

- High quality sound
- Easy installation on the ceiling
- Multi-tap for different setting



CS-03/03A/05 CS-20/30/80  
CS-3/6/12 CS-10/44/45



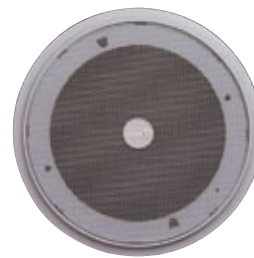
CS-10/44/45

## MS SERIES

- High quality sound
- Installation can be done without any tool
- Solid structure and material



MS-03A



MS-15/30



# Wall Speaker

Inter-M wall speakers are ideal for BGM playback and also offer precise voice reproduction. Our new articulated mounting bracket offers ease of installation with precision speaker orientation.



## IWS-10(I/B)

- High quality speaker unit
- Stylish and sleek design wall speaker
- A design adopted in modern sense



## SWS-3/10(I/B)

- High quality speaker unit produce detail and rich sound
- Stylish and sleek design wall speaker
- Harmonized with general structure when installed

## WS-203(I/B)/210(I/B)/230(I/B)

- High quality speaker unit
- Stylish and sleek design
- Easy installation
- Outdoor speaker
- High reliability



## CF-60/120(B/W)

- A outstanding design harmonized with interior decoration
- A coner design considering the spatial arrangement
- Built-in switchable impedance matching transformer
- 2 way speaker



Inter-M surface mounted speakers are manufactured using high-quality drivers and components. Our custom design and tuned crossover network ensures a smooth frequency responses and maximizes the SPL of the High-frequency and Low-frequency drivers.

# Surface Mounted Speaker



FS-30N/60N/100N/52N

## FS-30N/60N/100N

- High quality sound
- Dual circuit with high and low impedance
- Screw terminal for speaker line
- High quality transformer for long distance operation
- High-strength ABS Injection
- Mounting bracket included
- Safety ring included

## GS-50N

- High quality sound
- Dual circuit with high and low impedance
- Screw terminal for speaker line
- High quality transformer for long distance operation
- High-strength abs injection
- Mounting bracket included
- Safety ring included



GS-50N

## CI-40(T)/60(T)

- Optimized sound quality on music playback & voice intelligibility
- Compact vented enclosure
- High quality transformer
- Circuit Protection
- Articulated Mounting Bracket
- Safety ring included



CI-40(T)/60(T)



# Horn Speaker

Inter-m horn speakers are commonly installed in commercial building, factories, schools, public areas, civic centers and so on because it has excellent intelligibility & Loudness, High directivity, Good reliability.



CH-522/532

## CH-522/532

- High sound pressure and straightness
- Wide frequency range with remarkable vocal clarity
- Indoor or outdoor use
- Wide range of angle adjustment

## HS-20/30/50/20RT/30RT/40RT

- High sound pressure and straightness
- Wide frequency range with remarkable vocal clarity
- Easy installation
- Highly reliable and high power horn driver unit
- Rated input and output sound pressure
- Size and weight



HS-20/30/50

HS-20RT/30RT/40RT

## DRIVER UNIT

- High reliability and high powered HORN DRIVER UNIT
- Rated power and SPL
  - DU-30T : 30W, 8Ω/330Ω/660Ω, 110dB
  - DU-40T : 40W, 8Ω/250Ω/500Ω, 110dB
  - DU-50 : 50W 8Ω, 113dB
  - DU-75 : 75W 8Ω, 114dB
  - DU-100 : 100W 8Ω, 113dB
- Size and Weight
  - SH-317 : 317(W) x 205(H) x 290(D)mm
  - DU-30T : 114(Ø) x 120mm, 1.55Kg
  - DU-40T : 114(Ø) x 120mm, 1.75Kg
  - DU-50 : 120(Ø) x 90mm, 2Kg
  - DU-75 : 120(Ø) x 92mm, 2.65Kg
  - DU-100 : 117(Ø) x 102mm, 3.5Kg



SH-317



DU-30T



DU-40T



DU-50



DU-75



DU-100



SW-2200/2300

## SW-2200/2300

- Exclusive material for speaker of sound system
- Inner conductor size
- Number of core wire
- Inner wire can be identified through the transparent insulator

## FSB-3

- Angle adjustment (L/R, Up/Down)
- SOLID fixed ANGLE adjustment
- Safety ring included
- Screws included



FSB-3

## FSB-1/FSB-2

- Small speaker mounting bracket
- Angle adjustment (L/R, Up/Down)



FSB-1



FSB-2

## SB-1/2

- Stand for small and large speaker
- SHORT/LONG TYPE
- Single angle of beam spread
- Easily mounting on the wall or ceiling



SB-1



SB-2

## TSS-1

- Stand for small and large speaker
- Maintain stability as a tripod



TSS-1

# PA Speakers Specifications



Speaker type	Model	Type	Rated Power	Frequency Response	SPL	Impedance	Dimension(mm) <WxHxD>
Column Speaker	CS-410	1 Way	10W	180Hz - 12KHz	91dB	1K $\Omega$ /2K $\Omega$	159x300x115
	CS-420		20W		94dB	500 $\Omega$ /1K $\Omega$	159x400x115
	CS-430		30W		95dB	330 $\Omega$ /660K $\Omega$	159x500x115
	CS-440		40W		97dB	250 $\Omega$ /500 $\Omega$	159x600x115
	CS-510		10W	180Hz - 12KHz	89dB	1K $\Omega$ /2K $\Omega$	159x300x115
	CS-520		20W		92dB	500 $\Omega$ /1K $\Omega$	159x400x115
	CS-530		30W		93dB	330 $\Omega$ /660K $\Omega$	159x500x115
	CS-540		40W		95dB	250 $\Omega$ /500 $\Omega$	159x600x115
	CS-810	2 Way	10W	150Hz - 20KHz	90dB	1K $\Omega$ /2K $\Omega$	149x310x124
	CS-820		20W		93dB	500 $\Omega$ /1K $\Omega$	149x420x124
	CS-830		30W		94dB	330 $\Omega$ /660K $\Omega$	149x530x124
	CS-840		40W		96dB	250 $\Omega$ /500 $\Omega$	149x640x124
	CU-410	1 Way	10W	180Hz - 14KHz	91dB	1K $\Omega$ /2K $\Omega$	156x300x129
	CU-420		20W		94dB	500 $\Omega$ /1K $\Omega$	156x400x129
	CU-430		30W		95dB	330 $\Omega$ /660K $\Omega$	156x500x129
	CU-440		40W		97dB	250 $\Omega$ /500 $\Omega$	156x600x129
	CU-510		10W		91dB	1K $\Omega$ /2K $\Omega$	156x300x129
	CU-520		20W		94dB	500 $\Omega$ /1K $\Omega$	156x400x129
	CU-530		30W		95dB	330 $\Omega$ /660K $\Omega$	156x500x129
	CU-540		40W		97dB	250 $\Omega$ /500 $\Omega$	156x600x129
	CU-910(V)	2 Way	10W	220Hz-15KHz/ 220Hz-18KHz(V)	87dB/88dB(V)	1K $\Omega$ /2K $\Omega$	104x290x86
	CU-920(V)		20W		89dB/91dB(V)	500 $\Omega$ /1K $\Omega$	104x400x86
	CU-930(V)		30W		91dB	330 $\Omega$ /660K $\Omega$	104x490x86
	CU-940(V)		40W		91dB	250 $\Omega$ /500 $\Omega$	104x580x86
CU-920H	20W		180Hz-15KHz	86dB	500 $\Omega$ /1K $\Omega$	104x400x86	
CU-920HV			180Hz-18KHz	87dB			
CU-940H			180Hz-15KHz	87dB			
CU-940HV			180Hz-18KHz	88dB			
Ceiling Speaker	APT-01A(K)	1 Way	1W	300Hz-16KHz	82dB	8 $\Omega$ /10K $\Omega$	120x120x15
	APT-01C		1W	260Hz-10KHz	85dB	10K $\Omega$	41( $\phi$ )x120(D)
	APT-03C		3W	260Hz-12KHz	86dB	3.3K $\Omega$	41( $\phi$ )x119(D)
	APT-01R		1W	260Hz-10KHz	84dB	10K $\Omega$	152( $\phi$ )x55(D)
	APT-01W		1W	260Hz-10KHz	85dB	10K $\Omega$	120x120x50
	APT-03W		3W	260Hz-12KHz	86dB	3.3K $\Omega$	
	CS-03		3W	100Hz-15KHz	90dB	3.3K $\Omega$ /5K $\Omega$ /10K $\Omega$	228( $\phi$ )x96(D)
	CS-03A		3W	150Hz-15KHz			227( $\phi$ )x100(D)
	CS-05	5W	150Hz-14KHz	92dB	2K $\Omega$ /4K $\Omega$ /8K $\Omega$	230( $\phi$ )x180(D)	
	CS-20	20W	200Hz-20KHz	88dB	500 $\Omega$ /1K $\Omega$ /2K $\Omega$		
	CS-30	30W		90dB	330 $\Omega$ /500 $\Omega$ /1K $\Omega$		
	CS-80	80W		88dB	125 $\Omega$ /250 $\Omega$ /500 $\Omega$		
	CS-3	3W	250Hz-15KHz	88dB	3.3K $\Omega$ /5K $\Omega$ /10K $\Omega$	230( $\phi$ )x100(D)	
	CS-6	6W					1.7K $\Omega$ /4K $\Omega$ /8K $\Omega$
	CS-12	12W					89dB
	CS-10	10W	120Hz-10KHz	92dB	1K $\Omega$ /2K $\Omega$	303x303x95	
	CS-44	1 Way	3W	180Hz-10KHz	90dB		3.3K $\Omega$ /5K $\Omega$ /10K $\Omega$
	CS-55		3W	110Hz-14KHz			
	MS-03A	3W	110Hz-10KHz	90dB	3.3K $\Omega$ /5K $\Omega$ /10K $\Omega$		246x174x110
	MS-15	15W	250Hz-17KHz	97dB	660 $\Omega$ /1K $\Omega$ /2K $\Omega$		286x200x130
MS-30	30W	220Hz-18KHz	85dB	330 $\Omega$ /500 $\Omega$ /1K $\Omega$	226x327x163		
CF-60	2 Way	60W				120Hz-20KHz	8 $\Omega$ /166 $\Omega$ /333 $\Omega$ /660 $\Omega$
CF-120		120W	8 $\Omega$ /83 $\Omega$ /166 $\Omega$ /333 $\Omega$				
IWS-10	1 Way	10W	220Hz-12KHz	90dB	1K $\Omega$ /3.3K $\Omega$	179x312x109	
SWS-03	1 Way	3W	220Hz-14KHz	93dB	3.3K $\Omega$ /5K $\Omega$ /10K $\Omega$	182x274x120	
SWS-10		10W	160Hz-10KHz	91dB	1K $\Omega$ /2K $\Omega$ /3.3K $\Omega$		
WS-203	2 Way	3W	200Hz-16KHz	93dB	3.3K $\Omega$ /5K $\Omega$ /10K $\Omega$	315x183x124	
WS-210		10W		92dB	1K $\Omega$ /2K $\Omega$ /3.3K $\Omega$		
WS-230		30W		93dB	330 $\Omega$ /500 $\Omega$ /1K $\Omega$		
FS-30N		1 Way		30W	100Hz-12KHz		89dB
FS-60N	60W		8 $\Omega$ /167 $\Omega$				
FS-100N	100W		8 $\Omega$ /100 $\Omega$				
FS-52N	2 Way	50W	55Hz-20KHz	86dB	8 $\Omega$ /200 $\Omega$	143x230x145	
CI-40(T)		20W	55Hz-15KHz	87dB	8 $\Omega$ /500 $\Omega$ (T)		
CI-60(T)		30W	55Hz-22KHz	88dB	8 $\Omega$ /333 $\Omega$ (T)		
Horn Speaker	CH-522	1 Way	20W	140Hz-12KHz	91dB	500 $\Omega$ /1K $\Omega$	294x209x326
	CH-532		30W	180Hz-9KHz	93dB	165 $\Omega$ /333 $\Omega$	
	HS-20		20W	350Hz-5.5KHz	106dB	500 $\Omega$ /1K $\Omega$	250 $\phi$ x280
	HS-30		30W	250Hz-5KHz		330 $\Omega$ /660 $\Omega$	280 $\phi$ x330
	HS-50		50W	250Hz-5KHz		200 $\Omega$ /400 $\Omega$	320 $\phi$ x350
	HS-20RT		20W	350Hz-5KHz	104dB	500 $\Omega$ /1K $\Omega$	250x197.5x310
	HS-30RT		30W	250Hz-5KHz	106dB	330 $\Omega$ /660 $\Omega$	320x210x365
	HS-40RT		40W	250Hz-5KHz		200 $\Omega$ /400 $\Omega$	320x210x365

## Inter-M Corp. (IMK)

653-5 Banghak-Dong, Dobong-Ku, Seoul, Korea

Overseas Sales Team

Tel\_ +82-2-2289-8141~7 Fax\_ +82-2-2289-8149 E-mail\_ overseas@inter-m.com

www.inter-m.com

※ Design and specification are subject to be changed without pre notice.