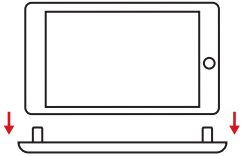
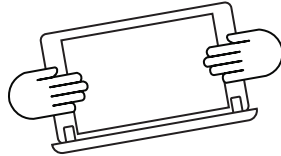


# B R Y D G E | 2.9

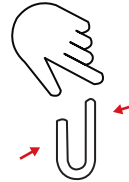
## 1 INSERT/REMOVE



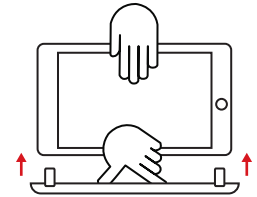
Place your iPad into the hinges with the home button on the right, and your Brydge placed on a flat surface



Lift iPad to test the hinge grip. Your iPad and Brydge should be held tightly together



If iPad is loose, remove and give the hinges a gentle squeeze. Repeat this process until your iPad is held firmly



To remove, grab your iPad and pull straight up, with one hand firmly holding your Brydge against a hard surface

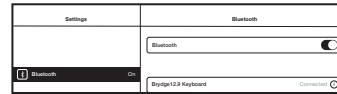
## 2 PAIR



Press and hold the power button for 3 seconds



Press and hold the Bluetooth™ button for 3 seconds



On your iPad, under Settings>Bluetooth, select Brydge 12.9

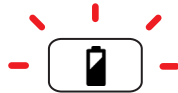


NOTE: When turning on your Brydge, the caps lock, Bluetooth, and battery key will flash once to let you know the Brydge is powered on. The same lights will flash twice when you turn the unit off

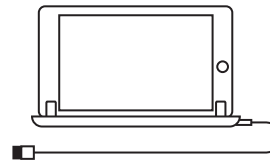
## 3 CHARGE



To check battery life, press the battery key  
One flash = 25%  
Two flashes = 50%  
Three flashes = 75%  
Four flashes = Fully charged



Battery key will begin slowly flashing red when the battery is low and needs charging



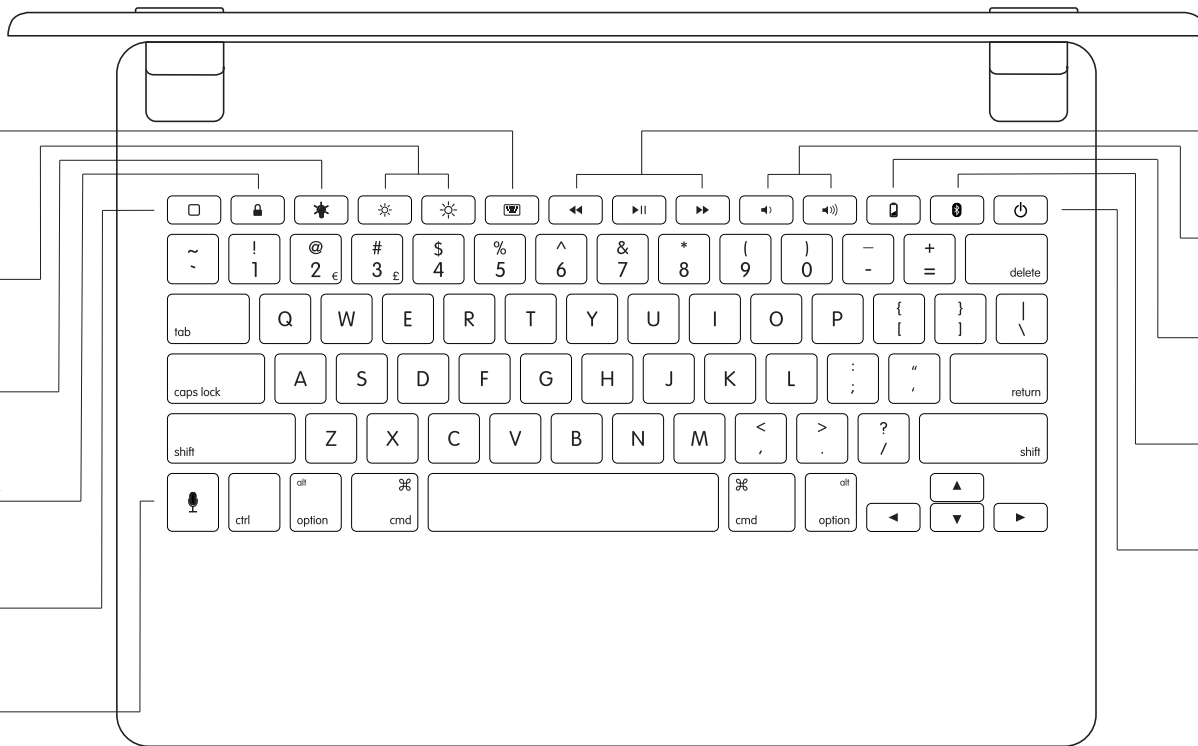
Insert the supplied Micro USB cable



Charging is confirmed by a solid red light under the battery key. Your Brydge is fully charged when the light turns off

NOTE: Charging takes up to 3 hours

# B R Y D G E |2.9



Find more information at [www.brydgekeyboards.com](http://www.brydgekeyboards.com)

## FCC STATEMENT:

This device complies with Part 15 of the FCC Rules. Operation is subject to the following two conditions:

- (1) This device may not cause harmful interference, and
- (2) This device must accept any interference received, including interference that may cause undesired operation.

Warning: Changes or modifications not expressly approved by the party responsible for compliance could void the user's authority to operate the equipment.

NOTE: This equipment has been tested and found to comply with the limits for a Class B digital device, pursuant to Part 15 of the FCC Rules. These limits are designed to provide reasonable protection against harmful interference in a residential installation.

This equipment generates uses and can radiate radio frequency energy and, if not installed and used in accordance with the instructions, may cause harmful interference to radio communications. However, there is no guarantee that interference will not occur in a particular installation. If this equipment does cause harmful interference to radio or television reception, which can be determined by turning the equipment off and on, the user is encouraged to try to correct the interference by one or more of the following measures:

Reorient or relocate the receiving antenna.

Increase the separation between the equipment and receiver.

Connect the equipment into an outlet on a circuit different from that to which the receiver is connected.

Consult the dealer or an experienced radio/TV technician for help.

## RF warning statement:

The device has been evaluated to meet general RF exposure requirement. The device can be used in portable exposure condition without restriction.