

B R Y D G E | 2.3

USER MANUAL

FOR MICROSOFT SURFACE® PRO 3 & 4



**Have a question? Contact Brydge directly at
support@brydgekeyboards.com**

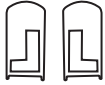
B R Y D G E 12.3

1 SHIMS

IMPORTANT:

Your Brydge 12.3™ is set up for the Surface® Pro 4

If you have a Surface Pro 3, you will need to replace the shims in the keyboard with those in the box



TO REPLACE: Remove the current shims, and ensure the surface is smooth

NOTE: Removing all remaining glue is not essential



Remove tape backing from front and back of new shims and insert evenly into hinges



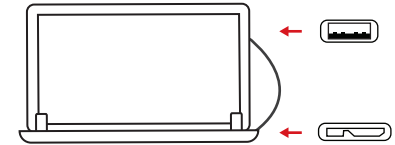
NOTE: Ensure the shim is pressed firmly against the bottom of the hinge before pressing on the front and back

6 STORAGE (Brydge 12.3 Pro 128 only)

1) Connect the included USB 3.0, one end to the Surface (USB - Type A), and the other end to the keyboard (Micro B)

2) Brydge 12.3 Pro 128 appears as an external drive in your file explorer

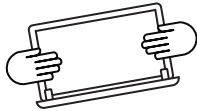
3) Use as you would any other external hard drive



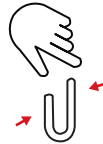
2 INSERT/REMOVE



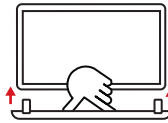
Place your Brydge on a flat surface, insert your Surface into the hinges with the kickstand at the bottom (and closed)



Lift your Surface to test the hinge grip. Your Surface and Brydge should be held firmly together



If the Surface is loose, remove and give the hinges a gentle squeeze. Repeat this process until your Surface is held firmly



To remove, hold your Surface and pull straight up, with one hand firmly holding your Brydge against a hard surface

KEYBOARD SHORTCUTS

Help
F1

Start
Ctrl + Esc

Task View
Alt + Tab

Undo
Ctrl + Z

Cut
Ctrl + X

Copy
Ctrl + C

Paste
Ctrl + V

Underline
Ctrl + U

Italic
Ctrl + I

Page Up
Fn + Up Arrow

Page Down
Fn + Down Arrow

Home
Fn + Left Arrow

End
Fn + Right Arrow

Language Switch
Win + Spacebar
(Spacebar allows you to toggle through available languages)

Touchpad Disable/Enable
Fn + Alt
Hold Fn and tap Alt to disable
Hold Fn and tap Alt again to enable

Switch to Windows 8
Fn + W + 8
(LED Turns Green)

Switch to Windows 10
Fn + W + 0
(LED Turns Blue)

Scroll Direction
Fn + T
(Scroll Up: LED turns blue)
(Scroll Down: LED turns green)

Function Key Swap
Fn + Caps
(F1 - F12 Swap)

3 POWER



To manually power on, press and hold Fn + Delete keys. The light will turn green for 3 seconds to indicate power

NOTE: Once paired, your Brydge will automatically wake upon opening the Surface. The Delete key will turn green for three seconds to let you know your Brydge is awake



To manually power off, press and hold Fn + Delete keys for 3 seconds. The light will turn red momentarily to indicate it's powered off

NOTE: To conserve battery, your Brydge will enter sleep mode after 20 minutes of non-use. Press any key to turn back on. Your Brydge will enter sleep mode when both devices are closed like a laptop

4 PAIR



To pair, press and hold the Bluetooth key for three seconds. The Delete key light will flash blue confirming your Brydge is in pairing mode

NOTE: If pairing takes longer than one minute, the blue light will stop flashing and you will need to press the Bluetooth button again

- 1) Select Windows icon (start menu)
- 2) Select 'Settings'
- 3) Select 'Devices'
- 4) Select 'Bluetooth'
- 5) Confirm Bluetooth is on
- 6) Select 'Brydge 12.3', then 'pair'
- 7) Enter the on-screen passcode and press enter

TRACKPAD FUNCTIONALITY

- Left click on left side of trackpad
- Right click on right side of trackpad

NOTE: Any motion or click on the trackpad will wake up your Brydge from sleep mode

5 CHARGE

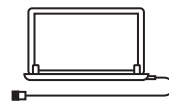


To check battery life, press the battery key. The Delete key will flash three times:

- Green = 75-100%
- Yellow = 25-74%
- Red = 10-24%



When battery is 9% or lower, backlit keys will be disabled and light will flash continuously



Insert the supplied Micro USB cable



Charging is confirmed by a solid red light on the Delete key. Your Brydge is fully charged when the light turns off

NOTE: Charging can take up to 3 hours



Expand



Open Apps
3 fingers up



Desktop
3 fingers down

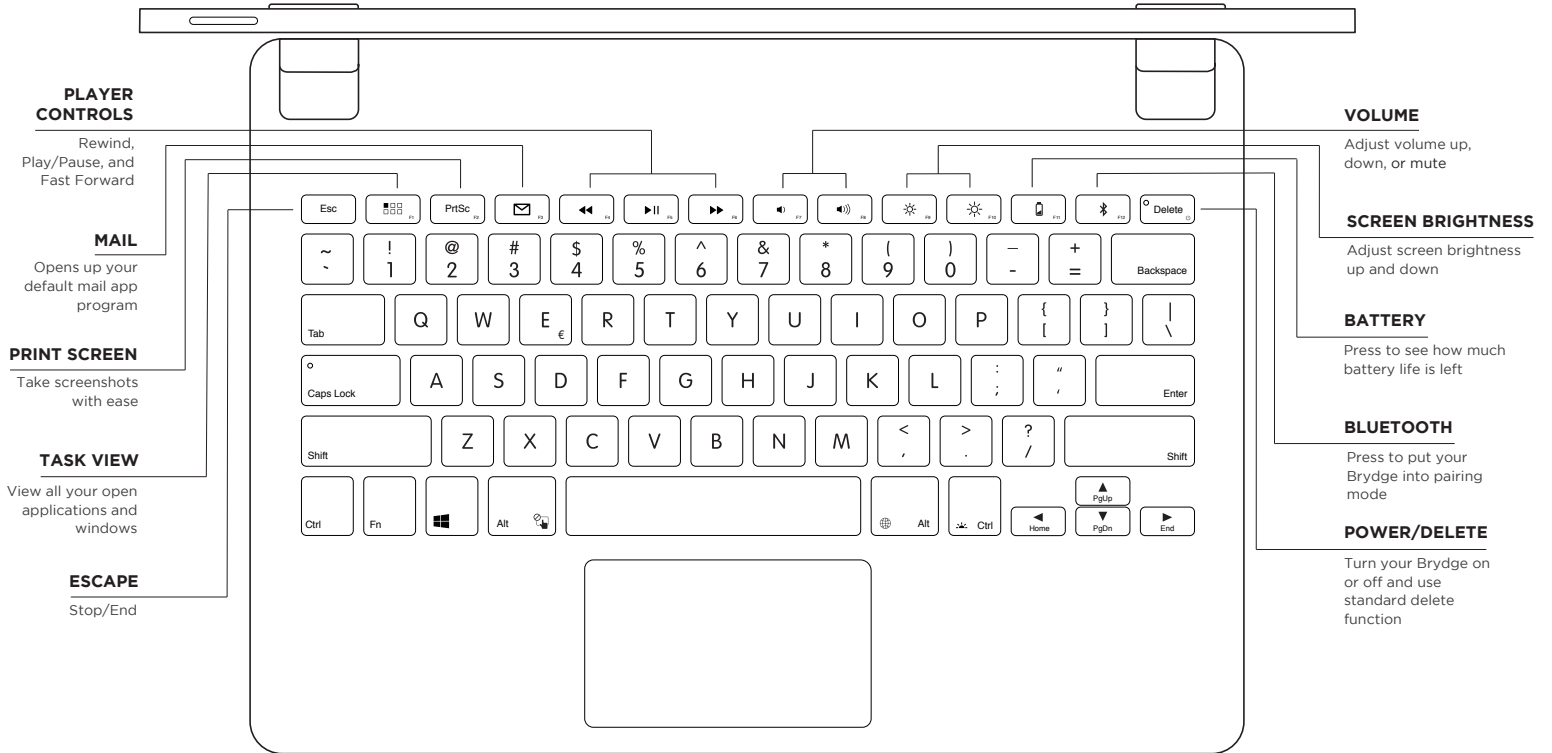


Cortana®
3 finger tap



Narrow

B R Y D G E 12.3



Find more information at www.brydgekeyboards.com