

B R Y D G E 10.5

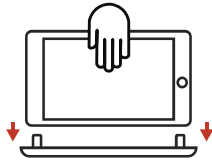
USER MANUAL



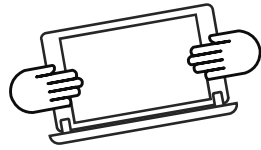
Designed For iPad Pro 10.5

B R Y D G E 10.5

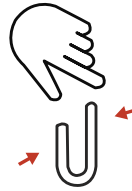
1 INSERT/REMOVE



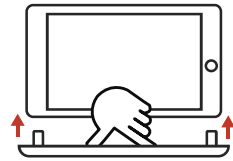
Place your Brydge on a flat surface, rotate the hinges upright to 90° and insert your iPad into the hinges with the home button on the right



Lift your iPad to test the hinge grip. Your iPad and Brydge should be held firmly together



If the iPad is loose, remove and give the hinges a gentle squeeze. Repeat this process until your iPad is held firmly



To remove, hold your iPad and pull straight up, with one hand firmly holding your Brydge against a hard surface

2 POWER



To manually power on, press and hold the power key; the light will turn green for 3 seconds to indicate power

NOTE: Once paired, your Brydge will automatically wake upon opening. The power key will turn green for three seconds to let you know your Brydge is awake



To manually power off, press and hold the power key for 3 seconds; the light will turn red momentarily to indicate it's powered off

NOTE: To conserve battery, your Brydge will enter sleep mode after 20 minutes of non-use. Press any key to turn back on. Your Brydge will enter sleep mode when both devices are closed like a laptop

3 PAIR



Once the keyboard is on, press and hold the Bluetooth™ key for 3 seconds. The power key will flash blue until the keyboard is successfully paired



On your iPad, under Settings > Bluetooth select Brydge 10.5



The light on the power key will shut off to let you know the Brydge has paired and the iPad Settings will say connected

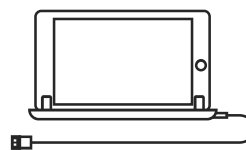
4 CHARGE



To check battery life, press and hold the battery key for four seconds
Power key will flash three times:
Green = 75-100%
Yellow = 25-74%
Red = 10-24%



When battery is 9% or lower, backlit keys will be disabled and light will flash continuously



To charge your Brydge insert the supplied MICRO USB cable into the charging port on the front right corner

NOTE: Charging can take up to 3 hours



The battery is charging when the light on the power key is red; your Brydge is fully charged when the light turns off

Once done charging you can remove the cable (battery should last 12 months or more based on use)

5 KEYBOARD SHORTCUTS

Undo

Command + Z

Copy

Command + C

Underline

Command + U

Show Dock

Command + Option + D

Home Screen

Command + H

Cut

Command + X

Paste

Command + V

Italic

Command + I

Switch App

Command + Tab

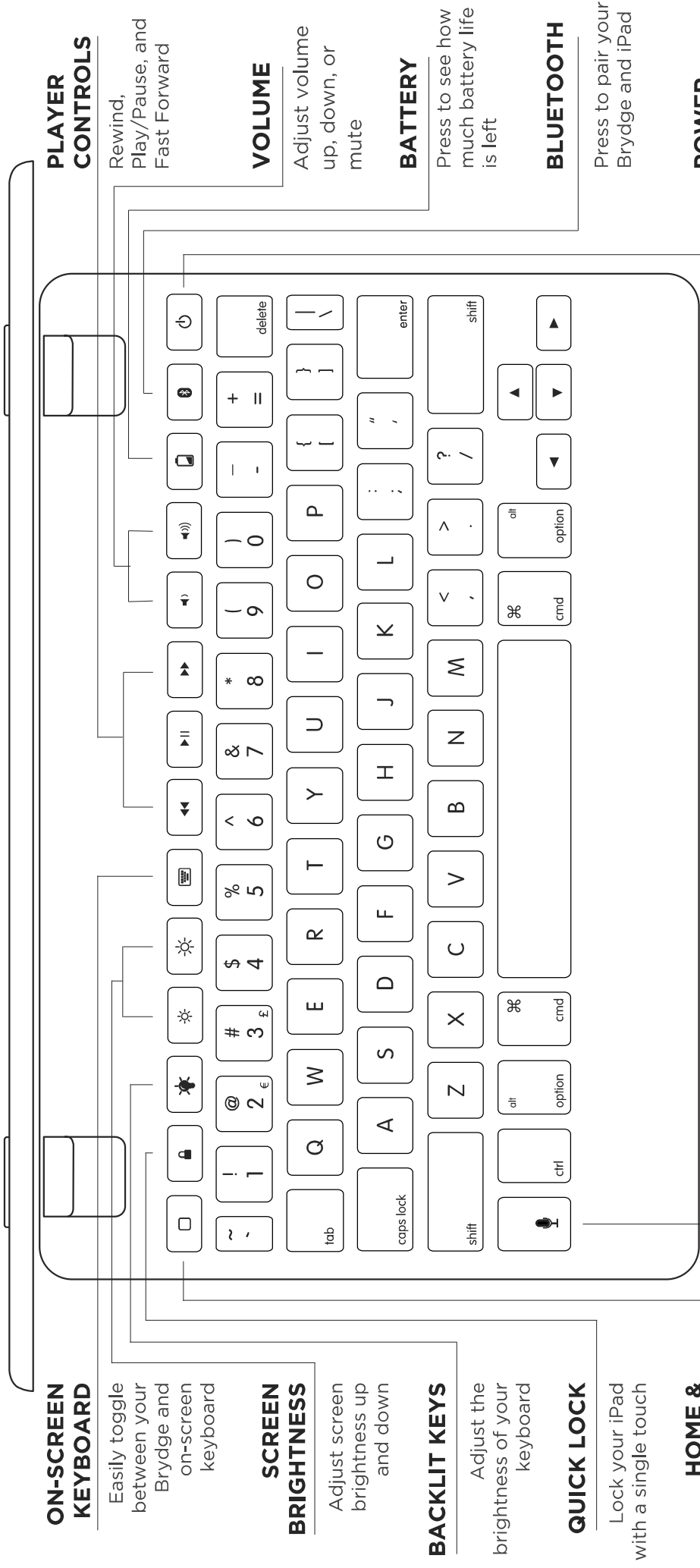
Search

Command + Space

Switch Language

ctrl + shift + Spacebar

(Spacebar allows you to toggle through available languages)



ON-SCREEN KEYBOARD

Easily toggle between your Brydge and on-screen keyboard

SCREEN BRIGHTNESS

Adjust screen brightness up and down

BACKLIT KEYS

Adjust the brightness of your keyboard

QUICK LOCK

Lock your iPad with a single touch

HOME & CONTROL CENTER

- Press once for home screen
- Press twice for control center

PLAYER CONTROLS

Rewind, Play/Pause, and Fast Forward

VOLUME

Adjust volume up, down, or mute

BATTERY

Press to see how much battery life is left

BLUETOOTH

Press to pair your Brydge and iPad

POWER

Turn your Brydge on or off

SIRI

Dedicated Siri button

FCC – Federal Communication Commission (USA)

This equipment has been tested and found to comply with the limits for a Class B digital device, pursuant to Part 15 of the FCC Rules. These limits are designed to provide reasonable protection against harmful interference in a residential installation. This equipment generates uses and can radiate radio frequency energy and, if not installed and used in accordance with the instructions, may cause harmful interference to radio communications. However, there is no guarantee that interference will not occur in a particular installation. If this equipment does cause harmful interference to radio or television reception, which can be determined by turning the equipment off and on, the user is encouraged to try to correct the interference by one of the following measures:

- Reorient or relocated the receiving antenna.
- Increase the separation between the equipment and receiver.
- Connect the equipment into an outlet on a circuit different from that to which the receiver is connected.
- Consult the dealer or an experienced radio/TV technician for help.

FCC Caution:

Any changes or modifications not expressly approved by the party responsible for compliance could void the user's authority to operate this equipment.

This device complies with Part 15 of the FCC Rules. Operation is subject to the following two conditions:

- (1) This device may not cause harmful interference and
- (2) This device must accept any interference received, including interference that may cause undesired operation

**Have a question? Contact Brydge directly at
support@brydgekeyboards.com**

Find more information at
www.brydgekeyboards.com