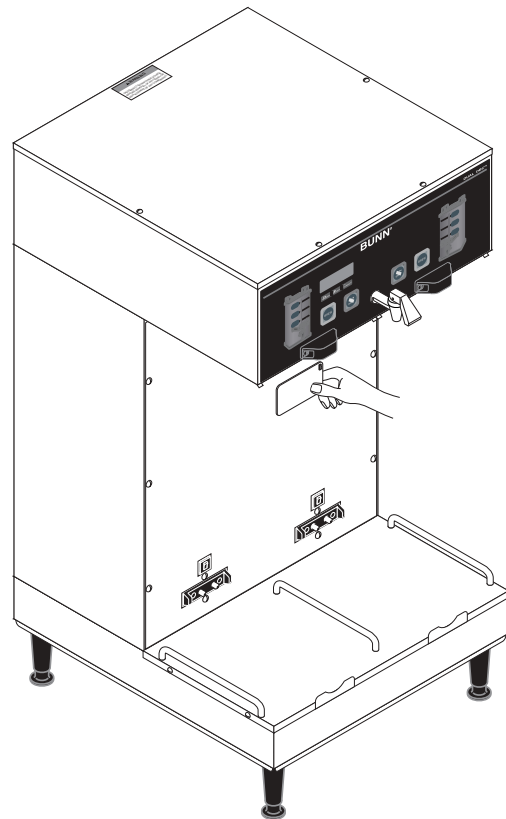
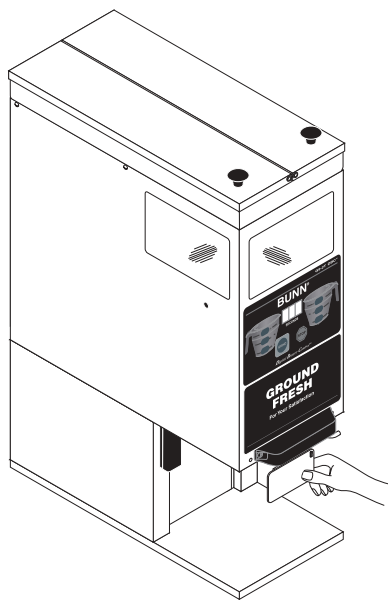
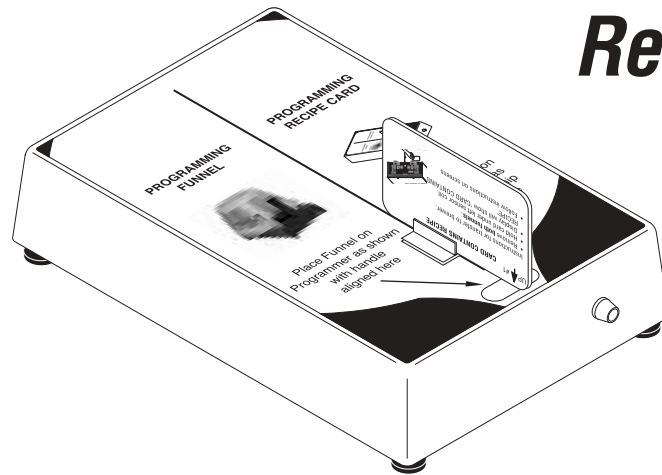


# BUNN®

## ***BRW*** ***BrewWISE®*** ***Recipe Writer***



## **INSTALLATION AND OPERATING MANUAL** **BUNN-O-MATIC CORPORATION**

POST OFFICE BOX 3227  
SPRINGFIELD, ILLINOIS 62708-3227  
PHONE: (217) 529-6601 FAX: (217) 529-6644

## Introduction

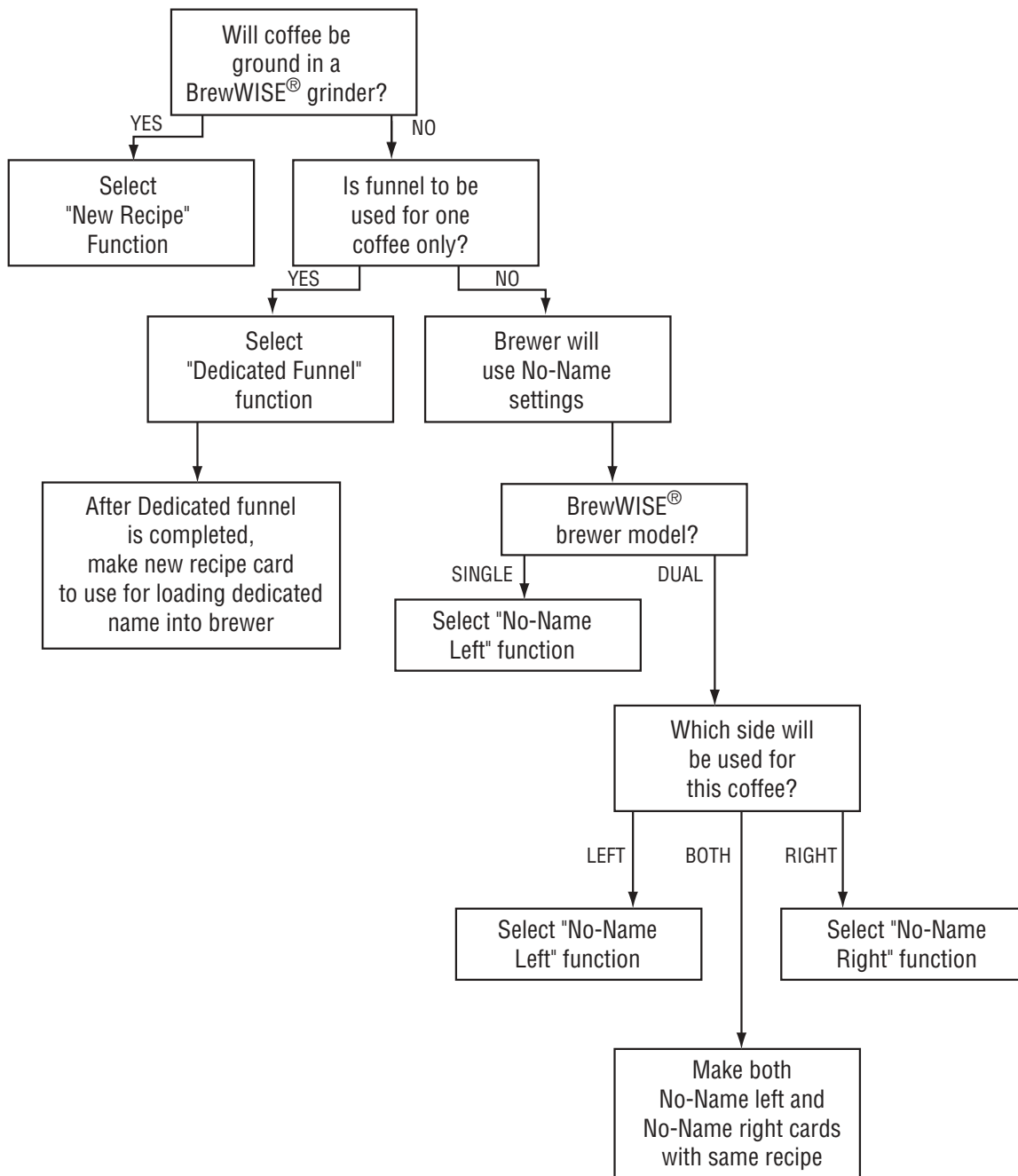
The BrewWISE® Recipe Writer box connects to a PC by way of a standard serial port or USB port where applicable. PC software is included that provides a user interface to the Writer box. A unique feature of the BrewWISE® system is the ability to transfer information to and from the brewer, funnels, and grinder via the funnels or memory cards.

The BrewWISE® Recipe Writer provides a convenient method of transferring information. The system can then be used to configure the brewer, funnels, and grinder for optimum flavor performance.

The BrewWISE® Recipe Writer can be used to make:

- Recipe cards for specific coffee names
- Recipe cards for No-Name coffee
- Funnels dedicated to one specific coffee name
- Cards for advertising messages

Use the following diagram as a guide to selecting the type of funnel or recipe card to be written:



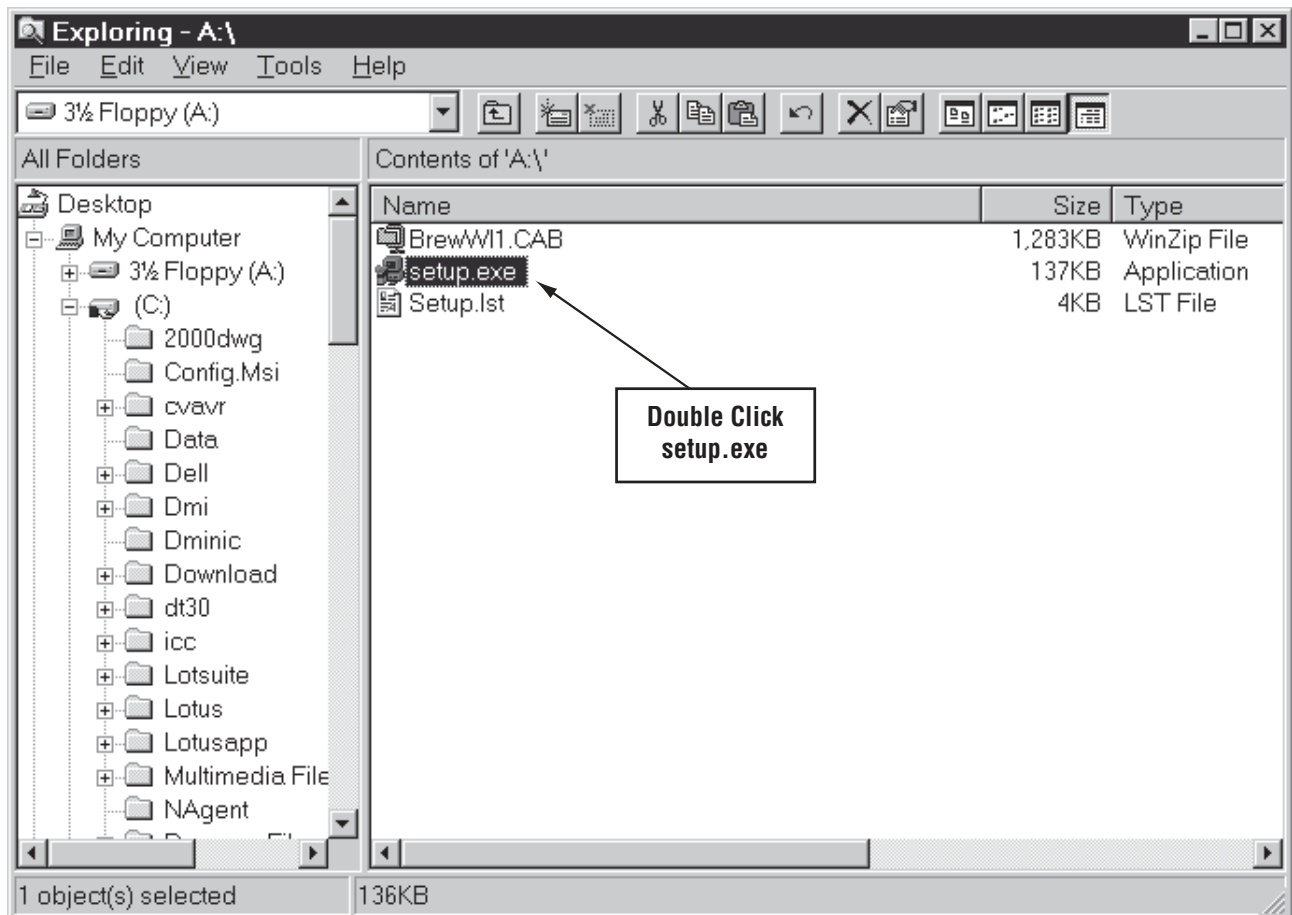
## System Requirements

- PC with 486DX/66MHz or higher processor; Pentium or higher processor recommended.
- Microsoft® Windows 95, 98, 2000, NT®, or XP operating systems.
- VGA or higher resolution monitor; Super VGA recommended.
- A functional, available RS-232 serial port set up as Com1-Com4 or a USB to Serial adapter Cable (Bunn-O-Matic part # 37076.0000) where applicable.

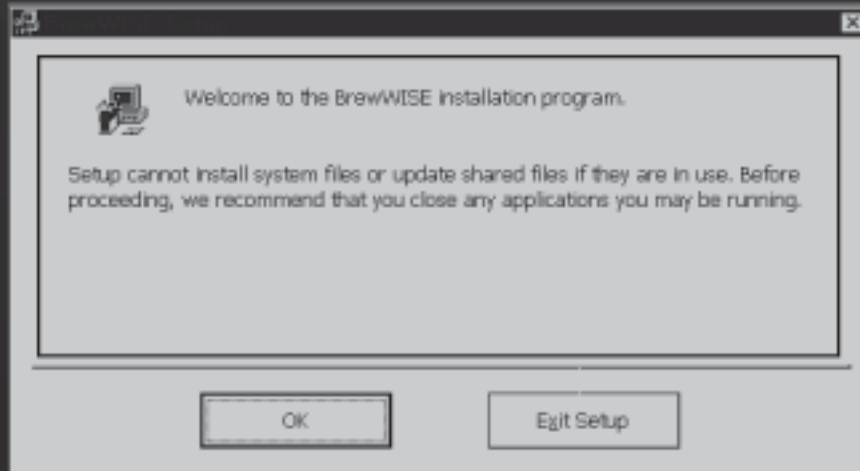
## Installation

If a USB to Serial Adapter was included with your writer, follow the instruction supplied with it for installation.

- It is recommended that all open Windows applications be closed before installing BrewWISE® Recipe Writer software.
- If you are updating an existing version of the BrewWISE® Recipe Writer software, the older version **MUST** first be un-installed using Windows Control Panel. Simply go to Start-Settings-Control Panel and Double-click Add/Remove Programs. Then find the Recipe Writer software in the list of installed programs, select, and click the Change/Remove button.
- From Windows Explorer, Double Click on the setup.exe file located on the installation CD or on Disk 1 of the installation disks. The installation program will display a “Copying Files” screen. This screen could be present for several minutes if installing from floppy disks; much less if installing from a CD. You will be prompted to insert Disk 2 if installing from floppy disks.

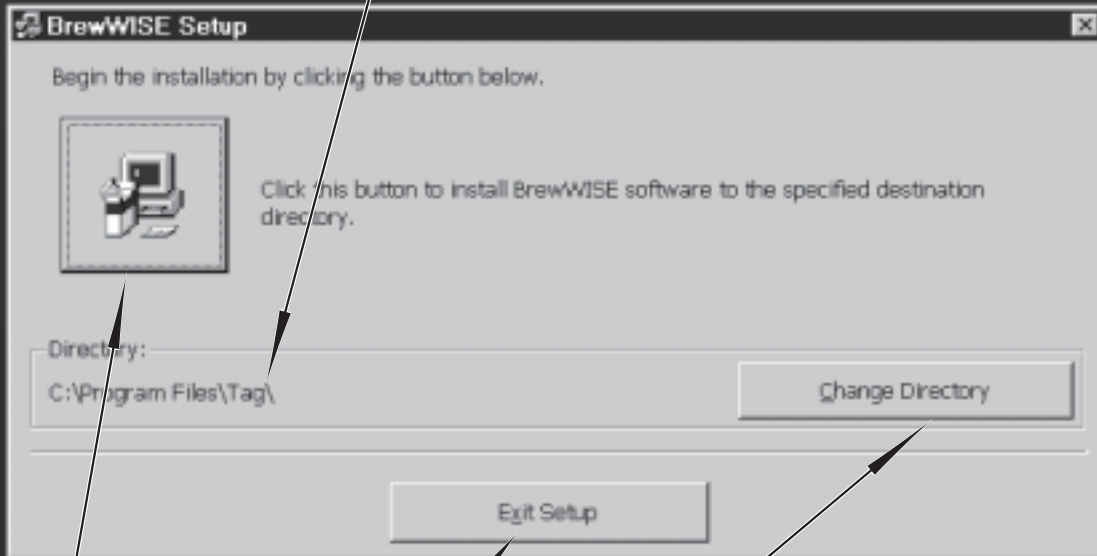


# BrewWISE Setup



- After all the necessary files are copied, the installation program displays a Welcome screen that allows the user to continue with installation or exit the setup program. If any Windows applications are running, it is recommended that you close them at this time.

# BrewWISE Setup



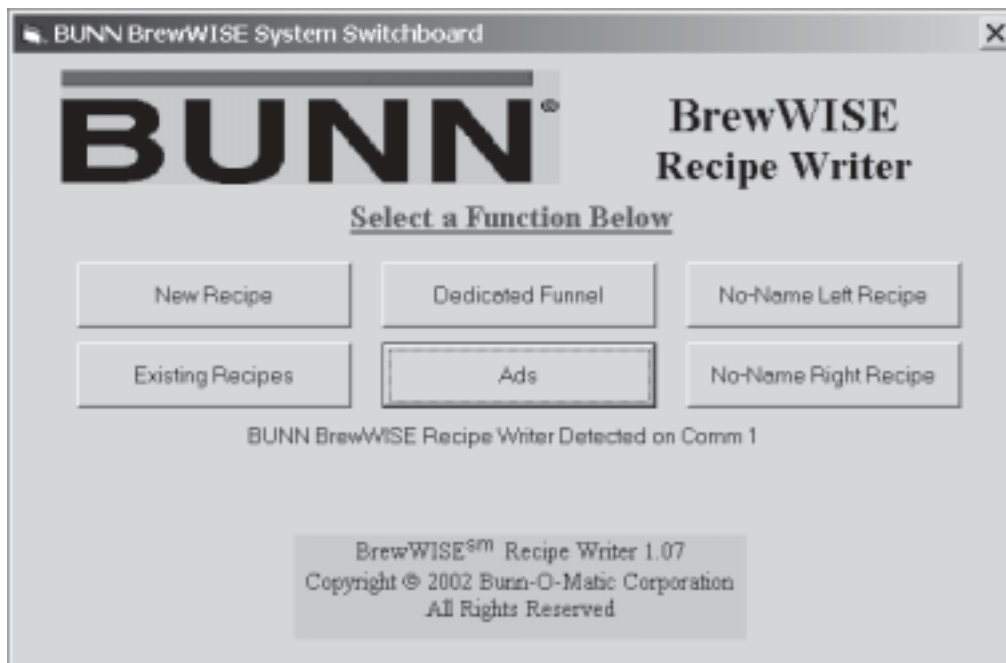
- This label indicates the default installation path of the BrewWISE® software.

- Click this button to continue with the software installation.
- Click this button to exit the setup program.
- Click this button to change the default installation path.

- The setup program will then prompt the user to choose a program group. It is recommended that the default BrewWISE® group be chosen. Click “Continue” to accept this Program Group.
- Once the “Continue” button is clicked, a progress bar will display as the installation completes. Shortly after, a message box indicating that BrewWISE® setup was completed successfully should appear. Clicking OK will complete the setup process.

## Program Operation

- To begin using the BrewWISE® Recipe Writer, plug the serial cable connected to the Recipe Writer Box into the first available serial port on the host computer. If a USB to Serial Adapter Cable was included with your Recipe Writer, you may connect it between the attached serial cable on the Recipe Writer box and the USB port on the host computer. Plug in the power supply attached to the Recipe Writer Box. The green indicator lamp on the Recipe Writer Box should light to indicate that the hardware is ready.
- From your computer's desktop, click "Programs" -> "BrewWISE" -> "BrewWISE". You should then see the switchboard screen of the BrewWISE® Recipe Writer. If your writer hardware is connected properly, the program should display "Bunn BrewWISE® Recipe Writer Detected on Comm 1" towards the bottom of the switchboard form. Your Comm port number may be different depending on individual computer configurations. If the Recipe Writer Hardware is not detected, a message box will appear indicating so. You may enter, save and retrieve recipes and ads without the Recipe Writer hardware present, but you will not be allowed to write unless the proper hardware is detected. The switchboard form is pictured below.



## New Recipe

**BUNN<sup>®</sup>**  
**BrewWISE Recipe Card**

English  Metric  Lock When Writing

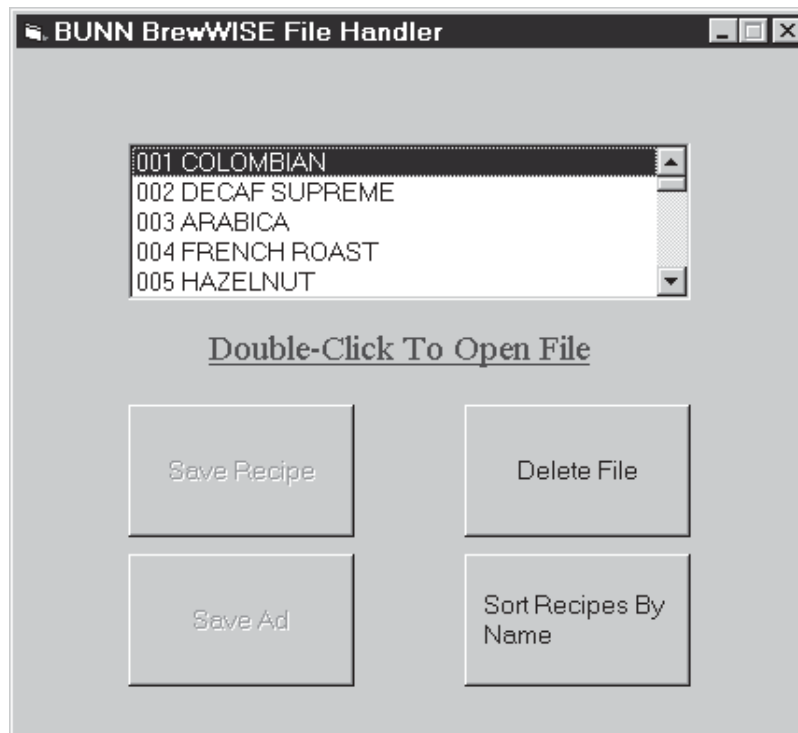
Coffee Name  Coffee Number

Enter a Volume Between 10.0 And 335.0 Ounces

		Small	Medium	Large		
Save Recipe	Standard Brew Functions	Brew Volume	64.0	128.0	192.0	
		% Bypass	0	20	20	
Write Recipe	Pulse Brew Functions	First On Time	Set Small Pulse Brew Times	Set Medium Pulse Brew Times	Set Large Pulse Brew Times	
		Off Times				
		Last On Times				
Print This Recipe	PreInfusion Functions	First On Time	Set Small Preinfusion Times	Set Medium Preinfusion Times	Set Large Preinfusion Times	
		Off Time				
Existing Recipes	Grinder Functions	Funnel Locks	Drip Time	1 : 00	1 : 30	2 : 00
		Gate Time		2.4	5.1	9.7
		Clean-Out Time		10	10	10

- Clicking “New Recipe” from the Switchboard screen brings up the main Recipe form. After a Coffee Name has been typed in and the “Enter” or “Tab” key is pressed, the remaining three buttons on the form will become active. Recipe volume parameters may be entered or saved in either English or Metric units. Depending on the specific software in your brewer, Recipes may be written in Metric units and recognized by the brewer as such. If you are more comfortable with Metric units, but your brewer only recognizes English units, the Recipe may be entered in Metric, then switched to English before writing the Recipe to the card or funnel.
- The instruction label provides information such as high and low parameter limits, depending on the specific text box you are in. This label also shows the allowable format for the numerical parameters, such as whether fractional amounts are allowed.  
**Note:** In text boxes that allow fractional values (a decimal point), whole numbers may still be used without error.
- Most of the text boxes can be typed directly into. The “Tab”, “Shift-Tab” or “Enter” keys can be used to move the cursor on to the next text box. In order to set the Pulse Brew and Pre-Infusion times, the associated buttons must be clicked and the “OFF” text boxes must be double-clicked in order to set the times. These steps are present in order to insure that the user is only able to set Pulse Brew **OR** Pre-Infusion. **Note: Although it is possible to mix Pulse Brew and Pre-Infusion batches on the same recipe, Pulse Brew and Pre-Infusion cannot be used on the same batch size.**

## Existing Recipes




- Clicking the “Existing Recipes” button from either the Switchboard form or the main Recipe form brings up the BrewWISE® File Handler form. The File Handler form allows the user to Open files, Save files, Delete files, or Sort files by name or number. Double-clicking on a file name in the file list box brings the associated recipe into the main form for writing or editing. The File Handler also insures that all recipes have a unique name and number. **In order for the brewer and grinder to recognize recipes properly, duplicate recipe names and / or numbers are not allowed.**
- Navigating to the File Handler form from the “Dedicated Funnel” form will point the application to a directory set aside for Dedicated Funnels. Therefore, the application has the ability to store 999 Dedicated Funnel recipes as well as 999 standard recipes.
- Navigating to the File Handler form from either of the “No-Name” recipe forms will point the application to a directory set aside for “No-Name” recipes. The application will only store one “No-Name Left” and one “No-Name Right” recipe in this directory.



## Existing Recipes

English  
 Metric



Lock When Writing

Coffee Name

Coffee Number

Enter a Volume Between 0.3 And 9.9 Liters

		Small	Medium	Large	
Save Recipe	Standard Brew Functions	Brew Liters	<input style="width: 50px;" type="text" value="1.89"/>	<input style="width: 50px;" type="text" value="4.00"/>	<input style="width: 50px;" type="text" value="6.00"/>
		% Bypass	<input style="width: 50px;" type="text" value="0"/>	<input style="width: 50px;" type="text" value="20"/>	<input style="width: 50px;" type="text" value="20"/>
Write Recipe	Pulse Brew Functions	First On Time	<input style="width: 50px;" type="text" value="1 : 00"/>	Set Medium Pulse Brew Times	Set Large Pulse Brew Times
		Off Times	<input style="width: 50px;" type="text" value="0 : 30"/>		
		Last On Times	<input style="width: 50px;" type="text" value="0 : 45"/>		
Print This Recipe	PreInfusion Functions	First On Time	Set Small Preinfusion Times	<input style="width: 50px;" type="text" value="1 : 30"/>	Set Large Preinfusion Times
		Off Time		<input style="width: 50px;" type="text" value="0 : 15"/>	
Existing Recipes	Grinder Functions	Drip Time	<input style="width: 50px;" type="text" value="1 : 00"/>	<input style="width: 50px;" type="text" value="1 : 30"/>	<input style="width: 50px;" type="text" value="2 : 00"/>
		Gate Time	<input style="width: 50px;" type="text" value="2.4"/>	<input style="width: 50px;" type="text" value="5.1"/>	<input style="width: 50px;" type="text" value="9.7"/>
		Clean-Out Time	<input style="width: 50px;" type="text" value="10"/>	<input style="width: 50px;" type="text" value="10"/>	<input style="width: 50px;" type="text" value="10"/>

- After filling in the form for a new recipe or retrieving an existing recipe, the recipe can be edited and saved, written to a memory card, or a hard copy of the recipe can be printed to your default Windows printer.
- Clicking “Save” brings up the File Handler form where the user can scroll through the existing recipes in order to make sure the desired name or number are not already taken. If “Save” is clicked on the File Handler form, the application checks to make sure that the recipe name and number are unique before saving the recipe. In the event of a conflict, the application will prompt the user to either overwrite the existing recipe or go back to the main recipe screen in order to make changes.

## Writing Recipes

BUNN BrewWISE Recipe System
☐ ☐ ☒

English  
 Metric

BUNN®

Lock When Writing

BrewWISE Recipe Card

Coffee Name

DECAF SUPREME

Coffee Number

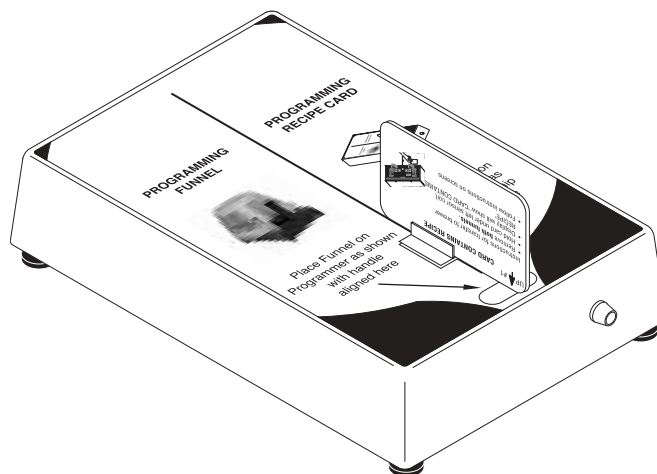
002

Enter a Volume Between 10.0 And 335.0 Ounces

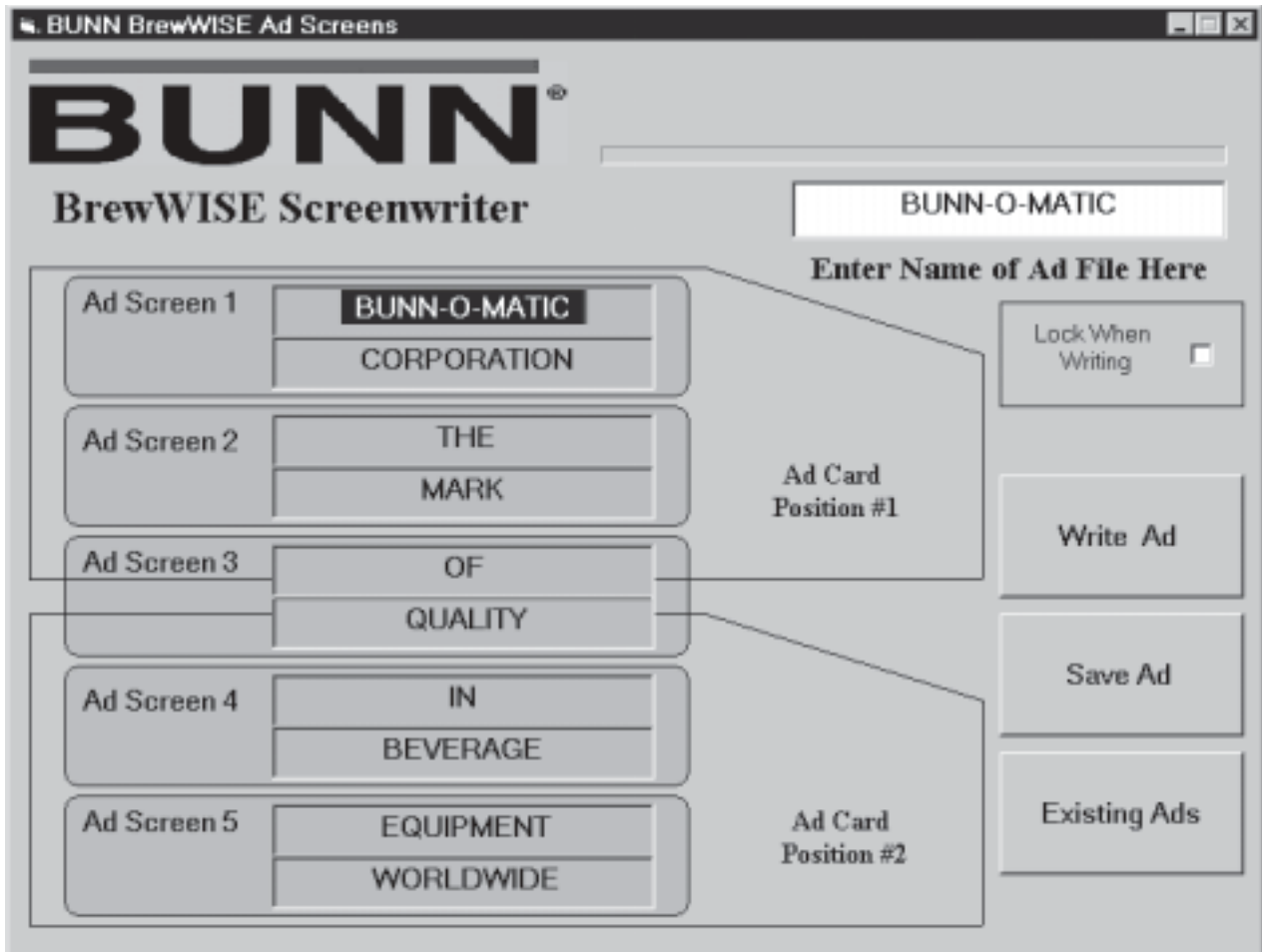
		Small	Medium	Large		
Save Recipe	Standard Brew Functions	Brew Volume	54.0	128.0	192.0	
		% Bypass	0	20	20	
Write Recipe	Pulse Brew Functions	First On Time	Set Small Pulse Brew Times	Set Medium Pulse Brew Times	Set Large Pulse Brew Times	
		Off Times				
		Last On Times				
Print This Recipe	PreInfusion Functions	First On Time	Set Small Preinfusion Times	Set Medium Preinfusion Times	Set Large Preinfusion Times	
		Off Time				
Existing Recipes	Grinder Functions	Funnel Locks	Drip Time	1 : 00	1 : 30	2 : 00
			Gate Time	2.4	5.1	9.7
			Clean-Out Time	10	10	10

Writing Recipe

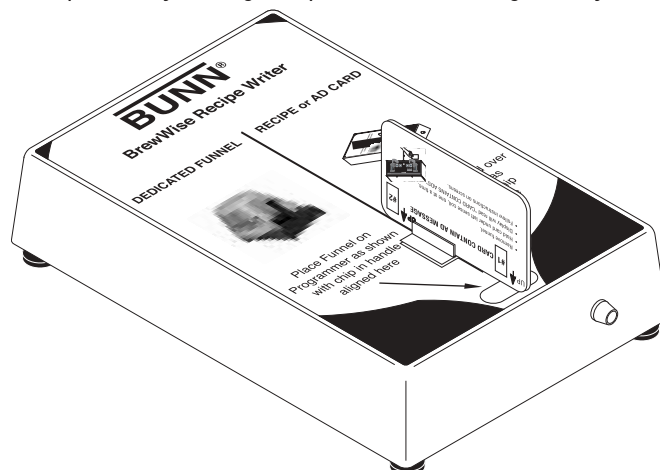
- After a recipe has been filled in completely, it may be transferred to a recipe card by clicking the “Write” button. Make sure that the card is in place on the Writer Box before clicking the “Write” button. A progress bar and a message label will appear at the bottom of the recipe form during the write process in order to keep the user informed as to the status of the write. If the card returns the correct response to the PC, the application displays “Writing Successful”. If the timeout period is reached before the memory card is written, the application displays “Write Has Timed Out”. Generally, this is due to one of three things; 1 - The memory card has been locked from a previous write, 2 - The memory card is not properly in place on the Writer, Or 3 - The Writer hardware is not properly connected to the PC.



## Ads



- The BrewWISE® Recipe Writer can be used to transfer ad messages from the BrewWISE® software into the brewer by using an ad (advertisement) card. Each position can hold five 16-character lines, so that the total ad stored in the brewer can consist of ten 16-character lines. Ads are displayed in screens, each 2-line screen displaying for a few seconds in rotation while the brewer is idle. Writing is done in the same manner as with recipes, except that two write cycles are required. The ad (advertisement) card contains two memory chips labeled #1 and #2. Before writing, the card must be positioned on the box as shown with the #1 chip above the indicated alignment target. After successfully writing to #1, the application will prompt the user to reposition the card so that chip #2 is aligned with the target. **If ads already exist in a brewer, writing only the first ad position may provide unexpected results. For best results, always write both positions when updating existing ads on a brewer, even if the second position consists only of blank lines.** For a more complete explanation of writing to cards, see the previous section entitled "Writing Recipes". **Note: Although blank lines may be left at the end of an ad, leaving one complete ad screen blank can cause undesired results. The application will warn the user if unacceptable combinations are encountered.**
- Completely erasing ads can be accomplished by writing two positions consisting entirely of blank lines.



## Dedicated Funnel

**BUNN BrewWISE Recipe System**

**BUNN®**  
BrewWISE Recipe Card

Lock When Writing

Batch Size:  No Batch,  Small,  Medium,  Large

Coffee Name:  Coffee Number:

Enter a Coffee Name Using 16 Characters or Less

		Small	Medium	Large
Save Recipe	Standard Brew Functions	Brew Volume		
		% Bypass		
Write Recipe	Pulse Brew Functions	First On Time		
		Off Times		
		Last On Times		
Print This Recipe	Preinfusion Functions	First On Time		
		Off Time		
Existing Recipes	Grinder Functions	Funnel Locks	Drip Time	
		Gate Time		
		Clean-Out Time		

The Dedicated Funnel screen (shown above) can be accessed by clicking the “Dedicated Funnel” button from the switchboard screen. The Dedicated Funnel Function is intended to be used when:

1. The ground coffee to be used in the funnel is **NOT** dispensed by a BrewWISE® grinder.
2. The same coffee name is always used in the funnel.
3. There is no plan to change to a different named coffee in the funnel. The dedicated funnel has the name locked into it and can **NEVER** be erased.

The main advantage of the dedicated funnel function is that it allows the use of named recipes when the BrewWISE® grinder is not used; operation is not limited to the two “No-Name” recipes.

Notice that the Dedicated Funnel screen contains no text boxes for brewer or grinder parameters. When writing to a Dedicated Funnel, only the “Coffee Name”, “Coffee Number”, and “Batch” information is written to the funnel chip. Brew parameters must be entered manually at the brewer for each corresponding Dedicated Funnel name or a separate recipe card must be used in order to transfer the recipes.

Although “No Batch” may be selected, the application will require that one of the buttons in the batch group be selected before allowing a “Write” or a “Save”.

In order to prevent accidental re-writing by a grinder, Dedicated Funnels are always written “Locked”. The application will not allow the user to clear the “Locked” checkbox in the dedicated funnel screen.



## No-Name Recipes

		Small	Medium	Large	
Save Recipe	Standard Brew Functions	Brew Volume	64.0	128.0	192.0
		% Bypass	0	20	20
Write Recipe	Pulse Brew Functions	First On Time	Set Small Pulse Brew Times	Set Medium Pulse Brew Times	Set Large Pulse Brew Times
		Off Times			
		Last On Times			
Print This Recipe	Preinfusion Functions	First On Time	Set Small Preinfusion Times	Set Medium Preinfusion Times	Set Large Preinfusion Times
		Off Time			
Existing Recipes	Grinder Functions	Drip Time	1 : 00	1 : 30	2 : 00
		Gate Time	2.4	5.1	9.7
		Clean-Out Time	10	10	10

The No-Name recipe screens are accessed by clicking on one of the “No-Name Recipe” buttons on the switchboard screen. The “Coffee Name” in the No-Name recipe screen is filled in automatically by the application and cannot be edited. The “Coffee Number” for a No-Name recipe is always 000 and cannot be changed.

### No-Name Recipe Notes

When a brew funnel is inserted under the sprayhead of the BrewWISE® brewer, the information stored in the funnel handle is read by the brewer.

If the coffee was ground into the funnel by a BrewWISE® grinder, then the Coffee Name, the Coffee Number, and the batch size information would have been stored in the funnel handle. The brewer reads this information, looks into its memory, and retrieves the corresponding brewing recipe.

If the coffee in the funnel did **NOT** come from a BrewWISE® grinder, then there is no information in the handle. When placed into the brewer, only the fact that the funnel is present is detected. In this case, the brewer uses the “No-Name” recipe since there is no name to look up in memory. On a Dual brewer, it is possible to have two different No-Name recipes, one for the left brewing head and one for the right.

After a No-Name recipe has been filled in completely, it may be transferred to a recipe card by clicking the “Write” button. Make sure that the card is in place on the Writer Box before clicking the “Write” button. A progress bar and a message label will appear at the bottom of the recipe form during the write process in order to keep the user informed as to the status of the write. If the card returns the correct response to the PC, the application displays “Writing Successful”. If the timeout period is reached before the memory card is written, the application displays “Write Has Timed Out”. Generally, this is due to one of three things;

1 - The memory card has been locked from a previous write, 2 - The memory card is not properly in place on the Writer, Or 3 - The Writer hardware is not properly connected to the PC.

## Troubleshooting

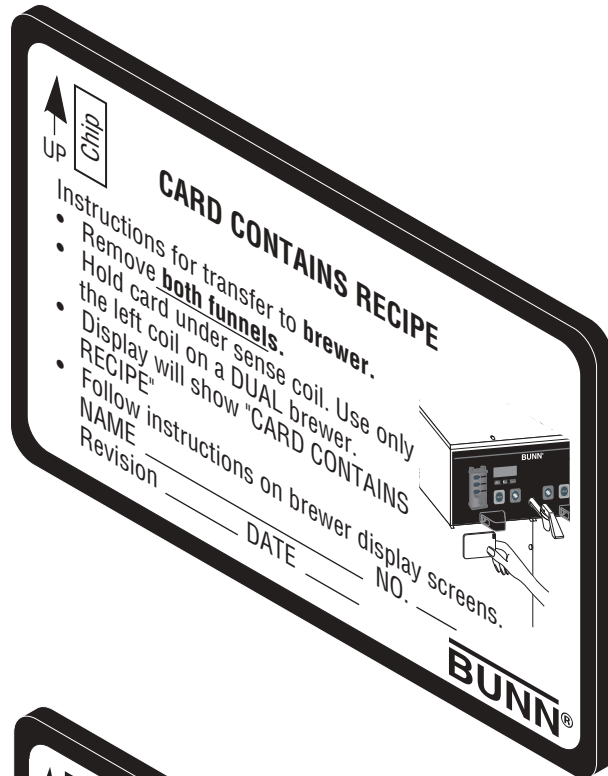
1. If you have software for your PDA installed on the computer used to connect to the BrewWISE® Recipe Writer box, it may reserve the computers serial port as soon as the computer is started up, causing the port to become unavailable to the BrewWISE® Recipe Writer hardware. In order for the BrewWISE® Recipe Writer to write to a card or funnel, the PDA's software may have to be disabled or un-installed before starting the Recipe Writer program.
2. If a valid communication port cannot be found by the Recipe Writer software, yet the hardware for one exists on the host computer, try disabling any enabled IR ports on the host computer.
3. The BrewWISE® Recipe Writer software was designed and tested to work in the English/U.S. version of Microsoft Windows. Using this software in other versions of Microsoft Windows may produce unexpected results.
4. The BrewWISE® Recipe Writer software will not run directly from the CD or floppy disks; it must be installed using the setup.exe program found on the installation media.

## Replacement Parts

Replacement cards may be ordered from Bunn-O-Matic using the following part numbers:

37076.0000 - USB to Serial Adapter Cable (Not Illustrated)

Recipe Card - 34447.0000



Ad Card - 34448.0000

