

# Bushnell®

## BACKTRACK™ POINT▶3

# GPS MADE SIMPLE!

## NEVER GET LOST AGAIN



## Quick Start Guide

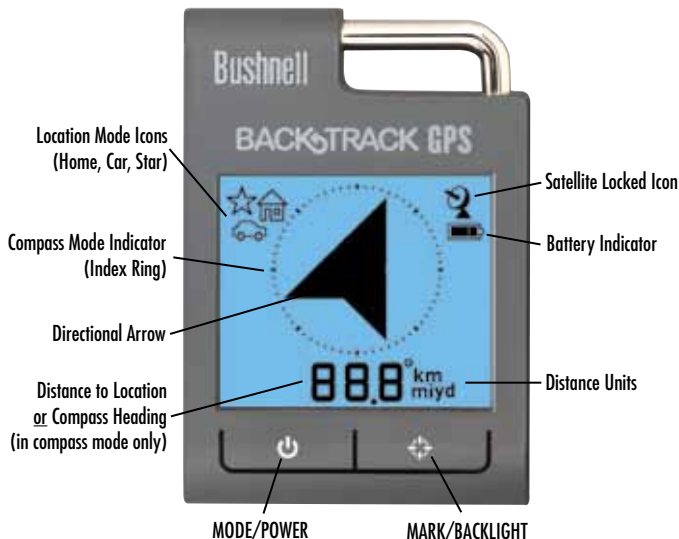
Model #: 360100

Lit# 98-1574/04-10



Full Instruction Manual available online at:  
[www.bushnell.com/manuals/gps](http://www.bushnell.com/manuals/gps)

## Control & Display Guide



*Note: Display as shown above is for reference purposes only. All icons and data will not appear simultaneously on the BackTrack's display during normal operation.*



**Slide, Then Lift Cover to Open**



**Batteries Inserted**

1. Open the battery cover on the back of the BackTrack (slide it down as shown by the arrow, then lift it straight up), insert two AAA batteries (alkaline or lithium), and replace the cover. Change batteries when low power is shown by the battery indicator icon. Make sure the battery contacts are clean and replace both batteries at once. Remove the batteries when storing the unit longer than a few weeks.



**HOLD MODE/POWER Button**

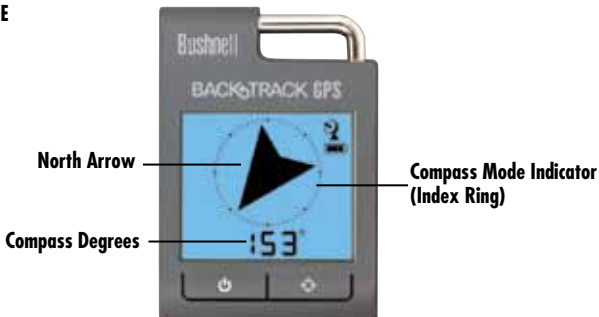
**Take the  
BackTrack  
Outdoors**



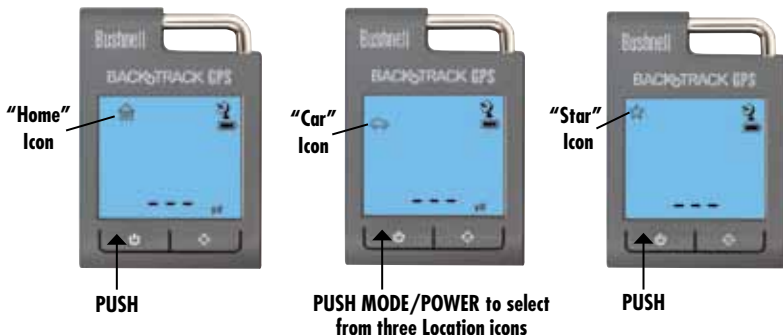
**"Satellite" Icon Not Flashing**

2. **HOLD** (keep pressed for 2 seconds) the **MODE/POWER** button to turn on the BackTrack. The BackTrack is ready to use when the Satellite icon on the display stops flashing (*be sure you are outdoors with a clear view of the sky*).

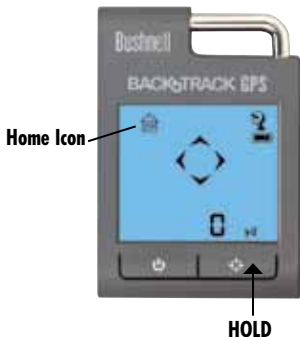
## COMPASS MODE



3. The BackTrack starts out in **Compass Mode** the first time you turn it on. An arrow points North, and the display shows the direction you're facing in degrees (e.g. East=90 degrees). The directional arrows work best in both Compass and Location Modes with the unit held horizontally or "flat" in front of you. Return to **Compass Mode** anytime by briefly pushing the **MODE/POWER** button until the Index Ring and Degree symbol are displayed again.



4. To mark a location you want to get back to, **PUSH** the **MODE/POWER** button one or more times to select one of the three Location Mode icons ("Home", "Car", or "Star").



**HOLD** the MARK button down to save the location of your campsite (with the "Home" icon selected here)

5. After selecting the icon you want, **HOLD** the **MARK** button (while you are physically at or near the location you want to save), until the distance indication changes to "0".

*Note: it does not matter which direction you face when marking the location.*



**1 PUSH**  
Marking an additional location



**2 HOLD**



At the new location,  
**1-Select** another icon  
**2-MARK** the new location

6. You may now turn the BackTrack's power off by **HOLDING** down the **MODE/POWER** button, or proceed to another location you want to mark. Be sure to select a different icon before marking this new spot. **If you hold down MARK with a previously used Location icon selected, you will replace that one with your current location.**



**HOLD MODE/POWER** to turn unit back on. Display shows distance & direction to the last (most recently) marked location.



325 yds distance in the direction of the arrow to your car in the parking lot



**PUSH MODE/POWER** to select the icon you used to store another location. Distance & direction to it are now displayed.

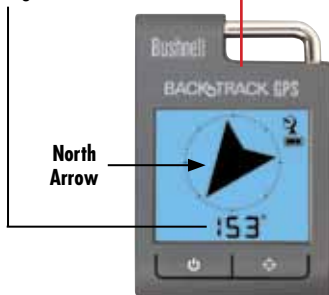


158 yds distance in the direction of the arrow to your campsite

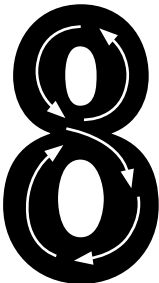
7. To return to one of your previously marked locations, it is easy! Simply turn the BackTrack's power back on (**HOLD** the **MODE/POWER** button) and the BackTrack display will indicate the direction and distance back to the most recent location you marked. If you want to return to a previous location, just **PUSH** the **MODE/POWER** button to select the icon you used when you marked it earlier. To find your way back to the selected location, simply move in the direction the arrow points and watch for the distance to decrease. When you reach your destination, a full circle of arrows will be seen at the outer edge of the display.

## Returning to Compass Mode

Display indicates heading in degrees for this direction



To use the BackTrack as a digital compass, simply **PUSH** the **MODE/POWER** button until you see the "Compass" (Arrow) icon, and the BackTrack will again display an arrow pointing North, and the compass degrees for the direction it's pointed (see red arrow above).



Correct Operating Position



Incorrect Operating Position

To ensure directional accuracy, hold the BackTrack out horizontally in front of you (parallel to the ground) and move it in a "figure 8" pattern a few times to re-calibrate the compass. Your BackTrack should always be held in a horizontal position (not tilted) as shown above when operating the unit and reading the display.



# Other Operations

## Changing the Distance Units

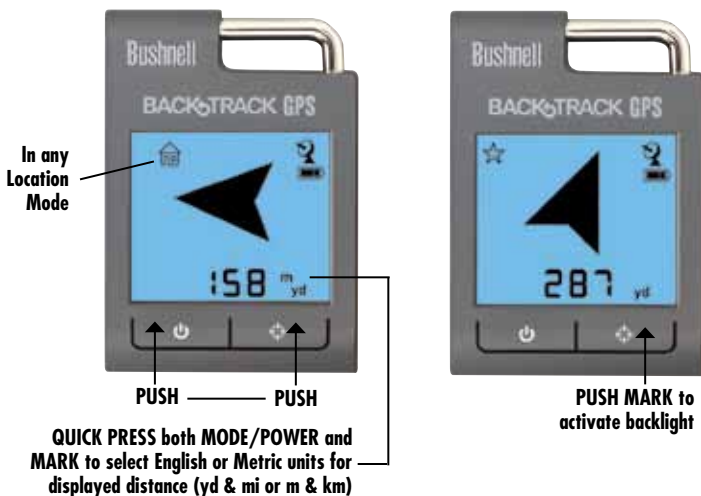
- To change the units from English to Metric, **QUICK PRESS** of both the **MARK** and **MODE/POWER** buttons at the same time when any of the three location icons are selected the distance units display changes from “yd” to “m”. The BackTrack will automatically switch from yards to miles (or meters to km) for longer distances. It can display up a maximum distance of 999 miles or kilometers.

## Turning on the Backlight

- **PUSH MARK** to turn on the display backlight at anytime. It will automatically turn off about 30 seconds later.

## Auto Power Off

- Power automatically turns off after 5 minutes if no buttons have been pressed, or **HOLD** down **MODE/POWER** to turn off manually. When the BackTrack is turned back on, it returns to the last mode you selected.



# Warnings and Notices

## GPS System & Location Accuracy Notice:

The Global Positioning System (GPS) is operated by the government of the United States, which is solely responsible for its accuracy and maintenance. The system is subject to changes which could affect the accuracy and performance of all GPS equipment. The inherent nature of the GPS system itself limits the accuracy of the distance indicated on the BackTrack's display to within about  $\pm 3\text{--}5$  meters (or yards) of the actual marked location.

## Warning:

This device is intended as a supplemental handheld navigation aid only. The user assumes all responsibility associated with the use of this product. It must not be used for any purpose requiring precise measurement of location, direction, distance, velocity or topography. This device should not be used for any aircraft navigation applications.

## Vehicular Use Notice:

Bushnell is committed to the safe and responsible enjoyment of the outdoors.

Do not use this product while driving. An accident can result in property damage, injury or death if the operator fails to practice prudent driving practices. It is the sole responsibility of the driver of any vehicle to operate the motor vehicle in a safe manner. Information from the GPS unit can distract the operator of a motor vehicle. It is unsafe to operate the controls of the GPS unit while operating a motor vehicle. If used in a motor vehicle, it must not be used by the operator of the motor vehicle. If it is used in a motor vehicle it must be mounted in a manner such that it does not distract the operator, does not interfere with the operator's field of view, and does not block or interfere with the air bags or other safety mechanisms of the motor vehicle. Windshields and car windows with integrated metallic materials, such as defrosters, or car window tinting films, can degrade GPS reception inside a car.

## Liability Notice:

In no event shall Bushnell be liable for any incidental, special, indirect or consequential damages, whether resulting from the use, misuse, or inability to use this product or from defects in the product. Some states do not allow the exclusion of incidental or consequential damages, so the above limitations may not apply to you.

## FCC Note:

This equipment has been tested and found to comply with the limits for a Class B digital device, pursuant to Part 15 of the FCC Rules. These limits are designed to provide reasonable protection against harmful interference in a residential installation. This equipment generates, uses and can radiate radio frequency energy and, if not installed and used in accordance with the instructions, may cause harmful interference to radio communications. However, there is no guarantee that interference will not occur in a particular installation. If this equipment does cause harmful interference to radio or television reception, which can be determined by turning the equipment off and on, the user is encouraged to try to correct the interference by one or more of the following measures:

- Reorient or relocate the receiving antenna.
- Increase the separation between the equipment and receiver.
- Connect the equipment into an outlet on a circuit different from that to which the receiver is connected.
- Consult the dealer or an experienced radio/TV technician for help.

Shielded interface cable must be used with the equipment in order to comply with the limits for a digital device pursuant to Subpart B of Part 15 of FCC Rules.

# ONE YEAR LIMITED WARRANTY

Your Bushnell® BackTrack™ GPS unit is warranted to be free of defects in materials and workmanship for one year after the date of purchase. In the event of a defect under this warranty, we will, at our option, repair or replace the product, provided that you return the product postage prepaid. This warranty does not cover damages caused by misuse, improper handling, installation, or maintenance provided by someone other than a Bushnell Authorized Service Department.

*Any return made under this warranty must be accompanied by the items listed below:*

- 1) A check/money order in the amount of \$10.00 to cover the cost of postage and handling
- 2) Name and address for product return
- 3) An explanation of the defect
- 4) Proof of Date Purchased
- 5) Product should be well packed in a sturdy outside shipping carton, to prevent damage in transit, with return postage prepaid to the address listed below:

## **IN U.S.A. Send To:**

Bushnell Outdoor Products  
Attn.: Repairs  
8500 Marshall Drive  
Lenexa, Kansas 66214

## **IN CANADA Send To:**

Bushnell Outdoor Products  
Attn.: Repairs  
25A East Pearce Street, Unit 1  
Richmond Hill, Ontario L4B 2M9

For products purchased outside the United States or Canada please contact your local dealer for applicable warranty information. In Europe you may also contact Bushnell at:

Bushnell Germany GmbH  
European Service Centre  
Mathias-Brüggen-Str. 80  
D-50827 Köln  
GERMANY  
Tel: +49 221 995568-0  
Fax: +49 221 995568-20

This warranty gives you specific legal rights.  
You may have other rights which vary from country to country.

©2010 Bushnell Outdoor Products

# Bushnell®

**Full Instruction Manual available online at:  
<http://www.bushnell.com/manuals/gps>**

Bushnell Outdoor Products  
9200 Cody, Overland Park, Kansas 66214  
(800) 423-3537 • [www.bushnell.com](http://www.bushnell.com)

©2010 Bushnell Outdoor Products