

RTK00V2X720MTORS7J

User's Manual: Hardware

All information contained in these materials, including products and product specifications, represents information on the product at the time of publication and is subject to change by Renesas Electronics Corp. without notice. Please review the latest information published by Renesas Electronics Corp.

Introduction

RTK00V2X720MTORS7J(Tortuga) is an evaluation board for RTK00V2X7200MPIN7J (V2X wireless module). Tortuga can be used as standalone without the need of Host board, and be evaluated RF performance of V2X wireless module. Tortuga also be used in conjunction with the Host board.

V2X wireless module has optimized function to realize IEEE802.11p PHY layer function. This product conforms not only to 802.11p standard but 1609.4 and ETSI standard. This module provides cost effective, low power and small form factor solution for communication unit manufacture.

Overview

Tortuga is an evaluation board for V2X wireless module(including Renesas' ASSP and suitable component). V2X wireless module has optimized function to realize ETSI EN 302 571/ ETSI EN 302 663 PHY/MAC layer function. This product provides cost effective, low power and small form factor solution to communication unit manufacture. V2X wireless module includes radio transceiver, PA, LNA , antenna switch, Filters and peripherals.

Feature

- Support Standard: ETSI EN 302 571/ ETSI EN 302 663 / IEEE802.11p™ -2010<15.July.2010> PHY/MAC protocol with Firmware
- Operational Frequency band: 5.9GHz
- Using 32bit CPU core, Operating Frequency: up to 160MHz
- Internal memory: RAM/128kByte, ROM/32kByte, EEPROM/512Byte
- Mini PCIE Connector
- SDIO interface for host CPU
- UART interfaces
- USB interfaces
- Integrate Function for ETSI EN 302 571/ ETSI EN 302 663
 - OFDM Modulator/ Demodulator with Maximum Ratio Converting diversity
 - MAC hardware accelerator
- Power Supply: 12V from AC Adapter or 5.0V from Host board
- Peak Power Consumption (at 12 V)
 - TYP:
 - Listen mode : TBD (diversity on)/TBD(diversity off)
 - Rx mode : TBD (diversity on)/TBD(diversity off)
 - Tx mode : TBD (@24dBm)
- Operating Temperature
 - Ta = -40 to +85 degree

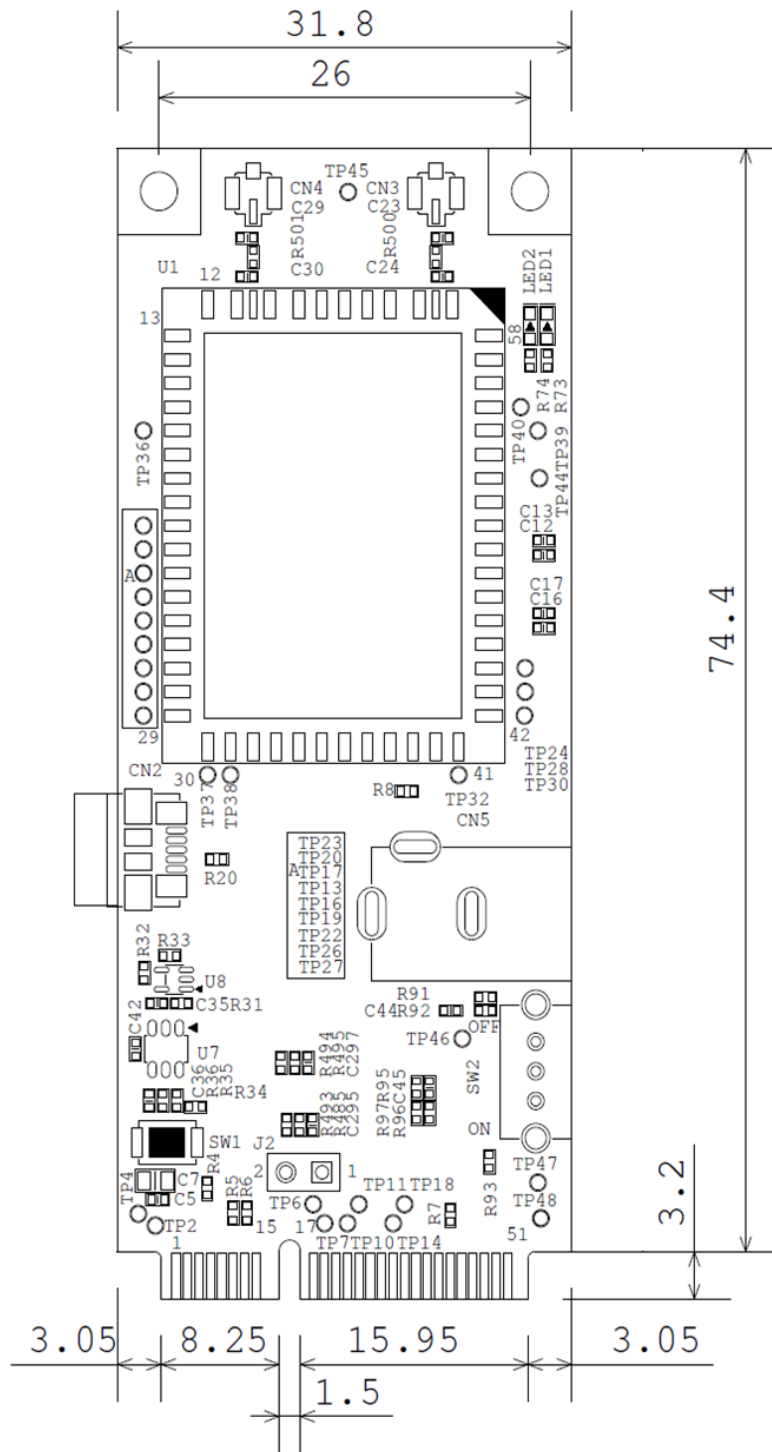
Contents

1. DIMENSION AND LAYOUT	4
1.1 BOARD LAYOUT INFORMATION	4
2. BOARD DESCRIPTION	6
2.1 BLOCK DIAGRAM	6
2.2 MINI PCIE PIN INFORMATION	7
2.3 POWER SUPPLY	8
2.4 USAGE FOR STANDALONE OPERATION	8
3. FUNCTION DETAILS	9
3.1 ABSOLUTE MAXIMUM RATING	9
3.2 ELECTRICAL CHARACTERISTICS	9
3.3 RF CHARACTERISTIC	10
3.3.1 <i>Receive characteristic</i>	10
3.3.2 <i>Transmit characteristic</i>	11
3.4 MODE TRANSFER DEFINITION AND SUB BOARD CONTROL	12
3.5 POWER UP/DOWN, RESET, WDT SEQUENCE	14
3.5.1 <i>Power On / Off Sequence</i>	14
3.5.2 <i>Reset sequence</i>	15
3.5.3 <i>WDT Reset timing</i>	15
3.6 LOGIC INTERFACE AC CHARACTERISTICS	16
3.6.1 <i>UART sequence</i>	16
3.6.2 <i>SDIO sequence</i>	16
3.6.3 <i>1PPS sequence</i>	18
4. APPENDIX – VALIDATION CONFIGURATION INFORMATION	18
5. REGULATORY WARNING STATEMENTS	18
6. EU DECLARATION OF CONFORMITY (DOC)	20
7. MANUFACTURER INFORMATION	21

1. Dimension and Layout

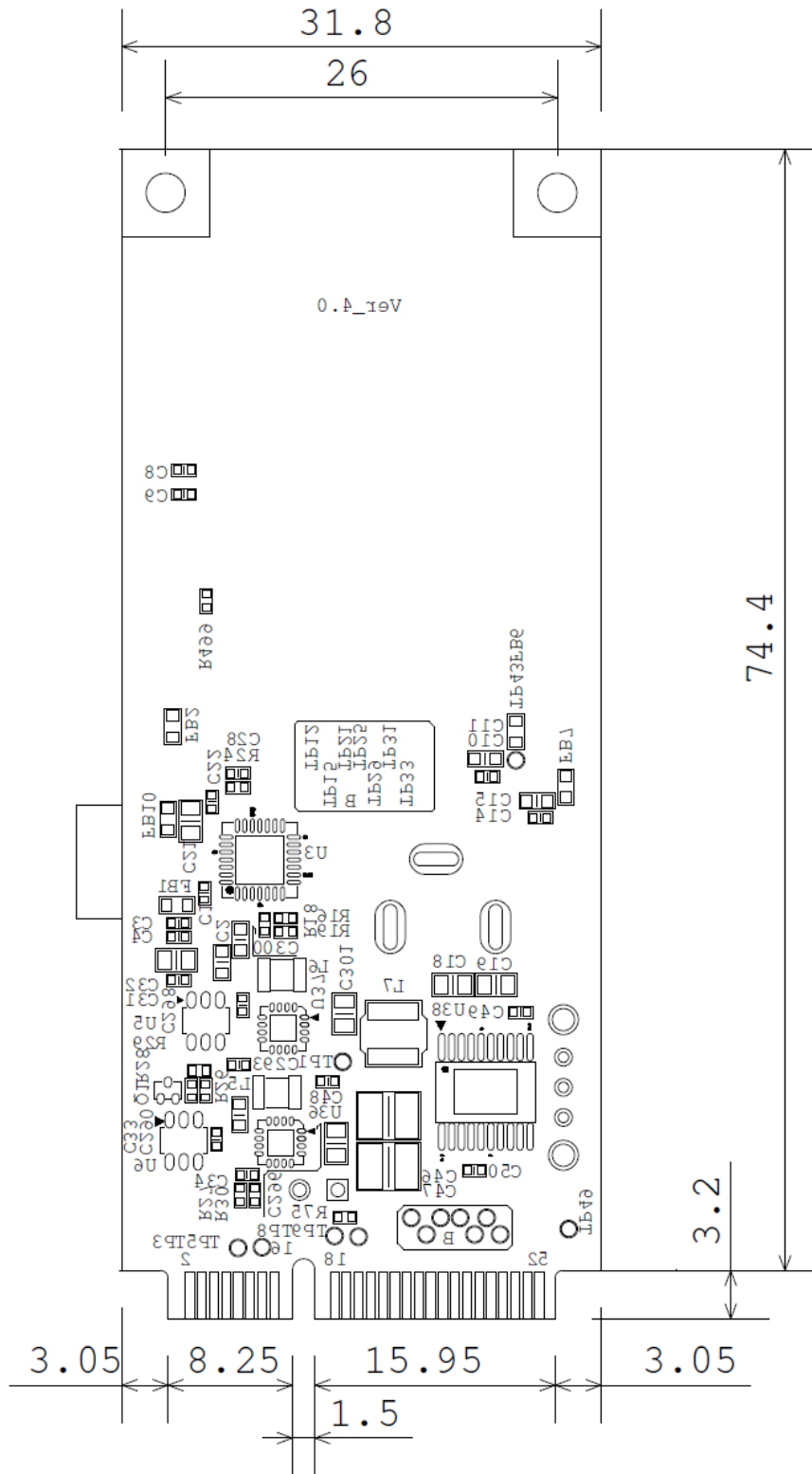
1.1 Board layout information

Figure1. Board top view information



Unit: mm

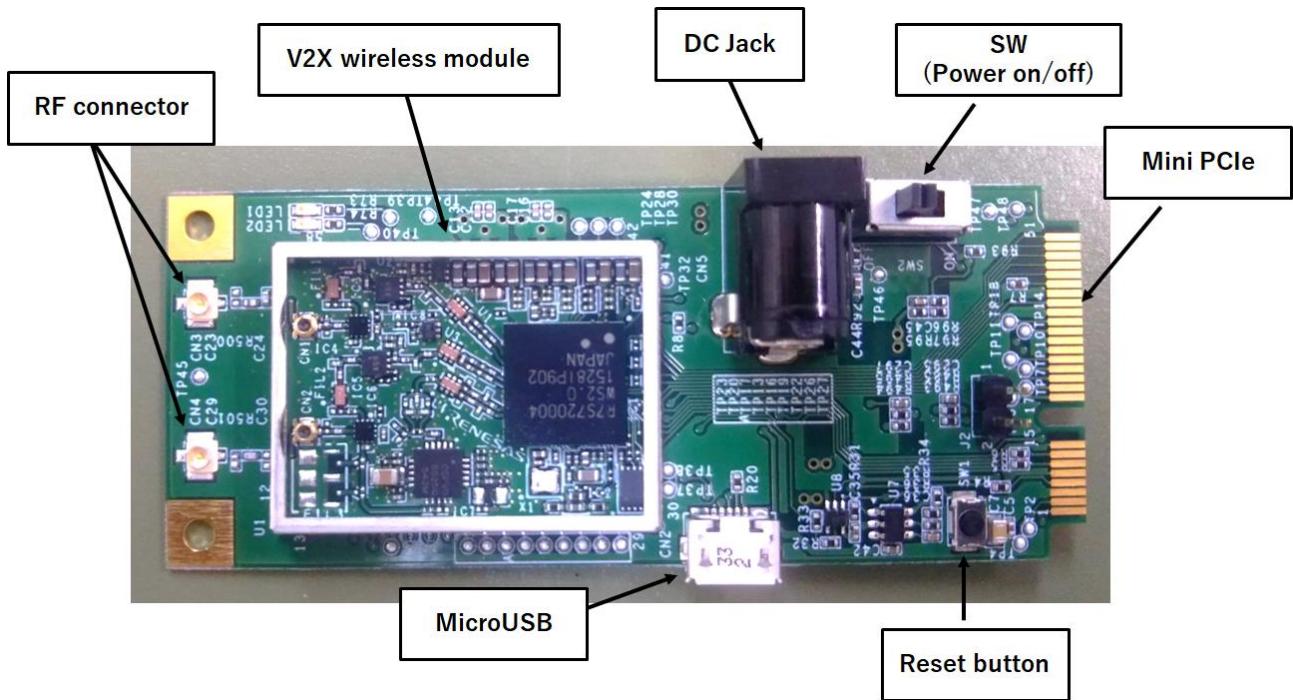
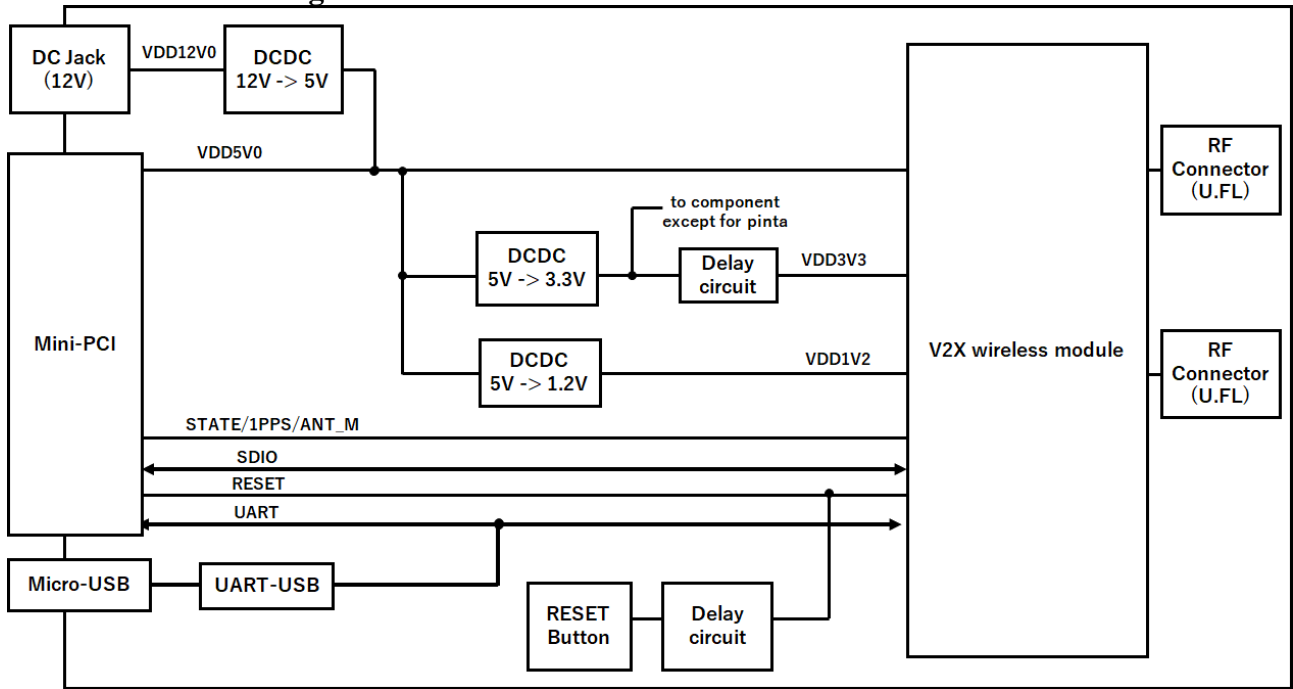
Figure2. Board bottom view information



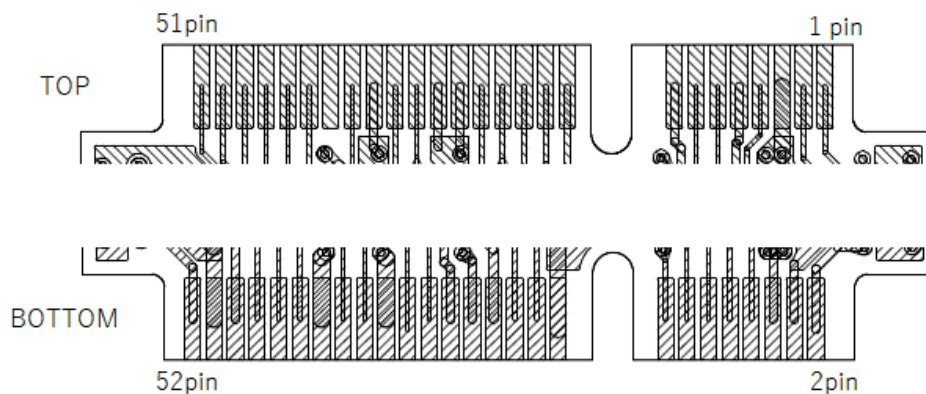
Unit: mm

2. Board description

2.1 BLOCK Diagram



2.2 Mini PCIE pin information



Pin	Pin Name	I/O	Functional	Description
1	RESERVE	I/O	-	No connection(only connected to test pin)
2	RESERVE	I/O	-	No connection
3	RESERVE	I/O	-	No connection(only connected to test pin)
4	GND	-	GND	GND
5	5.0V	-	Voltage Supply	5V voltage supply
6	5.0V	-	Voltage Supply	5V voltage supply
7	RESET	I	CMOS Schmitt Trigger Input (with Pull-Up)	System reset input (Low Active)
8	1PPS	I	CMOS Schmitt Trigger I (with Pull-Down)	If you don't use, select open.
9	GND	-	GND	GND
10	RESERVE	I/O	-	No connection(only connected to test pin)
11	UART0_TXD	O	CMOS Output	UART0 Tx signal [TXD]
12	ANT_M	I	CMOS Schmitt Trigger I (with Pull-Up)	RX Diversity Enable selects. - High : Diversity - Low : Single_ANT B If you don't use, select open.
13	UART0_RXD	I	CMOS Schmitt Trigger Input	UART0 Rx signal [RXD]
14	RESERVE	I/O	-	No connection(only connected to test pin)
15	GND	-	GND	GND
16	STATE	O	CMOS Output	Status indication signal
17	RESERVE	I/O	-	No connection(only connected to test pin)
18	GND	-	GND	GND
19	RESERVE	I/O	-	No connection(only connected to test pin)
20	RESERVE	I/O	-	No connection(only connected to test pin)
21	GND	-	GND	GND
22	RESERVE	I/O	-	No connection(only connected to test pin)
23	RESERVE	I/O	-	No connection(only connected to test pin)
24	5.0V	-	Voltage Supply	5V voltage supply
25	RESERVE	I/O	-	No connection(only connected to test pin)
26	GND	-	GND	GND
27	GND	-	GND	GND
28	5.0V	-	Voltage Supply	5V voltage supply
29	GND	-	GND	GND
30	RESERVE	I/O	-	No connection(only connected to test pin)
31	RESERVE	I/O	-	No connection(only connected to test pin)
32	RESERVE	I/O	-	No connection(only connected to test pin)
33	RESERVE	I/O	-	No connection(only connected to test pin)
34	GND	-	GND	GND
35	GND	-	GND	GND
36	RESERVE	I/O	-	No connection(only connected to test pin)

Pin	Pin Name	I/O	Functional	Description
37	SDIO_CLK	I	CMOS Schmitt Trigger Input (with Pull-Up)	SDIO clock [CLK]
38	RESERVE	I/O	-	No connection(only connected to test pin)
39	RESERVE	I/O	-	No connection(only connected to test pin)
40	GND	-	GND	GND
41	GND	-	GND	GND(Pull Down
42	RESERVE	I/O	-	No connection(only connected to test pin)
43	SDIO_DAT3	I/O	CMOS I/O with Pull-Up	SDIO data [DAT3]
44	RESERVE	I/O	-	No connection(only connected to test pin)
45	SDIO_DAT2	I/O	CMOS I/O with Pull-Up	SDIO data [DAT2]
46	RESERVE	I/O	-	No connection(only connected to test pin)
47	SDIO_DAT1	I/O	CMOS I/O with Pull-Up	SDIO data [DAT1]
48	5.0V	-	Voltage Supply	5V voltage supply
49	SDIO_DAT0	I/O	CMOS I/O with Pull-Up	SDIO data [DAT0]
50	GND	-	GND	GND
51	SDIO_CMD	I/O	CMOS I/O with Pull-Up	SDIO command [CMD]
52	RESERVE	I/O	-	No connection

2.3 Power Supply

Tortuga are powered from the HOST board if used in conjunction with the HOST board.
For standalone operation Tortuga are powered from the AC adapter(12V/2A).

2.4 Usage for standalone operation

Please refer to the “UW2b Tortuga test TP quick manual“ for usage of standalone operation.

3. Function details

*VDD1V2 / VDD3V0 / VDD5V0 / VDD12V0 described in this chapter are correspond to symbol described in “2.1 Block diagram”.

3.1 Absolute Maximum Rating

Item	Symbol	Maximum Rate	Unit	Condition
Supply Voltage	VDD12V0	-0.3 ~ +43.5	[V]	From DC jack
	VDD5V0	-0.3 ~ +6.0	[V]	From Mini PCIE

3.2 Electrical Characteristics

Operation Temperature

Item	Symbol	Min	Typ	Max	Unit	Condition
Operation temperature	Ta		+25		[°C]	

Operation Voltage

Item	Symbol	Min	Typ	Max	Unit	Condition
Supply Voltage	VDD12V0		12		[V]	From DC jack
	VDD5V0	4.75	5	5.25	[V]	From mini PCIE

DC characteristic

Ta = 25 °C, standalone operation, VDD12V0=12V(AC adapter)

Item	Symbol	Min	Typ	Max	Unit	Condition
Current consumption (diversity off)	VDD12V0		TBD		[mA]	Listen mode
			TBD		[mA]	Rx mode
			TBD		[mA]	Tx mode (@24dBm)
Current consumption (diversity on)	VDD12V0		TBD		[mA]	Listen mode
			TBD		[mA]	Rx mode
			TBD		[mA]	Tx mode (@24dBm)

3.3 RF characteristic

*1 typical operating condition (Just informative, not guaranteed.):

*1 HW = Tortuga7, Ta = 25 °C, standalone operation, VDD12V0=12V(AC adapter)

*1 Measurement point is circled in red in the figure below



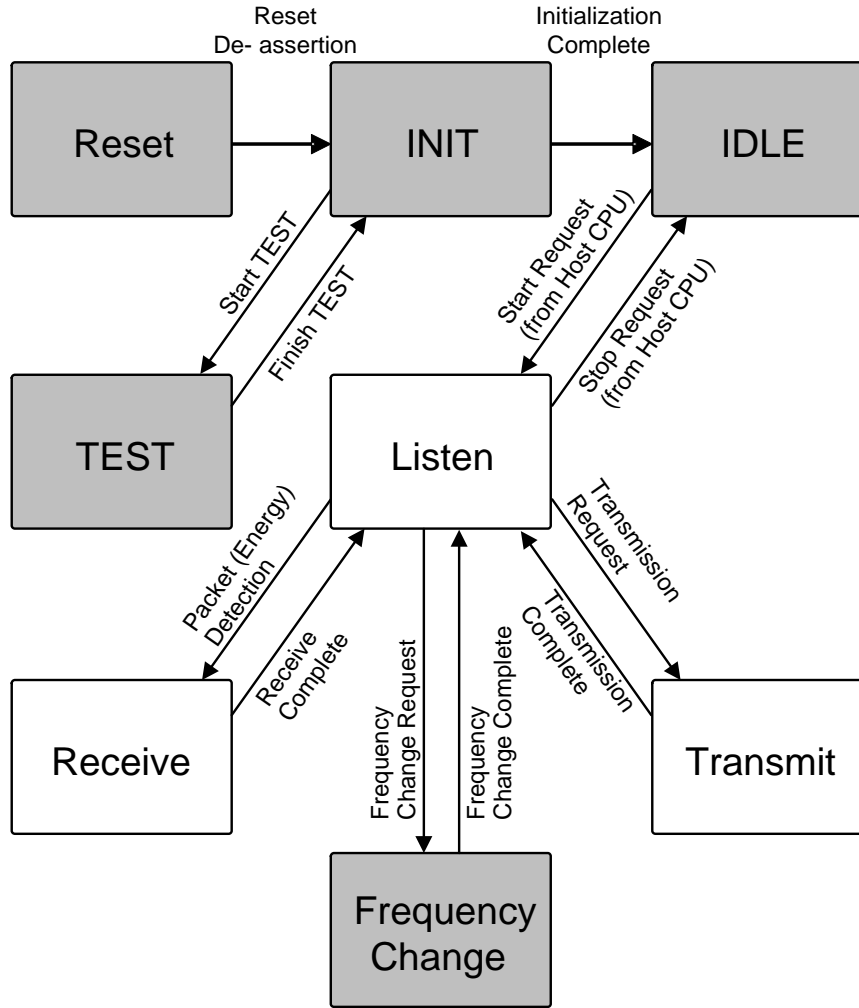
3.3.1 Receive characteristic

	Min	Typ	Max	Unit	Condition
Frequency range	5850		5925	[MHz]	
Input VSWR		2.0		-	5890MHz
Minimum Sensitivity (Diversity off)		-95		[dBm]	Data rate = 3Mbps
		-94		[dBm]	Data rate = 6Mbps
		-88		[dBm]	Data rate = 12Mbps
		-78		[dBm]	Data rate = 27Mbps
Minimum Sensitivity (Diversity on)		-95		[dBm]	Data rate = 3Mbps
		-95		[dBm]	Data rate = 6Mbps
		-90		[dBm]	Data rate = 12Mbps
		-81		[dBm]	Data rate = 27Mbps
Maximum Input Level (Diversity off)		-20		[dBm]	Data rate = 27Mbps
Maximum Input Level (Diversity on)		-20		[dBm]	Data rate = 27Mbps
Adjacent channel rejection (Diversity off)		29		[dB]	Data rate = 3Mbps
		29		[dB]	Data rate = 6Mbps
		27		[dB]	Data rate = 12Mbps
		23		[dB]	Data rate = 27Mbps
Nonadjacent Adjacent channel rejection (Diversity off)		43		[dB]	Data rate = 3Mbps
		40		[dB]	Data rate = 6Mbps
		36		[dB]	Data rate = 12Mbps
		27		[dB]	Data rate = 27Mbps

3.3.2 Transmit characteristic

	Min	Typ	Max	Unit	Condition
Frequency range	5850		5925	[MHz]	
Output VSWR		24			5890MHz
Maximum out put Power(ANT_B)		-8		[dBm]	5890MHz
Maximum out put Power(ANT_A)		-7		[dBm]	5890MHz
Minimum out put Power(ANT_B)		-35		[dBm]	5890MHz
Minimum out put Power(ANT_A)		30		[dBm]	5890MHz
Output Power control range		0.5		[dB]	5890MHz
Power control step		-28		[dB]	
Relative constellation error		-28		[dB]	Data rate = 3Mbps
		-28			Data rate = 6Mbps
		-28			Data rate = 12Mbps
		-32			Data rate = 27Mbps
Spectrum Mask (in band)		-32		[dB/100 KHz] @5890M Hz	4.5MHz<f<5.0MHz offset Pout = 24dBm
		-36			5.0MHz<f<5.5MHz offset Pout =24dBm
		-54			5.5MHz<f<10.0MHz offset ±5.5MHz Pout= 24dBm
		24			10.0MHz<f<15.0MHz offset Pout=24dBm

3.4 Mode Transfer Definition and sub board control



Mode	State	Note
Reset	Reset assert.	Transfer from the mode to the Reset mode by reset signal
INIT	Initialize RF block, internal register and other function.	Initialized LSI function after booting firmware
IDLE	Waiting start request from Host CPU	—
Listen	Waiting the packet indication.	Transfer the Receive mode by detecting the receive signal power, or transfer the Transmit mode by internal transmit request, or transfer the IDLE mode by stop request from Host CPU
Receive	Receive signal processing.	—
Transmit	Transmit signal processing.	—
Frequency Change	Changing Tx/Rx frequency.	—
TEST	Test mode.	Operate loop back calibration and other test for performance optimization

The MAC firmware and BBWLAN control the external RF circuits via the control pins ANT_SW_P, ANT_SW_N,

PAEN(Pin name = PAPE) and RFCNTL. The operation of these external RF circuit control pins according to the internal transceiver state and/or operation inside RF block are summarized in Fig. 3 and Fig. 4.

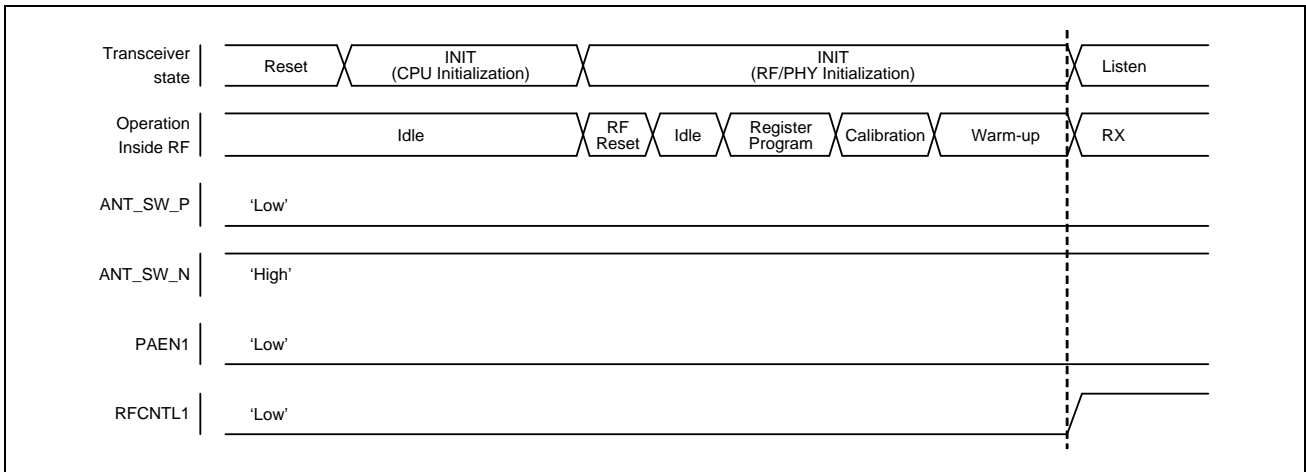


Figure 3 Operation of the External RF Circuit Control Pins (Reset and Initialization)

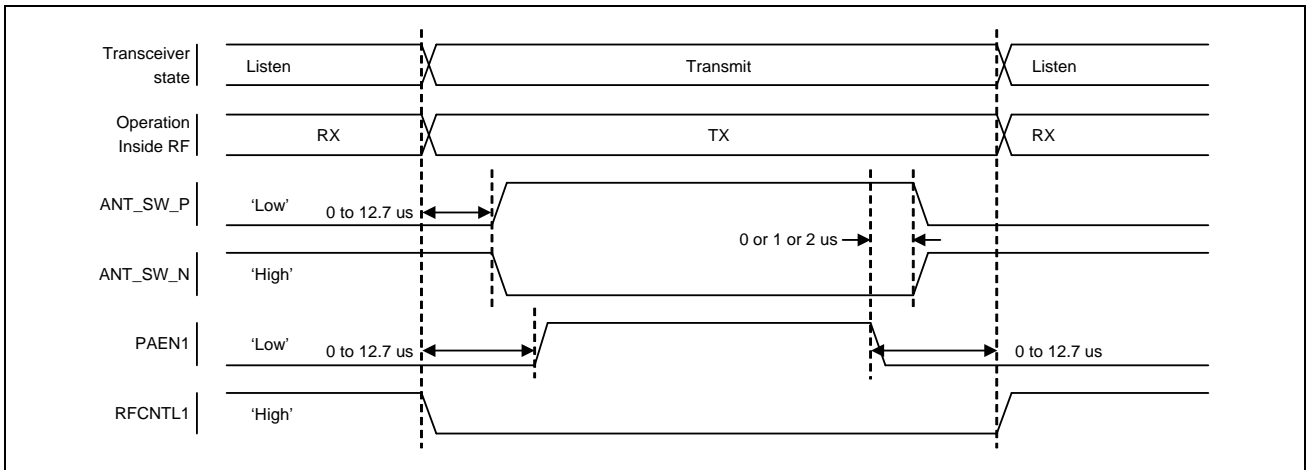


Figure 4 Operation of the External RF Circuit Control Pins (Transmission and Listening)

Remarks)

- *1) The assertion timings of ANT_SW_P/N and PAEN1 can be tuned from 0 to 12.7us independently.
- *2) RFCNTL2, PAEN2, ANT_M pins are reserved for the future as an optional function which might be realized by the MAC firmware. The detail operations are not defined in this hardware document.

3.5 Power up/down, Reset, WDT sequence

3.5.1 Power On / Off Sequence

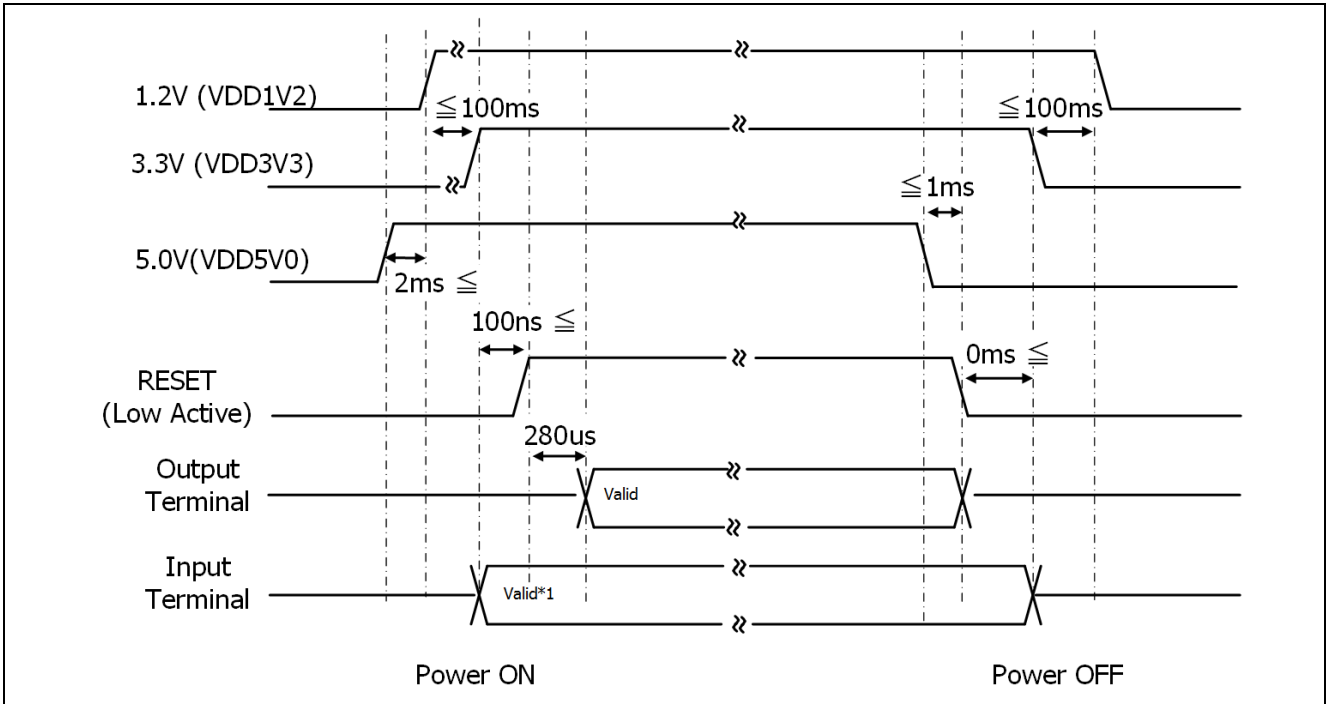
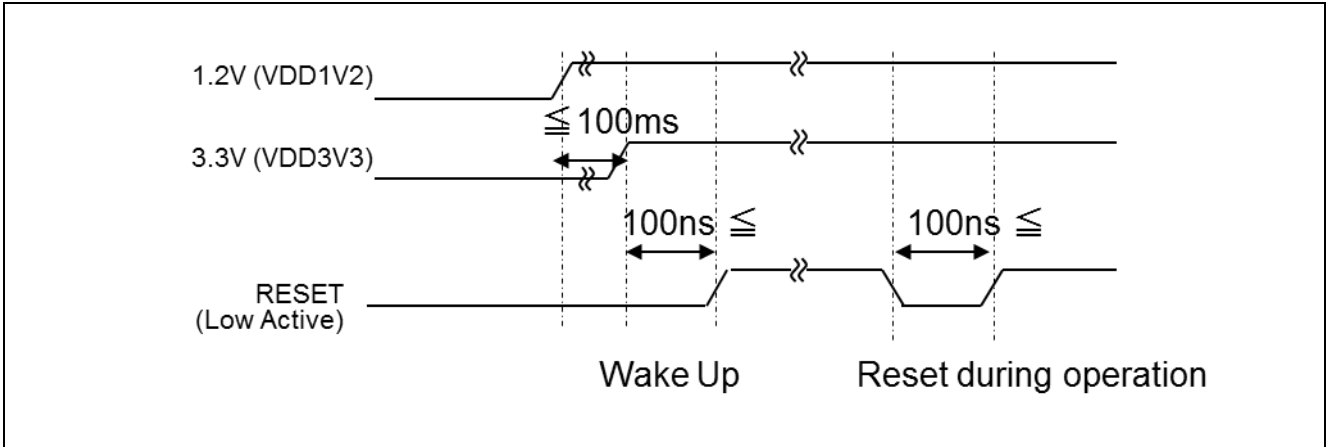


Figure 5 Operation of the External RF Circuit Control Pins (Transmission and Listening)

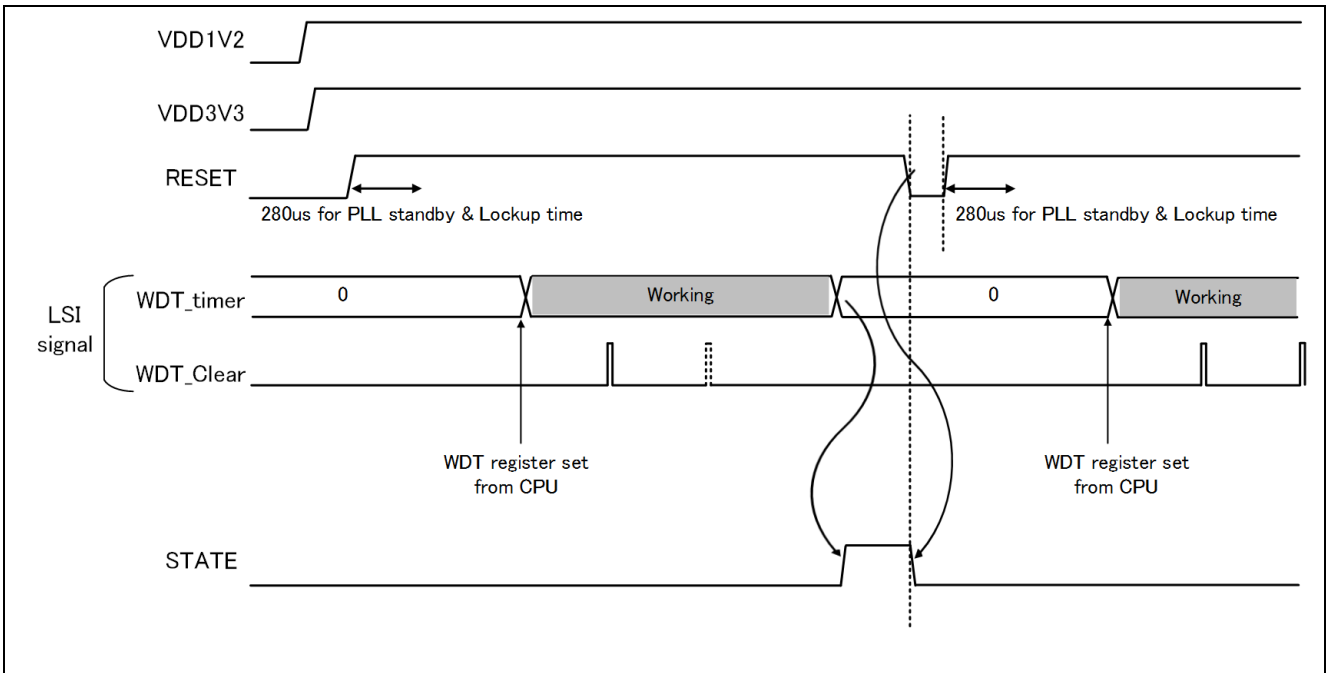
- *1 “Valid” to module input pin in the figure means drive valid data (or pull-up/down) from external.
 - *2 each input signal level to Input from external shall not exceed VDD+0.3V (VDD3V3, VDD1V2, VDD5V0) correspondingly. .
 - *3 until 280µs after reset release, output pin is not defined. After that, it drives initial value for each pin.
- For power supply on, apply power in the order, 5.0V , 1.2V , 3.3V, and after passed more than 100ns of Low level, RESET is released. In order to PLL reset and to stabilize PLL oscillation, after about 280µs, clock is supplied to LSI. For power off, the reverse order shall be done, i.e. RESET is “Active”, and switch off 5.0V , 3.3 V and 1.2 V.

3.5.2 Reset sequence



With making RESET pin "Low", LSI reset is executed. To be surely reset, hold RESETB level "Low" for minimum 100ns. Also for reset under operation, control RESET level "Low" for minimum 100ns.

3.5.3 WDT Reset timing



When Watch-dog time (WDT) counter becomes overflow, STATE signal output "High", and informs WDT flow over to host CPU software. Then LSI stops as reset status. Host CPU software is able to re-start LSI with external RESET signal.

3.6 Logic interface AC Characteristics

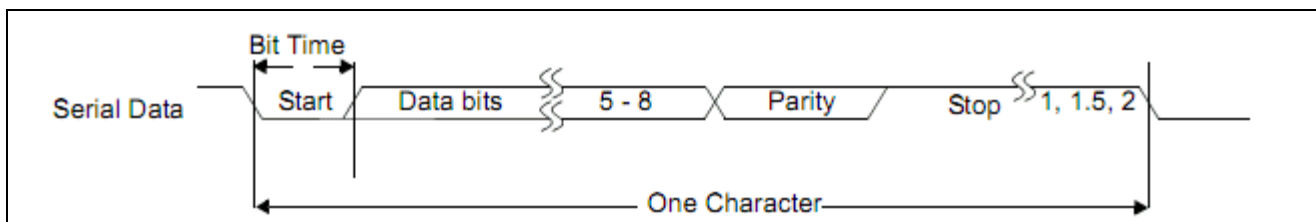
3.6.1 UART sequence

UART Interface characteristic

Ta = 25 °C, VDD12V0

Item	Symbol	Min	Typ	Max	Unit	Condition
Baud rate	fUTRXD	50		128000	bps	
Bit Time	tUTRXD	7.81		20000	us	tUTRXD=1/fUTRXD

UART Serial Data Format



Baud Rate (bps)	Hex Divisor Setting	Bit Time (us)
50	0x61A8	20000.00
75	0x411B	13333.33
110	0x2C64	9090.91
134.5	0x244E	7434.94
150	0x208D	6666.67
300	0x1047	3333.33
600	0x0823	1666.67
1200	0x0412	833.33
1800	0x02B6	555.56
2000	0x0271	500.00
2400	0x0209	416.67
3600	0x015B	277.78
4800	0x0104	208.33
7200	0x00AE	138.89
9600	0x0082	104.17
19200	0x0041	52.08
38400	0x0021	26.04
56000	0x0016	17.86
57600	0x0016	17.36
115200	0x000B	8.68
128000	0x000A	7.81

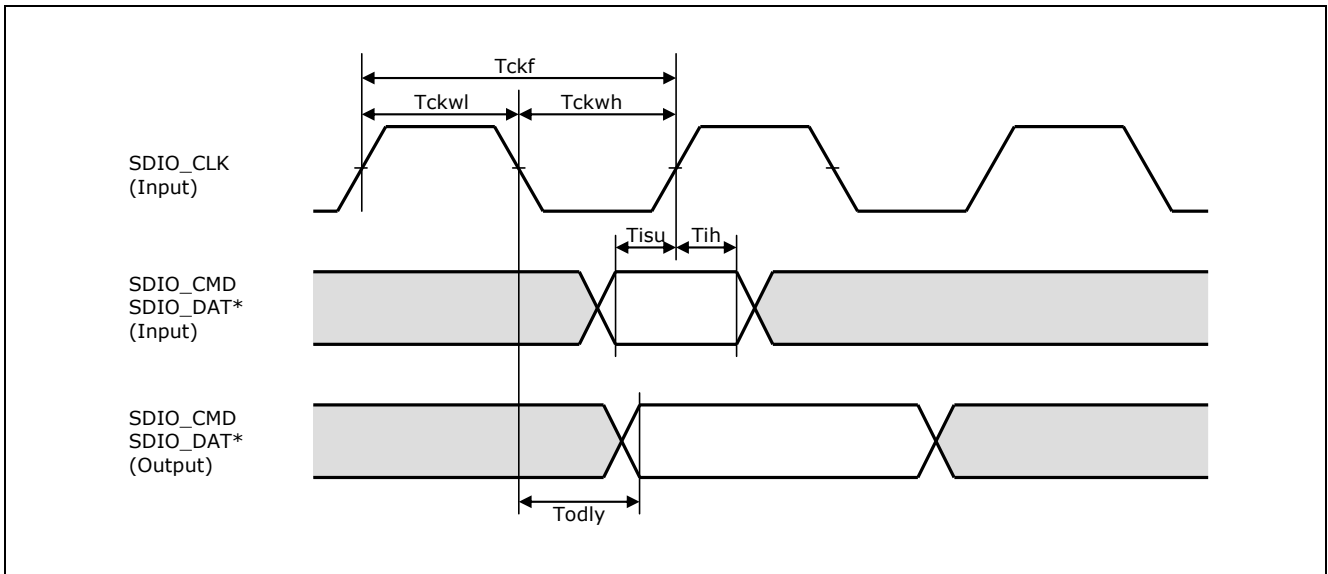
3.6.2 SDIO sequence

SDIO Interface characteristic

Ta = 25 °C, VDD12V0=12V

Item	Symbol	Min	Typ	Max	Unit	Condition
Clock frequency	Tckf			25	MHz	
Clock low position holding time	Tckwl	10			ns	
Clock high position holding time	Tckwh	10			ns	
Input set-up time	Tisu	5			ns	
Input holding time	Tih	5			ns	
Output delay time	Todly	0		14	ns	CL=25pF

SDIO Timing Format



3.6.3 1PPS sequence

1PPS Interface characteristic

Ta = 25 °C, VDD12V0=12V

Item	Symbol	Min	Typ	Max	Unit	Condition
PPS period	Tppsp	—	1.0	—	sec	—
PPS low position holding time	Tppsl	1.0	—	—	us	—
PPS high position holding time	Tppsh	1.0	—	—	us	—

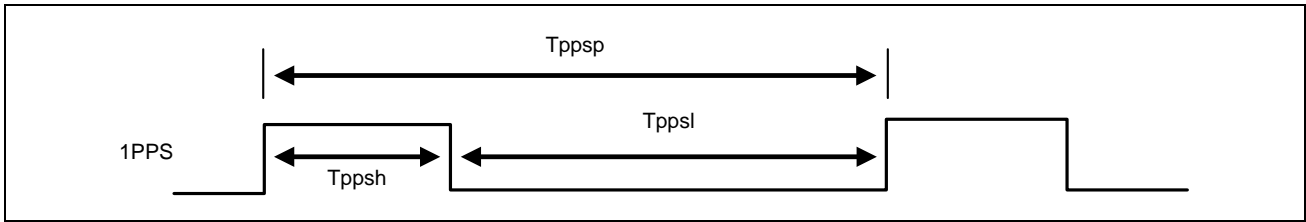


Figure 6 1PPS Interface Timing Format

Remark)

This interface is valid for the United States area. For the Europe area, this information can be ignored.

4. Appendix – Validation configuration information

Equipment information

No	Name	Information
1	VSA	FSW(R&S)
2	VSG	E4438C(Agilent)
3	PC	Versa Pro VB-D(NEC)

5. Regulatory Warning Statements

Federal Communication Commission Interference Statement:

This device complies with Part 15 of the FCC Rules. Operation is subject to the following two conditions:

(1)This device may not cause harmful interference, and (2) this device must accept any interference received, including interference that may cause undesired operation.

This equipment has been tested and found to comply with the limits for a Class B digital device, pursuant to Part 15 of the FCC Rules. These limits are designed to provide reasonable protection against harmful interference in a residential installation. This equipment generates, uses and can radiate radio frequency energy and, if not installed and used in accordance with the instructions, may cause harmful interference to radio communications.

However, there is no guarantee that interference will not occur in a particular installation. If this equipment does cause harmful interference to radio or television reception, which can be determined by turning the equipment off and on, the user is encouraged to try to correct the interference by one of the following measures:

- Reorient or relocate the receiving antenna.
- Increase the separation between the equipment and receiver.
- Connect the equipment into an outlet on a circuit different from that to which the receiver is connected.
- Consult the dealer or an experienced radio/TV technician for help.

FCC Caution: Any changes or modifications not expressly approved by the party responsible for compliance could void the user's authority to operate this equipment.

This transmitter must not be co-located or operating in conjunction with any other antenna or transmitter. For operation within the 5860~5920 MHz frequency range. This device meets all the other requirements specified in Part 90 Subpart I and M of the FCC Rules

Caution:

Risk of electric Shock, dry location use only

Radiation Exposure Statement:

The product comply with the FCC portable RF exposure limit set forth for an uncontrolled environment and are safe for intended operation as described in this manual. The further RF exposure reduction can be achieved if the product can be kept as far as possible from the user body or set the device to lower output power if such function is available.

Integrator Instructions

EUT Name: Tortuga
FCC ID: 2AHMN-W2R
Model Name: RTK00V2X720MTORS7J

Additional Regulatory Conformance Testing and/or Submissions**Required by the Integrator:**

The OEM integrator is responsible for additional system-level EMC and Product Safety testing and certification that applies in the U.S. and other countries to the host system containing the Module. This includes, but is not limited to Federal

Communications Commission ("FCC") Part 15 Class B Digital Emissions, and ETSI EN 301 489-1/-3.

These system-level EMC tests are to be done with the Module installed and included in the scope of the submission.

European Community RED

RF exposure information: The Maximum Permissible Exposure (MPE) level has been calculated based on a distance of $d=20$ cm between the device and the human body. To maintain compliance with RF exposure requirement, use product that maintain a 20cm distance between the device and human body.

**Restriction info:**

The device operated in the European Community using frequency in 5.9GHz,

Restriction in BE,BG,CZ,DK,DE,EE,IE,EL,ES,FR,HR,IT,CY,LV,LT,LU,HU,MT,NL,AT,PL,PT,RO,SI,SK,FI,SE,UK

6. EU Declaration of Conformity (DoC)

EU Declaration of Conformity (DoC)

Hereby we,

Name of manufacturer: Shanghai Bwave Technology Co.,Ltd.
Address: 6F, Building 12, 399 Keyuan Road,Zhangjiang Hi-Tech Park
Zip code & City: Shanghai
Country: China
Telephone number: 021-50803833

declare that this DoC is issued under our sole responsibility and that this product:

Product description: Tortuga
Type designation(s): RTK00V2X720MTORS7J
Trademark: RENESAS
Batch / Serial number:

Object of the declaration (further identification of the radio equipment allowing traceability; it may include a color image for the identification of the radio equipment):

[Model: RTK00V2X720MTORS7J]

is in conformity with the relevant Union harmonization legislation:

Radio Equipment directive: 2014 / 53 / EU
and other Union harmonization legislation where applicable:
N/A

with reference to the following standards applied:

EN 60950-1: 2006+A11: 2009+A1: 2010+A12: 2011+A2: 2013;
Draft EN 301 489-1 V2.2.0(2017-03); Final Draft EN 301 489-3 V2.1.1(2017-03);
EN 302 571 V2.1.1 (2017-02);
EN 62311:2008

The Notified Body Telefication B.V., with Notified Body number 0560 performed:

[Modules: B]

Where applicable:

The issued the EU-type examination certificate: []

Description of accessories and components, including software, which allow the radio equipment to operate as intended and covered by the DoC:

Signed for and on behalf of:

Shanghai, Jul. 28, 2017

Place and date of issue

C. Zhou

Changming ZHOU, Manager

Name, Function, signature

7. Manufacturer Information

Manufacturer : Shanghai Bwave Technology Co.,Ltd.
Address : 6F, Building 12, 399 Keyuan Road,Zhangjiang Hi-Tech Park
City : Shanghai
Country : China

ORIGINAL EQUIPMENT MANUFACTURER (OEM) NOTES

- The OEM must certify the final end product to comply with unintentional radiators (FCC Sections 15.107 and 15.109) before declaring compliance of the final product to Part 15 of the FCC rules and regulations. Integration into devices that are directly or indirectly connected to AC lines must add with Class II Permissive Change.
- The OEM must comply with the FCC labeling requirements. If the module's label is not visible when installed, then an additional permanent label must be applied on the outside of the finished product which states: "Contains transmitter module FCC ID: **2AHMN W2R**. Additionally, the following statement should be included on the label and in the final product's user manual: "This device complies with Part 15 of the FCC Rules. Operation is subject to the following two conditions: (1) This device may not cause harmful interferences, and (2) this device must accept any interference received, including interference that may cause undesired operation."
- The module is limited to installation in mobile or fixed applications. Separate approval is required for all other operating configurations, including portable configuration with respect to Part 2.1093 and different antenna configurations
- A module or modules can only be used without additional authorizations if they have been tested and granted under the same intended end - use operational conditions, including simultaneous transmission operations. When they have not been tested and granted in this manner, additional testing and/or FCC application filing may be required. The most straightforward approach to address additional testing conditions is to have the grantee responsible for the certification of at least one of the modules submit a permissive change application. When having a module grantee file a permissive change is not practical or feasible, the following guidance provides some additional options for host manufacturers. Integrations using modules where additional testing and/or FCC application filing(s) may be required are: (A) a module used in devices requiring additional RF exposure compliance information (e.g., MPE evaluation or SAR testing); (B) limited and/or split modules not meeting all of the module requirements; and (C) simultaneous transmissions for independent collocated transmitters not previously granted together.

This Module is full modular approval, it is limited to OEM installation ONLY.

Integration into devices that are directly or indirectly connected to AC lines must add with Class II Permissive Change.

(OEM) Integrator has to assure compliance of the entire end product include the integrated Module.

Additional measurements (15B) and/or equipment authorizations (e.g Verification) may need to be addressed depending on co-location or simultaneous transmission issues if applicable.

(OEM) Integrator is reminded to assure that these installation instructions will not be made available to the end user of the final host device.

Revision Record	RTK00V2X720MTORS7J User's Manual : Hardware
-----------------	---

Rev.	date	Change summary	
		Page	Details
1.0	17.Jan.2017		1 st Documents (Hisataka TAKAGI)
1.1	29.Aug.2017	10 – 11	Change RF characteristic

All trademarks and registered trademarks are the property of their respective owners.

General Precautions in the Handling of MPU/MCU Products

The following usage notes are applicable to all MPU/MCU products from Renesas. For detailed usage notes on the products covered by this document, refer to the relevant sections of the document as well as any technical updates that have been issued for the products.

1. Handling of Unused Pins

Handle unused pins in accordance with the directions given under Handling of Unused Pins in the manual.

- The input pins of CMOS products are generally in the high-impedance state. In operation with an unused pin in the open-circuit state, extra electromagnetic noise is induced in the vicinity of LSI, an associated shoot-through current flows internally, and malfunctions occur due to the false recognition of the pin state as an input signal become possible. Unused pins should be handled as described under Handling of Unused Pins in the manual.

2. Processing at Power-on

The state of the product is undefined at the moment when power is supplied.

- The states of internal circuits in the LSI are indeterminate and the states of register settings and pins are undefined at the moment when power is supplied.
In a finished product where the reset signal is applied to the external reset pin, the states of pins are not guaranteed from the moment when power is supplied until the reset process is completed.
In a similar way, the states of pins in a product that is reset by an on-chip power-on reset function are not guaranteed from the moment when power is supplied until the power reaches the level at which resetting has been specified.

3. Prohibition of Access to Reserved Addresses

Access to reserved addresses is prohibited.

- The reserved addresses are provided for the possible future expansion of functions. Do not access these addresses; the correct operation of LSI is not guaranteed if they are accessed.

4. Clock Signals

After applying a reset, only release the reset line after the operating clock signal has become stable. When switching the clock signal during program execution, wait until the target clock signal has stabilized.

- When the clock signal is generated with an external resonator (or from an external oscillator) during a reset, ensure that the reset line is only released after full stabilization of the clock signal. Moreover, when switching to a clock signal produced with an external resonator (or by an external oscillator) while program execution is in progress, wait until the target clock signal is stable.

5. Differences between Products

Before changing from one product to another, i.e. to a product with a different part number, confirm that the change will not lead to problems.

- The characteristics of an MPU or MCU in the same group but having a different part number may differ in terms of the internal memory capacity, layout pattern, and other factors, which can affect the ranges of electrical characteristics, such as characteristic values, operating margins, immunity to noise, and amount of radiated noise. When changing to a product with a different part number, implement a system-evaluation test for the given product.

Notice

1. Descriptions of circuits, software and other related information in this document are provided only to illustrate the operation of semiconductor products and application examples. You are fully responsible for the incorporation of these circuits, software, and information in the design of your equipment. Renesas Electronics assumes no responsibility for any losses incurred by you or third parties arising from the use of these circuits, software, or information.
2. Renesas Electronics has used reasonable care in preparing the information included in this document, but Renesas Electronics does not warrant that such information is error free. Renesas Electronics assumes no liability whatsoever for any damages incurred by you resulting from errors in or omissions from the information included herein.
3. Renesas Electronics does not assume any liability for infringement of patents, copyrights, or other intellectual property rights of third parties by or arising from the use of Renesas Electronics products or technical information described in this document. No license, express, implied or otherwise, is granted hereby under any patents, copyrights or other intellectual property rights of Renesas Electronics or others.
4. You should not alter, modify, copy, or otherwise misappropriate any Renesas Electronics product, whether in whole or in part. Renesas Electronics assumes no responsibility for any losses incurred by you or third parties arising from such alteration, modification, copy or otherwise misappropriation of Renesas Electronics product.
5. Renesas Electronics products are classified according to the following two quality grades: "Standard" and "High Quality". The recommended applications for each Renesas Electronics product depends on the products quality grade, as indicated below.
"Standard": Computers; office equipment; communications equipment; test and measurement equipment; audio and visual equipment; home electronic appliances; machine tools; personal electronic equipment; and industrial robots etc.
"High Quality": Transportation equipment (automobiles, trains, ships, etc.); traffic control systems; anti-disaster systems; anti-crime systems; and safety equipment etc.
Renesas Electronics products are neither intended nor authorized for use in products or systems that may pose a direct threat to human life or bodily injury (artificial life support devices or systems, surgical implantations etc.), or may cause serious property damages (nuclear reactor control systems, military equipment etc.). You must check the quality grade of each Renesas Electronics product before using it in a particular application. You may not use any Renesas Electronics product for any application for which it is not intended. Renesas Electronics shall not be in any way liable for any damages or losses incurred by you or third parties arising from the use of any Renesas Electronics product for which the product is not intended by Renesas Electronics.
6. You should use the Renesas Electronics products described in this document within the range specified by Renesas Electronics, especially with respect to the maximum rating, operating supply voltage range, movement power voltage range, heat radiation characteristics, installation and other product characteristics. Renesas Electronics shall have no liability for malfunctions or damages arising out of the use of Renesas Electronics products beyond such specified ranges.
7. Although Renesas Electronics endeavors to improve the quality and reliability of its products, semiconductor products have specific characteristics such as the occurrence of failure at a certain rate and malfunctions under certain use conditions. Further, Renesas Electronics products are not subject to radiation resistance design. Please be sure to implement safety measures to guard them against the possibility of physical injury, and injury or damage caused by fire in the event of the failure of a Renesas Electronics product, such as safety design for hardware and software including but not limited to redundancy, fire control and malfunction prevention, appropriate treatment for aging degradation or any other appropriate measures. Because the evaluation of microcomputer software alone is very difficult, please evaluate the safety of the final products or systems manufactured by you.
8. Please contact a Renesas Electronics sales office for details as to environmental matters such as the environmental compatibility of each Renesas Electronics product. Please use Renesas Electronics products in compliance with all applicable laws and regulations that regulate the inclusion or use of controlled substances, including without limitation, the EU RoHS Directive. Renesas Electronics assumes no liability for damages or losses occurring as a result of your noncompliance with applicable laws and regulations.
9. Renesas Electronics products and technology may not be used for or incorporated into any products or systems whose manufacture, use, or sale is prohibited under any applicable domestic or foreign laws or regulations. You should not use Renesas Electronics products or technology described in this document for any purpose relating to military applications or use by the military, including but not limited to the development of weapons of mass destruction. When exporting the Renesas Electronics products or technology described in this document, you should comply with the applicable export control laws and regulations and follow the procedures required by such laws and regulations.
10. It is the responsibility of the buyer or distributor of Renesas Electronics products, who distributes, disposes of, or otherwise places the product with a third party, to notify such third party in advance of the contents and conditions set forth in this document, Renesas Electronics assumes no responsibility for any losses incurred by you or third parties as a result of unauthorized use of Renesas Electronics products.
11. This document may not be reproduced or duplicated in any form, in whole or in part, without prior written consent of Renesas Electronics.
12. Please contact a Renesas Electronics sales office if you have any questions regarding the information contained in this document or Renesas Electronics products, or if you have any other inquiries.

(Note 1) "Renesas Electronics" as used in this document means Renesas Electronics Corporation and also includes its majority-owned subsidiaries.

(Note 2) "Renesas Electronics product(s)" means any product developed or manufactured by or for Renesas Electronics.



SALES OFFICES

Renesas Electronics Corporation

<http://www.renesas.com>

Refer to "<http://www.renesas.com>" for the latest and detailed information.

Renesas Electronics America Inc.

2801 Scott Boulevard Santa Clara, CA 95050-2549, U.S.A.
Tel: +1-408-588-6000, Fax: +1-408-588-6130

Renesas Electronics Canada Limited

9251 Yonge Street, Suite 8309 Richmond Hill, Ontario Canada L4C 9T3
Tel: +1-905-237-2004

Renesas Electronics Europe Limited

Dukes Meadow, Millboard Road, Bourne End, Buckinghamshire, SL8 5FH, U.K.
Tel: +44-1628-585-100, Fax: +44-1628-585-900

Renesas Electronics Europe GmbH

Arcadiastrasse 10, 40472 Düsseldorf, Germany
Tel: +49-211-6503-0, Fax: +49-211-6503-1327

Renesas Electronics (China) Co., Ltd.

Room 1709, Quantum Plaza, No. 27 Zhichunlu Haidian District, Beijing 100191, P.R.China
Tel: +86-10-8235-1155, Fax: +86-10-8235-7679

Renesas Electronics (Shanghai) Co., Ltd.

Unit 301, Tower A, Central Towers, 555 Langao Road, Putuo District, Shanghai, P. R. China 200333
Tel: +86-21-2226-0888, Fax: +86-21-2226-0999

Renesas Electronics Hong Kong Limited

Unit 1601-1611, 16/F., Tower 2, Grand Century Place, 193 Prince Edward Road West, Mongkok, Kowloon, Hong Kong
Tel: +852-2265-6688, Fax: +852 2886-9022

Renesas Electronics Taiwan Co., Ltd.

13F, No. 363, Fu Shing North Road, Taipei 10543, Taiwan
Tel: +886-2-8175-9600, Fax: +886 2-8175-9670

Renesas Electronics Singapore Pte. Ltd.

80 Bendemeer Road, Unit #06-02 Hyflux Innovation Centre, Singapore 339949
Tel: +65-6213-0200, Fax: +65-6213-0300

Renesas Electronics Malaysia Sdn.Bhd.

Unit 1207, Block B, Menara Amcorp, Amcorp Trade Centre, No. 18, Jln Persiaran Barat, 46050 Petaling Jaya, Selangor Darul Ehsan, Malaysia
Tel: +60-3-7955-9390, Fax: +60-3-7955-9510

Renesas Electronics India Pvt. Ltd.

No.777C, 100 Feet Road, HALI Stage, Indiranagar, Bangalore, India
Tel: +91-80-67208700, Fax: +91-80-67208777

Renesas Electronics Korea Co., Ltd.

12F., 234 Teheran-ro, Gangnam-Gu, Seoul, 135-080, Korea
Tel: +82-2-558-3737, Fax: +82-2-558-5141

RTK00V2X720MTORS7J
User's Manual: Hardware

Publication Date: Rev. 1.1 Aug. 29, 2017

Published by: Renesas Electronics Corporation

RTK00V2X720MTORS7J