

**BYTECH**<sup>®</sup>  
THE ART OF TECHNOLOGY

BY-AU-BS-185-WT



**MULTICOLOR DISCO**  
**MUSIC BULB SPEAKER**

Thank you for purchasing Multicolor Music Bulb Speaker.  
Enjoy your music wirelessly throughout your home.

**SPECIFICATIONS**

- Voltage 100-240V/50-60Hz
- Power 3W
- Frequency Response 50-60Hz

**FEATURES**

- Indoor bulb casts gorgeous multicolor lights
- Great for bars, parties, and dancing
- 360° Rotation
- Easy to install
- This bulb fits a standard light socket

**PACKAGE CONTENTS**

- 1 (One) Disco Bulb Speaker 6.9in. x 3.8in. x 3.8in. (17.5cm x 9.6cm x 9.6cm)
- 1 (One) Wireless Remote 3.25in. x 2in. x .2in. (8.25cm x 5.1cm x .5cm)
- 1 (One) User Manual

**CONNECT TO SMART DEVICE**

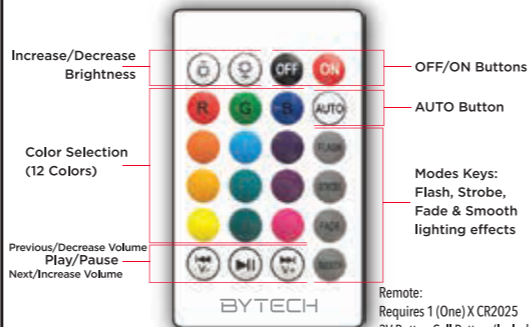
Step 1: Connect with one Bluetooth smart device at a time. More than one smart device can be used at separate times.

Step 2: Go to your Bluetooth settings on your smart device. Once the Multicolor Music Bulb Speaker is installed, you will see pairing name "BY-BS-185" in the setting. Tap to connect.

**NOTICE: IF YOU CANNOT CONNECT TO BLUETOOTH THEN ANOTHER DEVICE IS CURRENTLY PAIRED. TURN OFF MULTICOLOR MUSIC BULB SPEAKER AND TURN ON AGAIN. OPEN BLUETOOTH TO CONNECT DEVICE.**

Compatible with E26 bulb socket.

**REMOTE**



Remote:  
Requires 1 (One) X CR2025  
3V Button Cell Battery (Included).

**MODES**

1. Select one of the "Mode" buttons for your desired effect. You will be able to switch between different lighting effects.
2. To adjust brightness of colored lights, press the "Brightness" buttons.
3. To change color, use the "Color Selection" buttons.
4. For autoflashing all the lights, use the "AUTO" button.

**MUSIC**

Press **||** to PLAY/PAUSE music.

Press **⏮** for PREVIOUS song. Press **⏭** for NEXT song.

Long press **V-** to decrease VOLUME. Long press **V+** to increase VOLUME.

**PRIOR TO INITIAL USE OF REMOTE:**  
Remove the protective plastic strip in the battery compartment. Remote is ready to use.

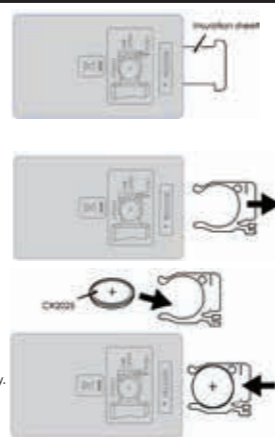
**REPLACING THE BATTERY IN REMOTE:**

Remove the battery compartment by pressing the left hand tab to the right and pulling the compartment outward.

Insert a new CR2025 battery into the compartment by matching the correct polarity. Replace the battery compartment by sliding it back into the remote until it clicks.

**For CR2025 Button Cell Lithium Battery:**

- ⚠ WARNING: TO AVOID BATTERY LEAKAGE**
- 1) The battery used with this product is small parts and should be kept away from small children who still put things in their mouths. If they are swallowed, promptly see a doctor and have the doctor phone American Association of Poison Control Centers (1-800-222-1222).
  - 2) Always purchase the correct size and grade of battery most suitable for intended use.
  - 3) Clean the battery contacts and those of the device prior to battery installation.
  - 4) Ensure the battery are installed correctly with the regard to polarity (+ and -).
  - 5) Always remove battery if consumed or if product is to be left unused for a long time.



Any Changes or modifications not expressly approved by the party responsible for compliance could void the user's authority to operate the equipment.

This device complies with part 15 of the FCC Rules. Operation is subject to the following two conditions:

- (1) This device may not cause harmful interference, and
- (2) this device must accept any interference received, including interference that may cause undesired operation.

**⚠ WARNING**

**IMPORTANT SAFETY INFORMATION**

Read all instructions and notices before installation. No user serviceable parts inside. To avoid electrical shock do not disassemble product. This product is not intended for use in emergency light fixtures or exit signs. Not for use where exposed directly to the weather or water.

**⚠ CAUTION**

Turn power off before inspection, installation or removal. Use 100-240 VAC, 60Hz circuits.

Note: This equipment has been tested and found to comply with the limits for a Class B digital device, pursuant to part 15 of the FCC Rules. These limits are designed to provide reasonable protection against harmful interference in a residential installation. This equipment generates, uses and can radiate radio frequency energy and, if not installed and used in accordance with the instructions, may cause harmful interference to radio communications. However, there is no guarantee that interference will not occur in a particular installation. If this equipment does cause harmful interference to radio or television reception, which can be determined by turning the equipment off and on, the user is encouraged to try to correct the interference by one or more of the following measures:

- Reorient or relocate the receiving antenna.
- Increase the separation between the equipment and receiver.
- Connect the equipment into an outlet on a circuit different from that to which the receiver is connected.
- Consult the dealer or an experienced radio/TV technician for help.

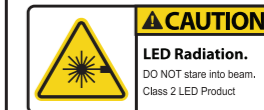
**FCC Radiation Exposure Statement:**

This equipment complies with FCC radiation exposure limits set forth for an uncontrolled environment. This equipment should be installed and operated with minimum distance 20cm between the radiator & your body.

**WARRANTY- 12 MONTH**

Please visit our website [Bytechintl.com/warranty](http://Bytechintl.com/warranty)

\*All Trademarks and copyrights are the property of the respective companies.  
\*Photos are for illustration purposes only.  
\*CLASS 2 LED PRODUCT



**BYTECH**

Contact Info:  
2585 West 13th Street,  
Brooklyn, NY 11223  
[Bytechintl.com](http://Bytechintl.com)  
© 2022 BYTECH NY INC.  
FCC CE

**FCCID: 2AHN6-AUBS185**