

Receiving a Call

When the incoming call is arrived, videophone begins to play the bell sounds and the following animation is shown on the LCD screen. Also, this shows the phone number of the other party.

- Pick up your handset as usual.
- Press 'SPEAKER', in which case you get into the speakerphone mode.



Rejecting a Call

- Press '#' key to reject a call

Dropping the call

- Hang up your handset.
- If you are in speakerphone mode and the handset is already put on the phone, press 'SPEAKER'.

Answering to a call automatically

What is AutoAnswering mode ?

In the auto-answering mode, the incoming call will be picked up automatically after ringing the predefined times. After receiving the call, the voice message would be sent repeatedly for about 20 seconds and the call will be disconnected automatically. If you pick up the call while sending the voice message, you can begin to talk to the other party.

Setting AutoAnswering mode

You can set the auto-answering mode in 'Setting' of PIMS Menu and define how many times the ringing will be played before accepting a call and the password for the destination to get a local video and audio information.

NOTE Refer to the [Preference Setting(29p)] to get detail instructions.

17

Monitoring local views

If the destination sends the password via user input message before the call is disconnected, the videophone begins to send the local video and audio information. If the receiving password is not matched with yours, the call is disconnected immediately. With this function, you are able to monitor the local situation at the remote place.

NOTE In order to make use of this monitoring feature, the videophone of caller should be able to send a user input message.

NOTE The method of sending the short message in the videophone is described in [Short Message Service (SMS)(23p)].

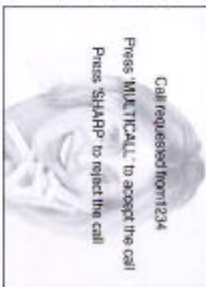
Multi-Call

Videophone is able to connect to the 2 calls concurrently. While communicating with one call, the other call is hold.

Accepting another call during a call

The incoming new call can be reported at the LCD while you're in a call. If you want to accept that call, press 'MULTICALL'. Then the call you've already connected would be hold while you get the new call.

NOTE The maximum number of concurrent calls is 2.



Rejecting another call during a call

The incoming new call can be reported at the LCD while you're in a call. If you don't want to get the new call, press '#(REJ)' key.

Switching between the 2 calls

When you are connected to 2 calls, press 'MULTICALL' to switch the current call to the behind call.

NOTE To prevent from switching the calls too often, the videophone ignores the switching operation occurred in 3 seconds.

18

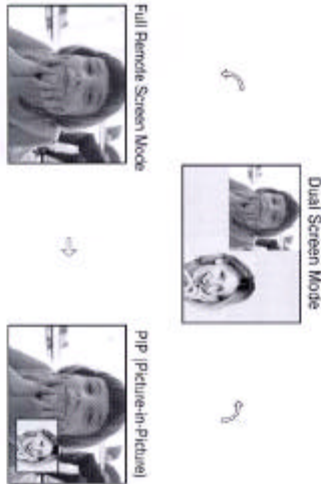
19

- Dropping calls**
- If you press #(REDJ) when you are in 2 calls, the current call gets to finish and the behind call is activated.
 - If you want to hang up the behind call, you have to activate the behind call by pressing 'MULTICALL' at first and press #(REDJ).
 - If you put the handset on the phone, both of 2 calls are disconnected.

Function Key Control while video talking

DISPLAY

Press "DISPLAY" Key to switch the screen mode and size of the video displayed on your LCD screen. The display mode will be switched as following sequence.



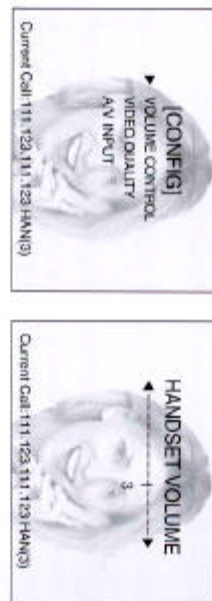
MUTE
 Press "MUTE" to prevent the remote side from hearing your voice. "MUTE" message will be appeared at LCD screen and mute sound be played.
 If you want to deactivate MUTE, press "MUTE" key again

PRIVACY

Press "PRIVACY" key to block your outgoing image to the remote side. The logo image will be displayed instead of your image at remote side during the privacy mode.
 If you want to deactivate privacy mode, press "PRIVACY" key again.

20

- Volume Control**
- 1 You can control the handset volume by pressing ▲▼ during a call. The volume value is shown within the status message in LCD screen.
 - 2 You can control the handset volume in the control menu during a call.

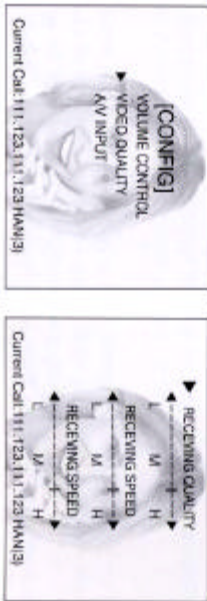


- Press "ENT" key to bring up the control menu.
- Use the up/down(▲▼) arrow key on the keypad to move the pointer. In order to make your selection, press "ENT" key. If you wish to exit, press "EXIT".
- In VOLUME CONTROL menu, select HAND-SET VOLUME with the right/left(▶◀) arrow key.
- When you finish with your selection, press "EXIT" twice to exit the control menu.

NOTE You can't enter VOLUME CONTROL menu at speakerphone mode. Speaker Volume in Speaker Phone Mode is a fixed value. The modified values will be applied to the next calls.

Video Quality Control

You can control the quality and speed of the incoming video stream. In case that the video quality of the other side is not good enough while video talking, you can control the peer's video quality or speed so that you can get better images of the peer.



- Press 'ENT' key to bring up the control menu.
- Use the up/down(▲▼) arrow key on the keypad to move the pointer. In order to make your selection, press 'ENT' key. If you wish to exit, press 'EXIT'.
- You can choose the values that you want by using ◀▶ after selecting the sub menu by moving the point with ▲▼.
- ① Receiving Quality : The higher the value is, the better the quality of the receiving video is.
NOTE When you select the better quality, the frame rate might be lower than before.
- ② Receiving Speed: The higher the value is, the wider the bandwidth would be used. It means the movement of the other party looks more natural.
NOTE When the receiving speed is high, the image of the other party and the image of you at the destination could be broken. In this case, the receiving speed needs to be lowered.
- ③ Sending Speed : The higher the value is, the wider the bandwidth would be used. It means the movement of you looks more natural.
NOTE When the sending speed is high, the image of the other party and the image of you at the destination could be broken. In this case, the sending speed needs to be lowered.
- When you want to go back to Main Screen, press 'EXIT' key or 'ENT' key to save your selection result. Only after your selection result is saved, the new setting will be applied
- When you complete a selection, press 'EXIT' key twice to exit the Graphic menu.



Audio/Video External I/O Setting

You can change the input path of audio and video during a call.



- Press 'ENT' key to bring up the control menu.
- Use ▲▼ on the keypad to move the pointer. In order to make your selection, press 'ENT' key. If you wish to exit, press 'EXIT'.
- You can choose the values that you want by using ▶▶ after selecting the sub menu by moving the point with ▲▼.
- ① VIDEO INPUT: In video input menu, 'INT' means internal video input path and 'EXT' means external video input path and videophone starts to receive the video data from an external camera.
NOTE If the external camera is not connected to the videophone while the external I/O path selected, the receiving video at the destination would be broken. For the external video output, you can see what you see on the LCD screen at external device such as TV or LCD monitor as long as it is connected to the external jack of the videophone without special setting.
- ② AUDIO INPUT: In audio input menu, 'INT' means internal audio input path and 'EXT' means external audio input path and videophone starts to receive the audio data from an external speaker.
NOTE If the external speaker is not connected to the videophone while the external I/O path selected, and any voice would not be heard at the destination. For the external audio output, you can hear what you hear from the videophone through external speaker as long as it is connected to the external socket of the videophone without special setting.
- When you want to go back to Main Screen, press 'EXIT' key or 'ENT' key to save your selection result. Only after your selection result is saved, your activity up to now will be applied
- When you complete a selection, press 'EXIT' key twice to exit the Graphic menu.

Speaker Phone Mode

- Press "SPEAKER" key to turn on and off the speakerphone mode when you already picked up the handset.
- If you want to deactivate the speakerphone mode, press "SPEAKER" key again

NOTE In a speakerphone mode, the videophone keeps the call even when you put the handset on the videophone.

NOTE If you press "SPEAKER" in a speakerphone mode and the handset is put on the videophone, the call is disconnected.

Short Message Service (SMS)

- You can exchange the short messages during a call.

1 Sending a short message

- Press "*" (SMS) key to send a short message then the display will be changed into the GUI mode like as following picture
- Make a message. The character input method is described in [How to input a character(24p)]
- If you want to send the message, press "ENT" key.
- If you want to cancel to send the message, press "EXIT". If the length of the message is 0, the message won't be sent.

NOTE While input a message, Videophone keeps sending the outgoing stream of your image even though this is not appeared in LCD screen.

- 2** Receiving a short message
- Whenever the destination sends a short message, the message will be appeared like as following picture.
 - Press any key to exit this mode.

3. Personal Information Management System

Using Keypad in PIMS

- Numeric key** Input a character to make a sentence
- 1aA** Select the sort of fonts to input (numeric/lowercase/capital)
- TAB** Move among the URL links and URL input window on the browser screen.
- Move to the submenu when using mail functions.
- Move to the previous menu while not in a call
- EXIT** Show the tips on how to handle the PIMS menus
- HELP** Enter to the PIMS menu while not in a call and save the control values after modifying the setting in PIMS menu.
- ENT** Move between the PIMS menus while not in a call
- Arrow Key** Select the setting value in each item in PIMS menu. Enter into the edit mode of each item within Phone Book and Call Log of PIMS menu.

How to input a character

Choose the fonts that you want to use by pressing '1aA'. The fonts will be one among 'numeric', 'lowercase letter' and 'capital letter'. The current input fonts are indicated on right bottom of LCD screen.

- 1** Input a number
 e.g) In case to input "123"
 • Set the fonts as 'TAB : Num' or **1** by using '1aA'.
 • Press '1', '2', '3' successively.
- 2** Input a word
 e.g) In case to input "sky"
 • Set the fonts as 'TAB : eng' or **A** by using '1aA'.
 • Input 's' by pressing '7' for 4 times. ('7', '7', '7', '7')
 • Input 'k' and 'y' as same way as above ('5', '5', '9', '9', '9', '9')
- 3** Input a mixed word
 e.g) In case to input "123.com"
 • Set the fonts as 'TAB : eng' or **1** by pressing '1aA'.
 • Press '1', '2', '3' successively.
 • Input dot(.) by pressing '#'.
 • Set the fonts as 'TAB : eng' or **A** by pressing '1aA'.
 • Input 'c', 'o', 'm' as same way as above ('2', '2', '2', '6', '6', '6', '6')

Speaker Phone Mode

- Press 'SPEAKER' key to turn on and off the speakerphone mode when you already picked up the handset.
- If you want to deactivate the speakerphone mode, press 'SPEAKER' key again

NOTE In a speakerphone mode, the videophone keeps the call even when you put the handset on the videophone.

NOTE If you press 'SPEAKER' in a speakerphone mode and the handset is put on the videophone, the call is disconnected.

Short Message Service (SMS)

- You can exchange the short messages during a call.

1 Sending a short message

- Press '*' (SMS)' key to send a short message then the display will be changed into the GUI mode like as following picture
- Make a message. The character input method is described in [How to input a character(24p)].
- If you want to send the message, press 'ENT' key.
- If you want to cancel to send the message, press 'EXIT'. If the length of the message is 0, the message won't be sent.

NOTE While input a message, Videophone keeps sending the outgoing stream of your image even though this is not appeared in LCD screen.

- 2 Receiving a short message
- Whenever the destination sends a short message, the message will be appeared like as following picture.
 - Press any key to exit this mode.

3. Personal Information Management System

Using Keypad in PIMS

- Numeric key** Input a character to make a sentence
- TAB** Select the sort of fonts to input (numeric/lowercase/capital)
- TAB** Move among the URL links and URL input window on the browser screen.
- Move to the submenu when using mail functions.
- Move to the previous menu while not in a call
- EXIT** Show the tips on how to handle the PIMS menus
- HELP** Enter to the PIMS menu while not in a call and save the control values after modifying the setting in PIMS menu.
- ENT** Move between the PIMS menus while not in a call
- Move between the PIMS menus while not in a call
- Select the setting value in each item in PIMS menu.
- Enter into the edit mode of each item within Phone Book and Call Log of PIMS menu.
- Arrow Key**

How to input a character

Choose the fonts that you want to use by pressing 'TAB'. The fonts will be one among 'numeric', 'lowercase letter' and 'capital letter'. The current input fonts are indicated on right bottom of LCD screen.

- 1 Input a number
 e.g) in case to input "123"
 • Set the fonts as 'TAB : Num' or 1 by using 'TAB';
 • Press '1', '2', '3' successively.
- 2 Input a word
 e.g) in case to input "sky"
 • Set the fonts as 'TAB : eng' or A by using 'TAB';
 • Input 's' by pressing 'T' for 4 times. ('T', 'T', 'T', 'T')
 • Input 'k' and 'y' as same way as above ('5', '5', '9', '9', '9', '9')
- 3 Input a mixed word
 e.g) in case to input "123.com"
 • Set the fonts as 'TAB : eng' or 1 by pressing 'TAB';
 • Press '1', '2', '3' successively.
 • Input dot(.) by pressing '#';
 • Set the fonts as 'TAB : eng' or A by pressing 'TAB';
 • Input 'c', 'o', 'm' as same way as above ('2', '2', '2', '6', '6', '6', '6', '6')

Main menu

Whenever you are not in a call, press 'ENT' to bring up the PIMS menu screen. The top level of menus consists of 5 submenus like as 'Phonebook', 'Call Log', 'Internet', 'Set', 'IP'.



▶▶ let you to move among main menus (Phonebook→Call Log→Internet→Setting→IP (or in reverse order)). When focusing on a menu, the tab color of the current menu gets to blue. In this state, you can enter into the inner menus by pressing 'ENT' or ▼.

If you want to quit the PIMS, press 'EXIT'.

Phonebook	<ul style="list-style-type: none"> • Make your own phonebook. • Direct call to the destination.
Call Log	<ul style="list-style-type: none"> • Check the recent phone numbers made/received. • Direct dial the recent numbers made/received.
Internet	<ul style="list-style-type: none"> • Open the cHTML web browser and access the web. • Read and send a mail. • Set bell type and volume. • Set auto answering options. • Set current date and time. • Set the input path of audio/video. • Upgrade the videophone software from the remote server. • Set the GUI skin by selecting the language. • Initialize the PIMS settings. • Set the default network configuration. • Set the VoIP service options – Gatekeeper, account name, phone number. • Set the DNS address and MAC address. • Set the mail configuration. • Show the current IP.
IP	

29

Phonebook

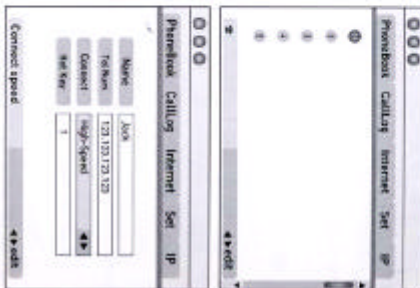
You can store the frequently used phone numbers and dial it directly from the phonebook menu. Videophone can memorize up to 30 names and numbers.

Use ▶▶ to select 'Phonebook' menu and press 'ENT' or ▼ key to start Phonebook function.

① Making an entry

- Select the entry number by using ▲▼ and press ▶▶ or 'ENT'. The registration form for the entry is appeared and the current input field is indicated with its yellow window.
- After input the name of the entry, press ▼ in order to set the phone number and input the number.
- Move to the 'Speed' field by pressing ▼ and set the target accessing speed for that destination by using ▶▶ (low/mid/high)
- Press 'EXIT' to exit the menu function or go back to prior step.

NOTE If you want to delete an entry, clear the whole fields after opening the input form window for that entry.



② Calling directly

- Select the target entry with ▲▼ in 'Phonebook'. You can check the existing numbers from the status bar at lower side of LCD screen.
- Press 'ENT' key to dial directly then the LCD screen will change to the dial out screen.



20

Call Log

The phone number lists you've made lately or received are listed up to 10 in CallLog Menu. There is a sending list, a reception list and a reception list in absence.

Use **▶▶** to select 'CallLog' menu and press 'ENT' or **◀** to start CallLog function. You can see 'CallLog' icon on the status bar.

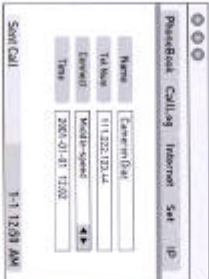


- 1 Sent Call
 - Select 'Sent Call' by using **▶▶** and pressing **▶▶** or 'ENT' brings the call lists made recently.
 - In order to see the detail contents of each item, press **▶▶**. Then you can check the name and phone number of destination and the time when the call made.
 - Press 'EXIT' to exit the menu function or go back to prior step



- 2 Received Call
 - Select 'Received Call' by using **▶▶** and pressing **▶▶** or 'ENT' brings the call lists made recently.
 - In order to see the detail contents of each item, press **▶▶**. Then you can check the name and phone number of destination and the time when the call made.
 - Press 'EXIT' to exit the menu function or go back to prior step

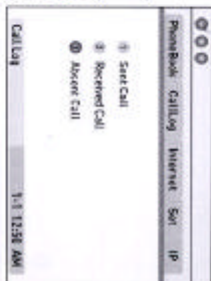
Calling directly from the sent call list
 Select the target entry with **▶▶** in 'Sent Call'. Press 'ENT' key to dial directly then the LCD screen will change to the dial out screen.



- 3 Absent Call
 - Select 'Absent Call' by using **▶▶** and pressing **▶▶** or 'ENT' brings the call lists made recently.
 - In order to see the detail contents of each item, press **▶▶**. Then you can check the name and phone number of destination and the time when the call made.
 - Press 'EXIT' to exit the menu function or go back to prior step



Calling directly from the received call list
 Select the target entry with **▶▶** in 'Received Call'. Press 'ENT' key to dial directly then the LCD screen will change to the dial out screen.



Calling directly from the absent call list
 Select the target entry with **▶▶** in 'Absent Call'. Press 'ENT' key to dial directly then the LCD screen will change to the dial out screen.

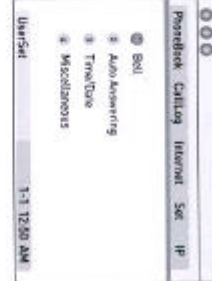
Internet

The HTML web browser and mail client module are embedded in the videophone. You can access the web with the cHTML micro browser. Also you can read and send a mail with the mail client module. For detail instruction, refer to the 4. Internet Browser and 5. E-Mail.

Set/Preference Setting/

You can choose the PIMS settings to your preference. The settings are Time/Date set, a Bell option, Auto Answering options, a Video/Audio Input path option, software upgrade, language selection and a system initialization.

Use **▶▶** to select 'Set' menu and press 'ENT' or **▶** to start Set function



Bell	<ul style="list-style-type: none"> Select the type of bell. Select the volume of bell.
Auto Answering Mode	<ul style="list-style-type: none"> Set the auto answering mode Set the password for monitoring.
Time/Date	<ul style="list-style-type: none"> Set the current date and time.
In/Out	<ul style="list-style-type: none"> Set AV Input path
SW Version	<ul style="list-style-type: none"> Check the latest version of software from the server. Download new software if needed
Misc.	<ul style="list-style-type: none"> Select a language that user is familiar with. Initialize the PIMS information.
Language	
Init. System	

1 Bell Setting

- Press **▶▶** to select Bell in the Set Menu and press **▶▶** or 'ENT'.
 - In 'Bell', select the ringing sound among 4 different kinds of ringing sounds by using **▶▶**. Move down to 'Volume' with **▶** or 'ENT'.
 - Select the volume of the ringing sound in 'Volume' by using **▶▶**. The volume can be one of 5 levels.
 - Press 'EXIT' to exit the menu function or go back to prior step
- NOTE** In case that the volume is set as '0', the ringing sounds won't be played.

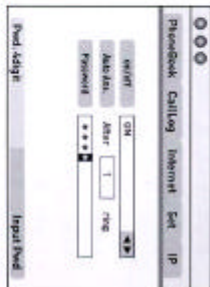
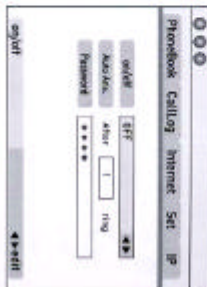
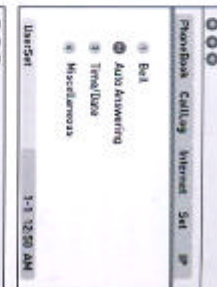


2 Auto answering mode

- Press **▶▶** to select Auto Answering in the Set Menu and press **▶▶** or 'ENT'.
- If you want to turn on the 'Auto Answering mode', set 'ON' in 'On/Off' with **▶▶**. Move down to 'Auto Ans.' with **▶** or 'ENT'. Otherwise, select 'OFF' for 'On/Off' field.
- In 'Auto Ans.', select the ringing count using **▶▶** or input the number between 0 and 5. Move down to 'Password' with **▶** or 'ENT'.
- Input a password using digit key. Note that the password has to be made up with exactly 4 digits. Then the password will be appeared as '.....'.
- After set the password first, 'Input again' message is appeared to confirm the password. Then input the password again. If the two passwords are matched, the password setting is completed successfully, otherwise the new password won't be applied.
- Press 'EXIT' to exit the menu function or go back to prior step

NOTE If 'On/Off' set 'OFF', the 'Auto Ans.' field and 'password' will be deactivated.

NOTE If the password for second time is not matched with the first password, then 'Incorrect - Input again' message will be displayed.

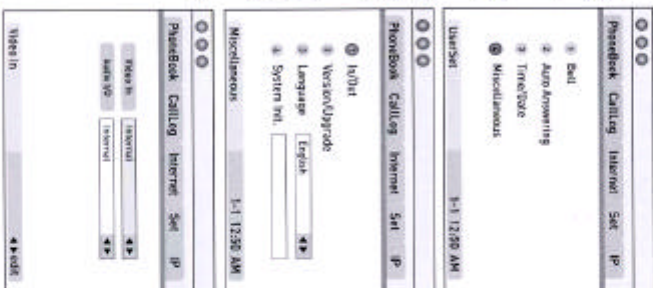


31

- ③ Time/Date Setting
- Press ▲▼ to select Time/Date in the Set Menu and press ►► or ENT.
 - Press ►► to make each sub item selected. In the target edit window, you can choose the appropriate value using ▲▼.
 - Press 'EXIT' to exit the menu function or go back to prior step



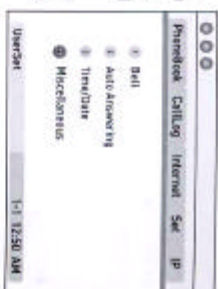
- ④ AV Input Path Setting
- Press ▲▼ to select Miscellaneous in the Set Menu and press ►► or ENT. You can see the submenus for setting advanced options.
 - Press ▲▼ to select In/Out in the Miscellaneous Menu and press ►► or ENT.
 - Press ►► or ENT to move down to 'Video In' menu. Set whether the input path of video data will be internal or external by using ►►.
 - Press ►► to move down to 'Video In' menu. Set whether the input path of audio data will be internal or external by using ►►.
 - Press 'EXIT' to exit the menu function or go back to prior step.



⑤ Upgrading the software
NOTE For detail description of upgrading procedure, refer to 6. Remote Upgrade.

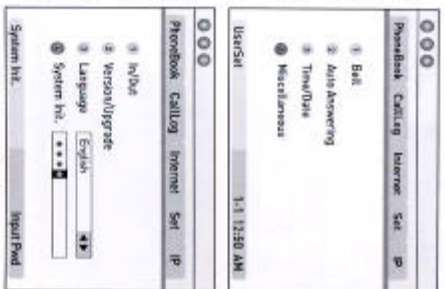
- ⑤ Language Setting
- Press ▲▼ to select Miscellaneous in the Set Menu and press ►► or ENT. You can see the submenus for setting advanced options.
 - Press ▲▼ to select Language in the Miscellaneous Menu and select the language by pressing ►►.
 - Press 'EXIT' to exit the menu function or go back to prior step.

NOTE This item is only working for the German Language and French Language.



- ⑦ System Initialization
- Press ▲▼ to select Miscellaneous in the Set Menu and press ►► or ENT. You can see the submenus for setting advanced options.
 - Select System Init. in the Set Menu by using ▲▼ and press ENT.
 - Input the password and press 'ENT' to initialize the system.
 - When the password is right, the message "Initialize system" is shown and the system begins to initialize the system. When the password is incorrect, the message "Incorrect password. Input the pwd again." will be displayed.
 - Press 'EXIT' to exit the menu function or go back to the prior step.

NOTE Initializing the system means clearing all settings you've configured before. Please, be careful to use this function.



32

