

# Session Player



## 사용자 메뉴얼

## User's Guide

**CONTENTS**

- 1. **What is a Session Player** .....
- 2. **Accessories and System Requirements** .....
- 3. **Names of Each Part** .....
- 4. **Install Session Manager** .....

  - 1. Install USB Driver
  - 2. Install Session Manager
  - 3. Getting Start Session Manager & Modification / Uninstallation

- 5. **Run Session Manager** .....

  - 1. The structure of Main menu
  - 2. The Function Details

- 6. **The Name of LCD Screen and the Functions** .....

  - 1. The Name of LCD Screen
  - 2. The Functions of Key

- 7. **SESSION & E-BOOK** .....
- 8. **AUDIO** .....
- 9. **SYSTEM** .....

  - 1. Setup
  - 2. My Information
  - 3. Album
  - 4. Calculator
  - 5. Calendar
  - 6. Contacts
  - 7. File Data
  - 8. Game
  - 9. Memo
  - 10. Recorder
  - 11. Time Zone

- 10. **Troubleshooting** .....
- 11. **Warranty Card** .....

1. What is a Session Player?

Session Player is a portable, convenient, variety multimedia product. Session Player has the functions of running multi functions such as showing animation, playing audio and displaying text. Hence, you can enjoy it and can utilize the Session Player to the various purposes.

Session Player has the functions of MP3 player and electric book, photo album, memorandum, address book. Especially Voice Recorder helps you to record any sound easily what you want to preserve.

**(A) General Features**

**<Session Player>** This is the main function of the Session Player. It can handle animation, playing audio and displaying text at the same time.

**<MP3 Player>** This function is the same as that of MP3 player. So you can enjoy music by handling as same way as you did with your MP3 player and can manage your MP3 files in album. Downloading your music to the Session Player is available through a built-in USB port.

**<E-Book>** This is a similar function as general e-book has. You may dump some novels and articles and books into the Session Player. You can access the contents easily anytime.

**<Voice Recorder>** Even you are enjoying another kind of utilities, pressing a record button is enough for recording. You can play back it on the multimedia.

**(B) Additional Features**

**<Memo Pad>** You can use the Session Player as a memo pad using memorandum function.

**<Photo Album>** The Session Player serves for the photo album. Download your favorite pictures into the Session Player and enjoy the picture anytime, anywhere.

**<Address Book>** The Session Player provides you an address book. You can classify contact points into group as well.

**<Calculator and Calendar>** The Session Player has functions of calculator and calendar. For the calculator, it is same as the general calculator and the calendar will show you date and week between year 1971 and year 2100.

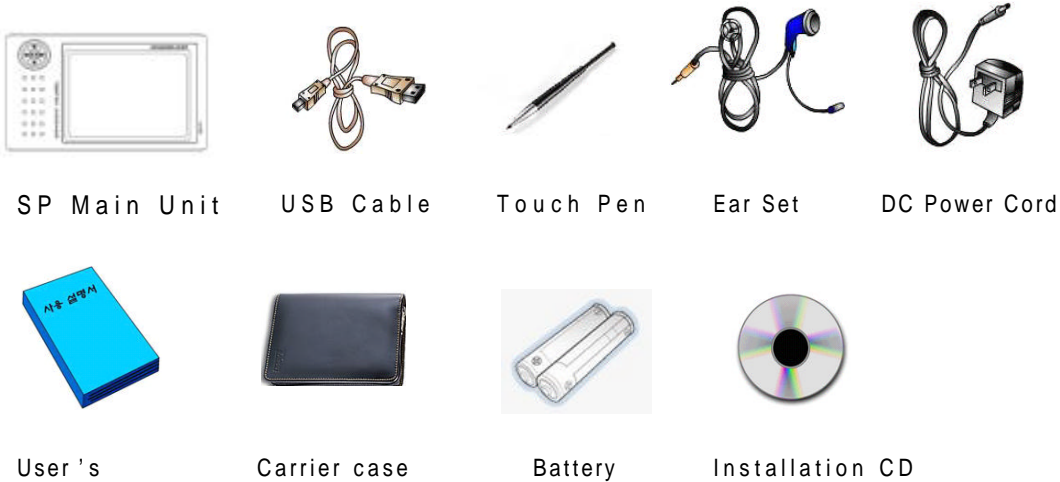
**<Time Zone>** You can check the standard time for the major cities in the world. It is very convenient for the business and contact with your acquaintances in foreign countries.

**<Game>** Game function enhances your power of memory. Find a pair of words in antonym and synonym.

2. Checking the Provided Accessories and The System Requirements

**1. Checking the Provided Accessories**

Please make sure the followings are packed in a box when purchase. If you find any missing item, please ask shop.



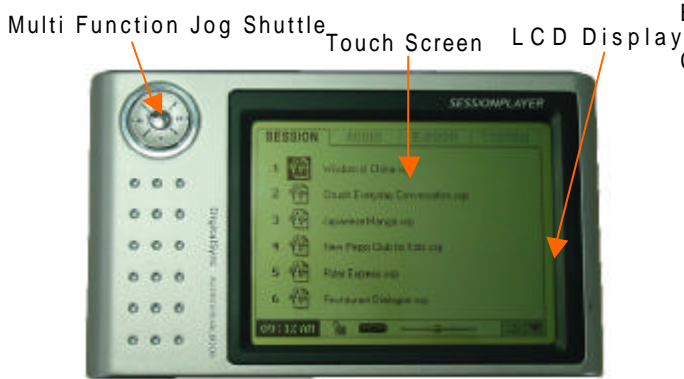
**2. System Requirements**

	Minimal	Recommend
CPU	Pentium 133 MHz	Pentium II MMX 200 MHz
RAM	32 MB	64 MB
HDD	Require 40MB or more disk space	
DRIVE	One or more CD-ROM Drive	
USB	One or more USB port	
O/S	Microsoft Windows 98/ME/2000/XP	

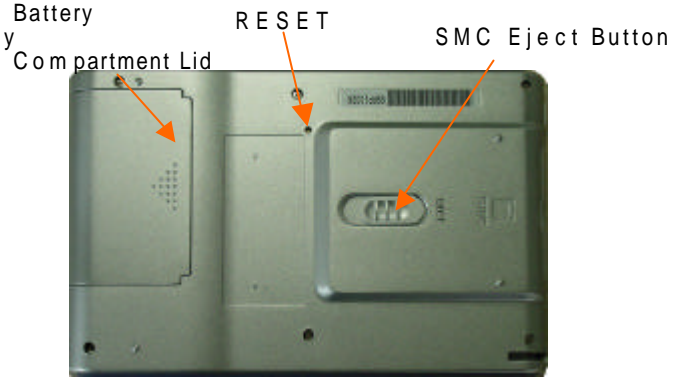
3. Names Of Each Part

1. Names of Each Part

(1) Front View



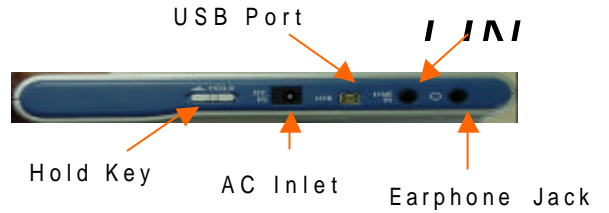
(2) Rear View



(3) Upper View



(4) Bottom View



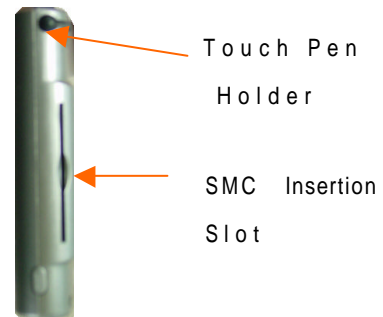
(5) Left Side View



AA Size  
 Alkaline Battery

. Power ON/OFF,  
 . B. Light ON/OFF

(6) Right Side View



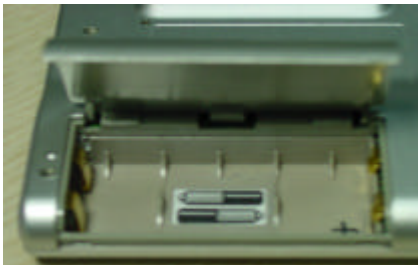
## 2. POWER

- (1) Turn On: Press "PWR" button located left upper side of Multi-Function joggle.
- (2) Turn Off: Press "PWR" button shortly.
- (3) Turn On Back Light: During operation, press "PWR" button for 2 seconds or more.
- (4) Turn Off the Back Light: Under the Back Light is turned on, press "PWR" button for 2 seconds or more. Back Light can be controlled at the "Setup" menu in "System" Folder.
- (5) Power Saving: "Auto Power Off" Menu at "Setup" in "System" Folder can be used for the Power Saving purpose. The number of this menu means the time to power off. That is, if you set this 10min, power is off automatically if there was no operation during 10 minutes. (Available value : 1, 2, 3, 5, 10, 30 minutes)

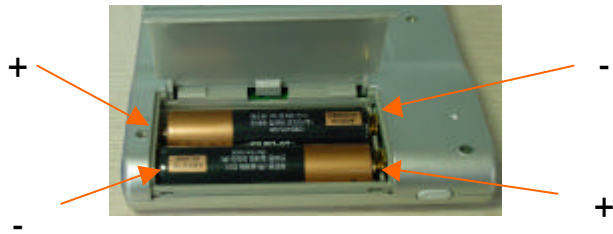
<NOTE> \* When Hold is positioned at ON, no function is performed except Power On.

## 3. Settlement of Battery

(1) Open the battery compartment lid.



(2) Insert batteries as same direction as indicated in the picture.



## 4. Smart Media Card (SMC)

(1) To Insert

Place Gold plate side upward and insert.



(2) To Remove

Slide EJECT switch to the reverse direction



**CAUTION**

Insert a SMC into the slot perfectly, otherwise SMC is not recognized by Session Player.  
For the virgin SMC, initialization is necessary. You can format a new SMC using Session Manager Program.  
Due to the Copyright Act's term for a recording, MP3 files in SMC can not be played back on the other MP3 player. So you should initialize SMC according to the hardware.

**5. Adjust touching point for a touch screen**

- (1) Pressing RESET hole with touch pen lets Session Player enter to the adjusting mode to measure accuracy of touching point.
- (2) Touching the center of cross cursor precisely in Fig1 to Fig3, you can see a finishing screen as Fig. 5 and then changed to a normal screen.
- (3) If there was mis-touching the center of cross cursor, you can see an error screen as Fig4 and then a screen is changed to the Fig1 to repeat adjustment procedure. This procedure will circulate until success.
- (4) Adjustment of touching screen is performed when you update your Session Player with the new version.

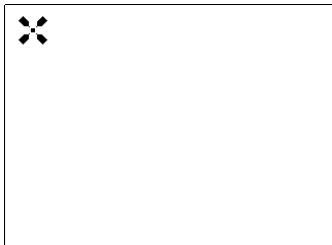


Fig 1



Fig 2

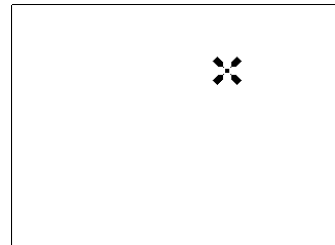


Fig 3

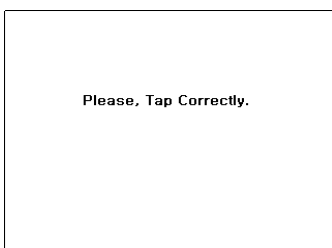


Fig 4



Fig 5



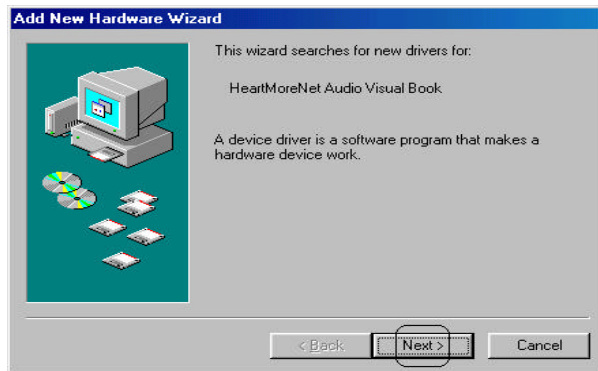
4. Session Manager Installation

1. USB Driver Installation

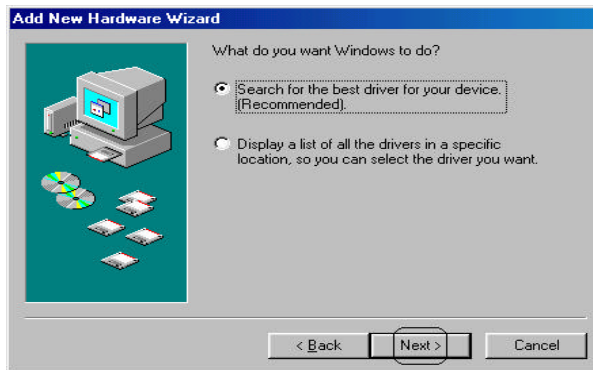
1) Windows 98

Connect a Session Player with your computer by an USB cable and then Power ON a Session Player.

Windows executes [Add New Hardware Wizard] automatically. Click [Next].



Choose "Search for the best driver for your device. (Recommended)" and Click [Next].



Insert Installation CD into a CD-ROM Drive. Choose [CD-ROM drive(C)] and then Click [Next].





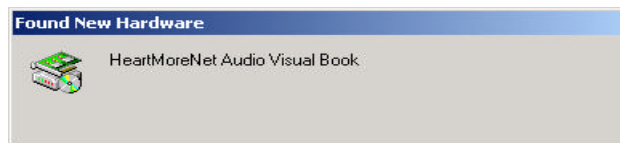
Windows copies necessary files into your computer. Click [Finish] when installation finished.



## (2) Windows 2000

Connect a Session Player with your computer by an USB cable and then Power ON a Session Player.

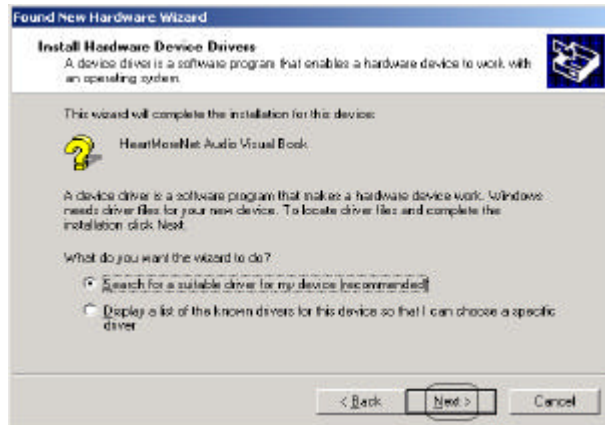
Once detected “HeartMoreNet Audio Visual Book”, Windows shows “Found New Hardware Wizard” automatically.



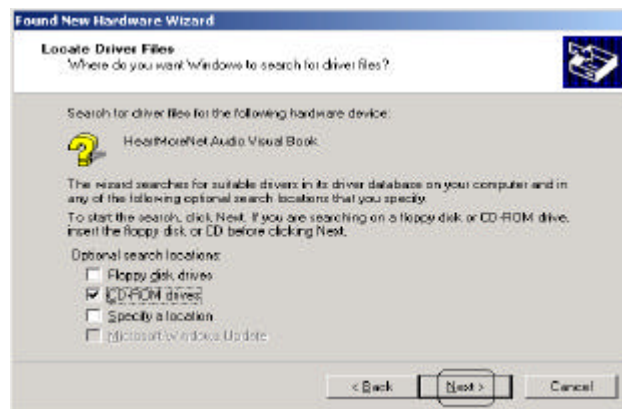
Insert Installation CD into the CD-ROM Drive and then click [Next].



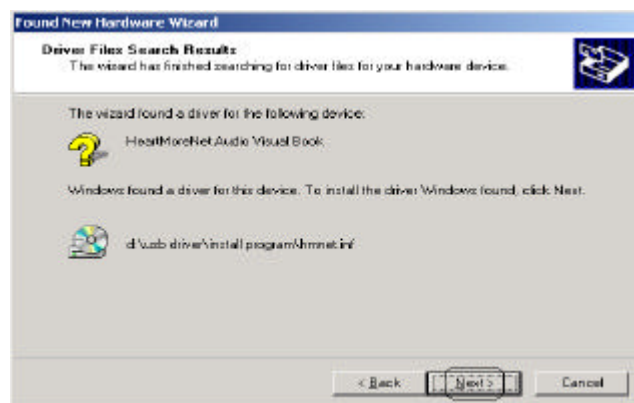
Select "Search for a suitable driver for ~[recommended]" and Click [Next].



Select "CD-ROM drivers" and Click [Next].



Windows shows a path of 'USB Driver' file and Click [Next].



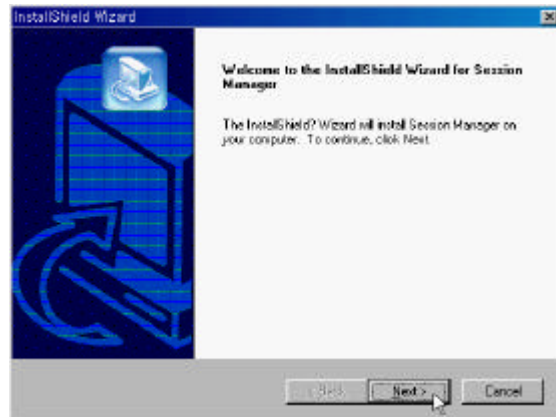
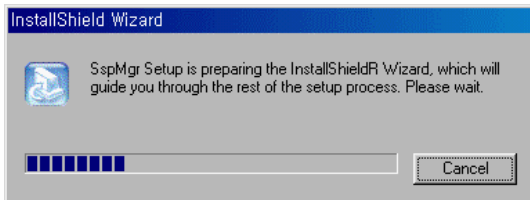
Click "Finish" and USB Driver Installation closes.



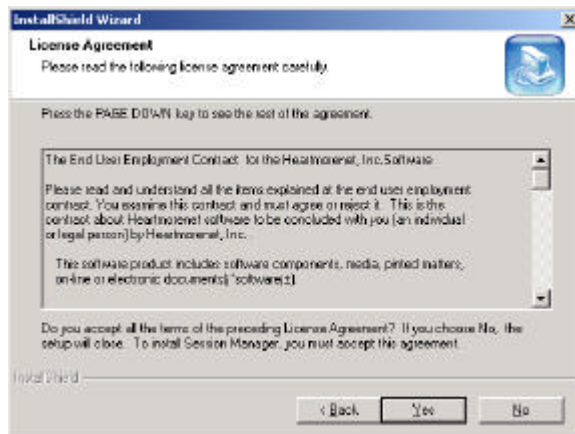
## 2. Install Session Manager Program Ver1.0

Load Session Manager Installation CD into the CD-ROM Drive.

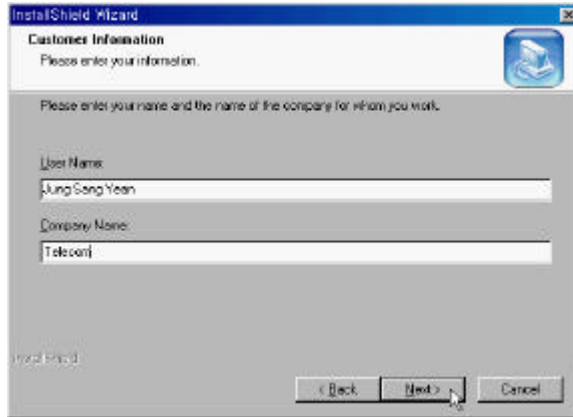
Double click "Setup.exe" in Folder of Session Manager, the Session Manager Installation program is executed and then begins to initialization of Manager installation.



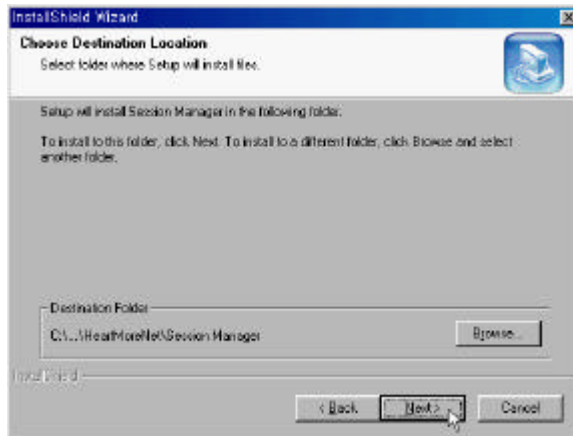
Click [Yes] on the screen for License Agreement.



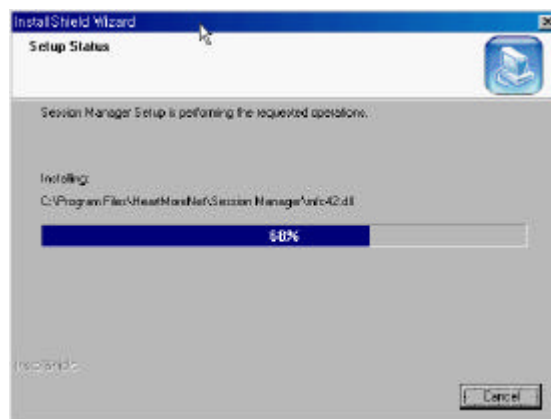
Type in User name and a Company Name.



Set a path for Session Manager.

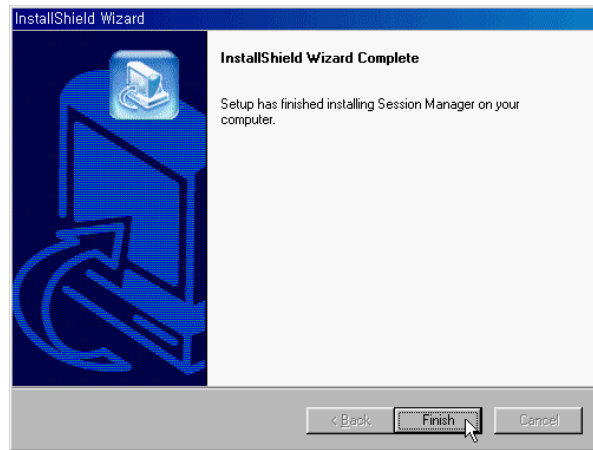


Question dialogue box asks if you want to make a short-cut icon on desktop. Click [Yes] finishes installation.



“Installation Wizard Complete” windows appears to let you know finish installation.

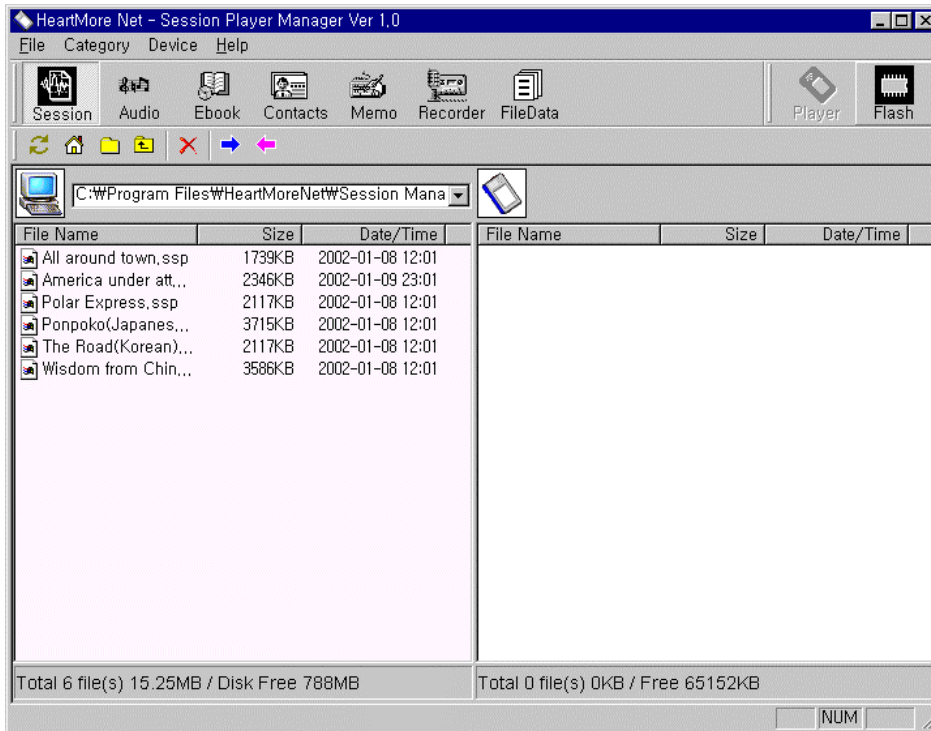
Click [Finish].



### 3. Getting start a Session Manager and Modification / Uninstallation

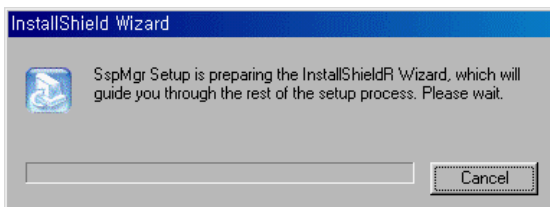
#### (1) Getting Start Session Manager

Run "Start -> Program -> Session Manager -> Session Manager" in status line or Double Click 'Session Manager Short Cut Icon' on desktop, the Session Manager Program is getting start. Then The Session Manager main screen appears.

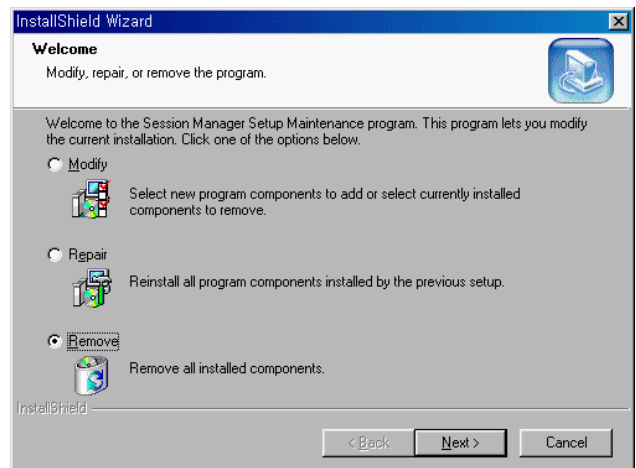


#### (2) Modification and Uninstallation the Session Manager

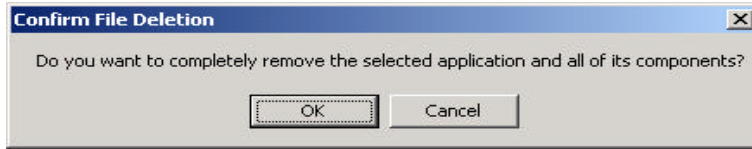
Run "Start → Program → Session Manager → Uninstall Session Manager", you can see below screens. To modify or uninstall, please follow each step.



Choose Remove among Modify, Repair, Remove

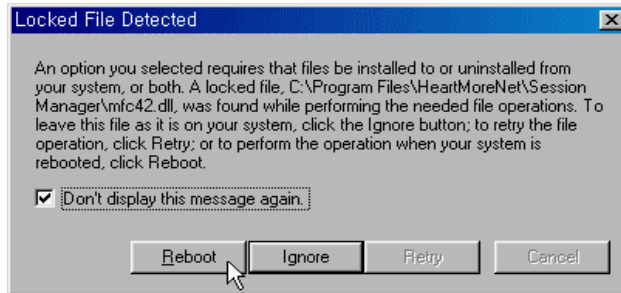


Dialogue box asks if you really remove.

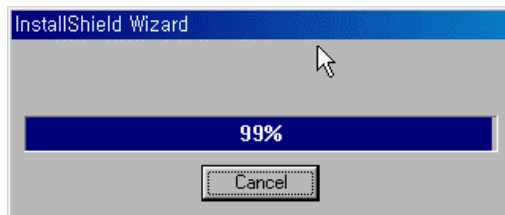


Locked File Detected box appears if some files to be removed are under executed by Windows system.

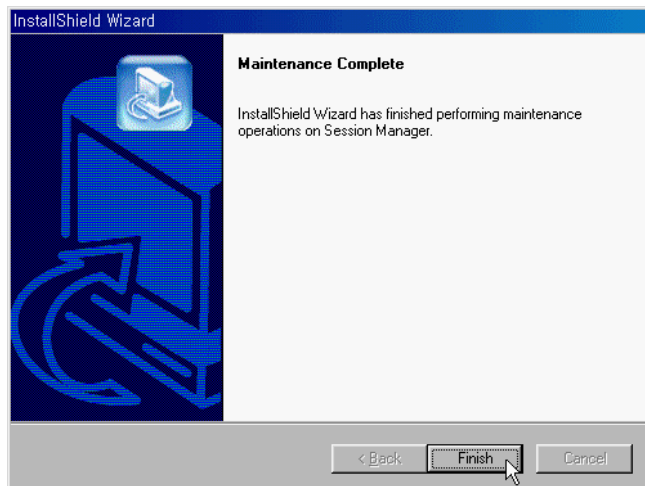
Tick  Don't display this message again and Click



All the files for Session Manager are removed.

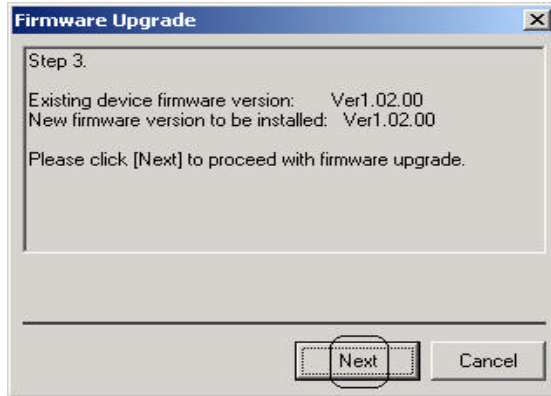


Finish Uninstallation of Session Manager.

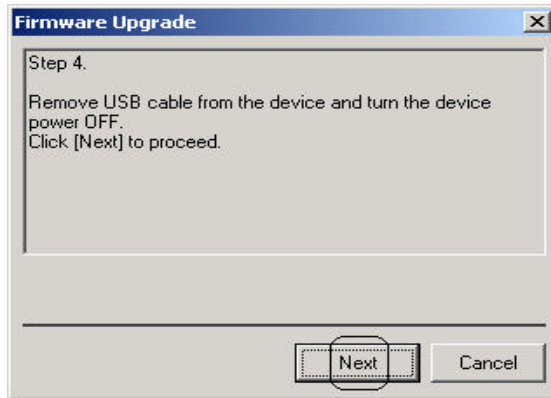




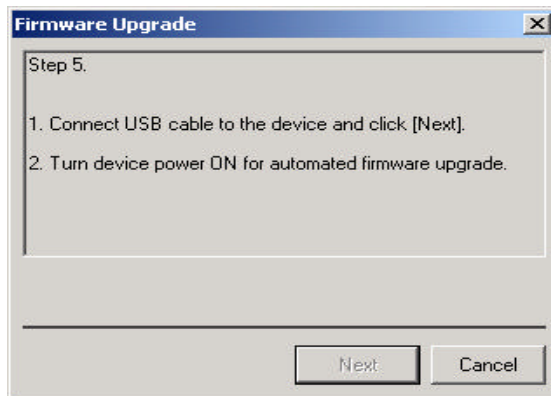
Step 3: You can see the current firmware version and version to be downloaded. Click [Next].



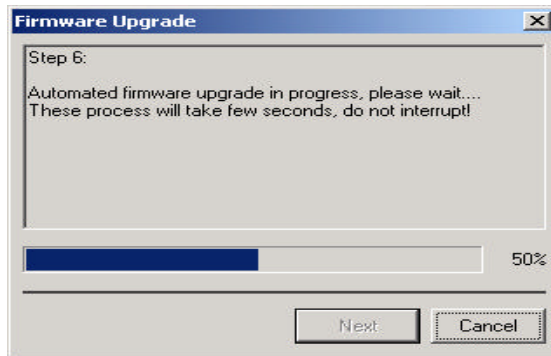
Step 4: Unplug USB cable from a Session Player if plugged. And Turn OFF power at a Session Player if it was powered ON. Then click [Next].



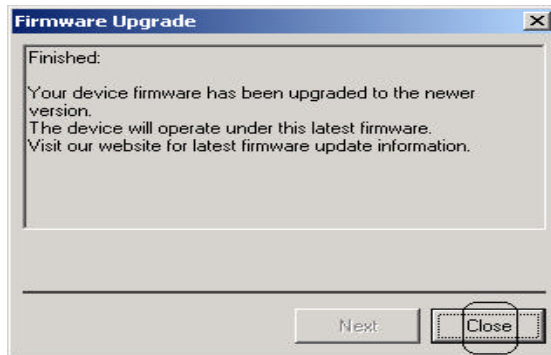
Step 5: Plug an USB cable to a Session Player again and Power ON a Session Player.



Step 6: A Session Player is turned ON, download is performed automatically.



Final Step: Click [Close] when you confirm finishing download.



Help



You can see help messages.

(2) Category Tool Bar for a Session Player



(Refer details to the section that explains function.)

(3) Session Player Tool Bar



It shows which media is used for a Session Player. You can choose another one.

(4) Tool Bar according to each category

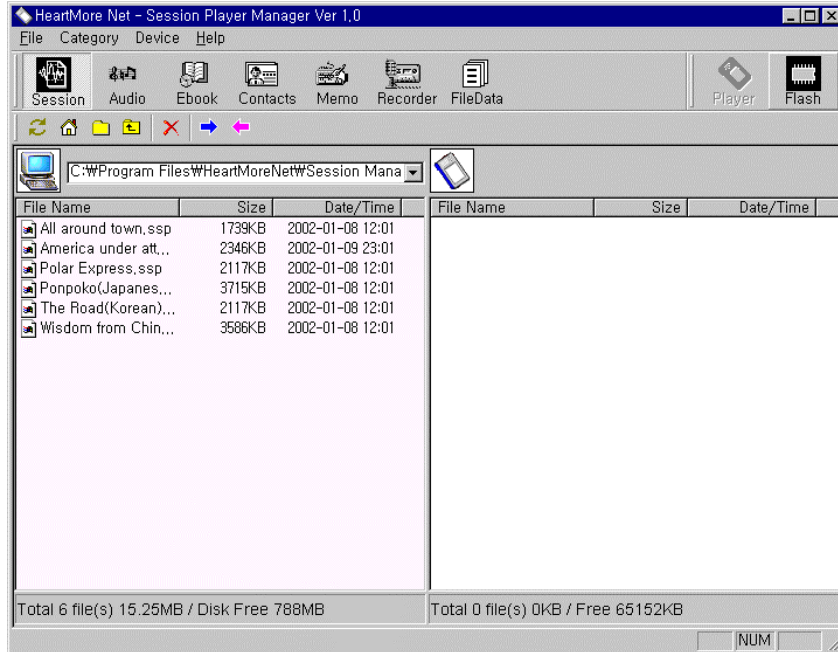


(Refer to the pertinent details)

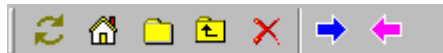
## 2. Function details according to each category.

### (1) Session

Session manages the files edited by Session Editor and the file has a extension of ssp. You can upload and download to(from) a Session Player.



### The functions of Tool Bar



Refresh – It shows the list of Session files in a PC or a Session Player.



Home – To move to the Session Home directory.



Select Directory – To move to the other directory in a PC.



Up Directory – To move directory upward.



Delete – You can delete files from a PC or a Session Player.



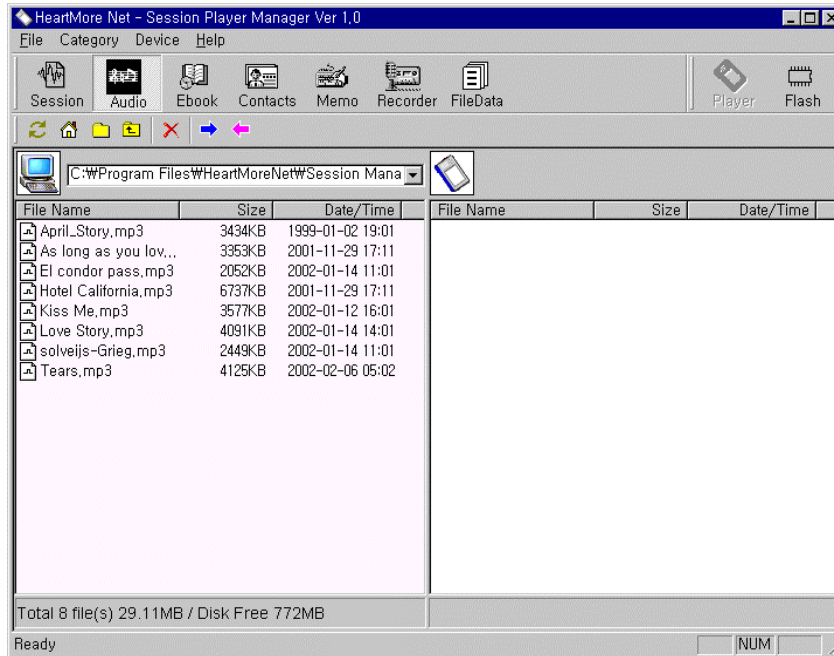
Download – This is to download files from a PC to a Session Player.



Upload – This is to upload files from a Session Player to a PC.

(2) Audio

This is to manage the Audio files (\*.mp3). You can choose files to upload or to download from (to) a Session Player.



. The functions of Tool Bar



Refresh - It shows the list of Audio files in a PC or a Session Player.

Home - To move to the Audio Home directory.

Select Directory – To move to the other directory in a PC.

Up Directory - To move directory upward.

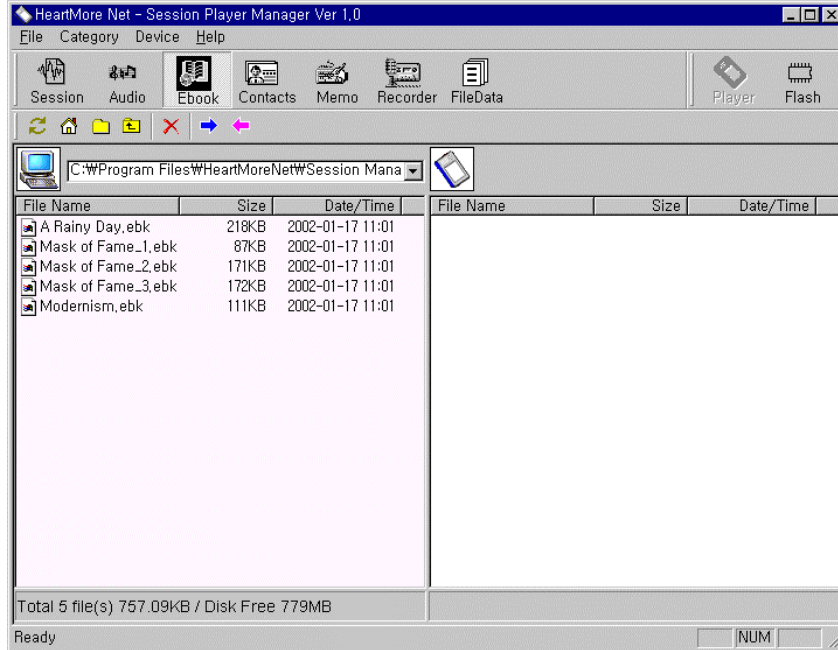
Delete - You can delete files from a PC or a Session Player.

Download - This is to download MP3 files from a PC to a Session Player.

Upload - This is to upload MP3 files from a Session Player to a PC.

(3) Ebook

You can manage Ebook files (\*.ebk) edited by Session Editor and upload/download those files to (from) a Session Player is available.



The functions of Tool Bar



Refresh - It shows the list of Ebook files in a PC or a Session Player.

Home - To move to the Ebook Home directory.

Select Directory – To move to the other directory in a PC.

Up Directory - To move directory upward.

Delete - You can delete files from a PC or a Session Player.

Download - This is to download Ebook files from a PC to a Session Player.

Upload - This is to upload Ebook files from a Session Player to a PC.

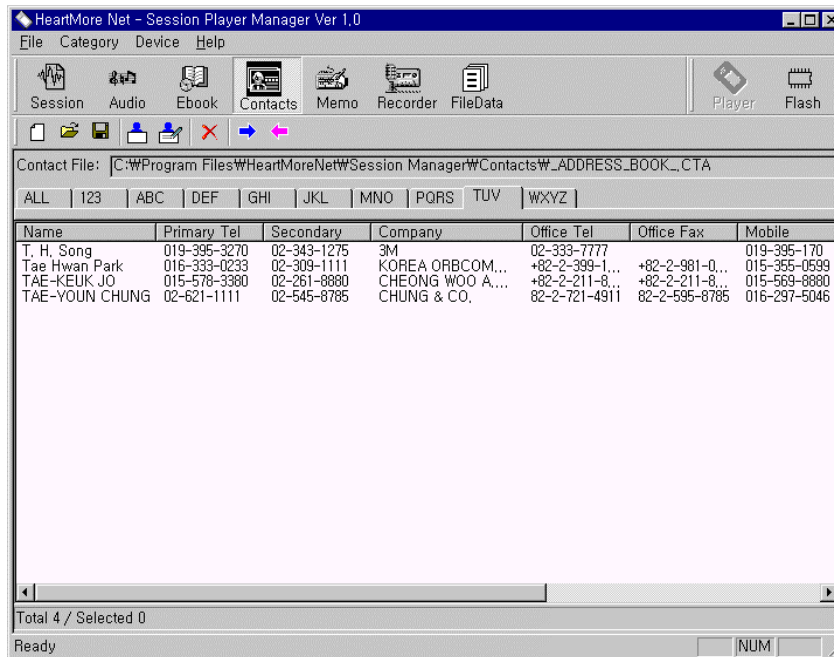
(4) Contacts

You can write and modify address book files (\*.cta). Upload and download files to (from) a Session Player is available.

\* **CAUTION** : ONLY ONE ADDRESS BOOK IS AVAILABLE TO A SESSION PLAYER.


\* **CAUTION** : NEW ADDRESS FILE OVERWRITES EXISTING ADDRESS FILE. IF YOU WILLING TO RESERVE OLD ADDRESS FILE, RENAME IT AND UPLOAD IT TO A PC. AND THEN DOWNLOAD NEW ADDRESS FILE TO A SESSION PLAYER.

\* **CAUTION** : WHEN YOU ARE TRYING TO UPLOAD ADDRESS FILE IN A SESSION PLAYER, UPLOAD ADDRESS FILE IN A SESSION PLAYER OVERWRITES IT IN A PC. TO AVOID LOSING ADDRESS DATA IN A PC, FIRST OF ALL, RENAME \_ADDRESS\_BOOK\_CTA FILE IN A PC AND UPLOAD ADDRESS FILE IN A SESSION PLAYER TO A PC.




The functions of Tool Bar.



 New – Creating a new address file.

 Open – Open an address file

 Save – To save address file.



Delete – To remove selected contents from an address file.



Download – To download address file to a Session Player.

**\* BEFORE DOWNLOAD !!!**

To save address file in a Session player by upload it to a PC...

- 1) Start Session Manager Program and connect a Session Player by an USB cable. And then Turn ON a Session Player.
- 2) Choose Contacts at the Category Tool Bar and click Upload icon.
- 3) The `_ADDRESS_BOOK_CTA` file in a home directory for an address book contains address data from a Session Player.
- 4) Rename `_ADDRESS_BOOK_CTA` file.



Upload – To upload address file in a Session player to a PC.

**\* BEFORE UPLOAD!!!**

To save `_ADDRESS_BOOK_CTA` file at the Contacts home directory into another file...

- 1) Move to the Home directory using “Window Explorer” utility.
- 2) Select `_ADDRESS_BOOK_CTA` file and then press right button of a mouse and select ‘Rename’.
- 3) Specify new file name.



New – To add new item to a address book.



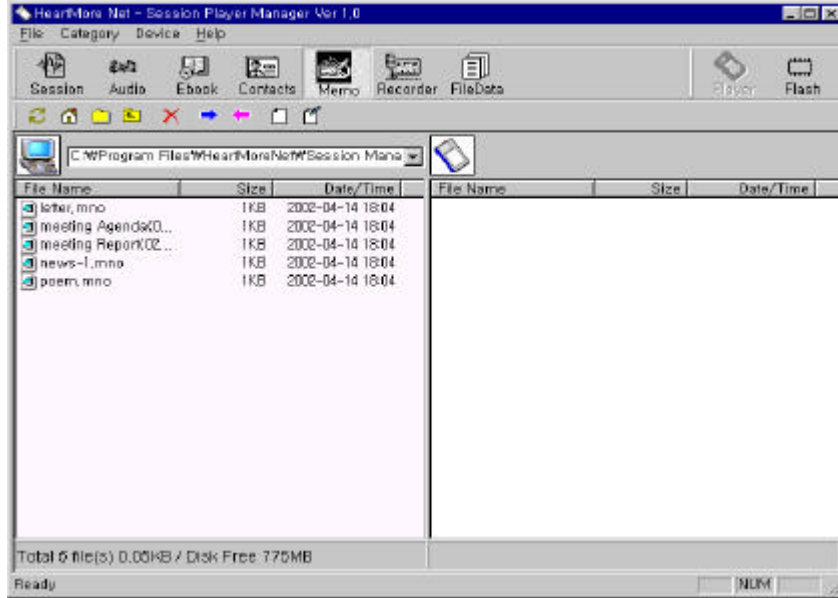
Edit – To edit or modify selected item.



(5) Memo










This category is to manage memo files(\*.mno). You can download or upload to(from) a Session Player

\* **CAUTION:** 64,000Bytes or more sized file cannot be downloaded to a Session Player.



The Functions of Tool Bar

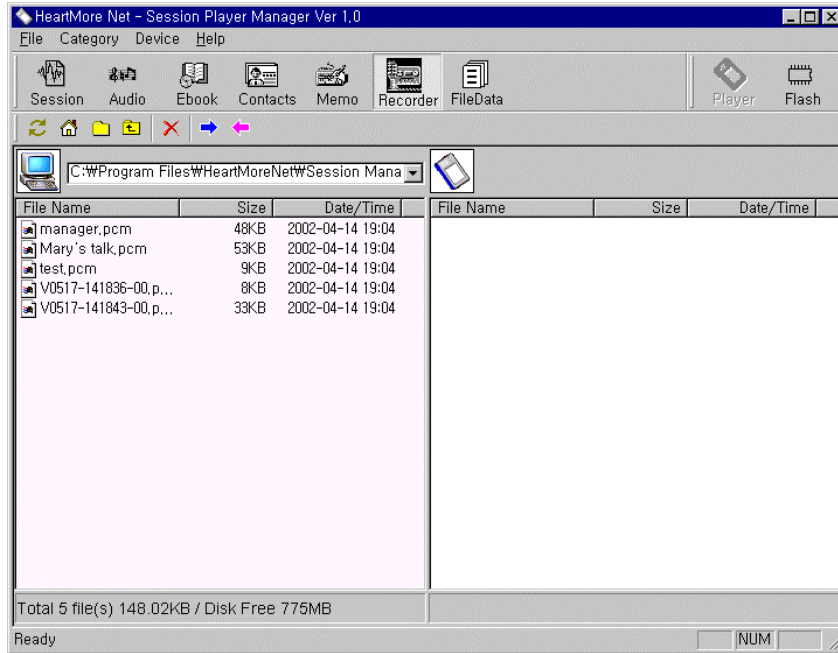


-  Refresh - It shows the list of Memo files in a PC or a Session Player.
-  Home - To move to the Memo Home directory.
-  Select Directory – To move to the other directory in a PC.
-  Up Directory - To move directory upward.
-  Delete - You can delete files from a PC or a Session Player.
-  Download - This is to download Memo files from a PC to a Session Player.
-  Upload - This is to upload Memo files from a Session Player to a PC.
-  New – Create a new memo file.
-  Edit – Modify or edit selected memo file.

## Recorder

This is to download or upload recorded files by a Session Player to(from) a PC.

- \* **CAUTION:** A Session Player plays back only audio files recorded by a Session Player.
- \* **CAUTION:** Windows application program does not play back audio files recorded by a Session Player.



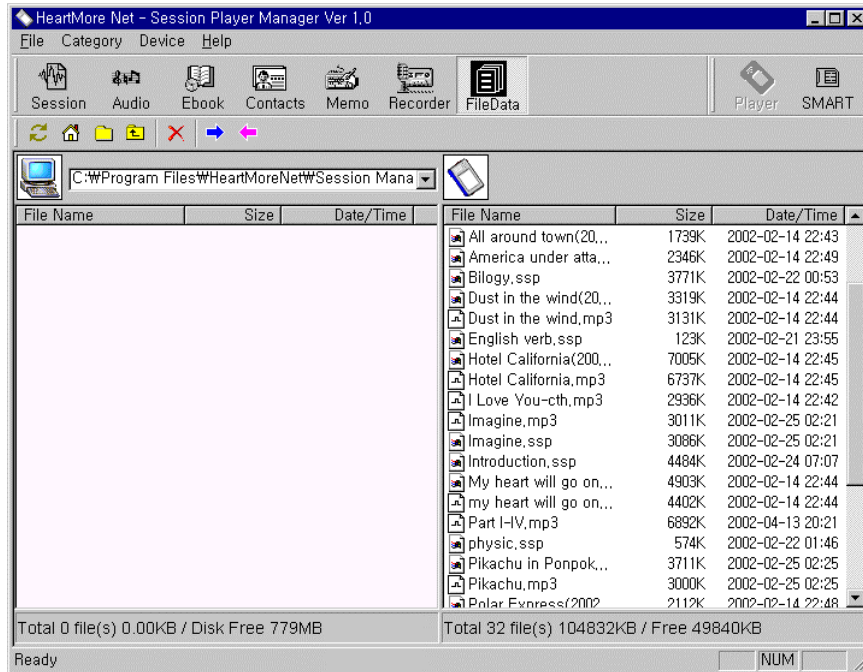
## The functions of Tool Bar



- Refresh - It shows the list of Recorder files in a PC or a Session Player.
- Home - To move to the Recorder Home directory.
- Select Directory – To move to the other directory in a PC.
- Up Directory - To move directory upward.
- Delete - You can delete files from a PC or a Session Player.
- Download - This is to download Recorder files from a PC to a Session Player.
- Upload - This is to upload Recorder files from a Session Player to a PC.








(6) FileData

This is to show the list of files in a Session Player. You can manage files easily.



The Functions of Tool Bar



-  Refresh - It shows the list of all files in a PC or a Session Player.
-  Home - To move to the FileData Home directory.
-  Select Directory – To move to the other directory in a PC.
-  Up Directory - To move directory upward.
-  Delete - You can delete files from a PC or a Session Player.
-  Download - This is to download FileData files from a PC to a Session Player.
-  Upload - This is to upload FileData files from a Session Player to a PC.

6. Screen Structure and Indicators

1. Zone



(1) Folder : This is to classify main titles according to the contents. Above screen shot shows four kinds of folder. SESSION, AUDIO, E-BOOK, SYSTEM

SESSION Folder : This folder contains the files combined with AUDIO, Text, Image and animation.

AUDIO Folder : This folder contains the files for sound. You can play back MP3 files through this folder.

E-BOOK Folder : This folder contains the files combined with text and images.

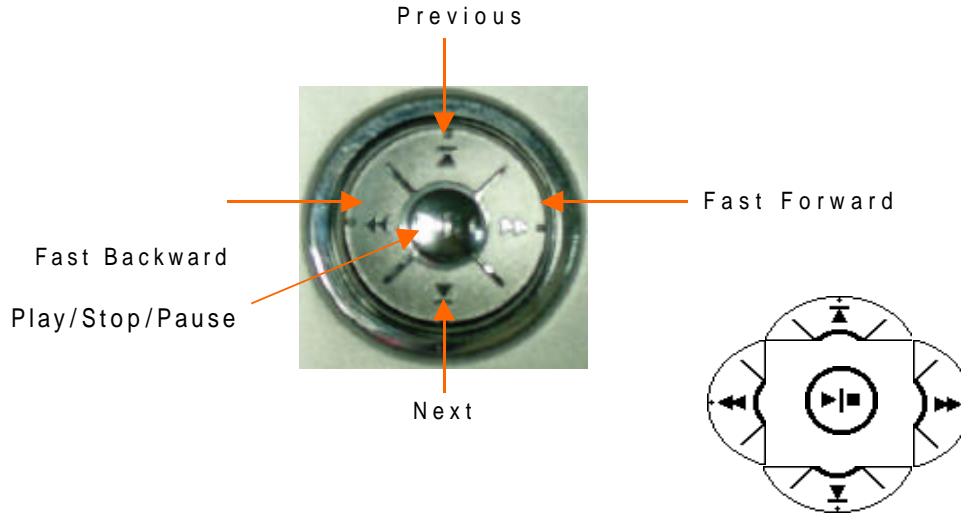
SYSTEM Folder : This folder contains the files for a PDA contents. Setting up a Session Player and Recording function is performed through this folder.

(2) Icon Area : This area is to show icons according to an each folder

(3) Status Indicator : It shows current time, the locking status, how much battery is remained, the volume level and the scroll Up/Down

2. The name of Key Button (Jog Shuttle) and its operation

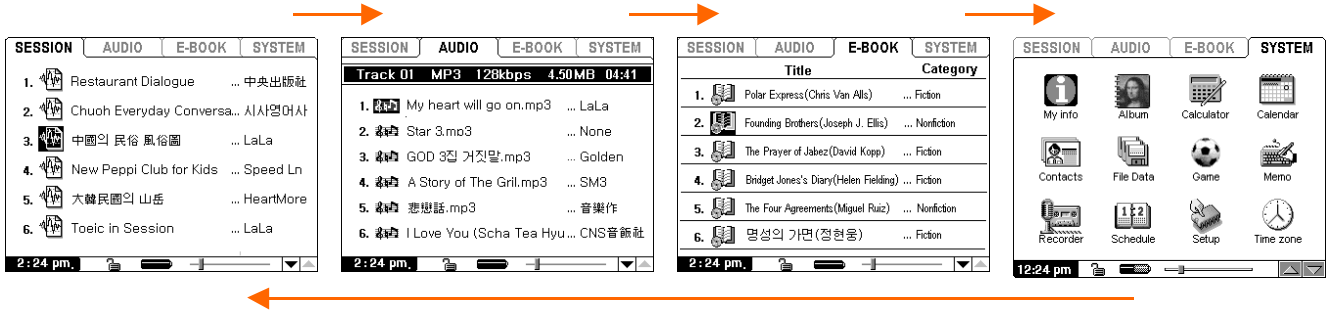
(1) Multi-Function Jog Shuttle



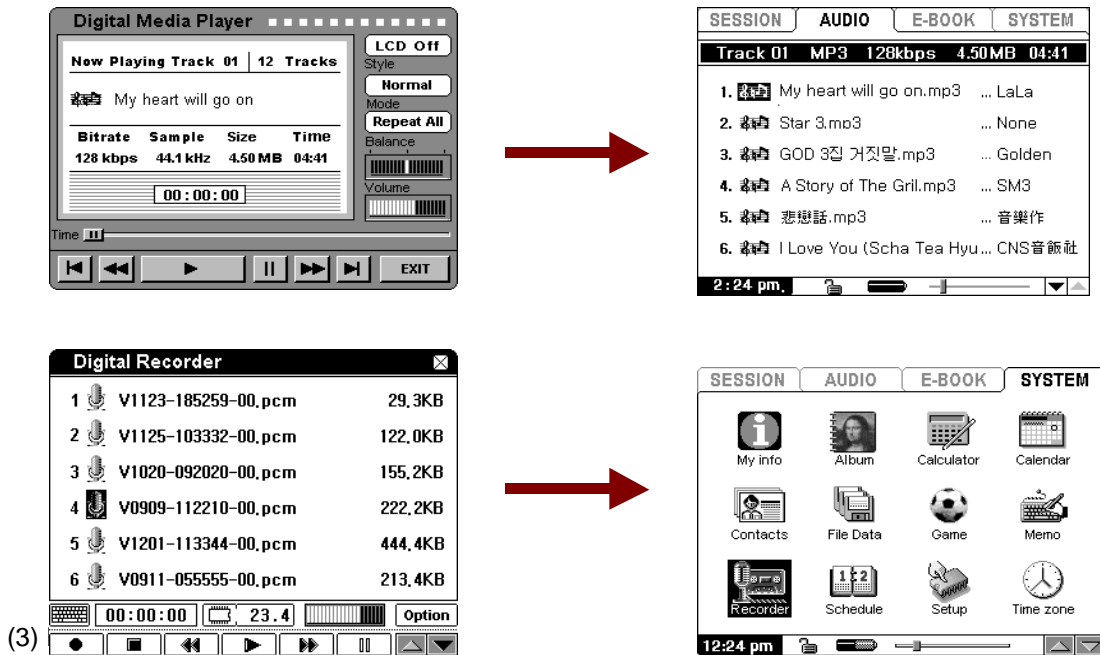
(2) For the Volume/Scroll function

Button	Function
	<p><b>&lt; Long time pressing &gt;</b>            Press two or more seconds this button, then it enters to a volume control mode.</p>
	<p><b>&lt; Short time pressing &gt;</b>            Short time pressing in a volume mode lets turn to a scroll control mode.</p>
	<p><b>&lt; Sliding &gt;</b></p> <ol style="list-style-type: none"> <li>1. Sliding this knob in a volume control mode changes the volume.</li> <li>2. Sliding this knob in a scroll control mode changes icon sequentially.</li> <li>3. Sliding this knob in Audio Play mode changes the volume.</li> </ol>

Changeover a Folder : Short (less than one second) touch this key changes folder sequentially.



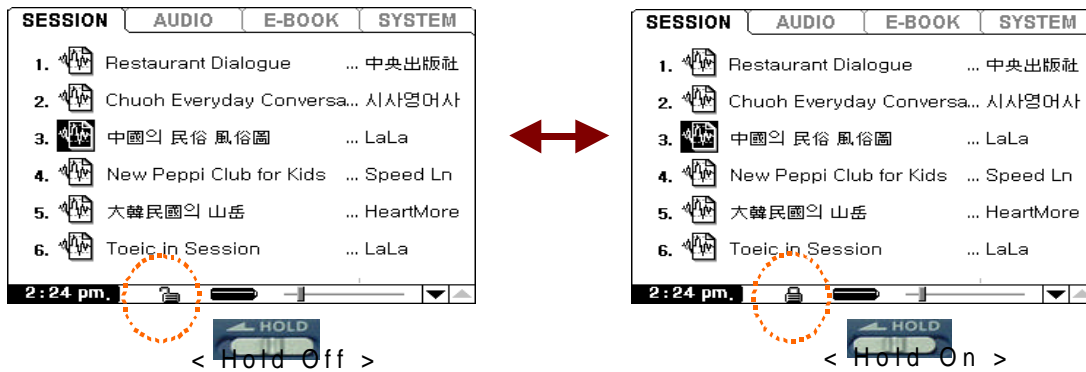
Out from the execution screen : Executing contents except Session, E-Book, Album, If you press this key two or more seconds, it comes out from the execution screen.



Moving Hold key to the left position lets all the keys into a locking status and no key operates any more.

The locking status indicator changes the shape from Unlock to Lock.

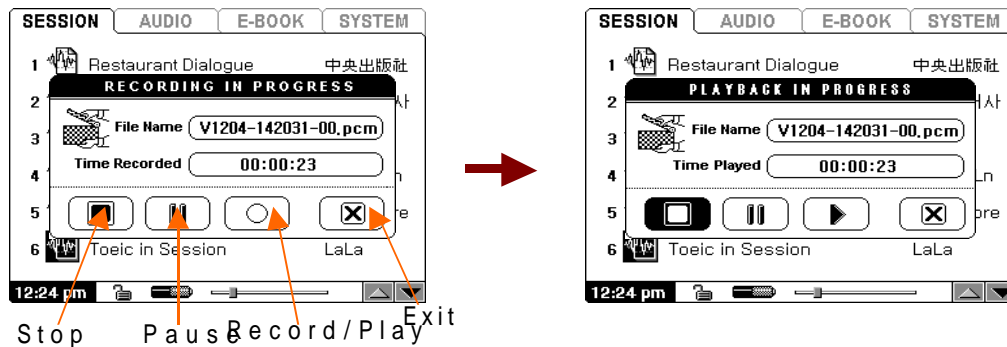
This key is very useful to be free from the external intervention. Especially it is good when you are moving.



**<CAUTION>** When no keys operates and touching screen does not work. Please Check the status of Hold Key.

(4) REC Button : Direct Record

In spite of Recorder icon in a SYSTEM folder, you can record sound by using this key. Pressing this Button stops the function in progress if a Session Player was under the other operation mode except Recorder mode. The screen is changed as below and begins to record.

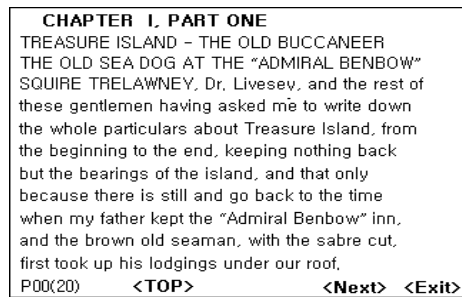
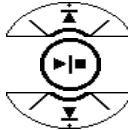
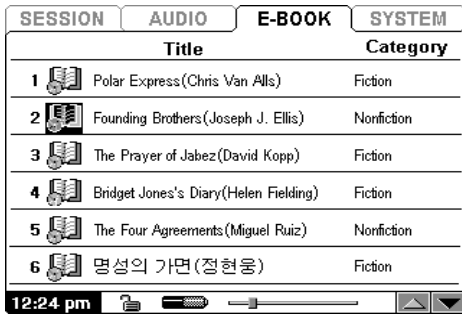
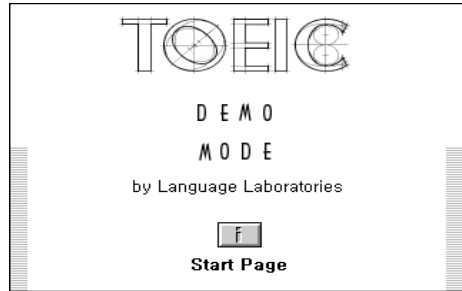


Once a screen changed as above, you may touch icons that you want to do. Pressing "Stop" Icon while recording lets a Session Player play back recorded sound. Pressing "Pause" key pauses recording. You may press Record/Play key to resume recording. You can hear recorded sound by touching "Play" Icon. Touching "X" lets a Session Player exit from the recorder mode.



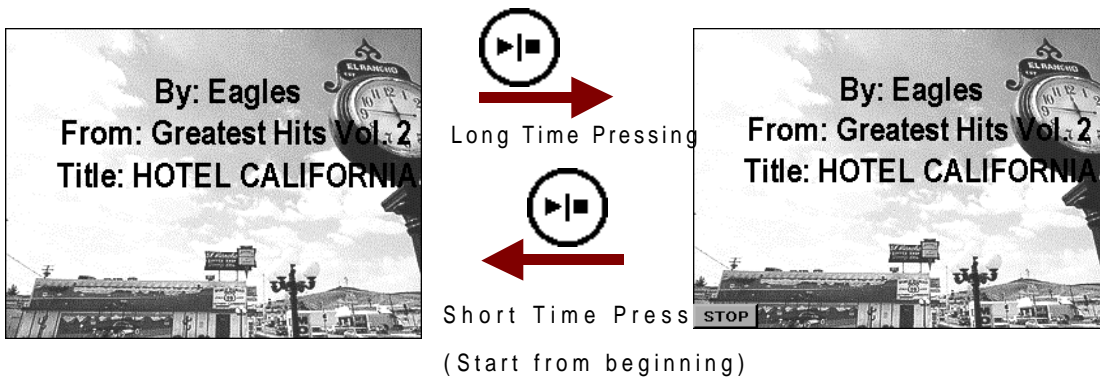
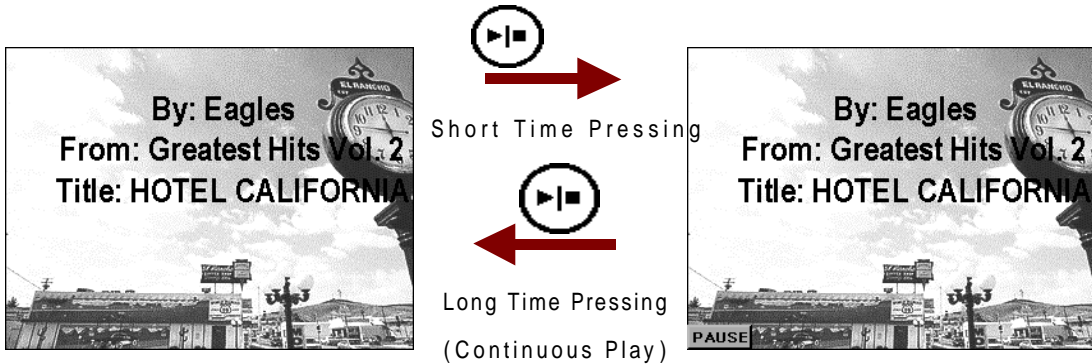
7. SESSION & E-BOOK

1. The functions of each key.



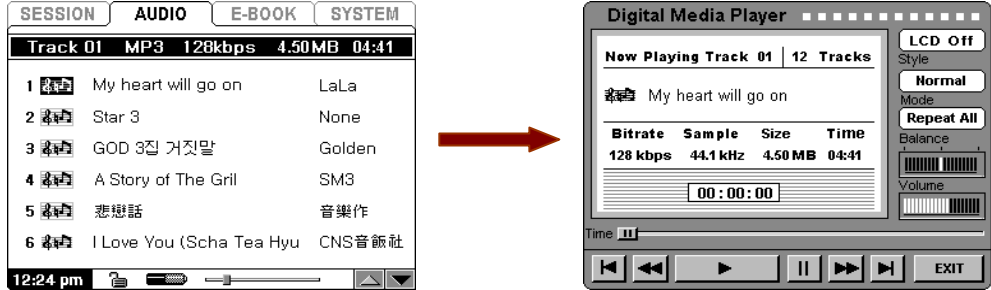
Button	Function
	<b>&lt;Play/Stop Key&gt;</b> Pressing this key plays or stops the Session, eBook, Album function
	<b>&lt; Next Key &gt;</b> Pressing this key while playing lets a Session Player plays next session, e-Book contents.
	<b>&lt; Previous Key &gt;</b> Pressing this key while playing lets a Session Player plays previous session, e-Book contents.
	<b>&lt; Volume/Scroll Key &gt;</b> Sliding this knob on the Session screen or e-Book screen lets move icon sequentially.

2. Pause / Stop



8. AUDIO

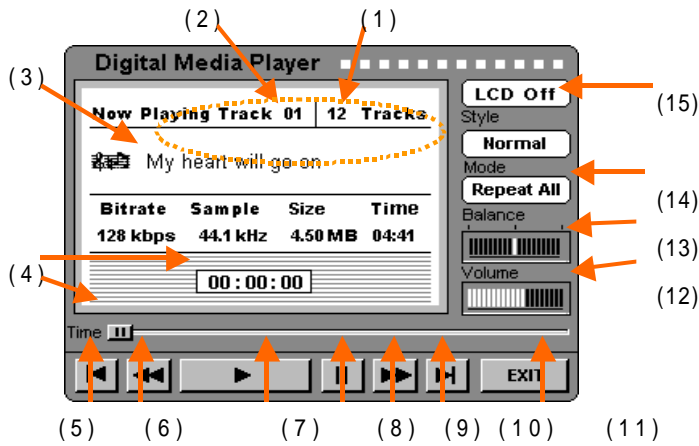
1. The functions of each key



Button	Function
	<b>&lt;Play/Stop Key&gt;</b> 1. Pressing this key lets play selected Audio Content. The screen is changed as a right figure in above. 2. While playing, pressing this key for a short time (less than 1 second) lets stop playing and pressing for a long time (two or more seconds) lets pause playing. 3. While Stop/Pause condition, pressing this key turns to a playing mode.
	<b>&lt; Previous Key &gt;</b> This key is to play previous music.
	<b>&lt; Next Key &gt;</b> This key is to play next music.
	<b>&lt; Fast Backward Key &gt;</b> This key is used for Fast Rewind while playing.
	<b>&lt; Fast Forward &gt;</b> This key is used for Fast Forward while playing.
	<b>&lt;Volume/Scroll Key -Long time pressing &gt;</b> Pressing this key for two more seconds lets exit from a player mode.
	<b>&lt;Volume/Scroll Key-Sliding&gt;</b> Sliding this key controls the volume.

2. Digital Media Player

(1) Basic Screen



- |                      |                     |
|----------------------|---------------------|
| 1. Total Track       | 8. Pause            |
| 2. Current Track     | 9. Fast Forwarding  |
| 3. Music information | 10. Next Music      |
| 4. Progressing Time  | 11. Exit            |
| 5. Previous Music    | 12. Audio Volume    |
| 6. Fast Rewind       | 13. Audio Balance   |
| 7. Play/Stop         | 14. Audio Play Mode |
|                      | 15. LCD On/Off      |

(2) The Function Details

LCD Off is used for power saving mode. It is useful when you are enjoying entire music by repeat. Touching a LCD is enough for recovering to LCD On.

Another useful case is to use while moving by setting Hold On.

**<CAUTION : In this condition, no key is working. So. First of all release Hold condition and Turn On the LCD by touching LCD. >**

Audio Play Mode is to specify playing mode. There are 4 kinds of playing mode. Those are Normal, Repeat, Repeat All, Random.

-Normal : This is to play all the tracks sequentially to the final track.

For example, 9<sup>th</sup> track is plying at the moment, the order to play should be 9 -> 10 -> 11-> 12 -> Stop

-Repeat : This is to play current track repeatedly. This is useful when you want to listen to the same music continuously.

-Repeat All : This is to play all the tracks repeatedly by sequential. This mode is used when you want to listen to all the tracks repeatedly by sequential.

-Random : There is no special order to play. A track is selected randomly and be played.

## 2. Major Specification

CPU	: CIRRUS LOGIC EP 7212(ARM7TDMI CPU)
Memory	: 64MB Flash Memory (Expandable) SMC Slot to expand memory (8,16,64,128MB-option)
Display	: 320 x 240 Pixel (3.9 inch, 0.24 Dot pitch), EL Backlight, BW
Touch Screen	: 4 wire Analog Resistive Touch Screen
Record type/Time	: ADPCM/8 hours approx. (Basis on 128MB) Built-in Microphone, Line In recording
Play Time	:20 or more hours(Session Play Time) 25 or more hours(LCD Off Audio Play Time)
Earphone	: Stereo Ear Phone set
Interface	: USB 1.1(bandwidth over 6.5Mbps)
Language	: English, Korean, Japanese, Chinese
Size/Weight	:138 x 86 x 16 mm / 145g(193g-Including Batteries)
Battery/ Power	:2 x AA-size / 3Volt DC In Adapter

11. Warranty Card
-------------------

### Warranty Card

Product	SESSIONPLAYER	Model	
Date of Purchase	(DD/MM/YYYY)	Serial No.	
Period of Warranty	12 Month since purchased	Shop	

This product manufactured by a close inspection for quality control.

We guarantee 12 months of warranty for the defect product. But any problems that occur as a result of any of the user's fault will not be covered by our warranty.

Claim	Compensation	
In a month since purchased, same critical defect was repeated in spite of no special condition.	Replace with New	
Defects occurred in ordinary usages	Within Warranty	After Warranty
	Free Repair or Replace with New	Charged repair or Charged replace with New
Any problems that occur as a result of any of User's fault.	Charge to the amount of cost to fix it up. Or Replace with New by charging the amount of cost to fix it up.	Follows manufacturer's criterion.



---

# MEMO

## **Labeling & Users manual Information**

### **( FCC Part 15.19)**

This device complies with Part 15 of the FCC Rules. Operation is subject to the following two conditions; (1) This device may not cause harmful interference, and (2) this device must accept any interference that may cause undesired operation

### **( FCC Part 15.105)**

Note: This equipment has been tested and found to comply with the limit for a Class B digital device, pursuant to part 15 of the FCC Rules.

These limits are designed to provide reasonable protection against harmful interference in a residential

Installation. This equipment generates, uses, and can radiate radio frequency energy and, if not installed and used in accordance with the instructions. If this equipment does cause harmful interference to radio communications. However, there is no guarantee that interference will not occur in a particular installation. IF this equipment does cause harmful interference to radio or television reception, which can be determined by turning the equipment off and on, the user is encourage to try to correct the interference by one or the following measures:

- Reorient or relocate the receiving antenna.
- Increase the separation between the equipment and receiver.
- Connect the equipment into an outlet on a circuit different from that to which the receiver is connected
- Consult the dealer or an experience radio TV technician for help

### **( FCC Part 15.21)**

Change or modification not expressly approved by the party responsible for Compliance could void the user' s authority to operate the equipment