

Appendix F – USER’S Manual



CDU-550 Modem User Guide

FCC RF EXPOSURE COMPLIANCE

In August 1996 the Federal Communications Commission (FCC) of the United States with its action in Report and Order FCC 96-326 adopted an updated safety standard for human exposure to radio frequency (RF) electromagnetic energy emitted by FCC regulated transmitters. Those guidelines are consistent with the safety standard previously set by both U.S. and international standards bodies. The design of this modem complies with the FCC guidelines and these international standards.

Use only the supplied or an approved antenna. Unauthorized antennas, modifications, or attachments could impair call quality, damage the modem, or result in violation of FCC regulations.

This CDMA 1xEVDO USB data modem has been tested for FCC RF exposure hand and body SAR compliance with the CDU-550 USB dongle modem form factor. In order to comply with FCC RF exposure requirements, the CDMA 1xEVDO USB data modem must be operated with the CDU-550 USB dongle modem form factor. The use of this device in any other type of host configuration may not comply with FCC RF exposure requirements and should be avoided. During operation, a 1.5cm separation distance should be maintained between the antenna, whether extended or retracted, and the user's/bystander's body (excluding hands, wrists, feet, and ankles) to ensure FCC RF exposure compliance.

CAUTION

Change or modification to the modem without the express consent of Data Poz Co., Ltd. voids the user's authority to use the equipment. This equipment has been tested and found to comply with the limits pursuant to Part 22 of the FCC rules. These limits are designed to provide reasonable protection against harmful interference in an appropriate installation. This equipment generates, uses, and can radiate radio frequency energy and, if not used in accordance with instructions, can cause harmful radiation to radio communication. However, there is no guarantee that interference will not occur in a particular installation. If the equipment does cause harmful interference in radio and television reception, which can be determined by turning the equipment on and off, the user is encouraged to try to correct the interference by one or more of the following measures:

- Reorient or relocate the receiving antenna
- Increase the separation distance between the equipment and the receiver
- Connect the equipment into an outlet on a circuit different from that to which the receiver is connected.
- Consult the dealer or an experienced Radio / TV technician for help.

This equipment has been tested and found to comply with the limits for a class B digital device, pursuant to Part 15 of the FCC rules. These limits are designed to provide reasonable protection against harmful interference in a residential installation. This equipment generates, uses, and can radiate radio frequency energy and, if not installed and used in accordance with the instructions, may cause harmful interference to radio communication. However, there is no guarantee that interference will not occur in a particular installation. If this equipment does cause harmful unacceptable interference to radio and television reception, which can be determined by turning the equipment on and off, the user is encouraged to try to correct the interference by one or more of the following measures:

- Reorient or relocate the receiving antenna
- Increase the separation distance between the equipment and the receiver
- Connect the equipment into an outlet on a circuit different from that to which the receiver is connected.
- Consult the dealer or an experienced Radio/TV technician for help.

Cautions for Users

-Use of CDU-500 EV-DO Modem (hereinafter referred as modem), while running a notebook PC with a battery, may cause earlier exhaustion of the battery than usual due to additional consumption of electric currents.

-Be cautious when you touch a modem with a bare hand after long use, it may cause a burn due to its high temperature. Pick it out with the antenna after separation.

-Do not allow children or pets to approach or touch the modem when separated from a notebook PC or PDA.

-Do not give impact to the modem or throw it away.

-Use the leather case provided along with the modem when you carry the modem.

-When the modem is lost or stolen, immediately report it to the corresponding telecommunication operator.

-Do not recklessly lend your own modem to anybody else.

-Call to a service center designated by CMOTech for after-sales service.

-Do not attach an additional device which may cause alteration in performance of the product registered for the type approval.

-This modem sends and receives the radiofrequency (RF) energy in status of power-on. The radiofrequency (RF) energy may affect a human body.

-Use an antenna only approved by CMOTech. Otherwise it may cause a damage on the modem and you will not get a free after-sales service.

-Use the modem in the manner you use a notebook PC in general.

-Make the antenna stand and do not touch it when being used. If the antenna is touched, the quality of transmission and reception may be lowered and it will cause excessive power consumption.

-Be cautious as the radiofrequency (RF) energy may affect the electronic devices installed in a car.

-Be noticed that most of electronic devices are designed to be free from the RF energy but there are some products that may be out of order due to the RF energy.

-Medical Devices Industry Association recommends the patients using a pacemaker not to use RF using devices such as cell phones, wireless modems and so on because using those devices in the range of 15cm from the pacemaker may affect the pacemaker. In an inevitable situation, make it sure to keep the distance of more than 15cm between the modem and the pacemaker. To minimize the possible interference, use the modem on the opposite side of the pacemaker. Do not use it if possible.

-If you use a medical device, ask the manufacturer if the device is free from the RF energy. Some hospitals use RF medical devices. Separate the modem from a notebook PC or a PDA when entering a hospital.

-The modem may affect the functions of a hearing-aid.

-The places banning use of cell phones may require prohibit use of modems.

-Separate the modem from a notebook PC or PDA when you get on an airplane.

-Separate the modem from a notebook PC or PDA to avoid interference with explosive operations at a blasting area or a place posted "No Cell Phones". Turn off a walkie-talkie. And follow all the instructions shown in the area.

-Hold yourself in installing or using the modem at the places such as danger areas of gas leakage, chemical storage facilities, decks of a vessel and so on. Sparks may occur when you install the modem onto a notebook PC or a PDA on rare occasions.

CDU-550 Modem Install

Setup

Insert installation CD (supplied with CMOTech Data Modem) into the CD-ROM drive.

This will automatically start the installation and install the required drivers plus CMOTech Data Modem Application software.

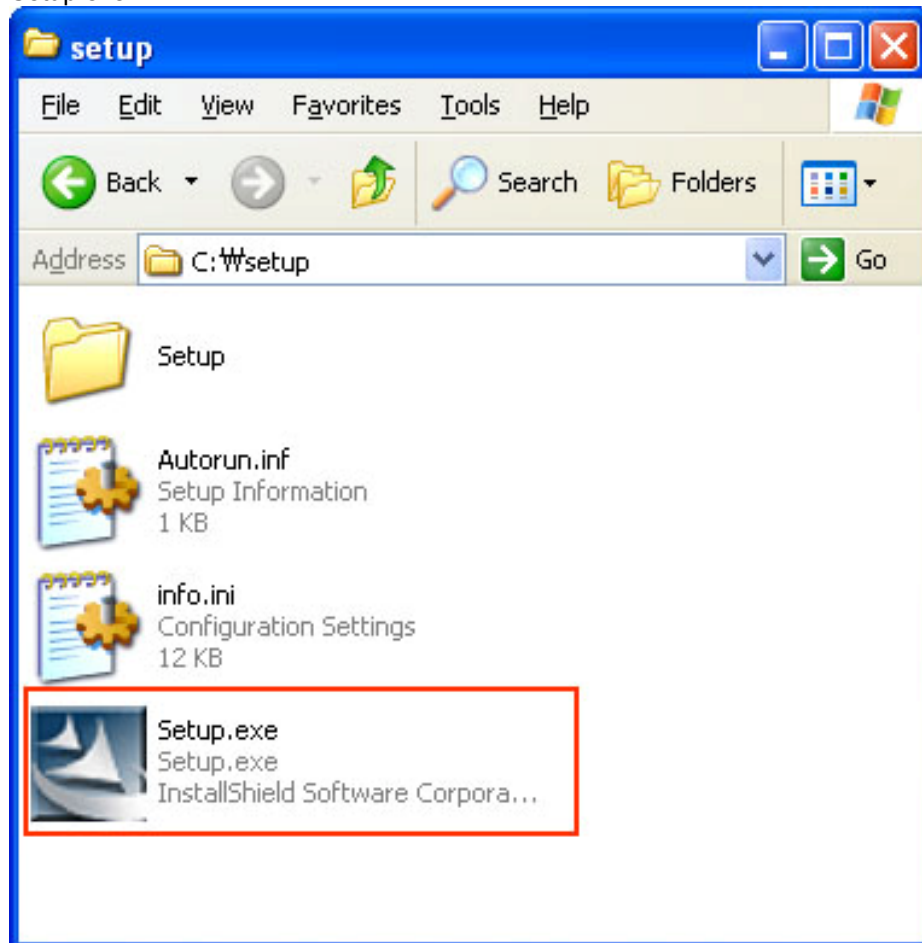
Do not connect CMOTech Data Modem into your laptop/PC yet.

The installation procedures are the Windows 2000 and Windows XP.

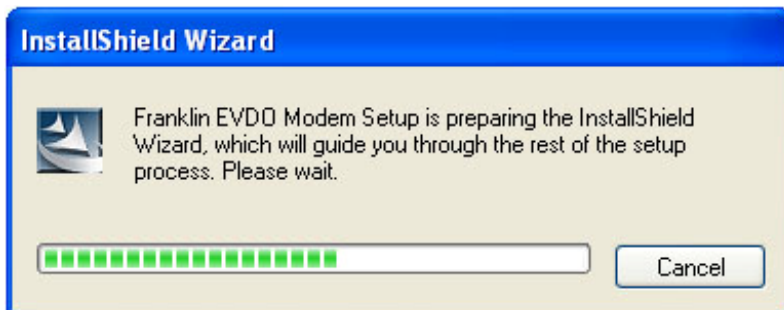
Start setup

If the auto run does not start after inserting the CD, please double-click on `Setup.exe` file on CD-ROM to start the installation.

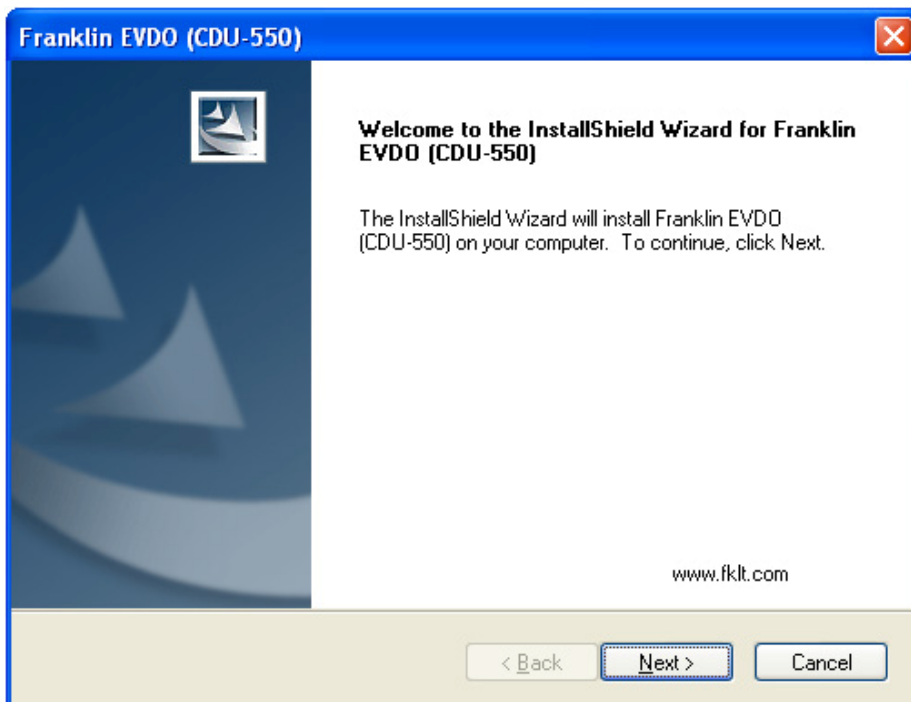
If you have already inserted your Modem into your PC, remove the Modem and double-click `Setup.exe`



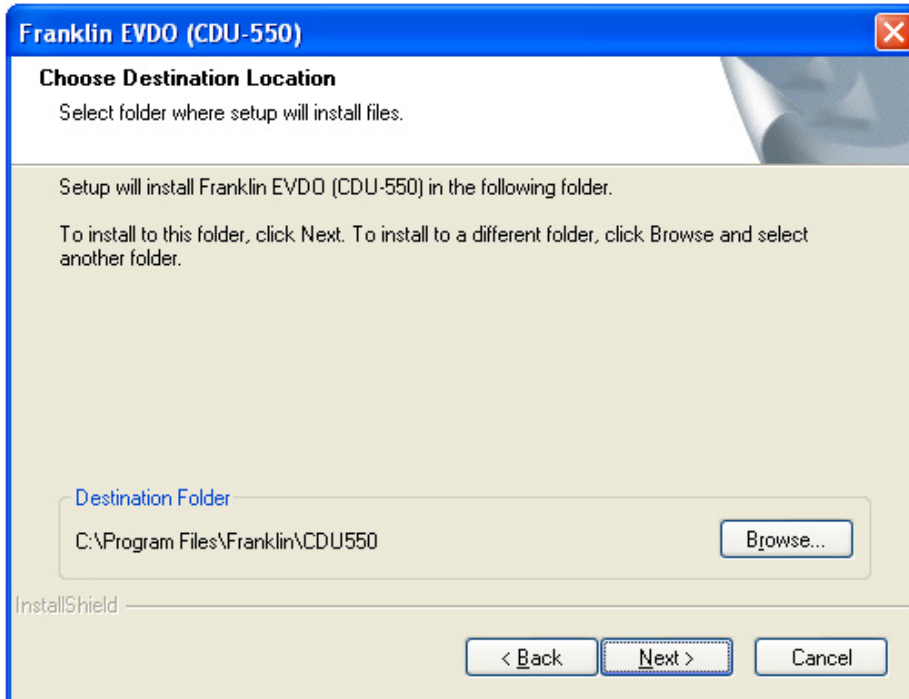
Start Auto Run



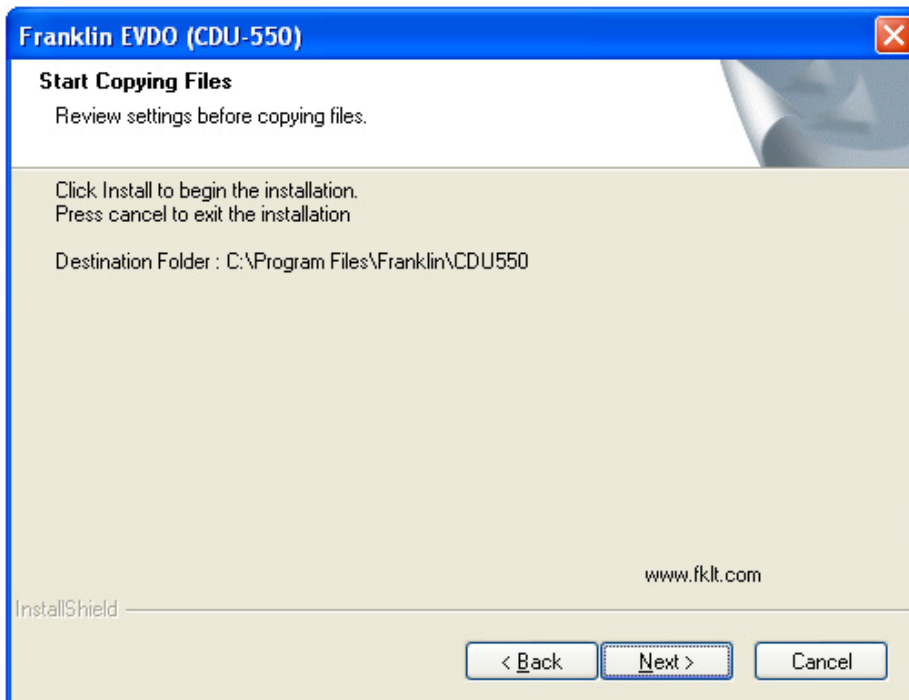
Install Shield Wizard... click 'next'



Choose the installation directory and click "Next" to continue.

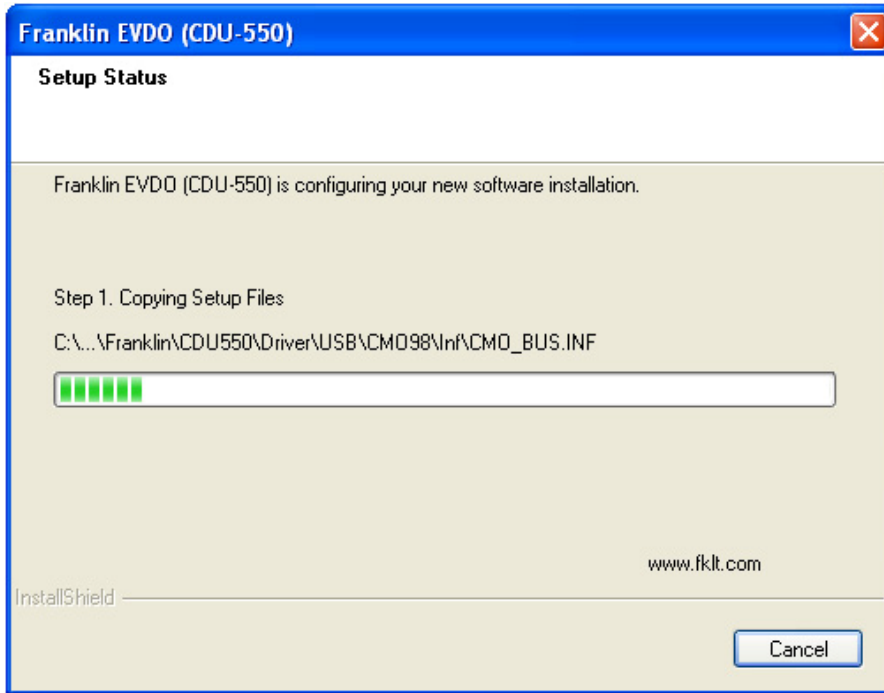


Click "Install" to continue.

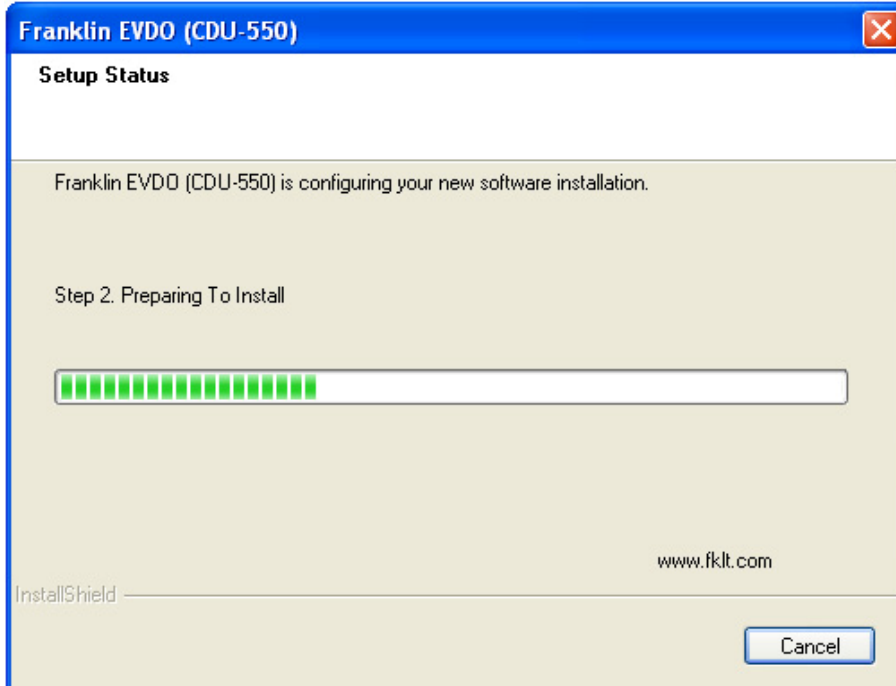


CMOTech Modem is configuring your new software installation.

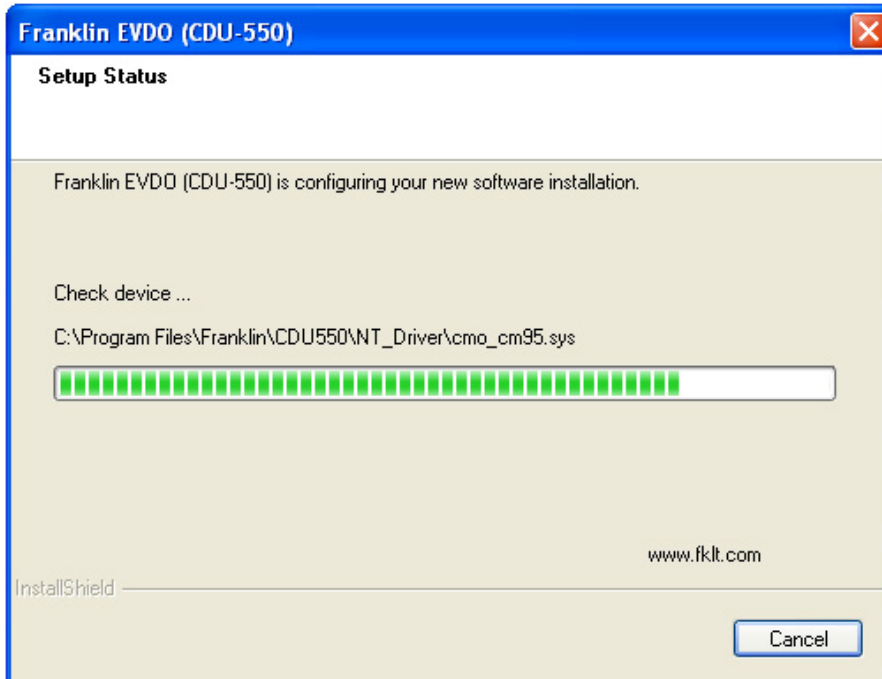
Copying Step1 File



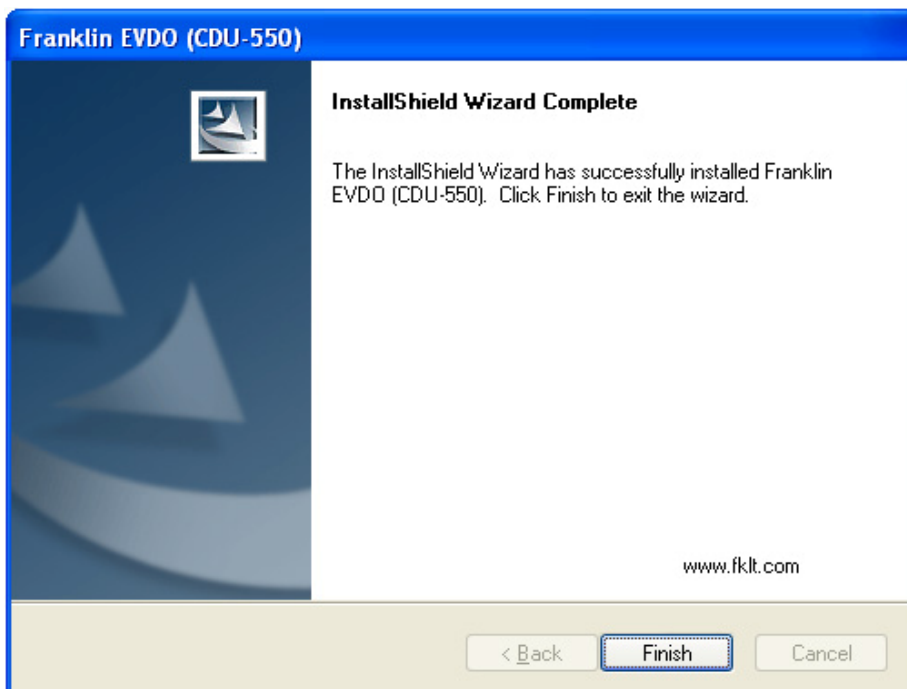
Copying Step2 File



Check device



Installation Complete. Click **Finish** and remove the installation CD.



Insert Modem

Please Insert Modem

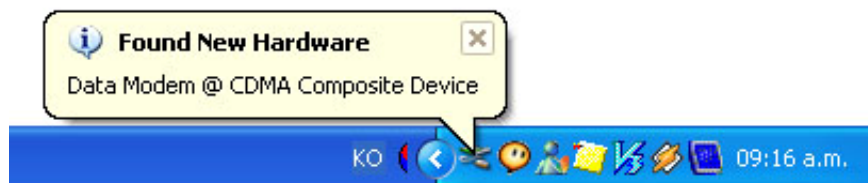
On Window 2000

As inserting Modem on Window 2000, there will not be any window and users can run applications after the device is detected.

On Window XP

If your operation system is XP on inserting Modem, you can see Find New Hardware Dialog.

Step 1 - Data Modem @ CDMA Composite Device Install



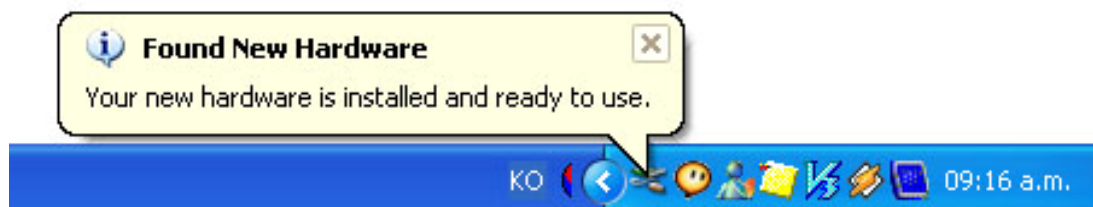
Step 2 - Data Modem @ CDMA(5553) Install



Step 3 - Data Modem @ CDMA Diagnostic Serial Port(WDM)(5553) Install



Modem Driver Install Finish



Using the CDU-550 Modem Application Software

During this installation a Shortcut will have been placed on your desktop for the CMOTech Data Modem Application software.



Note : If the modem is connected to the Laptop/PC via serial port, the user will have to select the serial port

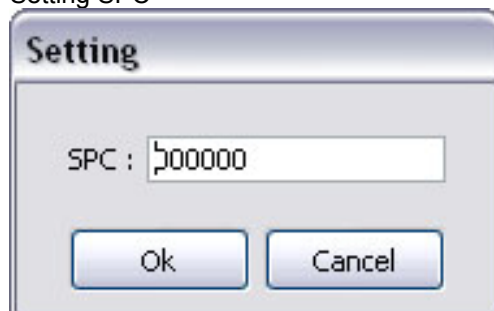
initially when the User Interface software starts up.

On auto start of the Application Software, the first screen you will see Main window.

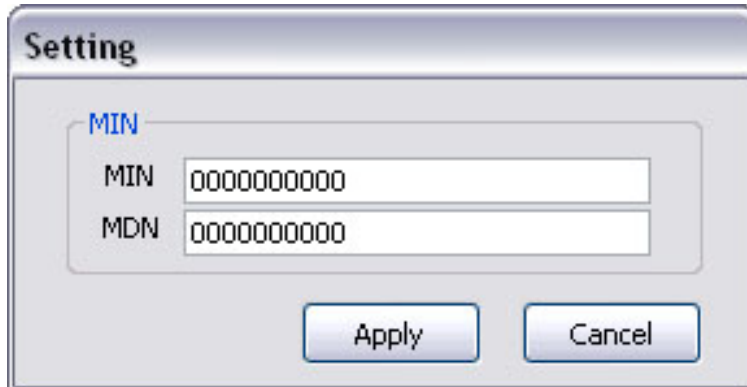
Activate your CMOTech Connection modem



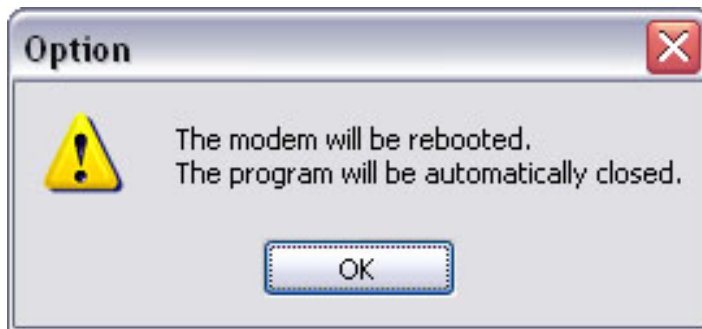
Setting SPC



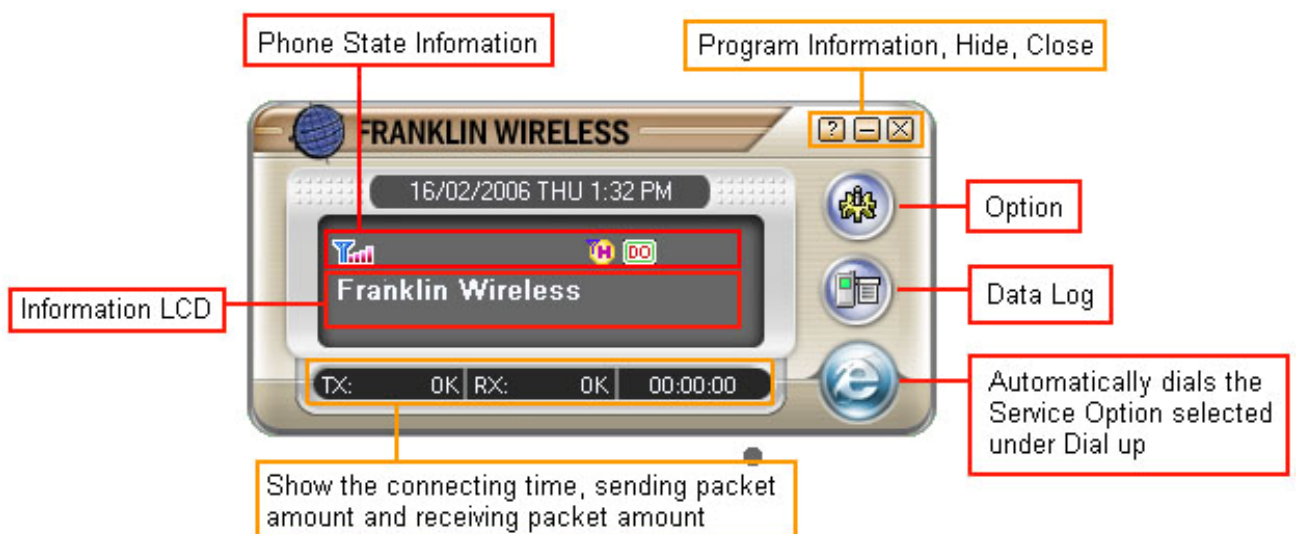
Setting MIN / MDN











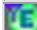


The modem will be rebooted.



Main



Indicator state Icons

Icon	Meaning	Icon	Meaning
	No Signal		Roaming
	Antenna / Signal Strength		Coverage Icon. CDMA 1x available
	Current High Data Rate mode selected : Hybrid Mode (1xEV-DO Preferred) DEFAULT. The modem will automatically look for the highest speed network available in this mode.		Coverage Icon. IS95 available only
	Current High Data Rate mode selected: CDMA 1X only Mode		Coverage Icon. 1xEV-DO available
	Current High Data Rate mode selected: 1xEV-DO only Mode.		Active Data connection
			Dormant Data connection

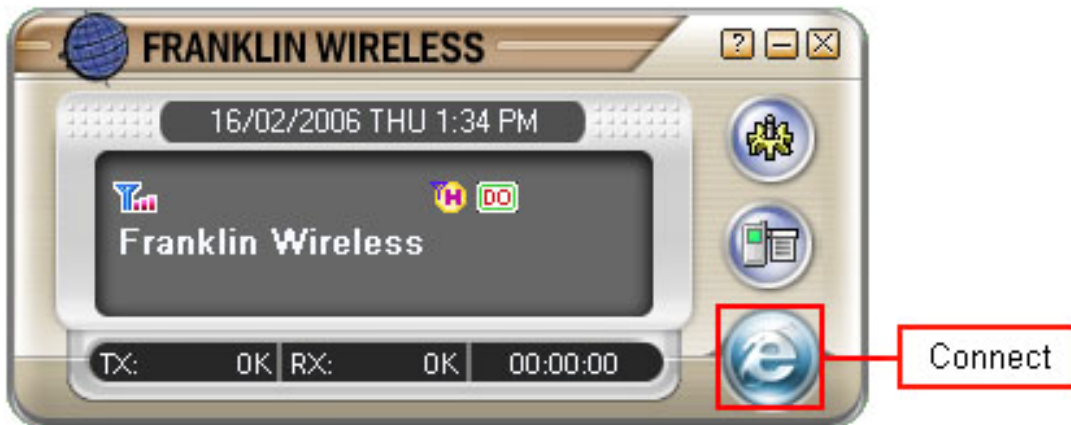
Taskbar Icon



When the Application Software is running in the background, the Windows taskbar will show an icon as above.

To maximize the Application Software, double click on the icon.

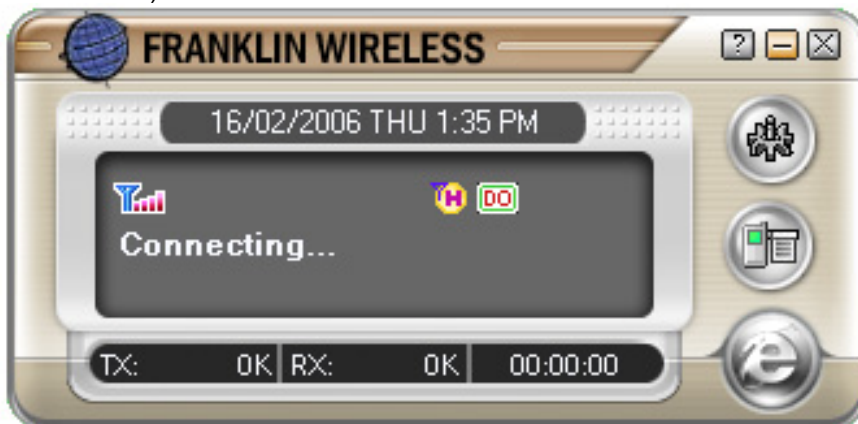
Dial up Network



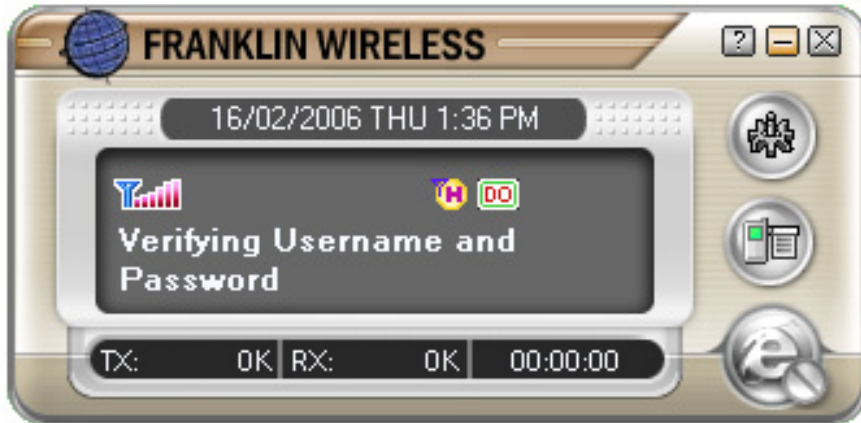
Connection

Clicking the **Connect** button. The Application Software will start dialing the Service Option selected

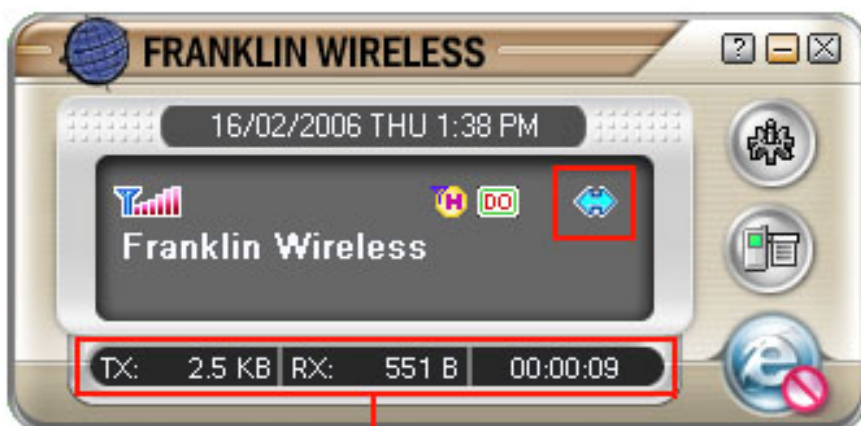
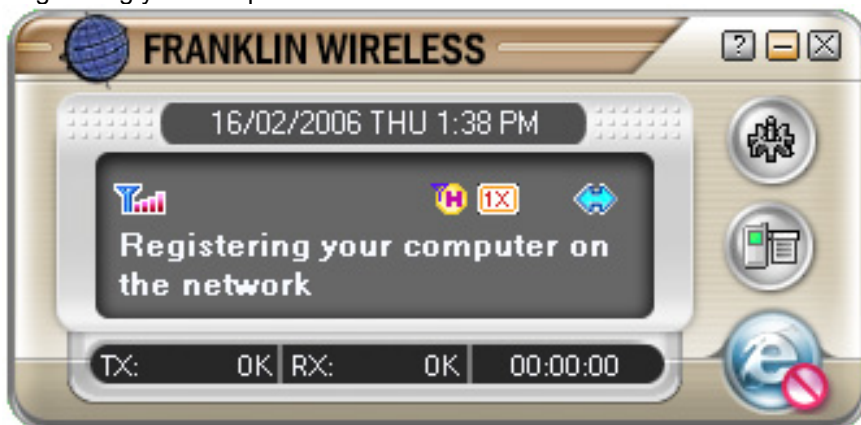
under dial-up when the **Connect** button is clicked (The **Connect** button can be clicked on the main window).



Verifying User.



Registering your computer on the network.



Display connecting information.

You can see above window's right blue icon. This icon shows on connection.

Warning : If you install Windows XP service pack 2, you must turn off firewall in Windows security center.

If you try connecting with turn on firewall, you can see connecting fail.

Click the Windows taskbar's shield-shaped Yellow icon, you can see Windows Security center

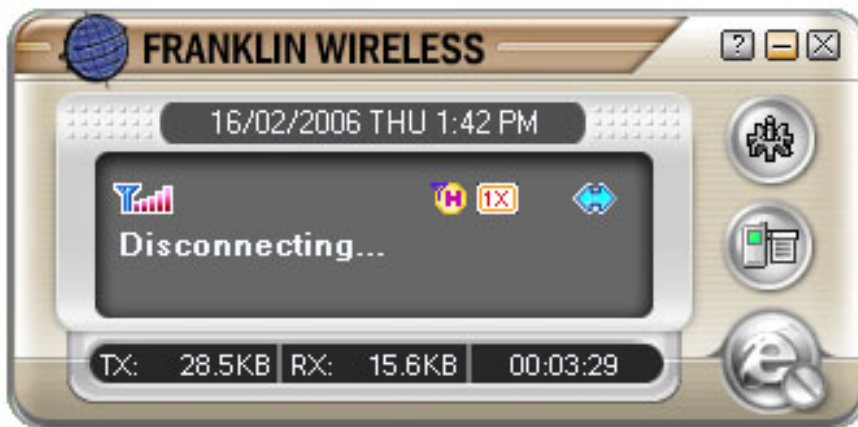
To Disconnect

Clicking the disconnect button on the Main window or Dial up slide window, will disconnect the dialup connection and the modem will switch to idle mode.





Clicking the Yes button.





Active and Dormant state

It is on Active state when an active icon  appears on the window. If having no data transmission during Dialup, it goes to Dormant state.

Users can discern that it is on Dormant state with an icon  displayed on the screen.

Option

General



NOTE : The **Apply** button must be clicked for any changes to take effect.

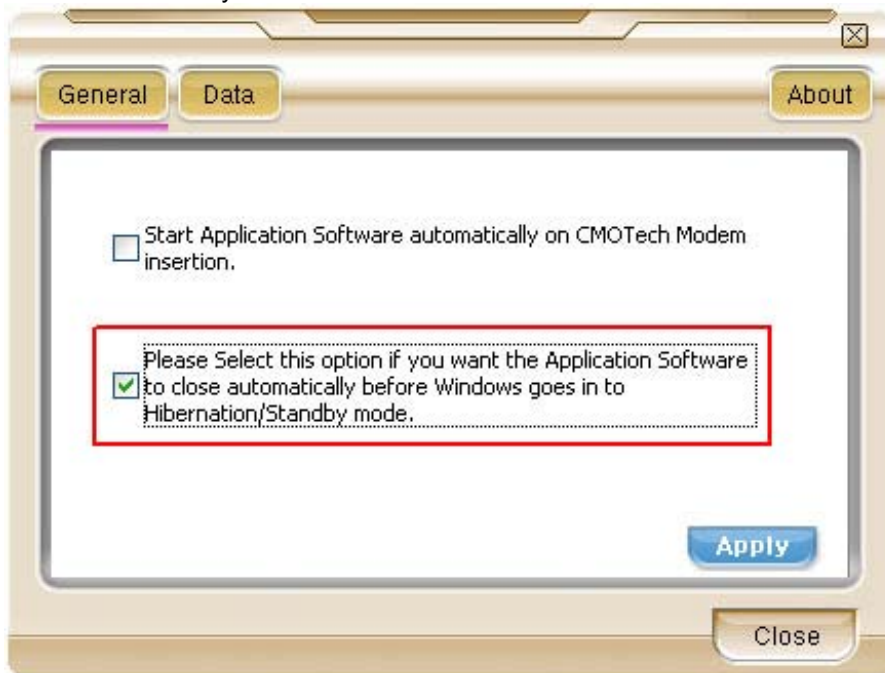
Application Software auto run : This Check box determines whether the Application Software starts automatically

when the Modem is connected. Check the check box and press **Apply** button.



Hibernation : With the Application Software running (idle). Windows will not hibernate or switch to standby mode.

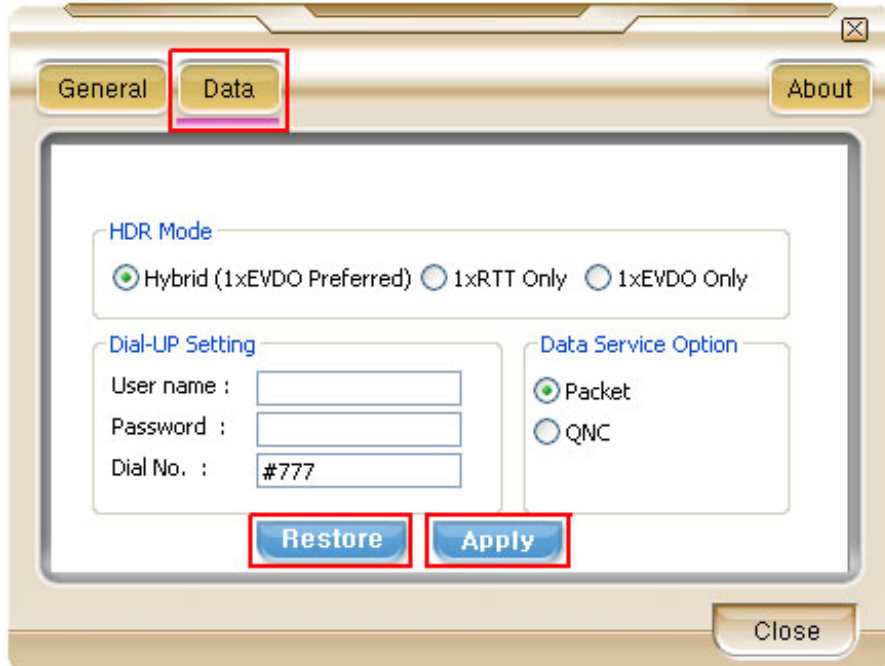
Please select this option under General tab to close UI automatically so that windows can hibernate or switch to standby.



Data

Connection setting

To Setting Dial-Up connection, click Option button and click Data button.



Also to change connecting type, click the radio Button.

NOTE : You can use Packet, QNC type in 1X current coverage. And can t use Packet type in IS 95 coverage.

Connecting is also possible to connect (Dial-up) by clicking the connect button on the main window without opening

the Dial-up setting window. When clicking the connect button, the last Service option will be used for dial up.

If the user changes the username or password and clicks Connect, the Application Software will store the new username and password.

To load the The default username and password select the Restore button, and the Apply button must be clicked.

Dial-up Networking - Packet

Always On is a CDMA 1x internet domain that applies to data (in Kilobytes) based charging packages.

This service allows you to remain connected to the internet all the time.

charges will apply to the amount of data sent and received with this domain.

Dial-up Networking - QNC Standard.

When you are not within CDMA 1x coverage or you have not subscribed to CDMA 1x, you can still connect to

operator's Standard Mobile internet Service using Quick Net Connect, provided you are within CDMA coverage.

Quick Net Connect (QNC) does not require a separate subscription

About

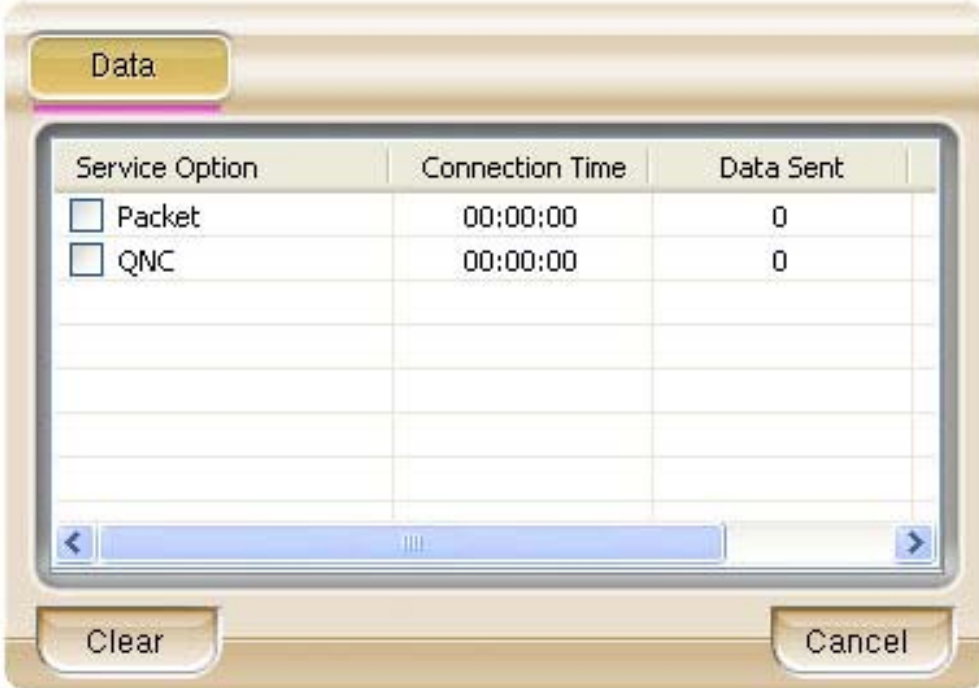
It displays Software/ Firmware Version, PRL ID as shown below.



Data Logs

Data Logs

The User Data Counter will continuously accumulate on each session and will only clear when Clear Data Count is clicked.



The screenshot shows a dialog box titled "Data" with a table containing the following information:

Service Option	Connection Time	Data Sent
<input type="checkbox"/> Packet	00:00:00	0
<input type="checkbox"/> QNC	00:00:00	0

At the bottom of the dialog, there are two buttons: "Clear" and "Cancel".

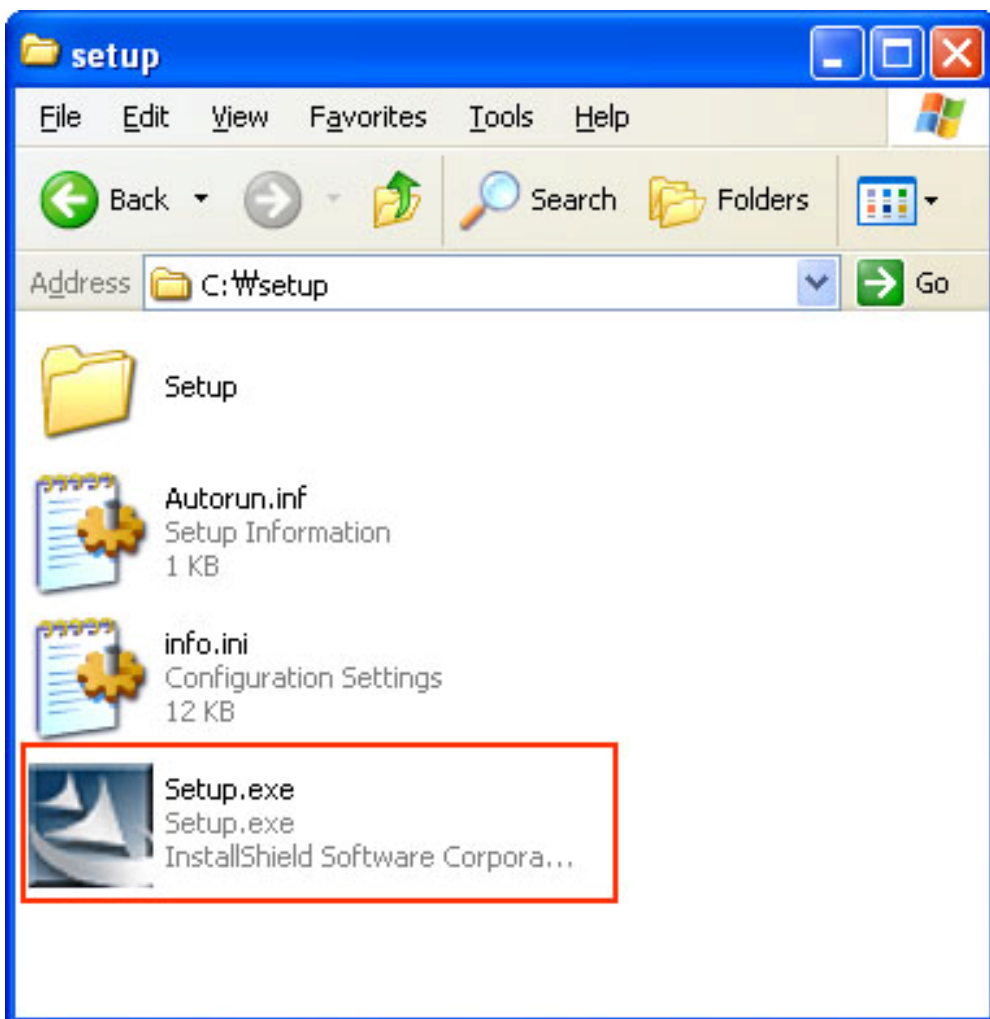
Uninstall

Uninstall CMOTech CDU-550 Modem

To uninstall CMOTech CDU-550 Modem driver, click **Uninstall**.

Start uninstall

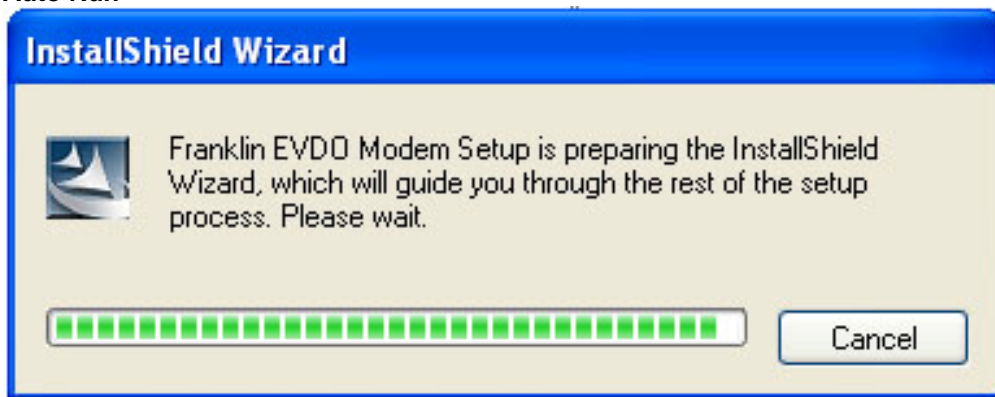
Execute the Uninstall program.



Execute **setup.exe** in installation folder or click **Uninstall**

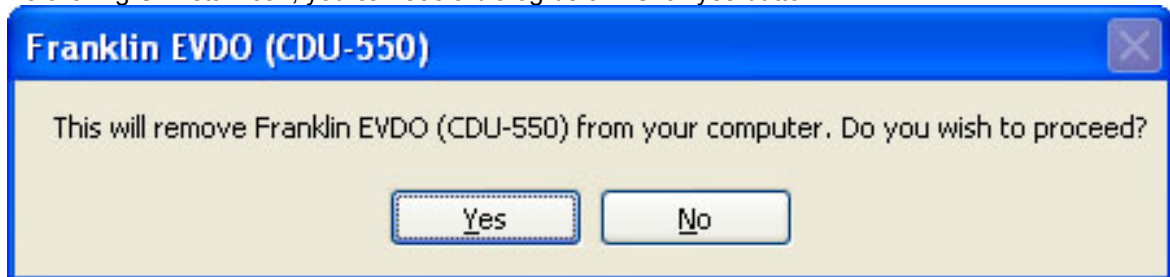


Auto Run



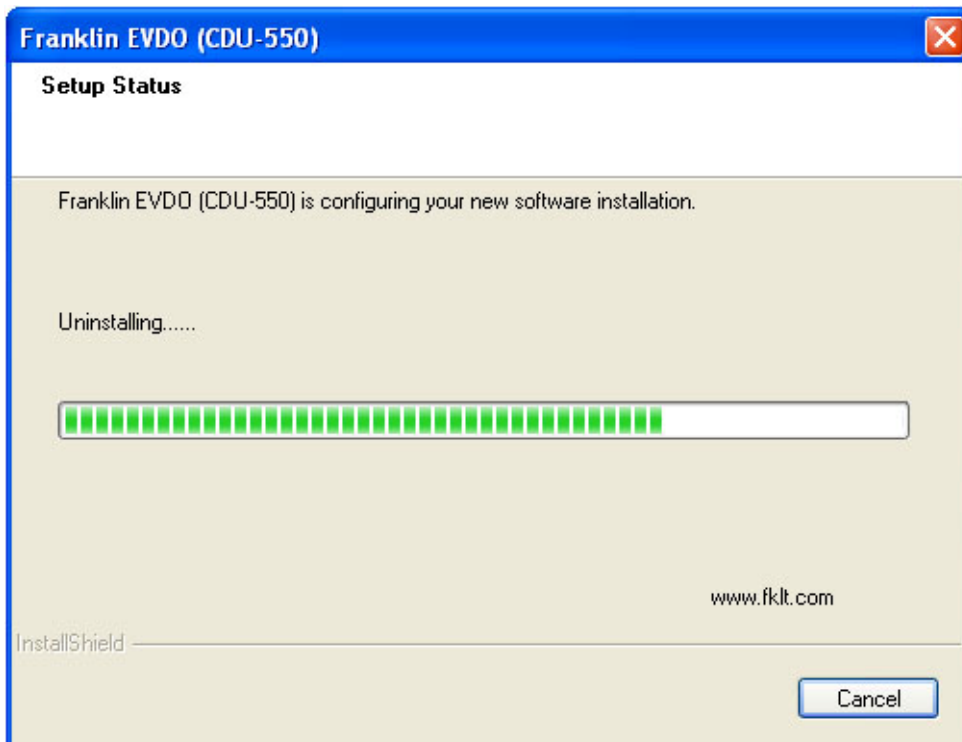
Press button

As clicking Uninstall icon, you can see a dialog below. Click yes button.



Uninstall continue.

Uninstall program remove file in your PC. (Uninstall Program deletes Drivers, Modem and Modem Application Program.)



Uninstall Complete. Click Finish button.

