

BT-0310

**Bluetooth Keyboard
USER'S MANUAL**

Version 1.0

July 2003

REGULATION INFORMATION

The Bluetooth Keyboard must be installed and used in strict accordance with the manufacturer's instructions. This device complies with the following radio frequency and safety standards.

FCC (Federal Communications Commission)

This device complies with Part 15 of FCC Rules. Operation is subject to the following two conditions:

1. This device may not cause harmful interference.
2. This device must accept any interference that may cause undesired operation.

This transmitter must not be co-located or operating in conjunction with any other antenna or transmitter. The equipment has been tested and found to comply with the limits for a Class B Digital Device, pursuant to part 15 of the FCC Rules. These limits are designed to provide reasonable protection against harmful interference in a residential installation. This equipment generates, uses and can radiate radio frequency energy and, if not installed and used in accordance with the instruction, may cause harmful interference to radio communication. However, there is no grantee that interference will not occur in a particular installation. If this equipment dose cause harmful interference to radio or television reception, which can be determined by turning the equipment off and on, the user is encouraged to try to correct the interference by one or more of the following measures:

- Reorient or relocate the receiving antenna.
- Increase the separation between the equipment and receiver.
- Connect the equipment into an outlet on a circuit different from that to which the receiver is connected.
- Consult the dealer or an experienced radio/TV technician for help.

Notice: The Part 15 radio device operates on a non-interference basis with other devices operating at this frequency. Any changes or modification not expressly approved by the party responsible could void the user's authority to operate the device.

R&TTE Directive

This device complies with the specifications listed below:

- ETS 301 489 -1 & -17 General EMC requirements for Radio equipment.
- ETS 300 328 Technical requirements for Radio equipment.
- EN60950 Safety Requirements for Radio equipment

LICENSED SOFTWARE

© Copyright 2000 – 2003, WIDCOMM, Inc. (“WIDCOMM”). All rights reserved.

Warning: This software and accompanying documentation are protected by copyright law and international treaties. Unauthorized reproduction or distribution of this software, or any portion of it, may result in severe civil and criminal penalties, and will be prosecuted to the maximum extent possible under the law.

Use of this software is governed by the terms of the end user license agreement that accompanies or is included with such software. Unless otherwise noted in the end user license agreement, or herein, no part of the documentation accompanying this software, whether provided in printed or electronic form may be reproduced in any form, or stored in a database or retrieval system, or transmitted in any form or by any means, or used to make any derivative work (such as translation, transformation, or adaptation) without the express, prior written consent of WIDCOMM.

Trademark(s) TM and Registered Trademark(s) [®]

WIDCOMM and the WIDCOMM logo are trademarks of WIDCOMM, Inc.

Bluetooth and the Bluetooth logos are trademarks owned by Bluetooth SIG, Inc., U.S.A. and licensed to WIDCOMM, Inc.

Microsoft, Windows, Outlook are registered trademarks of Microsoft Corporation.

Other brand and product names may be registered trademarks or trademarks of their respective holders.

Contents

1. Introduction	5
2. Introducing Bluetooth Keyboard.....	6
3. Hardware Installation.....	8
4. Create a Bluetooth Keyboard Connection	9

1. Introduction

Welcome to join Bluetooth wireless world. This installation guide contains introductions for setting up the Bluetooth Keyboard.

System Requirements

- Processor: Intel Celeron / Pentium III / Pentium IV; AMD Duron / Athlon
- Operating System: Microsoft Windows 2000 / XP
- Bluetooth USB Dongle Device
- Widcomm software version 1.4 or latest

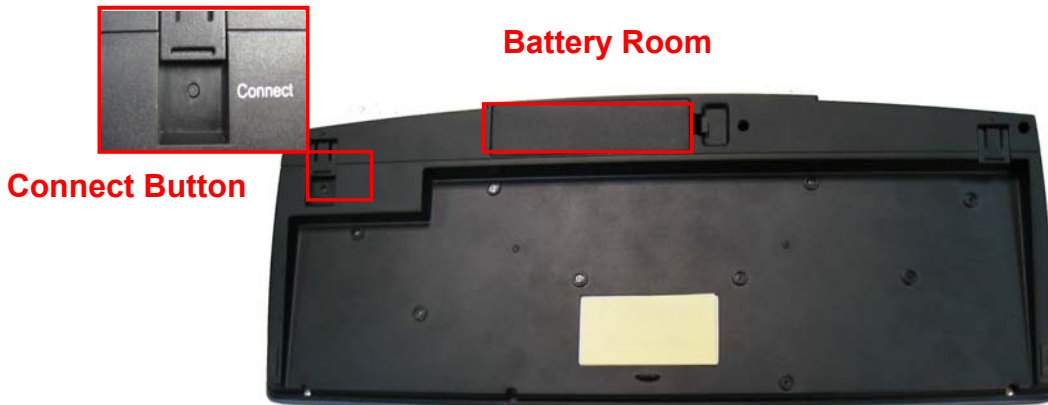
What's in this package

- Bluetooth keyboard
- USB cable
- User's manual CD
- Quick start guide

















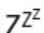
How to begin

- You must set up the Bluetooth Keyboard Hardware. Turn to page 8.
- You must create the Bluetooth Connection. Turn to page 9.

2. Introducing Bluetooth Keyboard



Multimedia Function Keys

	WWW-Back		Volume up
	WWW-Forward		Volume down
	WWW-Refresh		Mute
	WWW-Stop		Next track
	Search		Previous track
	Favorites		Stop
	WWW		Play/pause
	E-mail		Media select
	Sleep		

Keyboard Displays

- Shows when Num Lock, Cap Lock, Scroll Lock are turned on.
- Bluetooth status LED shows when Low Battery indicator and flashing when keyboard connected with host.
- All LEDs flashing when keyboard is in the discoverable mode.

USB Connector

- When standard USB keyboard, plug the USB cable to this connector and host USB port.

Connect Button

- If re-pair, you can press connect button to clear the virtucable.

Battery Room

- 4 AA Batteries

3. Hardware Installation

The keyboard uses 4 pieces of alkaline batteries. Rechargeable batteries are not recommended.



Step1. Remove the battery compartment cover from the bottom of Bluetooth keyboard.



Step2. Insert the batteries. Make sure that the “+” and “-” in each battery matches the “+” and “-” on each slot.



Step3. Put the cover on.

4. Create a Bluetooth Keyboard Connection

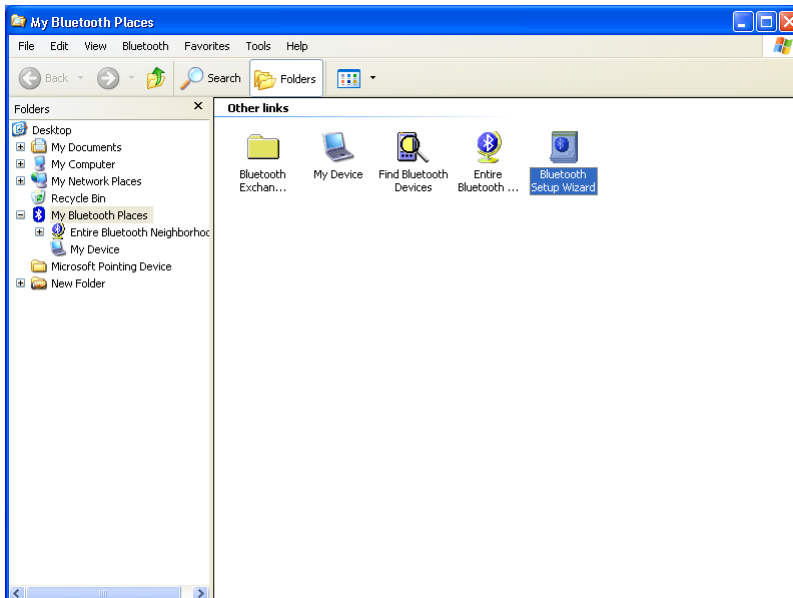
Open a connection to a Bluetooth Human Interface Device using one of these techniques:

Step1. Press Connect Button on back of keyboard

Step2. Double click "My Bluetooth Places" Icon



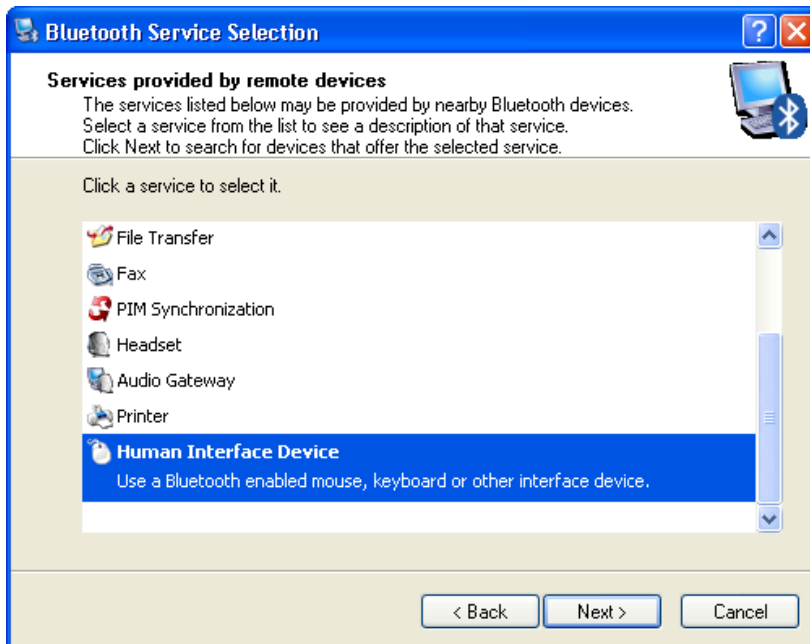
Step3. Double click the "Bluetooth Setup Wizard" Icon



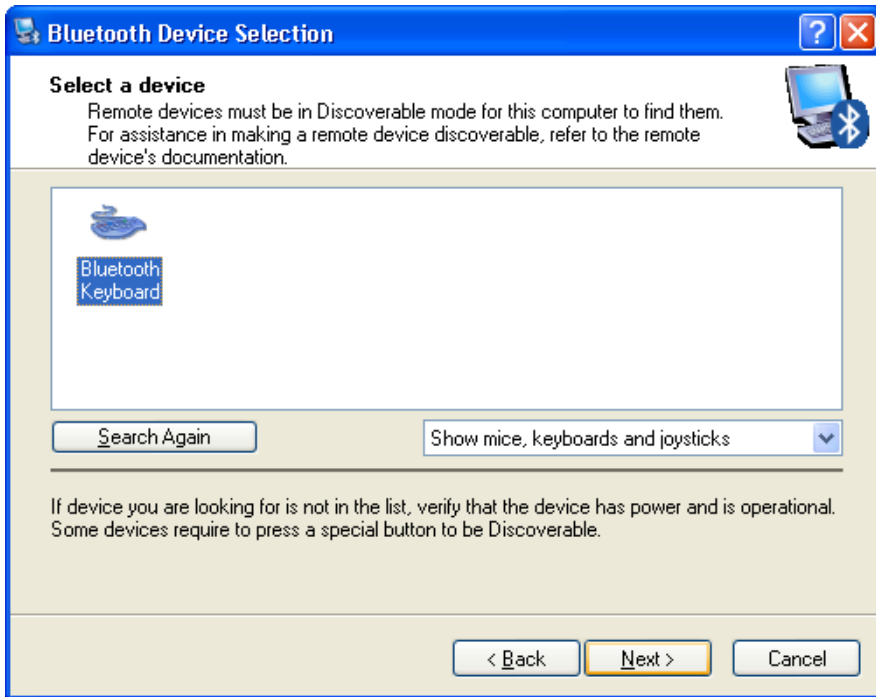
Step4. Select setup scheme, then press "Next"



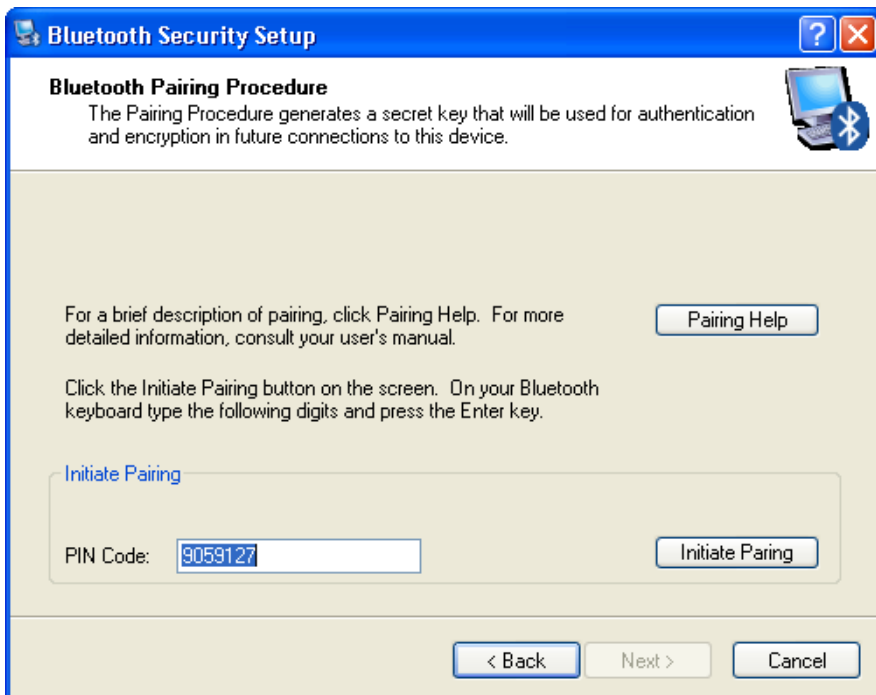
Step5. Select Human Interface Device, then press "Next"



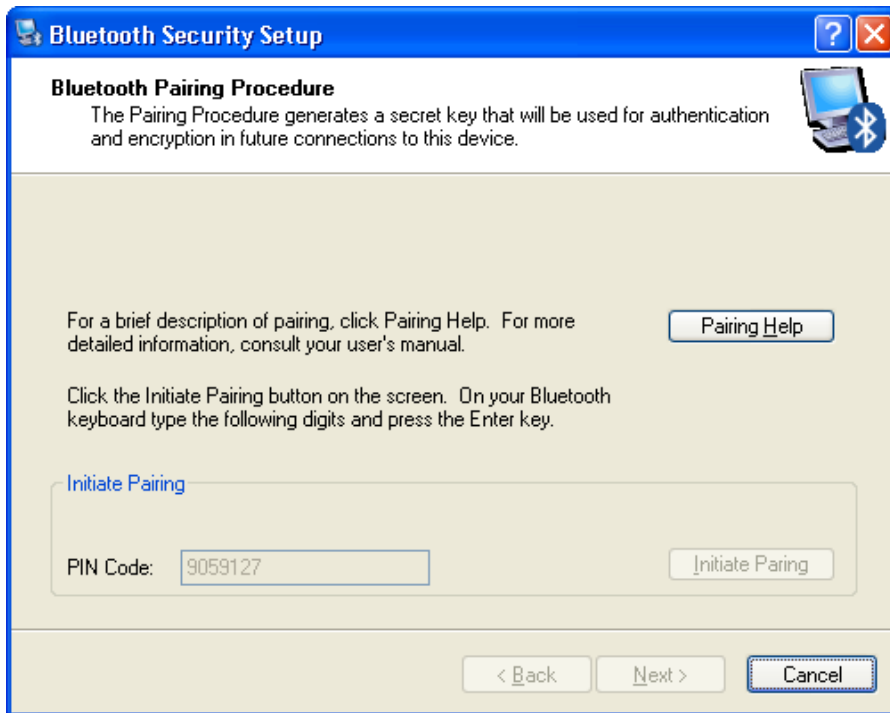
Step6. Select Device, then press "Next"



Step7. Press "Initiate Pairing" Button



Step8. Input PIN Code on the screen from Bluetooth keyboard, then press "Enter"



Step 9. Finish

