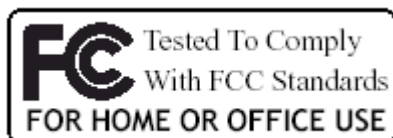


Bluetooth Printer Combo Adapter

BT-0260-V2

USER'S Manual (For Widcomm Driver)

VERSION 1.0



© All rights reserved.

All trade names are registered trademarks of respective manufacturers listed.

The Bluetoothname and the Bluetoothtrademarks are owned by BluetoothSIG,Inc.

This manual may not be copied in any media or form without the written consent of original maker.

TABLE OF CONTENTS

WELCOME	1
Features	1
System Requirements	1
Before You Start	2
Connecting your Bluetooth USB Adapter with PC	2
Printer Combo Adapter	2
Getting to Know Your Printer Combo Adapter	3
Function of LEDs During Printing	3
WIDCOMM BLUETOOTH SOFTWARE DRIVER	4
UPDATE BLUETOOTH DRIVER	6
SELECT BLUETOOTH SERVICES	9
MY BLUETOOTH PLACES	11
ADD LOCAL PRINTER.....	13
START PRINTING.....	14
CHANGE PRINTER	15
MULTIPLE PRINTER COMBO ADAPTERS	17
Configure the first Printer Adapter	18
Configure the second Printer Adapter	19
Configure the third Printer Adapter	20
Start Printing	22
Change Printer	23
PRINTER ERROR MESSAGE	25
CANCEL PRINTING JOB	26
RESET HANGED BLUETOOTH	26
APPENDIX A	27
APPENDIX B	28
INFORMATION TO USER.....	29
WARRANTY	31

WELCOME

Thank you for your purchase of the Bluetooth Printer Combo Adapter. Featuring Bluetooth wireless technology, Bluetooth Printer Combo Adapter creates cable-free printing connections between your desktop PCs and your printers. Bluetooth Printer Combo Adapter is compatible with all Bluetooth v2.0+EDR-certified devices and you can connect your computing devices and printers 100 meters away without cables in your working environments, such as home or office.

FEATURES

- ☐ Compliant with Bluetooth standard version 2.0+EDR .
- ☐ Support for Microsoft Windows 98SE, Me, 2000 and XP.
- ☐ Operating distance of up to 100 meters in free space.
- ☐ Bluetooth Class I.
- ☐ Support both USB and 1284 printer port interfaces.
- ☐ Both SPP and HCRP print service profiles supported.
- ☐ Easy operation and setting up.

SYSTEM REQUIREMENTS

- ☐ PCs must have a Bluetooth device installed, such as a Bluetooth USB dongle. It allows you to communicate with Printer Combo Adapter.
- ☐ PCs must have a Bluetooth device driver installed, such as Widcomm driver. It is always accompanied with your Bluetooth dongle device purchased. Furthermore, make sure the driver is of the latest revision which supports Bluetooth print service.
- ☐ PCs can have different printer drivers installed, printer drivers such as HP, Epson, Canon...etc. You can install at least one before using Printer Combo Adapter.
- ☐ USB printer shall follow USB printer specification as downloadable from USB forum - <http://www.usb.org>. Some printers do not follow this specification and can not be used.

BEFORE YOU START

1. Confirm Box Contents



Printer Combo Adapter



Power Adapter



Manual

IMPORTANT

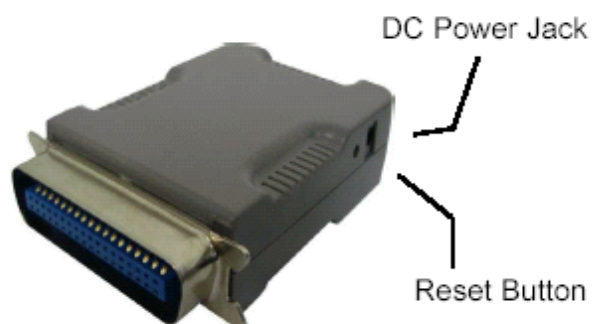
PLEASE READ ALL INSTRUCTIONS AND THE SAFETY GUIDE BEFORE YOU PLUG THE UNIT INTO THE PRINTER.

CONNECTING YOUR BLUETOOTH USB ADAPTER WITH PC

- Connect your Bluetooth USB dongle with our PC.
- Install Widcomm Bluetooth software driver.



PRINTER COMBO ADAPTER



GETTING TO KNOW YOUR PRINTER COMBO ADAPTER

Printer combo adapter supports two interfaces which can be used to connect with your printer.

1). IEEE-1284 - It is a 36-pin male connector on the front. Connect it to your printer. If your printer hides its female connector inside its case, then you have to open it.

2). USB - It is a USB type A connector. You need to connect one end of the USB cable to printer combo adapter, then connect another end to the printer.

Note: If your printer supports both interfaces, we recommend you to choose just one to connect with printer combo adapter. If you connect printer combo adapter to both of them, 1284 interface will be the functioning one.

3). Apply power to printer combo adapter by using the power adapter accompanied.

4). RESET button is to re-initialize the printer adapter, it is normally left unused. You also can un-plug the power adapter, then plug it again to get the same result.

FUNCTION OF LEDS DURING PRINTING

● POWER LED

- Power LED turns on when POWER is applied to printer combo adapter.

● BLUETOOTH LED

- Bluetooth LED is blinking when Bluetooth link is established but no data is transmitted on the line.
- Bluetooth LED is ON when PC is wirelessly sending data to printer through printer combo adapter.

● PRINTER LED

- Printer LED is ON when there is a USB or parallel (IEEE-1284) printer connected to the printer combo adapter.
- Printer LED is OFF when no printer is connected.
- Printer LED is blinking when PC is sending data to printer through printer combo adapter.

WIDCOMM BLUETOOTH SOFTWARE DRIVER

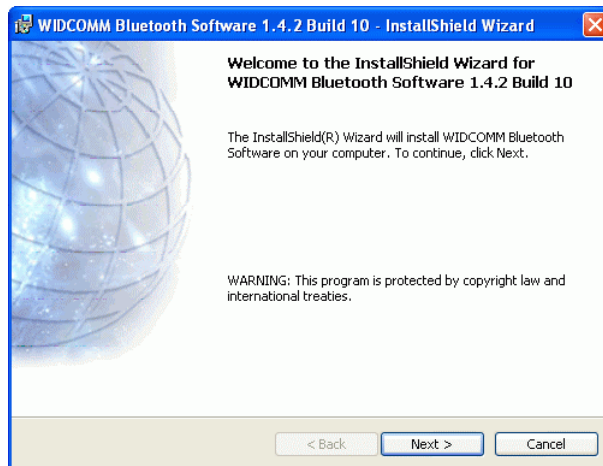
NOTE: Skip this section if you already installed Widcomm driver in your PC. This software is **NOT** included in our Printer Combo Adapter package. We assume you already purchased a Bluetooth USB dongle and it already bundled this software. We also assume you already installed this driver in your PC. If NOT, please read the following messages to learn how to do it.

You need to install a software driver which supports Bluetooth print service, and Widcomm Bluetooth Software Driver ver. 1.3.2.7. or after is the one you need. Most of the time, this Widcomm Driver is accompanied with the Bluetooth USB Dongle you purchased. Try to download the latest revision because print service may not be supported in the previous releases.

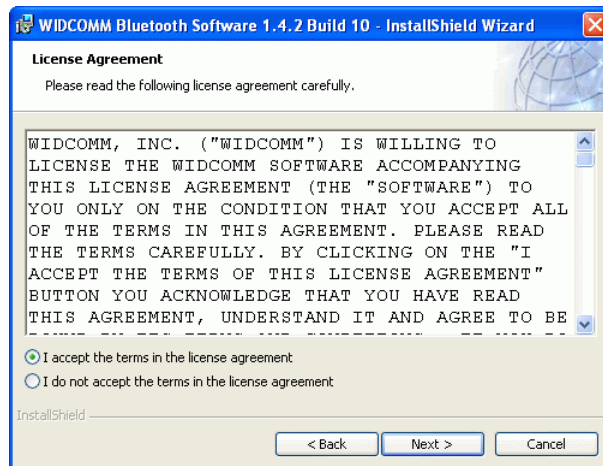
There are other Bluetooth services which Widcomm driver provides. We will only emphasize on the print service, and you may try to know other services by you own.

The following steps tell you how to install the Widcomm driver.

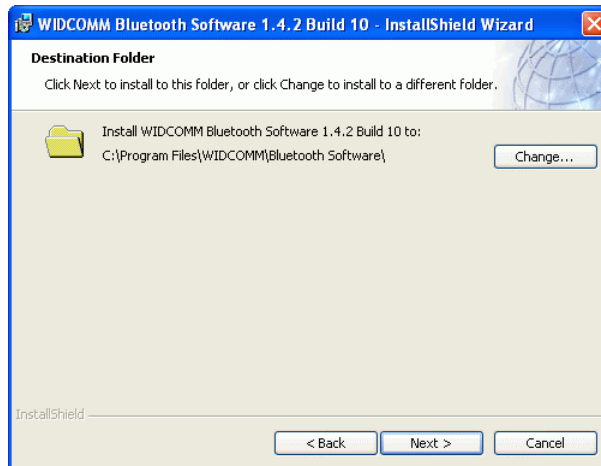
Step 1: Find Setup.exe from the given Widcomm Driver CD or downloaded driver files, and double click on it to install Widcomm Bluetooth Software. It opens the InstallShield Wizard dialog box, then click **Next**.



Step 2: Accept the software license agreement. Click **Next**.

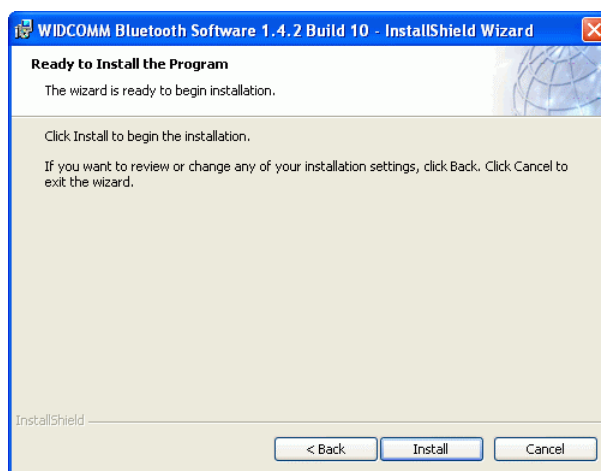


Step 3: Select destination folder, you can choose the default or change to your favorite.

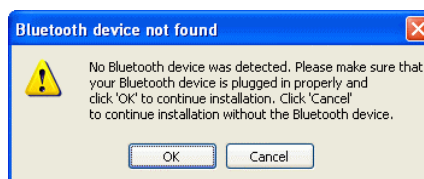





Step 4: Click **Install** to start the installation.

If you have not plugged in Bluetooth Dongle onto your PC before, one reminding window will show up to ask you to plug in it before installation can be finished.



Step 5: Click **OK** to continue the installation.



Step 6: Installation is complete. **My Bluetooth Places**  should appear on your desktop and a similar icon also appears on the lower right corner of your screen. You can double click  on desktop or right click  on the lower right corner of your screen, then click “**Explore My Bluetooth Places**” menu to start “My Bluetooth Places” program.



UPDATE BLUETOOTH DRIVER

NOTE: Read this section only if you are using Windows XP SP1 (or later releases). Skip otherwise.

This section is a reference topics to tell you how to prevent conflict when installing your USB Bluetooth Dongle in your PC. It has **NOTHING** to do with Printer Combo Adapter which you purchased. Here, we assume you already purchased a Bluetooth USB dongle and it is using CSR technology (i.e. chipset).

Plug a USB Bluetooth Dongle into your PC.

Windows XP SP1 (or after) is supporting Bluetooth. It will automatically create Bluetooth drivers for you. These drivers do not work with Widcomm driver, and you need to update them.

Step 1:

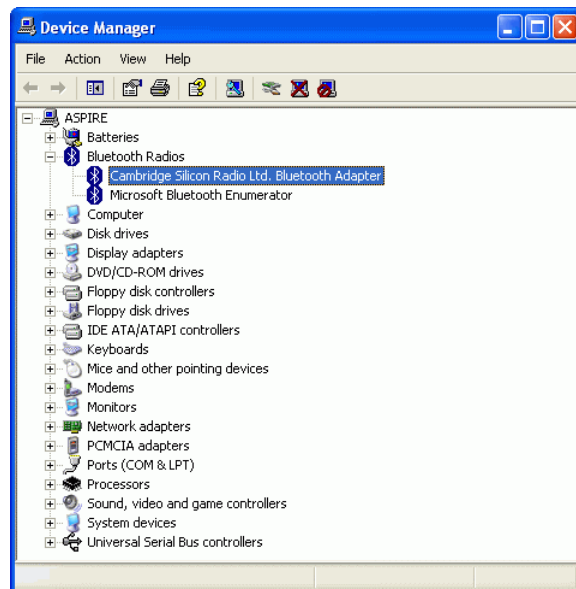
Click **START**

Select **Control Panel**.

Select **System**.

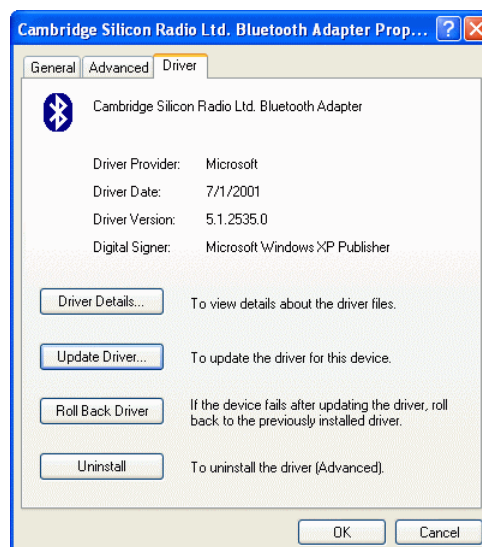
Select **Device Manager**.

In **Bluetooth Radios**, you can find two Bluetooth devices.



Step 2:

Double-click **Cambridge Silicon Radio Ltd. Bluetooth Adapter** or right-click on it and then select **Property**, click on **Driver** page.



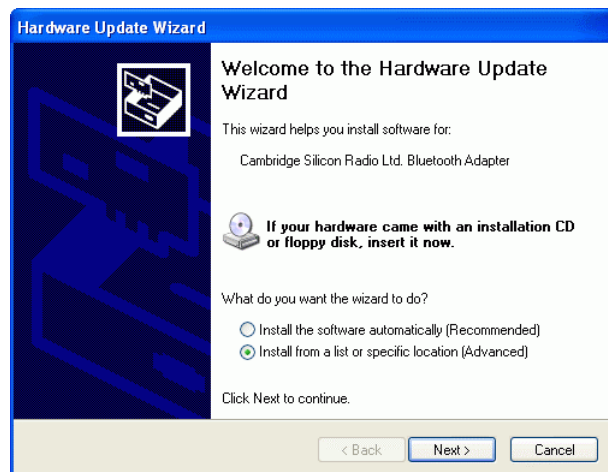
Step 3:

Click Update Driver....

Step 4:

Default is: **Install the software automatically (Recommended)**.
Please do not select it.

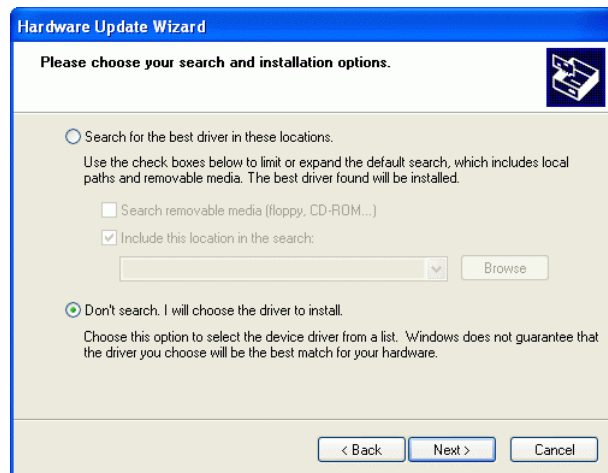
Select **Install from a list or specific location (Advanced)**.
Then click Next.



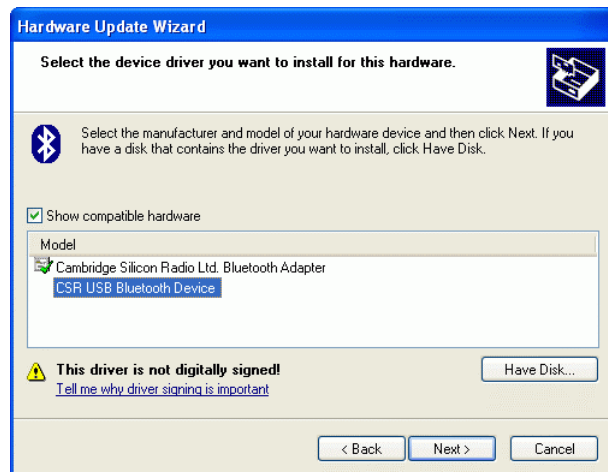
Step 5:

Default is **Search for the best driver in these locations**. Please do not select it.

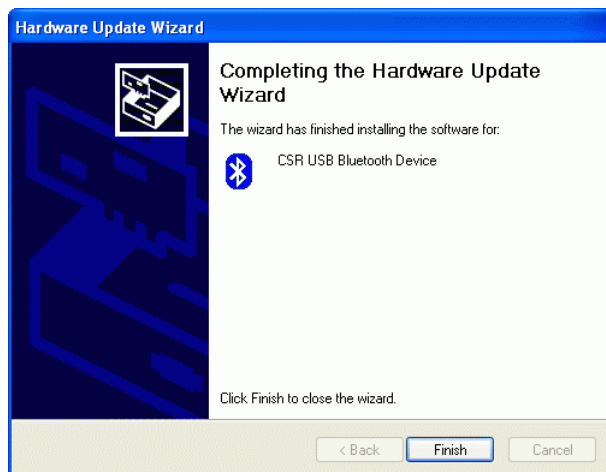
Select **Don't search. I will choose the driver to install**. click Next.



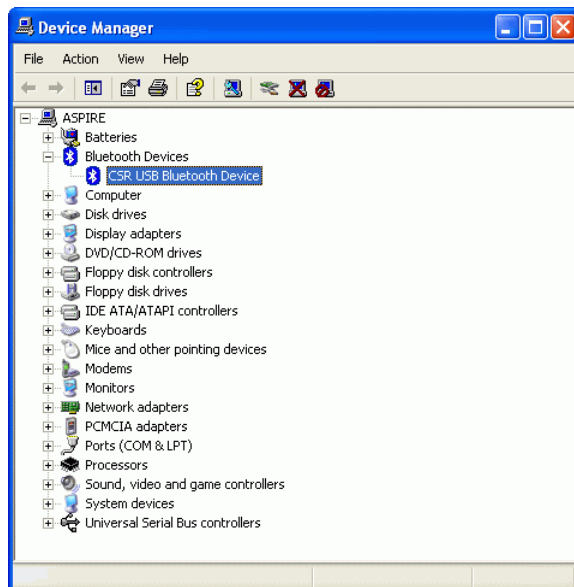
Step 6: Select **CSR USB Bluetooth Device**, then click Next.



Step 7:
Click Finish.



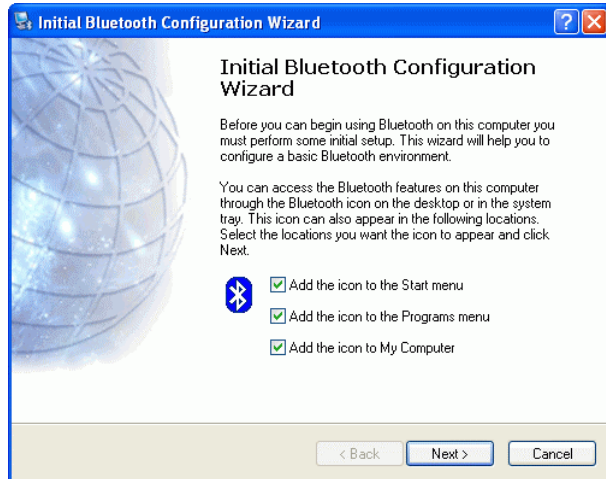
Step 8:
After these update driver steps,
you will see only one Bluetooth
device in the Device Manager.
This is what Widcomm driver
really supports.



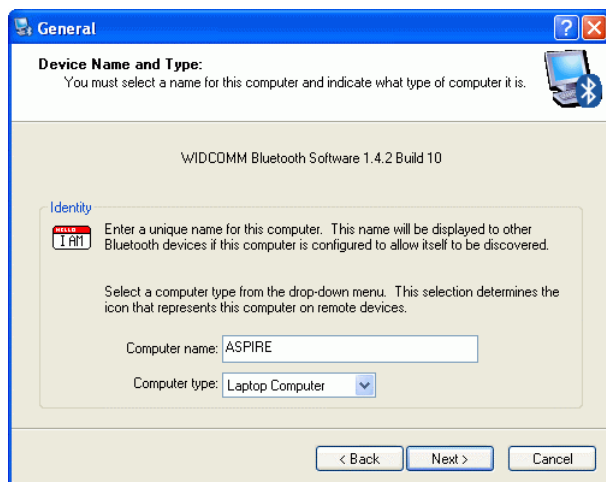
SELECT BLUETOOTH SERVICES

When the first time Widcomm driver is installed, and USB Bluetooth Dongle is plugged to your system, you will be asked to configure your Bluetooth services for your system.

Step 1: Double-click on the Bluetooth icon on the lower-right corner of the screen, you will see configuration wizard, Click Next button.



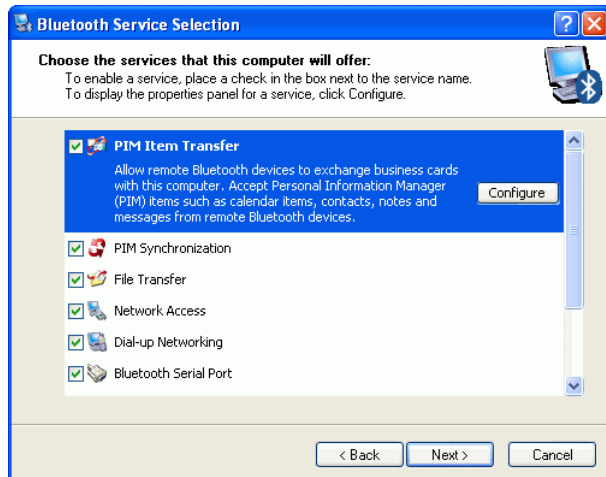
Step 2: Assign computer name and specify computer type, then click Next button. These can be customer defined.



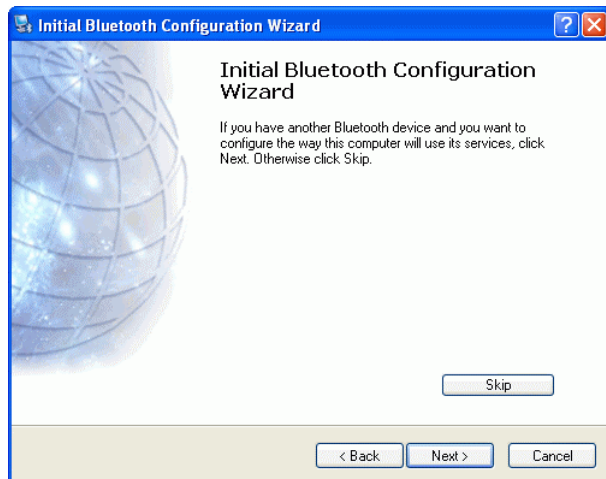
Step 3: Click Next button to configure Bluetooth services.



Step 4: The default setting is that all services are available, you can check or uncheck one or more services, then click Next button.



Step 5: click skip and then click Next button.




Step 6: configuration is completed.

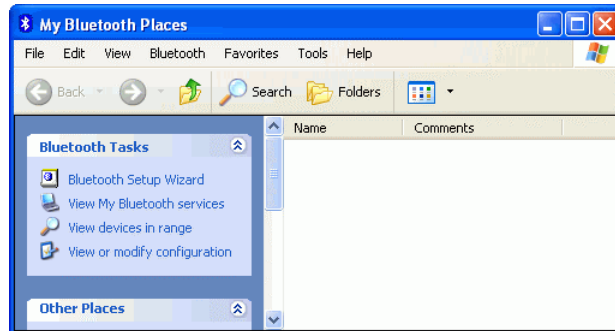


MY BLUETOOTH PLACES


Step 1:

Method 1:

Double click  on your desktop. Click Folder on the toolbar. Folder window will appear on left side of your screen.



Method 2:

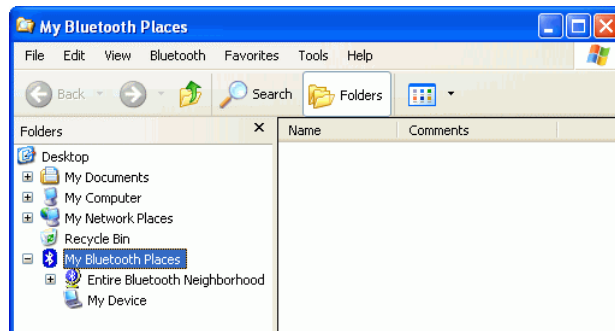
Right click  on the lower right hand corner of your screen. Select **Explore My Bluetooth Places**.



Two folders appear on the window.

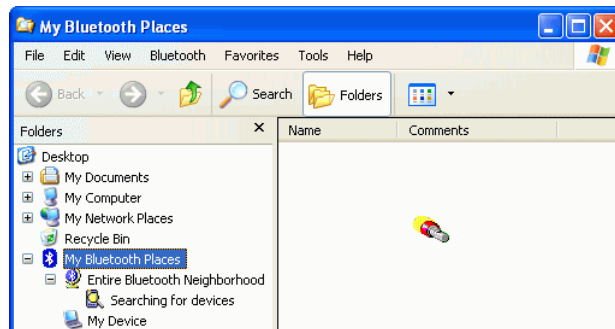
They are :

Entire Bluetooth Neighborhood
and My Device.

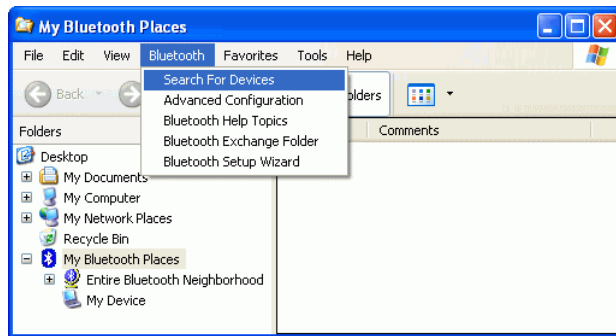


Step 2:

Click **Entire Bluetooth Neighborhood** to search for devices available to you. Once Bluetooth devices are detected, their icons together with device names will be displayed on the screen.

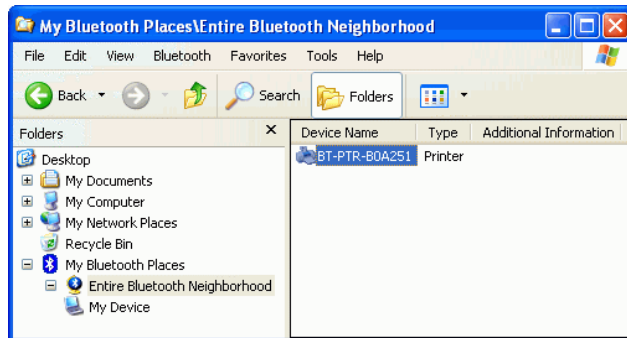


You also may start a search for devices by clicking [Bluetooth](#) from the toolbar.



Step 3:

In this example, One Bluetooth printer device is found in your Bluetooth neighborhood.



Step 4:

Right click on your device icon
Select [Pair Device](#) .

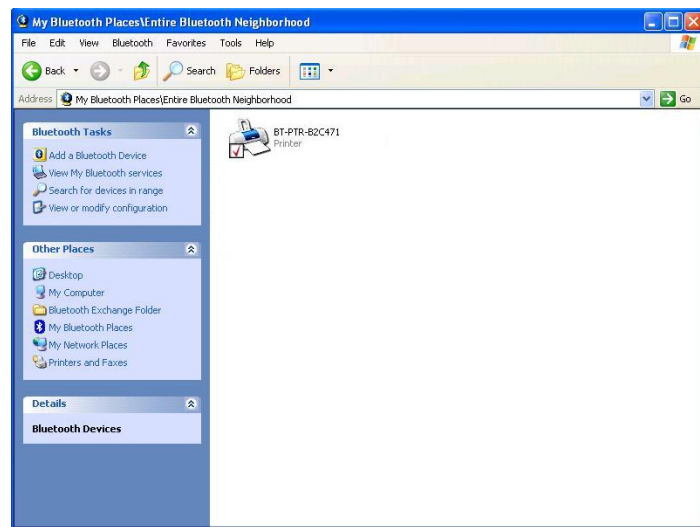


Step 5:

Enter Bluetooth security code
[0000](#) and press [OK](#).



Step 6:
The pairing process is now complete.



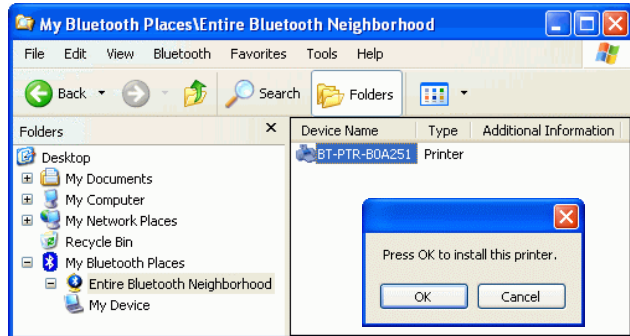
This is the service we want to know. We will look at it later. The “My Bluetooth Places” program provides an easy way to find different application services through Bluetooth connections. A variety of Bluetooth services and explanations can be found in the “Help” file of the “My Bluetooth Places” program.

ADD LOCAL PRINTER

In the following example, we assume a printer combo adapter (with series#: BT-PTR-B0A251) is connected to an EPSON Stylus C61 printer.

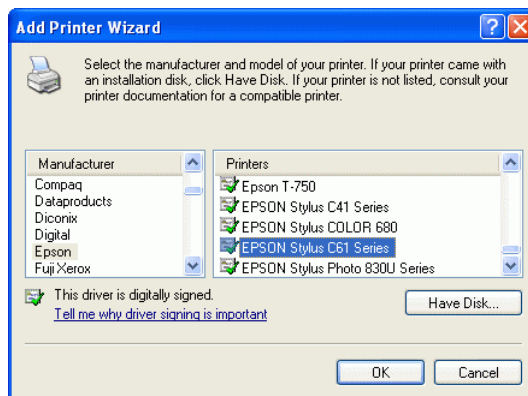
Step 1:

From **MY BLUETOOTH PLACES**, Right click on printer combo adapter folder (with series#: BT-PTR-B0A251), then select OK to install a printer driver for it.



Step 2:

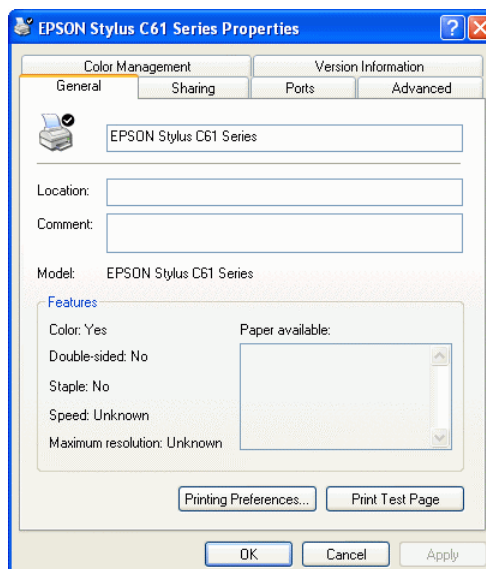
Add Printer Wizard will show up, find the brand name and model number of the printer driver you want this printer adapter to use. It will ask you to install the printer driver if it has not been installed in your system before. If the driver has been installed, Add Printer Wizard will pass very quickly. In this example, we select EPSON Stylus C61 as the printer, supposed its driver was installed before, so just click OK to continue.



Step 3:

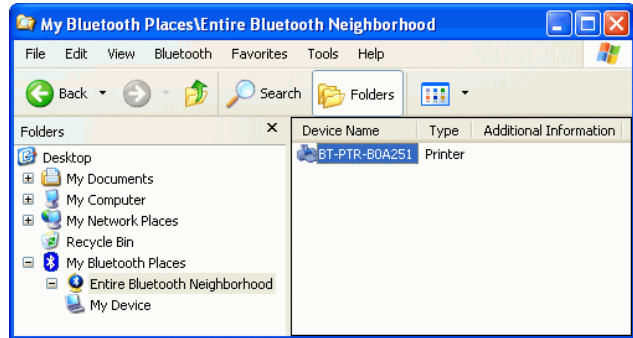
You can assign a name such as **EPSON Stylus C61 Series** to the printer combo adapter just selected. In end user side, you will only find a printer named **EPSON Stylus C61 Series** you will not see any printer named BT-PTR-B0A251.

Click **OK** to complete the installation.



START PRINTING

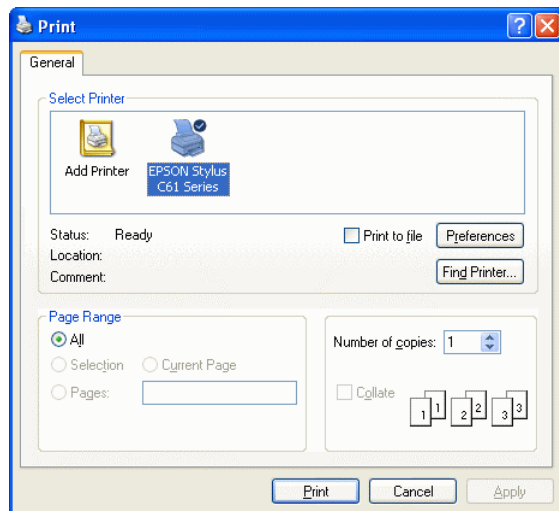
Click **My Computer** icon on the desktop screen, select **Control Panel**, select **Printers and Faxes**, then you can find a Bluetooth Printer is there: **EPSON Stylus C61 Series**.



Print a file by using combo printer adapter is quite straightforward, it is just like the normal way you are printing a file.

For EPSON Stylus C61 Series:

When page range and number of copies screen prompts, select **EPSON Stylus C61 Series** printer, then click **OK**.



EPSON Stylus C61 Series

CHANGE PRINTER

In your home or office, there may be two or three different printers coming from different brands. In previous example, we selected EPSON Stylus C61 color printer as our Bluetooth printer. If we want to change it to another printer, such as EPSON Stylus C82, then we shall know how to change printer driver to a different one.

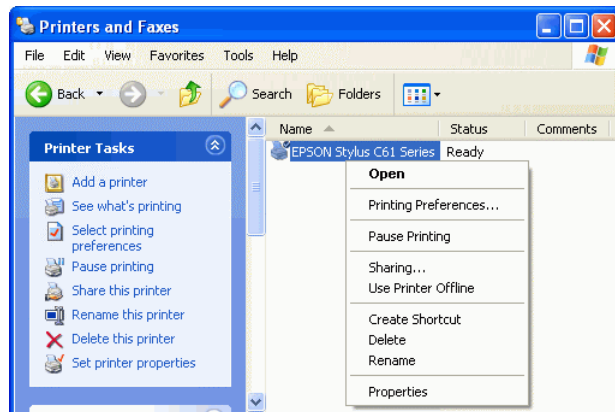
Step 1:

Select **Control Panel**.

Select **Printers and Faxes**.

Right click on **EPSON Stylus C61 Series** printer icon.

Click on **Properties**.

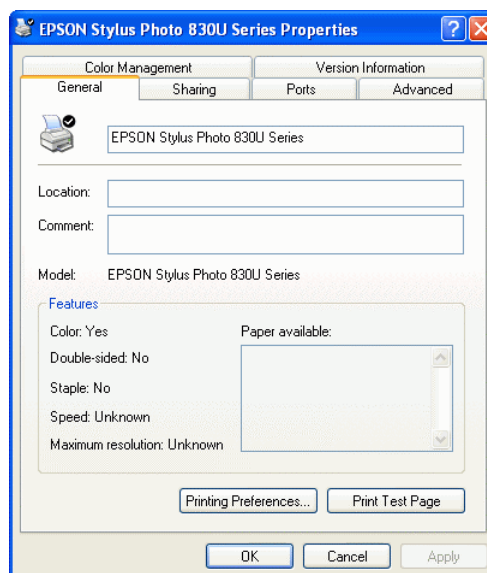


Step 2:

You can change printer name to such as:

EPSON Stylus Photo 830U Series.

Click on **Advanced** tab to see if the driver of EPSON Stylus Photo 830U has been installed before.

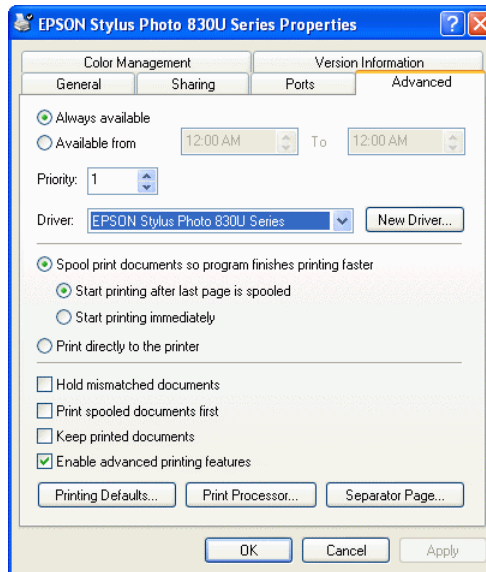


Step 3:

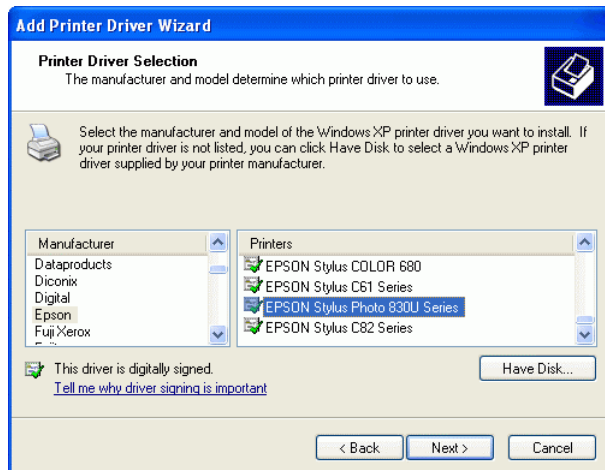
In Advanced setup, try to find the driver of EPSON Stylus Photo 830U.

If there is an EPSON Stylus Photo 830U driver installed before, select it and click **OK** to complete the change.

If there is none, click **New Driver** and follow the instructions to install it.



Once New Driver is selected, this screen will prompt to ask you to install new driver step by step.



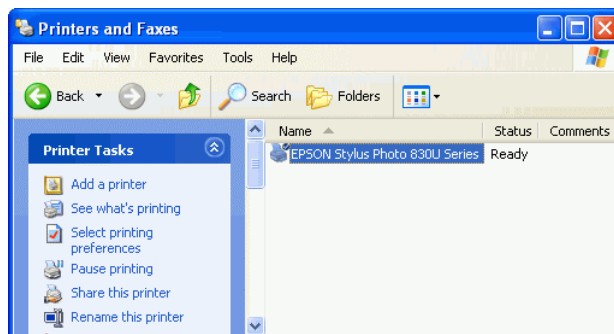
Step 4 :

From **Ports** page, please **unmark** or **disable** bidirectional support.

Step 5:

When installation of new printer driver is complete, the Printers and Faxes screen will look like this.

EPSON Stylus Photo 830U Series is coming out as the new printer which must be connect-

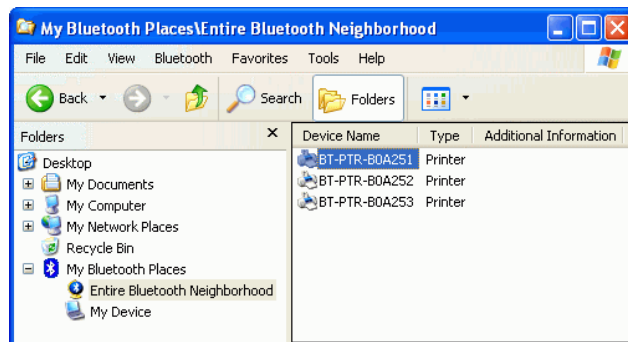


ed to the printer adapter now.

MULTIPLE PRINTER COMBO ADAPTERS

Previous sections talked about how to do a printing job with a printer combo adapter. This section is talking about when multiple adapters are installed in your office, how to configure each adapter before printing. Supposed there are three printer combo adapters connected to two EPSON Stylus C61 and one EPSON Stylus Photo 830U printers separately.

If you power on three printer combo adapters, then from [My Bluetooth Places](#), click the [Entire Bluetooth Neighborhood](#), three adapters will be found. Each of them has a series number, so it is easy to configure printer driver for them.



In the following example, we assume:

- BT-PTR-B0A251 connects to EPSON Stylus C61.
- BT-PTR-B0A252 connects to EPSON Stylus C61.
- BT-PTR-B0A253 connects to EPSON Stylus Photo 830U.

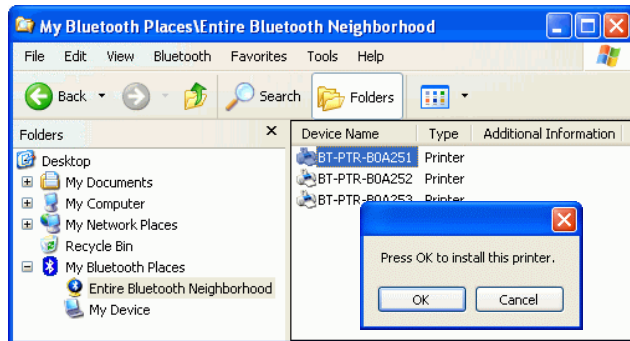


1. Configure the first Printer Adapter

Connect the first printer combo adapter to an EPSON Stylus C61 printer.

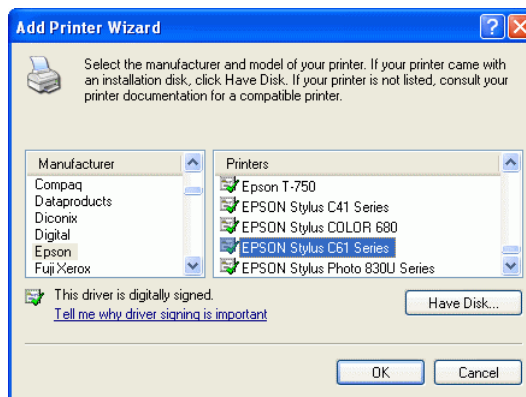
Step 1:

From **MY BLUETOOTH PLACES**, Right click on the first printer combo adapter folder (with series#: BT-PTR-B0A251), then select OK to install a printer driver for it.



Step 2:

Add Printer Wizard will show up, find the brand name and model number of the printer you want this printer adapter to use. It will ask you to install the printer driver if it has not been installed in your system before. If the driver has been installed, Add Printer Wizard will pass very quickly. In this example, we select EPSON Stylus C61 as the printer, supposed its driver was installed before, so just click **OK** to continue.

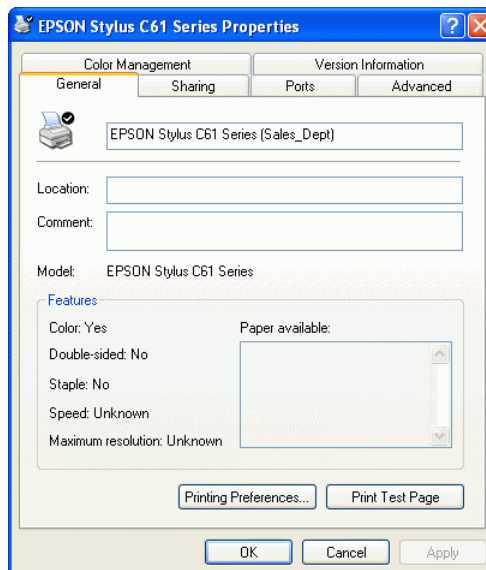


Step 3:

You can assign a name such as **EPSON Stylus C61 (Sales_Dept)** to the first printer combo adapter just selected. At end user side, you will only find a printer named **EPSON Stylus C61 (Sales_Dept)**, you will not see any printer named BT-PTR-B0A251.

Step 4 :

From **Ports** page, please **unmark** or **disable** bidirectional support. Click **OK** to complete the



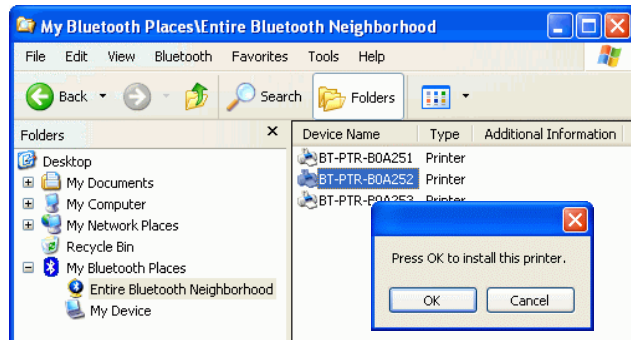
installation.

2. Configure the second Printer Adapter

Connect the second printer combo adapter to another EPSON Stylus C61 printer.

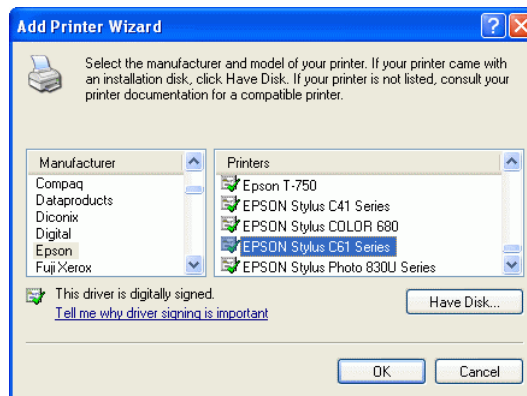
Step 1:

From **MY BLUETOOTH PLACES**, Right click on the second printer combo adapter folder (with series#: BT-PTR-B0A252), then select OK to install a printer driver for it.



Step 2:

Add Printer Wizard will show up, select EPSON Stylus C61 as the printer, because its driver was installed before, so just click OK to continue.

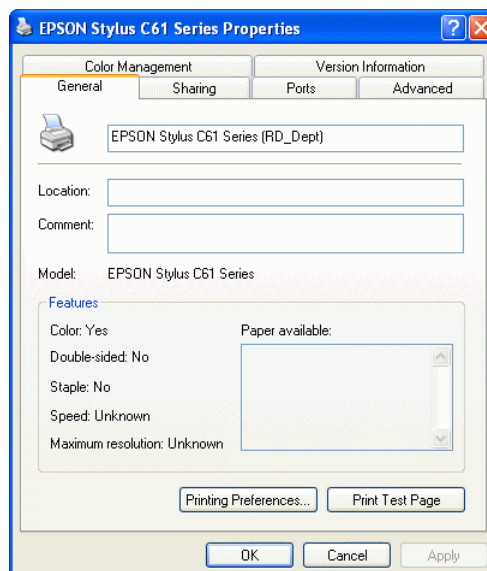


Step 3:

You can assign a name such as **EPSON Stylus C61 (RD_Dept)** to the second printer combo adapter just selected. At end user side, you will only find a printer named **EPSON Stylus C61 (RD_Dept)**, you will not see any printer named BT-PTR-B0A252.

Step 4 :

From **Ports** page, please **unmark** or **disable** bidirectional support.



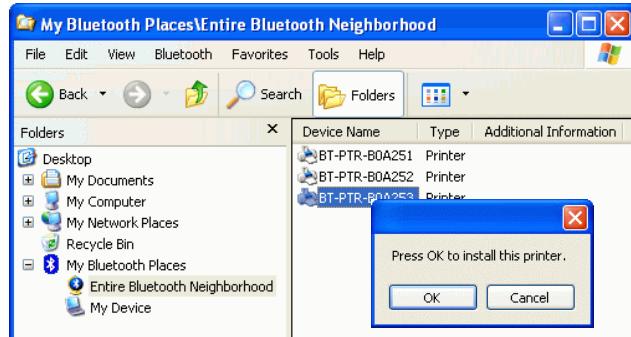
Click **OK** to complete the installation.

3. Configure the third Printer Adapter

Connect the third printer combo adapter to an EPSON Stylus Photo 830U printer.

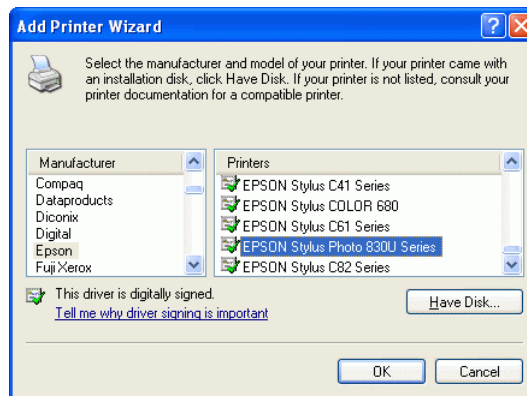
Step 1:

From **MY BLUETOOTH PLACES**, left click on the third printer combo adapter folder (with series#: BT-PTR-B0A253), then select OK to install a printer driver for it.



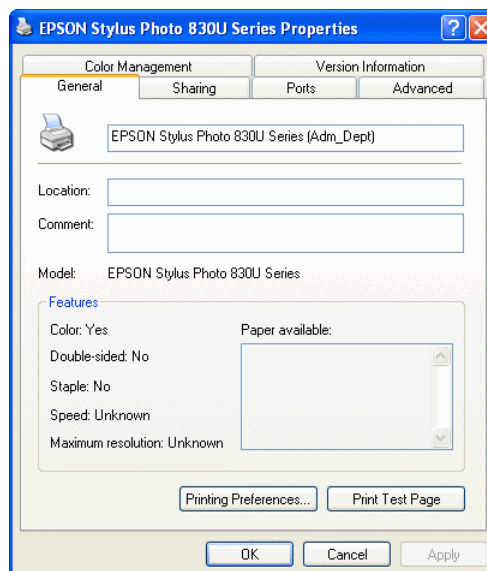
Step 2:

Add Printer Wizard will show up, select **EPSON Stylus Photo 830U** as the printer, supposed its driver has been installed before, so just click **OK** to continue.



Step 3:

You can assign a name such as **EPSON Stylus Photo 830U (Adm_Dept)** to the third printer combo adapter just selected. At end user side, you will only find a printer named **EPSON Stylus Photo 830U (Adm_Dept)**, you will not see any printer named BT-PTR-B0A253.

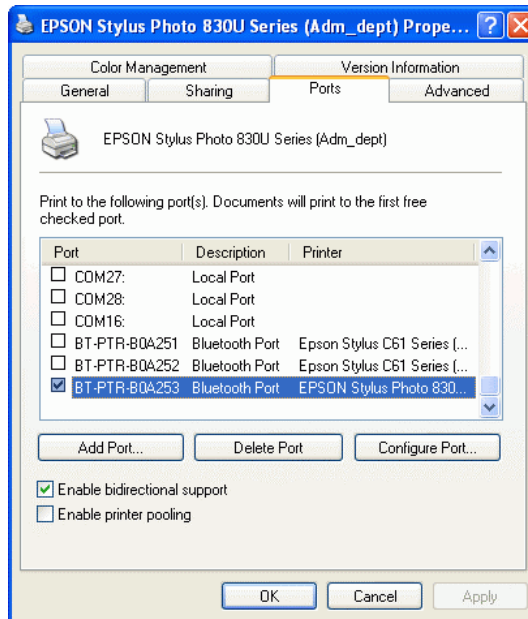


Step 4 :

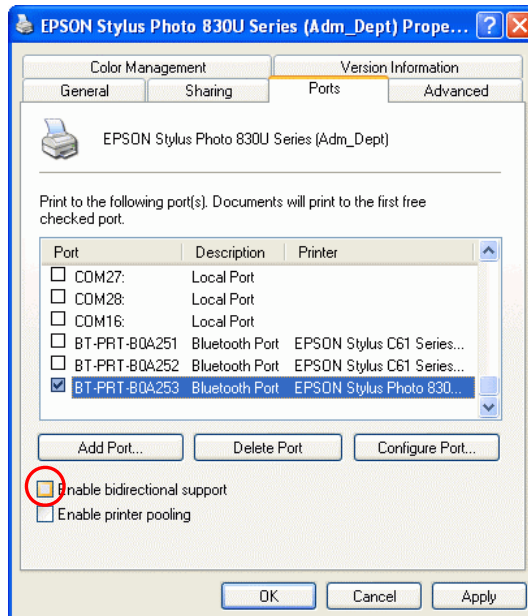
From **Ports** page, you can see three printer ports are used :

1. BT-PTR-B0A351.
2. BT-PTR-B0A352.
3. BT-PTR-B0A353.

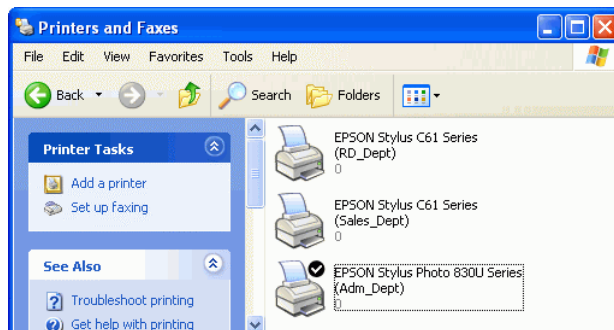
They are functioning the same as the original LPT1: printer port of your PC. The difference is LPT1: is for cable connection, while these three Bluetooth printer ports are used for wireless connections.



From **Ports** page, please **unmark** or **disable** bidirectional support.



Click **My Computer** icon on the desktop screen, select **Control Panel**, select **Printers and Faxes**, then you can find three Bluetooth Printers are there:



1. EPSON Stylus C61 (Sales_Dept).
2. EPSON Stylus C61 (RD_Dept).
3. EPSON Stylus Photo 830U (Adm_Dept).

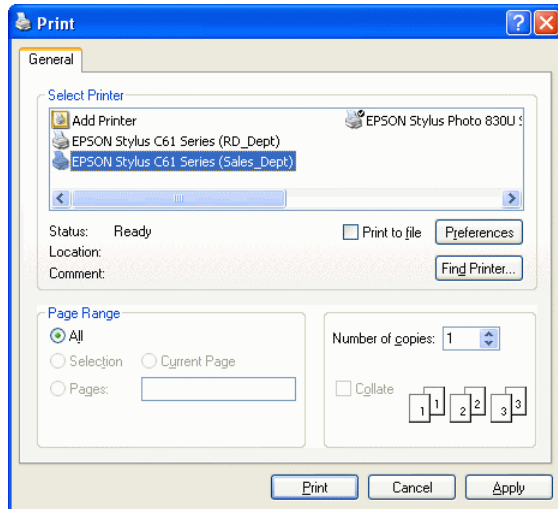
If you want to print by using these printers, please refer to next page.

Start Printing:

Print a file by using combo printer adapter is quite straightforward, it is just like the normal way you are printing a file.

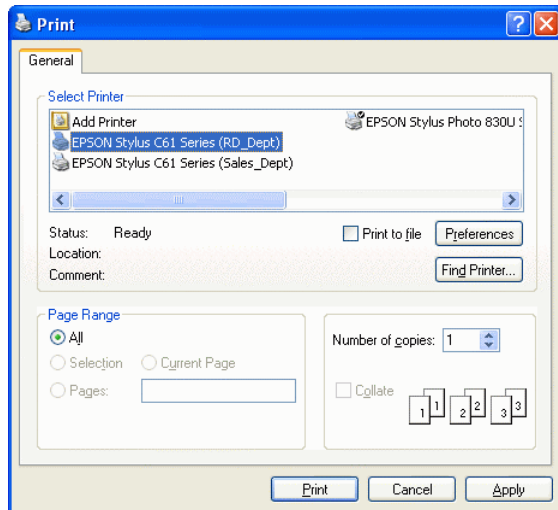
For EPSON Stylus C61 (Sales_Dept):

When page range and number of copies screen prompts, select EPSON Stylus C61 (Sales_Dept) printer, then click OK.



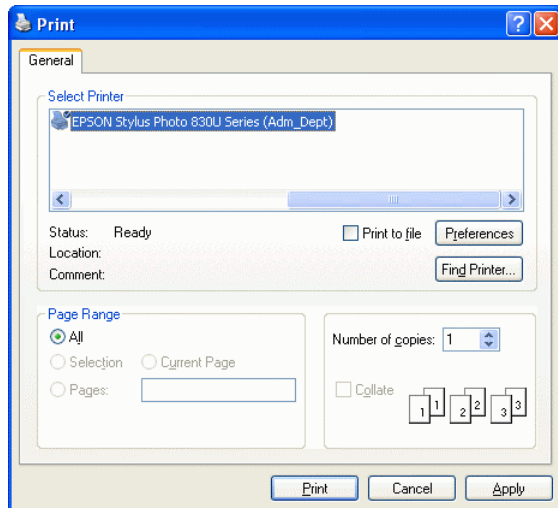
For EPSON Stylus C61 (RD_Dept):

When page range and number of copies screen prompts, select EPSON Stylus C61 (RD_Dept) printer, then click OK.



For EPSON Stylus Photo 830U (Adm_Dept):

When page range and number of copies screen prompts, select EPSON Stylus Photo 830U (Adm_Dept) printer, then click OK.



Change Printer:

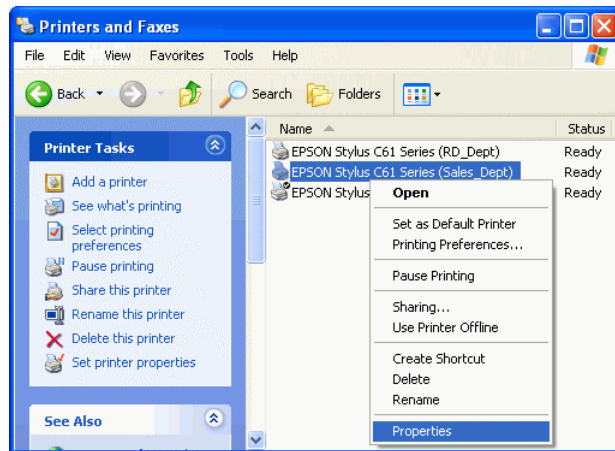
Step 1:

Select Control Panel.

Select Printers and Faxes.

Right click on printer EPSON Stylus C61 Series (Sales_Dept) icon.

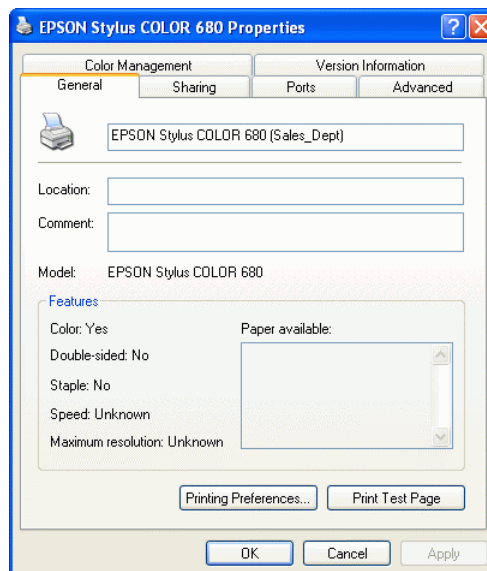
Click on Properties.



Step 2:

You can change printer name to such as:

EPSON Stylus COLOR 680 (Sales_Dept).

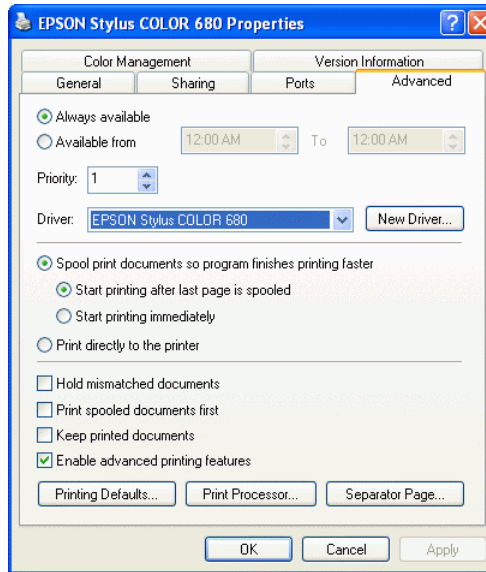


Step 3:

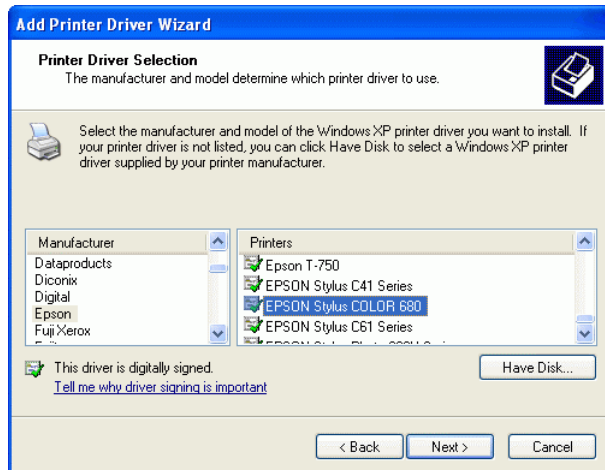
Click on **Advanced** tab to see if the driver of EPSON Stylus COLOR 680 has been installed before.

If yes, click **OK** to complete the change.

If not, click **New Driver** and follow the instructions to install it.



If **New Driver** is selected, this screen will prompt to instruct you to install new driver step by step.

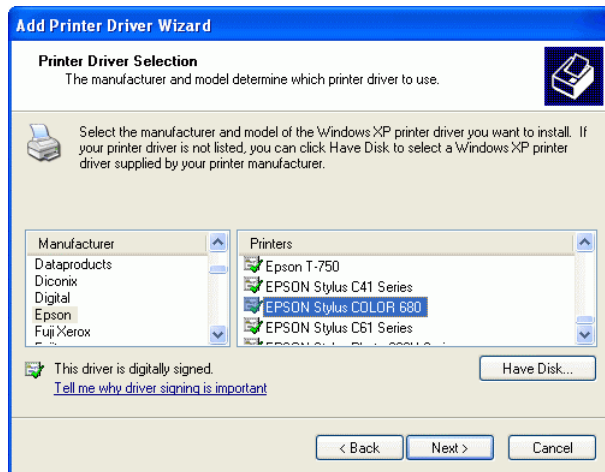


Step 4:

When installation of new printer driver is complete, the Printers and Faxes screen will look like this.

EPSON Stylus COLOR 680 (Sales_Dept)

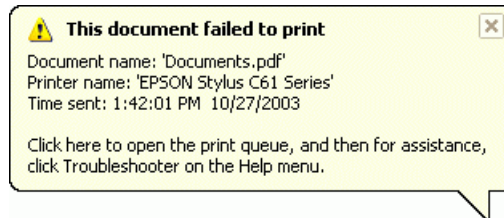
is coming out as the new printer.



PRINTER ERROR MESSAGE

There are some conditions which will stop the printing process:

1. Inks 100% run out.
2. Paper Jam.
3. Printer is BUSY.
4. Printer is not turned on.

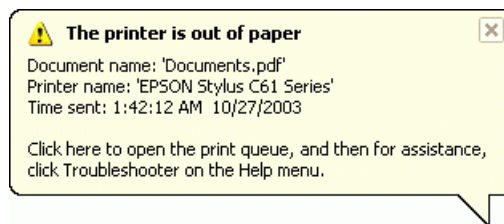


When the above conditions occurred, PC will pop out a failed to print message on the screen one minute later. User can clean the problem and continue the printing after.

- INKs run out - Replace new INKs for your printer.
- Paper Jam - Remove jamed paper.
- Printer BUSY - Check if there is any error in feeding paper to the printer. Some printers may have problem in feeding paper. The symptom looks like Paper Empty. You can push a button on printer to let it retry. Read the printer manuals to know how to do it. If it is impossible to continue, then you have to cancel the printer job.

5. Paper empty.

If it is out of paper, this screen will pop out.

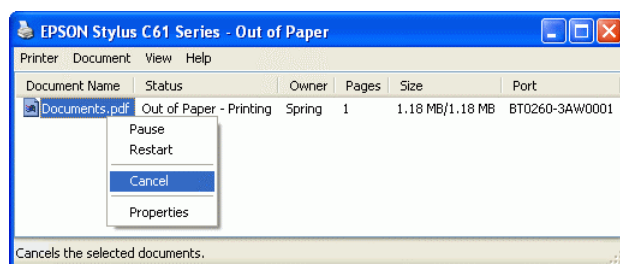


Printer Combo Adapter will continue the printing if the error condition is cleaned. It will not stop unless you cancel it.

Example:

Cancel an out of paper job.

You can read the following paragraphs to know how to cancel a printing job, or how to reset a Bluetooth operation.




CANCEL PRINTING JOB

1. Start



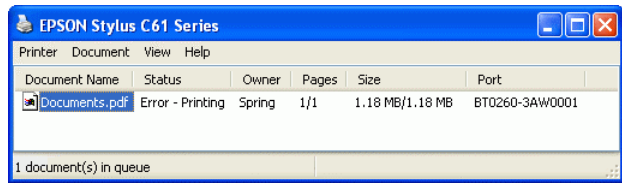
2. Printing job in process.



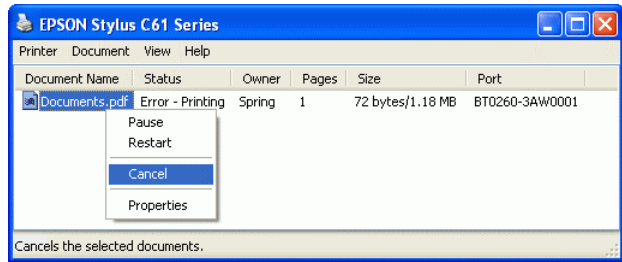
3. Printing job has error. Double click on printer icon  to read the message.



4. Error message.



5. Right click on the file being printed, and select **Cancel** to stop it.



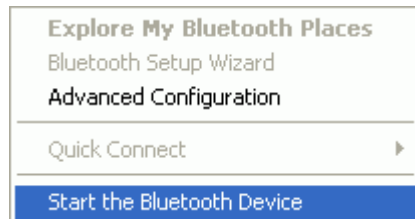
RESET HANGED BLUETOOTH

If there is any Bluetooth operation hanged, you can use the following steps to clean it.

Right click on green Bluetooth icon on lower-right corner of your screen.
Select **Stop the Bluetooth Device**.



Right click on red Bluetooth icon on lower-right corner of your screen.
Select **Start the Bluetooth Device**.



Bluetooth is reset to normal condition.



APPENDIX A

Specifications:

Product Name	Bluetooth Printer Combo Adapter
Model Name	BT-0260-V2
Certification	FCC, CE, BQB
Standard	Bluetooth v2.0+EDR
Frequency Band	2.4~2.4835GHz unlicensed ISM band
Modulation Method	GFSK, $\pi/4$ -DPSK, 8DPSK
Spread Spectrum	FHSS (Frequency Hopping Spread Spectrum)
Services supported	SPP and HCRP print services
Transfer rates (Max)	3 Mbps Asymmetrical
RF Output	Class 1 (15 dBm)
Working distance	Greater than 100m in free space
Sensitivity	<-88dBm at < 0.1% BER
Power consumption	Normal Mode: 230 mA
	Standby Mode: 140 mA
Input power	5VDC
I/O Interface	USB, IEEE-1284
LED indicator	Power / Bluetooth active /Printing active
Environment	Operation temperature: 0 °C ~ + 60 °C
	Storage temperature: -10 °C ~ +70 °C
	Humidity: 5 ~ 90% non-condensing
Size	70 (L) x 61(W) x 16 (H) mm

APPENDIX B

- Safety Guide:
- Read and follow all instructions and warnings provided.
- Save these instructions for future use.
- When service or replacement of parts is required, ensure work is done by a qualified technician.
- Do not use this unit near water or in a rainy/moist environment.
- Use supplied cables only.
- Do not attempt to service this product yourself. Doing so will expose you to various hazards including dangerous voltage.
- This unit is suitable for a 110V to 230V AC power supply (Auto detect).
- Disconnect the power cable (pull plug) and USB cable in the following situations:
 - In the event of service
 - Power cable/plug becomes damaged.
 - Unit is exposed to excess moisture/rain
 - Unit has been dropped.
 - Unit is being cleaned.
- Unit must be used with adult supervision at all times. Children must not be allowed to handle any of the cables.
- Never insert any objects other than CDs in the trays.
- Never insert any objects through ventilation holes.

Remember!

Any electrical equipment is hazardous if handled improperly.

INFORMATION TO USER

Federal Communication Commission Interference Statement

This equipment has been tested and found to comply with the limits for a class B digital device, pursuant to part 15 of the FCC Rules. These limits are designed to provide reasonable protection against harmful interference in a residential installation.

This equipment generates, uses and can radiate radio frequency energy and, if not installed and used in accordance with the instructions, may cause harmful interference to radio communications. However, there is no guarantee that interference will not occur in a particular installation. If this equipment does cause harmful interference to radio or television reception, which can be determined by turning the equipment off and on, the user is encouraged to try to correct the interference by one or more of the following measures:

- Reorient or relocate the receiving antenna.
- Increase the separation between the equipment and receiver.
- Connect the equipment into an outlet on a circuit different from that to which the receiver is connected.
- Consult the dealer or an experienced radio/TV technician for help.

Installation and use of this Bluetooth Printer Combo Adapter must be in strict accordance with the instructions included in the user documentation provided with the product. Any changes or modifications (including the antennas) made to this device that are not expressly approved by the manufacturer may void the user's authority to operate the equipment. The manufacturer is not responsible for any radio or television interference caused by unauthorized modification of this device, or the substitution of the connecting cables and equipment other than manufacturer specified. It is the responsibility of the user to correct any interference caused by such unauthorized modification, substitution or attachment. Manufacturer and its authorized resellers or distributors will assume no liability for any damage or violation of government regulations arising from failing to comply with these guidelines.

FCC RF Radiation Exposure Statement

This equipment complies with FCC RF radiation exposure limits set forth for an uncontrolled environment. End users must follow the specific operating instructions for satisfying RF exposure compliance.

This device and its antenna must not be co-located or operating in conjunction with any other antenna or transmitter.

Your device contains a low power transmitter. When device is transmitted it sends out Radio Frequency (RF) signal. Use only with supplied antenna. Unauthorized antenna, modification, or attachments could damage the transmitter and may

violate FCC regulations. This equipment complies with FCC radiation exposure limits set forth for an uncontrolled environment. This equipment should be installed and operated with minimum distance 20cm between the radiator & your body.

The users manual or instruction manual for an intentional or unintentional radiator shall caution the user that changes or modifications not expressly approved by the party responsible for compliance could void the user's authority to operate the equipment.

REGULATORY INFORMATION

Bluetooth 2.0+EDR USB Adapter must be installed and used in strict accordance with the manufacturer's instructions. This device complies with the following radio frequency and safety standards.

This device complies with Part 15 of the FCC Rules.
Operation is subject to the following two conditions:
(1) This device may not cause harmful interference.
(2) This device must accept any interference received, including interference that may cause undesired operation.

Europe- R&TTE Compliance Statement

This equipment complies with all the requirements of DIRECTIVE 1999/5/CE OF THE EUROPEAN PARLIAMENT AND THE COUNCIL of March 9, 1999 on radio equipment and telecommunication terminal Equipment and the mutual recognition of their conformity (R&TTE)

CE Declaration of Conformity

For the following equipment:

Bluetooth Printer Combo Adapter

(Product Name)

BT-0260-V2

(Model Designation)

is herewith confirmed to comply with the requirements set out in the Council (European parliament) Directive on the Approximation of the Laws of the Member States relating to Electromagnetic Compatibility of Radio and Telecom device (1999/5/EC). For the evaluation regarding this Directive, the following standards were applied:

EN 300 328 V1.6.1 (2004-11)

EN 301 489-1 V1.5.1 (2004-11), EN 301 489-17 V1.2.1 (2002-08)

EN 60950-1: 2001

EN 50371:2002

One Year Limited Warranty

- This device is guaranteed against manufacturing defects for one full year from the original date of purchase.
- This warranty is valid at the time of purchase and is non-transferable.
- This warranty must be presented to the service facility before any repair can be made.
- Sales slip or other authentic evidence is required to validate warranty.
- Damage caused by accident, misuse, abuse, improper storage, and/or un-certified repairs is not covered by this warranty.
- All mail or transportation costs including insurance are at the expense of the owner.
- Do not send any product to service center for warranty without a RMA (Return Merchandise Authorization) and proof of purchase. Ensure a trackable method of delivery is used (keep tracking number).
- Warranty is valid only in the country of purchase.
- We assume no liability that may result directly or indirectly from the use or misuse of these products.

IMPORTANT

"This warranty will be voided if the device is tampered with, improperly serviced, or the security seals are broken or removed"