

BT-505

Bluetooth 5.0 Dual-mode Dongle

Manual+Product Specifications

Version: 1.0

8F, No. 150, Jian Yi Road, Zhonghe District, New Taipei City, Taiwan 235, R.O.C.v 1.0
Tel: 886-2-8226-5088 Fax: 886-2-8226-5077

Revision History

Version	Date	Change Description
1.0	11/01, 2019	Initial release

The BT-505 is a dual-mode(BR/EDR + Low Energy) USB Adapter and using Realtek RTL8761BUV chip complies with Bluetooth 5. It combines a BT Protocol Stack for LM, LL, L2CAP, GATT, RFCOMM, SPP and LE.

The BT-505 is compatible with previous versions, including v2.1 + LE. For BR/EDR, it allows multiple active links in either slave mode or master mode. For Low Energy, it supports multiple states and allows multiple active links in slave mode. A BR/EDR link and an LE link can be active at the same time.

FEATURES

- Bluetooth 5 specification compliant
- Supports Bluetooth classic (BR/EDR)
- Supports Bluetooth Low Energy (BLE)
- Single-end RF radio output with high performance up to 10dBm
- Supports Power Control
- Fast AGC control to improve receiving dynamic range



SPECIFICATIONS

Model Name	BT-505
Product Name	Bluetooth 5.0 Dual-mode Dongle
Standard	Bluetooth 5 dual mode
Frequency Band	2.4~2.4835GHz unlicensed ISM band
Spread Spectrum	FHSS (Frequency Hopping Spread Spectrum)
Transfer Rates	2Mbps data rate
RF Output Power	Up to +10 dBm
Sensitivity	TBD
Input power	DC 5V (via USB Port)
I/O Interface	USB
LED Indicator	Configurable
OS Support	Linux
Environment	Operation temperature: 0 ~ + 60 degree
Environment Size	Storage temperature: -20 ~ +70 degree
	Humidity: 5 ~ 90% non-condensing
	22.3 x 15 x 8 mm (L x W x H)

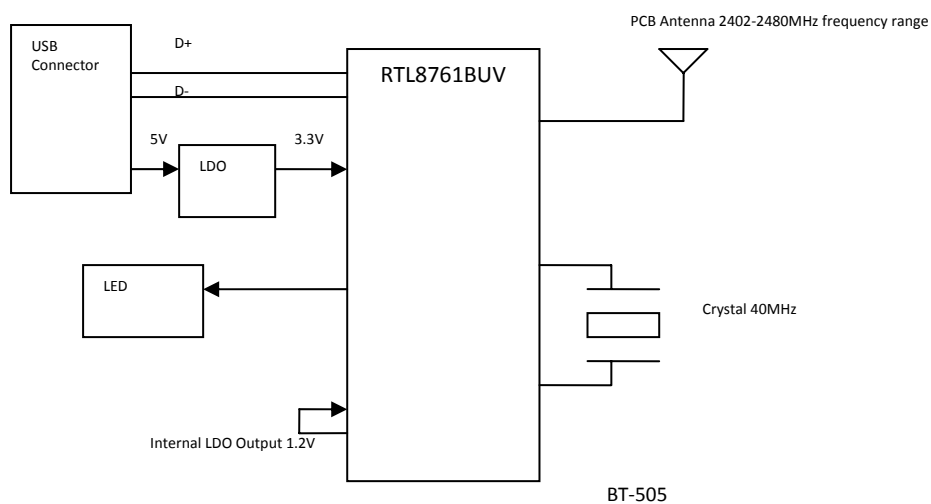
CC&C

TECHNOLOGIES

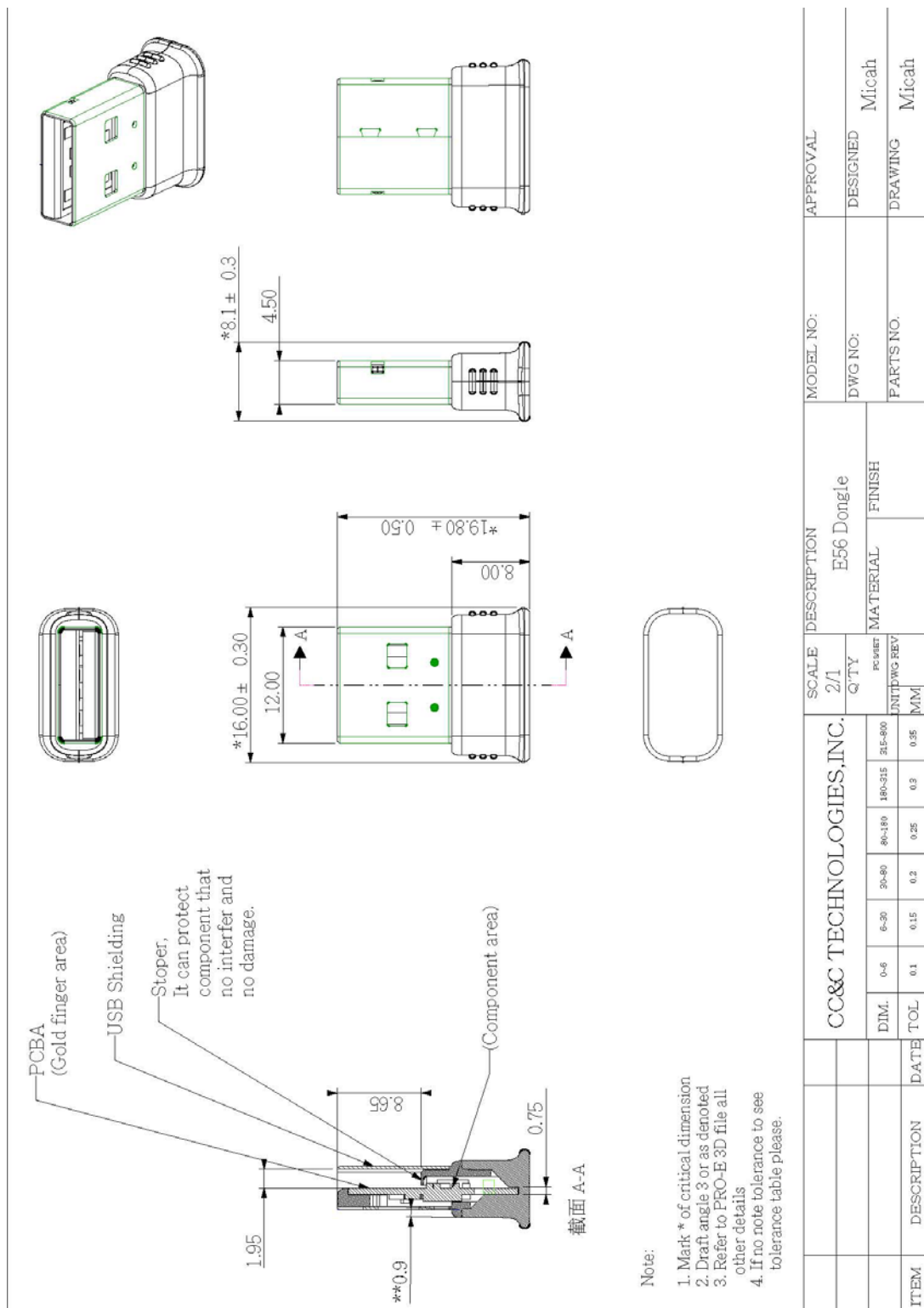
8F, No. 150, Jian Yi Road,
 Zhonghe District,
 New Taipei City,
 Taiwan 235, R.O.C.
 Tel : 886-2-8226 5088
 Fax : 886-2-8226 5077
 marketing@ccandc.com.tw

Specifications are subject to change without notice

Block Diagram



Dimension



Subject to change without notice

8F, No. 150, Jian Yi Road, Zhonghe District, New Taipei City, Taiwan 235, R.O.C.v 1.0
Tel: 886-2-8226-5088 Fax: 886-2-8226-5077

This device complies with Part 15 of the FCC Rules. Operation is subject to the following two conditions: (1) This device may not cause harmful interference, and (2) This device must accept any interference received, including interference that may cause undesired operation

This equipment has been tested and found to comply with the limits for a Class B digital device, pursuant to part 15 of the FCC Rules. These limits are designed to provide reasonable protection against harmful interference in a residential installation. This equipment generates, uses and can radiate radio frequency energy and, if not installed and used in accordance with the instructions, may cause harmful interference to radio communications. However, there is no guarantee that interference will not occur in a particular installation. If this equipment does cause harmful interference to radio or television reception, which can be determined by turning the equipment off and on, the user is encouraged to try to correct the interference by one or more of the following measures:

- Reorient or relocate the receiving antenna.
- Increase the separation between the equipment and receiver.
- Connect the equipment into an outlet on a circuit different from that to which the receiver is connected.
- Consult the dealer or an experienced radio/TV technician for help.

To assure continued compliance, any changes or modifications not expressly approved by the party responsible for compliance could void the user's authority to operate this equipment. (Example- use only shielded interface cables when connecting to computer or peripheral devices).

This equipment complies with FCC RF radiation exposure limits set forth for an uncontrolled environment.

This transmitter must not be co-located or operating in conjunction with any other antenna or transmitter.

