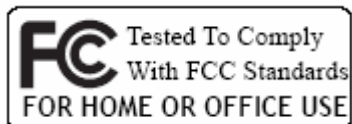


# Quick Installation Guide

## WA-7310



© All rights reserved.

All trade names are registered trademarks of respective manufacturers listed.

This manual may not be copied in any media or form without the written consent of original maker.

## Quick Installation Guide of WLAN Broadband Router

※ To avoid users without access right through your WLAN Broadband Router, suggest that use security mechanism like WEP, WPA or set ID/password for web configuration login IP address 192.168.1.254.

### Preparation

- 1 At least one PC with IEEE802.11b/g/n WLAN client installed.
- 2 One straight-through Category Ethernet cable, used to link WAN interface to xDSL or CM for Internet connection.
- 3 WLAN Broadband Router.

Check package contents:

- ✓ WLAN Broadband Router
- ✓ DC Power Adapter
- ✓ User's manual
- ✓ RJ-45 Cable Line (Option)

Collect Installation Information:

WAN configuration (Contact your ISP or network administrator for these information)

**DHCP Client**

**Static IP**

<b>IP Address</b>	<input type="text"/> . <input type="text"/> . <input type="text"/> . <input type="text"/>
<b>Subnet Mask</b>	<input type="text"/> . <input type="text"/> . <input type="text"/> . <input type="text"/>
<b>Default Gateway</b>	<input type="text"/> . <input type="text"/> . <input type="text"/> . <input type="text"/>
<b>DNS Address</b>	<input type="text"/> . <input type="text"/> . <input type="text"/> . <input type="text"/>

**PPPoE**

<b>User Name</b>	<input type="text"/>
<b>Password</b>	<input type="text"/>

**PPTP**

<b>IP Address</b>	<input type="text"/> . <input type="text"/> . <input type="text"/> . <input type="text"/>
<b>Subnet Mask</b>	<input type="text"/> . <input type="text"/> . <input type="text"/> . <input type="text"/>
<b>Server IP Address</b>	<input type="text"/> . <input type="text"/> . <input type="text"/> . <input type="text"/>
<b>User Name</b>	<input type="text"/>
<b>Password</b>	<input type="text"/>

## Quick Installation Guide of WLAN Broadband Router

○ **L2TP**

<b>IP Address</b>	□□□□ . □□□□ . □□□□ . □□□□
<b>Subnet Mask</b>	□□□□ . □□□□ . □□□□ . □□□□
<b>Server IP Address</b>	□□□□ . □□□□ . □□□□ . □□□□
<b>User Name</b>	
<b>Password</b>	

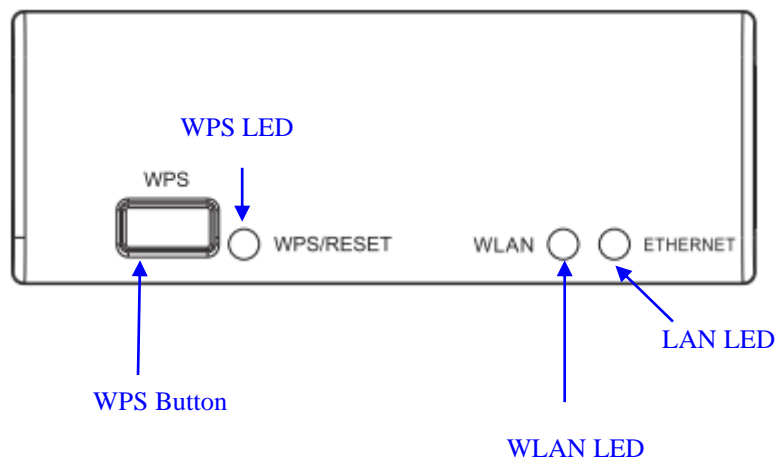
LAN configuration

<b>IP Address</b>	□□□□ . □□□□ . □□□□ . □□□□
<b>Subnet Mask</b>	□□□□ . □□□□ . □□□□ . □□□□

WLAN configuration

<b>SSID</b>	
<b>Mode</b>	
<b>Channel Number</b>	

LED Panel Description

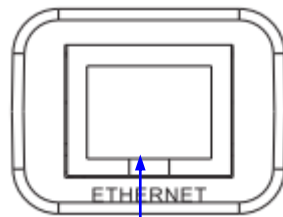


LED Indicator	State	Description
WLAN LED	Flashing	WLAN is active
	Off	WLAN is off
WPS LED	Flashing	The WPS feature is Enabled.
	Off	The WPS feature is Disabled.
LAN LED	.	.

## Quick Installation Guide of WLAN Broadband Router

ACT	Flashing	Data is transmitting or receiving on the LAN interface
	On	Port linked.
	Off	No link.
WPS		Push continually the reset button 5 ~ 10 seconds to enable the WPS feature.

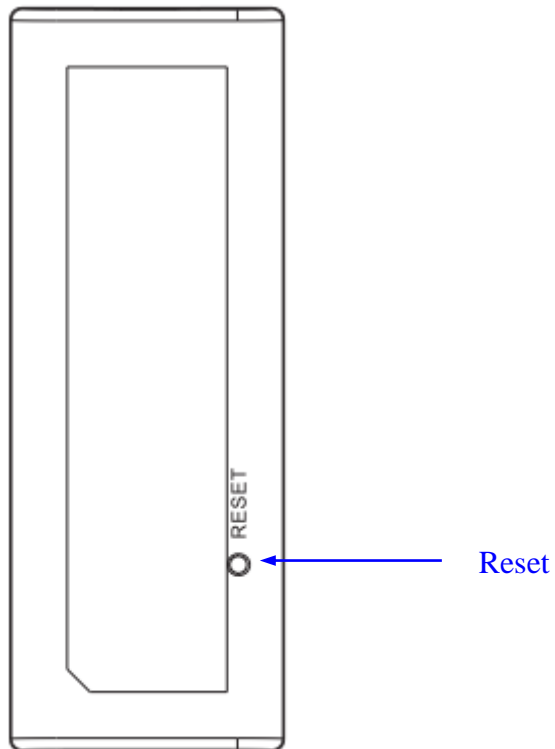
### Back Panel Description



LAN

## Quick Installation Guide of WLAN Broadband Router

---



<b>Interfaces</b>	<b>Description</b>
LAN	The RJ-45 sockets allow LAN connection through Category 5 cables. Support auto-sensing on 10/100M speed and half/ full duplex; comply with IEEE 802.3/ 802.3u respectively.
RS (Reset)	Push continually the reset button 5 ~ 10 seconds to reset the configuration parameters to factory defaults.

# Quick Installation Guide of WLAN Broadband Router

## Installation

### Step One – Power On WLAN Broadband Router

Connect DC Power Adapter to WLAN Broadband Router and the wall power socket.

**Notice: It will take about 50 seconds to complete the boot up sequence after powered on the WLAN Broadband Router; Power LED will be active, and after that the WLAN Activity LED will be flashing to show the WLAN interface is enabled and working now.**

### Step Two – Configure WLAN Broadband Router

1. Connect your PC to LAN port for configuration setting. WLAN Broadband Router is delivered with the following factory default parameters on the Ethernet LAN interfaces.

System	
Uptime	0day:23h:4m:16s
Firmware Version	GW2x2-N01-3463.00
Build Time	Fri Dec 26 17:48:03 CST 2014

Wireless Configuration	
Mode	AP
Band	2.4 GHz (B+G+N)
SSID	MyWLAN
Channel Number	11
Encryption	Disabled
BSSID	5c:E3:70:0c:df:3d
Associated Clients	2

TCP/IP Configuration	
Attain IP Protocol	Fixed IP
IP Address	192.168.1.254
Subnet Mask	255.255.255.0
Default Gateway	192.168.1.254
DHCP Server	Enabled
MAC Address	5c:E3:70:0c:df:3d

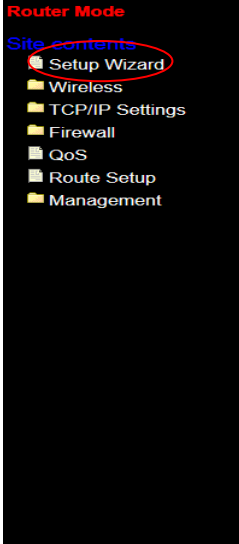
WAN Configuration	
Attain IP Protocol	Getting IP from DHCP server...
IP Address	0.0.0.0
Subnet Mask	0.0.0.0
Default Gateway	0.0.0.0
MAC Address	5c:E3:70:0c:df:3c

- Default IP Address: **192.168.1.254**
- Default IP subnet mask: **255.255.255.0**
- WEB login User Name: *<empty>*
- WEB login Password: *<empty>*
- Configure your PC with IP address between 192.168.1.1 to 192.168.1.253 and subnet mask to be 255.255.255.0, then open an Internet browser (i.e. Microsoft IE6.1 SP1 or above) to connect WLAN Broadband Router by entering <http://192.168.1.254> to URL field.

The following example is to configure router as “Gateway” mode that use factory default value. You may change those values if you think that is necessary.

# Quick Installation Guide of WLAN Broadband Router

2. Click “Setup Wizard” in submenu of Site contents



## Access Point Status

This page shows the current status and some basic settings of the device.

System	
Uptime	0day:23h:4m:16s
Firmware Version	GW2x2-N01-3463.00
Build Time	Fri Dec 26 17:48:03 CST 2014
Wireless Configuration	
Mode	AP
Band	2.4 GHz (B+G+N)
SSID	MyWLAN
Channel Number	11
Encryption	Disabled
BSSID	5c:f3:70:0c:df:3d
Associated Clients	2
TCP/IP Configuration	
Attain IP Protocol	Fixed IP
IP Address	192.168.1.254
Subnet Mask	255.255.255.0
Default Gateway	192.168.1.254
DHCP Server	Enabled
MAC Address	5c:f3:70:0c:df:3d
WAN Configuration	
Attain IP Protocol	Getting IP from DHCP server...
IP Address	0.0.0.0
Subnet Mask	0.0.0.0
Default Gateway	0.0.0.0
MAC Address	5c:f3:70:0c:df:3c

■ Click “Next>>” button to go next.

# Quick Installation Guide of WLAN Broadband Router

## 3. Configure Time Zone Setting configuration

**2. Time Zone Setting**

You can maintain the system time by synchronizing with a public time server over the Internet.

Enable NTP client update

Automatically Adjust Daylight Saving

Time Zone Select : (GMT+08:00)Taipei

NTP server : 192.5.41.41 - North America

Cancel <<Back Next>>

- Click “Next>>” button to go next.

## 4. Configure LAN Interface Setup

**3. LAN Interface Setup**

This page is used to configure the parameters for local area network which connects to the LAN port of your Access Point. Here you may change the setting for IP address, subnet mask, DHCP, etc..

IP Address: 192.168.1.254

Subnet Mask: 255.255.255.0

Cancel <<Back Next>>

- IP Address:  
192.168.1.254.
- Subnet Mask:  
255.255.255.0.
- Click “Next>>” button to go next.

## 5. WAN Interface Setup

**4. WAN Interface Setup**

This page is used to configure the parameters for Internet network which connects to the WAN port of your Access Point. Here you may change the access method to static IP, DHCP, PPPoE or PPTP by click the item value of WAN Access type.

WAN Access Type: DHCP Client

Cancel <<Back Next>>

- WAN Access Type: Select WAN connection of ISP provides.
- ◇ WAN Options:  
Static IP, DHCP Client, PPPoE, PPTP, L2TP
- Click “Next>>” button to go next.

6.



# Quick Installation Guide of WLAN Broadband Router

## 6. Wireless Basic Settings

**5. Wireless Basic Settings**

This page is used to configure the parameters for wireless LAN clients which may connect to your Access Point.

---

Band: 2.4 GHz (B+G+N)

Mode: AP

Network Type: Infrastructure

SSID: MyWLAN

Channel Width: 40MHz

ControlSideband: Upper

Channel Number: 11

Enable Mac Clone (Single Ethernet Client)

- Band: 2.4GHz(B+G)
- Mode: AP
- Network Type: disabled
- SSID: MyWLAN
- Channel: 11
- Enable Mac Clone: disabled
- Click “Next>>” button to go next.

## 7. Wireless Security Setup

**6. Wireless Security Setup**

This page allows you setup the wireless security. Turn on WEP or WPA by using Encryption Keys could prevent any unauthorized access to your wireless network.

---

Encryption: WEP

Key Length: 64-bit

Key Format: Hex (10 characters)

Key Setting: \*\*\*\*\*

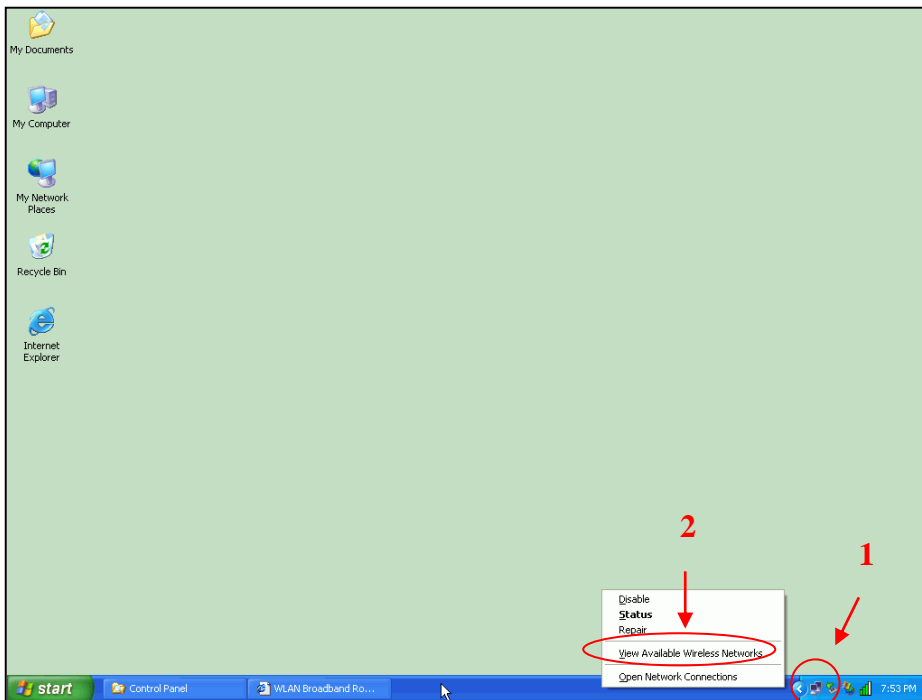
- Encryption: None
- ◇ Options:
  - WEP, WPA (TKIP), WPA2 (AES), WPA2 Mixed
- Click “Finished” button to close setup session.

# Quick Installation Guide of WLAN Broadband Router

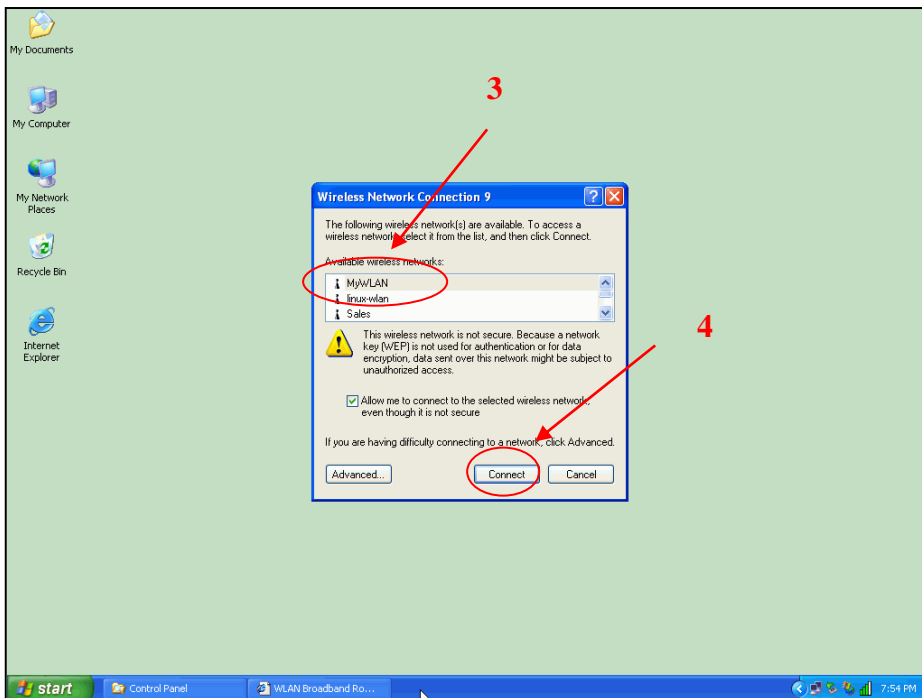
## Step Three – Connect WLAN client to WLAN Broadband Router wirelessly

On your wireless client PC:

1. Move your mouse to the Network icon on the Task bar and right click the mouse button to bring up the pop-up menu.
2. Click the View Available Wireless Networks on the pop-up menu.

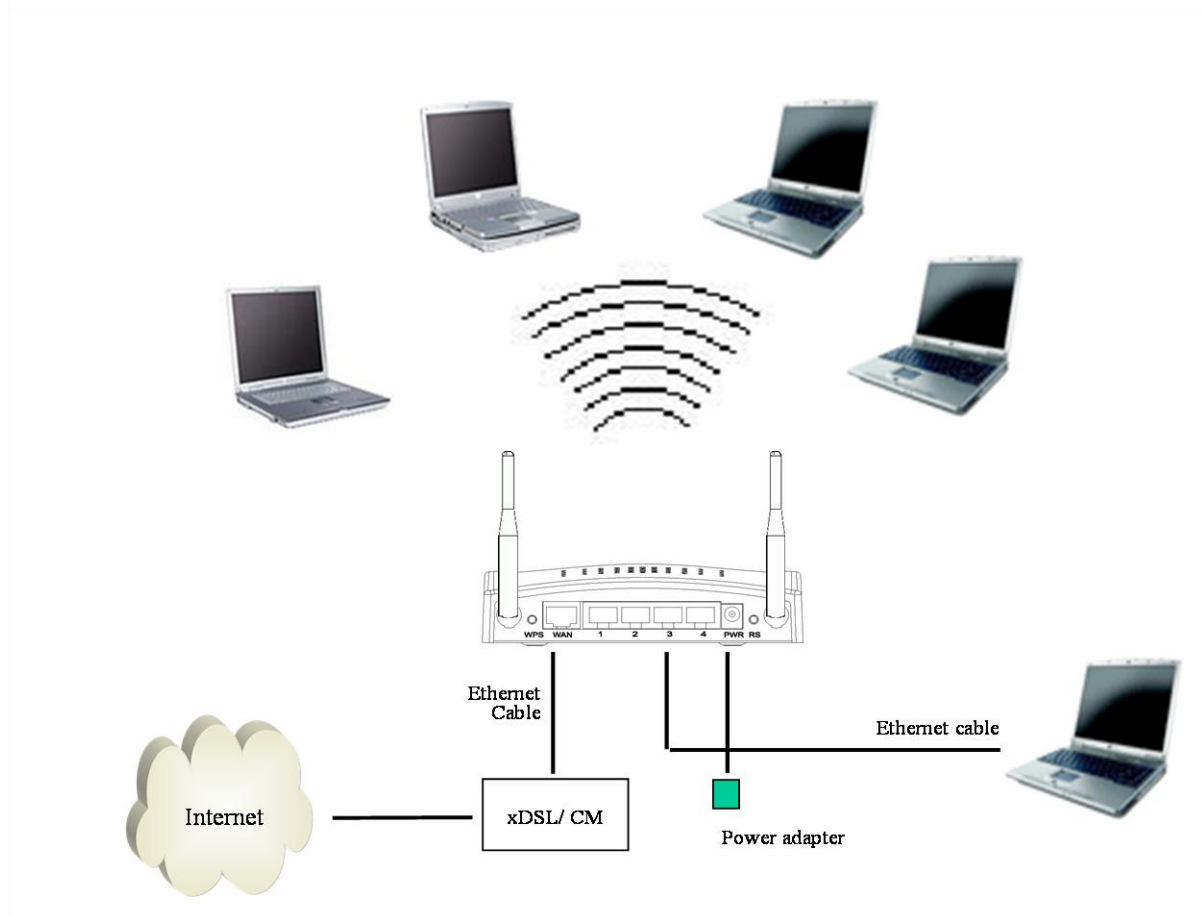


3. Select the specific WLAN network (SSID) from the Available Networks list.



4. Click the Connect button to establish the communication link to the wireless network

## Quick Installation Guide of WLAN Broadband Router



The wireless network diagram of WLAN Broadband Router..

### *Reference*

Please consult the user's manual of WLAN Broadband Router for detailed and complete operation guide.

## Statement

This equipment has been tested and found to comply with the limits for a Class B digital device, pursuant to Part 15 of the FCC Rules. These limits are designed to provide reasonable protection against harmful interference in a residential installation. This equipment generates, uses and can radiate radio frequency energy and, if not installed and used in accordance with the instructions, may cause harmful interference to radio communications. However, there is no guarantee that interference will not occur in a particular installation. If this equipment does cause harmful interference to radio or television reception, which can be determined by turning the equipment off and on, the user is encouraged to try to correct the interference by one of the following measures:

- Reorient or relocate the receiving antenna.
- Increase the separation between the equipment and receiver.
- Connect the equipment into an outlet on a circuit different from that to which the receiver is connected.
- Consult the dealer or an experienced radio/TV technician for help.

FCC Caution: Any changes or modifications not expressly approved by the party responsible for compliance could void the user's authority to operate this equipment.

This device complies with Part 15 of the FCC Rules. Operation is subject to the following two conditions: (1) This device may not cause harmful interference, and (2) this device must accept any interference received, including interference that may cause undesired operation.

### **Federal Communication Commission (FCC) Radiation Exposure Statement**

This EUT is compliance with SAR for general population/uncontrolled exposure limits in ANSI/IEEE C95.1-1999 and had been tested in accordance with the measurement methods and procedures specified in OET Bulletin 65 Supplement C.