

User Manual

11Mbps Wireless LAN PC Card

Version 1.1- September 2000

Table of contents

	Information User.....	2
1	Introduction.....	3
2	WL-1100 installation.....	4
	2.1 Hardware installation.....	4
	2.2 WL-1100 Wireless LAN PC Card Windows 98 installation.....	4
3	Technical Specifications WL-1100 Wireless LAN PC Card.....	17

INFORMATION TO USER

FCC INFORMATION

The Federal Communication Commission Radio Frequency Interference Statement includes the following paragraph:

The equipment has been tested and found to comply with the limits for a Class B Digital Device, pursuant to part 15 of the FCC Rules. These limits are designed to provide reasonable protection against harmful interference in a residential installation. This equipment generates, uses and can radiate radio frequency energy and, if not installed and used in accordance with the instruction, may cause harmful interference to radio communication. However, there is no grantee that interference will not occur in a particular installation. If this equipment does cause harmful interference to radio or television reception, which can be determined by turning the equipment off and on, the user is encouraged to try to correct the interference by one or more of the following measures:

- Reorient or relocate the receiving antenna.
- Increase the separation between the equipment and receiver.
- Connect the equipment into an outlet on a circuit different from that to which the receiver is connected.
- Consult the dealer or an experienced radio/TX technician for help.

The user should not modify or change this equipment without written approval from CC&C Technologies, Inc. Modification could void authority to use this equipment.

Notice: The changes or modifications not expressly approved by the party responsible for compliance could void the user's authority to operate the equipment.

Useful information

TEL: 886-2-8226-5088

FAX: 886-2-8226-5077

E-Mail: marketing@ccandc.com.tw

<http://www.ccandc.com.tw>

1. Introduction

Thank you for purchasing your CC&C 11Mbps Wireless LAN PC Card. You are about to install a networking system that is not only fast and powerful, but also easy to set up and simple to maintain. In a short time you and those in your network will be able to share a local printer and files, access the internet, and Roam about the office wire-free.

This wireless networking solution has been designed for both large and small businesses, and it is scalable so that you can easily add users and new network features as your business grows.

This manual will assist you in the installation procedure.

2. WL-1100 installation

2.1 Hardware installation

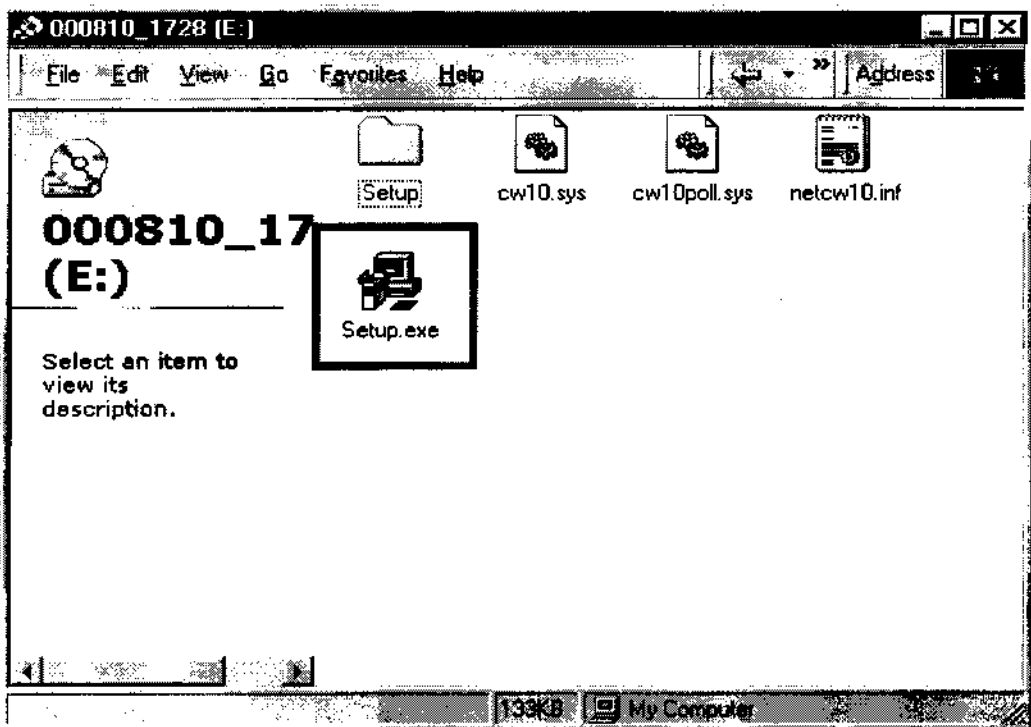
For detailed information on how to add new hardware to your specific computer configuration, please follow the guidelines of your computer manufacturer.

2.2 WL-1100 Wireless LAN PC Card Windows 98 installation

This section will assist you with installing the WL-1100 Wireless LAN PC Card under the Windows 98 operating system.

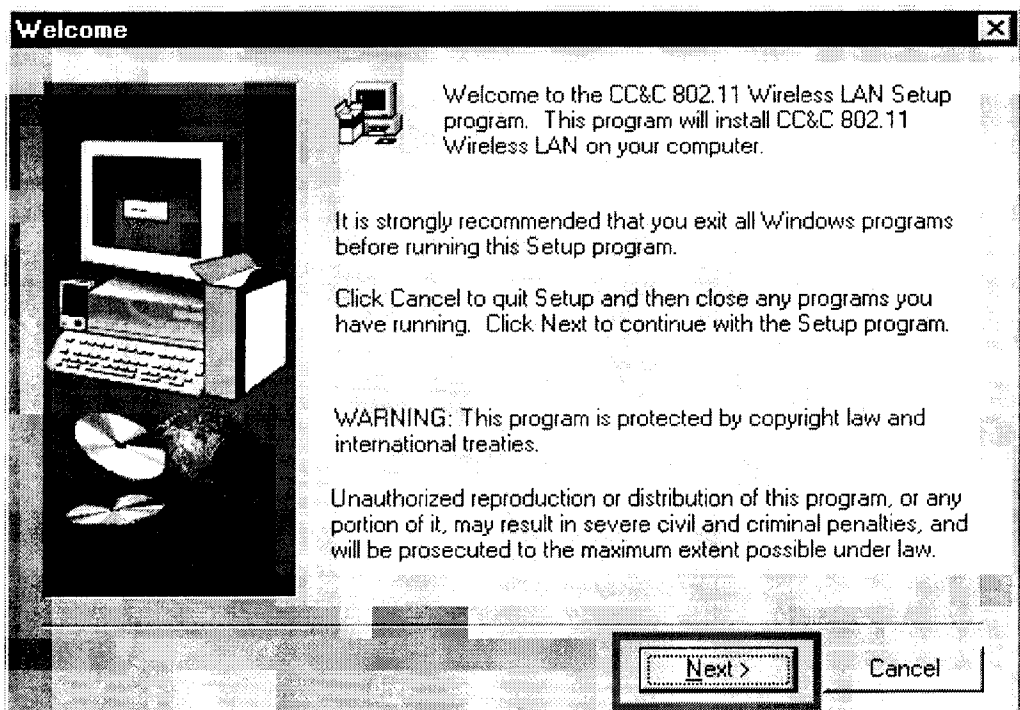
2.2.1 Wireless LAN Utility Installation

1. Do not insert CC&C Wireless LAN PC Card into PCMCIA slot, Select **My Computer**, Choose **CD-ROM Drive**, and double click to execute **Setup.exe** file

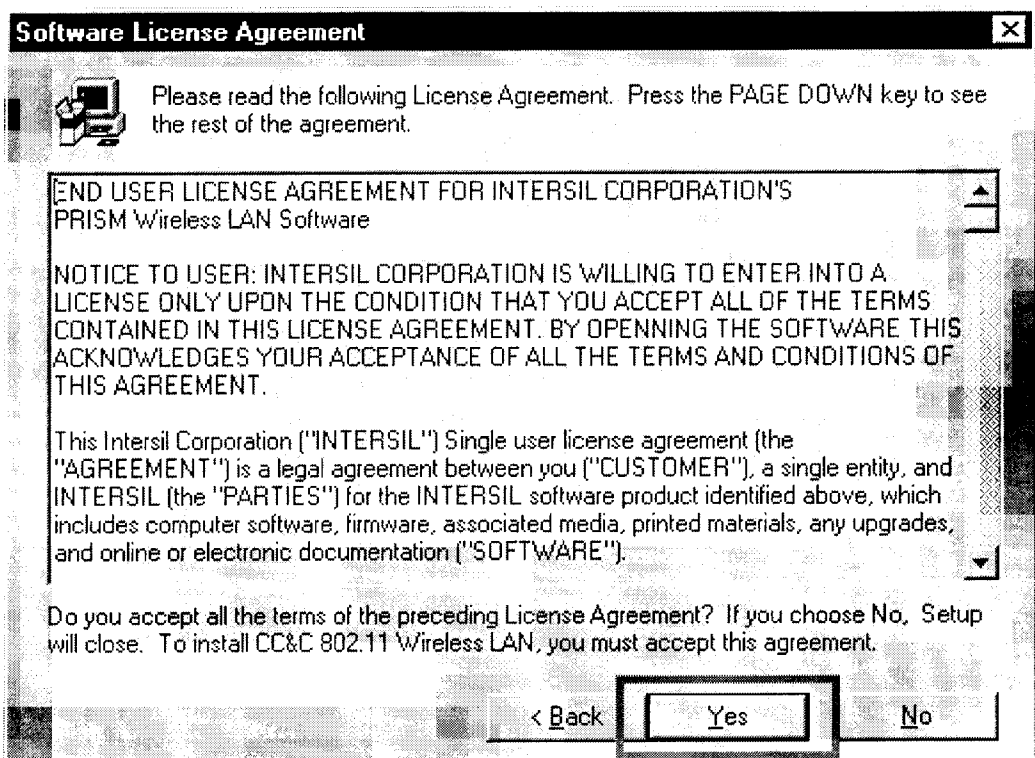


2. Utility screen displays as shown

Click **Next**

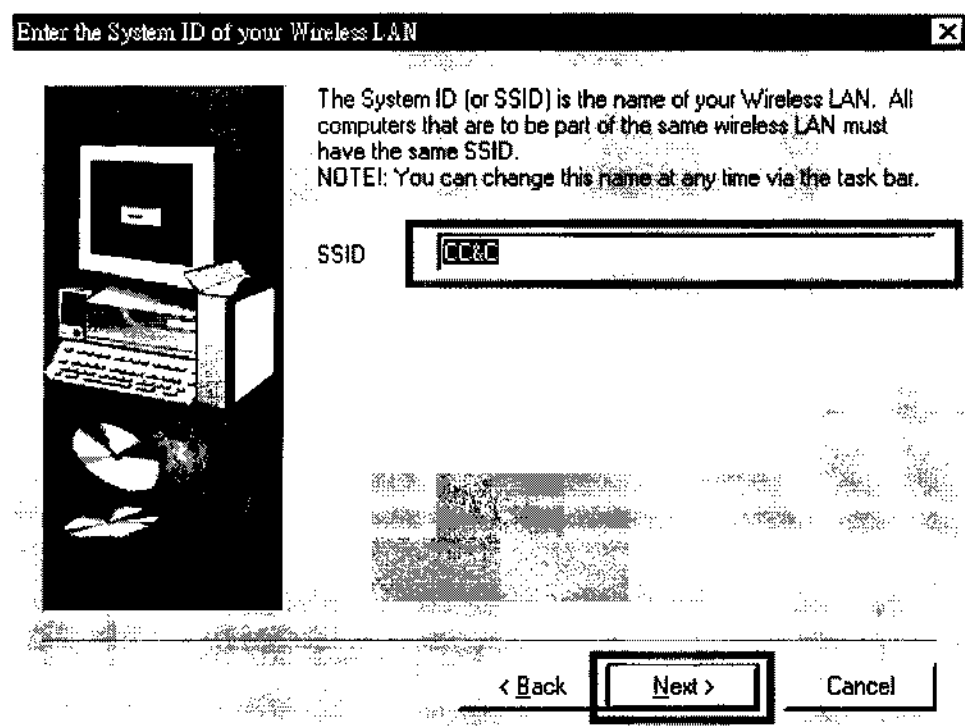


3. Click Yes

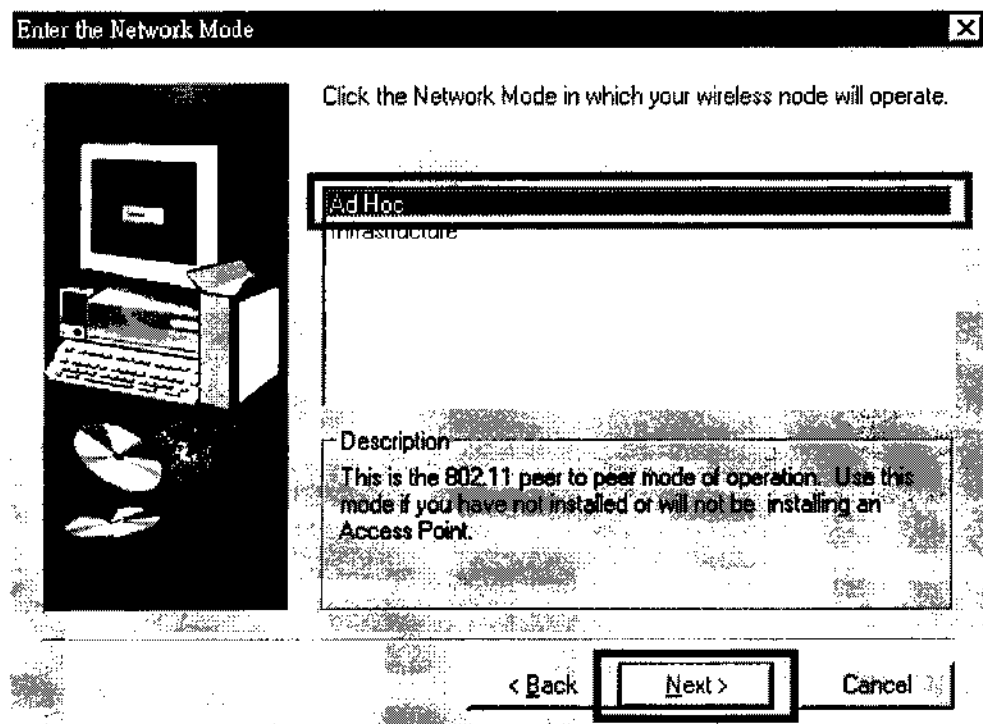


4. Type in **SSID** and click **Next**

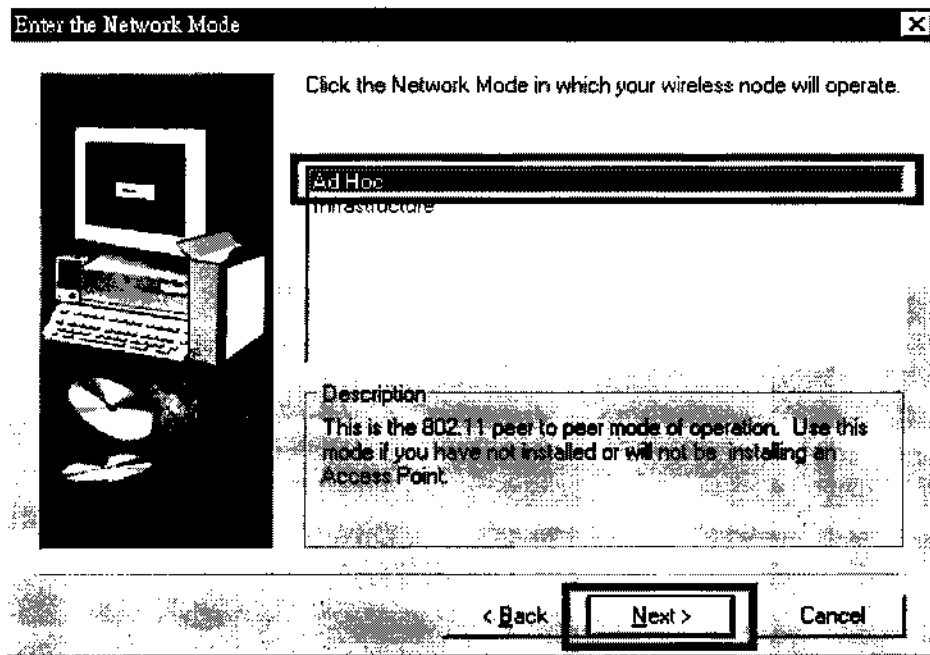
(**SSID** : Could be any combination of letter and/or number)



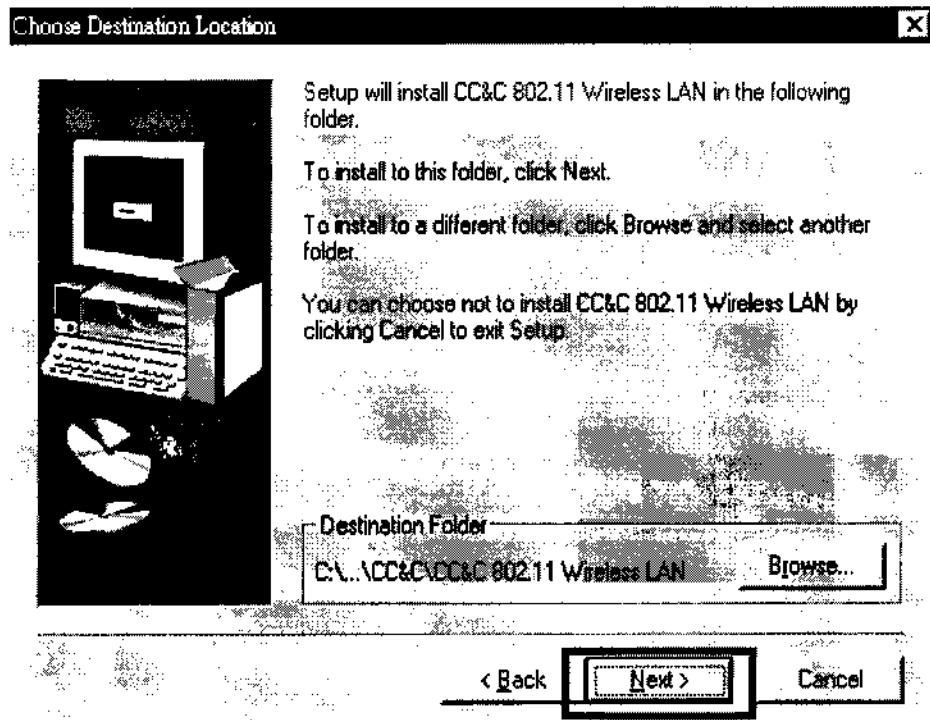
5. Choose **Ad Hoc** and click **Next**



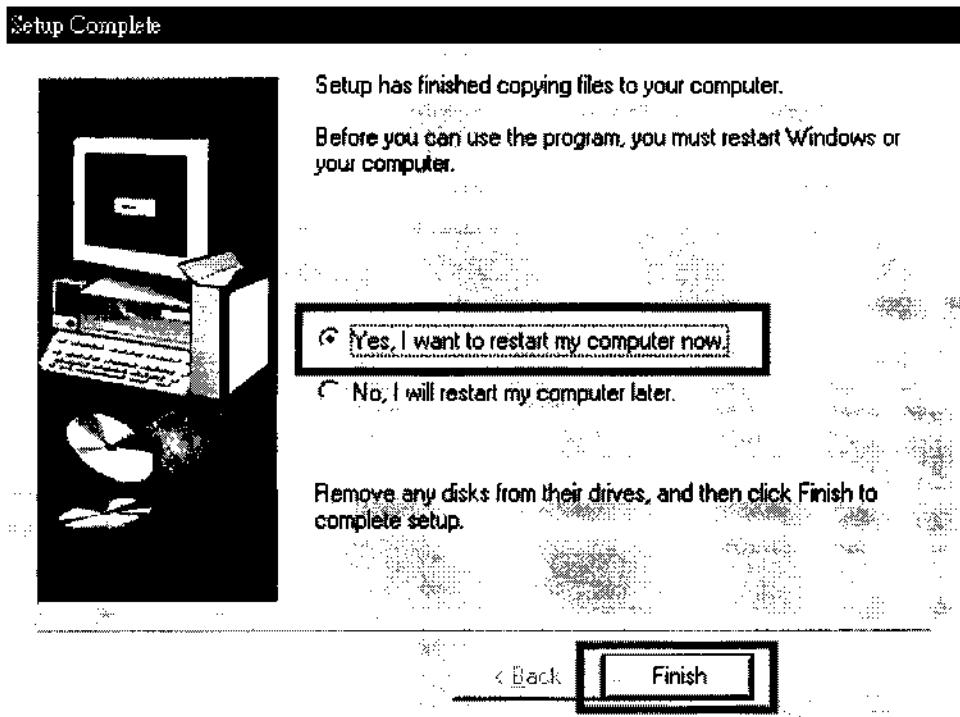
6. Choose Ad Hoc and click Next



7. Click Next

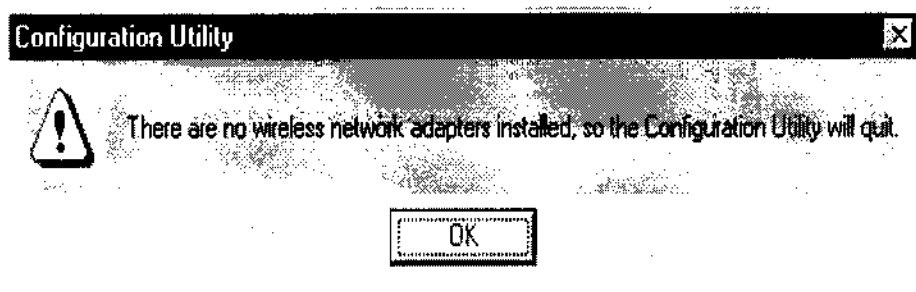


8. Click **Finish** to restart the computer



2.2.2 Driver Program installation and Network configuration

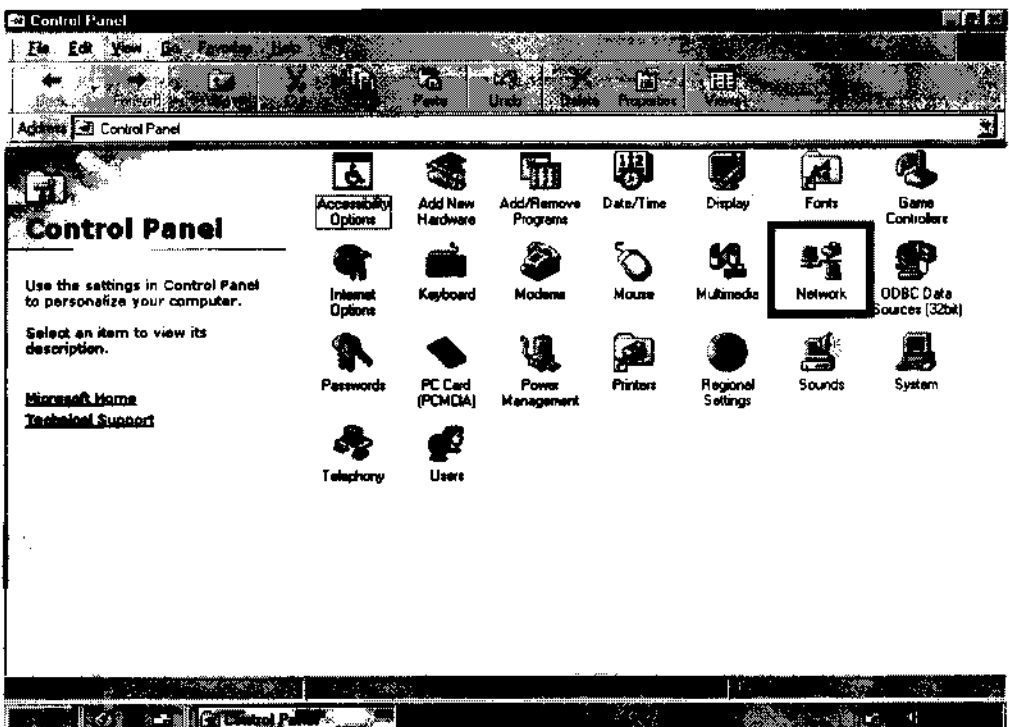
1. Insert the **CC&C Wireless LAN PC Card**
Utility screen displays as shown. Click **OK**



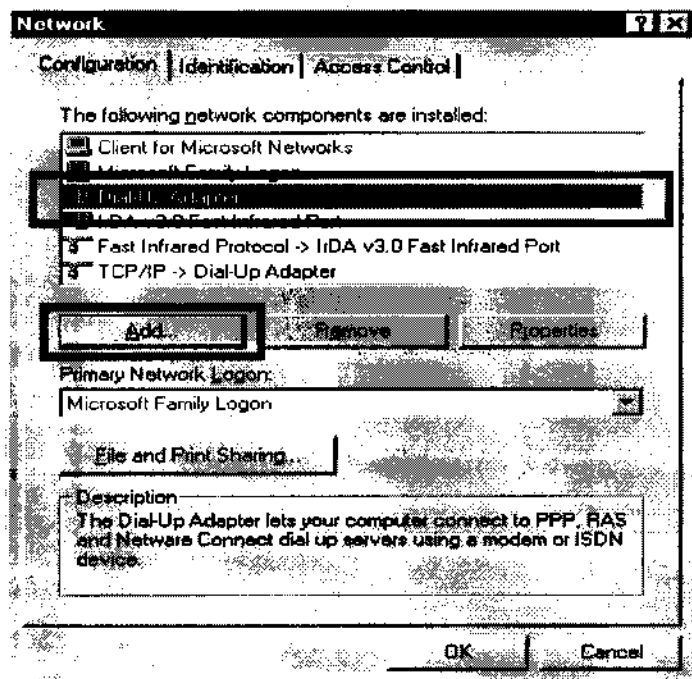
2. Select **Start** → **Settings** → **Control Panel** to set up wireless network adapter configuration



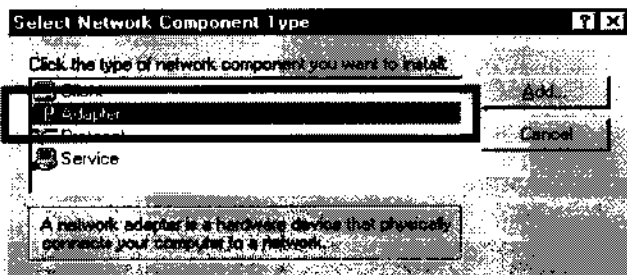
3. Select **Network**



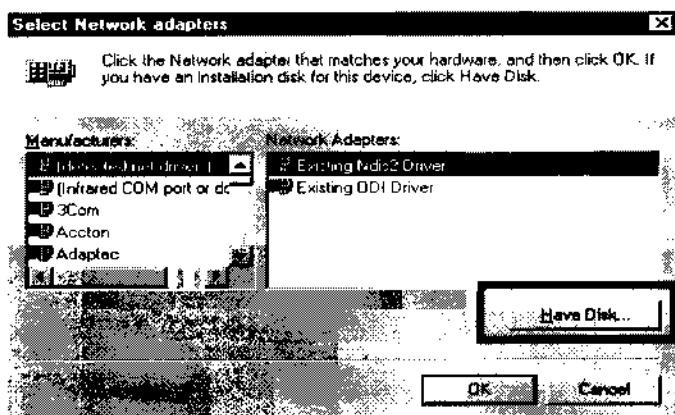
4. Choose Dial-Up Adapter and Click Add



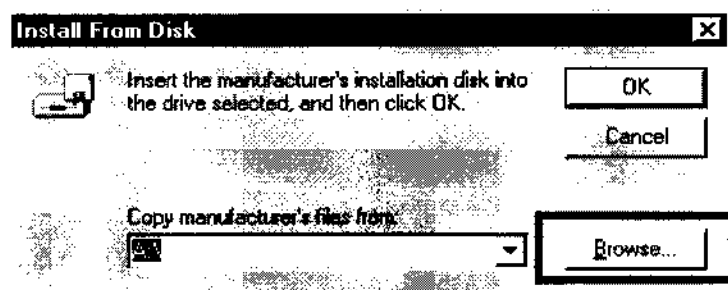
5. Choose Adapter and click Add



6. Click Have Disk

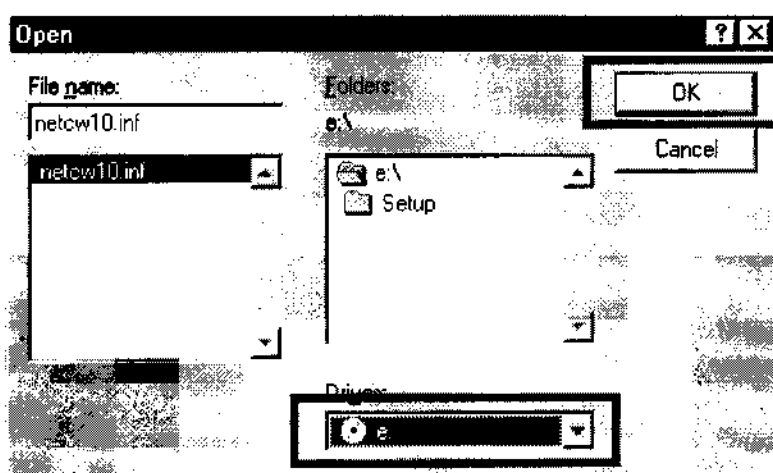


7. Click **Browse**

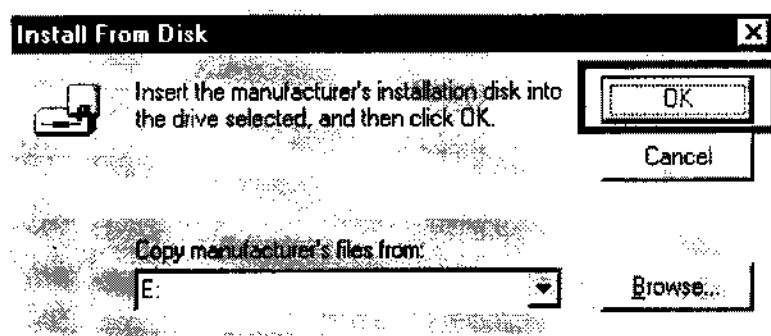


8. Choose CD-ROM Drive

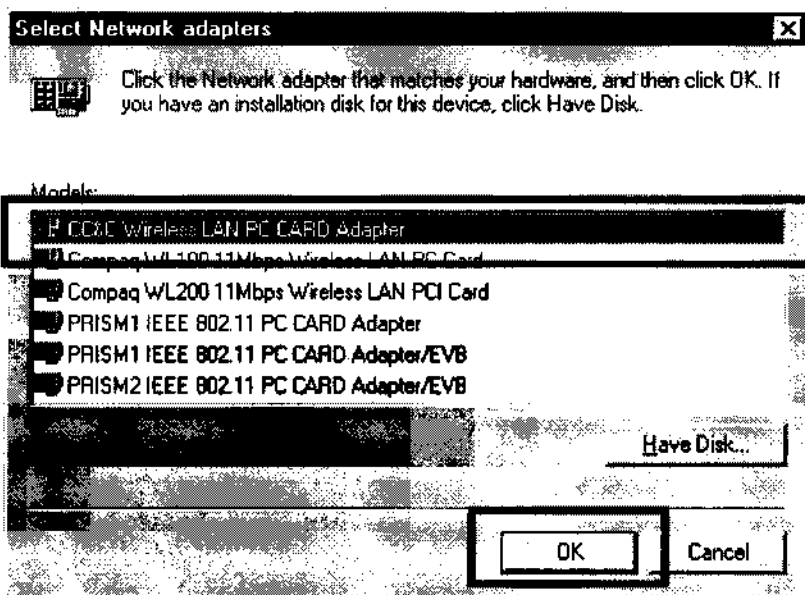
select "netcw10.inf" then Click O.K.



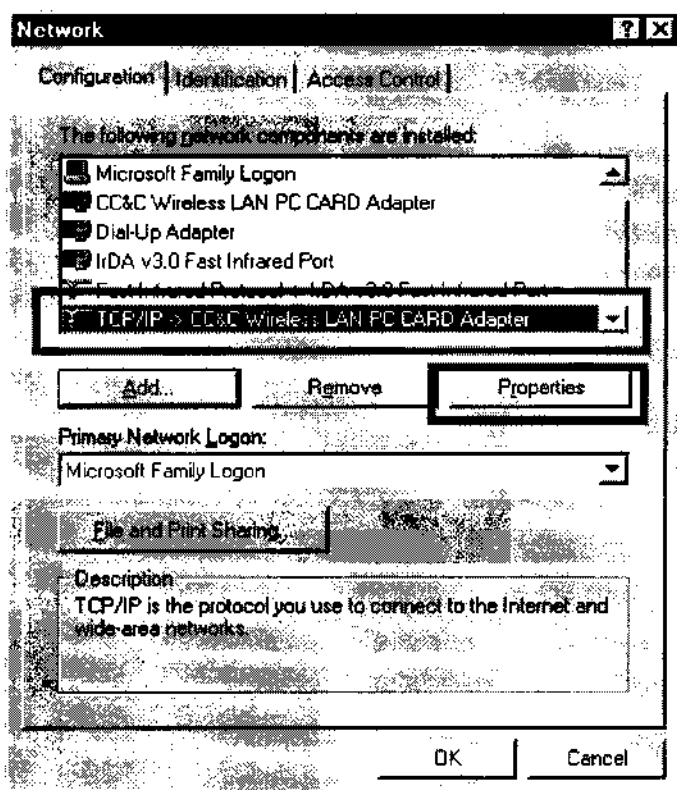
9. Click **O.K.**



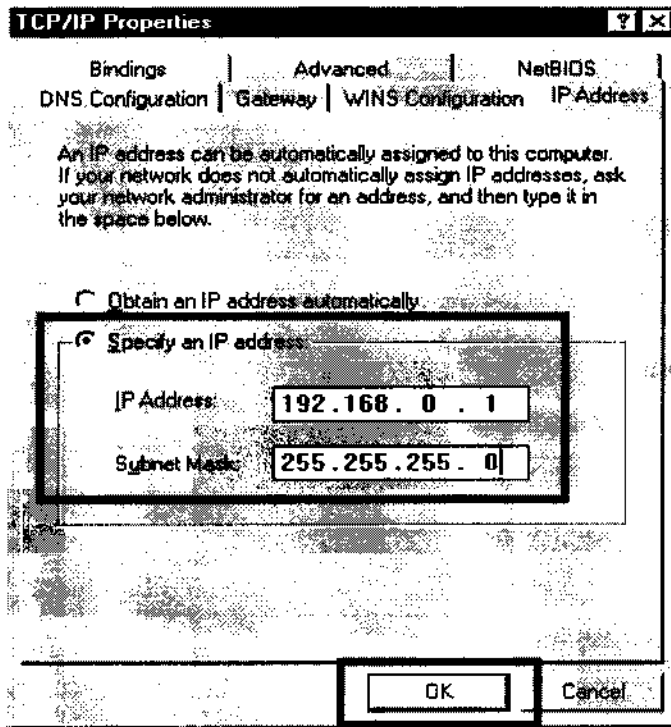
10. Select "CC&C Wireless LAN PC CARD Adapter" then Click O.K.



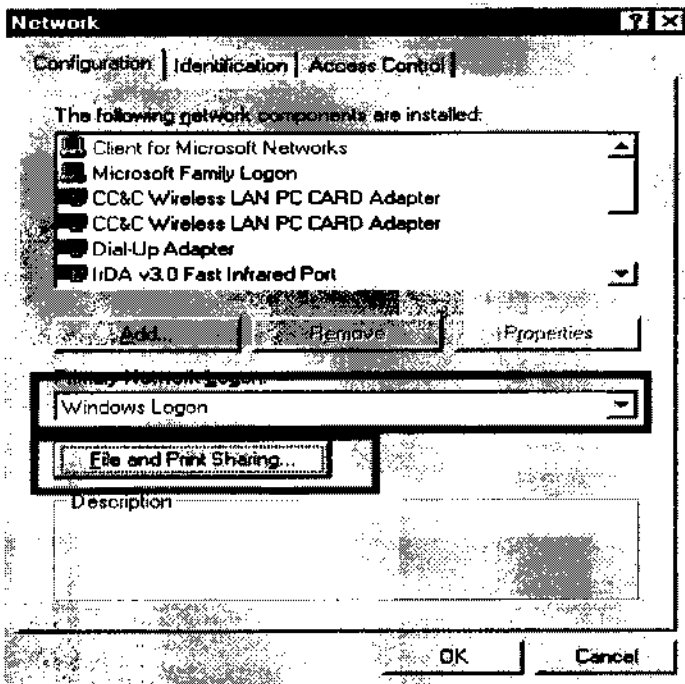
11. Select "TCP/IP → CC&C Wireless LAN PC CARD Adapter" then Click Properties



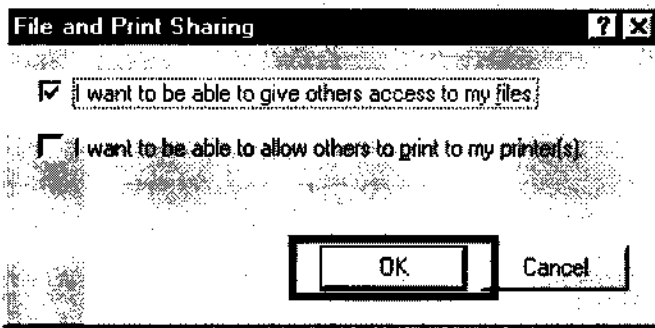
12. Type in IP Address as the screen picture shown:
 (e.g. 192.168.0.1~255, different in each computer)
 Sub-network mask:
 (255.255.255.0, same for every computer)
 then Click O.K.



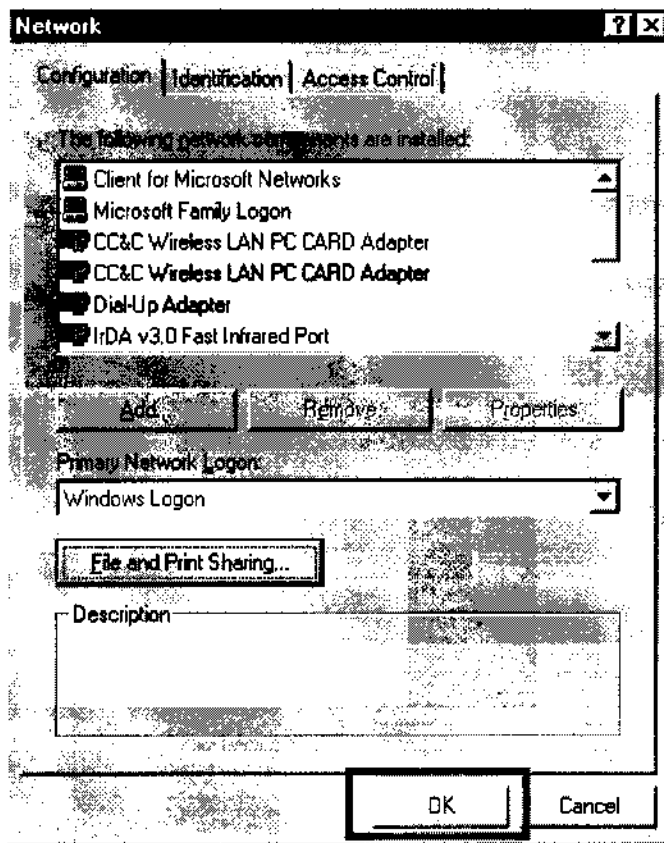
13. Choose the same Primary Network Logon use default setting
 Click File and Print Sharing



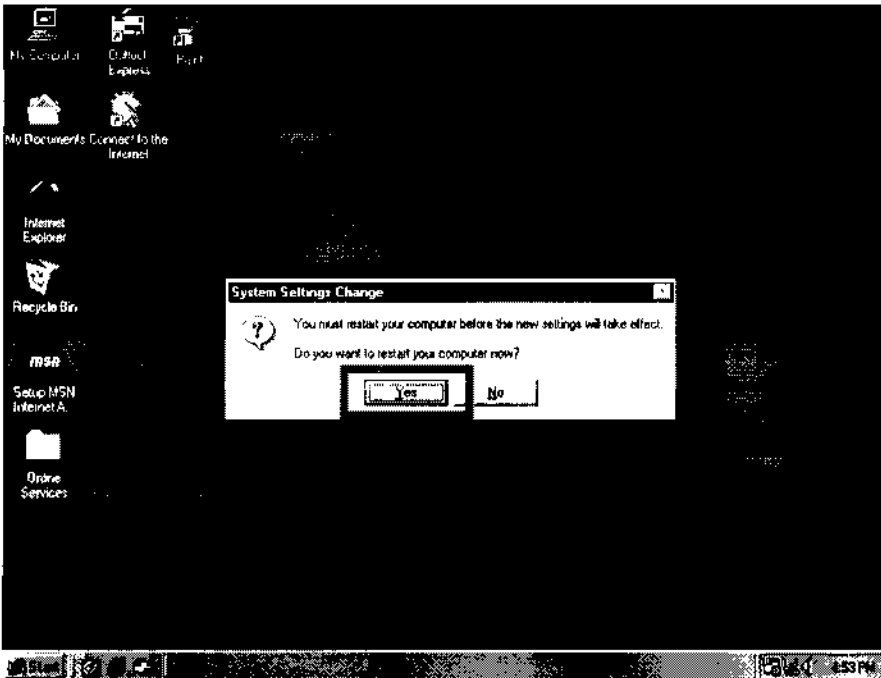
14. Select the option then Click O.K.



15. Click O.K.



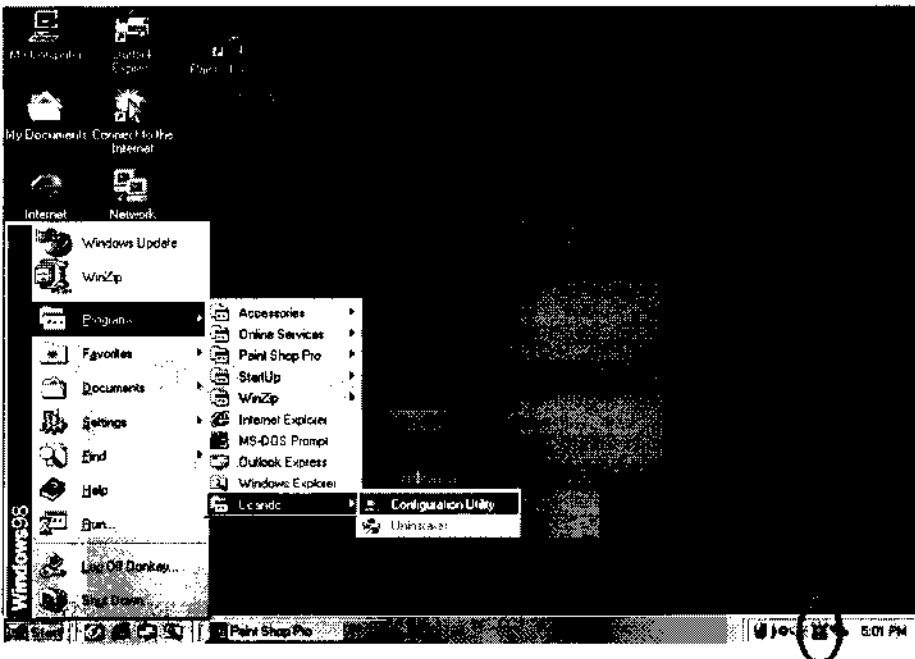
16. Click **Yes** to re-start the computer



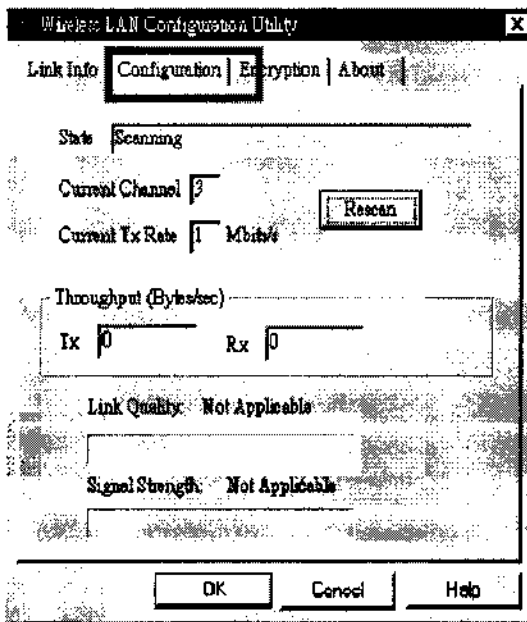
2.2.3 Utility Program Set-up

1. Insert the **CC&C Wireless LAN PC Card**

Click **Start** → **Programs** → **CCandC** → **Configuration Utility** Or Click the Symbol as shown in circle



2. The Utility displays as shown below
 Choose the Configuration



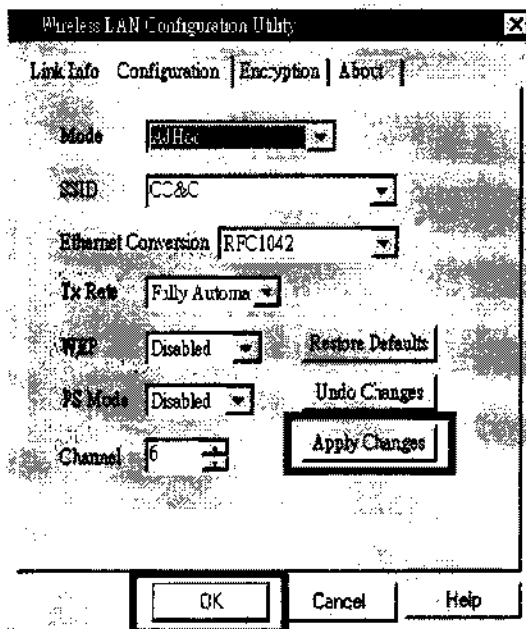
3. Set each field as followed:

Mode : AdHoc

SSID : Make sure the SSID setting is the same as the one which you prepare to link with (or keep the pre-setting).

Channel : make sure the channel setting is the same as the one which you prepare to link with (or keep the pre-setting = 6).

then Click **Apply Changes** and click OK again



4. Restart the computer to complete the installation.

3. Technical Specifications

WL-1100 Wireless LAN PC Card

Driver Support

Windows 95 / 98 / 2000 / NT4.0 or higher
Linux

Standards Support

IEEE 802.11b standard for wireless LAN

Radio Specifications

Frequency Range : 2.4-2.4835 GHz,
Direct Sequence Spread Spectrum
Antenna system : One integrated antenna
Mobility : Seamless roaming across cell boundaries with handover

Power Specifications

Operating Voltage : +3.3 Voltage DC
Active Transmitting : 350mA
Active Receiving : 250mA

Specific Features

Supported bit rates : 11Mbps 、 5.5Mbps 、 2Mbps and 1Mbps