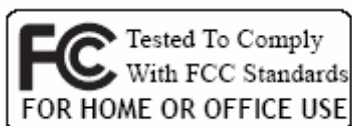


IEEE 802.11n/b/g

11n wireless LAN usb adaptor WL-6200C

USER'S GUIDE

**VERSION 1.0
2008/05/08**



© All rights reserved.

All trade names are registered trademarks of respective manufacturers listed.

This manual may not be copied in any media or form without the written consent of original maker.

TABLE OF CONTENTS

Information To User	I
1. Introduction	1
2. Wireless LAN Basics	3
3. IP ADDRESS	4
4. Install Driver/Utility	5
4.1 Windows XP/2K.....	5
4.2 Windows Vista.....	6
5. Wireless Network Configuration	7
5.1 Utility Icon	7
5.2 Client Mode (Default Setting).....	7
6. Technical Specifications	11
7. Troubleshooting	12
8. Glossary	13

INFORMATION TO USER

Federal Communication Commission Interference Statement

This equipment has been tested and found to comply with the limits for a Class B digital device, pursuant to Part 15 of the FCC Rules. These limits are designed to provide reasonable protection against harmful interference in a residential installation.

This equipment generates, uses and can radiate radio frequency energy and, if not installed and used in accordance with the instructions, may cause harmful interference to radio communications. However, there is no guarantee that interference will not occur in a particular installation. If this equipment does cause harmful interference to radio or television reception, which can be determined by turning the equipment off and on, the user is encouraged to try to correct the interference by one of the following measures:

- * Reorient or relocate the receiving antenna.
- * Increase the separation between the equipment and receiver.
- * Connect the equipment into an outlet on a circuit different from that to which the receiver is connected.
- * Consult the dealer or an experienced radio/TV technician for help.

REGULATION INFORMATION

The 11n wireless LAN usb adaptor must be installed and used in strict accordance with the manufacturer's instructions. This device complies with the following radio frequency and safety standards.

This device complies with Part 15 of the FCC Rules. Operation is subject to the following two conditions:
(1) This device may not cause harmful interference.
(2) This device must accept any interference received, including interference that may cause undesired operation.

FCC RF Radiation Exposure Statement:

This equipment complies with FCC radiation exposure limits set forth for an uncontrolled environment. End users must follow the specific operating instructions for satisfying RF exposure compliance.

To comply with the FCC RF exposure compliance requirements, this transmitter must not be co-located or operating in conjunction with any other antenna or transmitter.

Your device contains a low power transmitter. When device is transmitted it sends out Radio Frequency (RF) signal. Use only with supplied antenna. Unauthorized antenna, modification, or attachments could damage the transmitter and may violate FCC regulations.

You are cautioned that changes or modifications not expressly approved by the part responsible for compliance could void the user's authority to operate the equipment.

IC Statement

"Operation is subject to the following two conditions: (1) this device may not cause interference, and (2) this device must accept any interference, including interference that may cause undesired operation of the device."

IC Radiation Exposure Statement

This EUT is compliance with SAR for general population/uncontrolled exposure limits in IC RSS-102 and had been tested in accordance with the measurement methods and procedures specified in IEEE 1528. This equipment should be installed and operated with minimum distance 1.5cm between the radiator & your body.

This device and its antenna(s) must not be co-located or operating in conjunction with any other antenna or transmitter.

Country Code selection feature to be disabled for products marketed to the US/CANADA

This Class [B] digital apparatus complies with Canadian ICES-003.
 Cet appareil numérique de la classe [B] est conforme à la norme NMB-003 du Canada.

This Category II radio communication device complies with Industry Canada Standard RSS-310.
 Ce dispositif de radio communication de catégorie II respecte la norme CNR-310 d'Industrie Canada.

The channel identifiers, channel center frequencies, and regulatory domains of each 22-MHz-wide channel are shown in following Table.

Channel Identifier	Frequency (MHZ)	Regulatory Domains					
		Japan	ETSI	North America	Israel	France Outdoor	Mexico
1	2412	∨	∨	∨		∨	
2	2417	∨	∨	∨		∨	
3	2422	∨	∨	∨	∨	∨	
4	2427	∨	∨	∨	∨	∨	
5	2432	∨	∨	∨	∨	∨	
6	2437	∨	∨	∨	∨	∨	
7	2442	∨	∨	∨	∨	∨	
8	2447	∨	∨	∨	∨	∨	
9	2452	∨	∨	∨	∨	∨	
10	2457	∨	∨	∨			∨
11	2462	∨	∨	∨			∨
12	2467	∨	∨				
13	2472	∨	∨				
14	2484	∨					



INTRODUCTION

Thank you for your purchase of the 11n wireless LAN usb adaptor. Featuring wireless technology, this wireless networking solution has been designed for both large and small businesses, and it is scalable so that you can easily add more users and new network features depending on your business scale.

FEATURES

Support Microsoft 2000, XP, x64 and Vista.

Operating distance of up to 300 meters in free space.

300/270/240/180/120/90/60/54/48/36/30/24/22/18/12/11/6/5.5/2/1 Mbps selectable Data Rate.

64/128-bit WEP , WPA (Wi-Fi Protected Access), WPA2

2.400GHz ~ 2.4835GHz unlicensed ISM Frequency Band.

Modulation Method :

IEEE 802.11b : DSSS (Direct Sequence Spread Spectrum).

IEEE 802.11g / 802.11n : OFDM (Orthogonal Frequency Division

Multiplexing). Easy operation and setting up.

SYSTEM REQUIREMENTS

Windows System : 2000, XP, x64, Vista.

PCs must have a device driver installed. It allows you to communicate with 11n wireless LAN usb adaptor.

BEFORE YOU START

1. Confirm Box Contents

- ◆ 11n wireless LAN usb adaptor
- ◆ Quick Start Guide
- ◆ Driver CD

CONNECTING YOUR 11n wireless LAN usb adaptor TO PC

Quick Start Guide

Connect your 11n wireless LAN usb adaptor to your PC. Install driver.

GETTING TO KNOW WIRELESS LAN ADAPTER

LED

LED turns on when WLAN link to WLAN adaptor or AP.

LED is blinking when WLAN Adapter is active.

2

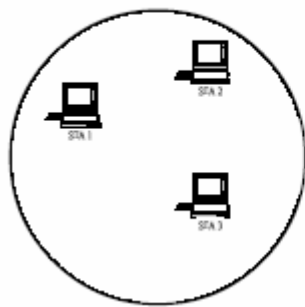
WIRELESS LAN BASICS

Wireless LAN network defined by IEEE 802.11b/g standard committee could be configured as :

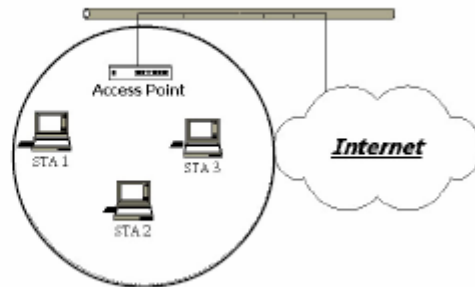
Ad Hoc wireless LAN.

Infrastructure wireless LAN.

Ad Hoc network is a group of PCs installed with wireless LAN cards, this group of PCs is called a BSS (Basic Service Set). PCs in this group can use their wireless LAN cards to communicate with each other, but can not connect to the **Internet**.



Ad Hoc Wireless Network



Infrastructure Wireless Network

The most obvious difference between **Infrastructure** wireless network and **Ad Hoc** wireless network is that the PCs in **Infrastructure** wireless network can access the resource in the Internet through **Access Point**.

Depending on your requirement, you can easily set up your PC's network to be a "**Ad Hoc**" or "**Infrastructure**" wireless network. Generally speaking, if in your network, there is an **Access Point** in it, we recommend you to set your network as an "**Infrastructure**", so it can connect to the **Internet**.

3

IP ADDRESS

To use the 11n wireless LAN usb adaptor with a computing device, the WLAN Adapter must be equipped with a proper Interface. All drivers and supporting software for the WLAN Adapter must be installed and configured first.

Ask your system administrator for the following information, which you may need to provide during driver installation :

Your Wireless Client

Name. Your Wireless
SSID.

Your computer's unique client name and workgroup name. For your network account, your user name and password.

Your IP address, gateway address, and subnet mask if you're not using a DHCP client.

Any computer on a network is identified by a unique network address. There are two methods to assign a network address to a computer on a TCP/IP network :

Static IP addressing.

Dynamic IP addressing (DHCP Client).

In network with static IP addressing, the network administrator manually assigns an IP address to each computer. Once a static IP address is assigned, a computer uses the same IP address every time it reboots and logs on to the network. You may manually change the IP address in the

Network Properties dialog box. Network using static IP address is easy to set up and do not require additional network management software.

In network with dynamic IP addressing, a DHCP server in the network dynamically assigns IP addresses to all clients every time they log on to the network. Network using dynamic IP address requires setting up and running a DHCP Server.

4

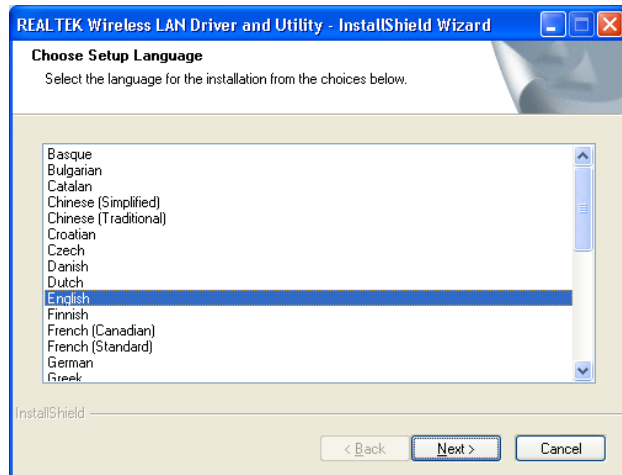
INSTALL DRIVER / UTILITY

Windows XP/2K

The installation & driver CD will automatically activate the autorun installation program after you insert the disk into your CD drive.

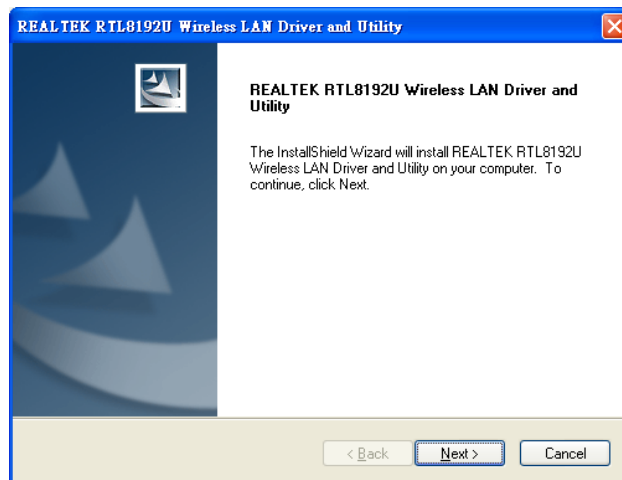
Step 1 :

Insert the installation CD into your CD-ROM. Installation program will prompt language setup. Choose the Setup Language you would like to use and click **Next** button.

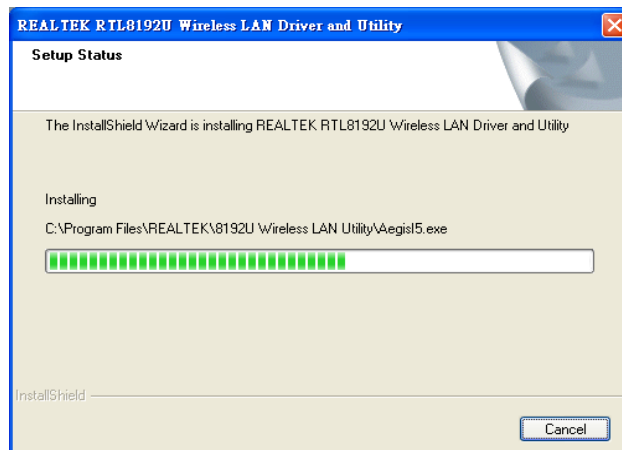


Step 2 :

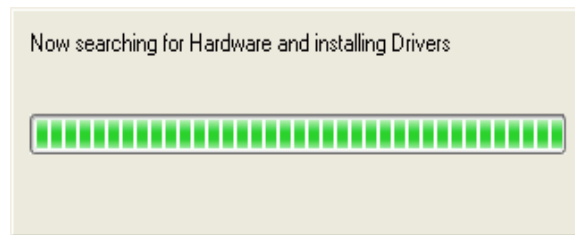
Welcome Installation dialog prompt shown. Click **Next** to continue. Click **Cancel** to close installation.



Installing and configuring wlan utility.

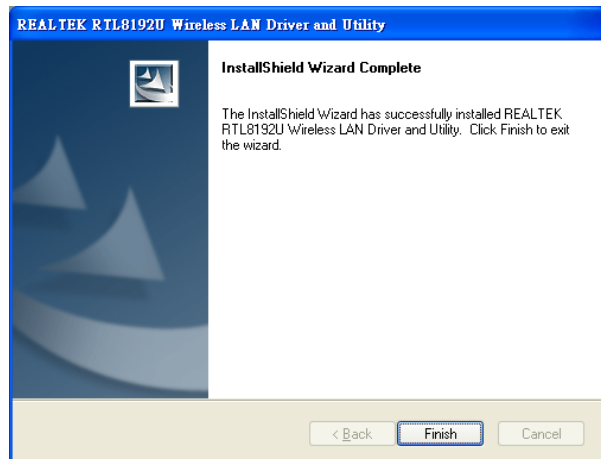


Installing drivers.



Step 3 :

Click **Finish** to complete installation.



■ **Windows Vista**

Just insert device into proper interface. Vista will install driver automatically. CD also contains the latest driver from chipset vendor.

5

WIRELESS NETWORK CONFIGURATION

11n wireless LAN usb adaptor uses its own management software. All functions controlled by users are provided by this application. When you insert the WLAN Adapter into your laptop or desktop, a icon should appear in the Windows System Tray automatically.

5.1 Utility Icon

- Client mode utility running but no WLAN Adapter plugged



- Client mode utility running and WLAN Adapter scan available network.



- Client mode utility running and WLAN Adapter can not scan any AP



- AP mode utility running.



5.2 Client Mode (Default Setting)

5.2.1 Wireless Device Control

<input checked="" type="checkbox"/> Show Tray Icon	<input type="checkbox"/> Disable Adapter
<input type="checkbox"/> Radio Off	<input type="checkbox"/> Windows Zero Config

- Show Tray Icon – Show icon or not show icon in systray.
- Radio Off – Stop wireless signal.
- Disable Adapter – Stop wireless device.
- Windows Zero Config – Use windows default utility to configure Adapter.

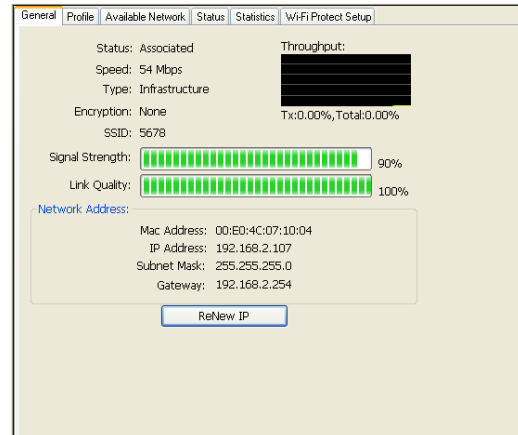
5.2.1 GENERAL SETTING

Once device is set, double click on that icon and the configuration window will pop up as shown. It shows the current connected network. The signal strength and link quality are displayed also. The bar graph displays the quality and strength of the link

between the node and its Access Point. Link Quality is a measurement of receiving and transmitting performances over the radio.

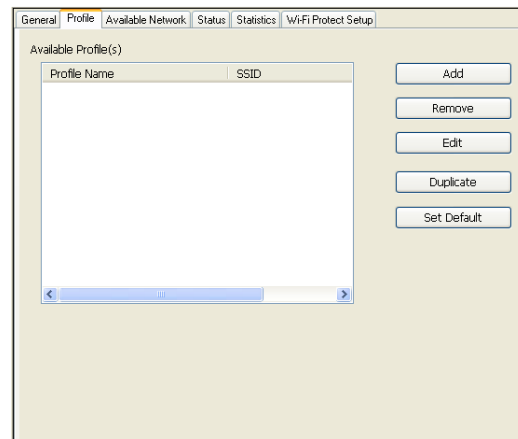
Network Address displays current MAC Address, IP Address, Subnet. and Gateway.

Click **Renew IP** button to refresh IP address leased from wireless AP.



5.2.2 PROFILE SETTING

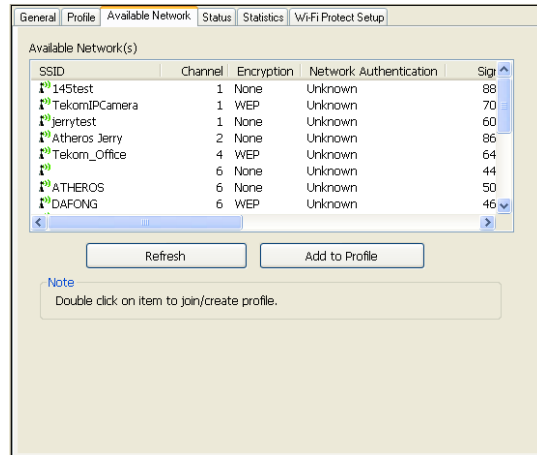
In profile tab, you can **Add, Remove, Edit, Duplicate** and **Set Default** to manipulate profile content manually. Strongly recommend to use profile after you do **Available Network**.



5.2.3 AVAILABLE NETWORK SETTING

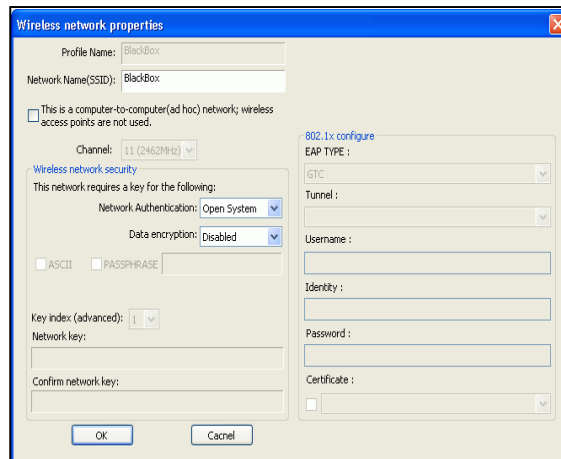
Click **Available Network** tab and it will show all available networks that radio can reach. Select proper SSID & BSSID you want to connect.

Click **Refresh** button to force and rescan available networks currently.



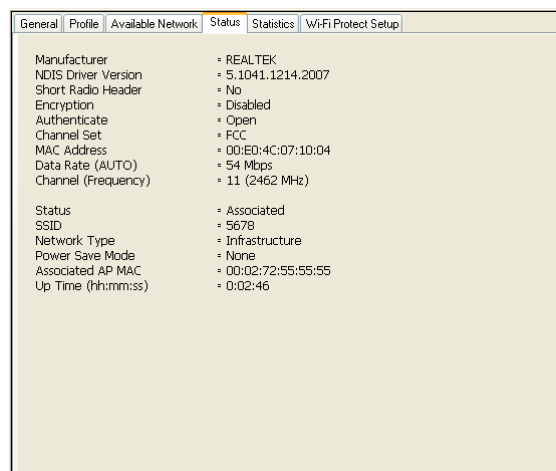
Select one of SSIDs, and click **Add to Profile** to create profile that can be configured more wireless parameters.

In this page, you can edit your profile name, configure wireless security like WEP, WPA, WPA2, 802.1x ...etc. After finishing setup, click **OK** button to save configuration



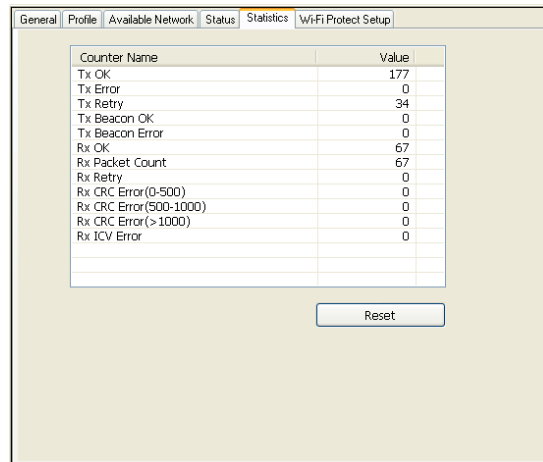
5.2.4 Status

Status page tab, shows all wireless, networking and device driver version in details.



5.2.5 Statistics

Statistics page tab will show real-time TX/RX relative counters to check or evaluate the wireless performance. Click **Reset** button to set counter to zero.

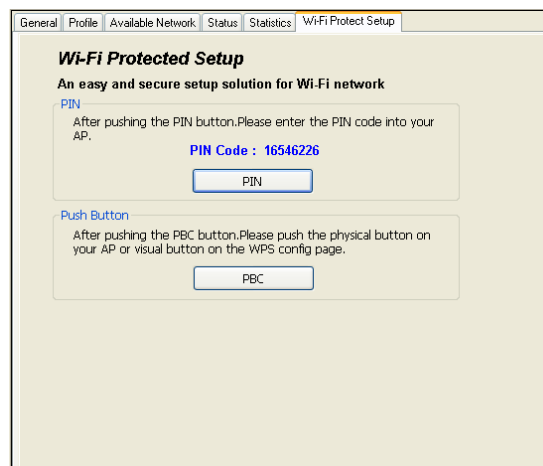


The screenshot shows the 'Statistics' tab in a web interface. It contains a table with two columns: 'Counter Name' and 'Value'. The table lists various wireless performance metrics. Below the table is a 'Reset' button.

Counter Name	Value
Tx OK	177
Tx Error	0
Tx Retry	34
Tx Beacon OK	0
Tx Beacon Error	0
Rx OK	67
Rx Packet Count	67
Rx Retry	0
Rx CRC Error(0-500)	0
Rx CRC Error(500-1000)	0
Rx CRC Error(> 1000)	0
Rx ICV Error	0

5.2.6 Wi-Fi Protected Setup

An easy and secure setup solution for Wi-Fi network. you can choose PIN Code or Push Button method to connect to an AP.



The screenshot shows the 'Wi-Fi Protected Setup' page. It features two main sections: 'PIN' and 'Push Button'. The 'PIN' section includes a 'PIN Code : 16546226' and a 'PIN' button. The 'Push Button' section includes a 'PBC' button. The page title is 'Wi-Fi Protected Setup' and the subtitle is 'An easy and secure setup solution for Wi-Fi network'.

6

TECHNICAL SPECIFICATIONS

Product Name	11n wireless LAN usb adaptor
Chipset	Realtek RTL8192+RTL8256
Standard	IEEE 802.11b, IEEE 802.11g, IEEE 802.11n
Frequency Band	2.4GHz ~ 2.4835GHz unlicensed ISM band
Spread Spectrum	IEEE 802.11b : DSSS IEEE 802.11g : OFDM IEEE 802.11n : OFDM
Modulation	BPSK, QPSK, 16QAM, 64QAM
Data Rate	IEEE 802.11b : 1, 2, 5.5, 11Mbps IEEE 802.11g : 6, 11, 12, 18, 22, 24, 30, 36, 48, 54, 60, 90Mbps IEEE 802.11n : 120, 180, 240, 270 and Maximum of 300Mbps
Operation Mode	Ad hoc, Infrastructure
Transmitter Power	13 dBm @11b, 13 dBm @11g, 13 dBm @11n
Receive Sensitivity	Operating at 11Mbps: < -80 dBm @8% FER, 54 Mbps: < -68 dBm @8% FER HT20(2RX) MCS=0 < -84dBm MCS=15 < -69dBm HT40(2RX) MCS=0 < -84dBm MCS=15 < -69dBm
Operating Range	Indoor up to 100m Outdoor up to 280m
Security	64-bit , 128-bit WEP, WPA / WPA2 (TKIP/AES)
LED	power
Operating System	2000, XP, x64, Vista
Operating Temperature	-20 ~ 55 Celsius degree
Storage Temperature	-20 ~ 70 Celsius degree
Humidity	5 ~ 90% (non-condensing)
Size	90 (L) x 26 (W) x 10.95 (H) mm



TROUBLESHOOTING

Symptom :

The LED is off.

Remedy :

Make sure the PC Card is inserted properly. Otherwise contact your vendor.

Symptom :

The LED is always on not blinking.

Remedy :

Make sure that you have installed the driver from attached CD. Otherwise contact your vendor.

Symptom :

The LED is blinking but the PC Card icon does not appear in your icon tray.

Remedy :

Make sure that you have installed the Utility from the attached CD.

Symptom :

The PC Card is linking, but can't share files with others.

Remedy :

Make sure the **file and printer sharing** function is enabled. You can enable the function by checking the icon of **My Computer -> Control Panel -> Network -> file and printer sharing -> I want to be able to give others to access to my files.**

Symptom :

Slow or poor performance under AP mode

Remedy :

Try to select another channel for the communicating group or move your device closer to the Access Point.

IEEE 802.11 Standard

The IEEE 802.11 Wireless LAN standards subcommittee, which is formulating a standard for the industry.

Access Point

An internetworking device that seamlessly connects wired and wireless networks together.

Ad Hoc

An Ad Hoc wireless LAN is a group of computers, each with a WLAN adapter, connected as an independent wireless LAN. Ad Hoc wireless LAN is applicable at a departmental scale for a branch or SOHO operation.

BSSID

A specific Ad Hoc LAN is called a Basic Service Set (BSS). Computers in a BSS must be configured with the same BSSID.

DHCP

Dynamic Host Configuration Protocol - a method in which IP addresses are assigned by server dynamically to clients on the network. DHCP is used for Dynamic IP Addressing and requires a dedicated DHCP server on the network.

Direct Sequence Spread Spectrum

This is the method the wireless cards use to transmit data over the frequency spectrum. The other method is frequency hopping. Direct sequence spreads the data over one frequency range (channel) while frequency hopping jumps from one narrow frequency band to another many times per second.

ESSID

An Infrastructure configuration could also support roaming capability for mobile workers. More than one BSS can be configured as an Extended Service Set (ESS). Users within an ESS could roam freely between BSSs while served as a continuous connection to the network wireless stations and Access Points within an ESS must be configured with the same ESSID and the same radio channel.

Ethernet

Ethernet is a 10/100Mbps network that runs over dedicated home/office wiring. Users must be wired to the network at all times to gain access.

Gateway

A gateway is a hardware and software device that connects two dissimilar

systems, such as a LAN and a mainframe. In Internet terminology, a gateway is another name for a router. Generally a gateway is used as a funnel for all traffic to the Internet.

IEEE

Institute of Electrical and Electronics Engineers
Infrastructure

An integrated wireless and wired LAN is called an Infrastructure configuration. Infrastructure is applicable to enterprise scale for wireless access to central database, or wireless application for mobile workers.

ISM Band

The FCC and their counterparts outside of the U.S. have set aside bandwidth for unlicensed use in the so-called ISM (Industrial, Scientific and Medical) band. Spectrum in the vicinity of 2.4 GHz, in particular, is being made available worldwide. This presents a truly revolutionary opportunity to place convenient high-speed wireless capabilities in the hands of users around the globe.

Local Area Network (LAN)

A LAN is a group of computers, each equipped with the appropriate network adapter card connected by cable/air, that share applications, data, and peripherals. All connections are made via cable or wireless media, but a LAN does not use telephone services. It typically spans a single building or campus.

Network

A network is a system of computers that is connected. Data, files, and messages can be transmitted over this network. Networks may be local or wide area networks.

Protocol

A protocol is a standardized set of rules that specify how a conversation is to take place, including the format, timing, sequencing and/ or error checking.

SSID

A Network ID unique to a network. Only clients and Access Points that share the same SSID are able to communicate with each other. This string is case-sensitive.

Static IP Addressing

A method of assigning IP addresses to clients on the network. In networks with Static IP address, the network administrator manually assigns an IP address to each computer. Once a Static IP address is assigned, a computer

uses the same IP address every time it reboots and logs on to the network, unless it is manually changed.

Temporal Key Integrity Protocol (TKIP)

The Temporal Key Integrity Protocol, pronounced tee-kip, is part of the IEEE 802.11i encryption standard for wireless LANs. TKIP is the next generation of WEP, the Wired Equivalency Protocol, which is used to secure 802.11 wireless LANs. TKIP provides per-packet key mixing, a message integrity check and a re-keying mechanism, thus fixing the flaws of WEP.

Transmission Control Protocol / Internet Protocol (TCP/IP)

TCP/IP is the protocol suite developed by the Advanced Research Projects Agency (ARPA). It is widely used in corporate Internet works, because of its superior design for WANs. TCP governs how packet is sequenced for transmission the network. The term "TCP/IP" is often used generically to refer to the entire suite of related protocols.

Transmit / Receive

The wireless throughput in Bytes per second averaged over two seconds.

Wi-Fi Alliance

The Wi-Fi Alliance is a nonprofit international association formed in 1999 to certify interoperability of wireless Local Area Network products based on IEEE 802.11 specification. The goal of the Wi-Fi Alliance's members is to enhance the user experience through product interoperability. The organization is formerly known as WECA.

Wi-Fi Protected Access (WPA)

The Wi-Fi Alliance put together WPA as a data encryption method for 802.11 wireless LANs. WPA is an industry-supported, pre-standard version of 802.11i utilizing the Temporal Key Integrity Protocol (TKIP), which fixes the problems of WEP, including using dynamic keys.

Wide Area Network (WAN)

A WAN consists of multiple LANs that are tied together via telephone services and / or fiber optic cabling. WANs may span a city, a state, a country, or even the world.

Wired Equivalent Privacy (WEP)

Now widely recognized as flawed, WEP was a data encryption method used to protect the transmission between 802.11 wireless clients and APs. However, it used the same key among all communicating devices. WEP's problems are well-known, including an insufficient key length and no automated method for distributing the keys. WEP can be easily

cracked in a couple of hours with off-the-shelf tools.

Wireless LAN (WLAN)

A wireless LAN does not use cable to transmit signals, but rather uses radio or infrared to transmit packets through the air. Radio Frequency (RF) and infrared are the commonly used types of wireless transmission. Most wireless LANs use spread spectrum technology. It offers limited bandwidth, usually under 11Mbps, and users share the bandwidth with other devices in the spectrum; however, users can operate a spread spectrum device without licensing from the Federal Communications Commission (FCC).

Fragment Threshold

The proposed protocol uses the frame fragmentation mechanism defined in IEEE 802.11 to achieve parallel transmissions. A large data frame is fragmented into several fragments each of size equal to fragment threshold. By tuning the fragment threshold value, we can get varying fragment sizes. The determination of an efficient fragment threshold is an important issue in this scheme. If the fragment threshold is small, the overlap part of the master and parallel transmissions is large. This means the spatial reuse ratio of parallel transmissions is high. In contrast, with a large fragment threshold, the overlap is small and the spatial reuse ratio is low. However high fragment threshold leads to low fragment overhead. Hence there is a trade-off between spatial re-use and fragment overhead.

Fragment threshold is the maximum packet size used for fragmentation. Packets larger than the size programmed in this field will be fragmented. If you find that your corrupted packets or asymmetric packet reception (all send packets, for example). You may want to try lowering your fragmentation threshold. This will cause packets to be broken into smaller fragments. These small fragments, if corrupted, can be resent faster than a larger fragment. Fragmentation increases overhead, so you'll want to keep this value as close to the maximum value as possible.

RTS (Request To Send) Threshold

The RTS threshold is the packet size at which packet transmission is governed by the RTS/CTS transaction. The IEEE 802.11-1997 standard allows for short packets to be transmitted without RTS/CTS transactions. Each station can have a different RTS threshold. RTS/CTS is used when the data packet size exceeds the defined RTS threshold. With the CSMA/CA transmission

mechanism, the transmitting station sends out an RTS packet to the receiving station, and waits for the receiving station to send back a CTS (Clear to Send) packet before sending the actual packet data. This setting is useful for networks with many clients. With many clients, and a high network load, there will be many more collisions. By lowering the RTS threshold, there may be fewer collisions, and performance should improve. Basically, with a faster RTS threshold, the system can recover from problems faster. RTS packets consume valuable bandwidth, however, so setting this value too low will limit performance.

Beacon Interval

In addition to data frames that carry information from higher layers, 802.11 includes management and control frames that support data transfer. The beacon frame, which is a type of management frame, provides the "heartbeat" of a wireless LAN, enabling stations to establish and maintain communications in an orderly fashion. Beacon Interval represents the amount of time between beacon transmissions. Before a station enters power save mode, the station needs the beacon interval to know when to wake up to receive the beacon (and learn whether there are buffered frames at the access point).

Preamble Type

There are two preamble types defined in IEEE 802.11 specification. A long preamble basically gives the decoder more time to process the preamble. All 802.11 devices support a long preamble. The short preamble is designed to improve efficiency (for example, for VoIP systems). The difference between the two is in the Synchronization field. The long preamble is 128 bits, and the short is 56 bits.

WPA2

It is the second generation of WPA. WPA2 is based on the final IEEE 802.11i amendment to the 802.11 standard.

Temporal Key Integrity Protocol (TKIP)

The Temporal Key Integrity Protocol, pronounced tee-kip, is part of the IEEE 802.11i encryption standard for wireless LANs. TKIP is the next generation of WEP, the Wired Equivalency Protocol, which is used to secure 802.11 wireless LANs. TKIP provides per-packet key mixing, a message integrity check and a re-keying mechanism, thus fixing the flaws of WEP.

802.1x Authentication

802.1x is a framework for authenticated MAC-level access control, defines Extensible Authentication Protocol (EAP) over LANs (WAPOL). The standard encapsulates and leverages much of EAP, which was defined for dial-up authentication with Point-to-Point Protocol in RFC 2284.

Beyond encapsulating EAP packets, the 802.1x standard also defines EAPOL messages that convey the shared key information critical for wireless security.

Advanced Encryption Standard (AES)

Security issues are a major concern for wireless LANs, AES is the U.S. government's next-generation cryptography algorithm, which will replace DES and 3DES.

One Year Limited Warranty

This device is guaranteed against manufacturing defects for one full year from the original date of purchase.

This warranty is valid at the time of purchase and is non-transferable.

This warranty must be presented to the service facility before any repair can be made.

Sales slip or other authentic evidence is required to validate warranty.

Damage caused by accident, misuse, abuse, improper storage, and/or uncertified repairs is not covered by this warranty.

All mail or transportation costs including insurance are at the expense of the owner.

Do not send any product to service center for warranty without a RMA (Return Merchandise Authorization) and proof of purchase. Ensure a trackable method of delivery is used (keep tracking number).

Warranty is valid only in the country of purchase.

We assume no liability that may result directly or indirectly from the use or misuse of these products.

IMPORTANT

" This warranty will be voided if the device is tampered with, improperly serviced, or the security seals are broken or removed"