

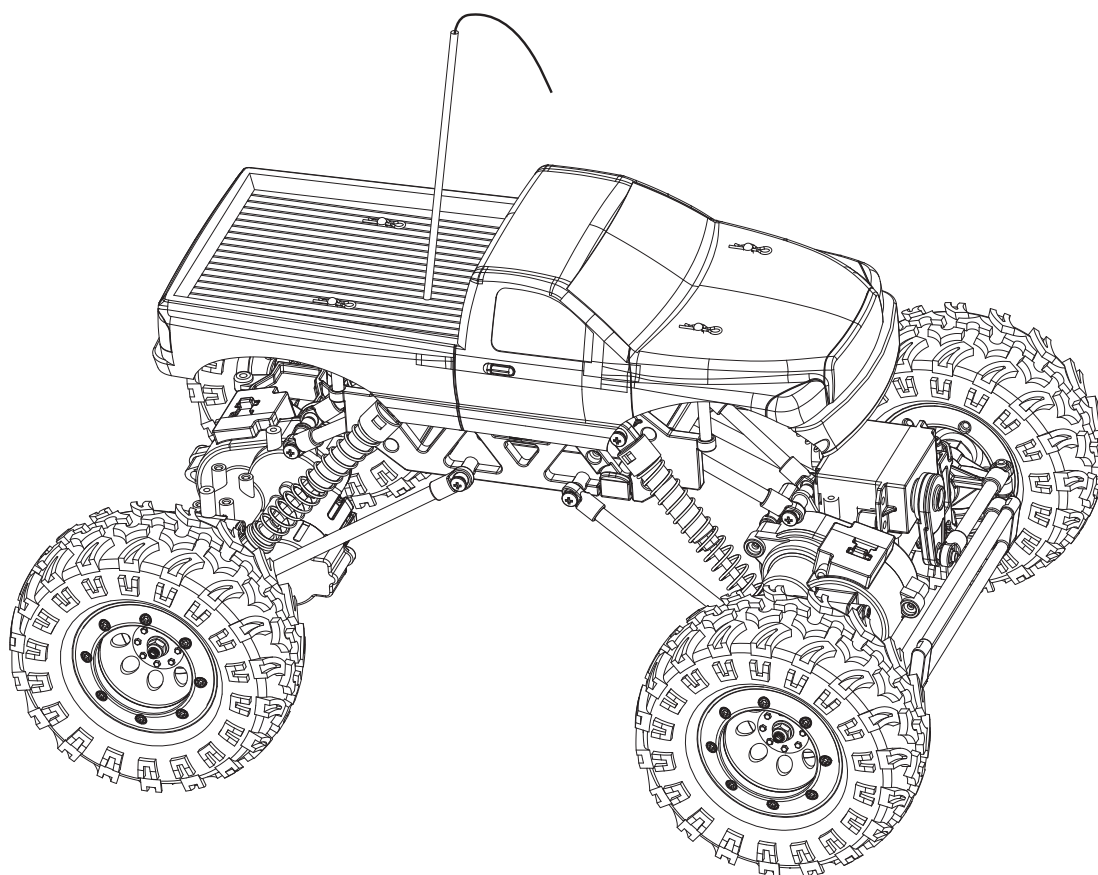


bandai.com

X-CRAWLEE

Asst # 88155 / Item # 88156

Instruction Manual



CAUTION - ELECTRIC TOY:

NOT RECOMMENDED FOR CHILDREN UNDER 8 YEARS OF AGE. AS WITH ALL ELECTRIC PRODUCTS, PRECAUTIONS SHOULD BE OBSERVED DURING HANDLING AND USE TO PREVENT ELECTRIC SHOCK. INPUT: 120VAC, 60HZ, 0.15A



SAFETY GUIDELINES

It is important that you read and understand the instructions completely before use.

Misuse of this product could cause fire or injury.

Please keep this manual and package since it contains important information.

This product is not recommended for use by children less than 15 years of age without adult supervision.

In the event of

- * Smoke
- * Burning smell
- * Strange sound
- * Water or any liquid coming into contact with the product
- * Or if it is dropped or damaged.

----> Remove the battery and contact your supplier.

Please read before use

- * The manufacturer and distributor will accept no responsibility, expressed or implied for injuries caused as a result of dismantling or modification.

The place where you can play.

	CAN PLAY	CANNOT PLAY
Low Gear	Dry asphalt road or ground uphill up to around 30 degree On rocks or gap around 10cm	On wet sand or mud In puddles On deep sand On long grass
High Gear	Dry asphalt road or ground Flat place	On wet sand or mud In puddles On deep sand On long grass On rough ground

- * When using in an unstable place, such as rocks, always pay attention that the car does not overturn.

Attention during use

- * Any water ingress or moisture may cause damage or malfunction. Do not use in the rain or expose equipment to water.
- * Always drive an RC car with care and do not use in:
 1. Crowded places, near other people, especially small children.
 2. a place where there is another RC or similar transmitter nearby which could cause interference.
 3. Confined spaces. In the wet, in fog or at night time.
 4. Never operate when tired, sick, taking medication, under influence of alcohol or any other condition which may affect your ability to control the model.
- * Always turn on the TX first and then the power to the car.
- * Reverse this procedure when turning off i.e. turn off the car and then the TX.
- * Never lose sight of your model which could result in damage or injury.

To avoid unexpected accident, pay attention as below.

- * Do not play in the street or crowded place.
- * If there is thunder, please stop playing immediately. RC system attracts lightning bolt.
- * Do not hit or damage the car.
- * Be careful not to break furniture if you play indoors.
- * Do not bend the antenna. If antenna is broken it may cause injury.
- * Be careful not to trap finger, hair or clothes in the wheel or moving points.
- * This radio system should only be used in a radio control car

Attention after use

- * Do not keep your car
 1. In an extremely hot or cold place (more than 40°C/104°F, less than -10°C/14°F)
 2. In direct sunlight
 3. Humid atmosphere
 4. Avoid excessive vibration
 5. Dusty environment
- * Exposing this car to such conditions, may cause damage, degradation or malfunction.
- * Keep the car away from children.

Essential information regarding batteries

- * When not in use always disconnect batteries. Leaving batteries connected can be very dangerous resulting in explosion or fire.
- * Never short-circuit the connector terminal. This can cause explosion or fire.
- * Only charge batteries with their own charger.
- * Do not dismantle batteries. Batteries contain dangerous chemicals.
- * Do not immerse batteries in water.
- * Always ensure correct polarity.
- * Note that alkaline batteries cannot be recharged. Make sure that batteries are rechargeable items before you charge them.
- * Do not mix different types of batteries.
- * Be careful of the sharp edges inside the battery box.
- * Exhausted batteries are to be removed from the toy.
- * Only batteries of the same type as recommended are used.

In case of battery leakage

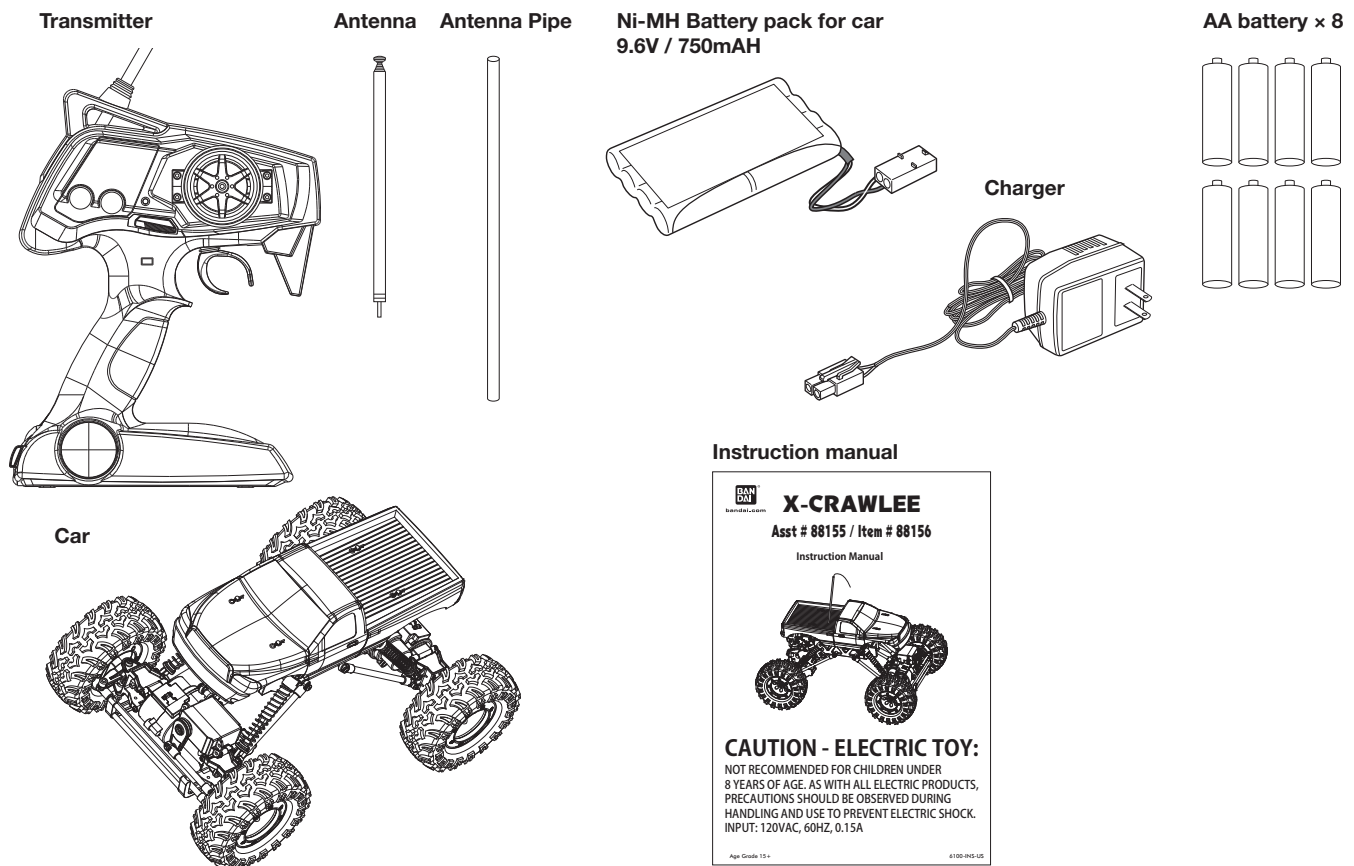
Avoid eye contact, which may cause blindness. Rinse eyes immediately with water and consult your doctor.

Battery disposal

Do not dispose the battery with other general garbage. Disposal should be in accordance with your Country's regulation.

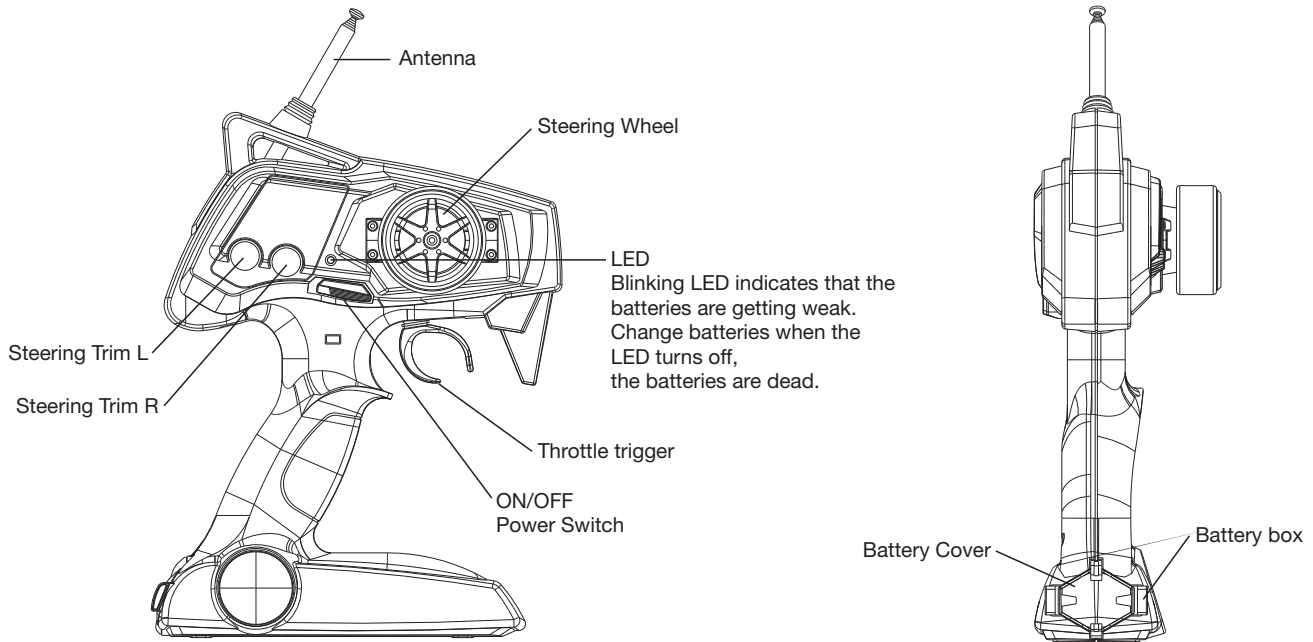
- * Isolate battery terminals with insulating tape before disposal. Rechargeable batteries must be recycled.
- * Please note that short-circuiting batteries can cause fire or electric shock.

CONTENTS OF THE KIT



TRANSMITTER

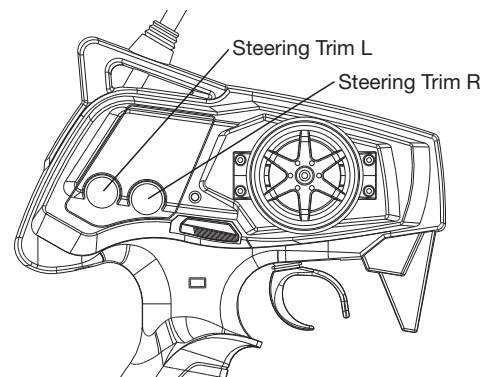
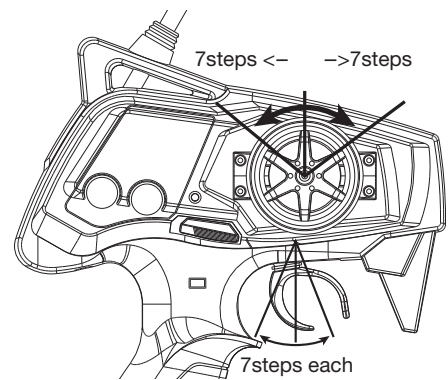
Transmitter other than the one included cannot be used with this product.



FEATURES OF TRANSMITTER

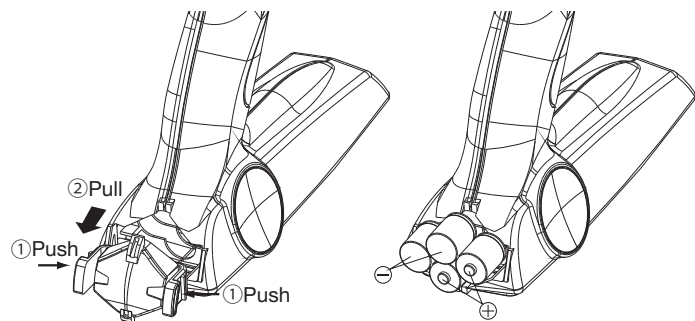
Steering Wheel
Steering wheel rotates 7steps each to right and left.

Throttle Trigger
Throttle Trigger moves up 7 steps each to forward and backwards.



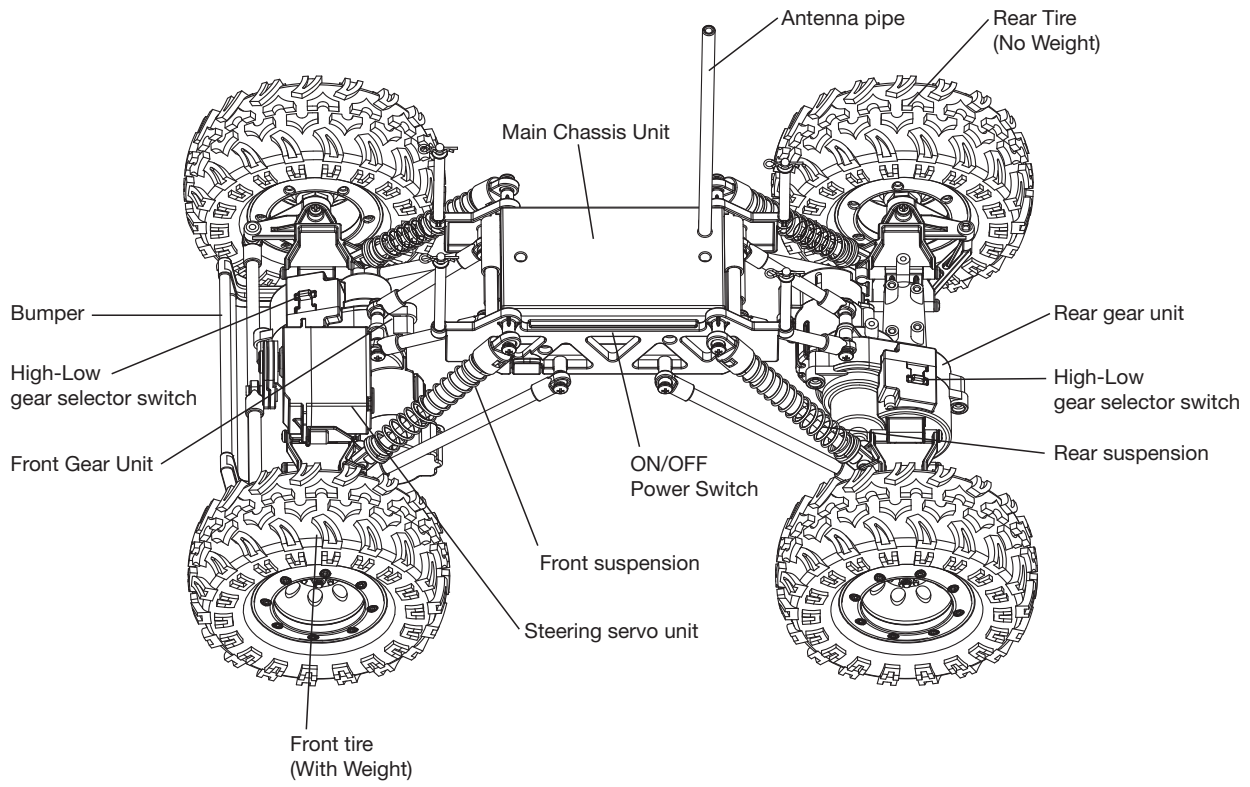
HOW TO CHANGE TRANSMITTER BATTERIES

- * To remove the battery cover, push both of the tabs towards the centre, and then pull the cover. Please be careful that batteries may pop out when the cover is opened.
- * If the transmitter voltage indicator fails to register, check the contacts, especially the negative (-) terminals and recheck that batteries are fitted correctly.
- * Different types of batteries or new and used batteries are not to be mixed.

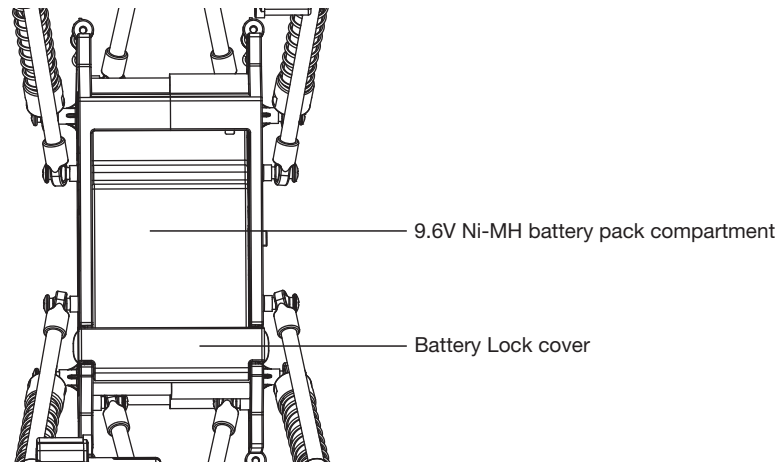


CAR

Front side of the car



Under side of the car

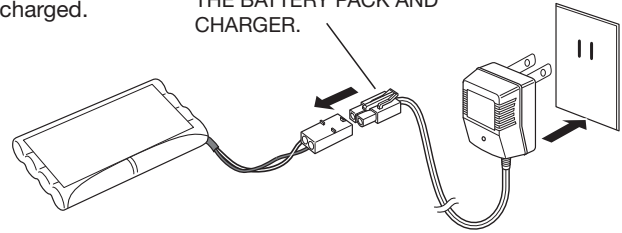


START-UP

HOW TO CHARGE THE BATTERY

1. Rechargeable batteries are to be removed from the car before being charged.
2. Tightly connect 9.6V battery pack and the charger.
3. Plug into standard outlet.
4. It will take about 4 hours to fully charge the battery pack.
 - * Please do not charge the battery for more than 4 hours.
5. After charging the battery for 4hrs, remove the charger from the outlet and disconnect the charger and the battery pack

PUSH THE CLIP ON TOP OF THE CONNECTOR TO CONNECT, DISCONNECT THE BATTERY PACK AND CHARGER.



CHARACTERISTIC OF RECHARGEABLE BATTERY

The battery may wear out its power easily under circumstance as below.
The product comes with the battery in an uncharged state.
Not using the product for a long time will cause the battery to go flat.
In this case, please charge the battery pack, and drive the car until it stops then recharge the battery. In this way capacity will become stable and can play without problem.

- ** Non-rechargeable batteries are not to be recharged.
- ** Rechargeable batteries are only to be charged under adult supervision.
- ** Charger used with the toy are to be regularly examined for damage to the cord, plug, enclosure and other parts, and that, in the event of such damage, the charger must not be used until the damage has been repaired.

CAUTION:

- * The charger included in this product is solely to charge the battery pack included in the product. Do not use for other purpose.
- * 9.6V battery pack included in the product is not fully charged. Charge the battery pack before playing with the car.
- * Battery and charger will be warm during charging.
- * Make sure the battery has been discharged before charging it
- * Charge the battery under constant supervision. Never leave it unattended in case of fire

- * Charge the battery pack according to the instruction.
- * Please set + & - correctly.
- * After playing, always remember to switch off and remove the battery pack from the car.
- * Please do not use, charge and keep the battery near fire, at high temperature or high humidity place.

Miss use of the charger, can cause serious accident such as fire or electric shock.
Pay attention as below.

- * Be careful for electric shock. Do not touch the charger with wet hands.
- * Always unplug from mains after use.
- * Carefully detach the battery from charger holding both sides of the connector
- * Please do not mix with other wiring.

Installation of antenna

Thread the antenna cord through the antenna pipe and put the antenna pipe into the antenna foot on the chassis.

