



Wee Hear™ DECT 1.9 Ghz Digital Audio Monitor

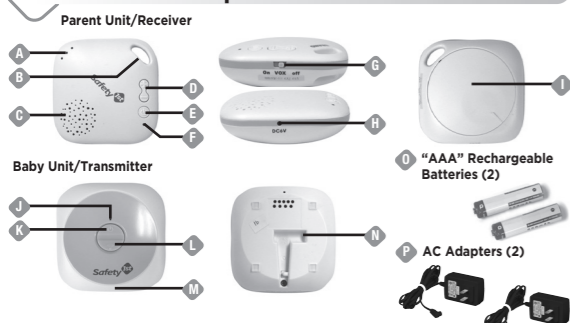
Thank you for purchasing a Safety 1st product. We are not only about safety, we're also about your satisfaction. If you have any questions or comments, please call our Consumer Relations department at 1-800-544-1108 or e-mail us at consumer@safety1st.com

Please read the following instructions and warnings carefully. Keep these instructions for future reference.

WARNING!

Possible entanglement injury. Keep out of baby's reach. NEVER place Baby Unit or cords within 6 feet of the crib. Do not use with an extension cord. Only use the AC adapters provided.

Features & Components



Parent Unit (Receiver)

- A Sound Lights (3 LEDs)
- B Carry Loop
- C Speaker
- D Volume +/- Buttons
- E Power On/Off Button
- F Power On/Link/Low Battery Indicator
- G VOX Switch (background noise elimination)
- H AC Adapter Jack
- I Battery Compartment (2 AAA rechargeable batteries, included)

Baby Unit (Transmitter)

- J Power On/Link Indicator
- K Power On/Off Button
- L Pager Button
- M Microphone
- N AC Adapter Jack

Rechargeable Batteries

- O AAA Rechargeable Batteries (2)

AC Adapters

- P AC Adapters (2)

Battery Installation & Use

CAUTION!

- **DO NOT** mix old and new batteries.
- **DO NOT** mix alkaline, standard (carbon zinc), or rechargeable (nickel-cadmium) batteries.
- Non rechargeable batteries are not to be recharged.
- Rechargeable batteries are only to be charged under adult supervision.
- Only batteries of the same or equivalent type as recommended are to be used.
- Batteries are to be inserted with the correct polarity.
- Exhausted batteries are to be removed from the unit
- The supply terminals are not to be short-circuited.
- Check that all contact surfaces are clean and bright before installing batteries.
- Keep batteries out of child's reach. Swallowing a battery could be fatal.
- Used batteries should be disposed of properly.
- Do not dispose of batteries in fire - they may explode or leak and cause injury.
- Remove batteries when stored for long periods of non-use.
- **DO NOT** use audio monitor system in portable mode when batteries are low.
- Ensure that the battery compartment is completely secure after replacing batteries.

BATTERY INSTALLATION:

1. Remove the battery compartment cover from the parent unit.
2. Insert 2 AAA rechargeable batteries (included).
Make sure batteries align properly to the correct positive "+" and negative "-" polarity marked in the battery compartment.
3. Replace the battery compartment cover.

Safety Instructions

IMPORTANT:

- Check the reception regularly.
- Certain electronic devices are sensitive to magnetic fields and may be damaged permanently or temporarily disabled if exposed to a magnetic field that is too strong.
- To remove AC adapter from the outlet, firmly grasp the adapter "brick." **DO NOT** pull on the cord, as this could damage it.
- The LEDs emit IR (infra red) light that is not harmful.

WARNING!

For indoor use only. To reduce the risk of fire or electrical shock, do not expose this product to water or moisture. NEVER attempt to disassemble the product. This is dangerous and will void the warranty.

CAUTION!

This monitor is not intended to be used as a medical monitor and its use should not replace proper adult supervision. You should check your child's activity at regular intervals as this monitor will not alert parents to the silent activities of a child.

It is essential to check reception regularly. Please see Use and Care section.

VENTILATION: The Monitor should not be situated on a bed, sofa, rug, or similar surface that may block the ventilation openings, or placed in an enclosed installation, such as a book case or cabinet that may impede the flow of air through the ventilation openings.

- Position the Transmitter, Receiver and AC adapters to allow adequate ventilation and prevent these components from overheating.

HEAT: The Monitor should be situated away from heat sources such as radiators, heat registers, stoves, or other appliances that produce heat. Also keep these components out of direct sunlight.

POWER SOURCE: The Monitor should be connected to a power supply only of the type described in these operating instructions.

POWER CORD PROTECTION: The power supply cord should be routed so that it is not likely to be walked on or pinched by items placed upon or against it. Pay particular attention to the cord at the plug, convenience receptacle, and at the point it exits from the Monitor. **NOTE: Do not place adapter under a window where a child might use it to step on and reach something that might be dangerous.**

- Check to make sure outlet plates are not unusually hot to the touch. If they are, immediately unplug cords from these outlets. Check that all outlet connections are in good condition so that adapter is not loose or that no wiring is exposed. Have a qualified, licensed electrician check the wiring as soon as possible.

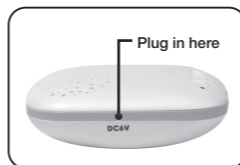
OBJECT AND LIQUID ENTRY: Care should be taken so that objects do not fall onto, and liquids are not spilled into the enclosure through the openings.

DAMAGE REQUIRING SERVICE: The Monitor should be serviced by qualified service personnel when:

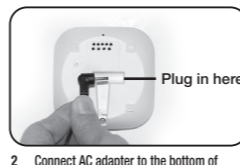
- A. The power supply cord has been damaged; or
- B. Objects have fallen or liquid has been spilled into the product; or
- C. The Monitor has been exposed to rain; or
- D. The Monitor does not appear to operate normally or exhibits a marked change in its performance; or
- E. The Monitor has been dropped or the enclosure damaged.

THE USER SHOULD NOT ATTEMPT TO SERVICE OR REPAIR THE MONITOR. ALL SERVICING SHOULD BE REFERRED TO SAFETY 1ST CUSTOMER SERVICE DEPARTMENT: (800) 544-1108.

Quick Start Guide



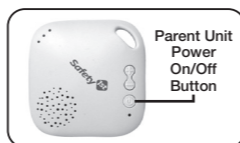
1 Connect AC adapter to the side of Parent Unit.



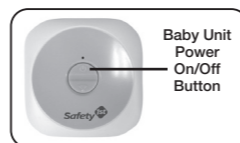
2 Connect AC adapter to the bottom of Baby Unit.



3 Plug Parent Unit and plug Baby Unit into wall to operate AC power.



4 Hold down Power On/Off Button to turn Parent Unit on. To turn off Parent Unit, hold down Power On/Off Button again.



5 Hold down Power On/Off Button to turn Baby Unit on. To turn off Baby Unit, hold down Power On/Off Button again.

Using Your Monitor

DO NOT PLACE UNITS IN CRIB OR MOUNT ON CRIB. KEEP OUT OF REACH OF CHILDREN.

AC ADAPTER

The Parent Unit operates on household electricity with the AC Adapter or with 2 AAA rechargeable batteries (included). The Baby Unit operates on household electricity with the AC Adapter only. The Parent Unit will automatically convert to AC operation when used with the AC Adapter. It is not necessary to remove the battery during AC operation. The Parent Unit will automatically switch back to battery power when plug is disconnected from the AC Adapter.

The AC Adapter should be used whenever possible on the Parent Unit to save battery life. This is done by inserting the AC Adapter into the AC Adapter jack. Then simply plug the AC Adapter into a nearby standard household outlet (120V AC outlet). The AC Adapters may become slightly warm to the touch during operation. This is normal.

This AC Adapter is a low voltage power source which allows you to use your household electricity to run the Baby and Parent Units when it connects to the AC Adapter jack in the Parent Unit and in the Baby Unit, and plugs into any standard electrical outlet in your home.

To remove AC adapter from the outlet, firmly grasp the adapter "brick." **DO NOT** pull on the cord, as this could damage it.

CAUTION: This AC Adapter was made with a specific design for the Safety 1st Monitor. It cannot be used with any other appliance, and never use a different type of adapter with this Monitor.

Parent Unit (Receiver):

POWER INDICATOR

The power indicator is a green LED that indicates that the unit is on and functioning.

LOW BATTERY INDICATOR

Low battery power is indicated by the blinking red LED, which signals when the batteries need to be replaced. When batteries are charging, LED appears solid red.

LINK INDICATOR - OUT OF RANGE

The link/out of range indicator is a blinking green LED, which means contact is lost between the Baby and Parent Units. Static noise will be heard if both units are too far apart.

SOUND LIGHTS

As baby's voice gets louder, the sound light red LEDs will illuminate from bottom to top. Low sound is one LED illuminated and rises incrementally as baby's noise level increases until all 3 LEDs are illuminated.

SPEAKER

The speaker picks up sounds from the Baby Unit's microphone. The speaker will continuously beep as a warning signal when contact is lost between the Baby and Parent Units. The speaker will emit short beeps as a warning signal when rechargeable batteries are low. The short beeps will stop when batteries are recharging.

POWER ON/OFF BUTTON

Press and hold down the Power On/Off Button to turn Parent Unit on. To turn off Parent Unit, hold down Power On/Off Button again.

VOLUME (+/-) BUTTONS

Volume can be easily adjusted to any desired listening level by pressing the + and - Volume Buttons, so you can be sure to hear your baby at all times. The sounds are transmitted through the wide range speaker. It is essential to check reception regularly. Refer to Use and Care section.

Using Your Monitor (continued)

VOX SWITCH (Background Noise Elimination)

Slide VOX switch to the On position. The Baby Unit will operate in voice activated mode (also known as background noise elimination), which means the speaker will only turn on when it picks up higher level sounds from the Baby Unit's microphone. Slide VOX switch to the Off position to turn off background noise elimination mode.

CARRY LOOP

The Carry Loop is convenient for portability. Using a carabineer through the carry loop, you can clip the Parent Unit to your belt loop after rechargeable batteries have been installed.



Baby Unit (Transmitter):

PROPER POSITIONING

IMPORTANT: When choosing locations to set up the Baby Unit and Parent Unit, follow these guidelines:

- For best sound quality, place Baby Unit 6 feet (2 meters) away from the baby.
- Adjust volume (+/-) buttons on Parent Unit to appropriate level to minimize feedback.
- During use of the monitor, sound quality deteriorates as you reach the limits of the monitor's range. If this happens, you will need to move the Parent Unit in closer proximity to the Baby Unit.
- Adjust the volume to a comfortable level for your environment.

POWER INDICATOR

The power indicator is a green LED that indicates that the unit is on and functioning.

LINK INDICATOR - OUT OF RANGE

The link/out of range indicator is a blinking green LED, which means contact is lost between the Baby and Parent Units.

POWER ON/OFF BUTTON

Press and hold down the Power On/Off Button to turn Baby Unit on. To turn off Baby Unit, hold down Power On/Off Button again.

MICROPHONE

The microphone transmits sounds to the speaker on the Parent Unit.

PAGER BUTTON

The Pager Button is helpful to locate a misplaced Parent Unit. With the Baby Unit on, press the pager button on the Baby Unit. Any button press on the parent unit will turn off pager beeper. **NOTE:** The Parent Unit will only beep if it is powered on.

Troubleshooting

IF YOU ARE STILL HAVING PROBLEMS, PLEASE CALL TOLL FREE FOR HELP! (800) 544-1108.

PROBLEM	POSSIBLE CAUSE	SOLUTION
Power indicator light not working	Power is not getting to the Unit	Make sure wall outlet is working; may possibly need to be turned on by a switch Make sure AC adapter is plugged into wall and the Unit
Parent's Unit has no sound Volume is too low	Out of range Adjust the volume	Bring Parent's Unit closer to Baby's Unit
Static or interference in the signal transmission	Appliances with loud fans near Units may be blocking transmission Unit may be under fluorescent lights Local interference from electrical or radio frequency appliance near your location	Look for any noise source in baby's room. Remove noise source or move Baby Unit away from the source Reduce the distance between the two Units or turn off lights Turn off the appliances that may be causing interference
Parent Unit is making loud noises	Units are too close together Volume on Parent Unit may be too high	Parent Unit needs to be at least 10 feet / 3 meters away from the Baby Unit Turn down volume on the Parent Unit
Weak sound coming from Parent Unit	Battery may be weak Units may be too far away from each other	Check battery; recharge if necessary Move the Units closer to each other
Can't hear baby's sounds	Volume may be too low	Press the Volume + Button to turn up volume

FCC Statement

Radio and Television Interference

Note: This equipment has been tested and found to comply with the limits for a class B digital device, pursuant to part 15 of the FCC Rules and applicable Industry Canada specifications. These Limits are designed to provide reasonable protection against harmful interference in a residential installation. For body worn operation, this product has been tested and meets the FCC RF exposure guidelines when used with the belt clip supplied or designed with this product. Use of other accessories may not ensure compliance with the FCC exposure guidelines.

This device complies with part 15 of the FCC Rules. Operation is subject to the following two conditions: (1) this device may not cause harmful interference, and (2) this device must accept any interference received, including interference that may cause undesired operation.

This equipment generates, uses and can radiate radio frequency energy and, if not installed and used in accordance with the instructions, may cause harmful interference to radio or television communications. However, there is no guarantee that interference will not occur in a particular installation. If this equipment does not cause harmful interference to radio or television reception, which can be determined by turning this equipment off and on, the user is encouraged to try to correct the interference by one or more of the following measures:

- Reorient or relocate the receiving antenna
- Increase the separation between the equipment and the receiver
- Connect the equipment into an outlet on a circuit different from that to which the receiver is connected.
- Consult the dealer or an experienced radio/TV technician for help.

WARNING: Changes or modifications not expressly approved by Dorel Juvenile Group can void your authority to operate this equipment under the Federal Communications Commission rules.

This Category II radiocommunication device complies with Industry Canada Standard RSS-310.

Ce dispositif de radiocommunication de catégorie II respecte la norme CNR-310 d'Industrie Canada.

Helpful Hints

Use household electricity whenever possible. When the AC Adapter is used with your household electricity, you will find that the power is stronger and more consistent than when you rely solely on the battery. Range and sound quality also depends on the construction of your house. Steel reinforced wall, for example, reduces the effective range of the monitor. Conserve the battery so you will have power when you don't have easy access to AC outlets.

When not using the Unit, remove AC Adapter and be sure the power button is "OFF".

When you are not using the AC Adapter, remove it from the Unit and store it in a safe, dry place until you need it again. If the AC Adapter is plugged into the Parent Unit but not being used in an electrical outlet, the AC Adapter will prevent battery operation of the Unit.

When using the AC Adapter with household electricity, make sure the outlet is "ON".

Some electrical outlets are powered through a switch in the room. If the Baby Unit is plugged in and turned "ON", the power indicator light should be lit. If it is not, try turning the light switch in the room "ON".

Use and Care

IMPORTANT - CHECK RECEPTION:

The first time you use your monitoring system, two adults should test it in the following way:

- Place Parent Unit at least 20 ft. (6m) away from Baby Unit.
- Have an adult speak into Baby Unit at various levels (soft to loud) while another adult checks Parent Unit for the proper sound reception.

Try Parent Unit in every location that it will be used.

Care and Cleaning:

Use a soft, dry cloth to keep your monitor free from dust. **DO NOT** immerse product in water.

One (1) Year Limited Warranty

Dorel Juvenile Group, Inc. warrants to the original purchaser that this Wee Hear™ DECT 1.9 Ghz Digital Audio Monitor, is free from material and workmanship defects when used under normal conditions for a period of one (1) year from the date of purchase. Should the product contain defects in material or workmanship Dorel Juvenile Group, Inc., will repair or replace the product, at our option, free of charge. Purchaser will be responsible for all costs associated with packaging and shipping the product to Dorel Juvenile Group Consumer Relations Department at the address noted below and all other freight or insurance costs associated with the return. Dorel Juvenile Group will bear the cost of shipping the repaired or replaced product to the purchaser. Product should be returned in its original package accompanied by a proof of purchase, either a sales receipt or other proof that the product is within the warranty period. This warranty is void if the owner repairs or modifies the product or the product has been damaged as a result of misuse.

This warranty excludes any liability other than that express stated previously, including but not limited to, and incidental or consequential damages.

SOME STATES DO NOT ALLOW THE EXCLUSION OR LIMITATION OF INCIDENTAL OR CONSEQUENTIAL DAMAGES, SO THE ABOVE LIMITATION OR EXCLUSION MAY NOT APPLY TO YOU.

THIS WARRANTY GIVES YOU SPECIFIC LEGAL RIGHTS, AND YOU MAY ALSO HAVE OTHER RIGHTS THAT MAY VARY FROM STATE TO STATE.

Thank you again for purchasing a Safety 1st product. We are not only about safety, we're also about your satisfaction. If you have any questions or comments, please call our Consumer Relations department at 1-800-544-1108 or e-mail us at consumer@safety1st.com.