
User Manual

Table of Contents

1.0 Introduction.....	1
2.0 Specifications.....	1
3.0 Package Contents.....	2
4.0 Panel Descriptions.....	2
5.0 Connection and operation.....	2
6.0 Connection Diagram.....	4

Smart Ball

DEAR CUSTOMER

Thank you for purchasing this product. For optimum performance and safety, please read these instructions carefully before connecting, operating or using this product. Please keep this manual for future reference.

1.0 INTRODUCTION

This product is a shutter remote control through bluetooth 4.0 for taking photo .It needs to connect related APP. It can be used for iPhone/iPad/iPod which requires both Bluetooth 4.0 and IOS6.0 or later, and Samsung galaxy S4/S3.

1.1 FEATURES

- Simple and Easy Wireless Set-Up.
- Long distances for use, up to 12 meters
- Compatible with mobile phone (iPhone,iPad,iPod,S3,S4) which requires support Bluetooth 4.0, IOS 6.0 or later, Andriod 4.2.X
- Equipment connected to the phone, easy to look for a mobile phone
- Can be used as a remote controller to take photos
- Small and beauty, convenient to carry on with other tiny goods to hang together
- Only need one CR2032 button battery (can use six months to one year), and easy to change.

2.0 SPECIFICATIONS

parameter	Minimum	prototype	maximum
working voltage	+2V	+2.8V	+3.6V
Working current	<=1uA		<=35mA
Working distance			12m
Wireless receiving sensitivity	<=-90dbm		
wireless transmit power			4dbm

Note: Specifications are subject to change without notice.

3.0 Package Contents

Before attempting to use this unit, please check the packaging and make sure the following items are contained in the shipping carton:




- Main unit x1
- User's Manual x1

4.0 PANEL DESCRIPTIONS

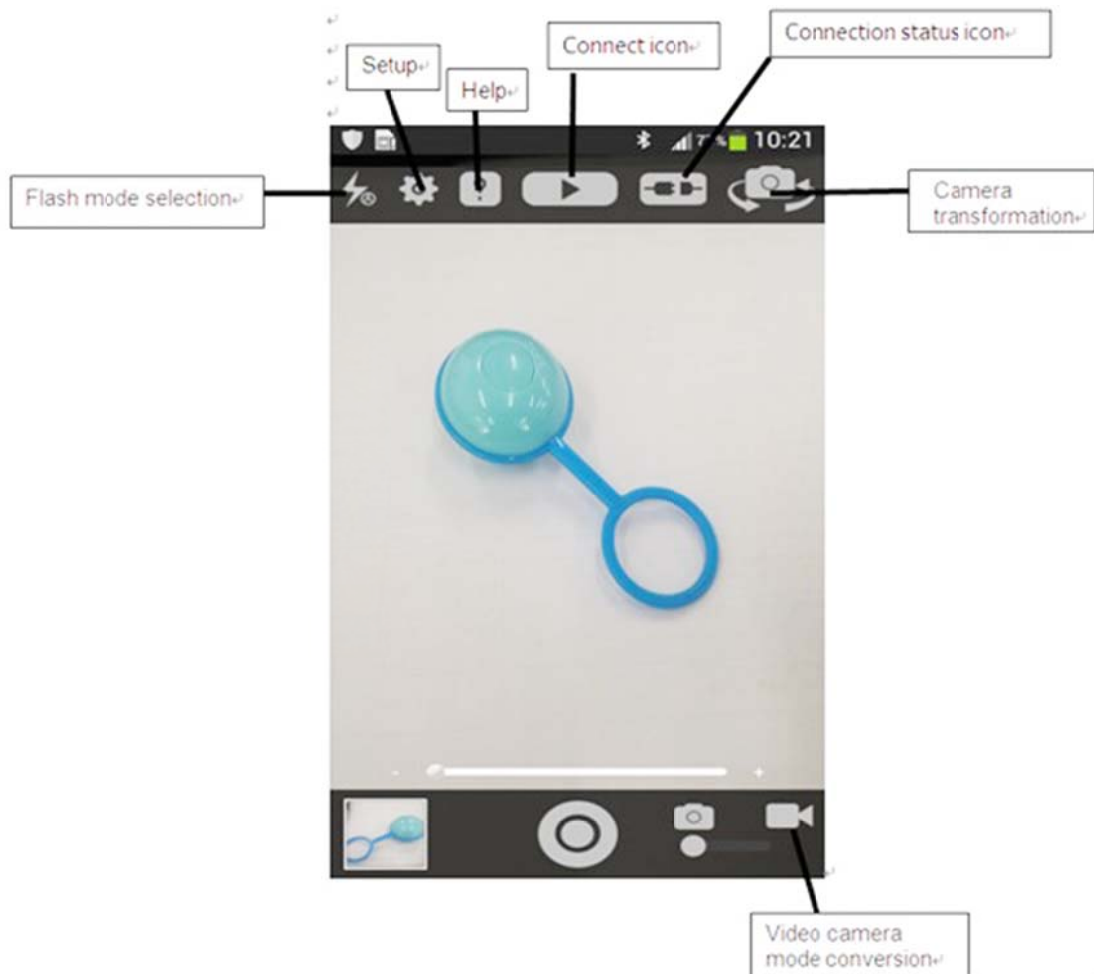


5.0 Connection and operation

Usage method

- After opening Bluetooth of mobile phone, open the APP and select to connect device
- Trigger the Smart Ball, LED lights flickered on at this time, and click "APP" interface connection icon . If the connection is successful, LED flashing stopped, connection icon changes from  to . Connection time is up to 5 seconds every time as the longest time (LED flashes 5 times), if the connection is unsuccessful, it will be long bright 3 seconds after the flashing stopped and then get to sleep mode, and no operation within 20 minutes, the device disconnect automatically; If you want to connect again, click the button once more.

- After entering the application, can operate according to page instruction, select the required function, (such as: take photos, videos, setup the ring tone, adjust the voice, and choose whether vibrate, remove devices, open the alarm or not.)
- Alarm function: Seeking for mobile phone function. When the mobile phone and equipment are in a state of connection, long press the button of device 3 seconds, can trigger cell phone alarm; Repeat this operation or operate APP according to the instruction can stop the alarm



Advantages Description:

- Shutter remote control pictures, video function: when mobile phones connect with the device normally, in special application interface, operating keys on the device can realize shutter remote control for mobile phone to take photo and video recording.
- Search function: when cell phones and the device are in normal connection and does not trigger the alarm, press the button of the device can trigger mobile phones alarm; At this moment, the user can remove alarm through the

mobile phone application operation button or button of the device, this function supports backstage operations

Matters needing attention

Need to download the corresponding APP for matching to use (can only connect one device every time), the APP name for the Samsung mobile phones is smartball and for Apple mobile phones is SmartPhotoBall. There are two versions of the IOS and android applications, users can download through following QR code



Android Client



Apple iOS Client

6.0 CONNECTION DIAGRAM



P/N5061

FCC Warning

This device complies with Part 15 of the FCC Rules. Operation is subject to the following two conditions:

(1) This device may not cause harmful interference, and (2) this device must accept any interference received, including interference that may cause undesired operation.

NOTE: Any changes or modifications to this unit not expressly approved by the party responsible for compliance could void the user's authority to operate the equipment.