

ZoomGo Media Stick

ZX10



GETTING STARTED WITH ZoomGo

Wireless in-car entertainment

Welcome!

We're glad to have you with us.

ZoomGo offers whole new way to enjoy and share your favorite shows and movies. As you go through this guide, you'll discover how to make the most of the device and the PlayOn platform.

We've worked hard to find the best way to merge your favorite streaming services and let you enjoy that content wherever you are, whether connected or not.

We hope you enjoy using ZoomGo as much as we enjoyed designing it.

ZoomGo Media Stick
Model: ZX10
FCC ID: A4XZX10



www

www.zoomgo.tv

?

www.zoomgo.tv/support

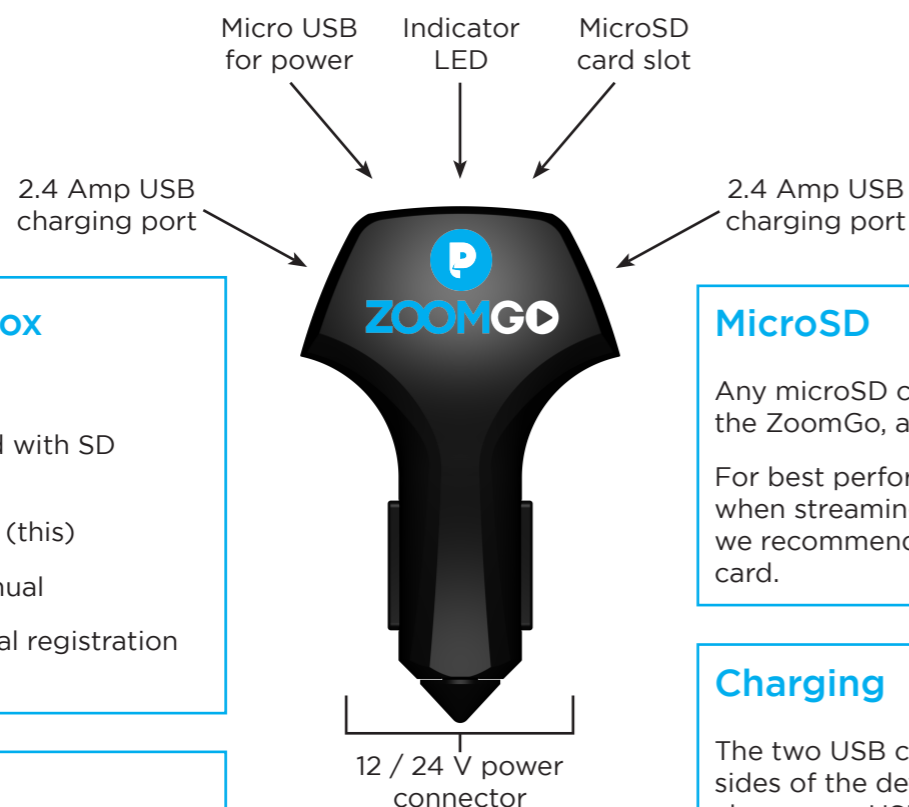


/ZoomGoMedia

©

Copyright ZoomDigital Limited

THE HARDWARE



What's in the box

- ZoomGo Stick
- 8GB MicroSD card with SD adapter
- Quick Start Guide (this)
- Warranty and Manual
- 15 days PlayOn trial registration code

Power

The 12 / 24 V power connector can be used in cigarette lighter power sockets in any vehicle, be it in your car, caravan, truck or RV.

For places without such a socket, you can just use a Micro USB cable to power the stick. It can be powered from any phone or tablet wall adapter, power bank, or even from your laptop (as long as the port can deliver enough juice). In this mode the USB charging ports are disabled.

MicroSD

Any microSD card can be used with the ZoomGo, and up to any capacity! For best performance, especially when streaming to multiple devices, we recommend using a fast microSD card.

Charging

The two USB charging ports on the sides of the device can be used to charge any USB-powered device.

Tablets, smartphones, cameras, power banks and even more can be charged quickly and efficiently.

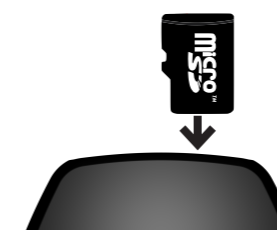
2.4 Amps of current is sufficient to charge even the highest capacity devices quickly, in some cases quicker than a wall adapter.

The USB ports will deliver the right amount of current for whatever device is connected, so there is no risk of damage.

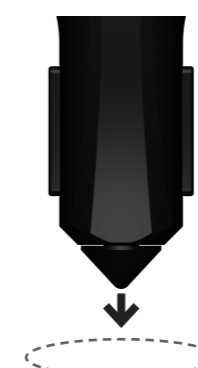
POWERING ON

Using ZoomGo is easy

1. Start by downloading the ZoomGo Media app from either Google Play or the iOS App Store.
2. Insert the MicroSD card into the slot at the top of the ZoomGo stick.



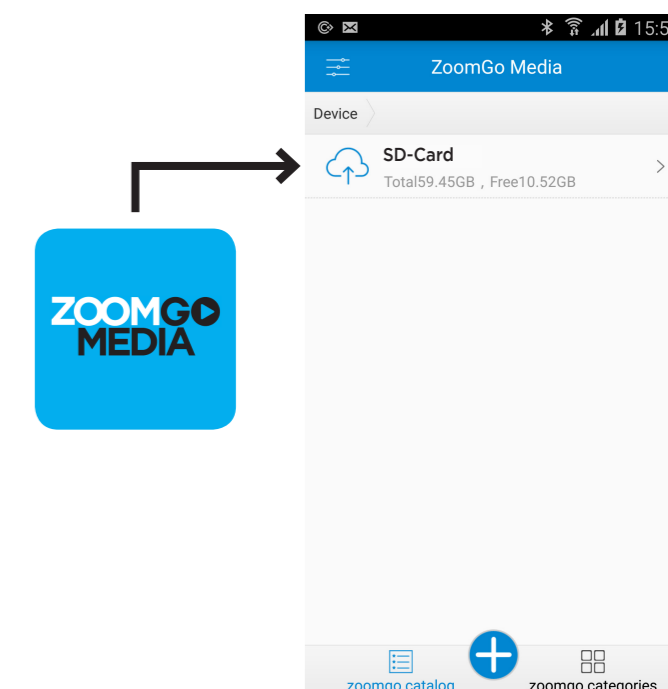
3. Plug the stick into the 12 / 24 V power socket in your vehicle (it can also be powered via Micro USB).
4. The stick will start up, showing a solid LED indicator light. During WiFi activity, the LED indicator light will flash.



5. On your phone or tablet, connect to the ZoomGo-XXXX WiFi network. You can add a password in the Settings portion of the ZoomGo app.



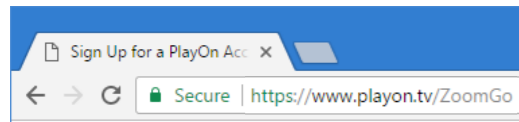
6. Open the ZoomGo app, tap SD-Card, and the contents of the microSD card will appear.



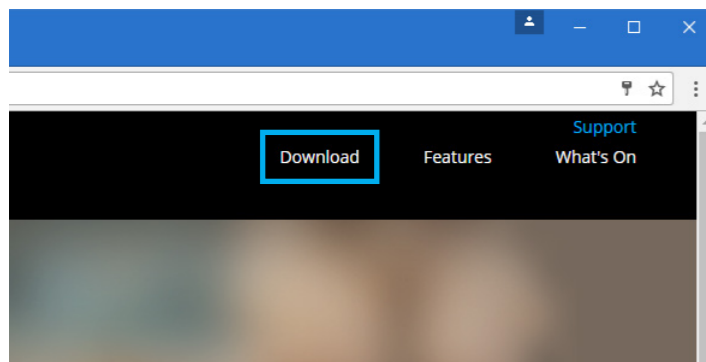
USING PLAYON

Licensed content for ZoomGo is provided via the PlayOn Service

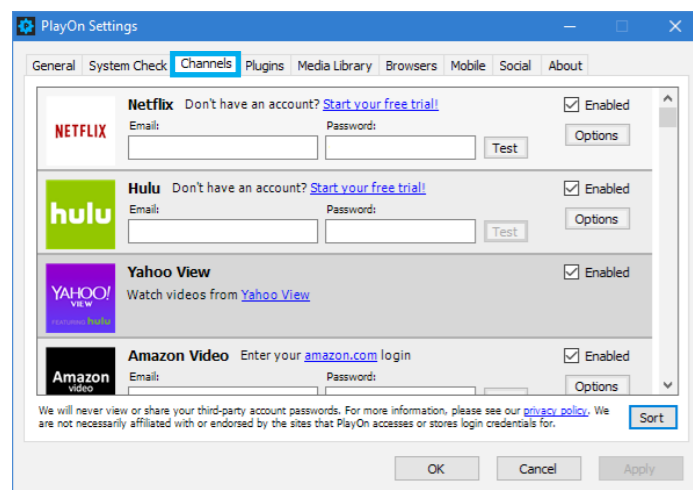
1. On your Windows PC, open your web browser and go to www.PlayOn.tv/ZoomGo



2. Create your account and sign in
3. Follow the instructions on the PlayOn website
4. Click Download in the top menu of the PlayOn website and install the software

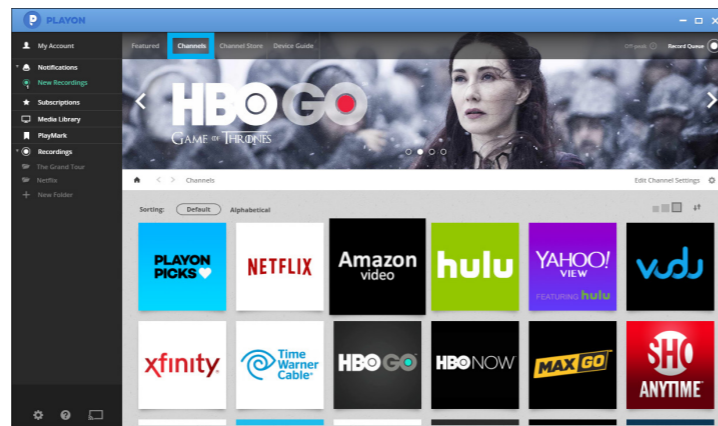


5. Open PlayOn, click on Channels at the top, and click on Edit Channel Settings on the right side to log into each of your streaming services (make sure you check the Options by each one, as some settings are regional), then click OK

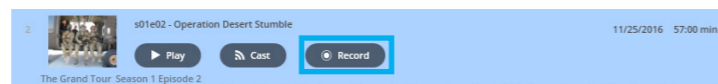


For more information on how to use PlayOn, visit: <https://www.playon.tv/support>

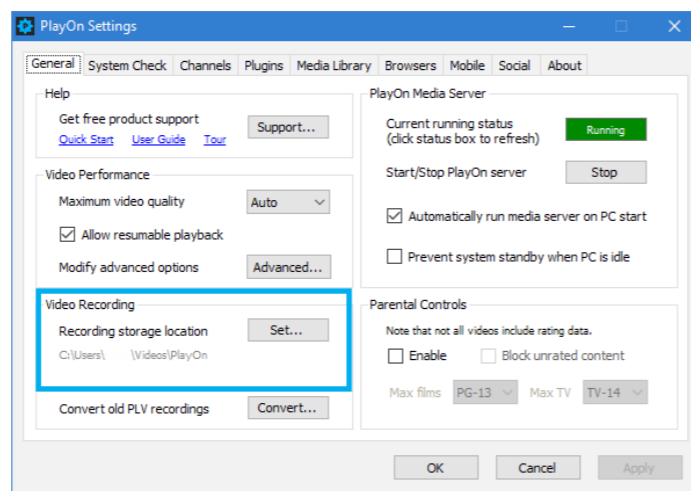
6. Now you can select a streaming service and then search for a program



7. Click on the episode you want to record, and click the Record icon to start a recording of this program



8. Once recorded, you can navigate to your PlayOn Recordings folder, which is set by default to My Videos\PlayOn



9. Using the MicroSD card and included adapter, plug these into the SD card reader on your PC, and move the desired recordings from the PlayOn folder to the SD card.

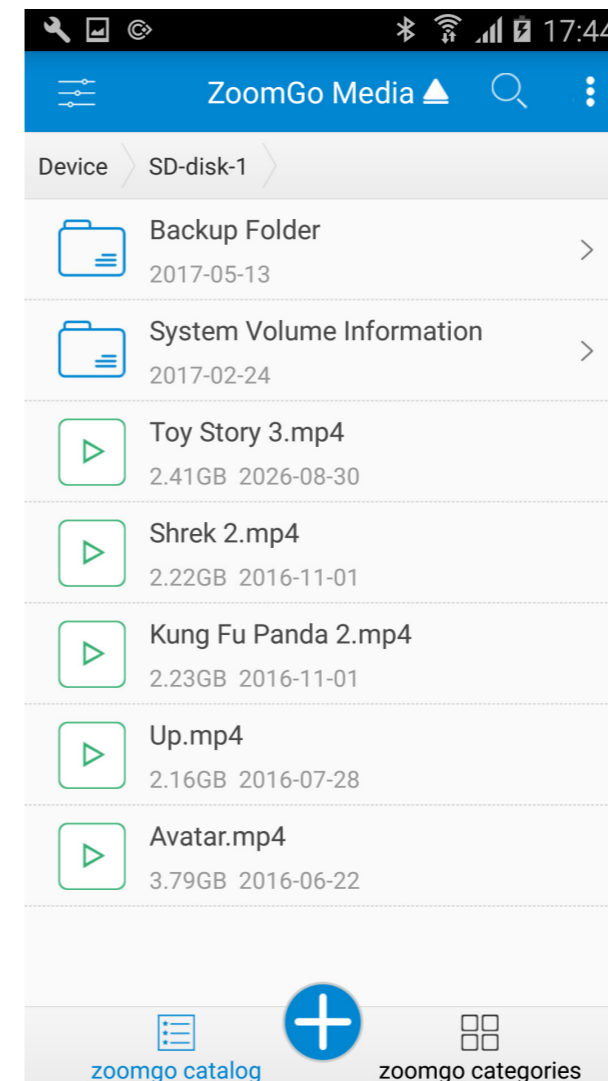
THE APP

Using the ZoomGo app to watch content

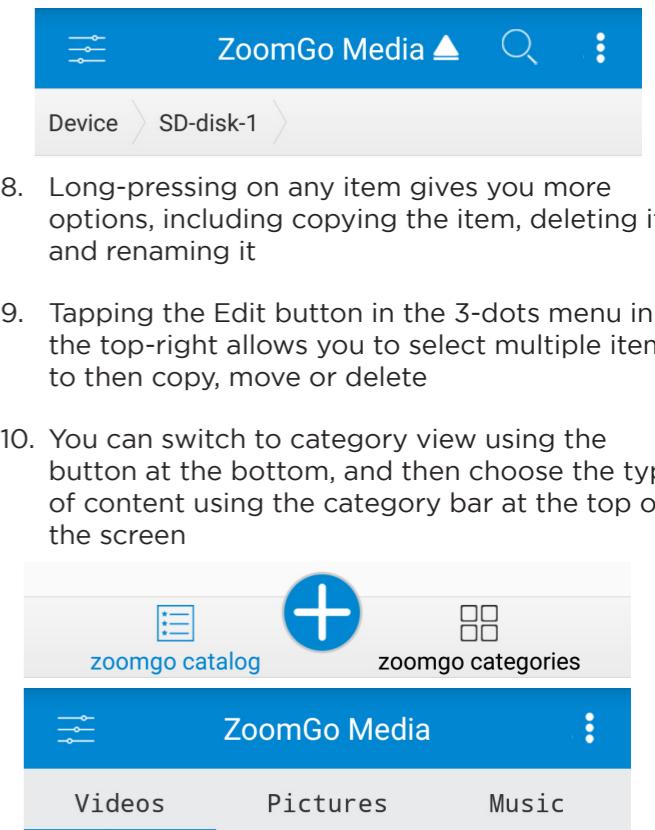
1. Connect to the ZoomGo-xxxx WiFi network
2. Open the ZoomGo Media app on your mobile device



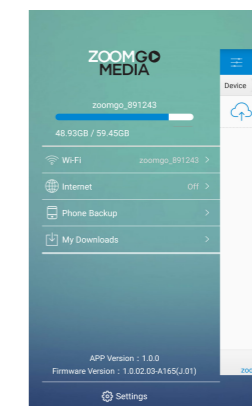
3. The app will now display a list of files and folders on the stick
4. Open the SD-Card folder to see the contents on the microSD card
5. You can tap on a folder to view its contents, and tap on a file to open it. You can also search for a file using the search icon in the top-right



6. Your content will begin to play automatically. The app comes with a built-in player that supports most common formats
7. To go up a level in the folders, use either the hardware Back button, or the breadcrumb menu in the top-left
8. Long-pressing on any item gives you more options, including copying the item, deleting it and renaming it
9. Tapping the Edit button in the 3-dots menu in the top-right allows you to select multiple items to then copy, move or delete
10. You can switch to category view using the button at the bottom, and then choose the type of content using the category bar at the top of the screen



11. Using the button in the top-left to access the main menu, you can see which WiFi network you are connected to, check storage capacity and backup your device's data to the Stick.
12. From here you can access the Settings panel, where you can change the Stick's WiFi name and password, set a password for the content on the device and configure advanced settings.



For more information, tips, features or to get in touch with us, visit:

<https://www.zoomgo.tv/support>

This equipment has been tested and found to comply with the limits for a Class B digital device, pursuant to part 15 of the FCC Rules. These limits are designed to provide reasonable protection against harmful interference in a residential installation. This equipment generates, uses and can radiate radio frequency energy and, if not installed and used in accordance with the instructions, may cause harmful interference to radio communications. However, there is no guarantee that interference will not occur in a particular installation. If this equipment does cause harmful interference to radio or television reception, which can be determined by turning the equipment off and on, the user is encouraged to try to correct the interference by one or more of the following measures:

- Reorient or relocate the receiving antenna.
- Increase the separation between the equipment and receiver.
- Connect the equipment into an outlet on a circuit different from that to which the receiver is connected.
- Consult the dealer or an experienced radio/TV technician for help.

Caution: Any changes or modifications to this device not explicitly approved by manufacturer could void your authority to operate this equipment.

This device complies with part 15 of the FCC Rules. Operation is subject to the following two conditions: (1) This device may not cause harmful interference, and (2) this device must accept any interference received, including interference that may cause undesired operation.

The device has been evaluated to meet general RF exposure requirement.

This equipment complies with FCC radiation exposure limits set forth for an uncontrolled environment.

This equipment should be installed and operated with minimum distance 20cm between the radiator & your body.