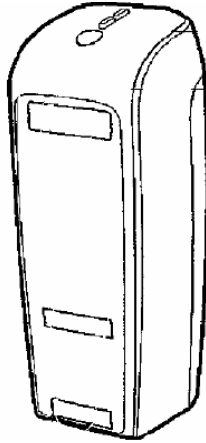




CL850 Manual



Safety Precautions

- Avoid long time expose to the direct light or heat.
- Faults may occur if kept in extreme of temperatures.
- May become damaged if dropped or knocked.
- Problems may occur if exposed to humid and/or dusty conditions.
- Do not use if power cable or plug are damaged.
- Use only dedicated cable/adapter.
- Do not disassemble.
- Do not look directly at the light source, as this can cause damage to the eye.

Regulatory Information

FCC compliance Information

This device complies with part 15 of FCC Rules.

Operation is subject to the following two conditions:

1. This device may not cause harmful interference.
2. This device must accept any interference received, including interference that may cause undesired operation.

Information to User

This equipment has been tested and found to comply with the limits for a Class B digital device, Pursuant to part 15 of the FCC Rules. These limits are designed to provide reasonable protection against harmful interference in a residential installation.

This equipment generates, uses and can radiate radio Frequency energy and, if not installed and used in accordance with the instructions, may cause harmful interference to radio communications. However, there is no guarantee that interference will not occur in a particular installation. If this equipment does cause harmful interference to radio or television reception, which can be determined by turning the equipment off and on, the user is encouraged to try to correct the interference by one or more of the following measures:

- Redirect or reposition the receiving antenna
- Increase the separation between the equipment and receiver
- Connect the equipment to a socket on a circuit different from that to which the receiver is connected.
- Consult the dealer or an experienced radio/TV technician for help.

FCC WARNING: This equipment may generate or use radio-frequency energy. Changes or modifications to this equipment may cause harmful interference, unless such modifications are expressly approved in the instruction manual. The user's license to operate this equipment may be revoked if an unauthorized change or modification is made.

RF Exposure Information: The antenna used for this transmitter must not be co-located or operated in conjunction with any other antenna or transmitter.

CE :

EN300328
EN301489
EN60950

Laser Safety:

Product is certified by the manufacturer to comply with DHHS Rules 21 CFR Subchapter J. Applicable at the date of manufacture.

Environmental Notice

This product does not any materials specified harmful to the human body. At the end of this product's service life, please separate with the life waste and discharge or go to the Celluon service center for environmental protection.



Battery Information

Battery service life: 200 minutes continuous use (max)

Capacity: 830mAh (max) @ 3.7V

Charging the Battery

Use the adapter supplied for connection to the power supply. The battery will now start charging.

Charging time: 180 min



Caution

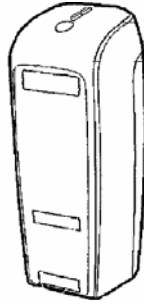
- Use of any other adapter may cause the battery to explode.
 - After purchasing the product, charge the battery before use.
 - Charging time is dependent on ambient temperature i.e. it may be longer or shorter in extreme heat or cold.
 - It is possible that the battery is not fully charged even when the charging indicator is illuminated.
 - Since battery belongs to expendable supplies, service life gradually shortens after several uses.
-

Table Contents

1. FEATURES.....	9
2.PARTS AND THEIR FUNCTIONS	100
3.HOW TO OPERATE.....	111
4.1 IN USB MODE	11
4.2 IN BLUETOOTH MODE.....	11
4. HOW TO INSTALL, REMOVE AND USE SOFTWARE.....	12
4.1 System Requirements	
4.2 Installation/Upgrading/Uninstalling the Driver	
4.3 Connection Method	
4.4 Disabling the Projection Keyboard Sound	
5.5 PK Settings Application	
5.6 Tutorial	
5.7 Shortcut Icon Keys	
5.8 Function Key and Ctrl Key	
5. KEYBOARD LAYOUT.....	33
6. TYPING LATIN LETTERS AND ADDITIONAL CHARACTERS.	34
7. ADJUSTING KEY SENSITIVITY.....	36

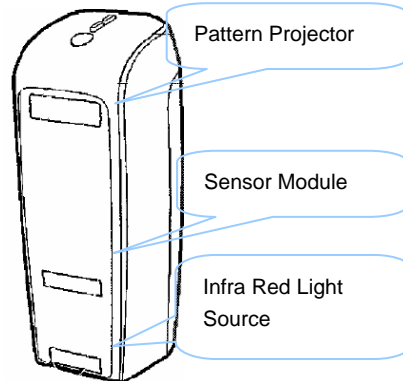
8. SAFETY PRECAUTIONS38
9. TROUBLESHOOTING40
10. SPECIFICATIONS AND DEMENSIONS42

1. Features



- Uses normal QWERTY keyboard layout.**
- Compact size (convenient to carry).**
- Includes function and shortcut icon keys.**
- Robust and durable, uses optical technologies**
- Bluetooth and serial port interface connections.**
- Rapid entry keys.**
- Economical, uses an integrated, rechargeable lithium battery.**
- Compatible with Pocket PC, Palm OS and Windows.**

2. Parts and their Functions



Projector: projects the keyboard image.

Infra Red Light Source: supplies the light source to allow the **Sensor Module** to recognize key strokes.

Sensor Module: recognizes key strokes and transmits them to the processing device.

3. How to Operate

3.1 In USB Mode

1. Turn power on.
2. Connect device to computer via cable.
3. Use laser keyboard.

3.2 In Bluetooth Mode

1. Install software as described in "Manual 4".
2. Turn power on.
3. Set up Bluetooth environment as described in "Manual 4".
4. Use laser keyboard.

4. How to install, remove and use software

4.1 System Requirements

1. Microsoft Windows 2000/XP operating system.
2. Microsoft ActiveSync 3.6 or above.
3. Pocket PC based on Microsoft Windows Mobile 2003, with Bluetooth (Widcomm or Microsoft).

4.2 Installation/ Upgrading/ Uninstalling the Driver

For serial port drivers please refer to <http://www.celluon.de>.

1. Installation

- 1) Connect PC to Pocket PC via ActiveSync.
- 2) Insert installation CD into the CD-ROM drive of your PC to start the installation program.
- 3) Follow installation program instructions.

2. Upgrading

Download and install a new driver from <http://www.celluon.de>.

3. Uninstalling

- 1) Select **Today** → **Settings** → **System** → **Remove Programs** as shown in Figure 1.

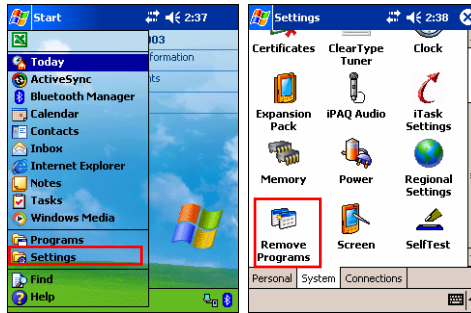


Figure 1. Uninstalling the Driver

2) Choose **Projection Keyboard** and click **Remove**, as shown in Figure 2. Follow the on-screen instructions.

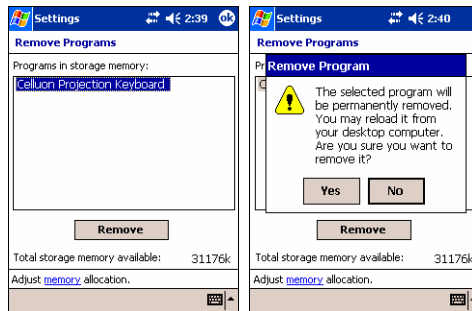


Figure 2. Uninstalling the Driver

4.3 Connection Method

To connect a Pocket PC to the Projection Keyboard follow the instructions below.

1. Turn on power to Pocket PC and Projection Keyboard.

Note: Verify that sufficient battery power is supplied to the Projection Keyboard device

2. Run the program required to enter the keyboard as shown in Figure 3 (e.g. Note).

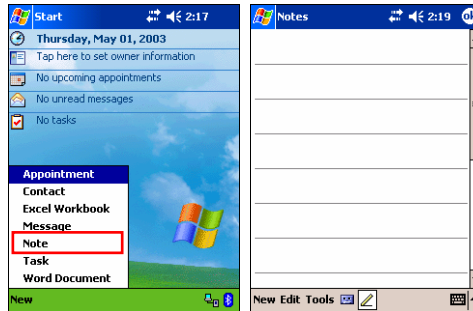


Figure 3. Running the Program

3. Select **Projection Keyboard** from the options, as shown in Figure 4.

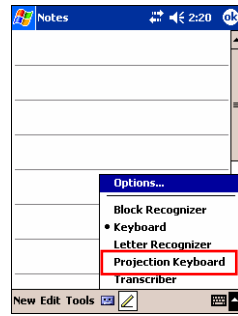


Figure 4. Selecting a Device

4. When the Bluetooth Browser is open, choose CL850, as shown in Figure 5.



Figure 5. Selecting a Bluetooth Device

5. You are now ready to use the Projection Keyboard. To change the Projection Keyboard's set values, click on the Projection Keyboard icon to view the control panel, as shown in Figure 6.

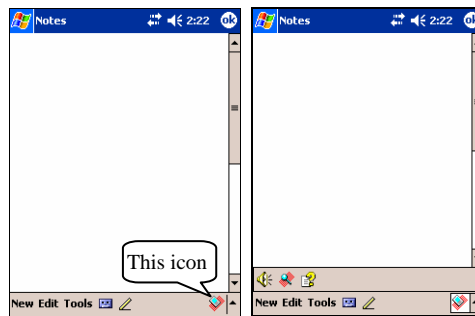


Figure 6. Projection Keyboard Control Panel

4.4 Disabling the Projection Keyboard Sound

When the user clicks the keyboard sound icon, a clicking sound is emitted from the Pocket PC. To turn off the sound, click the keyboard sound button once; click again to turn it back on, as shown in Figure 7.



Figure 7. Keyboard Sound Icon

4.5 PK Settings Application

Click on the settings icon to change the different setting values on the Projection Keyboard, as shown in Figure 8.

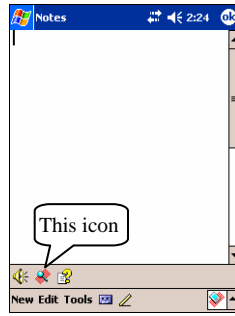


Figure 8. PK Settings Icon

Click the settings icon to view the Change Settings screen, as shown in Figure 9. These settings enable the user to adjust key repeat, key sound and key sensitivity.

4.5.1 Main Change Settings Tab

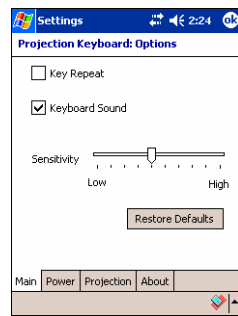


Figure 9. Main Change Settings Tab

Key Repeat

By using Key Repeat, continuously pressing a key causes the value to be entered repeatedly. Select the **Key Repeat** checkbox to use the key repeat function or deselect to disable the function.

Keyboard Sound

Clicking the Keyboard Sound function causes a clicking sound to be emitted from the Pocket PC. Select the Keyboard Sound checkbox to turn on the key sound function or deselect it to disable the function.

Sensitivity

If the Projection Keyboard has a problem with key sensitivity, adjust the setting using the slider.

For details, see "8. Adjusting Key Sensitivity".

Restoring Defaults

To restore all functions to their default values, click the Restore Defaults button.

4.5.2 Power Save Mode

Adjust the Power Save Mode from the **Power** tab on the Change Settings screen.

Power Save Mode On

Click on the **Power Save Mode On** checkbox to use this function, as shown in Figure 10.

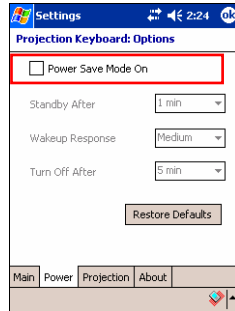


Figure 10. Power Save Mode

Standby

Change the Standby setting value to alter the time elapsed before the system enters Standby mode. In Standby mode, if no keys are pressed within a given period of time the device will enter a low power mode until a key is pressed again.

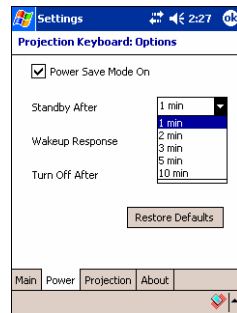


Figure 11. Standby Mode

Wakeup Response

To use the keyboard again, press any key or area of the keyboard. Change the Wakeup Response settings to adjust the speed for switching between Standby and normal mode, as shown in Figure 12.

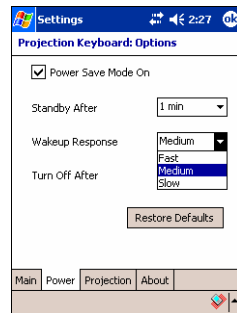


Figure 12. Wakeup Response

Turning Off the Projection Keyboard

Once in Standby mode, if no keys are pressed within the time specified in the Turn Off After field, the device will enter Power OFF mode, as shown in Figure 13. To use the keyboard from Power OFF mode, turn the Projection Keyboard on again.

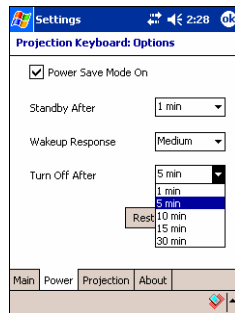


Figure 13. Power OFF Mode Time Setting

Restoring Defaults

To restore the settings in the Power tab to their default values, click the **Restore Defaults** button.

4.5.3 Projection Control

Adjust keyboard brightness using the settings in the **Projection** tab.

Projector Normal

Adjust the keyboard brightness using the slider for the Projector Normal setting, as shown in Figure 14

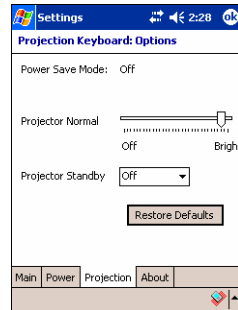


Figure 14. Projector Normal

Projector Standby Mode

Change the settings in the Projector Standby box to set the keyboard brightness in Standby mode, as shown in Figure 15.

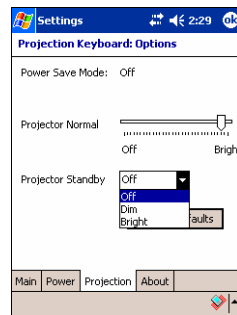


Figure 15. Projector Standby

Restoring Defaults

To restore the settings in the Power tab to their default values, click the **Restore Defaults** button.

4.5.4 Driver Information

Driver information for the Projection Keyboard is located under the About tab in the Settings screen, as shown in Figure 16.

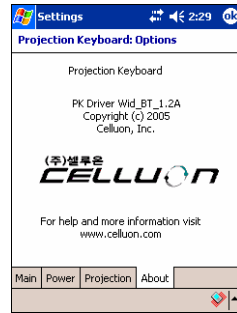


Figure 16. Driver Information

4.6 Tutorial

Click the Tutorial icon in the Projection Keyboard control panel to launch the Projection Keyboard Tutorial, as shown in Figure 17. The Tutorial offers information on how to use the Projection Keyboard.

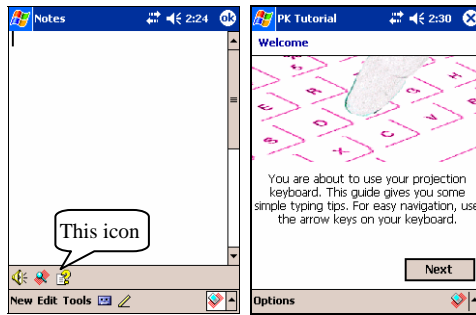


Figure 17. Projection Keyboard Tutorial

4.7 Shortcut Icon Keys

Table 1.1 below shows the description for each icon.









Icon	Functions
	Switch to Today screen
	Run To Do program
	Run Mail program
	Run Find program
	Run Web Browser
	Run Calculator program
	Run Calendar program
	Run Address program

Table 1.1 Shortcut Icon Keys

4.8 Function Key and Ctrl Key

Table 1.2 shows FN and CTRL key combinations.

Key	Shortcut Key	Functions
FN	FN - 1	Run Note program
	FN - ENTER	Close the current program
	FN - ← (Left Arrow)	Home
	FN - → (Right Arrow)	End
	FN - ↑ (Up arrow)	Page Up
	FN - ↓ (Down Arrow)	Page Down
CTRL	CTRL - Z	Undo
	CTRL - X	Cut
	CTRL - V	Paste
	CTRL - C	Copy
	CTRL - A	Select All
	CTRL - U	Underline
	CTRL - N	Application Specific
	CTRL - S	Application Specific
	CTRL - F	Application Specific
	CTRL - Q	Application Specific

Table 1.2 Key Combinations

5. Keyboard Layout

Key layout of Projection Keyboard is as follows.



6. Typing Latin Letters and Additional Characters

FIRST	SECOND														Remark		
	A	E	I	O	U	Y	N	B	C	/	P	S	T	D		+ R	
FN - '	SHIFT	Á	É	Í	Ó	Ú	Ý										
		á	é	í	ó	ú	ý										
FN - SHIFT - 6	SHIFT	Â	Ê	Î	Ô	Û											
		â	ê	î	ô	û											
FN - SHIFT - ;	SHIFT	Ä	Ë	Ï	Ö	Ü	ÿ										
		ä	ë	ï	ö	ü	ÿ										
FN - `	SHIFT	À	È	Ì	Ò	Ù											
		à	è	ì	ò	ù											
FN - SHIFT - `	SHIFT	Ã			Õ		Ñ										
		ã			õ		ñ										
FN - O	SHIFT	À															
		à															
FN - ,	SHIFT								Ç								
									ç								
FN - /	SHIFT				Ø												
					ø												
FN - E	SHIFT	Æ			Œ												
		æ			œ												
FN - S	SHIFT					¶											Symbol
						μ		β	©	¿	§	™	"	±	®		
FN - C		€				¥		¢		£							Currency

Key input e.g. 1) to input "Á" character:

Press FN key and ' key simultaneously.

Release both keys.

Press SHIFT and A simultaneously.

Key input e.g. 2) to input " ñ " character:

Press the FN key, SHIFT key and ` key simultaneously.

Release keys.

Press N.

Key input e.g. 3) to input "€" character:

Press FN key and C key simultaneously.

Release both keys.

Press E.

7. Adjusting Key Sensitivity

The Projection Keyboard determines key input based on the amount of light reflected from the finger. Since the perceived amount of light changes depending on the surrounding environment, key sensitivity should be set according to user-specific conditions.

How to Adjust Key Sensitivity

1. Click Sensitivity on the settings screen.
2. Adjust the Sensitivity slider. Check if a key stroke is recognized by pressing the center of the space bar key.

Key Sensitivity Setting Factors

Skin color

Thickness of fingers

Typing habit (leaning on keys)

Finger accessories (manicure etc.)

Surrounding environment

Caution

- Key sensitivity must be adjusted each time a new user accesses the keyboard according to the new user's requirements.
- To ensure correct operation, avoid extreme light sources.
- Relevant environmental factors include:
 - Direct sunlight, artificial light, Infra Red Data Association (IrDA), remote control devices.

8. Safety Precautions

Never look directly at the light source.

Avoid direct sunlight or high levels of infrared rays.

Do not use in extreme brightness.

Do not use under very bright incandescent light.

Do not insert conductive material into the device, or damage the power or communication ports.

Do not strike or knock the device as this may cause damage or operational failure.

Do not disassemble the device. (After Sales Service will not be available)

Only use the cable/charging adapter supplied.

High pressure or heat may cause the lithium battery to explode.

Remove all objects on the surface between the device and the keyboard.

Use on a flat surface.

Avoid glass or transparent surfaces.

Fingers should not be positioned less than 5 mm from the surface.

Do not operate or store in high temperature or humidity.

Do not submerge in water.

It is not possible to get After Service for battery failure

caused by water. (Determined by color on the attached sticker.)

9. Troubleshooting

The device will not turn on.

Cause: Discharged battery.

Solution: Charge the battery fully.

Key strokes not recognized even though the keyboard is connected.

Cause: Sensitivity set too low.

Solution: Reset to higher sensitivity and restart the device.

Keyboard image is not visible even though the keyboard operates.

Cause:

1. When brightness is set low, standby or off
2. The device is not charged.

Solution:

1. Set brightness high, normal or on
2. Charge the device.

Cause: The device is overheated.

Solution: Move it to cooler surroundings and wait for a short time before restarting.

Cause: The device was not positioned on a flat surface.

Solution: Move to a flat surface.

Incorrect keys are recognized when typing.

Cause: Sensitivity is set too high.

Solution: Reset to lower sensitivity and restart the device.

Cause: The device was not positioned on a flat surface.

Solution: Move to a flat surface.

10. Specifications and Dimensions

Keyboard Project

Items	Specifications
Light source	Red diode laser
Keyboard layout	19mm QWERTY layout
Keyboard size	Approx. 241mm*106mm
Keyboard position	Approx. 100mm from keyboard device
Projection surface	Non-reflective, opaque flat surface
Visibility	Visible in 1000-5000 lux ambient light

Keyboard Sensor

Items	Specifications
Illumination	Visible in incandescent light of 1800 lux or more
Detection rate	Up to 400 characters per minute
Effective key stroke	Approx. 2mm
Operating surface	Any flat surface

Electrical Condition

Items	Specifications
Power source	Integral lithium battery
Battery capacity	830mAH(Max)@3.7V
Adapter	Rating 1A @ 5V
Interface	USB
Bluetooth	v1.1 class 2
Power consumption	Max. 3W@5V

Environmental Condition

Items	Specifications
Operating temperature	0~40°C
Storage temperature	-20~50°C (including battery)

Compatible Operating Systems

Microsoft Windows Mobile 2003

Palm OS 5.x

Microsoft Windows XP

Size (mm): 93 * 39 * 37.5

Weight: 109g

For information on device and driver compatibility, please refer to <http://www.celluon.com>