

FCC Statement and Additional Information

FCC Part 15.19

This device complies with Part 15 of the FCC Rules. Operation is subject to the following two conditions:

- (1) This device may not cause harmful interference, and
- (2) This device must accept any interference received, including interference that may cause undesired operation.

FCC Part 15.21

Warning: changes or modifications to this unit not expressly approved by the party responsible for compliance could void the user's authority to operate the equipment.

FCC Part 15.105

This equipment has been tested and found to comply with the limits for a Class B digital device, pursuant to Part 15 of the FCC Rules. These limits are designed to provide reasonable protection against harmful interference in a residential installation. This equipment generates, uses, and can radiate radio frequency energy and, if not installed and used in accordance with the instructions, may cause harmful interference which will not occur in a particular installation. If this equipment does cause harmful interference to radio or television reception, which can be determined by turning the equipment off and on, the user is encouraged to correct the interference by one or more of the following measures:

- Reorient or relocate the receiving antenna.
- Increase the separation between the equipment and receiver.
- Connect the equipment into an outlet or circuit different from that to which the receiver is connected.
- Consult the dealer or an experienced radio/TV technician for help.

Warranty Information

Omnitech™ Brand Limited 1 Year Warranty

Staples the Office Superstore, LLC ("Staples") or The Business Depot Ltd. ("Business Depot"), warrants to the original purchaser that this Omnitel™ brand product shall be free of defects in design, assembly, material, or workmanship for 1 year from the date of purchase. In the event of a defect in the design, assembly, materials or workmanship of this product within 1 year from the date of purchase (proof of purchase required), Staples or Business Depot, as the case may be, will either replace any such product with the same or equivalent product free of charge or refund 100% of the purchase price at Staples or Business Depot's option. To claim your replacement or refund, contact product support at 1-888-496-9138. This warranty does not apply to normal wear or damage from misuse, abuse, improper storage or handling, installation, accident, repair or alteration or other circumstances not directly attributable to manufacturing or material defects. THIS WARRANTY IS EXCLUSIVE AND IN LIEU OF ALL OTHERS, WHETHER ORAL OR WRITTEN, DISCLAIMS ANY AND ALL IMPLIED WARRANTIES, INCLUDING WITHOUT LIMITATION, WARRANTIES OF MERCHANTABILITY AND FITNESS FOR A PARTICULAR PURPOSE. IN NO EVENT WILL STAPLES OR BUSINESS DEPOT BE LIABLE FOR ANY INCIDENTAL, DIRECT, INDIRECT, SPECIAL, PUNITIVE, OR CONSEQUENTIAL DAMAGES (SUCH AS BUT NOT LIMITED TO, DAMAGES FOR LOSS OF PROFITS, BUSINESS, SAVINGS, DATA OR RECORDS) RELATED TO THIS PRODUCT. The warranty gives you specific legal rights, and you may also have other rights that vary depending upon the state, province, territory or country. Some states, provinces and territories do not allow the exclusion or limitation of incidental or consequential damages or limitation on how long an implied warranty lasts.

Except as stated herein no other warranties shall apply.



Wireless Headphones (model # 20199)

We're here to help From 8:00 am to 8:00 pm EST Monday to Friday, call Product Support at:

888-496-9138

Or visit us online:

www.product-support.omniteltechnology.com



900MHZ WIRELESS STEREO HEADPHONES



User's Manual

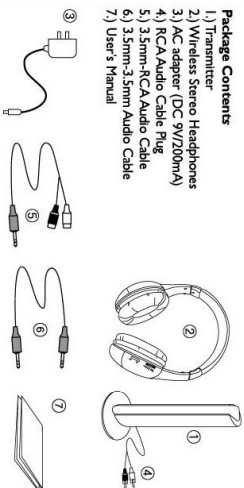
20199

Printed in China

Please read these instructions carefully and completely before using the wireless headphones.

Package Contents

- 1) Transmitter
- 2) Wireless Stereo Headphones
- 3) AC adapter (DC 9V/200mA)
- 4) RCA Audio Cable Plug
- 5) 3.5mm RCA Audio Cable
- 6) 3.5mm-3.5mm Audio Cable
- 7) User's Manual

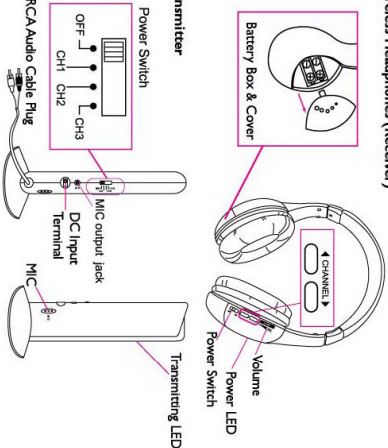


Technical Specifications

System: UHF/RFE
Channel frequency: 913.5, 914, 914.5MHz
Modulation: FM
Mode: stereo
Transmit power: $\leq 10mW$
S/N ratio: 26dB
Channel separation: >30db
Distortion: <math>< 2\%</math>
Frequency response: 30-15,000 Hz
Power supply of transmitter: DC 9V 200mA
Power supply of headphones: 2 x AAA batteries (not included)

Description of Parts

Wireless Headphones (Receiver)



Installation

Transmitter

1. Insert one end of the AC adapter into the DC Input Terminal socket on the rear panel of the transmitter; Insert the other end of the AC adapter into an AC wall outlet.
2. Insert the RCA audio cable plug of the transmitter into the AUDIO-OUT socket of your audio source (such as a TV set, PC, DVD player, CD player, MP3, other audio device, etc.) - see Figure 2a. If the AUDIO-OUT socket of your audio source is an earphone socket, the 3.5mm-RCA audio cable can be used for connection - see Figure 2b.

Wireless Headphones (Receiver)

Insert 2 x AAA batteries (not included) into the battery compartment of the wireless headphones (receiver) according to the + and - polarity.

BATTERY USE WARNING

- Do not mix old and new batteries.
- Do not mix alkaline standard (Carbon-Zinc), or rechargeable (Nickel Cadmium) batteries.
- Remove the batteries if the product is to be left unused for a long time.

Operation

Wireless Headphones

1. Insert the transmitter RCA audio cable plug into the AUDIO-OUT socket of your audio device or earphone socket (see Figures 2a and 2b). Then move the function switch of the transmitter to the channel which gives you the best reception (either CH1, CH2 or CH3).

2. Turn ON the power (ON/OFF switch on the wireless headphones (receiver)). The power indicator on the wireless headphones (receiver) will go on; the sound sent from the transmitter should be heard. If the sound is poor, you can press the CHANNEL button on the wireless headphones (receiver) to select the right channel.

Wireless PC Audio Chat

1. Insert the transmitter RCA audio cable plug into the AUDIO-OUT socket of the PC (see Figure 3). NOTE: You may need to use the 3.5mm-RCA audio cable for this connection. Then, connect one end of the 3.5mm-3.5mm audio cable into the PC jack on the transmitter and the other end into the microphone socket of the PC.

2. Move the function switch on the transmitter to either the CH1, CH2 or CH3 position. Aim the transmitter MIC towards you (see Figure 1).

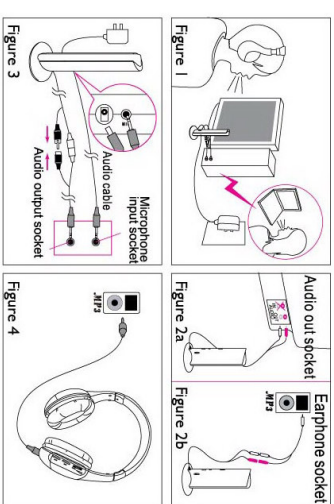
3. Turn ON the power (ON/OFF switch on the wireless headphones (receiver)). The power indicator on the wireless headphones (receiver) will go on; the sound sent from the transmitter should be heard.

Wired Headphones

Connect one end of the 3.5mm-3.5mm audio cable to the AUDIO IN socket of the wireless headphones (receiver) and the other end of the audio cable to the AUDIO OUT socket of your audio device (MP3, DVD/VCD, CD/TV, etc.). The wireless headphones will now function as wired headphones (see Figure 4).

Turning Off the Unit

When the unit is not in use, set the function switch of the transmitter to the OFF position. Then turn the power switch of the wireless headphones (receiver) to the OFF position. The power indicator on the wireless headphones (receiver) will then turn off.
Note: When the unit is not used for a long time, please take out the batteries.



Note

- If there is no audio signal input, the transmitter power will switch off automatically after 1 minute.
- If the sound is distorted or too loud, adjust the volume of the audio source (TV, VCD, DVD, PC, etc.) to a lower level; the reception performance should then improve.
- Replace the batteries if the following conditions occur:
 1. The reception of the headphones is poor.
 2. The volume becomes weak and the sound is distorted.