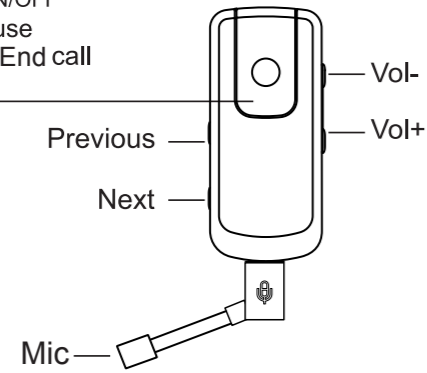


# USER'S MANUAL

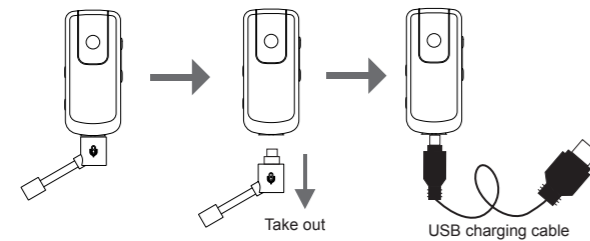
## 1. About MH-809

### Multifunction key:

- Power ON/OFF
- Play / Pause
- Answer / End call
- Pair



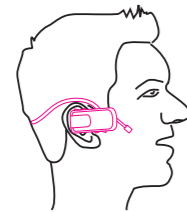
## 2. Charging Earphone



Take out the mic connector and put in the charging cable connector for battery recharging.

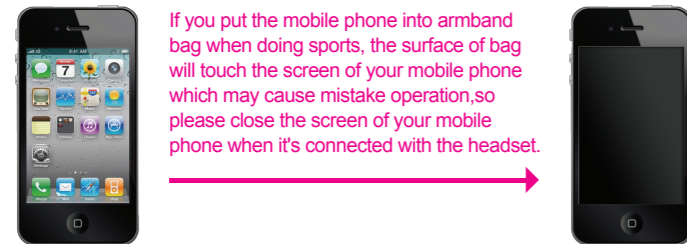
- 1 Built-in rechargeable Lithium battery, It must take 4 hours for the first time charging.
- 2 Connect the USB charging cable to the charger connector. The Red indicator light is displaying when charging. When the battery is fully charged, the Red indicator light will be off. Fully charged may take about 2 hours from second time.

## 3. Way of wearing



**BLUETOOTH HEADPHONE**  
 MODEL# : MH 809  
 FCC ID: Y1LMH 809  
 This device complies with Part 15 of the FCC Rules. Operation is subject to the following two conditions: (1) This device may not cause harmful interference, and (2) this device must accept any interference received, including interference that may cause undesired operation.  
 MADE IN CHINA

## 4. Operating



### • Switch on or off

- 1 Press and hold the multifunction key for about 3 seconds, the Blue indicator light is displayed. It shows the earphone is power on.
- 2 Press and hold the multifunction key until the Red indicator light is displayed. It shows the earphone is power off.

### • Pair the headset

If your phone or tablet supports the A2DP Bluetooth profile and has a music player feature, you can make and receive calls, and listen to music with the headset.

- 1 Ensure that your phone tablet or music device is on and the headset is off.
- 2 Press and hold the multifunction key for about 5 seconds until the Red indicator light and the Blue indicator light starts to flash quickly.
- 3 Activate the Bluetooth feature on your phone or tablet and set it to search for Bluetooth devices.
- 4 Select the headset MH-809 from the list of founded devices on your phone or tablet.
- 5 Enter the passcode 0000 to pair and connect the headset to your device. If your device does not have a passcode, it will pair with the headset automatically.
- 6 When the headset is connected to your phone or tablet and is ready for use, the red indicator light will be off and the Blue indicator light will flash every 2 seconds.

### • Listen to music

To listen to music, pair and connect the headset to a device that supports the A2DP Bluetooth profile (See "Pair the headset"), use the playback controls on the connected device. If you answer or make a call while listening to the music, the music will pause until you end the call.

Function	Description
Play or Pause	Press The Multifunction Key
Music Volume	Press The "+" key   Volume Increase Press The "-" key   Volume Decrease
Previous	Press The "⏮" key
Next	Press The "⏭" key

### • Receiving a call

Short press the Multifunction key to receive an incoming call.

### • Ending a call

Short press the Multifunction key to end a call

### • Making a call

When you make a call via the mobile phone, the call will be transferred to your headset automatically, depending on the phone setup. If your phone does not support this function, short press the Multifunction key to receive an incoming call.

### • Voice call activation\*

If your phone supports this feature with the headset, when no call is in progress, press and hold the multifunction key for about 2 seconds. Proceed as described in your phone user guide..

### • Redialing the last number \*

To redial the number you last called (if your phone supports this feature with the headset), when no call is in progress, press the multifunction key twice.

### • Rejecting a call \*

Press the multifunction key twice to reject a call.

### • Note:

The functions with \* mark must be supported by your mobile phone. For more information, refer to the User Manual of your mobile phone.

## 5. Troubleshooting

### Continuous cracking noise

- To obtain perfect sound quality, please don't take the headset too far away from mobilephone.

### Unable to hear any sound

- Press the Volume + button on the headset to increase the volume.
- Ensure the headset is connected to the mobile phone or tablet. If the headset is not connected to the phone via the Bluetooth option, please follow the pairing process to connect them. For details, refer to the part "Pairing the Headset" in this manual.

### Unable to connect

- The pairing settings between the headset and mobile phone or tablet may be deleted. Follow the part "Pairing the Headset" in this manual to pair them again.

### Can this headset apply to other Bluetooth devices?

- MH-809 Bluetooth headset is designed to pair Bluetooth mobile phones and tablets. In addition, it is compatible with Bluetooth Version 1.1, Version 1.2 or 2.0 and supports operations upon other Bluetooth devices.

## 6. Maintain your earphone

- Store the headset after it is power off. Keep it away from extreme temperature (45°C/113°F above, including direct sunlight or -10°C/14°F below) for storage. Otherwise it may shorten the service life of the battery and harm the operation.
- If the device contacts water or other liquids, wipe away the water stains on the device.

## 7. Protect your hearing

### Safety guide

- To protect your hearing, please don't turn the volume too loud, otherwise it may damage your hearing.
- Minimize the volume before wearing the headset, then adjust the volume to a proper level slowly after you wear it.
- During operation, keep the volume as low as possible. Avoid using the device in noisy surroundings, as you may have to increase the volume. If you have to increase the volume, control the speed for volume adjusting
- If you feel uncomfortable or a drumming in your ears, stop using the headset and seek medical assistance immediately.
- Continuous exposure to high volume may have you adapted to the volume level. This may result in permanent hearing loss without causing discomfort.

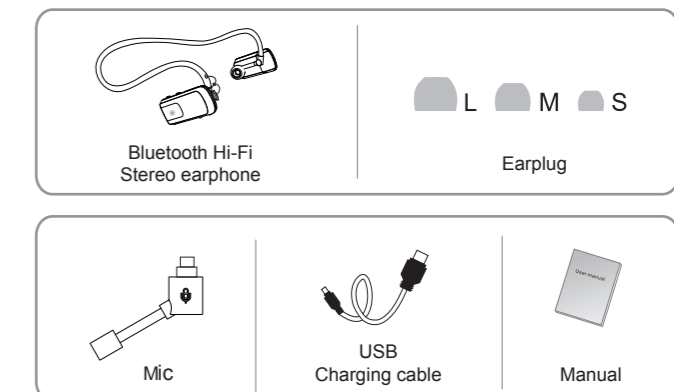
## 8. Warning

- Changes or modifications not expressly approved by the party responsible for compliance could void the user's authority to operate the equipment.
- This equipment has been tested and found to comply with the limits for a Class B digital device, pursuant to Part 15 of the FCC Rules. These limits are designed to provide reasonable protection against harmful interference in a residential installation. This equipment generates, uses and can radiate radio frequency energy and, if not installed and used in accordance with the instructions, may cause harmful interference to radio communications. However, there is no guarantee that interference will not occur in a particular installation.
- If this equipment does cause harmful interference to radio or television reception, which can be determined by turning the equipment off and on, the user is encouraged to try to correct the interference by one or more of the following measures:
  - Reorient or relocate the receiving antenna.
  - Increase the separation between the equipment and receiver.
  - Connect the equipment into an outlet on a circuit different from that to which the receiver is connected.
  - Consult the dealer or an experienced radio/TV technician for help.

## 9. Product specification

- Bluetooth specification: Support V2.1+EDR with Handsfree Profile 1.5., Headset Profile 1.1 and A2DP profile 1.2. (Class II)
- Standby time: 100 hours
- Talking time: 8 hours
- Playing music time: 7 hours
- Distance: up to 10 meters
- Weight: 24g
- Certification: CE; FCC; ROHS; BQB

## 10. Include



- The accessories are subject to change for improving product performance without prior notice. The real products prevail.

尺寸: 210\*250mm