



WIRELESS TOWER SPEAKER

(WITH DISCO PARTY LIGHTS)
PBT3012 | USER MANUAL



Questions?
Need some help?
This manual will help you
get your new product.



If you still have questions,
ask our help line:
1-877-769-8481



or visit us at:
www.polaroid.com
Click on "Polaroid Support"

IN THE BOX



Wireless Tower Speaker



User Manual



3.5mm Auxiliary Cable



4 Screws

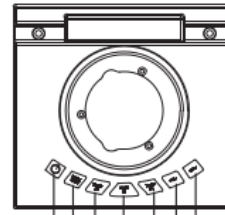


Tower Base



Remote Control

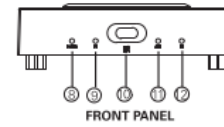
LOCATION OF CONTROLS



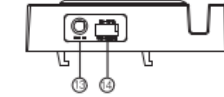
TOP PANEL

- [⏻] button:** Power ON/OFF
- [MODE/LIGHT] button:**
 - Quick press - Bluetooth, AUX IN, FM Radio
 - Long press - activate light
- [TUNE-/⏮] button:**
 - Quick press - skip to previous song
 - Long press - tune FM Radio up
- [SCAN/▶|] button:**
 - Quick press - Play/pause
 - Long press - scan FM Radio
- [TUNE+/⏭] button:**
 - Quick press - skip to next song
 - Long press - tune FM Radio down
- [VOL -] button:** Decrease volume
- [VOL +] button:** Increase volume

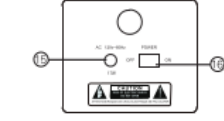
LOCATION OF CONTROLS (cont'd)



FRONT PANEL



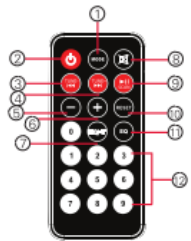
SIDE PANEL



BACK PANEL

- LED Power indicator light
- LED Bluetooth indicator light
- Infrared sensor
- LED AUX indicator light
- LED FM Radio indicator light
- AUX-IN port
- USB charging port (for the speaker and other devices)
- AC plug
- Main Power ON/OFF switch

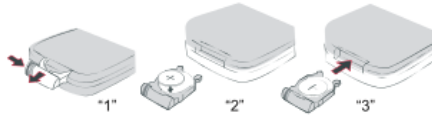
LOCATION OF CONTROLS (cont'd)



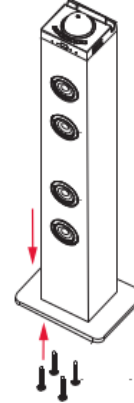
- [MODE] button:** Bluetooth, AUX IN, FM Radio
- [⏻] button:** Power ON/OFF
- [TUNE-/⏮] button:**
 - Quick press - skip to previous song
 - Long press - tune FM Radio up
- [TUNE+/⏭] button:**
 - Quick press - skip to next song
 - Long press - tune FM Radio down
- [-] button:** Decrease volume
- [+] button:** Increase volume
- [LIGHT] button:** Turn on lights
- [⏻] button:** Mute
- [▶|] button:**
 - Quick press - Play/pause
 - Long press - scan FM Radio
- [RESET] button:** Stop
- [EQ] button:** Equalizer
- Numeric buttons

INSTALLING THE BATTERY

NOTE: The battery for the remote control (1 CR2025 lithium battery) is included. To replace the battery, push and slide out the battery door in the remote control. Replace the battery with a new CR2025 battery with the polarity "+" facing up. Slide the door back.



SETTING UP THE SPEAKER



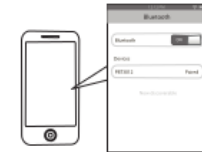
- Connect the wooden tower base to the speaker using the supplied screws.
- Connect the AC plug on the back of the unit into an outlet.

PAIRING THE SPEAKER

- Plug the speaker into a power source.
- Turn the speaker ON by pressing the Main Power switch on the back of the unit, then the [⏻] button on the top panel or the remote control.
- Press the [MODE/LIGHT] button on the speaker or the [MODE] button on the remote control repeatedly until the LED Bluetooth indicator light flashes GREEN and a tone is heard.
- Keep the speaker and Bluetooth enabled device within 3 feet of each other during the pairing process.
- Use your mobile phone or other Bluetooth enabled device to search for Bluetooth devices.

i If a paired device is in range, the speaker will connect to it automatically when Bluetooth mode is enabled.

- On an iPhone**
- Go to SETTINGS > BLUETOOTH (Make sure Bluetooth is turned ON)



PAIRING THE SPEAKER (cont'd)

- On a Blackberry**
- Go to SETTINGS/OPTIONS > BLUETOOTH
 - Enable BLUETOOTH



- On an Android Phone**
- Go to SETTINGS > BLUETOOTH > MENU > Search for devices (Make sure Bluetooth is turned ON)



PAIRING THE SPEAKER (cont'd)

- On other Cell Phones/Devices**
- Review the instruction manual that came with your phone/device.



- When the Bluetooth enabled device finds the turntable, select "PBT3012" from the list of found devices.
- If required, enter the password 0000. Select OK or Yes to pair the two units.
- After a successful pairing, the LED Bluetooth indicator light will slowly flash GREEN.

NOTE: If you would like to connect the speaker to another device, you must unpair the unit from the currently paired device first. In your device's Bluetooth settings, select "PBT3012," then select "unpair." When the speaker has been unpaired, it automatically goes into pairing mode again.

i The screenshots above are typical of many Bluetooth enabled devices in the market today, and are used to assist in the explanation of the pairing process. Your Bluetooth enabled device's interface and interaction with the speaker may slightly differ from the illustrations above.

USING THE SPEAKER

Powering ON/OFF

Turn the speaker ON by pressing the Main Power switch on the back of the unit, then the [⏻] button on the top panel or the remote control. Press again to turn OFF.

Adjusting the volume

- Quickpress the [VOL+] button on the speaker or the [+] button on the remote control to gradually increase the volume; press and HOLD to continually increase the volume to maximum level.
- Quickpress the [VOL -] button on the speaker or the [-] button on the remote control to gradually decrease the volume; press and HOLD to continually decrease the volume to minimum level.
- Press the [⏻] button on the remote control to mute the sound. Press again to turn the sound back on.

i You may also adjust the volume from your connected device's volume control.

Switching modes

Press the [MODE/LIGHT] button on the speaker or the [MODE] button on the remote control repeatedly to switch between modes. The LED indicator light will light up accordingly: Bluetooth, AUX, and FM Radio.

Disco light

To turn ON the Disco light, long press the [MODE/LIGHT] button on the speaker or the [LIGHT] button on the remote control. Long press again to turn OFF.

PLAYING MUSIC

Playing wireless music

To enjoy wireless music on your Wireless Tower Speaker, make sure you are connected to a Bluetooth enabled device. Once connected press PLAY on your Bluetooth device. When playback has begun, you can control the music with your connected device or the buttons of the Bluetooth speaker (with devices that have the AVRCP Bluetooth profile).

Play/Pause

- Quick press the [SCAN/▶||] button on the speaker or the remote control to pause the music.
- To resume music playback, quick press the [SCAN/▶||] button again.

Skipping Songs

- Quick press the [TUNE-/◀] button on the speaker or the remote control to skip to the previous song.
- Quick press the [TUNE+/▶] button on the speaker or the remote control to skip to the next song.

PLAYING MUSIC (cont'd)

Adjusting the volume

- Quickpress the [VOL+] button on the speaker or the [+] button on the remote control to gradually increase the volume; press and HOLD to continually increase the volume to maximum level.
- Quickpress the [VOL -] button on the speaker or the [-] button on the remote control to gradually decrease the volume; press and HOLD to continually decrease the volume to minimum level.
- Press the [M] button on the remote control to mute the sound. Press again to turn the sound back on.



You may also adjust the volume from your connected device's volume control.

Equalizer

Press the [EQ] button on the remote control to adjust equalizer settings.

FM RADIO MODE

Listening to the radio by scanning

1. Quick press the [MODE/LIGHT] button on the speaker or the [MODE] button on the remote control repeatedly until the LED FM Radio indicator light turns GREEN.
2. Press and hold the [SCAN/▶||] button on the speaker for a second and then release, or press the [▶||/SCAN] button on the remote control. All available stations will be searched and then stored into the memory automatically.
3. After scanning, press the numeric buttons to select 1-20 preset stations. (Ex: pressing 1 means preset station 1, pressing 2 and 0 means preset station 20, etc.)

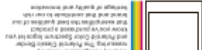
NOTE: After scanning and saving stations, if the Wireless Tower Speaker is turned OFF and then back ON, be sure to select your preset stations with the numeric buttons. If you press [SCAN/▶||] again, the scanning process will start over.

Listening to the radio by manual search

Long press the [TUNE-/◀] and [TUNE+/▶] buttons on the speaker or the remote control to go to the next radio station.



To enhance radio reception ability, fully unwind and extend the FM antenna wire located on the back of the speaker.



Plugging the device or an experienced radio/TV technician for help.

Connect the equipment into an outlet on a circuit different from that to which the roomer is connected.

Disconnect or relocate the receiving antenna.

Disconnect or relocate the receiving antenna.

Caution: Any changes or modifications not expressly approved could void the user's warranty to operate the equipment.



USING AS A WIRED SPEAKER

1. Quick press the [MODE/LIGHT] button on the speaker or the [MODE] button on the remote control repeatedly until the LED AUX indicator light turns GREEN.
2. Connect one end of the 3.5mm auxiliary cable to the AUX-IN port on the side of the speaker, and the other end of the cable to an external device's headphone port (smartphone, tablet, MP3 player).
3. Use the controls on your connected device to control music playback and volume.



When a device is plugged into the AUX-IN jack, only the volume can be controlled by the buttons on the speaker and remote control. You must use your connected device to control music playback.

CHARGING DEVICES

The Wireless Tower Speaker has a USB input located on the side panel. This can be used as a charging port for charging external devices such as MP3 players, smartphones or tablets.

1. Attach your device to the speaker's USB port using your device's USB charging cord.
2. The device will start charging automatically.
3. Check your device's charging indicator for charging status.

TROUBLESHOOTING (cont'd)



I cannot get the Wireless Tower Speaker into pairing mode.

1. Make sure the Wireless Tower Speaker is turned ON before beginning the pairing process.
2. Press the [MODE/LIGHT] button on the speaker or the [MODE] button on the remote control repeatedly until the LED Bluetooth indicator light flashes GREEN and a tone is heard.
3. The turntable is now in pairing mode.

TROUBLESHOOTING



I can pair the Wireless Tower Speaker with my Bluetooth device, but I cannot hear any music.

1. Make sure your Bluetooth device supports A2DP profile.
2. Turn up the volume on your Bluetooth device.
3. You may have to unpair the speaker, then re-pair to your device.
4. Use your connected device to increase the volume.



My Bluetooth device is not able to pair with the Wireless Tower Speaker.

1. Make sure the Wireless Tower Speaker is turned ON before beginning the pairing process.
2. Keep the Wireless Tower Speaker and Bluetooth enabled device within 3 feet of each other during the pairing process.
3. Press the [MODE/LIGHT] button on the speaker or the [MODE] button on the remote control repeatedly until the LED Bluetooth indicator light flashes GREEN and a tone is heard.
4. Check that YOUR device's Bluetooth feature is turned ON.
5. Try repeating the pairing process, see "Pairing the Speaker".

SAFETY INSTRUCTIONS

1. Read these instructions.
2. Keep these instructions.
3. Heed all warnings.
4. Follow all instructions.
5. Do not use this apparatus near water.
6. Clean only with a dry cloth.
7. Do not block any ventilation openings. Install in accordance with the manufacturer's instructions.
8. Do not install near any heat sources such as radiators, heat registers, stoves, or other apparatus (including amplifiers) that produce heat.
9. Do not defeat the safety purpose of the polarized or grounding-type plug. A polarized plug has two blades with one wider than the other. A grounding type plug has two blades and a third grounding prong. The wide blade or the third prong are provided for your safety. When the provided plug does not fit into your outlet, consult an electrician for replacement of the obsolete outlet.
10. Protect the power cord from being walked on or pinched particularly at plugs, convenience receptacles, and the point where they exit from the apparatus.
11. Only use attachments/accessories specified by the manufacturer.
12. Use only with a cart, stand, tripod, bracket, or table specified by the manufacturer, or sold with the apparatus. When a cart is used, use caution when moving the cart/apparatus combination during lightning storms or when unused for long periods of time.



13. Unplug the apparatus during lightning storms or when unused for long periods of time.
14. Refer all servicing to qualified service personnel. Servicing is required when the apparatus has been damaged in any way, such as power supply cord or plug is damaged, liquid has been spilled or objects have fallen into the apparatus, the apparatus has been exposed to rain or moisture, does not operate normally, or has been dropped.
15. WARNING: The mains plug is used as a disconnect device, the disconnect device shall remain readily operable.
16. WARNING: To reduce the risk of fire or electric shock, do not expose this apparatus to rain or moisture. The apparatus shall not be exposed to dripping or splashing, and objects filled with liquids, such as vases, shall not be placed on apparatus.
17. This equipment is a Class II or double insulated electrical appliance. It has been designed in such a way that it does not require a safety connection to electrical earth.

ADDITIONAL WARNINGS & PRECAUTIONS

- Battery shall not be exposed to excessive heat such as sunshine, fire or the like. Danger of explosion if battery is incorrectly replaced. Replace only with the same or equivalent type.
- Batterie (batterie ou piles installées) ne doit pas être exposée à une chaleur excessive comme le soleil, le feu, etc. Danger of explosion si la pile n'est pas remplacée correctement. Ne remplacer que par le même type ou un type équivalent.

CAUTION: TO PREVENT ELECTRIC SHOCK, MATCH WIDE BLADE OF PLUG TO WIDE SLOT FULLY INSERT.

CAUTION: Use of controls or adjustments or performance of procedures other than those specified may result in hazardous radiation exposure.

WARNING: Changes or modifications to this unit not expressly approved by the party responsible for compliance could void the user's authority to operate the equipment.

WARNING: Do not place this unit directly onto furniture surfaces with any type of soft, porous, or sensitive finish. As with any rubber compound made with oils, the feet of this unit may cause marks or staining where they reside. We recommend using a protective barrier such as a cloth or a piece of glass between the unit and the surface to reduce the risk of damage and/or staining.

WARNING: Use of this unit near fluorescent lighting may cause interference regarding use of the remote. If the unit is displaying erratic behavior move away from any fluorescent lighting, as it may be the cause.

WARNING: Shock hazard - Do Not Open.

WARNING: TO REDUCE THE RISK OF ELECTRIC SHOCK, DO NOT REMOVE COVER (OR BACK). NO USER-SERVICEABLE PARTS INSIDE. REFER SERVICING TO QUALIFIED SERVICE PERSONNEL.



The lightning flash with arrowhead symbol, within an equilateral triangle, is intended to alert the user of the presence of uninsulated "dangerous voltage" which may be sufficient to constitute a risk of electric shock to the person.

WARRANTY

This product as supplied and distributed new by AIT, Inc. ("AIT") to the original consumer purchaser is warranted by AIT against defects in material and workmanship for a period of one year from your date of purchase ("Warranty").

- in the unlikely event that this product is defective, or does not perform properly, you may within one year from your original date of purchase return it to the authorized service center for repair or exchange.
- TO OBTAIN WARRANTY SERVICE:**
- Call the Customer Support number located below, or go to our website portal to receive an SRQ number.
 - Provide proof of the date of purchase within the package (Dated bill of sale).
 - Prepay all shipping costs to the authorized service center, and remember to insure your return.
 - Include a return shipping address (no P.O. Boxes), a telephone contact number, and the defective unit within the package.
 - Describe the defect or reason you are returning the product.

Your product will be repaired or replaced, at our option, for the same or similar model of equal value if examination by the service center determines this product is defective. Products received damaged as a result of shipping, will require you to file a claim with the carrier.

The shipping address of the authorized service center is:

AIT, Inc.
ATTN: Customer Service (2nd Floor)
14-C 53rd Street
Brooklyn, NY 11232

IN NO EVENT WILL AIT, ITS MANUFACTURERS, DISTRIBUTORS OR P.L.R.P. HOLDINGS, LLC BE LIABLE FOR ANY INCIDENTAL, DIRECT, INDIRECT, SPECIAL, PUNITIVE OR CONSEQUENTIAL DAMAGES SUCH AS, BUT NOT LIMITED TO, DAMAGES FOR LOSS OF PROFITS, BUSINESS, SAVINGS, DATA OR RECORDS RELATED TO THIS PRODUCT, EXCEPT AS STATED HEREIN. NO OTHER WARRANTIES SHALL APPLY.



Questions? Need some help? We need your help to help you get your product.



If you still have questions, call us help line 1-877-768-6481



or visit us at: www.southernradio.com call us "Product Support"

This device complies with Part 15 of the FCC Rules. Operation is subject to the following two conditions: (1) this device may not cause harmful interference, and (2) this device must accept any interference received, including interference that may cause undesired operation.

Note: This equipment has been tested and found to comply with the limits for a Class B digital device pursuant to part 15 of the FCC Rules. These limits are designed to provide reasonable protection against harmful interference in a residential installation. This equipment generates, uses and can radiate radio frequency energy and, if not installed and used in accordance with the instructions, may cause harmful interference to radio communications. However, there is no guarantee that interference will not occur in a particular installation. If this equipment does cause harmful interference to radio or television reception, which can be determined by turning the equipment off and on, the user is encouraged to try to correct the interference by one or more of the following measures:

- Reorient or relocate the receiving antenna.
- Increase the separation between the equipment and receiver.
- Connect the equipment into an outlet on a circuit different from that to which the receiver is connected.
- Consult the dealer or an experienced radio/TV technician for help.