

Battery Information

Please follow these simple guidelines to get the best use out of your battery.

New Battery

Always completely discharge, then fully charge, a new battery (see *“Battery FAQ”* on page D - 26 for instructions on how to do this).

Battery Life

Your computer’s battery life is dependent upon many factors, including the programs you are running, and peripheral devices attached. **Power Options** (you may set low battery **Alarms** and actions, and check the **Power Meter** from the **Power Options** control panel), and settings in the OS will help prolong the battery life if configured appropriately.



Low Battery Warning

When the battery is critically low, immediately connect the AC/DC adapter to the computer or save your work, otherwise, the unsaved data will be lost when the power is depleted.

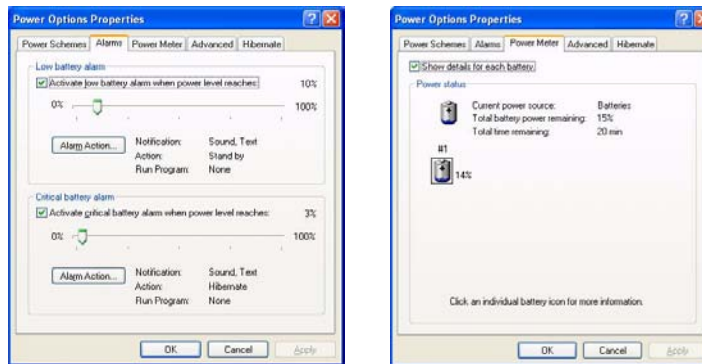


Figure D - 15
Power Options
(Alarm & Power
Meter)

Windows XP Information

Battery life may be shortened through improper maintenance. **To optimize the life and improve its performance, fully discharge and recharge the battery at least once every 30 days.**

We recommend that you do not remove the battery yourself. If you need to remove the battery for any reason, see *“Removing the Battery” on page 6 - 3.*

Recharging the Battery with the AC/DC Adapter

The battery pack automatically recharges when the AC/DC adapter is attached and plugged into an electrical outlet. If the computer is powered on, and in use, it will take several hours to fully recharge the battery. When the computer is turned off but plugged into an electrical outlet, battery charge time is less. (Refer to *“LED Indicators” on page 1 - 7* for information on the battery charge status, and to *“Battery Information” on page D - 23* for more information on how to maintain and properly recharge the battery pack.)



Conserving Battery Power

To conserve battery power:

Lower the brightness level of the LCD display. The system will decrease LCD brightness slightly to save power when it is not powered by the AC/DC adapter.

Close modem or communication applications when they are not being used.

Remove any unused PC Cards from the computer (PC Cards quickly use up battery power even if the system enters sleep mode).

Disconnect any unnecessary external devices.

Proper handling of the Battery Pack

- DO NOT disassemble the battery pack under any circumstances
- DO NOT expose the battery to fire or high temperatures, it may explode
- DO NOT connect the metal terminals (+, -) to each other



Damaged Battery Warning

Should you notice any physical defects (e.g. the battery is bent out of shape after being dropped), or any unusual smells emanating from the notebook battery, shut your computer down immediately and contact your service center. If the battery has been dropped we do not recommend using it any further, as even if the computer continues to work with a damaged battery in place, it may cause circuit damage, which may possibly result in fire. It is recommended that you replace your computer battery every two years.



Caution

Danger of explosion if battery is incorrectly replaced.

Replace only with the same or equivalent type recommended by the manufacturer. Discard used battery according to the manufacturer's instructions.

Battery FAQ

How do I completely discharge the battery?

Use the computer with battery power until it shuts down due to a low battery. Don't turn off the computer by yourself even when you see a message that indicates the battery is critically low, just let the computer use up all of the battery power and shut down on its own. Disable the **Power Options** functions in the **Control Panel**, especially any **Alarms** (**unclick** the tickboxes - see page [D - 23](#)) and **Schemes** (change all the settings to **Never** - see page [D - 18](#)). As the battery nears the end of its life save and close any critical files.

How do I fully charge the battery?

When charging the battery, don't stop until the LED charging indicator light changes from orange to green.

How do I maintain the battery?

Completely discharge and charge the battery at least once every 30 days or after about 20 partial discharges.

Driver Installation

Insert the *Device Drivers & Utilities + User's Manual CD-ROM*, click *Install WinXP Drivers/Install Option Drivers* (button) and then click the appropriate driver name from the *Drivers Installer* menu. Follow the instructions to install the driver. Alternatively click **Start**, navigate (**Browse..**) to the executable file and then follow the manual setup instructions.

1. Check the driver installation order from [Table 5](#) (the **drivers must be installed in this order**) which is the same as that listed in the *Drivers Installer* menu below.
2. Click to select the driver you wish to install, after installing each driver it will become greyed out (if you need to reinstall any driver, click the **Unlock** button).
3. Follow the instructions for each individual driver installation procedure as listed on the following pages.



Figure 5 - Drivers Installer Screen 1



Figure 6 - Drivers Installer Screen 2

Windows XP Information

WinXP SP2 Driver	Page #	Driver Location	Notes
Chipset	Page D - 30	X:\Drivers\Chipset\Setup.exe	<p>Manual Driver Installation</p> <p>If you wish to install the drivers manually, click the Exit button to quit the Drivers Installer application, and then browse to the executable file in the location listed in this table, and follow the installation procedure for each driver. Note that X is the drive letter assigned to the CD/DVD-ROM drive.</p>
Video	Page D - 30	X:\Drivers\Video\Setup.exe	
Audio	Page D - 30	X:\Drivers\Audio\Setup.exe	
Modem	Page D - 30	X:\Drivers\Modem\setup.exe	
LAN	Page D - 30	X:\Drivers\Lan\setup.exe	
TouchPad	Page D - 31	X:\Drivers\TouchPad\Setup.exe	
CardReader	Page D - 31	X:\Drivers\CardReader\Setup.exe	
Fingerprint Reader	Page D - 31	X:\Drivers\Fingerprint\Application\x86\autorun.exe	
Hot Key	Page D - 31	X:\Drivers\Hotkey\Setup.EXE	
Bluetooth Module	Page D - 32	X:\Drivers\Options\Bluetooth\Setup.exe	
PC Camera Module	Page D - 36	X:\Drivers\Options\Camera\Sertek\Setup.exe (for 1.3M pixel Camera) X:\Drivers\Options\Camera\Dmax\Setup.exe (for 2.0M pixel Camera)	
WLAN Module	Page D - 43	X:\Drivers\Options\WLAN\Intel\Autorun.exe	
TPM Security Chip	Page D - 49	X:\Drivers\Options\TPM\setup.exe	
3.5G Module	Page D - 51	X:\Drivers\Options\3G\3G_Watcher\3G_Watcher_Generic.msi	

Table 5 - Driver Installation

Updating/Reinstalling Individual Drivers

If you wish to update/reinstall individual drivers it may be necessary to uninstall the original driver. To do this go to the **Control Panel** in the *Windows OS* and double-click the **Add/Remove Programs** item. **If you see the individual driver listed** (if not see below), uninstall it, following the on screen prompts (it may be necessary to restart the computer). Go to the appropriate section of the manual to complete the update/reinstall procedure for the driver in question.

If the driver is not listed in the **Add/Remove Programs** item:

1. Click **Start** (menu), point to **Settings** and click **Control Panel** (or click **Start > Control Panel**).
2. Double-click **System** (icon); System (icon) is in **Performance and Maintenance** (category).
3. Click **Hardware** (tab) > **Device Manager** (button).
4. Double-click the **device** you wish to update/reinstall the driver for (you may need to click "+").
5. Look for the **Update Driver** button (check the **Driver** tab) and follow the on screen prompts.



Windows XP Service Pack 2

Make sure you install **Windows XP Service Pack 2** (or a Windows XP version which includes Service Pack 2) **before installing any drivers**. Service Pack 2 includes support for **USB 2.0**.

If you have **upgraded** the system by installing **Service Pack 2** (i.e. your Windows XP version does not include Service Pack 2) then follow these instructions:

1. Click **Start** (menu), point to **Settings** and click **Control Panel** (or click **Control Panel**).
2. Double-click **System** (icon); **System** (icon) is in **Performance and Maintenance** (category).
3. Click the **Hardware** (tab) > **Device Manager** (button).
4. Click "+" next to **Other Devices** (if its sub-items are not shown).
5. Right-click **Universal Serial Bus (USB) Controller** and select **Uninstall > OK** (if you don't see the item then there is no need to take any further action).
6. Restart the computer and it will find the USB 2.0 controller.

Driver Installation Procedure

Chipset

1. Click **1.Install Chipset Driver > Yes**.
2. Click **Next > Yes > Next > Next**.
3. Click **Finish** to restart the computer.

Video

1. Click **2.Install Video Driver > Yes**.
2. Click **Next > Yes > Next > Next**.
3. Click **Finish** to restart the computer.

Audio

1. Click **3.Install Audio Driver > Yes**.
2. Click **Next**.
3. Click **Finish** to restart the computer.

Modem

1. Click **4.Install Modem Driver > Yes**.
2. Click **OK**.
3. The modem is ready for dial-up configuration.



Modem Country Selection

Be sure to check if the modem country selection is appropriate for you (**Control Panel > Phone and Modem Options**).

LAN

1. Click **5.Install LAN Driver > Yes**.
2. Click **Next**.
3. Click **Install > Finish**.
4. The network settings can now be configured.

TouchPad

1. Click **6.Install Touchpad Driver > Yes.**
2. Click **Next > Next > Next.**
3. Click **Finish** to restart the computer.

CardReader

1. Click **7.Install Cardreader Driver > Yes.**
2. Click **Next > Next.**
3. Click **Finish** to restart the computer.

Fingerprint Reader Module

See *“Fingerprint Reader Driver Installation” on page D - 46.*

Hot Key

1. Click **9.Install Hotkey Utility > Yes.**
2. Click **Next > Install.**
3. Click **Finish > Finish** to restart the computer.

Module Drivers

See the following pages for the driver installation procedures for any of the optional modules included in your purchase configuration.

Wireless LAN, Bluetooth & 3.5G Modules



Wireless Device Operation Aboard Aircraft

The use of any portable electronic transmission devices aboard aircraft is usually prohibited. Make sure the module(s) are **OFF** if you are using the computer aboard aircraft.

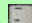




Wireless LAN, Bluetooth & 3.5G Modules Power Toggle

Enable power to the modules as follows:

Fn + F11 = Wireless LAN Module Power Toggle

Fn + F12 = Bluetooth Module Power Toggle

Fn +  = 3.5G Module Power Toggle

The LED indicator  will be **green** if the WLAN module is on, and **orange** if the Bluetooth module is on. The LED indicator  will be **green** if the 3.5G module is on.



Wireless Device Operation Aboard Aircraft


The use of any portable electronic transmission devices aboard aircraft is usually prohibited. Make sure the module(s) are OFF if you are using the computer aboard aircraft.

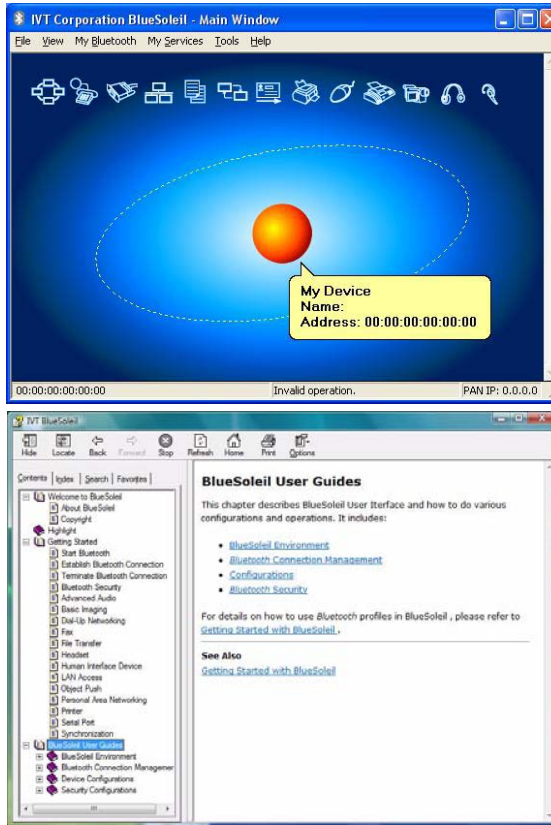
Use the **Fn + F12** key combination to toggle power to the Bluetooth module, and check the indicator to see if the module is powered on or not (see [Table 1 - 5, on page 1 - 10](#)/[Table 1 - 2, on page 1 - 7](#)).

Bluetooth Module

Before installing the optional **Bluetooth** module driver use the **Fn + F12** key combination to toggle power to the module.

Bluetooth Driver Installation

1. Make sure the module is powered on, and then insert the *Device Drivers & Utilities + User's Manual CD-ROM* into the CD/DVD drive.
2. Click **Install Option Drivers** (button).
3. Click **1.Install Bluetooth Driver** (button).
4. Click **Install Software Drivers v2.3.0.1**.
5. Choose the language you prefer, and click **OK**.
6. Click **Next**.
7. Click the button to accept the license agreement, then click **Next**.
8. Click **Next > Next > Install**.
9. Click **Finish**.
10. The **IVT Corporation BlueSoleil - Main Window** screen appears on restart.
11. You can configure the settings at any time by going to the **IVT Corporation BlueSoleil - Main Window** control panel (**Start > Programs/All Programs > IVT BlueSoleil**), or by clicking the taskbar icon .
12. View the BlueSoleil User Guides from the **Help** Menu (press **F1**) in the **IVT Corporation BlueSoleil - Main Window** control panel.



User Guide

View the BlueSoleil User Guides (Contents and Index) from the **Help** menu (or press the **F1** key) in the **IVT Corporation BlueSoleil - Main Window** control panel. Click **BlueSoleil User Guides** in the **Contents** tab, and click to select the appropriate User Guide from the panel on the right.

Figure D - 1

Bluetooth Control Panel & User Guides



Disconnecting

In order to have the taskbar icon display the correct connection status, you will need to exit the **IVT Corporation BlueSoleil - Main Window** by clicking the **File** menu and selecting **Exit** (see over).



After exiting the program you can then use the **Fn + F12** key combination to turn off the Bluetooth module.

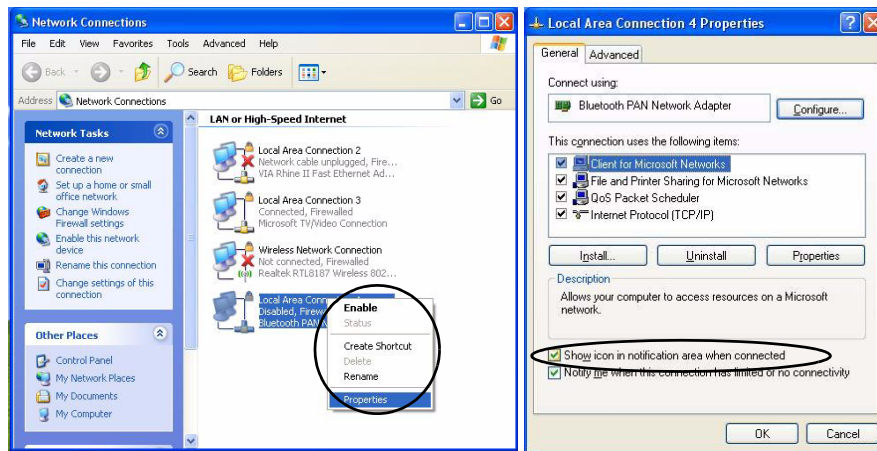
If you use the close button, or turn off the Bluetooth module (by using the **Fn + F12**) the taskbar icon will not display the correct status

Figure D - 2
Local Area Connection

Bluetooth Local Area Connection Icon

If you want to display the Local Area Connection icon for the Bluetooth connection in the taskbar, set it up as follows:

1. Access the **Network Connections** control panel in **Windows (Start > Settings > Network Connections OR Start > Connect To > Show all Connections)** or by clicking the taskbar icon .
2. Right-click the Bluetooth connection icon, and select **Properties**.
3. Click to put a tick in the **“Show icon in the notification area when connected”** box.
4. Close the control panels and the icon  for the Bluetooth connection will be displayed in the taskbar when connected (see sidebar and overleaf).



5. Use the **Fn + F12** key combination to turn on the Bluetooth module.
6. Run the **IVT Corporation BlueSoleil** program from the desktop icon or **Start** menu.
7. The connection status will then be displayed.

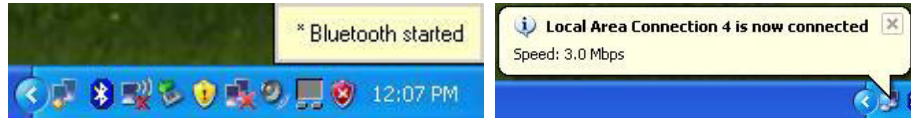



Figure D - 3 - Bluetooth Connected

8. To **disconnect** click **File** from the **IVT Corporation BlueSoleil - Main Window**, and select **Exit** (the Local Area Connection will then display "**A network cable is unplugged**").
9. Do not use the **close**  button or **Fn + F12** key combination before clicking **File > Exit** or the correct status will not be displayed.
10. You can then use the **Fn + F12** key combination to turn off the Bluetooth module (check the LED icon for the Bluetooth module power status).

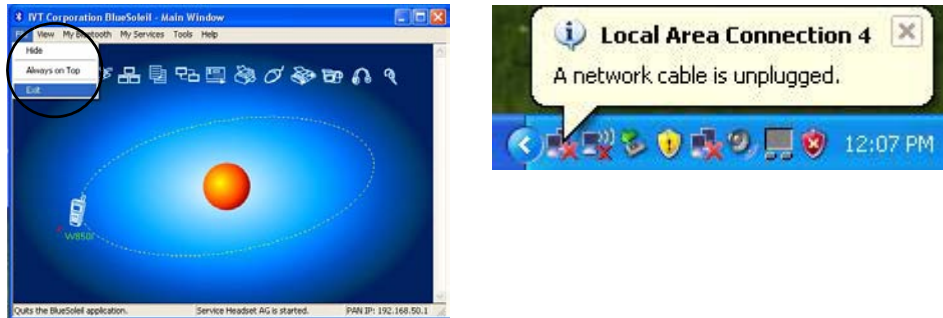


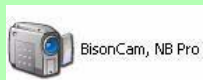
Figure D - 4 - Bluetooth Disconnected



Taking Still Pictures

Double-click the **My Computer** icon on the desktop, or go the **Start** menu and point to **My Computer**, then click it.

Double-click the **BisonCam, NB Pro** icon.



Click **Take a new picture** in the **Camera Tasks** box.

PC Camera Module

Before installing the optional **PC Camera** module driver use the **Fn + F10** key combination to toggle power to the module. There are 2 camera options available for this computer, depending on your purchase configuration. The **1.3M pixel camera** module uses the **BisonCap** application to capture video files, and the **2.0M pixel camera** module uses the **Video View** application to capture video files.

PC Camera Driver Installation

1. Make sure the module is powered on, and then insert the *Device Drivers & Utilities + User's Manual CD-ROM* into the CD/DVD drive.
2. Click **Install Option Drivers** (button).
3. Click **2.Install Camera Driver > Yes**.

For the 1.3M Pixel Camera Module:

1. Choose the language you prefer and click **OK > Next**.
2. Click **Finish** to restart the computer.
3. Run the **BisonCap** application program from the **BisonCam** shortcut on the desktop, or from the **BisonCam** item in the **Start > Programs/All Programs** menu (if the hardware is turned off use the **Fn + F10** key combination to turn it on again).

For the 2.0M Pixel Camera Module:

1. Click **Install**.
2. Click to select **Yes** or **No** in answer to the power system question.
3. Click to select **Yes** or **No** to enable/disable the **Digital Zoom** function.
4. Click **Finish > Finish** to restart the computer.
5. Run the **Video View** application program from the **Video View** shortcut on the desktop, or from the **USB2.0 PC Camera** item in the **Start > Programs/All Programs** menu (if the hardware is turned off use the **Fn + F10** key combination to turn it on again).

PC Camera Audio Setup (all camera modules)

If you wish to capture video & **audio** with your camera, it is necessary to setup the audio recording options in *Windows*.

1. Go to the **Start** menu and point to **Settings** (or just click **Control Panel**) and click **Control Panel**, then double-click the **Sounds & Audio Devices** icon (**Sounds, Speech, and Audio Devices** in Category View).
2. Click **Advanced** in the **Volume > Device volume** tab.
3. Click **Options** and scroll down and click **Properties**.
4. Select **Realtek HD Audio input** from the **Mixer device** menu.
5. Make sure the **Mic Volume** (check box) is checked, then click **OK**.
6. Boost the volume in the **Recording** section (in the Recording Control menu) as high as it will go.
7. Close the **Recording Control** window, and then click **OK**.
8. Run the **BisonCap** application program from the **Start > Programs/All Programs > BisonCam** menu.
9. Go to the **Devices** menu heading and select **Realtek HD Audio input** (it should have a tick alongside it).
10. Go to the **Capture** menu heading and select **Capture Audio** (it should have a tick alongside it).



Pre-Allocating File Space

You may pre-allocate the file size for the capture file in the **BisonCap** program. You can choose to ignore this by clicking **Cancel**.

Pre-allocating space on the hard disk can improve the capture quality (particularly of large capture files), by reducing the amount of work the hard disk has to do in finding space for the video data as it is being captured.

You may find it helpful to defragment the HDD before capture.

BisonCap (for 1.3M pixel camera modules)

BisonCap is a video viewer useful for general purpose video viewing and testing, and can capture video files to .avi format.

1. Run the **BisonCap** application from the **Start > Programs/All Programs > Bison-Cam** menu (it is recommended that you **set the capture file** before the capture process - **see Set Capture File below**).
2. Go to the **Capture** menu heading (if you wish to capture audio check **“PC Camera Audio Setup (all camera modules)” on page D - 37**) and select **Start Capture**.
3. On the first run of the program (if you have not set the captured file) you will be asked to choose a file name and size (**see the sidebar - Pre-Allocating File Space**) for the captured file. Click **Start Capture** again.
4. Click **OK** to start capturing the video, and press **Esc** to stop the capture.
5. If you wish to, you may go to the **File** menu and select **Save Captured Video As...**, choose a file name and location, and then click **Open** (you can view the file using the **Windows Media Player**).

Set Capture File

In the **BisonCap** program you will only be asked to set the capture file name on the first run of the program. When you run the program the next time the file will automatically be overwritten with the newly captured file. To avoid overwriting files you can go to the **Set Capture File..** option in the **File** menu, and set the file name and location before capture. Set the name and location then click **Open** (you can choose **Cancel** to ignore the file size if prompted).

Eliminating Screen Flicker (BisonCap)

If you find that the video screen in the **BisonCap** program is flickering, you can try to adjust the setting in the **Video Capture Filter** options.

1. Run the **BisonCap** application.
2. Go to **Options** and scroll down to select “**Video Capture Filter...**”.
3. Click either **50Hz** or **60Hz** under **Frequency** in **Property Page** (tab).

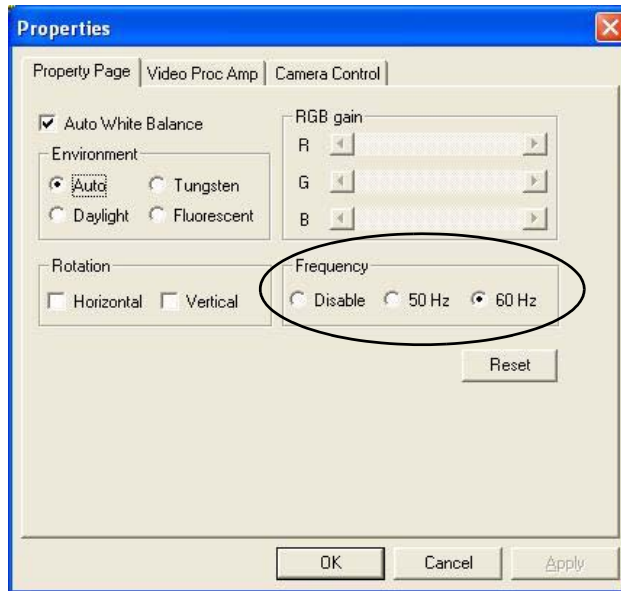


Figure D - 5
Video Capture Filter



Pre-Allocating File Space

You may pre-allocate the file size for the capture file in the **Video View** program.

Pre-allocating space on the hard disk can improve the capture quality (particularly of large capture files), by reducing the amount of work the hard disk has to do in finding space for the video data as it is being captured.

Video View (for 2.0M pixel camera module)

Video View is a video viewer useful for general purpose video viewing and testing, and can capture video files to .avi format.

1. Run the **Video View** program from the **Start > Programs/All Programs > USB2.0 PC Camera** menu (it is recommended that you **set the capture file** before the capture process - **see Set Capture File below**).
2. Go to the **Capture** menu heading (if you wish to capture audio check **“PC Camera Audio Setup (all camera modules)” on page D - 37**) and select **Start Capture**.
3. Click **OK** (the file location will be displayed in the pop-up box) to start capturing the video, and press **Esc** to stop the capture.

Set Capture File

Prior to capturing video files you may **Set Capture File...** To avoid overwriting files you can go to the **Set Capture File..** option in the **File** menu, and set the file name and location before capture. Set the name and location then click **Open** (you can choose **Cancel** to ignore the file size if prompted).

Eliminating Screen Flicker (Video View)

If you find that the video screen in the **Video View** program is flickering, you can try to adjust the setting in the **Video Capture Filter** options.

1. Run the **Video View** program.
2. Go to **Options** and scroll down to select **Video Capture Filter...**
3. Click either **50Hz** or **60Hz** under **Flickering Reduction in Image** (tab).

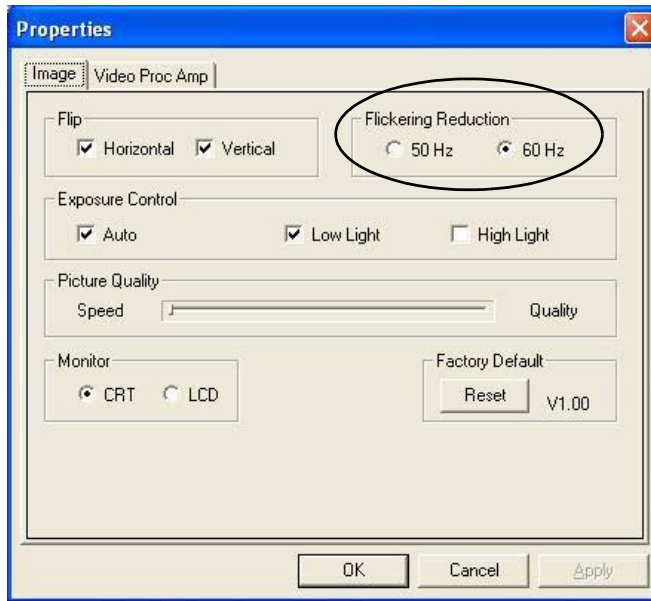


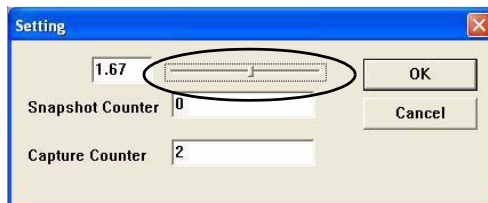
Figure D - 6
Video Capture Filter

Zoom (Video View)

If you have enabled digital zoom when installing the **2.0M Pixel Camera** driver you may use the **Options > Setting** menu to zoom the camera in and out.

Figure D - 7
Setting

1. Run the **Video View** program.
2. Go to **Options** and scroll down to select **Setting**.
3. Use the slider to adjust the zoom level, and click **OK** to save the setting.



Snapshot Folder

The Snapshot folder's default location is on the desktop. Do not move this folder or an error may appear when you try to take a still picture.

If you accidentally delete or move the folder, you can create a new Snapshot folder on the desktop in order to capture the files.

Still Image Capture (Video View)

You can capture still images by using the **Snapshot** command from the **Capture** menu.

1. Run the **Video View** program.
2. Go to **Capture** and select **Snapshot**.
3. The picture (in JPEG format) will be placed in the **Snapshot** folder on the desktop.



Figure D - 8
Snapshot Folder

WLAN Module

Before installing the Wireless LAN driver use the **Fn + F11** key combination to toggle power to the module.

Intel WLAN Driver Installation


1. Make sure the module is powered on, then insert the *Device Drivers & Utilities + User's Manual CD-ROM (WinXP)* into the CD/DVD drive.
2. Click **Install Option Drivers** (button).
3. Click **3.Install WLAN Driver > Yes**.
4. Click **Install Software** (button).
5. Click the button to accept the license and click **Next > Next > OK**.
6. Click **OK** to complete the installation.
7. Configure the settings by going to the **Intel (R) PROSet Wireless** control panel (**Start > Programs/ All Programs > Intel PROSet Wireless**), or by double-clicking the taskbar icon .



Figure D - 9 - Intel PROSet/Wireless

User Guide

You can view the User Guides from the *Device Drivers & Utilities + User's Manual CD-ROM (WinXP)*.

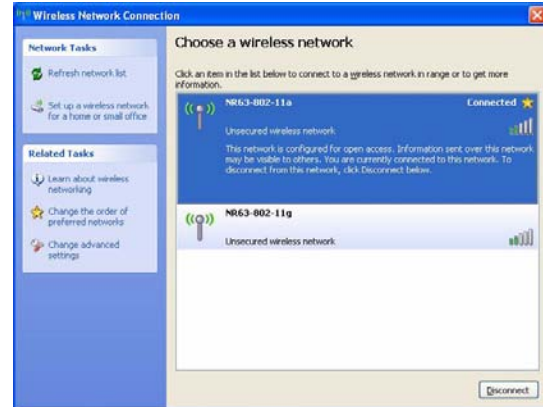
Click **Install Option Drivers** and then click the **Unlock** button. Click **3.Install WLAN Driver > Yes**. Click **View User Guide** (button).



Network Connection

Use the **Windows Network Connections** control panel to access available wireless networks (**Start > Settings > Network Connections** or **Start > Connect To > Show all Connections**).

Figure D - 10
Wireless Network Control Panels



Security Modules (Fingerprint & TPM)

The encrypted channel between the **Trusted Platform Module security chip** and the **optional fingerprint reader** with **Protector Suite Software** provides a high level of security for your computer. A further level of security and control is provided in the BIOS (see *“Security Menu” on page 5 - 10*).

The **fingerprint reader** and **Protector Suite Software** allow you to:

- Access or Lock your computer
- Protect sensitive files
- Display and file your favorite web pages
- Fill in frequently used dialogs
- Run your favorite applications

The **TPM security chip** allows you to create and manage digital certificates for user and platform authentication. This type of security is usually administered within large enterprises and organizations, and therefore requires implementation by a system administrator before users can access security features.

Individual users can use the TPM as an authentication with the fingerprint reader.

See overleaf for information installing and configuring the **Protector Suite Software**, and see *“Trusted Platform Module” on page 7 - 25* for information on TPM.




Password Warning

If you set passwords for any of the security modules, **NEVER** forget your password.

The consequences of this could be serious. If you cannot remember your boot password you must contact your vendor and you may lose all of the information on your hard disk.



Help & Manual

Right-click the taskbar icon  to bring up the menu to select **Help**.

Insert the *Device Drivers & Utilities + User's Manual CD-ROM* and click **Install WinXP Drivers** (button). Click **Unlock** (button) and then click **8.Install Fingerprint Driver > Yes**.

Click **Documentation** to open the folder containing the manual in .pdf format.

To install the Adobe Acrobat Reader software to read the file, insert the *Device Drivers & Utilities + User's Manual CD-ROM* and click **User's Manual** (button), and click **Install Acrobat Reader** (button).

Fingerprint Reader Module

If you have included the fingerprint reader in your purchase option you will need to install the driver as per the instructions below.


Make sure you have administrator's rights to your computer, and have a *Windows* password enabled for full security protection.

Before beginning the enrollment process it is recommended that you go through the fingerprint tutorial. To run the tutorial click **Start > Programs/All Programs > Protector Suite QL > Fingerprint Tutorial** after installing the driver.

Fingerprint Reader Driver Installation

1. Insert the *Device Drivers & Utilities + User's Manual CD-ROM (WinXP)* into the CD/DVD drive.
2. Click **Install WinXP Drivers**.
3. Click **8.Install Fingerprint Driver > Yes**.
4. Click **Software Installation**.
5. Click **Next > Next > Next**.
6. Click **Finish > Yes** to restart the computer.
7. See overleaf for information on enrolling fingerprints etc.

User Enrollment

1. Click **Start > Programs/All Programs > Protector Suite QL > User Enrollment**, or double click the taskbar icon .
2. On the first run of the program you will be asked to click the button to accept the license, and then click **OK**.
3. Click **Next** and select "**Enrollment to the hard disk**", and click **Finish**.
4. Click **Next** and you will then be prompted to enter your **Windows** password (**note**: If you have not set a password **Protector Suite QL** cannot secure access to your computer).
5. Click **Next > Next** (tick the "**Run interactive tutorial**" tickbox to run through the Fingerprint Tutorial).
6. Click **Next** for each window of the tutorial (you can click the button to "**skip tutorial**" at any time).
7. Click the button above any of the fingers to begin the enrollment process for that finger.
8. Swipe the finger three times to enroll that finger.
9. Repeat the process for all the fingers you wish to enroll (see below), and then click **Next**.

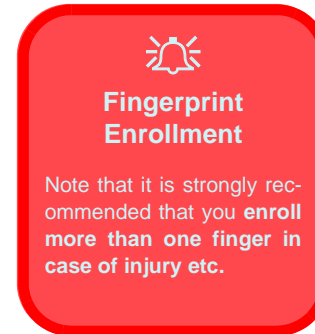
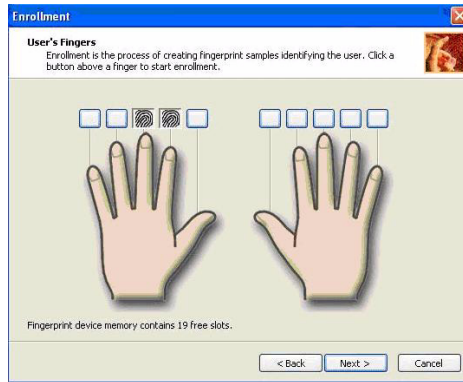


Figure D - 11 - Fingerprint Enrollment

Windows XP Information


10. If you put a tick in the “**Enable Advanced Security for the current user**” tickbox you will be asked to input a PIN before continuing (choose TPM key with PIN and enable and create a backup password).
11. Click **Next > Finish**.
12. Right-click the taskbar icon  to bring up the menu that allows you to **Edit Fingerprints**, start **Control Center**, access the **Help** menu etc. You can also run the **Control Center** etc. from the **Protector Suite QL** item in the **Programs/All Programs** menu.
13. See “[Help & Manual](#)” on page **D - 46** for further details.
14. If you swipe your finger over the reader at any time you can access the **Biomenu** to **lock the computer**, **register websites**, open the **Control Center** and access the **Help** menu.



Figure D - 12 - Control Center & Biomenu

TPM Security Chip

If you have included the **Trusted Platform Module security chip** module in your purchase **option**, you will have the appropriate software provided on the *Device Drivers & Utilities + User's Manual CD-ROM (WinXP)*. After installing the driver as per the instructions below, see *“Trusted Platform Module” on page 7 - 17* for full instructions on initializing the TPM etc.

TPM Utility Installation

1. Enable the TPM state in the BIOS (see *“Initializing TPM” on page 7 - 17*).
2. Insert the *Device Drivers & Utilities + User's Manual CD-ROM (WinXP)* into the CD/DVD drive.
3. Click **Install Option Drivers** (button).
4. Click **4.Install TPM Driver > Yes**.
5. Click **Next**.
6. Click the button to accept the license agreement, and then click **Next**.
7. Click **Next > Next > Install**.
8. Click **Finish** (you may then go straight to the initialization process if you have checked the option).
9. Run the **TPM** application program from the shortcut on the desktop, or from the **TPM Secure Tools** item in the **Start > Programs/All Programs** menu.
10. See overleaf for instructions on initializing the TPM.



Password Warning

Do not lose the password. If you do so you will be unable to make administrative changes unless you clear the TPM. This could then result in data loss.

Recovery Token

Note the location of the emergency recovery token. It is recommended that you save the file to removable media such as a USB Flash drive (or backup using the tool provided - see page 7 - 28).


Initializing TPM

On the first run of the program you will need to initialize the TPM.





1. Run the application from the Security Manager shortcut on the desktop, or from the TPM Secure Tools item in the Start > Programs/All Programs menu.
2. Click **Next**.
3. Type a **TPM owner password**, and then retype to confirm the password.
4. Click **Next** to create a **recovery token** (see sidebar).
5. Click **Next** and create a **password reset token** file if required.
6. Click **Next** and specify a location for the emergency recovery data path (a root path to restore user keys if you need to reinstall the OS).
7. Click **Next > Next** to begin the Initialization process.
8. Click **Finish** to begin the user initialization.
9. Click **Next**, and type a **TPM user password**, and then retype to confirm the password.
10. Click **Next** and create a **password reset secret** file if required (click in the tickbox).
11. Click **Next > Next** to begin the user Initialization process.
12. Click **Finish** (it is recommended that you use the **Backup and Restore** module to make a backup).
13. Enter the user password and click **Logon**.
14. For further details on using the **Security Manager** see *[“TPM Manager” on page 7 - 22](#)*.

3.5G Module

If you have included an optional **3.5G module** in your purchase option follow the instructions *on page 7 - 37* to install the USIM card (which will be provided by your service provider), and then install the application.

Before installing the application, make sure that the 3.5G module is on. Use the **Fn + ** key combination (see *“Function/Hot Key Indicators” on page 1 - 10*) to toggle power to the 3.5G module.

3G Watcher Application Installation

1. Make sure the module is powered on, and then insert the *Device Drivers & Utilities + User's Manual CD-ROM (WinXP)* into the CD/DVD drive.
2. Click **Install Option Drivers** (button).
3. Click **Install 3G Watcher > Yes**.
4. Click **Next**.
5. Choose your region, and click **Next**.
6. Click the button to accept the license agreement, and then click **Next**.
7. Click **Next > Install**.
8. Click **Finish**, and the **3G Watcher** icon  will appear on the desktop.
9. You can access the **3G Watcher** application from the **Start** menu (**Start > Programs/All Programs > Sierra Wireless > 3G Watcher**), or by clicking the desktop icon .
10. Make sure you enable power to the module by pressing the **Fn + ** key combination (the icon  will be green).
11. See *“Setting Up a Carrier Profile” on page 7 - 41* and *“Connecting to the Service Provider” on page 7 - 43* for instructions on using the **3G Watcher** application.

