



Pre-Allocating File Space

You may pre-allocate the file size for the capture file in the **Video View** program.

Pre-allocating space on the hard disk can improve the capture quality (particularly of large capture files), by reducing the amount of work the hard disk has to do in finding space for the video data as it is being captured.

Video View (for 2.0M pixel camera module)

Video View is a video viewer useful for general purpose video viewing and testing, and can capture video files to .avi format.

1. Run the **Video View** program from the **Start > Programs/All Programs > USB2.0 PC Camera** menu (it is recommended that you **set the capture file** before the capture process - **see Set Capture File below**).
2. Go to the **Capture** menu heading (if you wish to capture audio check **“PC Camera Audio Setup (all camera modules)” on page 7 - 4**) and select **Start Capture**.
3. Click **OK** (the file location will be displayed in the pop-up box) to start capturing the video, and press **Esc** to stop the capture.

Set Capture File

Prior to capturing video files you may **Set Capture File...** To avoid overwriting files you can go to the **Set Capture File..** option in the **File** menu, and set the file name and location before capture. Set the name and location then click **Open** (you can choose **Cancel** to ignore the file size if prompted).

Eliminating Screen Flicker (Video View)

If you find that the video screen in the **Video View** program is flickering, you can try to adjust the setting in the **Video Capture Filter** options.

1. Run the **Video View** program.
2. Go to **Options** and scroll down to select **Video Capture Filter...**
3. Click either **50Hz** or **60Hz** under **Flickering Reduction in Image** (tab).

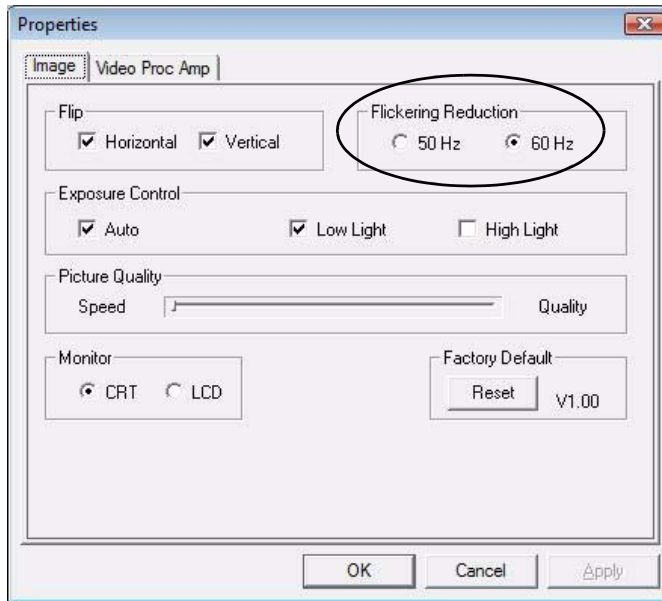


Figure 7 - 3
Video Capture Filter

Zoom (Video View)

If you have enabled digital zoom when installing the **2.0M Pixel Camera** driver you may use the **Options > Setting** menu to zoom the camera in and out.

Figure 7 - 4
Setting

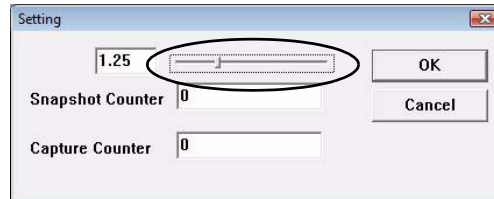


Snapshot Folder

The Snapshot folder's default location is on the desktop. Do not move this folder or an error may appear when you try to take a still picture.

If you accidentally delete or move the folder, you can create a new Snapshot folder on the desktop in order to capture the files.

1. Run the **Video View** program.
2. Go to **Options** and scroll down to select **Setting**.
3. Use the slider to adjust the zoom level, and click **OK** to save the setting.



Still Image Capture (Video View)

You can capture still images by using the **Snapshot** command from the **Capture** menu.

1. Run the **Video View** program.
2. Go to **Capture** and select **Snapshot**.
3. The picture (in JPEG format) will be placed in the **Snapshot** folder on the desktop.



Figure 7 - 5
Snapshot Folder

802.11 b/g USB WLAN Module

If you have included an **802.11b/g USB Wireless LAN** module in your purchase option, you will have the appropriate software provided for your module.

Before installing the **802.11b/g USB WLAN** driver, make sure that the Wireless LAN module is on. Use the **Fn + F11 key combination** (see *“Function Keys” on page 1 - 10*) to toggle power to the Wireless LAN module. Make sure you install the drivers in the order indicated in *Table 4 - 1, on page 4 - 3*.

802.11 b/g WLAN Driver Installation

1. Make sure the module is powered on, and then insert the *Device Drivers & Utilities + User’s Manual CD-ROM* into the CD/DVD drive.
2. Click **Optional** (button).
3. Click **2.Wireless Lan > Yes**.
4. Click **Finish** to complete the installation.
5. The operating system is the default setting for Wireless LAN control in *Windows Vista* (see overleaf).



Wireless Device Operation Aboard Aircraft

The use of any portable electronic transmission devices aboard aircraft is usually prohibited. Make sure the module(s) are OFF if you are using the computer aboard aircraft.

Use the **Fn + F11** key combination to toggle power to the WLAN module, and check the indicator to see if the module is powered on or not (see *Table 1 - 5, on page 1 - 10 Table 1 - 2, on page 1 - 7*).

Connecting to a Wireless Network

Make sure the Wireless LAN module is turned on.



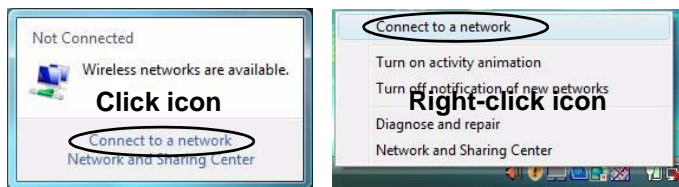
1. Click the taskbar wireless icon , and then click **Connect to a network** (or right-click the icon , and then click **Connect to a network**).

Figure 7 - 6
Taskbar Menus



2. In the **Show** list, click to choose **Wireless** from the drop-down menu.
3. A list of currently available networks will appear.

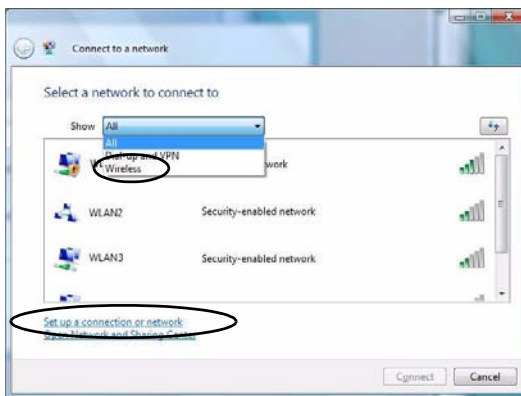


Figure 7 - 7
Connect to a
Network

Network and Sharing Center

You can also use the **Network and Sharing Center** control panel in Windows (**Network and Internet**) to connect to any available wireless networks.

4. Click a network, and then click **Connect**.
5. If you do not see a network you want to connect to, click **Set up a connection or network** (a list of options will appear allowing manual searching, and creating a new network).

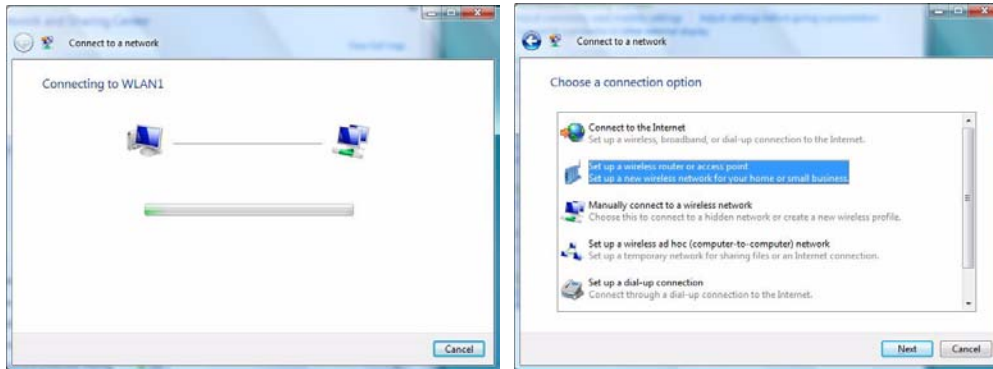


Figure 7 - 8
Connecting

6. Move the cursor over the taskbar icon  to see the connection status (see below).



Figure 7 - 9
Connection Status



Modules & Options



Security Enabled Networks

You should try to make sure that any network you are connecting to is a secure network.

Connecting to unsecure networks may allow unauthorized access to your computer, documents, web-sites and files etc.

- To disconnect from the wireless network you can click the taskbar wireless icon , and then select **Connect or disconnect** to access the network menu, and click Disconnect (or **right-click** the icon , and then click **Disconnect from**).

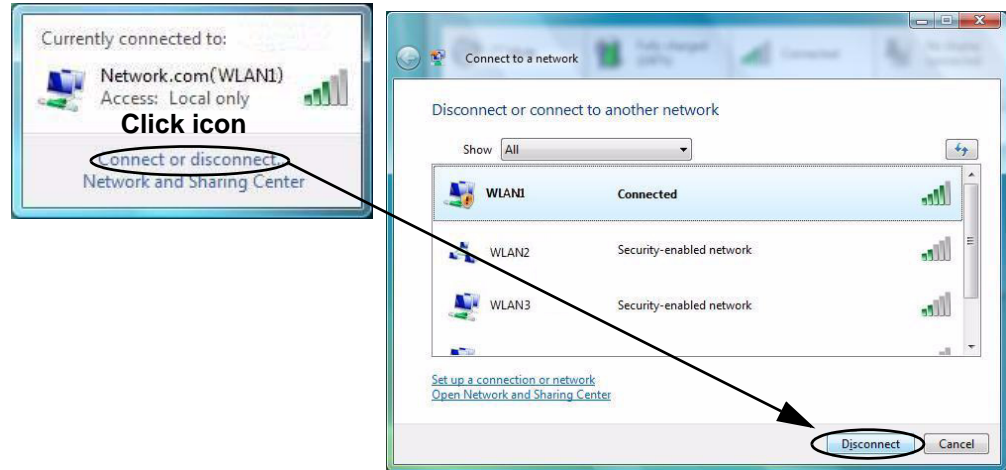
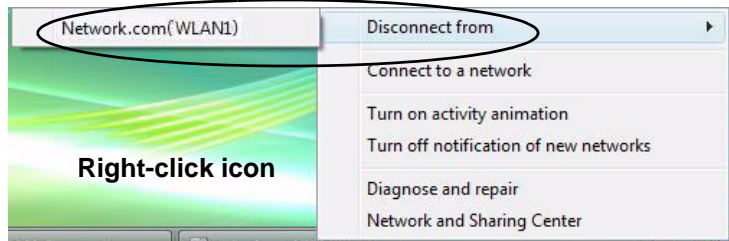



Figure 7 - 10
Disconnecting



Windows Mobility Center

The **Windows Mobility Center** control panel provides an easy point of access for information on battery status, power plans used and wireless device status etc.

To access the Windows Mobility Center:

1. Click **Start**, and click **Control Panel** (or point to **Settings** and click **Control Panel**).
2. Double-click **Windows Mobility Center (Mobile PC)**.
3. Click the button to **Turn wireless off/on**, or click the icon  to access the network menu.

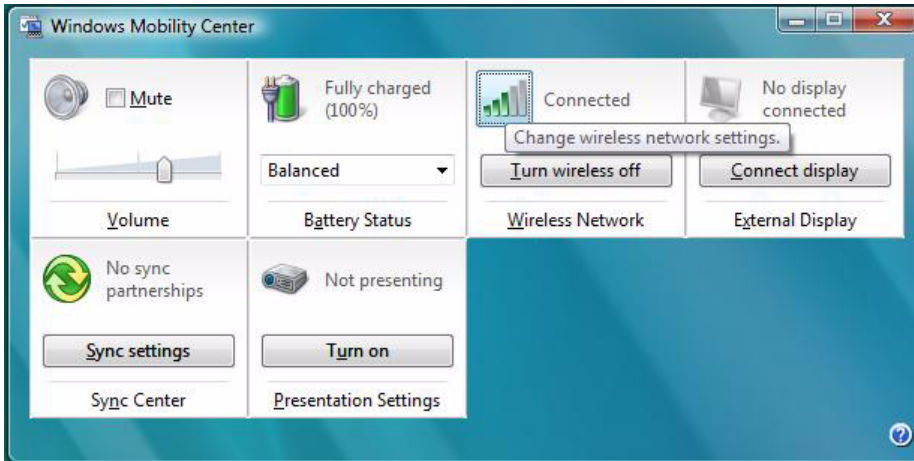


Figure 7 - 11
Windows Mobility Center



Wireless Device Operation Aboard Aircraft



The use of any portable electronic transmission devices aboard aircraft is usually prohibited. Make sure the module(s) are OFF if you are using the computer aboard aircraft.

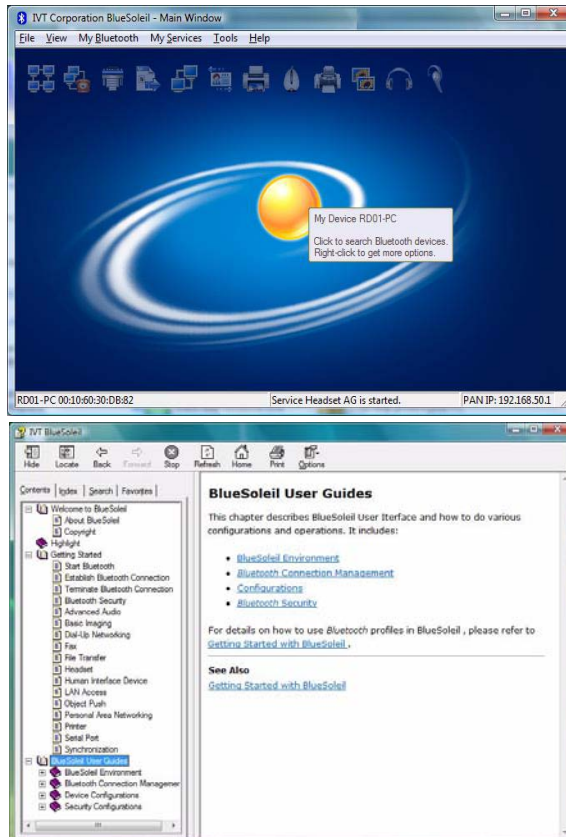
Use the **Fn + F12** key combination to toggle power to the Bluetooth module, and check the indicator to see if the module is powered on or not (see [Table 1 - 5, on page 1 - 10](#)/[Table 1 - 3, on page 1 - 7](#)).

Bluetooth Module

Before installing the **Bluetooth** driver, make sure that the optional Bluetooth module is on. Use the **Fn + F12** key combination (see “*Function Keys*” on [page 1 - 10](#)) to toggle power to the Bluetooth module. Make sure you install the drivers in the order indicated in [Table 4 - 1, on page 4 - 3](#).

Bluetooth Driver Installation

1. Make sure the module is powered on, and then insert the *Device Drivers & Utilities + User's Manual CD-ROM* into the CD/DVD drive.
2. Click **Optional** (button).
3. Click **3. Bluetooth > Yes**.
4. Choose the language you prefer, and click **OK > Next**.
5. Click the button to accept the license agreement, and then click **Next**.
6. Click **Next > Install**.
7. Click **Finish**, and the **BlueSoleil** icon  will appear on the desktop.
8. You can configure the settings at any time by going to the **IVT Corporation BlueSoleil - Main Window (Start > Programs/All Programs > IVT BlueSoleil > BlueSoleil)**, or by clicking the desktop icon .



User Guides & Help

View the BlueSoleil User Guides from the **Help** Menu (or press the **F1** key) in the **IVT Corporation BlueSoleil - Main Window** control panel.

Click the **Help** menu and select **Contents** and **Index**.

Look through **Getting Started** or select the appropriate **User Guide** from the **Contents** menu.

Figure 7 - 12
BlueSoleil Main Window & Help



Disconnecting

In order to have the Local Area Connection icon display the correct connection status, you will need to exit the **IVT Corporation BlueSoleil - Main Window** by clicking the **File** menu and selecting **Exit** (see over).

After exiting the program you can then use the **Fn + F12** key combination to turn off the Bluetooth module.

If you use the close button, or turn off the Bluetooth module (by using the **Fn + F12**) the icon will not display the correct status

Bluetooth Local Area Connection

You can check the Bluetooth connection status from the **Network and Sharing Center**:

1. Use the **Fn + F12** key combination to turn on the Bluetooth module.
2. Run the **IVT Corporation BlueSoleil** program from the desktop icon or **Start** menu.
3. Click **Start**, and click **Control Panel** (or point to **Settings** and click **Control Panel**).
4. Double-click **Network and Sharing Center** (**Network and Internet**).
5. Click **Manage network connections**.
6. The Bluetooth connection status will then be displayed in the control panel.

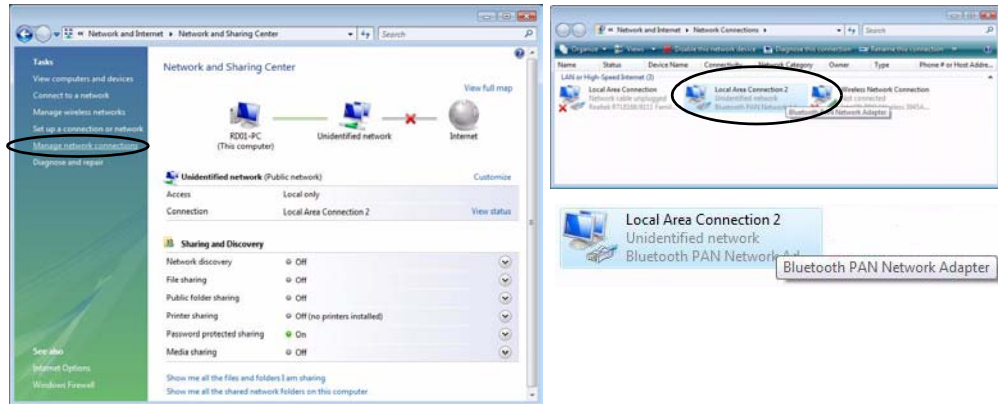


Figure 7 - 13

Local Area Connection

7. To **disconnect** click **File** from the **IVT Corporation BlueSoleil - Main Window**, and select **Exit** (the Local Area Connection will then display “**Network cable unplugged**”).


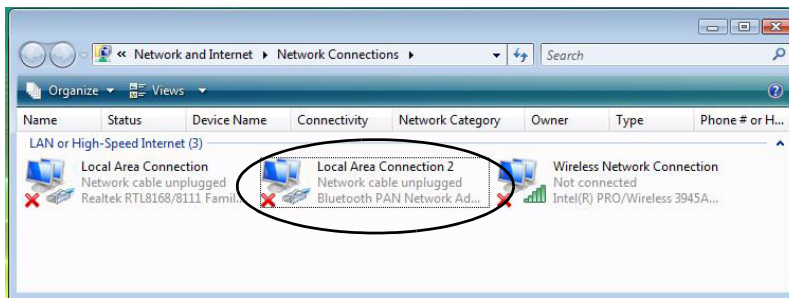
8. Do not use the **close**  button or **Fn + F12** key combination before clicking **File > Exit** or the correct status will not be displayed.
9. You can then use the **Fn + F12** key combination to turn off the Bluetooth module (check the LED icon for the Bluetooth module power status).



Figure 7 - 14
Bluetooth
Disconnected






Power Safety Warning

Before you undertake any installation procedures, make sure that you have turned off the power, and disconnected all peripherals and cables (including telephone lines). It is advisable to also remove your battery in order to prevent accidentally turning the machine on.

3.5G Module

If you have included an optional 3.5G module (see “*Communication*” on page A - 3 for specification details) in your purchase option, you will have the appropriate software provided for your module. Follow the instructions below to install the SIM card (which will be provided by your service provider), and then install the application.

Before installing the **application**, make sure that the 3.5G module is on. Use the **Fn + ** key combination (see “*Function Keys*” on page 1 - 10) to toggle power to the 3.5G module. Make sure you install the drivers in the order indicated in *Table 4 - 1, on page 4 - 3*.

1. Turn **off** the computer, and turn it over and **remove the battery**.
2. Locate the hard disk bay cover and remove screws **1** & **2**.
3. Remove the hard disk bay cover **3**.
4. Grip the tab and slide the hard disk in the direction of arrow **4** to remove it.



Figure 7 - 15
Hard Disk Removal

5. Insert the SIM card as you would into your mobile phone.
6. The 3.5G module **5** is pictured on the left, and the installed SIM card **6** on the right in *Figure 7 - 16*.



Figure 7 - 16
**Module and SIM
Card Location**

7. Slide the SIMLOCK in the direction of the arrow **7** (*Figure 7 - 17*) in order to release the lock and lift it up.



Figure 7 - 17
SIMLOCK Unlock

Modules & Options

8. Insert the SIM card as illustrated in ([Figure 7 - 18](#)) and close the SIMLOCK.

Figure 7 - 18
Insert the SIM Card



9. Close the SIMLOCK by pushing it in the direction of the arrow in [Figure 7 - 19](#).

Figure 7 - 19
SIMLOCK Lock







10. Replace the hard disk assembly, cover, screws and battery etc.

3G Watcher Application

With the 3.5G module and SIM card (provided by your service provider) installed you may then install the 3G Watcher application. The 3.5G Watcher application allows you to directly access your 3.5G internet service from the computer.


3G Watcher Application Installation

1. Make sure the module is powered on, and then insert the *Device Drivers & Utilities + User's Manual CD-ROM* into the CD/DVD drive.
2. Click **Optional** (button).
3. Click **4.3GWatcher > Yes**.
4. Click **Next**.
5. Choose your region, and click **Next**.
6. Click the button to accept the license agreement, and then click **Next**.
7. Click **Next > Install**.
8. Click **Finish**, and the **3G Watcher** icon  will appear on the desktop.
9. You can access the **3G Watcher** application from the **Start** menu (**Start > Programs/All Programs > Sierra Wireless > 3G Watcher**), or by clicking the desktop icon .
10. Make sure you enable power to the module by pressing the **Fn + _** ( key combination (the icon  will be green).



Wireless Device Operation Aboard Aircraft

The use of any portable electronic transmission devices aboard aircraft is usually prohibited. Make sure the module(s) are OFF if you are using the computer aboard aircraft.

Use the **Fn + _** ( key combination to toggle power to the 3.5G module, and check the indicator to see if the module is powered on or not (see [Table 1 - 3, on page 1 - 7](#)/[Table 1 - 5, on page 1 - 10](#)).



3G Watcher Online Help

For further details on the 3G Watcher application you can access the On-line Help from the **Help > Help Topics** menu.

Click on any topic from the **Contents** window to display details.

7

Connecting to the Service Provider

1. Power on the 3.5G module using the **Fn + ** key combination (the icon  will be green).
2. You can access the **3G Watcher** application from the **Start** menu (**Start > Programs/All Programs > Sierra Wireless > 3G Watcher**), or by clicking the desktop icon .
3. The software will run and display the service provider name (connection information is obtained from the SIM card).




4. Click **Connect**  to begin the connection process.
5. The **3G Watcher** application will then display the connection information in the window.



Figure 7 - 20
3G Watcher

Figure 7 - 21
Connecting

6. When the connection is successful a taskbar notification will appear (as below).



Figure 7 - 22
**Connected
Taskbar
Notification**





7. You can then access the internet, download e-mail etc. as per any internet connection.
8. While you are connected the taskbar icon will be green  (it will be red  when the program is running but not connected).
9. To disconnect click the **Disconnect**  icon.




Figure 7 - 23
**3GWatcher
Connected**

10. The program will disconnect from the service provider.
11. The module will still be on, and you will need to press the **Fn + ** key combination (the icon  will be off when disconnected).

- If you click the **3G Watcher** close icon  a message will be displayed asking you to click **OK** to confirm the program exit.

Figure 7 - 24
Exit Warning





- Exiting the program DOES NOT turn off the 3.5G module, and you will need to press the **Fn + _** () key combination to turn off the module (pay careful attention to this aboard aircraft - see *“Wireless Device Operation Aboard Aircraft” on page 7 - 23*).
- If the module is on and the computer enters a power-saving state, then the power status of the module on resuming from the power-saving state will be as below:
 - If the 3.5G module is on and the computer is **Shut Down**; the module will be **off** when the computer starts up.
 - If the 3.5G module is on and the computer enters **Sleep**; the module will be **on** when the computer resumes from sleep.
 - If the 3.5G module is on and the computer enters **Hibernate**; the module will be **off** when the computer starts up.
 - If the 3.5G module is on and you **Restart** the computer; the module will be **on** when the computer starts up.


Short Messaging Service

In addition to standard internet services you may also send and receive SMS text messages using the **3G Watcher** program.

Reading SMS Messages

1. The SMS message indicator  in the main window will notify you of any new messages received.
2. Double-click the icon  or select **Tools > SMS Express**.
3. Select the inbox folder and select any message to read it.
4. You cannot receive any new messages if the SIM card becomes full so you will need to delete some of the messages in order to free up space on the SIM card.


Creating and Sending SMS Messages

1. Double-click the icon  or select **Tools > SMS Express**.
2. Select **File > New Message** or click the **New** button.
3. Enter the recipient's number in the **To..** field or click the **To..** button to select an entry from the phone book, and click the **Message** button.
4. Type in the message details in the message body area.
5. Click the **Send** button (or save the message to send later).

For more details on SMS see **3GWatcher Online Help** from the **Help > Help Topics** menu.



Help & Manual

Right-click the taskbar icon  to bring up the menu to select **Help**.

Insert the *Device Drivers & Utilities + User's Manual CD-ROM* and click **Optional** (button). Click **Unlock** (button) and then click **5.Fingerprint > Yes**.

Click **Documentation** to open the folder containing the manual in .pdf format.

To install the Adobe Acrobat Reader software to read the file, insert the *Device Drivers & Utilities + User's Manual CD-ROM* and click **User's Manual** (button), and click **Install Acrobat Reader** (button).

Fingerprint Reader Module

If you have included the fingerprint reader in your purchase option you will need to install the driver as per the instructions below.


Make sure you have administrator's rights to your computer, and have a *Windows* password enabled for full security protection.

Before beginning the enrollment process it is recommended that you go through the fingerprint tutorial. To run the tutorial click **Start > Programs/All Programs > Protector Suite QL > Fingerprint Tutorial** after installing the driver.

Fingerprint Reader Driver Installation

1. Insert the *Device Drivers & Utilities + User's Manual CD-ROM* into the CD/DVD drive.
2. Click **Optional** (button).
3. Click **5.Fingerprint > Yes**.
4. Click **Software Installation**.
5. Click **Next > Next > Next**.
6. Click **Finish > Yes** to restart the computer.

User Enrollment

1. Click **Start > Programs/All Programs > Protector Suite QL > User Enrollment**, or double click the taskbar icon .
2. On the first run of the program you will be asked to click the button to accept the license, and then click **OK**.
3. Click **Next** and select “**Enrollment to the hard disk**”, and click **Finish**.

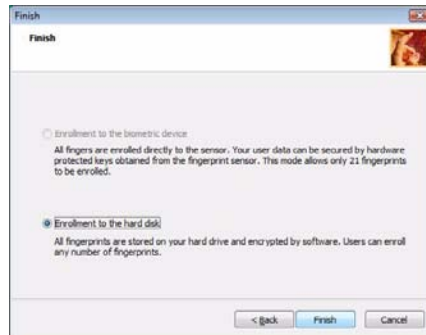


Figure 7 - 25
Enroll to Hard Disk

4. If you have not set a **Windows** password you will be prompted to do so (**note**: If you have not set a password **Protector Suite QL** cannot secure access to your computer).
5. Click **Next**.
6. You will then be prompted to enter your **Windows** password.
7. Click **Next > Next** (if you have the “**Run interactive tutorial**” tickbox selected you will run through the Fingerprint Tutorial).
8. Click **Next** for each window of the tutorial (you can click the button to “**skip tutorial**” at any time).

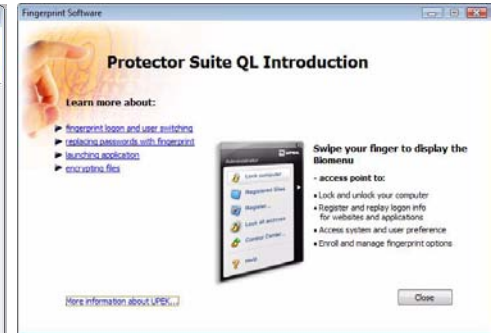
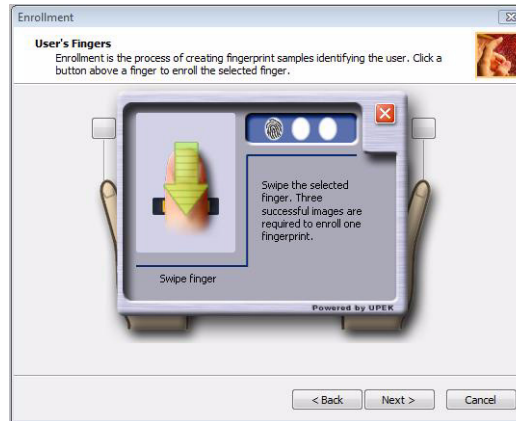
Modules & Options




Fingerprint Enrollment

Note that it is strongly recommended that you **enroll more than one finger in case of injury etc.**

- Click the button above any of the fingers to begin the enrollment process for that finger.
- Swipe the finger three times to enroll that finger.
- Repeat the process for all the fingers you wish to enroll (see sidebar), and then click **Next**.
- Click **Finish**.
- Click any of the headings under “**Learn more about:**” to get more information on any topic.
- Click **Close**.



- Restart the computer.
- Right-click the taskbar icon  to bring up the menu that allows you to **Edit Fingerprints, Start Control Center**, access the **Help** menu etc. You can also run

the **Control Center** etc. from the **Protector Suite QL** item in the **Programs/All Programs** menu.



Figure 7 - 27
Control Center & Biomenu

17. See **“Help & Manual” on page 7 - 28** for further details.
18. If you swipe your finger over the reader at any time you can access the **Biomenu** to **lock the computer**, **register websites**, open the **Control Center** and access the **Help** menu.
19. The **Control Center** allows you to change the **Settings**, **enroll Fingerprints** and get **Help**.

Chapter 8: Troubleshooting

Overview

Should you have any problems with your computer, before consulting your service representative, you may want to try to solve the problem yourself. This chapter lists some common problems and their possible solutions. This can't anticipate every problem, but you should check here before you panic. If you don't find the answer in these pages, make sure you have followed the instructions carefully and observed the safety precautions in the preface. If all else fails, talk to your service representative. You should also make a record of what happened and what remedies you tried.

Of course, if something goes wrong, it will happen at the most inconvenient time possible, so you should preview this section just in case. If, after you've tried everything, and the system still won't cooperate, try turning it off for a few minutes and then rebooting. You will lose any unsaved data, but it may start working again. Then call your service representative.

Basic Hints and Tips

Many of the following may seem obvious but they are often the solution to a problem when your computer appears not to be working.

- **Power** - Is the computer actually plugged into a working electrical outlet? If plugged into a **power strip**, make sure it is actually working. Check the **LED Power & Communication Indicators** (see “*LED Indicators*” on page 1 - 7) to see the computer’s power status.
- **Connections** - Check all the **cables** to make sure that there are no **loose connections** anywhere.
- **Power Savings** - Make sure that the system is not in **Hibernate** or **Sleep** mode by pressing the keys configured in your *Power Options* (see “*Power-Saving States*” on page 3 - 6), the **Fn + F4** key combination, or power button to wake-up the system.
- **Brightness** - Check the brightness of the screen by pressing the **Fn + F8 and F9** keys to adjust the brightness.
- **Display Choice** - Press **Fn + F7** to make sure the system is not set to “external only” display.
- **Boot Drive** - Make sure there are no **optical media and/or USB storage devices** in any connected drive (this is a common cause of the message “*Invalid system disk - Replace the disk, and then press any key*” / “*Remove disks or other media. Press any key to restart*”).

Backup and General Maintenance

- Always **backup** your important data, and keep copies of your OS and programs safe, but close to hand. Don't forget to note the **serial numbers** if you are storing them out of their original cases, e.g. in a CD wallet.
- Run **maintenance programs** on your hard disk and OS as often as you can. You may schedule these programs to run at times when you are not using your computer. You can use those that are provided free with your OS, or buy the more powerful dedicated programs to do so.
- Write down your passwords and keep them safe (away from your computer). This is especially important if you choose to use a **Supervisor** password for the BIOS (see *“The Power-On Self Test (POST)” on page 5 - 2*).
- Keep copies of vital **settings files** such as network, dialup settings, mail settings etc.(even if just brief notes).



Warranty

The CPU is not a user serviceable part. Opening this compartment, or accessing the CPU in any way, may violate your warranty.

Viruses

- Install an **Anti-Virus** program and keep the **definitions file** (the file which tells your program which viruses to look for) up to date. New computer viruses are discovered daily, and some of them may seriously harm your computer and cause you to lose data. **Anti-Virus** programs are commercially available and the **definitions file updates** are usually downloadable directly from the internet.
- Be careful when opening e-mail from sources you don't know. **Viruses** are often triggered from within **e-mail attachments** so take care when opening any attached file. You can configure most **Anti-Virus** programs to check all **e-mail attachments**. **Note:** You should also beware of files from people you know as the virus may have infected an **address book** and been automatically forwarded without the person's knowledge.
- Keep a "**Bootable CD-ROM/DVD-ROM/USB storage device**" (this CD/DVD/USB device provides basic information which allows you to startup your computer) handy. You may refer to your OS's documentation for instructions on how to make one, and many **Anti-Virus** programs will also provide such a disk (or at least instructions on how to make one).


Upgrading and Adding New Hardware/Software

- Do not be tempted to make changes to your **Windows Registry** unless you are very sure of what you are doing, otherwise you will risk severely damaging your system.
- Don't open your computer or undertake any repair or upgrade work if you are not comfortable with what you are doing.
- Read the **documentation**. We can assume, since you are reading this that you are looking at the computer's manual, but what about any new peripheral devices you have just purchased? Many problems are caused by the installation of new hardware and/or software. Always refer to the documentation of any new hardware and/or software, and pay particular attention to files entitled "**READ ME**" or "**READ ME FIRST**".
- When installing a new device always make sure the device is powered on, and in many cases you will need to restart the computer. Always check that all the cables are correctly connected.
- Make sure you have installed the **drivers** for any new hardware you have installed (latest **driver files** are usually available to download from vendor's websites).

Troubleshooting


- Thoroughly check any **recent changes** you made to your system as these changes may affect one or more system components, or software programs. If possible, go back and undo the change you just made and see if the problem still occurs.
- Don't over complicate things. The less you have to deal with then the easier the source of the problem may be found; **Example** - if your computer has many devices plugged into its ports, and a number of programs running, then it will be difficult to determine the cause of a problem. Try disconnecting all of the devices and restarting the computer with all the peripheral devices unplugged. A process of elimination (adding and removing devices and restarting where necessary) will often find the source of a problem, although this may be time consuming.

Problems and Possible Solutions





Problem	Possible Cause - Solution
<p>You turned on the power but it doesn't work.</p>	<p><i>Battery missing / incorrectly installed.</i> Check the battery bay, make sure the battery is present and seated properly (the design of the battery only allows it to go in one way). Make sure there's nothing interfering with the battery contacts.</p>
<p>The battery LED power indicator , is blinking orange.</p>	<p><i>Low Battery.</i> Plug in the DC power source. If the computer doesn't start up immediately, turn it off then on again.</p>
<p>You are losing battery power too quickly.</p>	<p><i>The system is using too much power.</i> If your OS has a <i>Power Options</i> scheme (see <i>"Power Plans" on page 3 - 4/"Power Schemes" on page D - 16</i>) check its settings. You may also be using an ExpressCard/USB device/external device that is drawing a lot of power.</p>
<p>Actual battery operating time is shorter than expected.</p>	<p><i>The battery has not been fully discharged before being recharged.</i> Make sure the battery is fully discharged and recharge it completely before reusing (see <i>"Battery Information" on page 3 - 10/"Battery Information" on page D - 21</i>).</p> <p><i>Power Options have been disabled.</i> Go to the Control Panel in <i>Windows</i> and re-enable the options.</p> <p><i>A peripheral device/USB device/ExpressCard is consuming a lot of power.</i> Turn off/remove the unused device to save power.</p>

Troubleshooting

Problem	Possible Cause - Solution
<p>The computer feels too hot.</p>	<p>Make sure the computer is properly ventilated and the Vent/Fan intakes are not blocked. If this doesn't cool it down, put the system into Hibernate mode or turn it off for an hour. Make sure the computer isn't sitting on a thermal surface (see <i>"Overheating" on page 1 - 14</i>). Make sure you're using the correct adapter.</p> <p>Make sure that your notebook is completely powered off before putting it into a travel bag (or any such container). Putting a notebook which is powered on in a travel bag may cause the Vent/Fan intakes to be blocked.</p>
<p>Nothing appears on screen.</p>	<p><i>The system is in a power saving mode.</i> Toggle the sleep/resume key combination, Fn + F4 (see <i>"Configuring the Power Buttons" on page 3 - 8</i>/<i>"Configuring the Power Button" on page D - 20</i>).</p> <p><i>The screen controls need to be adjusted.</i> Toggle the screen control key combinations Fn + F8/F9. If you're connected to an external monitor, make sure it's plugged in and turned on. You should also check the monitor's own brightness and contrast controls.</p> <p><i>The computer is set for a different display.</i> Toggle the screen display key combination, Fn + F7. If an external monitor is connected, turn it on.</p> <p><i>The screen saver is activated.</i> Press any key or touch the TouchPad.</p>
<p>No image appears on the external monitor I have plugged in and powered on.</p>	<p><i>You haven't installed the video driver and configured it appropriately from the Control Panel.</i> See <i>Appendix B/"Video Features" on page D - 7</i> for instructions on installing and configuring the video driver.</p>

Problem	Possible Cause - Solution
You forget the boot password .	<i>If you forget the password, you may have to discharge the battery of the CMOS. Contact your service representative for help.</i>
 <p>Password Warning</p> <p>If you choose to set a boot password, NEVER forget your password. The consequences of this could be serious. If you cannot remember your boot password you must contact your vendor and you may lose all of the information on your hard disk.</p>	
The sound cannot be heard or the volume is very low .	<i>The volume might be set too low. Check the volume control in the Volume Control Panel in the Windows taskbar, or use the key combination Fn + F5 and F6 (see “Function/Hot Key Indicators” on page 2 - 9/“Function Keys” on page D - 5) to adjust.</i>
The CD/DVD cannot be read .	<i>The CD/DVD is dirty. Clean it with a CD/DVD cleaner kit.</i>
The CD/DVD tray will not open when there is a disc in the tray.	<i>The CD/DVD is not correctly placed in the tray. Gently try to remove the disc using the eject hole (see “Loading Discs” on page 2 - 3).</i>
The DVD regional codes can no longer be changed.	<i>The code has been changed the maximum 5 times. See “DVD Regional Codes” on page 2 - 5/“DVD Regional Codes” on page D - 2.</i>

Troubleshooting

Problem	Possible Cause - Solution
Unwelcome numbers appear when typing.	If the LED  is lit, then Num Lock is turned ON . (see “LED Indicators” on page 1 - 7).
 <h3>Other Keyboards</h3> <p>If your keyboard is damaged or you just want to make a change, you can use any standard USB keyboard. The system will detect and enable it automatically. However special functions/hot keys unique to the system's regular keyboard may not work.</p>	
The system freezes or the screen goes dark.	<i>The system's power saving features have timed-out.</i> Use the AC/DC adapter, press the sleep (Fn + F4) key combination, or press the power button if no LEDs are lit.
The system never goes into a power saving mode .	Power Options features are not enabled. Go to the Windows Power Options menu and enable the features you prefer (see “Power-Saving States” on page 3 - 6 / “System Power Options” on page D - 18). Make sure you have enabled Hibernate mode from the control panel.
The Wireless LAN/Bluetooth/3.5G modules cannot be detected.	<i>The modules are off.</i> Check the LED indicator  and/or function key indicator to see if the WLAN/Bluetooth/3.5G module is on or off (see “LED Indicators” on page 1 - 7). If the LED indicator is off, then press the Fn + F11 (WLAN) , Fn + F12 (Bluetooth) or Fn +  (3.5G) key combination(s) in order to enable the modules (see “Function Keys” on page 1 - 10).







Problem	Possible Cause - Solution
<p>The PC Camera module cannot be detected.</p>	<p><i>The module is off. Press the Fn + F10 key combination in order to enable the module (see “Function Keys” on page 1 - 10). Run the BisonCap program (see “BisonCap (for 1.3M or 300K pixel camera modules)” on page 7 - 6/“BisonCap (for 300K & 1.2M pixel camera modules)” on page D - 32) to view the camera picture.</i></p>
<p>The Wireless LAN/ Bluetooth/ PC Camera/ 3.5G modules cannot be configured.</p>	<p>The driver(s) for the module(s) have not been installed. Make sure you have installed the driver for the appropriate module (see the instructions for the appropriate module in “Modules & Options” on page 7 - 1/“Module Drivers” on page D - 29).</p>




Appendix A: Interface (Ports & Jacks)

Overview

The following chapter will give a quick description of the interface (ports & jacks) which allow your computer to communicate with external devices, connect to the internet etc.

Notebook Ports and Jacks

Item	Description
Card Reader Port  MMC / SD / MS	The card reader allows you to use some of the latest digital storage cards. Push the card into the slot and it will appear as a removable device.
DC-In Jack 	Plug the supplied AC/DC adapter into this jack to power your computer.
External Monitor (VGA) Port 	This port allows you to connect an external monitor, or Flat Panel Display, to get dual video or simultaneous display on the LCD and external monitor/FPD.
Headphone-Out Jack 	Headphones or speakers may be connected through this jack. Note: Set your system's volume to a reduced level before connecting to this jack.
Microphone-In Jack 	Plug an external microphone in to this jack to record on your computer.
RJ-11 Modem Jack 	This port connects to the built-in modem. You may plug the telephone line directly into this RJ-11 telephone connection. Note: Broadband (e.g. ADSL) modems usually connect to the LAN port.

Item	Description
RJ-45 LAN Jack 	This port supports LAN (Network) functions. Note: Broadband (e.g. ADSL) modems usually connect to the LAN port.
Security Lock Slot 	To prevent possible theft, a Kensington-type lock can be attached to this slot. Locks can be purchased at any computer store.
S/PDIF-Out Jack SPDIF	This S/PDIF (Sony/Philips Digital Interface Format) Out Jack allows you to connect your DVD-capable PC to a Dolby AC-3 compatible receiver for "5.1" or 'dts' surround sound.
USB 2.0/1.1 Ports 	These USB 2.0 compatible ports (USB 2.0 is fully USB 1.1 compliant) are for low-speed peripherals such as keyboards, mice or scanners, and for high-speed peripherals such as external HDDs, digital video cameras or high-speed scanners etc. Devices can be plugged into the computer, and unplugged from the computer, without the need to turn the system off (if the power rating of your USB device is 500mA or above, make sure you use the power supply which comes with the device).

Interface (Ports & Jacks)

A

Appendix B: SIS Video Driver Controls

The basic settings for configuring the LCD are outlined in “*Video Features*” on *page 1 - 16*.

SIS Video Driver Installation

Make sure you install the drivers in the order indicated in *Table 4 - 1, on page 4 - 6*. Insert the *Device Drivers & Utilities + User’s Manual CD-ROM* and click **Install Drivers** (button).

Video

1. Click **1.Install VGA Driver > Yes**.
2. Click **Yes** (click **Yes** if you want to view the ReadMe file).
3. Click **Yes** to restart the computer.

Video Memory

The system does not feature dedicated video memory, but automatically and dynamically allocates as much (up to **256MB** maximum) system memory (RAM) as needed to the video system. The system returns whatever memory is no longer needed to the operating system.



Function Key Combination

You can use the **Fn + F7** key combination to toggle through the display options:

- Notebook Only
- External Display Only
- Notebook + External Display

Make sure you give the displays enough time to refresh.



Taskbar Icon


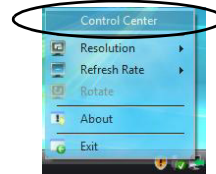
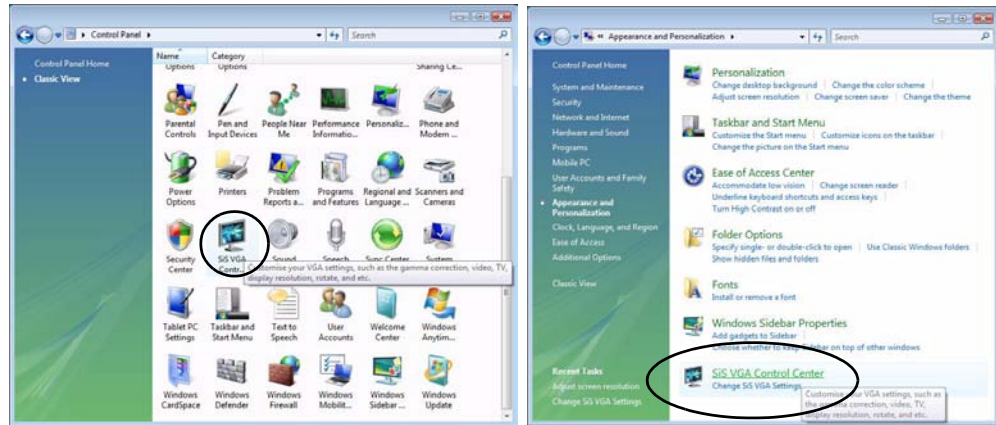
The **SIS VGA Control Center** can also be accessed by clicking the icon  in the taskbar and selecting **Control Center** from the menu.

Figure B - 1
SIS VGA Control Center

SIS VGA Control Center

More advanced video configuration options are provided by the **SIS VGA Control Center**.

1. Open the control panel (see *“Windows Vista Start Menu & Control Panel”* on *page 1 - 15*) and click **SIS VGA Control Center** (button).



You may make changes to the video and display settings by clicking the appropriate menu button.

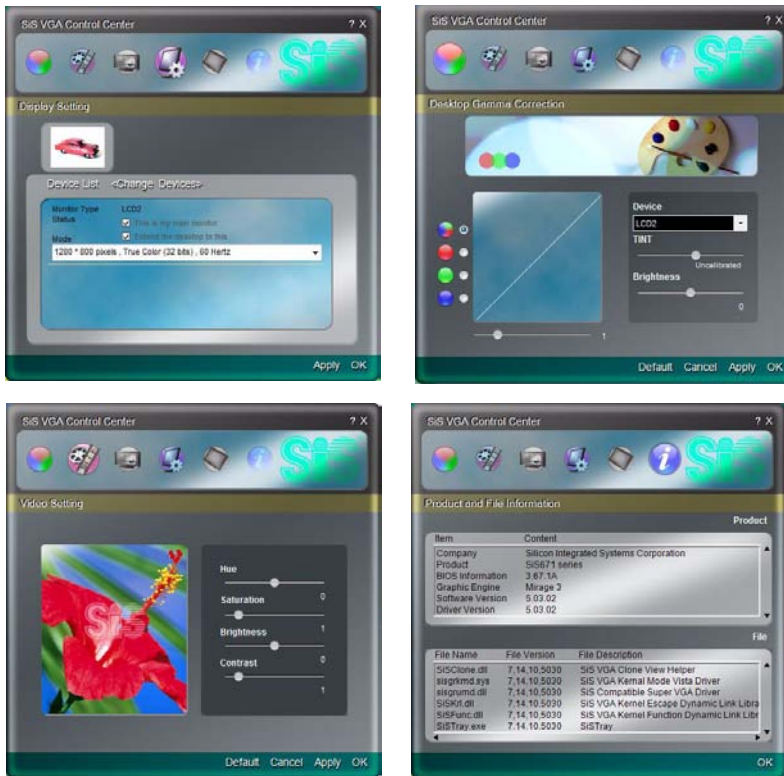





Figure B - 2
SIS VGA Control Center Control Panels



Display Devices & Options

Besides the built-in LCD, you can also use an **external VGA monitor** (CRT) or **external Flat Panel Display** as your display device. A VGA monitor/Flat Panel Display connects to the external monitor port. The following display modes are available.

Table B - 1
Display Modes

Display Setting Mode	Description
Single 	One of the connected displays is used as the display device
Clone 	Both connected displays output the same view and may be configured independently
Multi-Mode 	Both connected displays are treated as separate devices, may be configured independently and act as a virtual desktop (this is similar to Extended Desktop in Windows)

Attaching Other Displays

Besides the built-in LCD, you can also use an external monitor (CRT)/flat panel display as your display device. Connect it to the external monitor port on the left of the computer, and follow the instructions below:

Windows Vista

1. Attach your external display to the external monitor port and turn it on.
2. If a **New Display Detected** window does not appear in **Windows Vista**, go to the **Windows Mobility Center** control panel (**Mobile PC > Adjust commonly used mobility settings**) and click **Connect display**.
3. Click on any of the buttons to configure the displays to your preferences, or click **Display Settings** (in the New Display Detected window) to access the control panel.

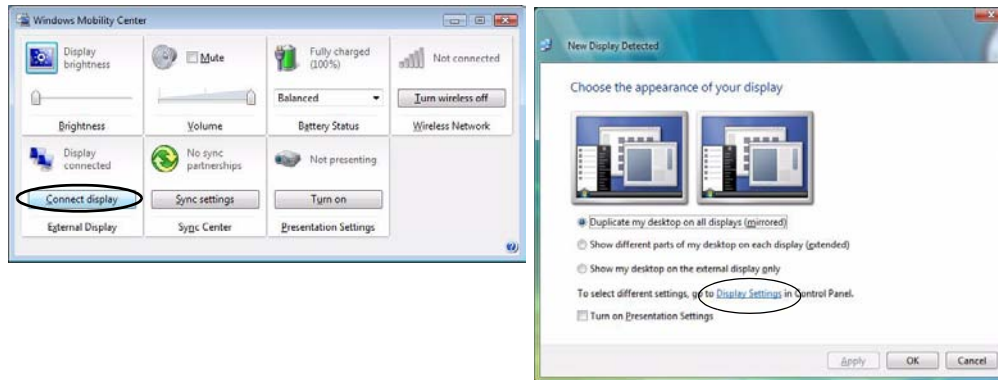


Figure B - 3
New Display
Detected

B

External displays may also be configured from **SiS VGA Control Center**:


1. Attach your external display to the external monitor port and turn it on.
2. Click **Start**, and click **Control Panel** (or point to **Settings** and click **Control Panel**).
3. Click **SiS VGA Control Center** (or click **Appearance and Personalization** > **SiS VGA Control Center**).
4. Click **Display Setting** icon .
5. Click **Device List <Change Devices>**.
6. Select which active device is to be **Device 1/Device 2** and click **OK**.

Figure B - 4
Select Active Devices



7. You can then choose the **Display Setting** mode from the menu buttons.

Figure B - 5
Display Setting



To Enable a Display Setting Mode

1. Attach your external display to the external monitor port and turn it on.
2. Go to the SIS VGA Control Center.
3. Click the appropriate icon for the display setting mode you wish to use.
4. Click **Yes** with 15 seconds in order to save the setting change.

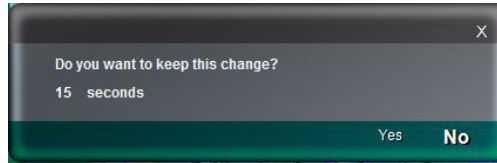


Figure B - 6
Confirm Changes

5. You can adjust the **display mode**, **change the status** and **clone** Device 1 from the device list menu.
6. Click **Apply > Yes** to save any changes.



Figure B - 7
Display Setting
Device List Options





Display Settings Extended Desktop

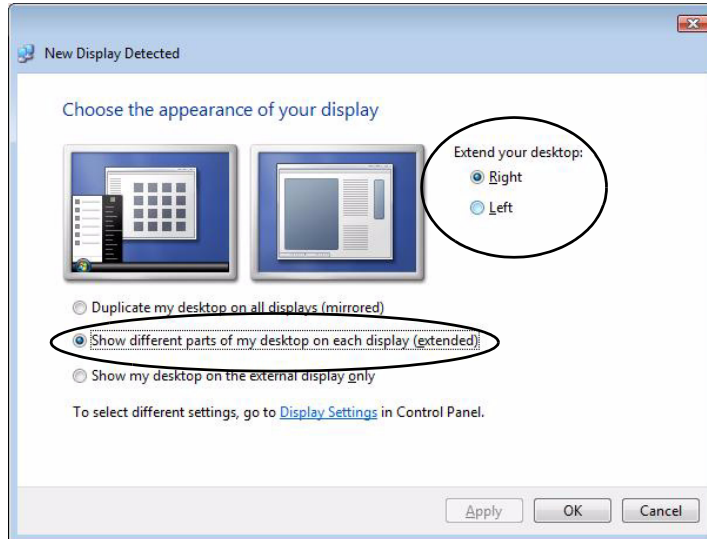
Use the control panel to drag the monitors to match the physical arrangement you wish to use.

You can drag any icons or windows across to either display desktop, which makes it possible to have one program visible in one of the displays, and a different program visible in the other display.

Figure B - 8
**New Display
Detected**

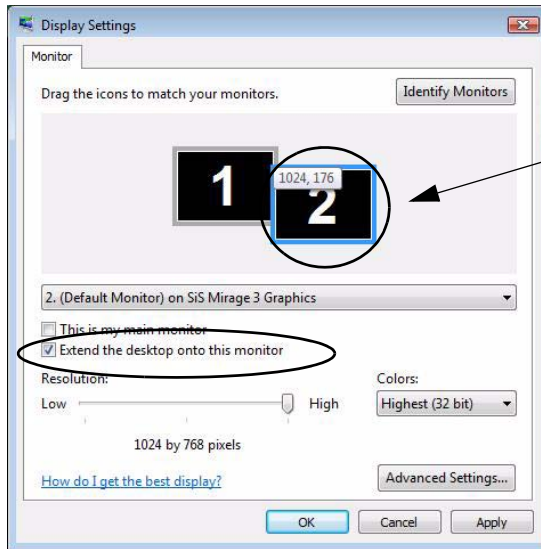
Using Windows Vista to Enable Extended Mode

1. Attach your external display to the external monitor port, and turn it on.
2. If a **New Display Detected** window does not appear in *Windows Vista*, go to the **Windows Mobility Center** control panel (**Mobile PC > Adjust commonly used mobility settings**) and click **Connect display**.
3. Click to select **Show different parts of my desktop on each display (extended)**.
4. Click **Right** or **Left** under **Extend your desktop**.
5. Click **Apply > OK**.



Using Display Settings to Enable Extended Mode

1. Attach your external display to the external monitor port, and turn it on.
2. Open the **Display Settings** control panel (see *“Video Features” on page 1 - 16*).
3. Click the monitor icon (e.g. **2**), and make sure you have checked **“Extend my Windows desktop onto this monitor.”** and click **Apply**.



Click the appropriate monitor icon (e.g. **2**) to be able to select the option to extend the desktop on to it.

In this example the Primary Display **1** is on the left, the Secondary Display **2** is on the right.

Figure B - 9
Display Properties
(Extended Desktop)



B

Appendix C: Specifications



Latest Specification Information

The specifications listed in this Appendix are correct at the time of going to press. Certain items (particularly processor types/speeds and CD/DVD device types) may be changed, delayed or updated due to the manufacturer's release schedule. Check with your service center for details.

Feature	Specification	
Processor	Intel® Core™2 Duo Processor (478-pin) Micro-FC-PGA Package T7200/ T7400/ T7600	65nm (65 Nanometer) Process Technology 4MB On-die L2 Cache & 667MHz FSB 2.0/ 2.16/ 2.33 GHz
	Intel® Core™2 Duo Processor (478-pin) Micro-FC-PGA Package T5500/ T5600	65nm (65 Nanometer) Process Technology 2MB On-die L2 Cache & 667MHz FSB 1.66/ 1.83 GHz
	Intel® Core™ Duo Processor (478-pin) Micro-FC-PGA Package T2300/ T2400/ T2500/ T2600/ T2700	65nm (65 Nanometer) Process Technology 2MB On-die L2 Cache & 667MHz FSB 1.66/ 1.83/ 2.0/ 2.16/ 2.33 GHz
	Intel® Celeron® M Processor (478-pin) Micro-FCPGA Package 410/ 420/ 430/ 440/ 450	65nm (65 Nanometer) Process Technology 1MB On-die L2 Cache & 533MHz FSB 1.46/ 1.60/ 1.73/ 1.86/ 2.0 GHz

Specifications

Feature	Specification	
Core Logic	SiS M671 + SiS968 Chipset	
LCD	12.1" WXGA (1280 * 800) Glare / Non Glare TFT LCD	
Memory	Two 200 Pin SO-DIMM Sockets Supporting DDRII (DDR2) 533/667 MHz 64-bit Wide DDRII (DDR2) Data Per Channel Memory Expandable up to 4GB (256/ 512/ 1024/ 2048 MB DDRII Modules)	
Video Adapter	SiS M671 Integrated Video High Performance 2D/3D Graphics Accelerator Shared Memory Architecture up to 256MB Supports Microsoft DirectX 9.0 Supports Vertex Shader 2.0 and Pixel Shader 2.0	
Security	Security (Kensington® Type) Lock Slot Fingerprint ID Reader Module (Factory Option)	BIOS Password
BIOS	One 8Mb SPI Flash ROM	Phoenix™ BIOS
Storage	One Changeable 12.7mm(h) Optical Device (CD/DVD) Type Drive (see <i>"Optional" on page C - 5</i>) Easy Changeable 2.5" 9.5 mm (h) SATA (Serial) HDD	
Audio	High Definition Audio (HDA) Compliant with Microsoft UAA (Universal Audio Architecture) Direct Sound 3D™ Compatible EAX™ 1.0 & 2.0 Compatible	A3D™ Compatible S/PDIF Digital Output 2 * Built-In Speakers Built-In Microphone

C - 2 Specifications

Feature	Specification
Keyboard & Pointing Device	Winkey Keyboard Built-In TouchPad with Scrolling Function
Interface	<div style="display: flex; justify-content: space-between;"> <div style="width: 45%;"> Three USB 2.0 Ports One Headphone-Out Jack One Microphone-In Jack One S/PDIF Out Jack One Internal Microphone </div> <div style="width: 45%;"> One RJ-11 Modem Jack One RJ-45 LAN Jack One DC-in Jack One External Monitor Port </div> </div>
Card Reader	Embedded 7-in-1 Card Reader (MS/ MS Pro/ SD/ Mini SD/ MMC/ RS MMC/ MS Duo) Note: MS Duo/ Mini SD/ RS MMC Cards require a PC adapter
ExpressCard Slot	One ExpressCard/34(54) Slot
Communication * Note: The Bluetooth and 3.5G Optional Modules cannot coexist. If one of these factory options is included in your purchase option, then the other is unavailable .	10M/100Mb Base-T Ethernet LAN 56K MDC Modem V.90 & V.92 Compliant 802.11 b/g USB Wireless LAN Module (Option) 300K, 1.3M or 2.0M Pixel USB PC Camera Module (Factory Option) <u>Bluetooth OR 3.5G Module Options:</u> *Bluetooth 2.0 + EDR (Enhanced Data Rate) Module (Factory Option) OR *UMTS/HSPDA-based 3.5G Module with Mini Card Interface (Factory Option) Quad-band GSM/GPRS (850 MHz, 900 MHz, 1800 MHz, 1900 MHz) UMTS WCDMA FDD (2100 MHz) UMTS WCDMA FDD (850 MHz, 1900 MHz)



Specifications

Feature	Specification												
Power Management	Supports ACPI 3.0 Supports Wake on LAN Supports Wake on USB Supports Resume from Modem Ring												
Power	Full Range AC/DC Adapter AC input 100 - 240V, 50 - 60Hz, DC Output 19V, 3.42A (65 Watts)												
Battery	4 Cell Smart Lithium-Ion Battery Pack, 14.8V/2.4AH 8 Cell Smart Lithium-Ion Battery Pack, 14.8V/4.4AH (Option)												
Environmental Spec	<table border="0"> <tr> <td>Temperature</td> <td></td> <td>Relative Humidity</td> <td></td> </tr> <tr> <td> Operating:</td> <td>5°C ~ 35°C</td> <td> Operating:</td> <td>20% ~ 80%</td> </tr> <tr> <td> Non-Operating:</td> <td>-20°C ~ 60°C</td> <td> Non-Operating:</td> <td>10% ~ 90%</td> </tr> </table>	Temperature		Relative Humidity		Operating:	5°C ~ 35°C	Operating:	20% ~ 80%	Non-Operating:	-20°C ~ 60°C	Non-Operating:	10% ~ 90%
Temperature		Relative Humidity											
Operating:	5°C ~ 35°C	Operating:	20% ~ 80%										
Non-Operating:	-20°C ~ 60°C	Non-Operating:	10% ~ 90%										
Dimensions & Weight	299mm (w) * 219mm (d) * 26.5-35.7mm (h) 1.8 kg With 4 Cell Battery and ODD												

Feature	Specification
<p>Optional</p> <p>*Note: The Bluetooth and 3.5G Optional Modules cannot coexist. If one of these factory options is included in your purchase option, then the other is unavailable.</p>	<p><u>Optical Drive Module Options:</u></p> <p>DVD/CD-RW Combo Drive Module Super Multi Drive Module</p> <p>USB Floppy Disk Drive</p> <p>802.11 b/g USB Wireless LAN Module</p> <p>8 Cell Smart Lithium-Ion Battery Pack</p> <p>300K, 1.3M or 2.0M Pixel USB PC Camera Module (Factory Option)</p> <p>Fingerprint ID Reader Module (Factory Option)</p> <p>*Bluetooth 2.0 + EDR (Enhanced Data Rate) Module (Factory Option)</p> <p>OR</p> <p>*UMTS/HSPDA-based 3.5G Module with Mini Card Interface (Factory Option)</p> <p style="padding-left: 20px;">Quad-band GSM/GPRS (850 MHz, 900 MHz, 1800 MHz, 1900 MHz) UMTS WCDMA FDD (2100 MHz) UMTS WCDMA FDD (850 MHz, 1900 MHz)</p>

Specifications

C

Appendix D: Windows XP Information

This Appendix contains information (including control panel information, driver installation etc.) for users of the *Windows XP OS*.

DVD Regional Codes



Changing DVD Regional Codes

Go to the **Control Panel** and double-click **System > Hardware** (tab), click **Device Manager**, then click the **+** next to **DVD/CD-ROM drives**. Double-click on the DVD-ROM device to bring up the **Properties** dialogue box, and select the **DVD Region** (tab) to bring up the control panel to allow you to adjust the regional code.

DVD region detection is device dependent, not OS-dependent. You can select your module's region code **5** times. The fifth selection is permanent. This cannot be altered even if you change your operating system or you use the module in another computer.

Region	Geographical Location
1	USA, Canada
2	Western Europe, Japan, South Africa, Middle East & Egypt
3	South-East Asia, Taiwan, South Korea, The Philippines, Indonesia, Hong Kong
4	South & Central America, Mexico, Australia, New Zealand
5	N Korea, Russia, Eastern Europe, India & Most of Africa
6	China

Table D - 1 - DVD Region Codes

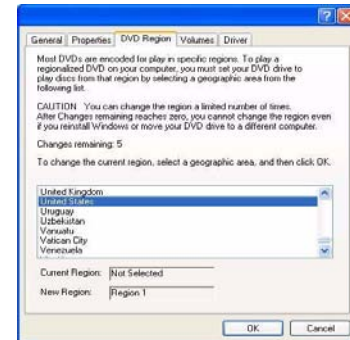


Figure D - 1 - DVD Regions

Windows XP Start Menu & Control Panel

Most of the control panels, utilities and programs within *Windows XP* (and most other *Windows* versions) are accessed from the **Start** menu. When you install programs and utilities they will be installed on your hard disk drive, and a shortcut will usually be placed in the **Start** menu and/or the desktop. You can customize the look of the **Start** menu by right-clicking the **Start** menu and selecting **Properties** from the menu.




Figure D - 2 - Start Menu & Control Panel

In many instances throughout this manual you will see an instruction to open the **Control Panel**. The **Control Panel** is accessed from the **Start** menu, and it allows you to configure the settings for most of the key features in *Windows* (e.g. power, video, network, audio etc.). *Windows XP* provides basic controls for many of the features, however many new controls are added (or existing ones are enhanced) when you install the drivers. To see all controls it may be necessary to toggle off Category View.

TouchPad and Buttons/Mouse

The TouchPad is an alternative to the mouse; however, you can also add a mouse to your computer through one of the USB ports. The TouchPad buttons function in much the same way as a two-button mouse.

Once you have installed the TouchPad driver (see *“TouchPad” on page D - 29*) you can configure the functions by double-clicking the TouchPad driver icon  on the **taskbar**. You may then configure the TouchPad tapping, buttons, scrolling, pointer motion and sensitivity options to your preferences. You will find further information at www.synaptics.com.



Mouse Driver

If you are using an external mouse your operating system may be able to auto-configure your mouse during its installation or only enable its basic functions. Be sure to check the device's user documentation for details.

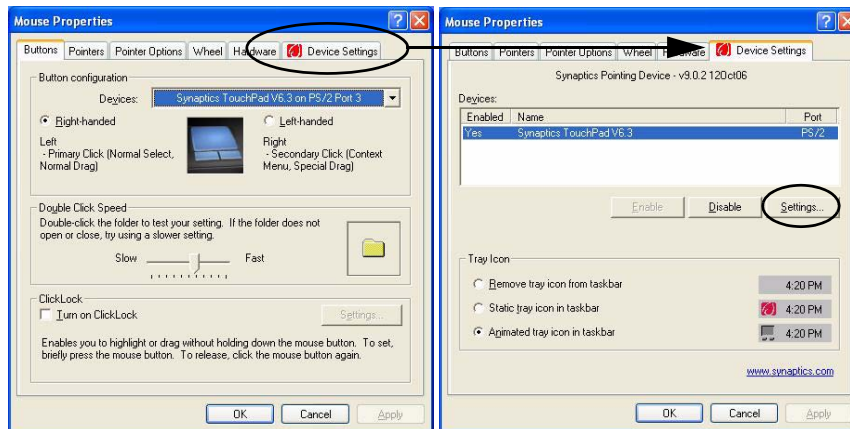



Figure D - 3 - Mouse Properties



Function Keys


The **function keys** (F1 - F12 etc.) will act as **hot keys** when pressed while the **Fn** key is held down. In addition to the basic function key combinations; visual indicators (see the table below) are available when the hot key utility is installed (see *“Hot Key” on page D - 29*). After installing the driver an icon  will appear in the taskbar.

Fn Keys	Function	Fn Keys	Function
Fn + F1	TouchPad Toggle 	Fn + F10	PC Camera Power Toggle 
Fn + F3	Mute Toggle 	Fn + F11	WLAN Module Power Toggle 
Fn + F5/F6	Volume Decrease/ Increase 	Fn + F12	Bluetooth Module Power Toggle 
Fn + F8/F9	Brightness Decrease/ Increase 		*Silent Mode Toggle 

Table D - 2 - Hot Key Functions & Indicators

Audio Features

You can configure the audio options on your computer from the **Sounds and Audio Devices**  *Windows* control panel, or from the **Realtek HD Audio Manager**  icon in the taskbar/control panel (this will bring up the Realtek Audio Configuration menus). The volume may also be adjusted by means of the **Fn + F5/F6** key combination.



Sound Volume Adjustment

How high the sound volume can be set depends on the setting of the volume control within *Windows* (and the volume control function keys on the computer). Click the Volume icon on the taskbar to check the setting.





Figure D - 4 - Realtek Audio Configuration Menus

Video Features

You can switch display devices, and configure display options, from the **Display Properties** control panel in *Windows* as long as the appropriate **video driver** is installed.

To access **Display Properties** in *Windows*:

1. Click **Start**, point to **Settings** and click **Control Panel** (or just click **Control Panel**).
2. Double-click **Display** (icon) - In the **Appearances and Themes** category.
3. Click **Settings** (tab) in the **Display Properties** dialog box.
4. Move the slider to the preferred setting in **Screen resolution** ① (*Figure D - 5 on page D - 8*).
5. Click the arrow, and scroll to the preferred setting in **Color quality** ② (*Figure D - 5 on page D - 8*).
6. You can also access **Display Properties** by right-clicking the desktop and scrolling down and clicking **Properties**. Click **Settings** (tab) and adjust as above.
7. Open the **Display Properties** control panel, and click **Advanced** (button) ③ (*Figure D - 5 on page D - 8*) to bring up the Advanced properties tabs.
8. Click **SIS Utility Manager** (tab) to access the **SIS** video controls.
9. You can also access **SIS** video controls by right-clicking the **SIS Utility Tray** taskbar icon , and selecting the appropriate control from the **Display Property(D)** menu.

Windows XP Information

Display Properties & SIS Utility Manager

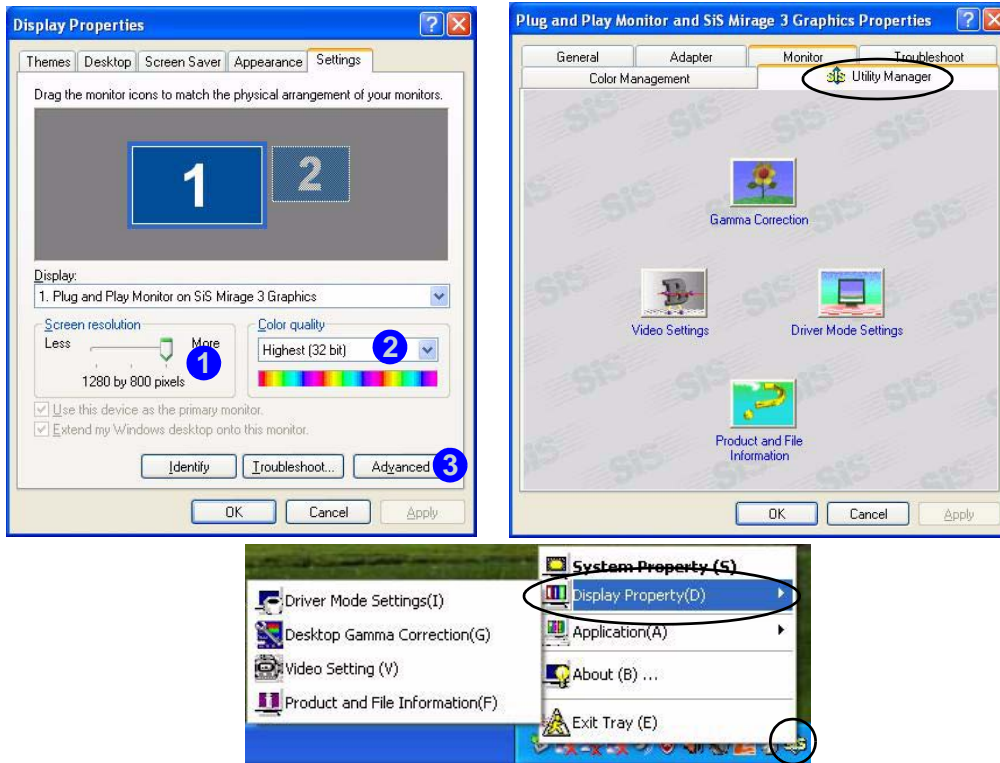
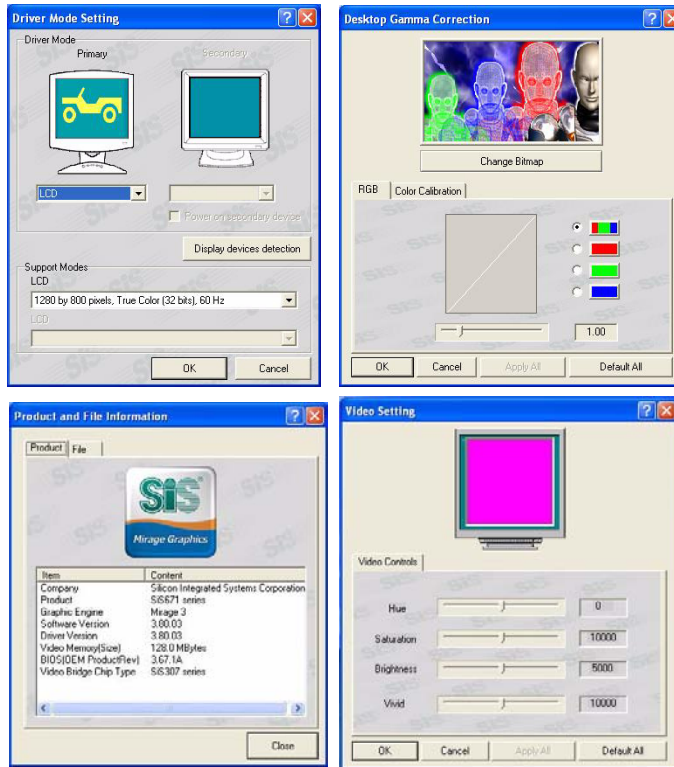


Figure D - 5 - Display & Graphics Properties

You may make changes to the video and display settings by clicking the appropriate menu button.



Function Key Combination

You can use the **Fn + F7** key combination to toggle through the display options:

- Notebook Only
- External Display Only
- Notebook + External Display

Make sure you give the displays enough time to refresh.

Figure D - 6
SIS Utility Manager Control Panels

Display Devices & Options

Besides the built-in LCD, you can also use an **external VGA monitor** (CRT) or **external Flat Panel Display** as your display device. A VGA monitor/Flat Panel Display connects to the external monitor port. The following display modes are available.



Driver Mode Setting	Description
Single	One of the connected displays is used as the display device
Clone 	Both connected displays output the same view
Multi-Mode 	Both connected displays are treated as separate devices, may be configured independently and act as a virtual desktop (this is similar to Extended Desktop in <i>Windows</i>)

Table D - 3 - Display Options

Attaching Other Displays

If you prefer to use a monitor or flat panel display as your display device, then connect it to the external monitor port on the left of the computer.



1. Attach your external display to the external monitor port, and turn it on.
2. Go to the **SIS Utility Manager** control panel and click **Driver Mode Settings**.
3. Click to choose the **Primary** or **Secondary** display option from the menu.
4. Click the button to toggle either **Clone**  or **Multi-Mode** .
5. Click **OK** to confirm the settings change.



Figure D - 8 - Driver Mode



Secondary Device

Click to put a tick in the **Power on secondary device** box if the secondary display doesn't appear.

Figure D - 7
SIS Utility Manager
Control Panels

Windows XP Information

To Enable Extended Desktop (Windows Display Properties)

1. Attach your external monitor to the external monitor port, and turn it on.
2. Click **Start**, point to **Settings** (or click **Control Panel**) and click **Control Panel** (if you are in **Category View** choose **Appearance and Themes**).
3. Double-click **Display** (icon).
4. In the **Display Properties** dialog box, click **Settings** (tab).
5. Click the monitor icon (e.g. **2**), and make sure you have checked “**Extend my Windows desktop onto this monitor.**” and click **Apply**.



Click the appropriate monitor icon (e.g. **2**) to be able to select the option to extend the desktop on to it.

In this example the Primary monitor **1** is on the left, the secondary display **2** is on the right.

Display Settings Extended Desktop

Use the control panel to drag the monitors to match the physical arrangement you wish to use.

You can drag any icons or windows across to either display desktop, which makes it possible to have one program visible in one of the displays, and a different program visible in the other display.

Figure D - 9 - Display Properties (Extended Desktop)

Power Management Features

To conserve power, especially when using the battery, your computer uses the ACPI power management system. Power management conserves power by controlling individual components of the computer (the monitor and hard disk drive) or the whole system.

The **Power Options** control panel icon in *Windows* (see page *D - 3*) allows you to configure power management features for your computer. You may conserve power through individual components such as the monitor or hard disk, or you may use either **Stand by** or **Hibernate** mode to conserve power throughout the system.

Advanced Configuration and Power Interface

The **ACPI** interface provides the computer with enhanced power saving techniques and gives the operating system (OS) direct control over the power and thermal states of devices and processors. For example, it enables the OS to set devices into low-power states based on user settings and information from applications. ACPI is fully supported in *Windows XP*.



OS Note

Power management functions will vary slightly depending on your operating system. For more information it is best to refer to the user's manual of your operating system.

(**Note:** All pictures used on the following pages are from the *Windows XP OS*.)

The Power Sources

The computer can be powered by either an AC/DC adapter or a battery pack.

AC/DC Adapter

Use only the AC/DC adapter that comes with your computer. The wrong type of AC/DC adapter will damage the computer and its components.

1. Attach the AC/DC adapter to the DC-in jack at the rear of the computer.
2. Plug the AC power cord into an outlet, and then connect the AC power cord to the AC/DC adapter.
3. Raise the lid/LCD to a comfortable viewing angle.
4. Press the power button to turn “On”.

Battery

The battery allows you to use your computer while you are on the road or when an electrical outlet is unavailable. Battery life varies depending on the applications and the configuration you're using. **To increase battery life, let the battery discharge completely before recharging** (see *“How do I completely discharge the battery?” on page D - 24*).

We recommend that you do not remove the battery. For more information on the battery, please refer to *“Battery Information” on page D - 21*.

Turning on the Computer

Now you are ready to begin using your computer. To turn it on simply press the power button on the front panel.

When the computer is on, you can use the power button as a Stand by/Hibernate/Shutdown hot-key button when it is pressed for less than **4 seconds** (pressing and holding the power button for longer than this will shut the computer down). Use **Power Options** in the *Windows* control panel to configure this feature.



Forced Off

If the system “hangs”, and the **Ctrl + Alt + Del** key combination doesn’t work, press the power button for **4 seconds**, or longer, to force the system to turn itself off.

Power Button as Stand by or Hibernate Button

If you are using a fully ACPI-compliant OS, (such as Windows XP) you can use the OS’s “Power Options” control panel to set the power button to send the system into Stand by or Hibernate mode (see your OS’s documentation, or [“Configuring the Power Button”](#) on [page D - 20](#) for details).



Shutdown

Note that you should always shut your computer down by choosing the **Turn Off Computer** command from the **Start** menu in *Windows*. This will help prevent hard disk or system problems.



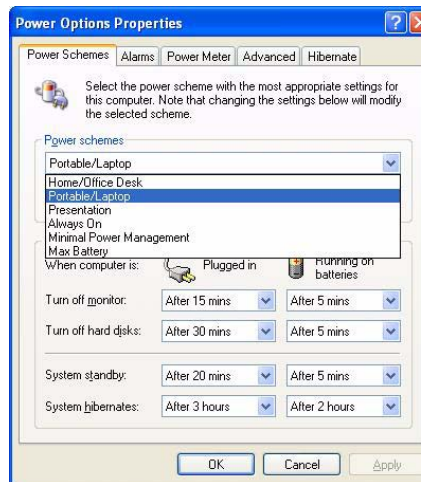
Resuming Operation

Press a key on the keyboard, or move the mouse/TouchPad to resume from Monitor or Hard Disk Stand by.

Power Schemes

You can set your computer to conserve power through individual components by means of **Power Schemes**. You can also adjust the settings for each scheme to set the monitor to turn off after a specified time, and the computer's hard disk motor to turn off if the hard disk drive has not been accessed for a specified period of time (if the system reads or writes data, the hard disk motor will be turned back on). The schemes may also be set to set a specified time for the system to enter **Stand by** or **Hibernate** modes (see *“System Power Options” on page D - 18*).

Figure D - 10
Power Schemes



Each **Windows Power Scheme** will also adjust the processor performance of your machine in order to save power. This is worth bearing in mind if you are experiencing any reduced performance (especially under DC/battery power).

Choose the **Home/Office Desk** scheme for maximum performance when the computer is powered from an AC power source. Choose the **Max Battery** scheme (bear in mind that this scheme may slow down the overall performance of the computer in order to save power) for maximum power saving when the computer is battery (DC power) powered. **Windows** will use **Portable/Laptop** as the default scheme.



Stand by/Hibernate or Shutdown Error

The computer may stop responding when you put it into (or resume from) Stand By or Hibernate, or when you shut down.

This error is caused by power management within **Windows XP**, when applied to a **PC Camera** attached to the internal USB hub.

Microsoft has posted a Hotfix for this error on its website (search for Hotfix KB909667).

Download and install the Hotfix to correct this error.

System Power Options

You can use the system power options to stop the computer's operation and restart where you left off. This system features **Stand by** and **Hibernate** sleep mode levels (**Hibernate** mode will need to be enabled by clicking the option in the **Hibernate** tab in the **Power Options** control panel - see "[Hibernate](#)" on page **D - 19**).

Hibernate Mode vs. Shutdown

Hibernate mode and Shutdown are the same in that the system is off and you need to press the power button to turn it on. Their main difference is:

When you come back from hibernation, you can return to where you last left off (what was on your desktop) without reopening the application(s) and file(s) you last used.

You can use either method depending on your needs.

Stand by Mode vs. Hibernate Mode

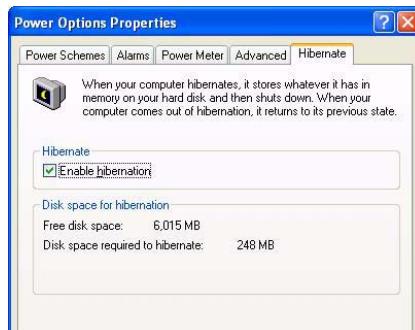
If you want to stay away from your work for just a while, you can put the system on Stand by instead of in hibernation. It takes a longer time to wake up the system from **Hibernate** mode than from **Stand by** mode.

Stand by

Stand by saves the least amount of power, but takes the shortest time to return to full operation. During Stand by the hard disk is turned off, and the CPU is made to idle at its slowest speed. All open applications are retained in memory. When you are not using your computer for a certain length of time, which you specify in the operating system, it will enter Stand by mode to save power.

Hibernate

Hibernate uses no power and saves all of your information on a part of the HDD before it turns the system off. Although it saves the most power it takes the longest time to return to full operation. You can set your computer to automatically enter Hibernate mode when the battery power is almost depleted. You will need to enable Hibernate mode from the **Hibernate** tab in the Power Options control panel. **The system will resume from Hibernate mode by pressing the power button.**



System Resume

The system can resume from Stand by mode by:

- Pressing the power button
- Pressing the **Sleep/Resume** key combination
- An incoming call received on the modem (if enabled)
- Network card (Wake On LAN) activity (if enabled)

Figure D - 11
Enable Hibernation

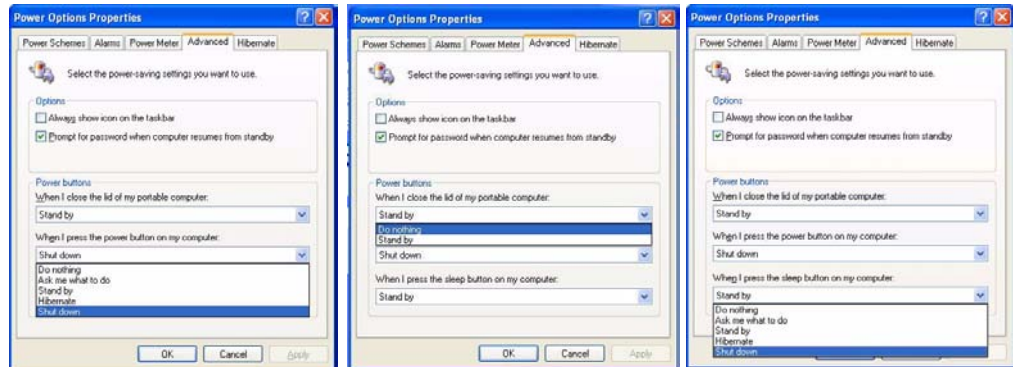


Sleep Button

You may also configure the **Sleep/Resume** key combination (**Fn + F4**) from the menu illustrated. In **Windows** this is referred to as the **Sleep** button.

Configuring the Power Button

The power button may be set to send the computer in to either **Stand by** or **Hibernate** mode. In **Stand by** mode, the LED D/U will blink green. In **Hibernate** mode the LED will be off (battery) or orange (AC/DC adapter). If you are in a power saving mode set to save power through individual components (e.g. hard disk, monitor), the LED will remain green.



Power Button

Lid

Sleep/Resume
(Sleep) Button

Figure D - 12
**Power Options
(Advanced - Power
Buttons)**

Battery Information

Please follow these simple guidelines to get the best use out of your battery.

New Battery

Always completely discharge, then fully charge, a new battery (see *“Battery FAQ”* on page D - 24 for instructions on how to do this).

Battery Life

Your computer’s battery life is dependent upon many factors, including the programs you are running, and peripheral devices attached. **Power Options** (you may set low battery **Alarms** and actions, and check the **Power Meter** from the **Power Options** control panel), and settings in the OS will help prolong the battery life if configured appropriately.



Low Battery Warning

When the battery is critically low, immediately connect the AC/DC adapter to the computer or save your work, otherwise, the unsaved data will be lost when the power is depleted.

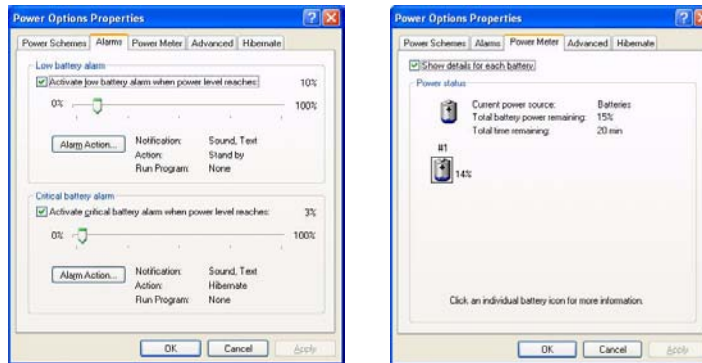


Figure D - 13
Power Options
(Alarm & Power
Meter)

Windows XP Information

Battery life may be shortened through improper maintenance. **To optimize the life and improve its performance, fully discharge and recharge the battery at least once every 30 days.**

We recommend that you do not remove the battery yourself. If you need to remove the battery for any reason, see *“Removing the Battery” on page 6 - 3.*

Recharging the Battery with the AC/DC Adapter

The battery pack automatically recharges when the AC/DC adapter is attached and plugged into an electrical outlet. If the computer is powered on, and in use, it will take several hours to fully recharge the battery. When the computer is turned off but plugged into an electrical outlet, battery charge time is less. (Refer to *“LED Indicators” on page 1 - 7* for information on the battery charge status, and to *“Battery Information” on page D - 21* for more information on how to maintain and properly recharge the battery pack.)



Conserving Battery Power

To conserve battery power:

Lower the brightness level of the LCD display. The system will decrease LCD brightness slightly to save power when it is not powered by the AC/DC adapter.

Close modem or communication applications when they are not being used.

Remove any unused PC Cards from the computer (PC Cards quickly use up battery power even if the system enters sleep mode).

Disconnect any unnecessary external devices.

Proper handling of the Battery Pack

- DO NOT disassemble the battery pack under any circumstances
- DO NOT expose the battery to fire or high temperatures, it may explode
- DO NOT connect the metal terminals (+, -) to each other



Damaged Battery Warning

Should you notice any physical defects (e.g. the battery is bent out of shape after being dropped), or any unusual smells emanating from the notebook battery, shut your computer down immediately and contact your service center. If the battery has been dropped we do not recommend using it any further, as even if the computer continues to work with a damaged battery in place, it may cause circuit damage, which may possibly result in fire. It is recommended that you replace your computer battery every two years.



Caution

Danger of explosion if battery is incorrectly replaced.

Replace only with the same or equivalent type recommended by the manufacturer. Discard used battery according to the manufacturer's instructions.

Battery FAQ

How do I completely discharge the battery?

Use the computer with battery power until it shuts down due to a low battery. Don't turn off the computer by yourself even when you see a message that indicates the battery is critically low, just let the computer use up all of the battery power and shut down on its own. Disable the **Power Options** functions in the **Control Panel**, especially any **Alarms** (**unclick** the tickboxes - see page [D - 21](#)) and **Schemes** (change all the settings to **Never** - see page [D - 16](#)). As the battery nears the end of its life save and close any critical files.

How do I fully charge the battery?

When charging the battery, don't stop until the LED charging indicator light changes from orange to green.

How do I maintain the battery?

Completely discharge and charge the battery at least once every 30 days or after about 20 partial discharges.

Driver Installation

Insert the *Device Drivers & Utilities + User's Manual CD-ROM*, click **Install Drivers/Optional** (button) and then click the appropriate driver name from the *Drivers Installer* menu. Follow the instructions to install the driver. Alternatively click **Start**, navigate (**Browse..**) to the executable file and then follow the manual setup instructions.



Figure 5 - Drivers Installer Screen 1

1. Check the driver installation order from [Table 5](#) (the **drivers must be installed in this order**) which is the same as that listed in the *Drivers Installer* menu below.
2. Click to select the driver you wish to install, after installing each driver it will become greyed out (if you need to reinstall any driver, click the **Unlock** button).
3. Follow the instructions for each individual driver installation procedure as listed on the following pages.



Figure 6 - Drivers Installer Screen 2

Windows XP Information

Installation Methods (Win XP)

If you wish to install the drivers manually, click the **Exit** button to quit the *Drivers Installer* application, and then browse to the executable file in the location listed in the table below and follow the installation procedure for each driver. **Note that X is the drive letter assigned to the CD/DVD-ROM drive.**

WinXP SP2 Driver	Page #	Driver Location
<i>Video</i>	<i>Page D - 28</i>	X:\XP\01Vga\setup.exe
<i>Audio</i>	<i>Page D - 28</i>	X:\Drivers\02Audio\Setup.exe
<i>Modem</i>	<i>Page D - 28</i>	X:\Drivers\03Modem\ssetup.exe
<i>LAN</i>	<i>Page D - 28</i>	X:\Drivers\04Lan\setup.exe
<i>TouchPad</i>	<i>Page D - 29</i>	X:\XP\05Touchpad\Setup.exe
<i>CardReader</i>	<i>Page D - 29</i>	X:\Drivers\06Reader\Setup.exe
<i>Hot Key</i>	<i>Page D - 29</i>	X:\XP\07Hotkey\Setup.EXE
<i>PC Camera Module</i>	<i>Page D - 30</i>	X:\XP\02Camera\Setup.exe (for 300K or 1.3M pixel Camera) X:\Others\02Camera\D-max2.0M\Setup.exe (for 2.0M pixel Camera)
<i>Wireless LAN Module</i>	<i>Page D - 37</i>	X:\Others\01RTL8187\setup.exe
<i>Bluetooth Module</i>	<i>Page D - 39</i>	X:\XP\03Bluetooth\Setup.exe
<i>3.5G Module</i>	<i>Page D - 43</i>	X:\Others\04_3G\3G.msi
<i>Fingerprint Reader</i>	<i>Page D - 44</i>	X:\Others\05Fingerprint\Application\x86\autorun.exe

Table 5 - Driver Installation

Updating/Reinstalling Individual Drivers

If you wish to update/reinstall individual drivers it may be necessary to uninstall the original driver. To do this go to the **Control Panel** in the *Windows OS* and double-click the **Add/Remove Programs** item. **If you see the individual driver listed** (if not see below), uninstall it, following the on screen prompts (it may be necessary to restart the computer). Go to the appropriate section of the manual to complete the update/reinstall procedure for the driver in question.

If the driver is not listed in the **Add/Remove Programs** item:

1. Click **Start** (menu), point to **Settings** and click **Control Panel** (or click **Start > Control Panel**).
2. Double-click **System** (icon); System (icon) is in **Performance and Maintenance** (category).
3. Click **Hardware** (tab) > **Device Manager** (button).
4. Double-click the **device** you wish to update/reinstall the driver for (you may need to click "+").
5. Look for the **Update Driver** button (check the **Driver** tab) and follow the on screen prompts.



Windows XP Service Pack 2

Make sure you install **Windows XP Service Pack 2** (or a Windows XP version which includes Service Pack 2) **before installing any drivers**. Service Pack 2 includes support for **USB 2.0**.

If you have **upgraded** the system by installing **Service Pack 2** (i.e. your Windows XP version does not include Service Pack 2) then follow these instructions:

1. Click **Start** (menu), point to **Settings** and click **Control Panel** (or click **Control Panel**).
2. Double-click **System** (icon); **System** (icon) is in **Performance and Maintenance** (category).
3. Click the **Hardware** (tab) > **Device Manager** (button).
4. Click "+" next to **Other Devices** (if its sub-items are not shown).
5. Right-click **Universal Serial Bus (USB) Controller** and select **Uninstall > OK** (if you don't see the item then there is no need to take any further action).
6. Restart the computer and it will find the USB 2.0 controller.

Driver Installation Procedure

Video

1. Click **1.Install VGA Driver > Yes**.
2. Click **Next > Next > Next > Next**.
3. Click **Next** (click **Yes** if you want to view the ReadMe file).
4. Click **Finish** to restart the computer.

Audio

1. Click **2.Install Audio Driver > Yes**.
2. Click **Next**.
3. Click **Finish** to restart the computer.

Modem

1. Click **3.Install Modem Driver > Yes**.
2. Click **OK**.
3. The modem is ready for dial-up configuration.



Modem Country Selection

Be sure to check if the modem country selection is appropriate for you (**Control Panel > Phone and Modem Options**).

LAN

1. Click **4.Install LAN Driver > Yes**.
2. Click **Next**.
3. Click **Finish > Finish** to restart the computer.
4. The network settings can now be configured.

TouchPad

1. Click **5.Install Touchpad Driver > Yes**.
2. Click **Next > Next > Next**.
3. Click **Finish** to restart the computer.
4. You may then configure your TouchPad as outlined in *“TouchPad and Buttons/Mouse” on page 2 - 8*.

CardReader

1. Click **6.Install Cardreader Driver > Yes**.
2. Click **Next > Next**.
3. Click **Finish** to restart the computer.

Hot Key

1. Click **7.Install HOTKEY Driver > Yes**.
2. Click **Next > Install**.
3. Click **Finish > Finish** to restart the computer.

Module Drivers

See the following pages for the driver installation procedures for any of the optional modules included in your purchase configuration.

Wireless LAN, Bluetooth & 3.5G Modules



Wireless Device Operation Aboard Aircraft

The use of any portable electronic transmission devices aboard aircraft is usually prohibited. Make sure the module(s) are **OFF** if you are using the computer aboard aircraft.

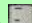




Wireless LAN, Bluetooth & 3.5G Modules Power Toggle

Enable power to the modules as follows:

Fn + F11 = Wireless LAN Module Power Toggle

Fn + F12 = Bluetooth Module Power Toggle

Fn +  = 3.5G Module Power Toggle

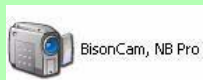
The LED indicator  will be **green** if the WLAN module is on, and **orange** if the Bluetooth module is on. The LED indicator  will be **green** if the 3.5G module is on.



Taking Still Pictures

Double-click the **My Computer** icon on the desktop, or go the **Start** menu and point to **My Computer**, then click it.

Double-click the **BisonCam, NB Pro** icon.



Click **Take a new picture** in the **Camera Tasks** box.

PC Camera Module

Before installing the optional **PC Camera** module driver use the **Fn + F10** key combination to toggle power to the module. There are 3 camera options available for this computer, depending on your purchase configuration. The **300K** and **1.3M pixel camera** modules use the **BisonCap** application to capture video files, and the **2.0M pixel camera** module uses the **Video View** application to capture video files.

PC Camera Driver Installation

1. Make sure the module is powered on, and then insert the *Device Drivers & Utilities + User's Manual CD-ROM* into the CD/DVD drive.
2. Click **Optional** (button).
3. Click **1.PC Camera Driver, Web cam > Yes**.

For the 1.3M or 300K Pixel Camera Module:

1. Choose the language you prefer and click **Next**.
2. Click **Finish** to restart the computer.
3. Run the **BisonCap** application program from the **BisonCam** shortcut on the desktop, or from the **BisonCam** item in the **Start > Programs/All Programs** menu (if the hardware is turned off use the **Fn + F10** key combination to turn it on again).

For the 2.0M Pixel Camera Module:

1. Click **Install**.
2. Click to select **Yes** or **No** in answer to the power system question.
3. Click to select **Yes** or **No** to enable/disable the **Digital Zoom** function.
4. Click **Finish > Finish** to restart the computer.
5. Run the **Video View** application program from the **Video View** shortcut on the desktop, or from the **USB2.0 PC Camera** item in the **Start > Programs/All Programs** menu (if the hardware is turned off use the **Fn + F10** key combination to turn it on again).

PC Camera Audio Setup (all camera modules)

If you wish to capture video & **audio** with your camera, it is necessary to setup the audio recording options in *Windows*.

1. Go to the **Start** menu and point to **Settings** (or just click **Control Panel**) and click **Control Panel**, then double-click the **Sounds & Audio Devices** icon (**Sounds, Speech, and Audio Devices** in Category View).
2. Click **Advanced** in the **Volume > Device volume** tab.
3. Click **Options** and scroll down and click **Properties**.
4. Select **Realtek HD Audio input** from the **Mixer device** menu.
5. Make sure the **Mic Volume** (check box) is checked, then click **OK**.
6. Boost the volume in the **Recording** section (in the Recording Control menu) as high as it will go.
7. Close the **Recording Control** window, and then click **OK**.
8. Run the **BisonCap** application program from the **Start > Programs/All Programs > BisonCam** menu.
9. Go to the **Devices** menu heading and select **Realtek HD Audio input** (it should have a tick alongside it).
10. Go to the **Capture** menu heading and select **Capture Audio** (it should have a tick alongside it).



Pre-Allocating File Space

You may pre-allocate the file size for the capture file in the **BisonCap** program. You can choose to ignore this by clicking **Cancel**.

Pre-allocating space on the hard disk can improve the capture quality (particularly of large capture files), by reducing the amount of work the hard disk has to do in finding space for the video data as it is being captured.

You may find it helpful to defragment the HDD before capture.

BisonCap (for 300K & 1.2M pixel camera modules)

BisonCap is a video viewer useful for general purpose video viewing and testing, and can capture video files to .avi format.

1. Run the **BisonCap** application from the **Start > Programs/All Programs > Bison-Cam** menu (it is recommended that you **set the capture file** before the capture process - **see Set Capture File below**).
2. Go to the **Capture** menu heading (if you wish to capture audio check **“PC Camera Audio Setup (all camera modules)” on page D - 31**) and select **Start Capture**.
3. On the first run of the program (if you have not set the captured file) you will be asked to choose a file name and size (**see the sidebar - Pre-Allocating File Space**) for the captured file. Click **Start Capture** again.
4. Click **OK** to start capturing the video, and press **Esc** to stop the capture.
5. If you wish to, you may go to the **File** menu and select **Save Captured Video As...**, choose a file name and location, and then click **Open** (you can view the file using the **Windows Media Player**).

Set Capture File

In the **BisonCap** program you will only be asked to set the capture file name on the first run of the program. When you run the program the next time the file will automatically be overwritten with the newly captured file. To avoid overwriting files you can go to the **Set Capture File..** option in the **File** menu, and set the file name and location before capture. Set the name and location then click **Open** (you can choose **Cancel** to ignore the file size if prompted).

Eliminating Screen Flicker (BisonCap)

If you find that the video screen in the **BisonCap** program is flickering, you can try to adjust the setting in the **Video Capture Filter** options.

1. Run the **BisonCap** application.
2. Go to **Options** and scroll down to select “**Video Capture Filter...**”.
3. Click either **50Hz** or **60Hz** under **Frequency** in **Property Page** (tab).

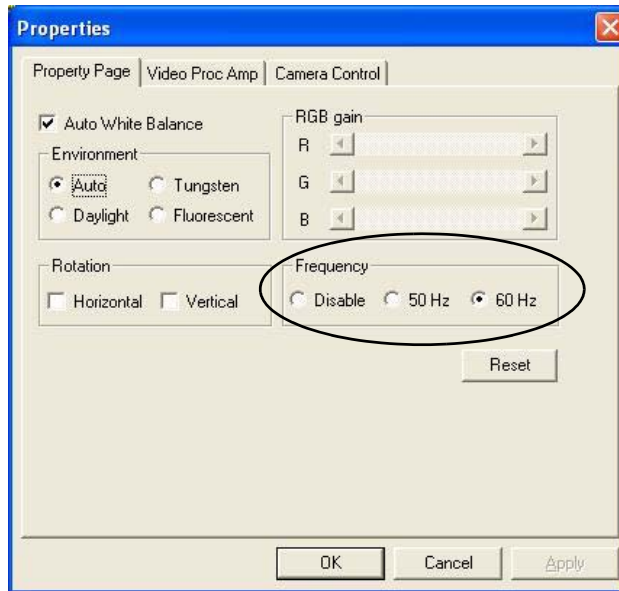


Figure D - 1
Video Capture Filter



Pre-Allocating File Space

You may pre-allocate the file size for the capture file in the **Video View** program.

Pre-allocating space on the hard disk can improve the capture quality (particularly of large capture files), by reducing the amount of work the hard disk has to do in finding space for the video data as it is being captured.

Video View (for 2.0M pixel camera module)

Video View is a video viewer useful for general purpose video viewing and testing, and can capture video files to .avi format.

1. Run the **Video View** program from the **Start > Programs/All Programs > USB2.0 PC Camera** menu (it is recommended that you **set the capture file** before the capture process - **see Set Capture File below**).
2. Go to the **Capture** menu heading (if you wish to capture audio check **“PC Camera Audio Setup (all camera modules)” on page D - 31**) and select **Start Capture**.
3. Click **OK** (the file location will be displayed in the pop-up box) to start capturing the video, and press **Esc** to stop the capture.

Set Capture File

Prior to capturing video files you may **Set Capture File...** To avoid overwriting files you can go to the **Set Capture File..** option in the **File** menu, and set the file name and location before capture. Set the name and location then click **Open** (you can choose **Cancel** to ignore the file size if prompted).

Eliminating Screen Flicker (Video View)

If you find that the video screen in the **Video View** program is flickering, you can try to adjust the setting in the **Video Capture Filter** options.

1. Run the **Video View** program.
2. Go to **Options** and scroll down to select **Video Capture Filter...**
3. Click either **50Hz** or **60Hz** under **Flickering Reduction in Image** (tab).

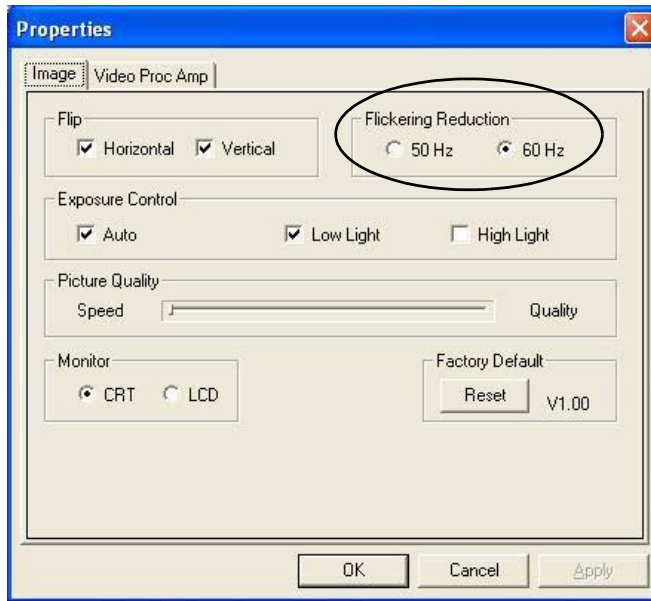


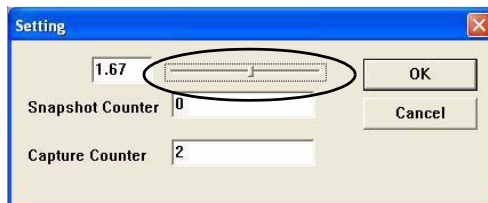
Figure D - 2
Video Capture Filter

Zoom (Video View)

If you have enabled digital zoom when installing the **2.0M Pixel Camera** driver you may use the **Options > Setting** menu to zoom the camera in and out.

Figure D - 3
Setting

1. Run the **Video View** program.
2. Go to **Options** and scroll down to select **Setting**.
3. Use the slider to adjust the zoom level, and click **OK** to save the setting.



Snapshot Folder

The Snapshot folder's default location is on the desktop. Do not move this folder or an error may appear when you try to take a still picture.

If you accidentally delete or move the folder, you can create a new Snapshot folder on the desktop in order to capture the files.

Still Image Capture (Video View)

You can capture still images by using the **Snapshot** command from the **Capture** menu.

1. Run the **Video View** program.
2. Go to **Capture** and select **Snapshot**.
3. The picture (in JPEG format) will be placed in the **Snapshot** folder on the desktop.





Figure D - 4
Snapshot Folder

802.11 b/g USB WLAN Module

Before installing the optional **802.11b/g USB WLAN** module driver use the **Fn + F11** key combination to toggle power to the module.

802.11b/g USB WLAN Driver Installation

1. Make sure the module is powered on, and then insert the *Device Drivers & Utilities + User's Manual CD-ROM* into the CD/DVD drive.
2. Click **Optional** (button).
3. Click **2.Wireless Lan > Yes**.
4. Choose the language you prefer and click **OK**.
5. Click **Next**.
6. Click **Finish** to complete the installation.
7. The operating system is the default setting for Wireless LAN control in *Windows XP*.
8. Access any available wireless networks from **Network Connections > Wireless Network Connection** menu in *Windows*, or click the icon   in the taskbar, and click **View Wireless Connections**.



Wireless Device Operation Aboard Aircraft

The use of any portable electronic transmission devices aboard aircraft is usually prohibited. Make sure the module(s) are OFF if you are using the computer aboard aircraft.

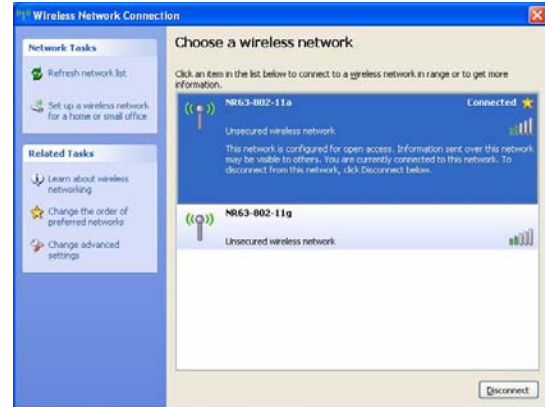
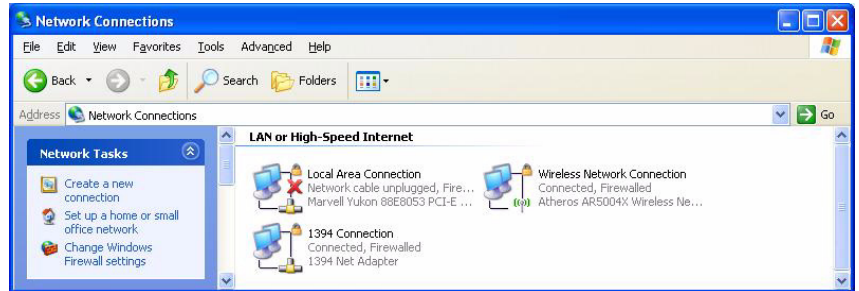
Use the **Fn + F11** key combination to toggle power to the WLAN module, and check the indicator to see if the module is powered on or not (see [Table 1 - 5, on page 1 - 10](#) [Table 1 - 2, on page 1 - 7](#)).



Network Connection

Use the **Windows Network Connections** control panel to access available wireless networks (**Start > Settings > Network Connections** or **Start > Connect To > Show all Connections**).


Figure D - 5
Wireless Network Control Panels



Bluetooth Module

Before installing the optional **Bluetooth** module driver use the **Fn + F12** key combination to toggle power to the module.

Bluetooth Driver Installation

1. Make sure the module is powered on, and then insert the *Device Drivers & Utilities + User's Manual CD-ROM* into the CD/DVD drive.
2. Click **Optional** (button).
3. Click **Install Software Drivers v2.3.0.1**.
4. Choose the language you prefer, and click **OK**.
5. Click **Next**.
6. Click the button to accept the license agreement, then click **Next**.
7. Click **Next > Next > Install**.
8. Click **Finish**.
9. The **IVT Corporation BlueSoleil - Main Window** screen appears on restart.
10. You can configure the settings at any time by going to the **IVT Corporation BlueSoleil - Main Window** control panel (**Start > Programs/All Programs > IVT BlueSoleil**), or by clicking the taskbar icon .
11. View the BlueSoleil User Guides from the **Help** Menu (press **F1**) in the **IVT Corporation BlueSoleil - Main Window** control panel.



Wireless Device Operation Aboard Aircraft

The use of any portable electronic transmission devices aboard aircraft is usually prohibited. Make sure the module(s) are OFF if you are using the computer aboard aircraft.

Use the **Fn + F12** key combination to toggle power to the Bluetooth module, and check the indicator to see if the module is powered on or not (see [Table 1 - 5](#), on [page 1 - 10](#)/ [Table 1 - 2](#), on [page 1 - 7](#)).



User Guide

View the BlueSoleil User Guides (Contents and Index) from the **Help** menu (or press the **F1** key) in the **IVT Corporation BlueSoleil - Main Window** control panel. Click **BlueSoleil User Guides** in the **Contents** tab, and click to select the appropriate User Guide from the panel on the right.

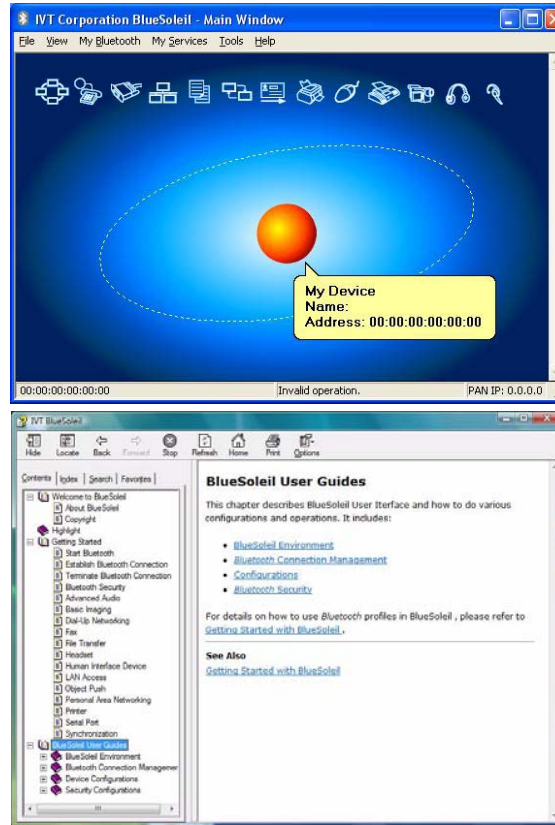




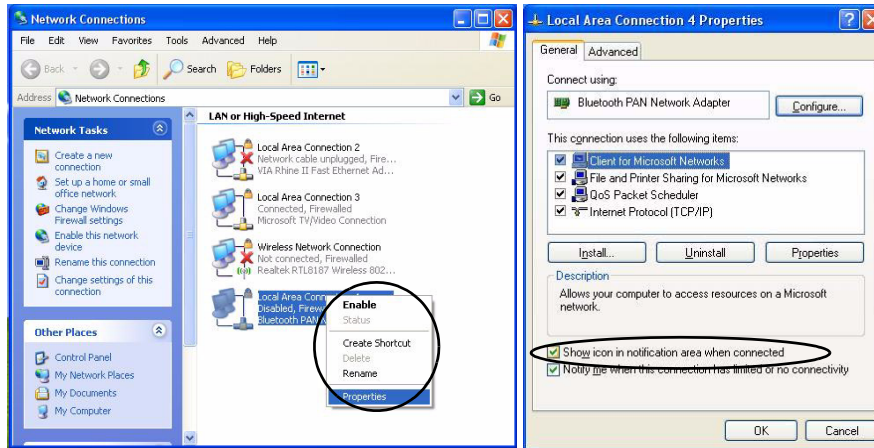
Figure D - 6

Bluetooth Control Panel & User Guides

Bluetooth Local Area Connection Icon

If you want to display the Local Area Connection icon for the Bluetooth connection in the taskbar, set it up as follows:

1. Access the **Network Connections** control panel in *Windows (Start > Settings > Network Connections OR Start > Connect To > Show all Connections)* or by clicking the taskbar icon .
2. Right-click the Bluetooth connection icon, and select **Properties**.
3. Click to put a tick in the “**Show icon in the notification area when connected**” box.
4. Close the control panels and the icon  for the Bluetooth connection will be displayed in the taskbar when connected (see sidebar and overleaf).



Disconnecting

In order to have the taskbar icon display the correct connection status, you will need to exit the **IVT Corporation BlueSoleil - Main Window** by clicking the **File** menu and selecting **Exit** (see over).

After exiting the program you can then use the **Fn + F12** key combination to turn off the Bluetooth module.

If you use the close button, or turn off the Bluetooth module (by using the **Fn + F12**) the taskbar icon will not display the correct status

Figure D - 7
Local Area Connection

Windows XP Information

5. Use the **Fn + F12** key combination to turn on the Bluetooth module.
6. Run the **IVT Corporation BlueSoleil** program from the desktop icon or **Start** menu.
7. The connection status will then be displayed.

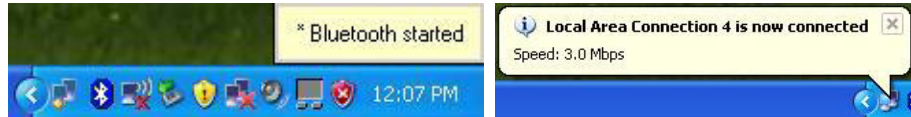



Figure D - 8 - Bluetooth Connected

8. To **disconnect** click **File** from the **IVT Corporation BlueSoleil - Main Window**, and select **Exit** (the Local Area Connection will then display "**A network cable is unplugged**").
9. Do not use the **close**  button or **Fn + F12** key combination before clicking **File > Exit** or the correct status will not be displayed.
10. You can then use the **Fn + F12** key combination to turn off the Bluetooth module (check the LED icon for the Bluetooth module power status).

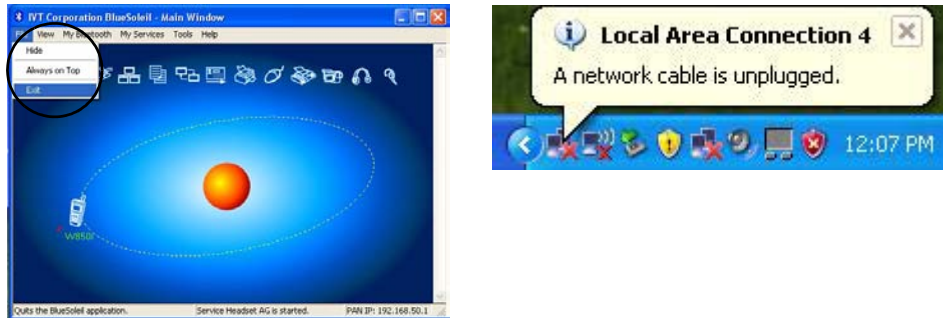







Figure D - 9 - Bluetooth Disconnected

3.5G Module

If you have included an optional **3.5G module** in your purchase option follow the instructions *on page 7 - 20* to install the SIM card (which will be provided by your service provider), and then install the application.


Before installing the application, make sure that the 3.5G module is on. Use the **Fn + ** key combination (see *“Function Keys” on page 1 - 10*) to toggle power to the 3.5G module.

3G Watcher Application Installation

1. Make sure the module is powered on, and then insert the *Device Drivers & Utilities + User's Manual CD-ROM* into the CD/DVD drive.
2. Click **Optional** (button).
3. Click **4.3GWatcher > Yes**.
4. Click **Next**.
5. Choose your region, and click **Next**.
6. Click the button to accept the license agreement, and then click **Next**.
7. Click **Next > Install**.
8. Click **Finish**, and the **3G Watcher** icon  will appear on the desktop.
9. You can access the **3G Watcher** application from the **Start** menu (**Start > Programs/All Programs > Sierra Wireless > 3G Watcher**), or by clicking the desktop icon .
10. Make sure you enable power to the module by pressing the **Fn + ** key combination (the icon  will be green).
11. See *“Connecting to the Service Provider” on page 7 - 24* for instructions on using the **3G Watcher** application.



Help & Manual

Right-click the taskbar icon  to bring up the menu to select **Help**.

Insert the *Device Drivers & Utilities + User's Manual CD-ROM* and click **Optional** (button). Click **Unlock** (button) and then click **5.Install Fingerprint Driver > Yes**.

Click **Documentation** to open the folder containing the manual in .pdf format.

To install the Adobe Acrobat Reader software to read the file, insert the *Device Drivers & Utilities + User's Manual CD-ROM* and click **User's Manual** (button), and click **Install Acrobat Reader** (button).

Fingerprint Reader

If you have included the fingerprint reader in your purchase option (for **Model B** computers only) you will need to install the driver as per the instructions below.


Make sure you have administrator's rights to your computer, and have a *Windows* password enabled for full security protection.

Before beginning the enrollment process it is recommended that you go through the fingerprint tutorial. To run the tutorial click **Start > Programs/All Programs > Protector Suite QL > Fingerprint Tutorial** after installing the driver.

Fingerprint Reader Driver Installation

1. Insert the *Device Drivers & Utilities + User's Manual CD-ROM* into the CD/DVD drive.
2. Click **Optional** (button).
3. Click **5.Fingerprint > Yes**.
4. Click **Software Installation**.
5. Click **Next > Next > Next**.
6. Click **Finish > Yes** to restart the computer.

User Enrollment

1. Click **Start > Programs/All Programs > Protector Suite QL > User Enrollment**, or double click the taskbar icon .
2. On the first run of the program you will be asked to click the button to accept the license, and then click **OK**.
3. Click **Next** and select "**Enrollment to the hard disk**", and click **Finish**.
4. Click **Next** and you will then be prompted to enter your **Windows** password (**note**: If you have not set a password **Protector Suite QL** cannot secure access to your computer).
5. Click **Next > Next** (tick the "**Run interactive tutorial**" tickbox to run through the Fingerprint Tutorial).
6. Click **Next** for each window of the tutorial (you can click the button to "**skip tutorial**" at any time).
7. Click the button above any of the fingers to begin the enrollment process for that finger.
8. Swipe the finger three times to enroll that finger.
9. Repeat the process for all the fingers you wish to enroll (see below), and then click **Next**.

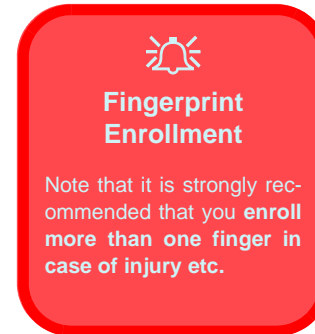
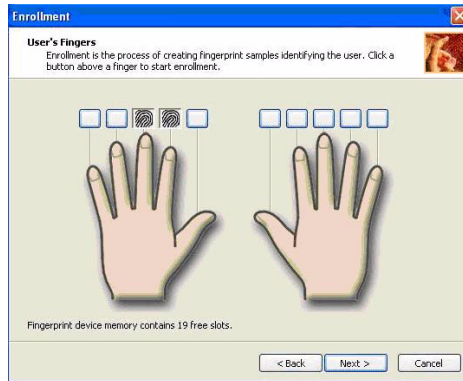


Figure D - 10 - Fingerprint Enrollment

Windows XP Information


10. If you put a tick in the “**Enable Advanced Security for the current user**” tickbox you will be asked to input a PIN before continuing (choose TPM key with PIN and enable and create a backup password).
11. Click **Next > Finish**.
12. Right-click the taskbar icon  to bring up the menu that allows you to **Edit Fingerprints**, start **Control Center**, access the **Help** menu etc. You can also run the **Control Center** etc. from the **Protector Suite QL** item in the **Programs/All Programs** menu.
13. See “[Help & Manual](#)” on page D - 44 for further details.
14. If you swipe your finger over the reader at any time you can access the **Biomenu** to **lock the computer**, **register websites**, open the **Control Center** and access the **Help** menu.



Figure D - 11 - Control Center & Biomenu