

Sg

S9

+ COPYRIGHT NOTICE

Thank you for choosing a COWON product.

We will always do our best to provide the "DIGITAL PRIDE" for you.

This manual includes use and safety instructions.

To maximize your digital entertainment experience, please read this manual carefully before using the product.

Introduction of Our Homepage

+ For the product's overall introduction, visit <http://www.COWON.com>

+ You can get the company's latest news and download the latest firmware for free at our website.

+ For first time users we provide a FAQ section and online user guide.

+ Please join us as a registered member by providing the serial number on the rear of the product at our website.

+ As a registered member, you can get one-to-one online consultation as well as the latest news and events by e-mail.

+ COPYRIGHT NOTICE

General

- + COWON is a registered trademark of COWON SYSTEMS, Inc.
- + Information in this document is copyrighted by COWON SYSTEMS, Inc. and unauthorized distribution of any part of this manual is prohibited by law.
- + COWON SYSTEMS, Inc. complies with the laws and regulations related to records, videos and games. It is recommended that customers comply with the related laws and regulations.
- + Visit our website at <http://www.COWON.com> and join us as a registered member. You can receive and enjoy various benefits provided only to the registered members.
- + The illustrations, charts, photos, and product specifications contained in this manual are subject to change and may be updated without prior notification.

About BBE

- + This product is produced under the license of BBE Sound, Inc (USP4638258, 5510752 and 5736897).
- + BBE and the BBE symbol are the registered trademarks of BBE Sound, Inc.

DIGITAL PRIDE.

COWON

All rights reserved by COWON SYSTEMS, Inc.

+ CONTENTS

Before you start! ————— 8

Safety Instructions

Package Contents

Name of Parts

Power Connection / Charging

Connecting to / Disconnecting from the PC

Firmware Upgrade

Basic Use ————— 16

Buttons

Display

Manipulation

Music Mode

Videos Mode

Radio (FM Radio) Mode

Recorder Mode

Documents (Text Viewer) Mode

Pictures (Image Viewer) Mode

Flash Mode

+ CONTENTS

Setup	26
JetEffect	
Display	
Videos	
Music	
Radio	
Recorder	
System	
Information	
Additional	32
Product Specification	
Converting Video Files Using COWON MediaCenter - JetAudio	
Troubleshooting	37

Before you start!

+ Safety Instructions

COWON is not responsible for any damages or failures to products that are caused by user misuse of products and by not following the set rules/guidelines that are described in this manual.

- + Do not use this product for other purposes than those described in this guide.
- + Handle manual, product package materials, accessories, etc with care to prevent cuts and injuries to your hands.
- + Do not view videos, pictures and texts stored in your player while driving a vehicle for your safety.
Operating other features of the player is also dangerous and may cause fatal accidents while driving.
- + The wearing of earphones while operating a vehicle, exercising, or walking may impair driving, masks or prevents recognition of emergency signals, alarms, announcements, the approach of vehicles and human speech. Doing so may also be unlawful depending on the region.
- + Do not use detergent or other chemicals on the product surface as it may cause fading. In this case, wipe the polluted area carefully with a soft cloth.
- + Do not expose the player in either cold weather of under 0°C or hot temperature over 40°C such as inside automobiles. This may cause fatal damage to your player.
- + Do not expose the player to water or keep it in a damp or humid location for a long period of time.
If the player is damaged from moisture as described above, product failure is then classified as failure
- + Do not attempt to disassemble the player. Any defects resulting from this will void any warranty, and the unit may be permanently disqualified from any warranty services.
- + Do not mix directions when connecting cables to your player or PC. Connecting cables incorrectly may damage your player or PC.
Do not bend or press connection cables with heavy objects.

Before you start!

+ Safety Instructions

- + If you smell something burning or feel excessive heat while using the product, press the RESET button to stop operation and contact the purchase place.
- + Touching the player with wet hands may cause damage and malfunctions. Handle the power plug only with dry hands (otherwise an electric shock may occur).
- + Listening at high volumes (85 dB and above) for extended periods may harm your hearing.
- + For your protection, use the player in a well lit area where LCD screen will not overly strain your eyes.
- + Using the player in places with high occurrences of static electricity may cause malfunctions.
- + In case of using this device primarily for a storage device, it is recommended to back up all data before use. COWON SYSTEMS Inc. is not responsible for any data loss due to hardware failure.
- + All data stored in the player may become deleted when being serviced. Our Service Center does not back up files while repairing players. Please note that COWON SYSTEMS, Inc. is not responsible for any data loss from products entrusted to us for service.
- + Keep the player in cool and ventilated places, away from direct sunlight as it may cause deformation and damages to internal circuitry or LCD screen.
- + Only use the AC power adaptor and USB cable provided by COWON SYSTEMS, Inc.
- + When connecting to a PC, use only USB ports on the mother board or a USB Host card. Using an external USB hub may not guarantee proper operation. (e.g. USB ports on a keyboard or an external USB hub)
- + When formatting the built-in hard disk, select FAT32 as the file system. Firmware must be reinstalled according to 'Upgrading Firmware' procedures after format.

Before you start!

+ Safety Instructions

- + Be sure to disconnect the power supply to the PC and AC adaptor during lightning or thunderstorms, to prevent danger to the user or the risk of fire hazards.
- + Keep the player away from magnets and direct magnetic fields, as they can cause malfunctions.
- + Do not connect the line-in/out jacks of the cradle (or sub-pack) and the USB port simultaneously. The power of the player may be turned off or cause malfunctions. Only connect the required jacks or ports.
- + Do not drop or expose the product to hard impact. This may result in malfunctions and/or unit failure, voiding the warranty.
- + If you find any abnormalities with the battery such as swelling, press the RESET button immediately to stop the operation and contact the purchase place.
- + The price of the product may fluctuate due to unexpected commercial conditions, and COWON Systems, Inc. will not be responsible to compensate for the price fluctuation.

Before you start!

+ Package Contents



COWON S9



Earphones



USB Cable



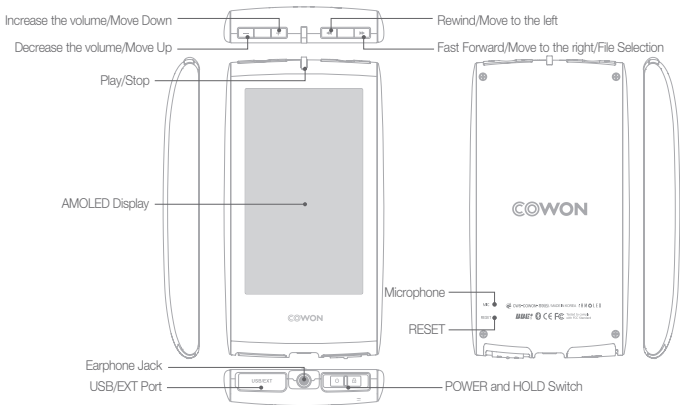
24-pin Connector
(For use with mobile phone charger)



CD, Quickguide

Before you start!

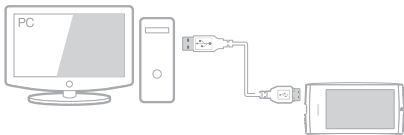
+ Name of Parts



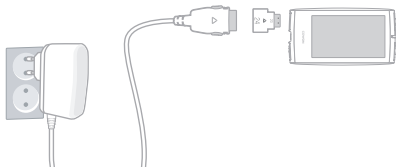
Before you start!

+ Power Connection / Charging

For charging COWON S9, you should use the USB cable to connect the player to a PC or charger.



1. Connect between PC and USB/EXT using the USB cable:
The battery will be fully charged in about 5.5 hours.



2. Use the 24-pin connector to connect to the USB/EXT port:
The battery will be fully charged in about 3.5 hours.

- You can check the charging status on the display.
- When charging the player for the first time or the player have not been charged for an extended time, fully charge the battery before use.
- When connected to a USB hub, the player may not be charged from the USB power.
- Make sure you connect the player directly to the USB port on the rear of the PC.
- Use only the TTA-certified 24-pin charger for your safety.

Before you start!

+ Connecting to / Disconnecting from the PC

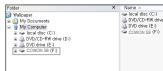
1



2




3



4



1. Use the USB cable to connect COWON S9 to the PC.
2. COWON S9 displays the following image if properly connected to the PC (Picture 2).
3. Also make sure to check My Computer or Windows Explorer to see if COWON S9 is properly connected to the PC (Picture 3).
4. Copy video, music or other files to COWON S9 (Picture 4).
5. When done, click the  icon on the tray bar to safely remove

COWON S9 from the PC.

6. Click the popup message.



7. Safely remove the hardware and disconnect the USB cable.



- The player can recognize up to 12,000 folders, and up to 12,000 files (music file: 8,000 + others: 4,000).
- Disconnect the product after performing "Safely remove hardware" function.
- The following message may appear randomly, but it does not indicate that the product is in abnormal condition.



- If your operating system does not display the "Safe To Remove Hardware" window, disconnect the player after all transfer operations are completed.
- Only simple file transfer operation is available for Linux and Mac OS.

Before you start!

+ Firmware Upgrade

Firmware is an embedded software within the hardware, and upgrading it further enhances system stability and feature sets. Be advised that Beta(unofficial version) firmwares may cause system malfunctions.

How to upgrade the firmware

1. Download the latest firmware from the SUPPORT section of the website (<http://www.COWON.com>).
2. Use the USB cable to connect COWON S9 to the PC.
3. Unzip the downloaded firmware and copy it to the root folder of COWON S9.
4. Perform "Safely remove the hardware" function on your PC and disconnect the USB cable.
5. When you turn on the product, the firmware upgrade process will start.
6. The current firmware version can be checked in SETUP - Information.

It is recommended that you perform the firmware upgrade if you have formatted the system or the .System folder is deleted.

- Fully charge the player before upgrading the firmware.
- Do not turn off the player before firmware upgrade is complete. Data saved in the memory of COWON S9 may be deleted while upgrading firmware.
- Back up any important data before the firmware upgrade as the data in the memory may be deleted during the process. COWON is not responsible for any loss of data, if not backed up.

+ Buttons



It turns on and off the power



It turns on or off the display in the power-on condition.



It switches on 'Hold'



It controls the Volume

Moves the cursor up or down in the selection or setting window.

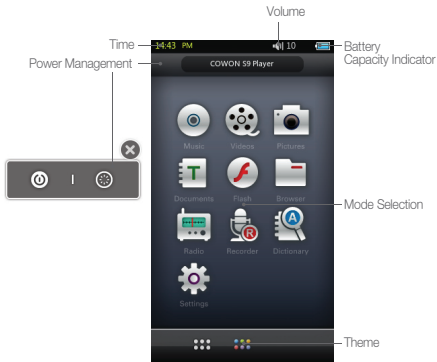


Rewind / Fast Forward

Moves the cursor to the left or right in the selection or setting window.

+ Display

COWON S9 supports auto pivot function hiring the gravity sensor.



+ Manipulation

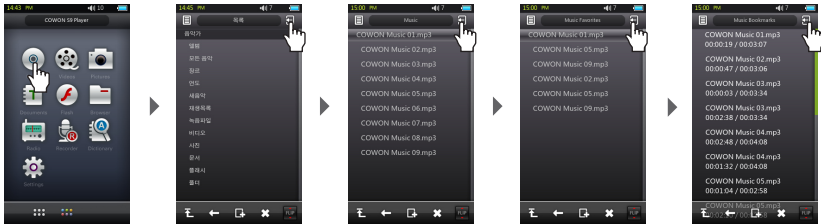
COWON S9 enables you to make an intuitive operation on the touch-sensitive screen.

Tap a desired mode in the mode selection window to access.

Tap the top left (List) or right (Back) button to select a desired file.

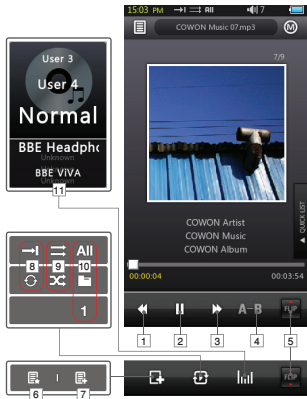
Tip: You can do the same operation using the volume and file selection (rewind) buttons. (see "Buttons" on page 16) On the bottom side, there are buttons related to operation of the appropriate mode.

Tap the M button on the top left corner to move to the mode selection menu.



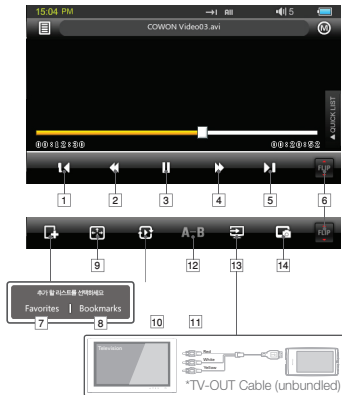
As COWON S9 is equipped with a touch sensitive screen, it will not operate otherwise.

+ Music Mode



1. Selects the previous music track or rewinds the current track.
2. Plays a music file or pauses it.
You can do the same operation using the Play/Pause button in the center of the volume / search button bar. (See "Buttons" on page 16)
+ If a file has an image in the ID3 tag, the image will be displayed.
3. Selects the next music track or fast-forwards the current track.
4. Sets the sectional repeat. It can play back in repeat mode a minimum 1 second-length section of a track.
5. Displays the operational buttons on the rear side.
6. Adds the current file to the Favorites list.
Favorites is a file list to which you can add your favorite music files up to 256.
7. Inserts bookmarks during the playback.
Once a bookmark is inserted at a specific point during a playback of music, it is possible to start playback at that particular point.
Maximum of 256 files can be added to bookmark.
8. Sets the repeat play mode
9. Sets the random play mode
10. Sets the boundaries for playback
All : Plays all music files regardless of folder
1 : Plays the currently selected music track
Folder : Plays music files located within the current folder
11. Selects JetEffect settings

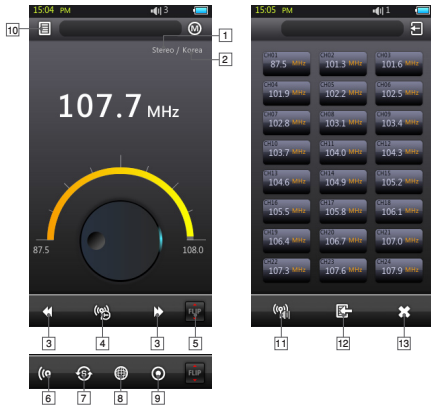
+ Videos Mode



1. Moves to the previous file.
2. Rewinds the file.
3. Plays or stops playing a video file temporarily.
You can do the same operation using the Play/Pause button in the center of the volume / search button bar.
(See "Buttons" on page 16)
+ The video file may not be played normally if it is not converted using COWON MediaCenter - JetAudio.
4. Fast searches the file forward.
5. Moves to the next file.
6. Displays the operational buttons on the rear side.
7. Adds the current file to the Favorites list.
Favorites is a file list to which you can add your favorite music files up to 256.
8. Inserts bookmarks during the playback.
Once a bookmark is inserted at a specific point during a playback of music, it is possible to start playback at that particular point.
Maximum of 256 files can be added to bookmark.
9. Enlarges the video image or displays it in full screen.
10. Sets the repeat play mode

+ Radio (FM Radio) Mode

11. Sets the boundaries for playback
 - All : Plays all music files regardless of folder
 - 1 : Plays the currently selected music track
 - Folder : Plays music files located within the current folder
12. Sets the section repetition. The player repeats playing a section of more than one second.
13. Turns on the TV OUT
 - (* This can be used only for playback purpose)
 - When TV OUT is selected, volume level is fixed and headphone cannot be used. The TV-OUT function will be canceled if you press the Play / Pause button.
14. Saves the current file as an image.

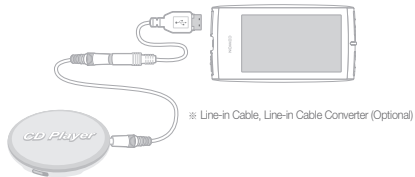


1. Checks status of stereo or mono signals
2. Displays the country for radio signals, which can be changed under Settings mode.
3. Press it briefly to change the tuning frequency at 0.1MHz intervals. Press it and hold it to searches and jumps to the next tuning frequency with good signals.
In preset mode, it changes to either previous preset channel or the next preset channel.
4. Selects the Preset mode. In this mode, only the preset channels can be accessed.
5. Displays the operational buttons on the rear side.
6. Sets stereo or mono setting
7. Automatically searches the FM frequencies with good signals and enters them into the preset channels
8. Records the currently selected channel
9. Displays the preset search mode. You can add the currently tuned frequency to the preset channel or delete a preset channel.
10. Listens to the selected preset.
11. Saves the current frequency to the selected preset.
12. Deletes the selected preset.

As COWON S9 is not equipped with an external antenna but the earphone plays a FM antenna role, stretch the earphone as straight as possible to improve the reception sensitivity.

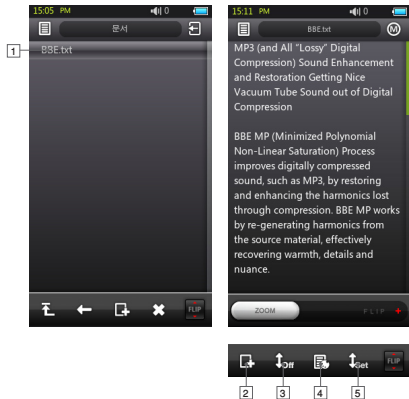
Make sure the earphone is plugged in when you make FM recording. Only FM signal is available; reception of AM signal is not supported.

+ Recorder Mode



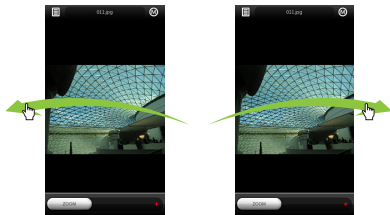
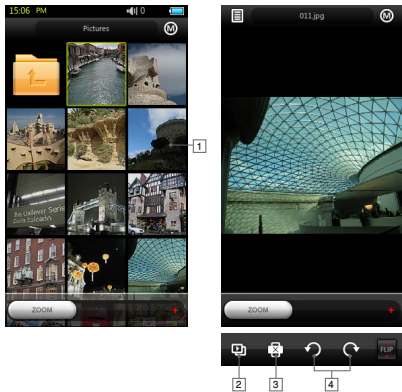
1. Plays back recorded files
2. Starts recording
3. Select voice recording or Line-In recording.
4. Selects the sound quality of the recording. Higher bps provides better sound quality but requires larger file size.
5. Sets the volume level during recording.

+ Documents (Text Viewer) Mode



1. Tap a text file to view the content.
The text file should be located in the Documents folder.
2. Inserts the bookmark in the current position.
3. Automatically scrolls the text.
4. Changes the color.
5. Sets the auto scroll time.

+ Pictures (Image Viewer) Mode

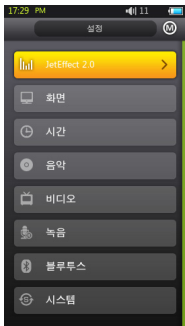


1. Tap an image file to play it.
The image should be located in the Pictures folder.
For compliant image formats, see the product specification.
2. Slide-shows the image files in the folder.
3. Rotates the image file.

+ Flash Mode

Flash files (in the format of .swf) stored in COWON S9 will be played in this mode.

Flash-based simple games and animations can be played as well.



+ JetEffect 2.0

You can select one from 26 JetEffect presets.
4 user-defined presets are supported so that you can adjust the settings of Equalizer, BBE+ and Stereo Enhance.

BBE+ provides much more advanced and powerful sound field effect than ever, creating natural and comfortable sound quality.

BBE : Sharpens the music sound with high-clear sound field effect

Mach3Bass : Bass booster that amplifies the ultra bass range

3D Surround : 3 dimensional sound effect

MP Enhance : Compensates for a loss of sound

Stereo Enhance is a sound field effect that enriches the stereo sound.

Excessive settings of JetEffect may cause a noise or distortion of sound.
For more information about JetEffect, visit us at www.COWON.com and take a look at the BBE MP column.

+ Display

- Language

You can select a preferred language for COWON S9.

- Font

You can select a preferred font for COWON S9.

Convert the .TTF font file to USER.TTF that is copied to the SYSTEM folder, which shall be the user font file.

- Play time

You can display information on the playback time of the current track.

The play time indicates the elapsed time while the remaining time indicates the time remaining until the current track ends.

- Wallpaper

You can set your own wallpaper.

At the first start, the default image will be displayed, however, you can select an image in Picture mode and set it as a user-defined wallpaper.

- Lyrics

You can set to display lyrics of a music file if it has one. If set, lyrics of a music file will be displayed during its playback. For a music file that does not contain lyrics, the lyrics will not be displayed.

For more information about input of lyrics, visit us at www.COWON.com and see the use of LDB manager section of the user guide.

- Auto Display Off

You can set the time the display stays on.

If no input is entered for the set time, the display will turn off.

- Brightness

You can set the brightness of the screen.

- TV Standard

You can select a TV Standard.

+ Time

- Time
 - Sets the current time.
 - Sets the correct time setting for alarm and scheduled recording.
- Alarm
 - This will automatically turn on the player at the specific time.
 - The music alarm will play a music file while the FM alarm will tune to the last run frequency in Radio mode.
 - FM recording will record the last run radio program for the set time.
 - FM scheduled recording will consume more power than usual. So please check the power connection or the battery capacity.
- Sleep
 - Automatically turns off the power after a specified time.
 - After the preset time has passed, the player will automatically turn off even if a file is being played at the time.

- Auto Off
 - When the player is stopped and no action is taken after a specified time has elapsed, this feature will automatically turn off the player.
 - This function does not operate during playback.

+ Music

- Skip Interval
 - This enables you to set the time interval of a skip at once if you press the <<, >> button.
- Scan Interval
 - This enables you to set the speed of fast forward / rewind if you press and hold the <<, >> button.
 - The higher the speed is, the faster the player scans.
- Resume
 - This will remember the location of the last run music file.
 - If auto playback is set, this will play the music file from the last run point.

- Play Speed

You can adjust the play speed of a music file.

- Fade In

This will increase the volume gradually when the player resumes playing a music file.

You can set the time the volume will increase.

+ Video

- Skip Interval

This enables you to set the time interval of a skip at once if you press the <<, >> button.

- Resume

This will remember the location of the last run music file.
If auto playback is set, this will play the music file from the last run point.

- Play Speed

You can adjust the play speed of a video file.

- Subtitle

You can set to display the subtitle of a video file.

+ Recording

- Line-in Quality

You can set the sound quality of a file incoming to the direct encoding port.

The higher the bps figure is, the better the quality is but the file size increases accordingly.

- MIC Quality

You can set the sound quality of a microphone recorded file.
The sound mode of a microphone recorded file is defaulted to Mono.

The higher the bps figure is, the better the quality is but the file size increases accordingly.

+ Time

- FM Quality

You can press the REC button to set the sound quality of a file during its playback.

You can set the sound quality in radio scheduled recording.

The higher the bps figure is, the better the quality is but the file size increases accordingly.

- Line Volume

You can adjust the volume level of a source incoming from the Line-In port.

- MIC Volume

You can adjust the volume level of a source incoming from the MIC port.

- Auto Sync

This will detect sound from the Line-in port to create a new file. If there occurs a sound gap as much as you set, this will create a new file to continue recording.

+ Bluetooth

Used if you use or configure the settings of the COWON S9 integrated Bluetooth function for wireless communication.

- Disconnect

Disconnects the Bluetooth headset from COWON S9.

- Search

COWON S9 scans for Bluetooth headsets available.

If nothing is found, you should set on the Bluetooth function in the Bluetooth headset you want to use.

Select a Bluetooth headset in the search result and pair it with COWON S9 so that the Bluetooth connection is successfully completed.

For information about the pairing, see the user guide of the selected Bluetooth headset.

- Using Bluetooth

You can set to use the Bluetooth function of COWON S9

The playable time will be reduced than otherwise if you use the Bluetooth connection.

- Delete
Deletes the selected Bluetooth headset. Once a Bluetooth headset is deleted, it will be restored after going through the search and pairing processes again.
Only Bluetooth headsets are supported.
When the Bluetooth connection is completed, the Bluetooth connection will remain in effect even if you close the setting window.

+ System

- Hold Mode
You can lock the player so that all operations will be deactivated including the touch sensitive screen and the buttons.
- Audio L/R
Adjusts the balance of the left and right speaker volumes.
- Load Defaults
Restores all settings to the factory default, except for the language setting.

- Clear Memory
Initializes the internal memory.
If initialized, all contents in the memory will be lost and can not be restored.
- Sleep Mode
In this mode, the player consumes the minimum power when you turn it off.
The maximum standby time is about 400 hours in sleep mode where the startup time will be reduced if you restart the player. However, the playable time can be reduced slightly than normal as the sleep mode does consume power. So set the mode to Off if you do not use
- Beep
You can set the beep sound if you tap a button on the screen.

+ Information

Version: The current firmware version
Total Space: The total capacity of the internal memory
Free Space: The remaining capacity of the internal memory

+ Product Specification

Hardware		
Display (Touchscreen)	Display	3,3inch 16:9 Wide AMOLED 480x272 (16million colors)
	Brightness	400cd/m ² or higher
Audio	Channel	Stereo
	Frequency Range	20Hz ~ 20KHz
	Max Output	16 Ohm earphones : 30mW + 30mW
	S/N Ratio	96dB
Power	Built-in Battery	Lithium-Polymer Battery
	Battery Charging	3,5 Hours by AC Adaptor, 5,5 Hours by USB
	AC Adaptor	DC 5,0V, 3A (24-pin Adaptor 4,2V 750mA)
Capacity	Flash Memory	2GB / 4GB / 8GB / 16GB
USB	USB Device	USB 2,0 High Speed
Bluetooth	Type	Bluetooth Ver 2,0 + EDR
	Profile	A2DP, AVRCP
FM Radio	Frequency range	87,5-108 MHz (KR,US,EU), 76-108 Mhz (JP)
TV	Connecting type	Video : Composite, Audio : Stereo
	Format	NTSC / PAL
Button	POWER & HOLD Switch, FF, REW, VOL+, VOL-, PLAY	

General	Size	57(W) x 105,8(H) x 12,7(T) mm
	Weight	78g (battery included)
	Operation Temperature Range	0℃ ~ 40℃
	G-Sensor	Supports Auto Pivot
System Requirements	CPU	Pentium III 500Mhz or higher
	OS	Windows Vista/ XP / 2000 / ME
		Multimedia file transferable in PCs with MAC OS 10.X / Linux v2.4 or above
	USB Port	USB 2.0 High Speed recommended

Specifications & applications are subject to change without notice by firmware upgrades.

Movie Player	File Format	AVI, WMV, MP4
	Video Codec	MPEG4 SP(480X272, 30fps, Max 1,5Mbps) WMV9 SP(480X272, 30fps, Max 800Kbps) H,264 BP(480X272, 30fps, Max 800Kbps)
	Video Resolution	Max 480x272, 30 fps
	Audio Codec	MPEG1 Layer 1/2/3, WMA, FLAC, OGG Vorbis
	Caption	SMI
	Playback time	Max 8 hours

Music Player	File Format	MP3/2/1, WMA, FLAC, OGG, APE, WAV
	Audio Codec	MP3 : MPEG 1/2/2.5 Layer 3, ~320kbps, ~48kHz, mono/stereo WMA : ~320kbps, ~48kHz, mono/stereo OGG : ~Q10, ~44.1kHz, mono/stereo FLAC : Compression Level 0 ~ 8, ~44.1kHz, mono/stereo WAV : ~48kHz, 16bit, mono/stereo APE : Fast, Normal, 16Bit, Ver. 3.93 higher
	META TAG	ID3 V1, ID3 V2.2/V2.3/V2.4, Vorbis Comment, MP4 Tag
	EQ	22 Presets (BBE settings included), 4 User Presets
	BBE	BBE+, Mach3Bass, MP Enhance, 3D Surround
	Lyrics	LDB 1.0, 2.0
	Playable Time	Up to 40 hours of continuous playback
	Recording	Internal microphone and Line-in recording supported
Photo Viewer	File Format	JPG, GIF, PNG
	Resolution	JPG
Document Viewer	File Format	TXT file Viewer
	File Size	Unlimited
Others	Flash files	

* The playable time is based on the company test and may be reduced in the actual use condition. In particular, the playable time for audio files differs severely between them so make sure you copy the files into the internal memory before playback.

+ Converting Video Files Using COWON MediaCenter – JetAudio

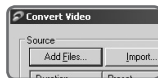
1. Install and run the COWON MediaCenter - JetAudio.



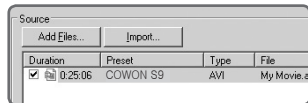
2. Click “Convert” button on the top right hand side.
From drop-down menu, select “Convert Video” .



3. From the Convert Video window, click “Add File” to select the files to convert,

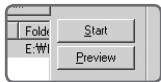


4. Check the selected video files in the list,

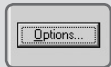


+ Converting Video Files Using COWON MediaCenter – JetAudio

5. After checking the target folder location to save the converted files and other settings, click on “Start” to start the video conversion process.



- Movie files that do not play properly on the product may need to be converted by COWON MediaCenter - JetAudio. Before doing so, please make sure that the movie files play properly on the PC first.
- Files already damaged before conversion may not work on COWON S9 even if the conversion process is successful.
- Conversion time may vary depending on PC performance, source file size and codec types.
- “Preview” allows checking the converted video before starting conversion.
- To convert a file with subtitles or to change settings on subtitles, click on “Convert Options” .



- SMI files for subtitles must have the same file name as its video file.

+ Troubleshooting

+ I am still confused even after reading the manual.

Our website www.COWON.com provides support for users of COWON products with FAQ (Frequently Asked Questions) and beginner's guide for our products. Users are strongly encouraged to check out our website for further information regarding product usages and software upgrades and patches. For individual inquiries, please contact us on-line as we will try to help you as best we can.

+ I cannot turn on the player.

If the battery is completely discharged, use the AC adaptor to charge the battery before you start the player. The startup time of the player may take more time than usual, depending on the charging time.

If the player does not work at all, press the RESET button on the rear side. For your information, RESET will just disconnect the power and does not affect the product operation at all.

+ The touch screen and buttons do not work properly.

Check if the power switch is positioned to HOLD.

+ I can't hear any sound from the speaker.

Check if the volume is set to "0".

Check if there is any file available in the player. If there is no file in the player, you will hear no sound. Corruption of a music file will cause a noise or discontinued playback.

Make sure the earphone is connected properly. Impurities in the earphone jack can cause a noise.

+ Troubleshooting

+ Album image is not displayed in Music Mode

In order display album image, the image has to be stored in the ID3 tag of the music file. You can edit the ID3 tags using jetAudio.

A JPG image file of the same name as the current music file should have been stored in the player. Or the folder containing music files has an image file named "cover.jpg" .

+ Video won' t play.

All video files must be converted using COWON MediaCenter - JetAudio. Any other video files are not supported by COWON S9.

+ FM Radio does not work.

COWON S9 does not have a separate antenna. Instead it uses earphone wire to receive FM Radio signals. Stretching the wires may enhance the reception quality. FM radio reception may be poor at locations where FM radio transmissions are shielded. If FM radio does not work where reception should be possible, please contact our service center (Note that reception quality of COWON S9 may differ from other FM radio receivers.)

+ There is too much noise in my recordings.

COWON S9 uses ultra-small embedded microphone, so it may be more susceptible to noise during recordings.

The internal microphone of COWON S9 is located on the rear side. The microphone should not be covered with anything in recording.

+ Troubleshooting

+ Characters on the display are corrupted.

Set your preferred language again in Setup > Display > Language and try again. If the problem persists, set the current font to the system font and try again.

COWON products are developed based on the Korean Windows OS versions, which may cause corruption of some special fonts or languages on the display.

+ Computer cannot recognize the player when connected.

If the player does not turn on in connection with the PC, press the RESET button.

If you experience a frequent disconnection or unstable connectivity, connect the player directly to the rear USB port of the PC, rather than a separate USB hub.

As COWON products use the USB connection for the main power system, unstable power supply can cause a connection failure.

+ Memory capacity of the player is different or smaller than specified.

The memory capacity indicated by Windows Explorer may be different from that indicated by the memory manufacturer.

COWON S9 uses some area in the drive for system operation. Therefore, the actual available capacity is somewhat reduced after excluding system area.

+ COWON S9 does not play properly when memory is full.

For COWON S9 to function properly, it requires at least 5 MB of space for saving settings and other system files.

User's Manual Information

Do not

Any changes or modifications to the equipment not expressly approved by the party responsible for compliance could void user's authority to operate the equipment.

FCC Compliance Statement

This device complies with part 15 of the FCC Rules. Operation is subject to the following two conditions:

- (1) This device may not cause harmful interference, and
- (2) This device must accept any interference received,

Including interference that may cause undesired operation

Information to User

This equipment has been tested and found to comply with the limits for a Class B digital device, Pursuant to part 15 of the FCC Rules. These limits are designed to provide reasonable protection against harmful interference in a residential installation.

This equipment generates, uses and can radiate radio Frequency energy and, if not installed and used in accordance with the instructions, may cause harmful interference to radio communications.

However, there is no guarantee that interference will not occur in a particular installation. If this equipment does cause harmful interference to radio or television reception, which can be determined by turning the equipment off and on, the user is encouraged to try to correct the interference by one or more of the following measures:

- Reorient or relocate the receiving antenna.
- Increase the separation between the equipment and receiver
- Connect the equipment into an outlet on a circuit different from that to which the receiver is connected.
- Consult the dealer or an experienced radio/TV technician for help.